

AES symm. tri. / buy on upside brkout on increased volume

AES Corp:NYSE (16.0600, 16.2300, 15.9300, 16.0800 +0.0500)



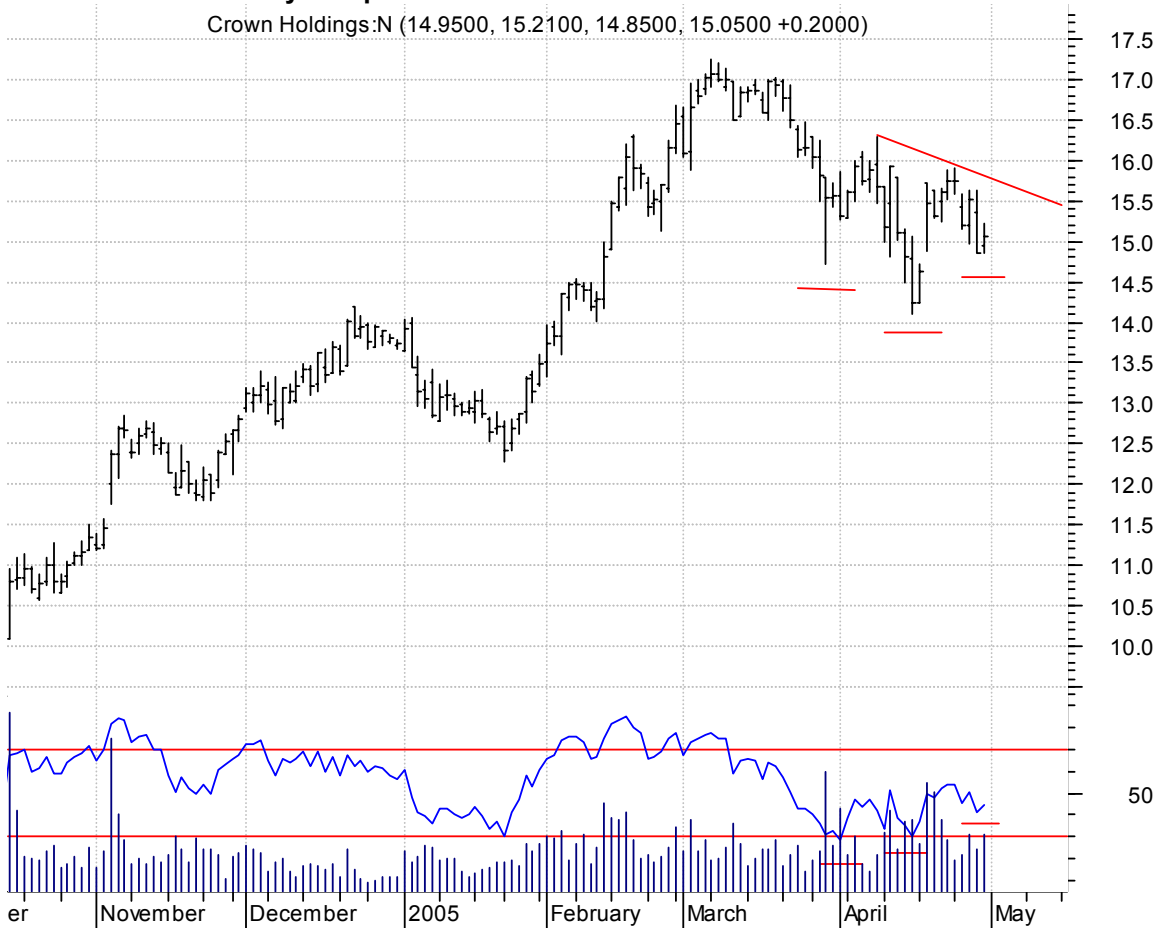
ASTE symm. tri. preceded by 'pole-like' move / buy on upside brkout on increased volume

Astec Ind Inc:OT (23.2500, 23.4000, 22.3500, 23.3000 +0.1300)



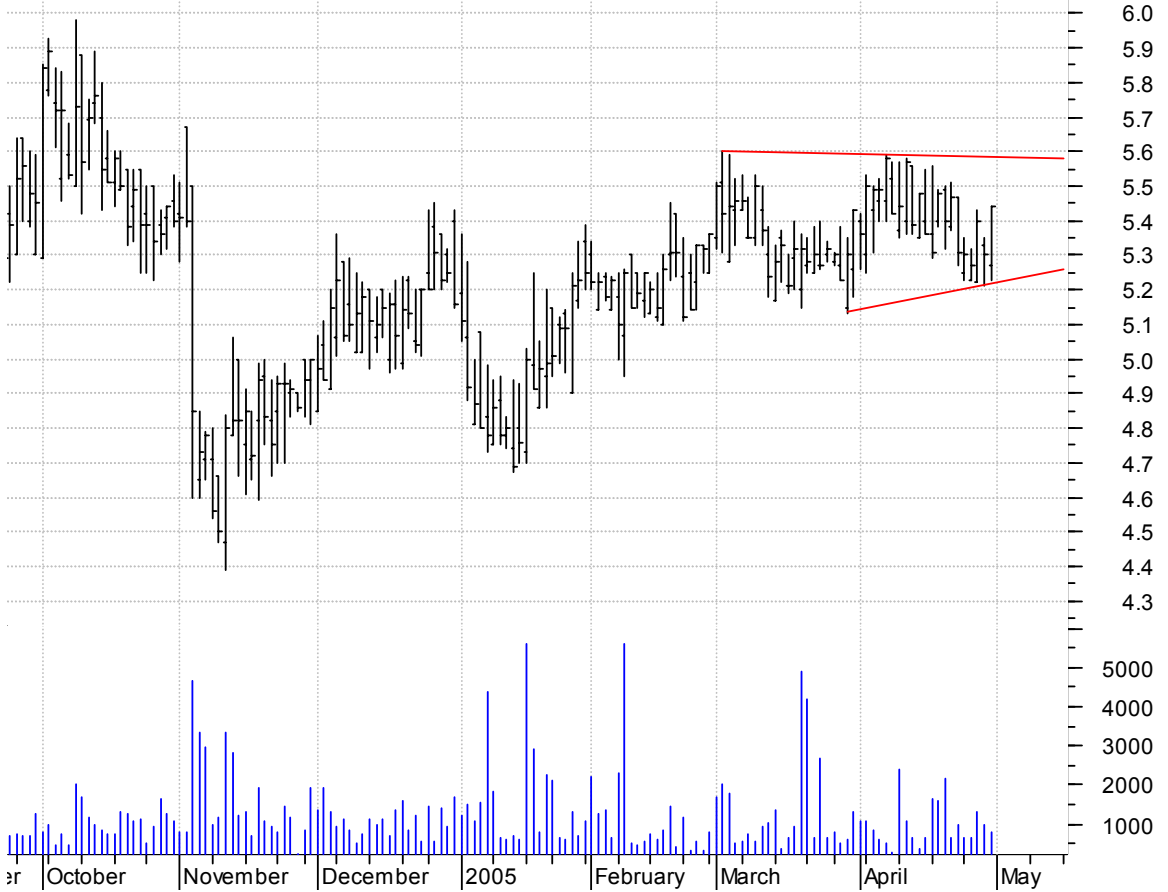
CCK inv. h. & sh. / buy on upside breakout on increased volume

Crown Holdings:N (14.9500, 15.2100, 14.8500, 15.0500 +0.2000)



CERG symm. tri. / buy on upside breakout on larger than normal volume

Ceres Group Inc: (5.2700, 5.4400, 5.2300, 5.4400 +0.1400)



GOT falling wedge preceded by 'pole-like' move / buy on upside brkout on increased volume



HMT symm. tri. / buy on upside brkout on increased volume



IDU symm. tri. / buy on upside brkout on increased volume

iShares Tr DJ US (72.3500, 73.0400, 71.8400, 73.0200 +0.8900)



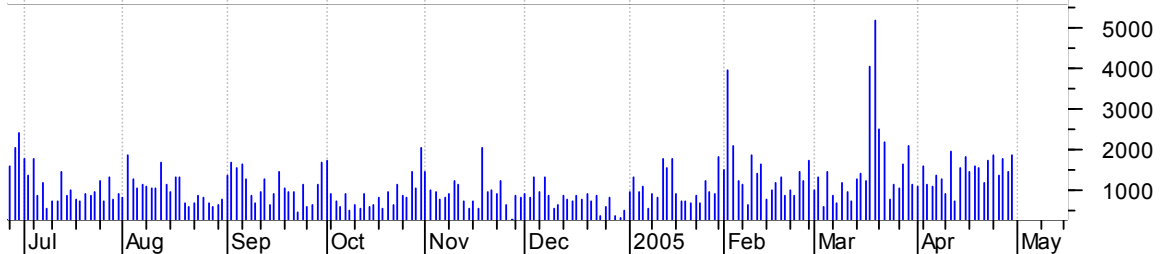
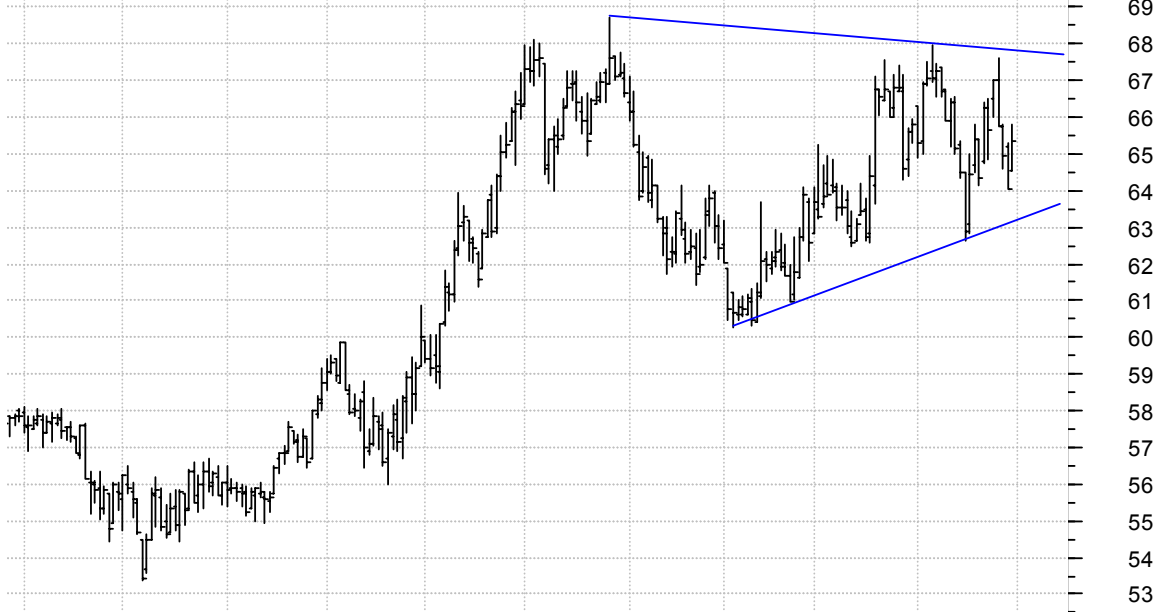
LLY bullish flag / buy on upside brkout on increased volume

Lilly (Eli) & Co (58.1400, 58.4700, 57.7000, 58.4700 +0.4700)



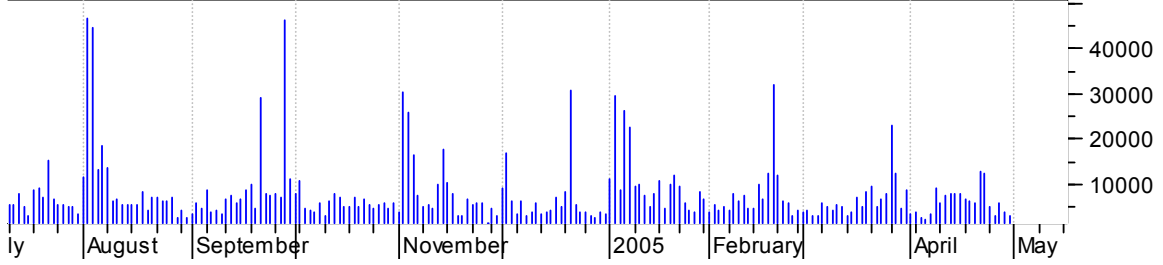
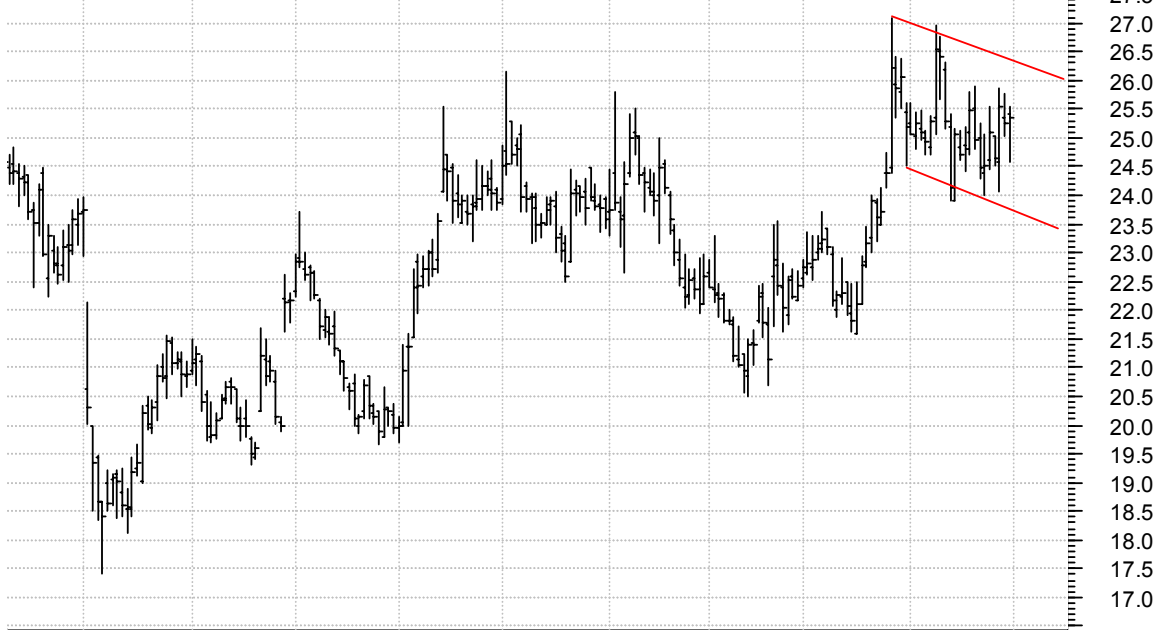
MTX symm. tri. / buy on upside breakout on increased volume

Mineral Technolo (64.5500, 65.8000, 64.5500, 65.3200 +1.2800)



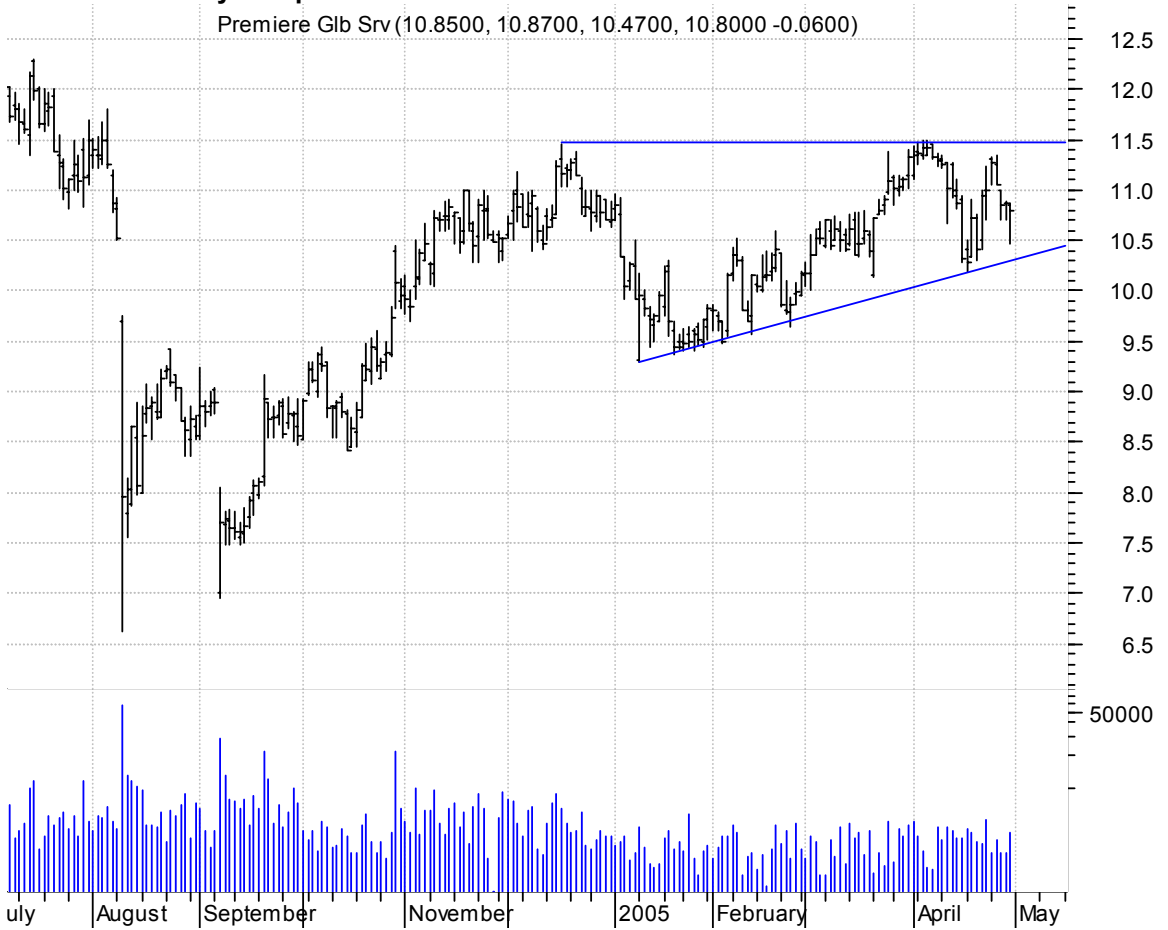
PCLN sloppy yet unmistakable bullish flagging pattern / buy on upside breakout on increased volume

Priceline.com nc (25.4000, 25.5600, 24.5900, 25.3600 +0.0900)



PGI asc. tri. / buy on upside brkout on increased volume

Premiere Glb Srv (10.8500, 10.8700, 10.4700, 10.8000 -0.0600)



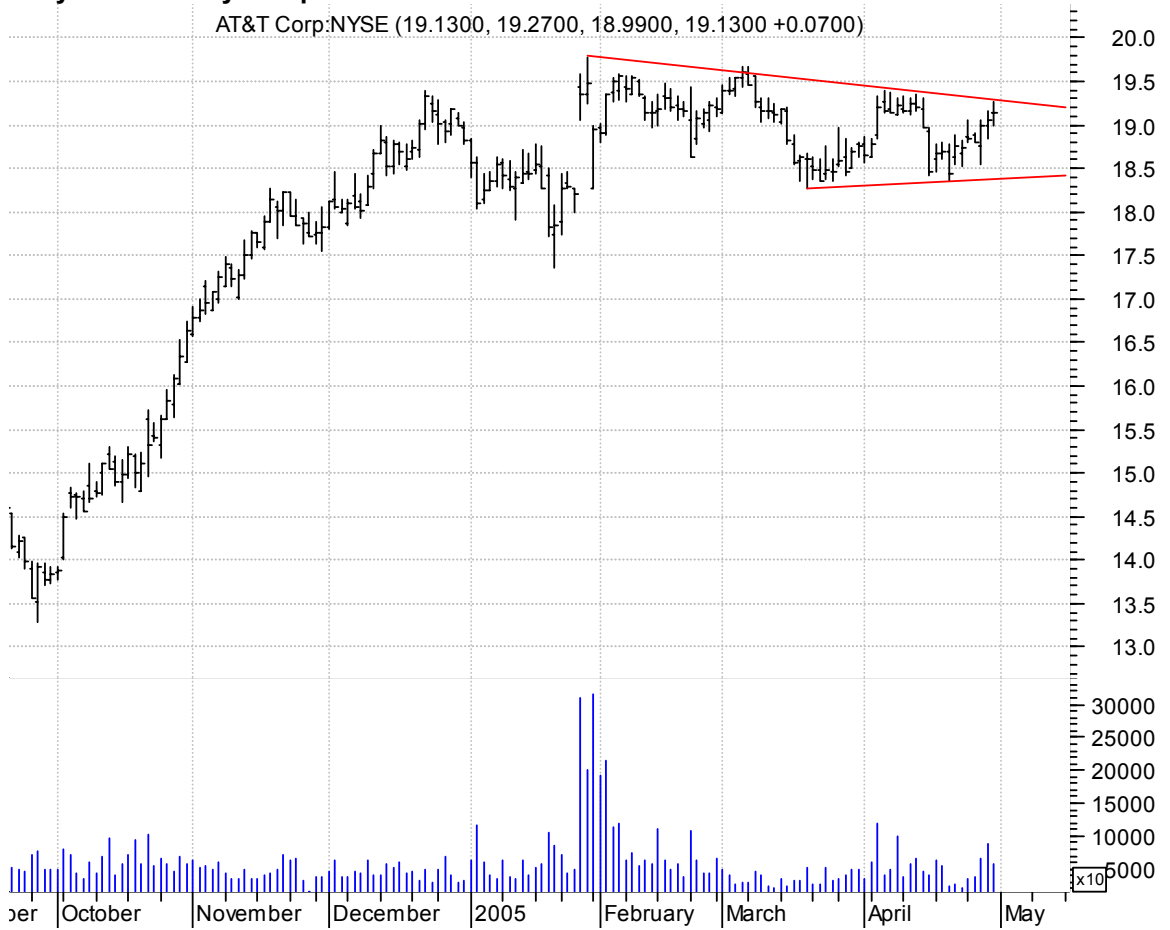
SWN symm. tri. / buy on upside brkout on increased volume

Southwestern Ene (57.8500, 58.8900, 57.0000, 58.7500 +1.2400)



T symm. tri. / buy on upside breakout on increased volume

AT&T Corp:NYSE (19.1300, 19.2700, 18.9900, 19.1300 +0.0700)



UPCS bullish flagging / buy on upside breakout on increased volume

Ubiquitel Inc:OT (7.0100, 7.2600, 6.9700, 7.2500 +0.2500)



ZBRA symm. tri. / buy on upside brkout on increased volume

Zebra Technologi (47.1300, 48.2000, 46.5000, 47.7600 +1.1400)



chartpatterns.com

Chart Pattern Analysis for Timing the Markets

KMatras@aol.com