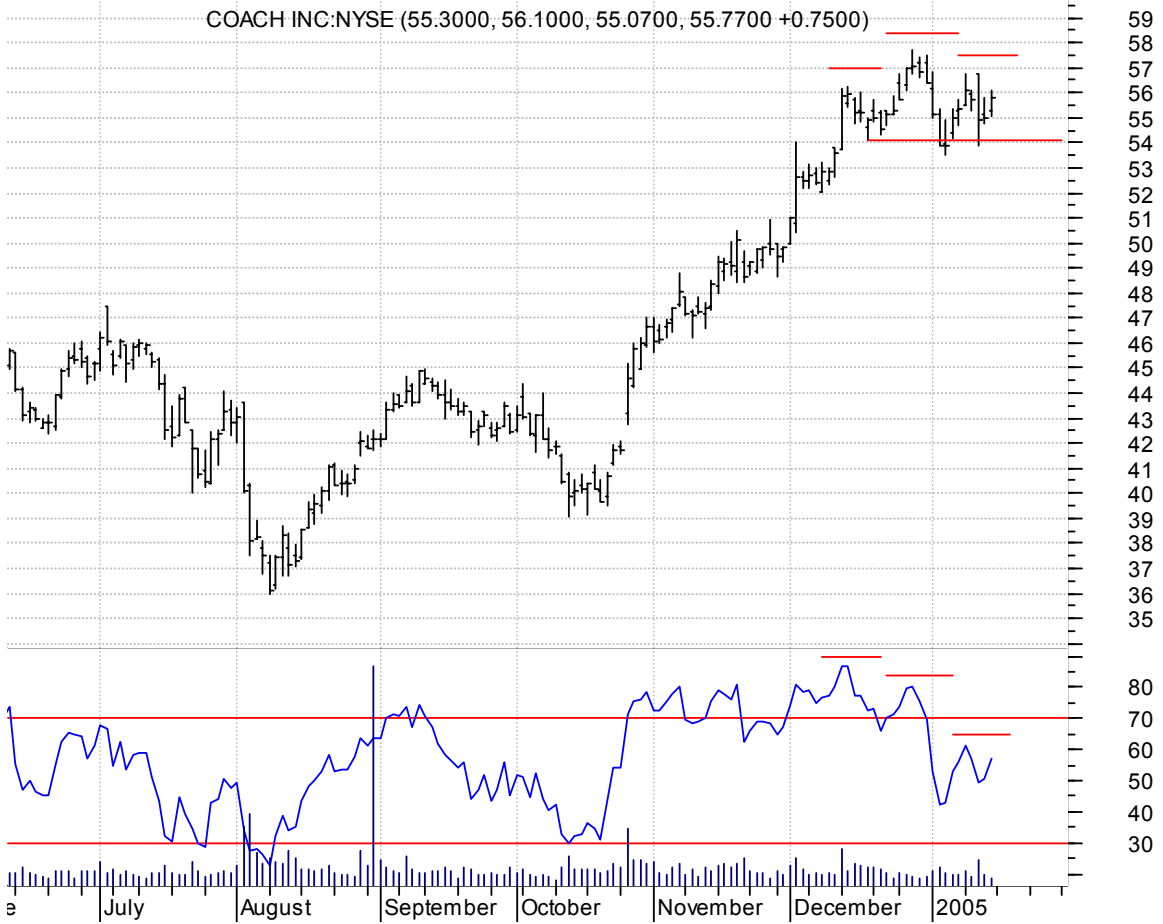
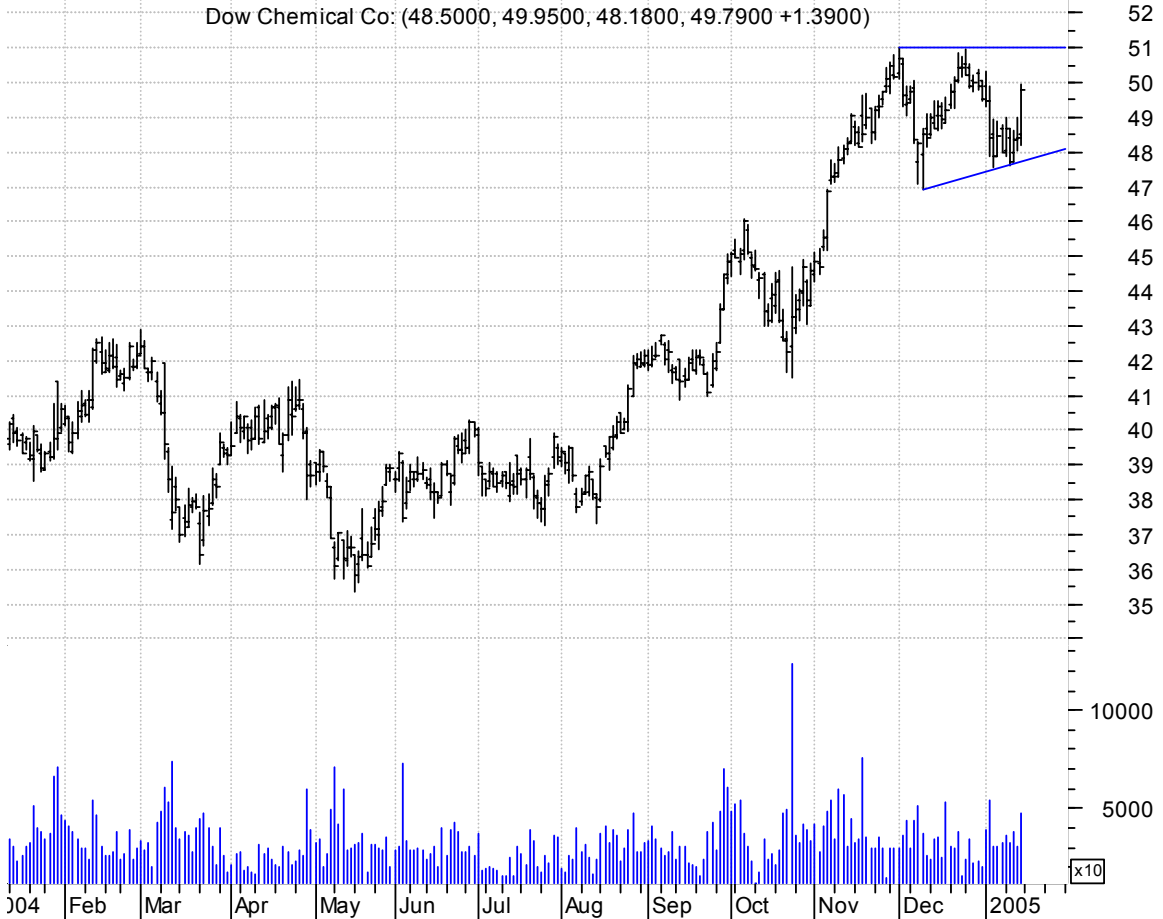


COH h. & sh. / sell on downside brkout on increased volume



DOW asc. tri. / buy on upside brkout on increased volume



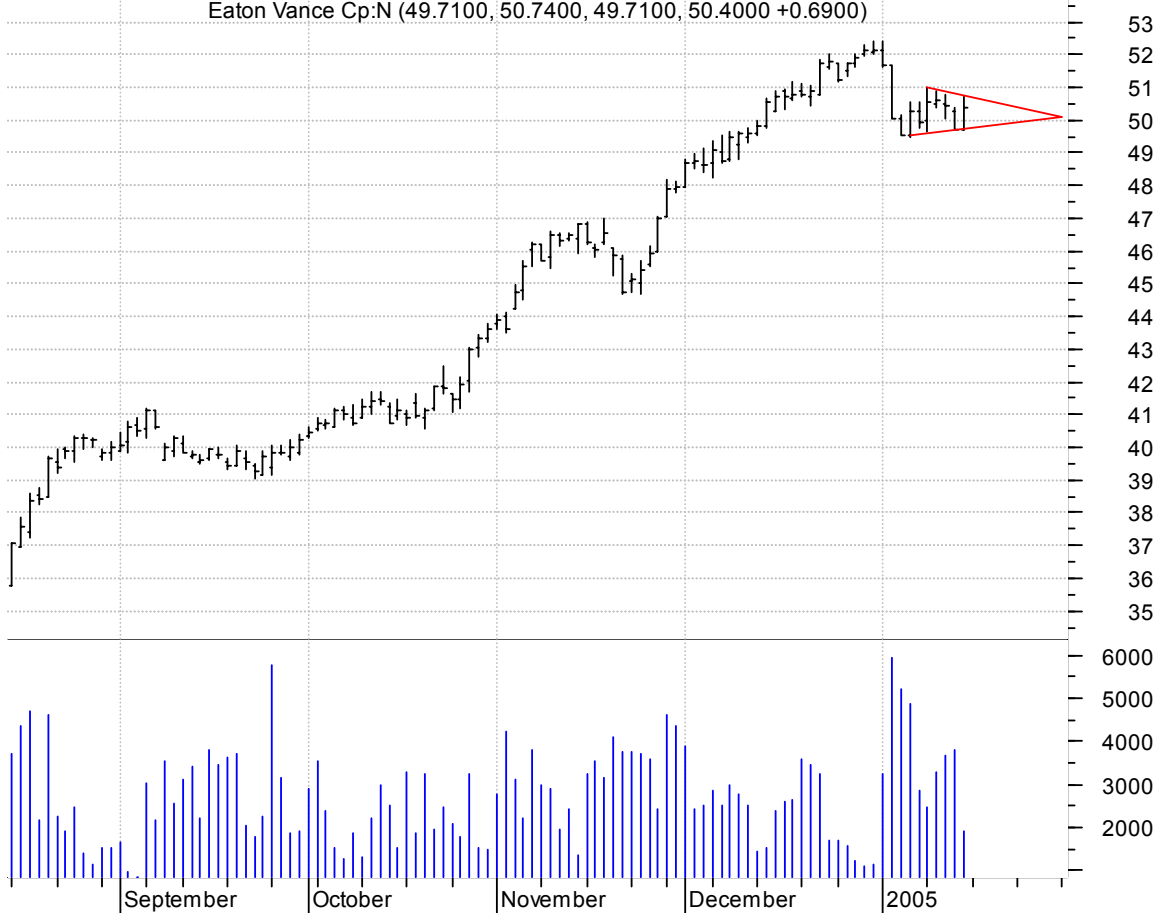
EQIX falling wedge / buy on upside brkout on increased volume

EQUINIX INC:OTC (41.2300, 41.5000, 40.9500, 41.4700 +0.4300)



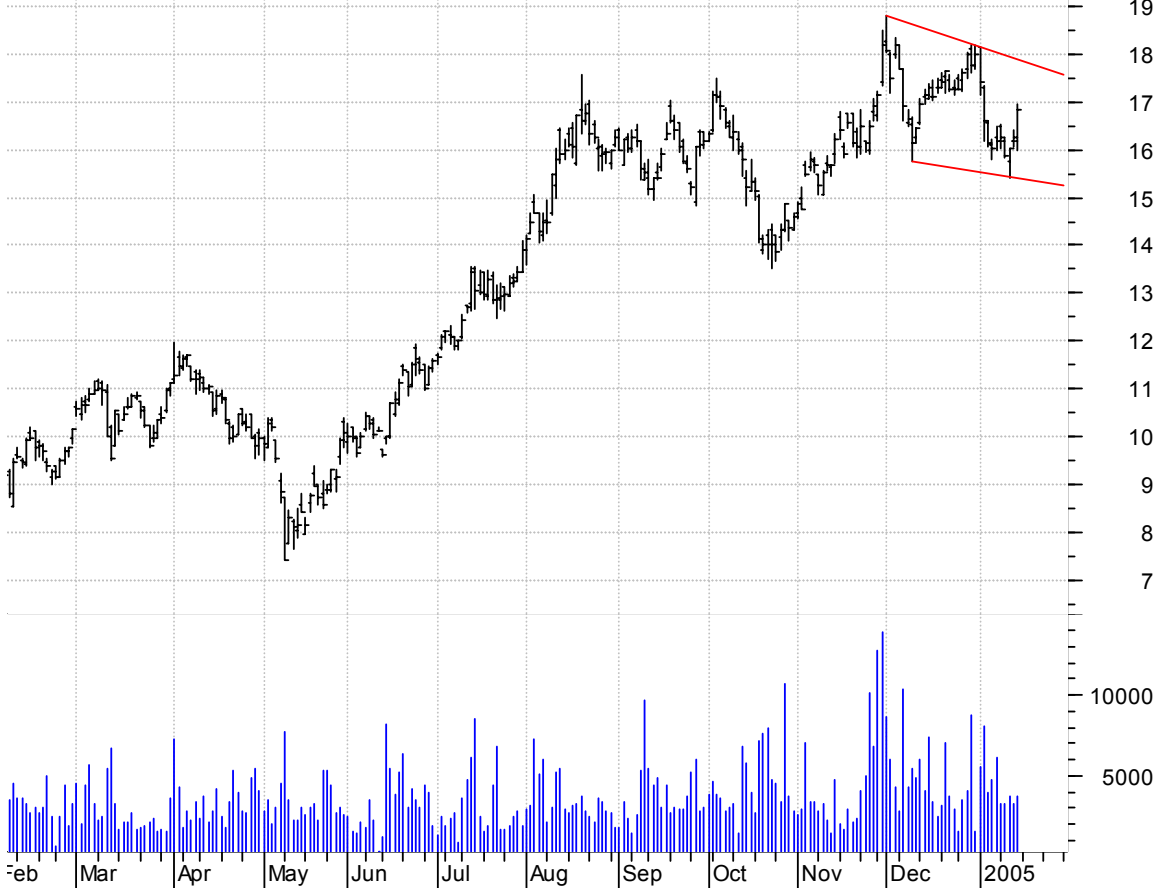
EV symm. tri. preceded by 'pole-like' move / sell on downside brkout on increased volume

Eaton Vance Cp:N (49.7100, 50.7400, 49.7100, 50.4000 +0.6900)



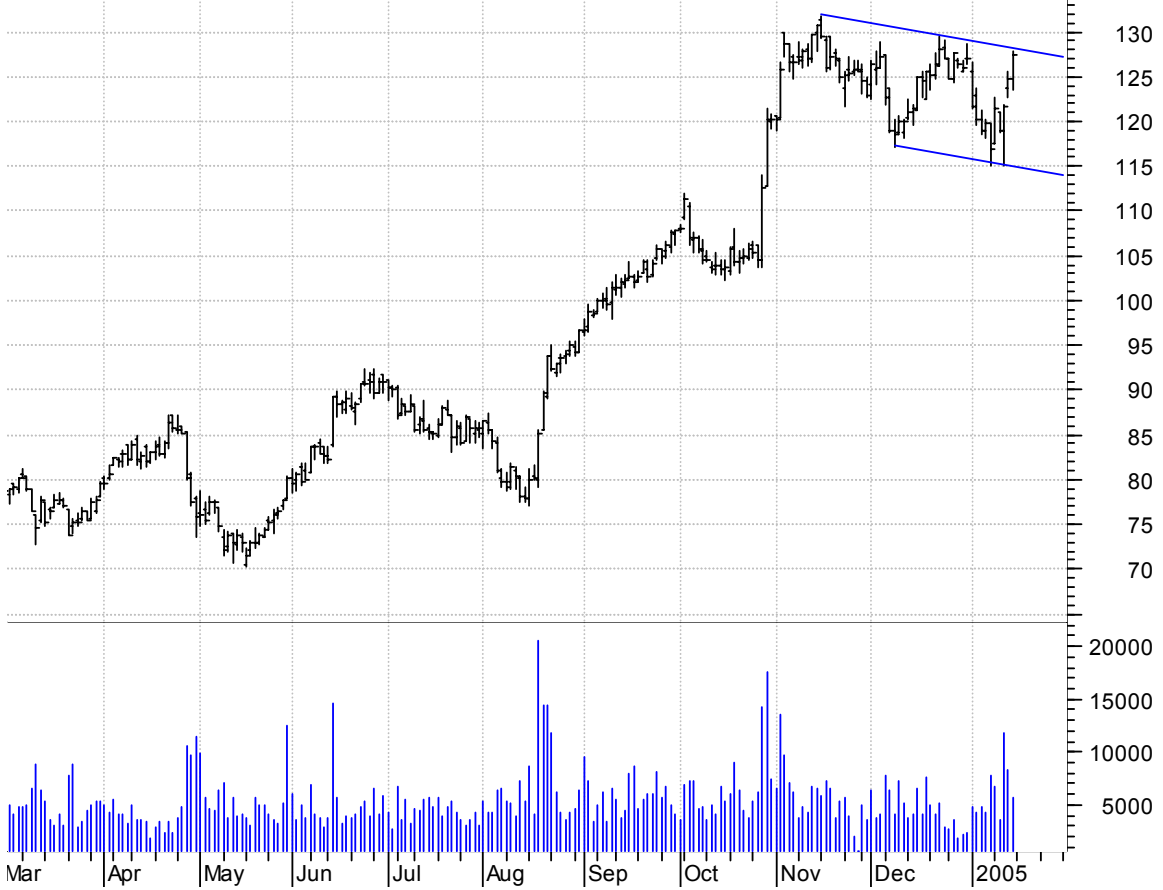
GGB falling wedge / buy on upside breakout on increased volume

Gerdau SA:NYSE (16.2000, 16.9400, 16.0000, 16.8500 +0.5800)

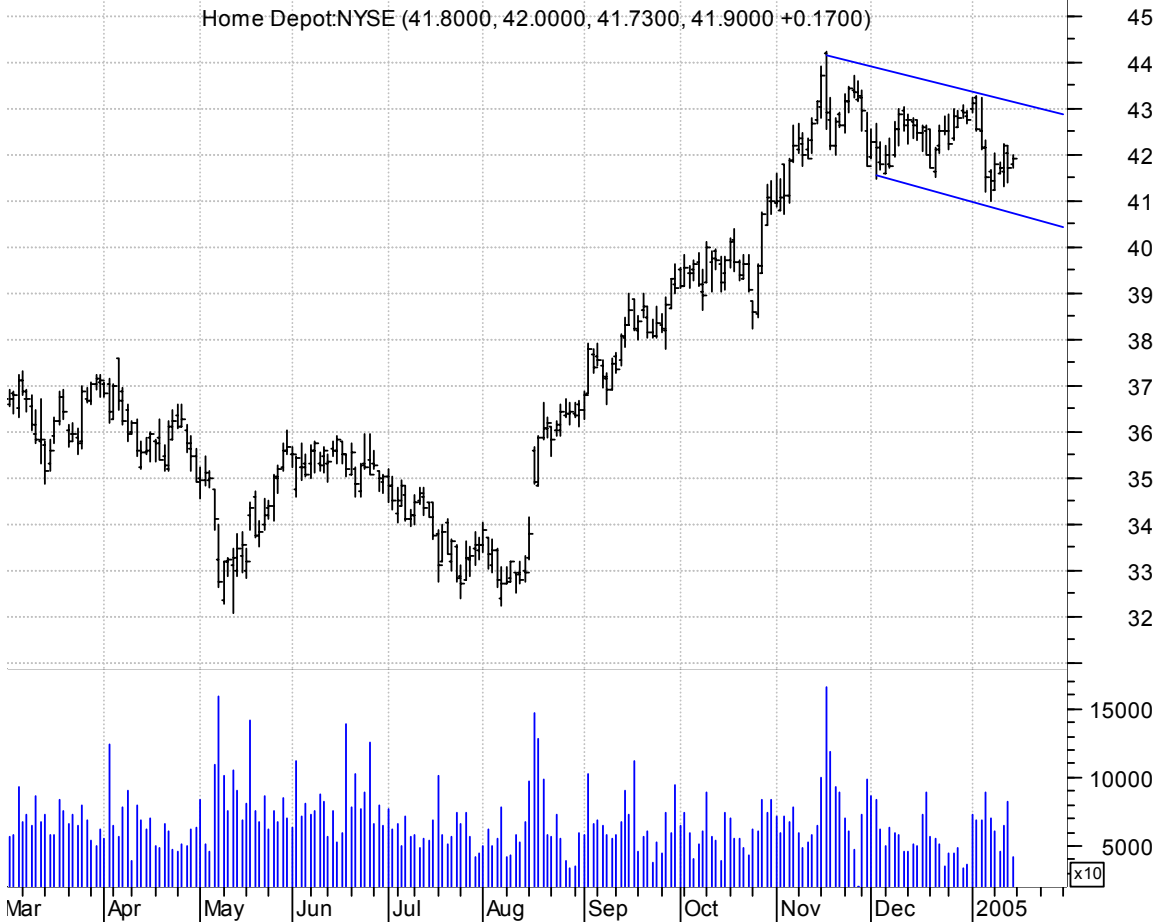


HAR bullish flagging (seen even better on a wkly chart) / buy on upside breakout on increased volume

Harman Int'l Ind (124.820, 127.900, 123.570, 127.460 +2.6400)



HD bullish flag / buy on upside breakout on increased volume



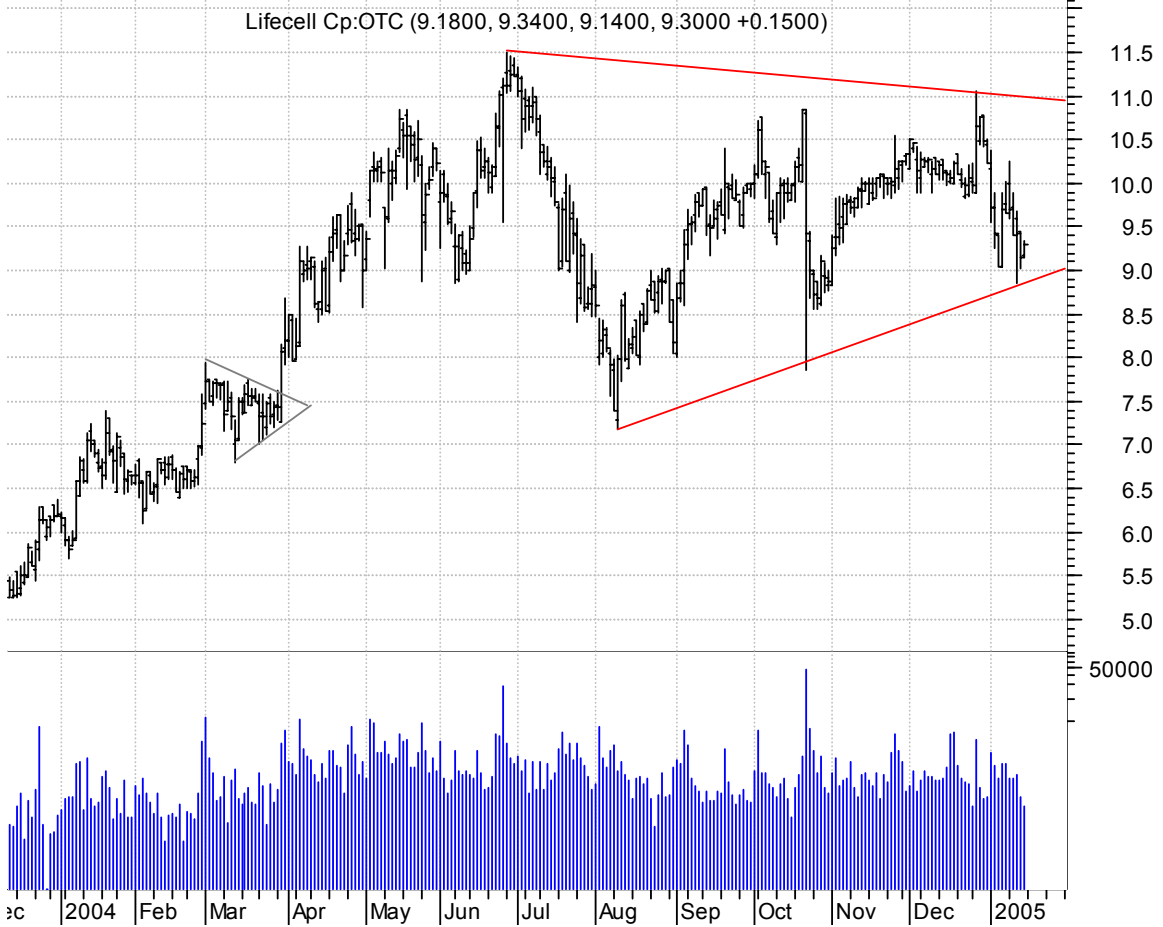
IPMT sloppy falling wedge (discounting spike down day) preceded by 'pole-like' move / buy on upside breakout on increased volume



LCAV symm. tri. preceded by 'pole-like' move / buy on upside brkout on increased volume



LIFC symm. tri. / buy on upside brkout on increased volume



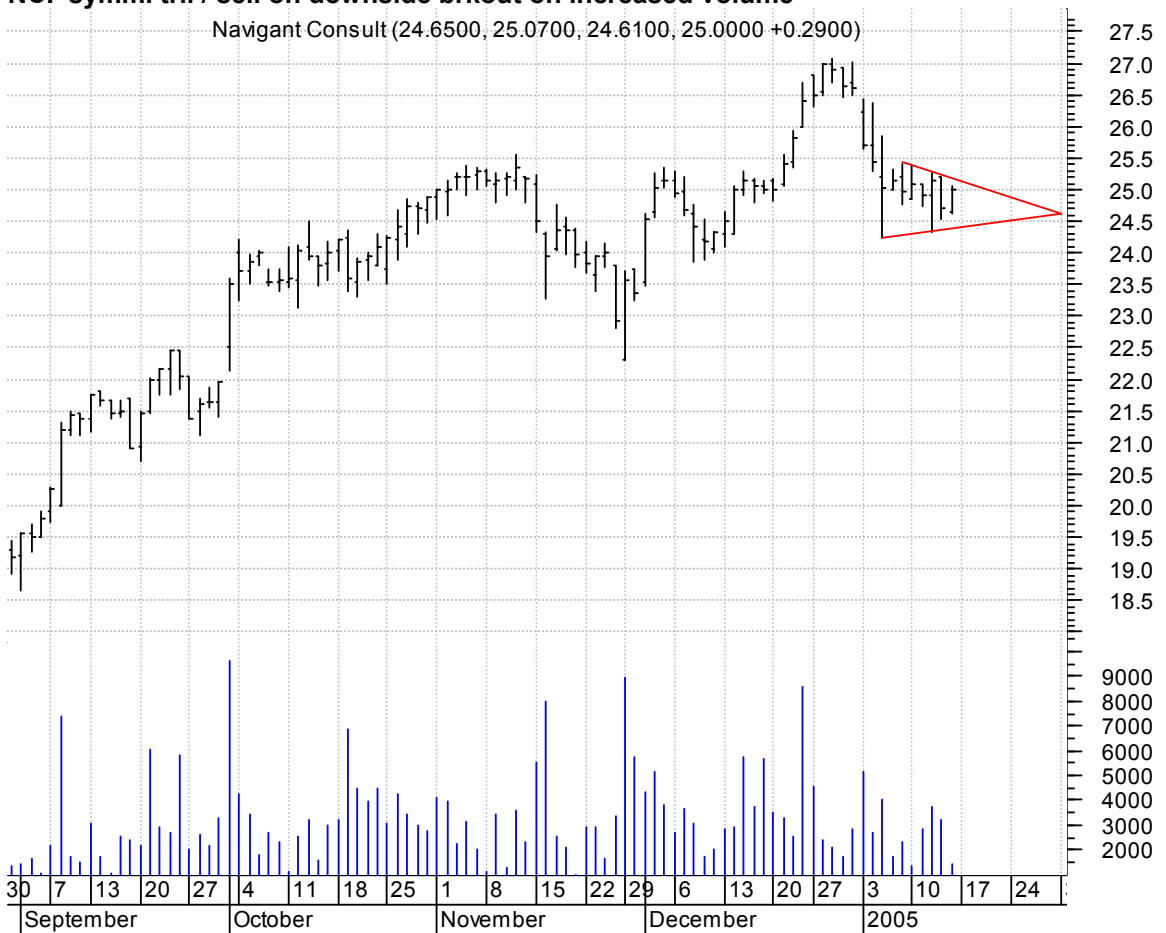
MVK bullish flagging / buy on upside breakout on increased volume

Maverick Tube Cp (29.9700, 30.8400, 29.7700, 30.8100 +1.0400)



NCI symm. tri. / sell on downside breakout on increased volume

Navigant Consult (24.6500, 25.0700, 24.6100, 25.0000 +0.2900)



NKE rising wedge / sell on downside brkout on increased volume

Nike Inc Class B (88.1000, 88.9500, 87.8500, 88.9500 +0.9300)



OIL symm. tri. / buy on upside brkout on increased volume

Oceaneering Intl (36.3000, 36.7900, 35.7800, 36.7800 +0.4900)



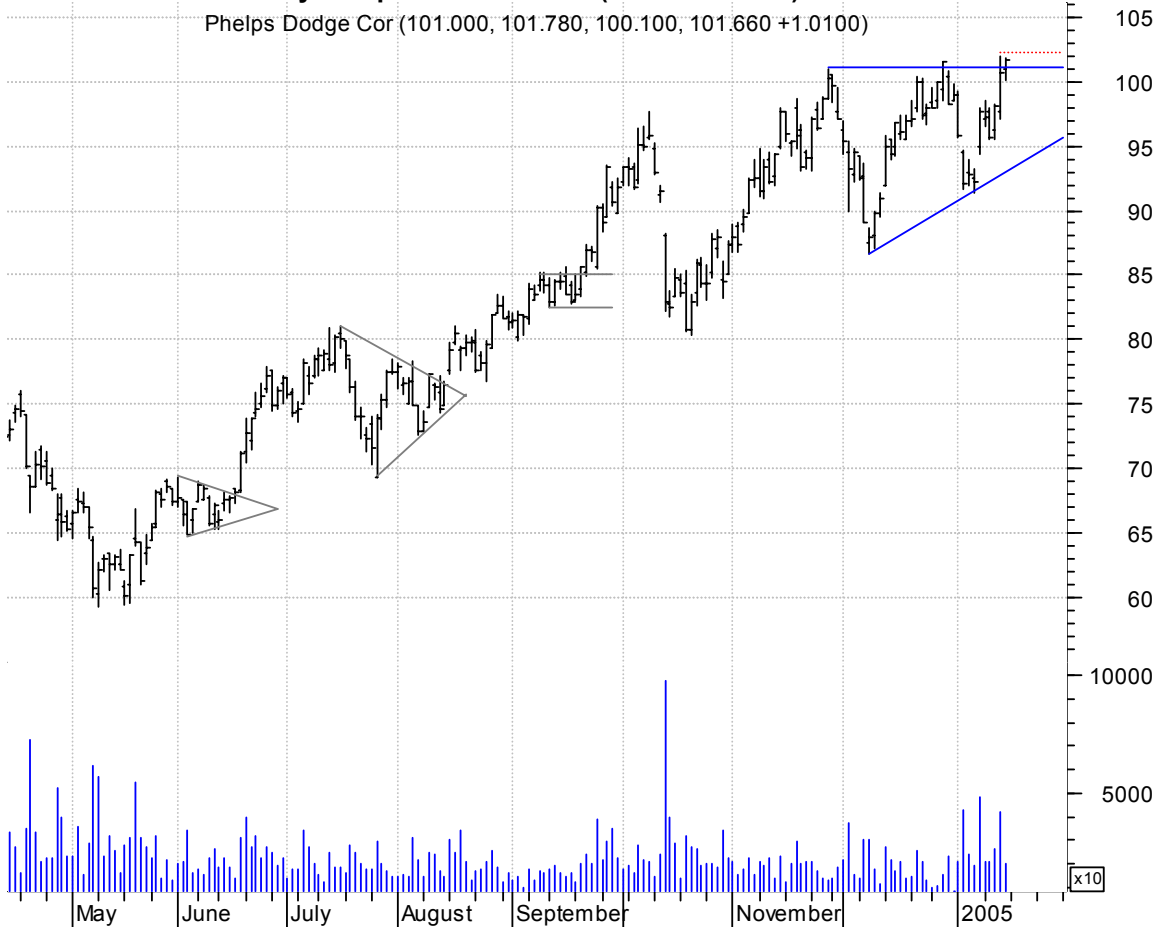
PBCP bullish flagging / buy on upside brkout on increased volume

Provident Bancor (12.8800, 12.9500, 12.8200, 12.9400 +0.0600)

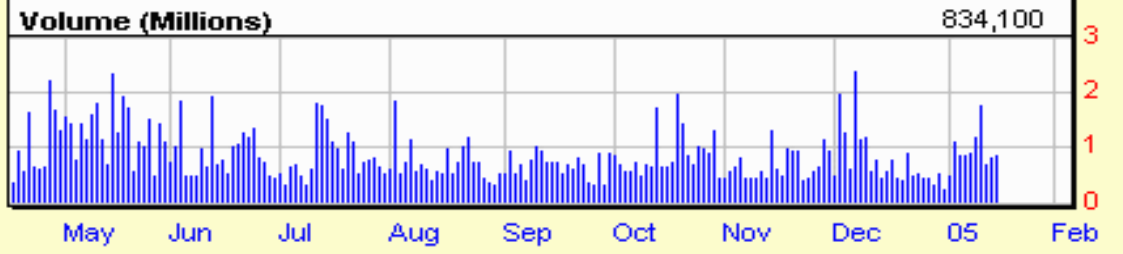


PD asc. tri. brkout / buy on upside follow-thru (dotted red line) on increased volume

Phelps Dodge Cor (101.000, 101.780, 100.100, 101.660 +1.0100)



PKX falling wedge brkout / buy on upside continuation on increased volume



PLCE symm. tri. / buy on upside brkout on increased volume



ROV bull flag / buy on upside brkout on increased volume

Rayovac Corp:NYS (37.4800, 37.7000, 37.2700, 37.5800 +0.1000)



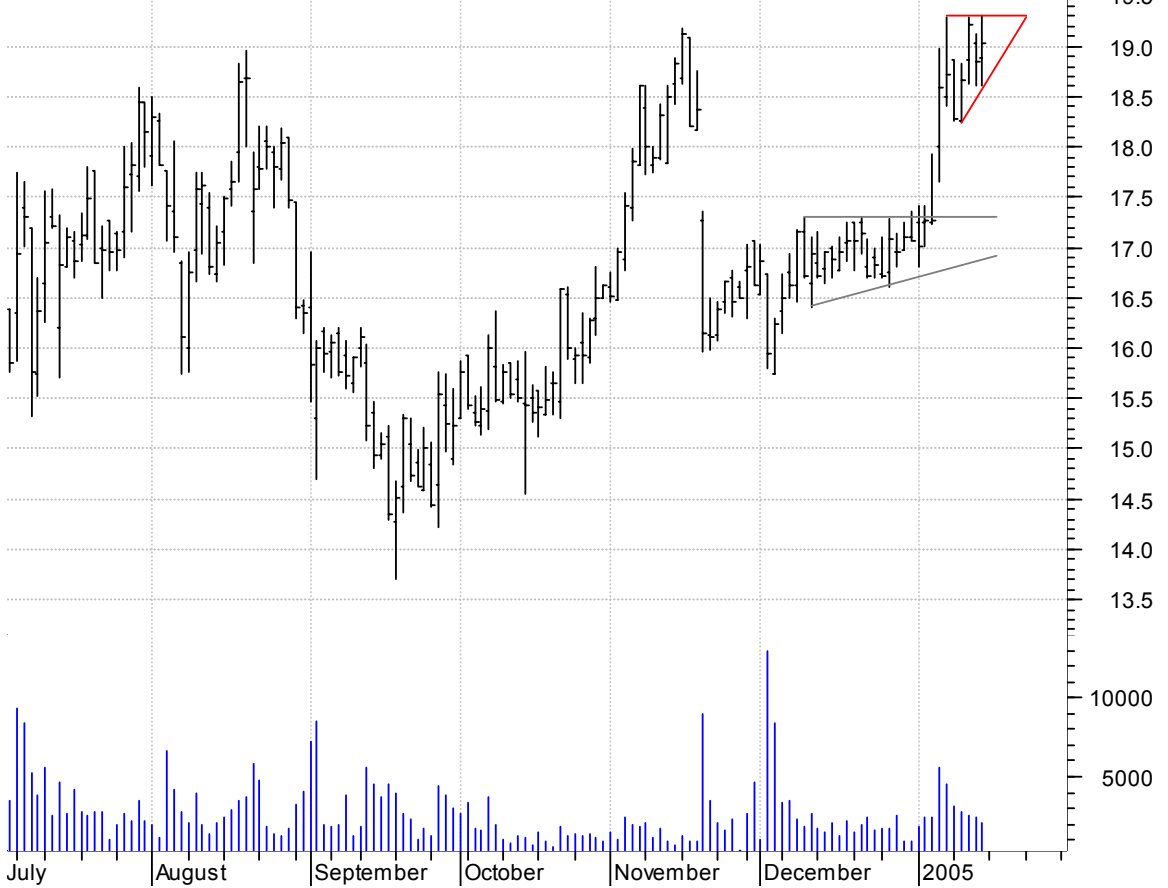
SFNT asc. tri. / buy on upside brkout on increased volume

SafeNet Inc:OTC (35.0200, 36.4000, 34.9600, 36.2200 +0.2800)



SMRT asc. tri. preceded by 'pole-like' move / buy on upside brkout on increased volume

Stein Mart Inc:O (18.8800, 19.3000, 18.6000, 19.0300 +0.1900)



SPN symm. tri. / buy on upside brkout on increased volume

Superior Energy (15.4500, 15.5500, 15.2900, 15.5100 +0.1100)



STK sloppy bullish flagging / buy on upside brkout on increased volume

Storage Technolo (32.5400, 32.5400, 31.8900, 32.2900 -0.2500)



STTX symm. tri. / buy on upside brkout thru dotted red line on increased volume

Steel Technologi (28.0000, 29.4200, 27.9100, 29.1200 +1.4700)



TIBX falling wedge / buy on upside brkout on increased volume



TPTH sloppy bullish flagging / buy on upside brkout on increased volume



URBN bullish flag (better seen on a wkly chart) / buy on upside brkout on larger than normal volume



VPI falling wedge / buy on upside brkout on increased volume



VRC symm. tri. / buy on upside brkout on increased volume

Varco Int'l Inc:N (28.9000, 29.5800, 28.7200, 29.5600 +0.6200)



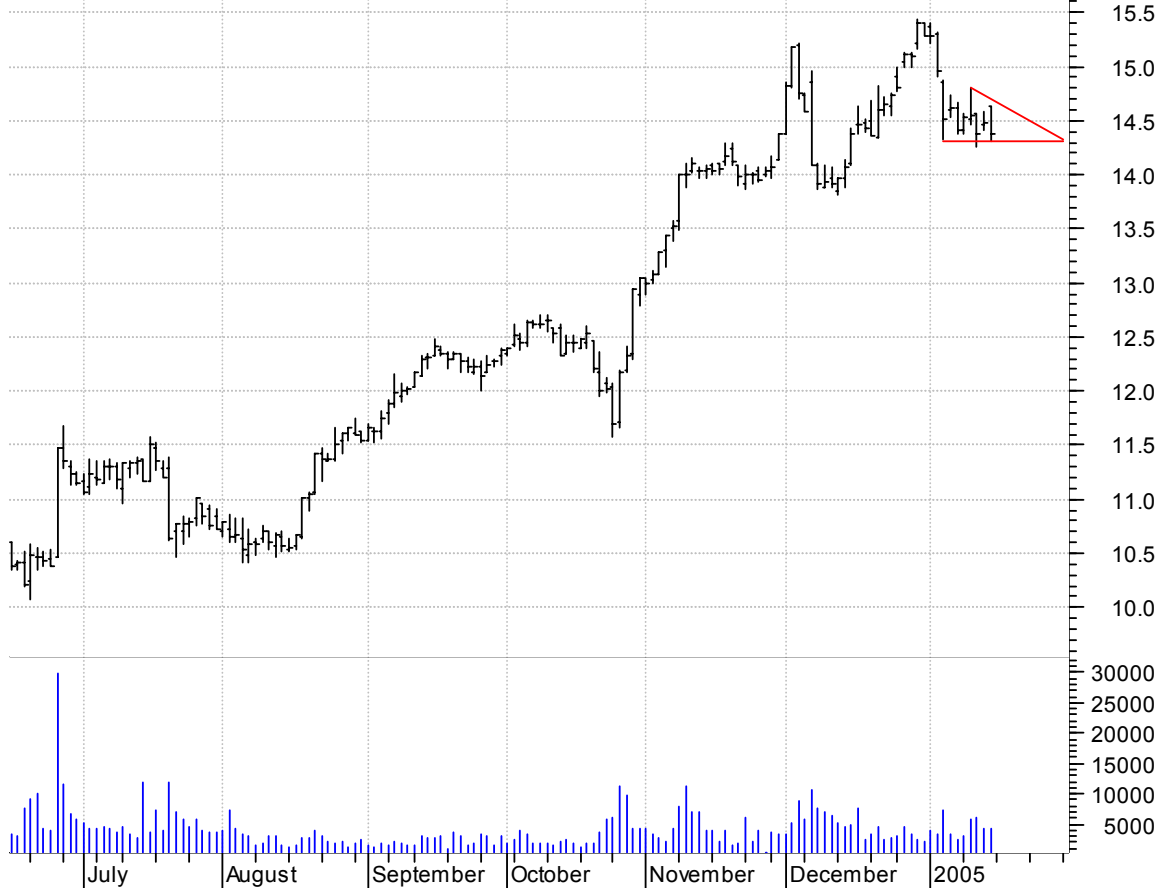
WES bull flag / buy on upside brkout on increased volume

Westcorp:NYSE (45.5500, 45.9000, 45.2100, 45.5600 -0.0900)



WHI desc. tri. / sell on downside brkout on increased volume

W Holding Co Inc (14.6400, 14.6400, 14.3100, 14.3700 -0.1100)



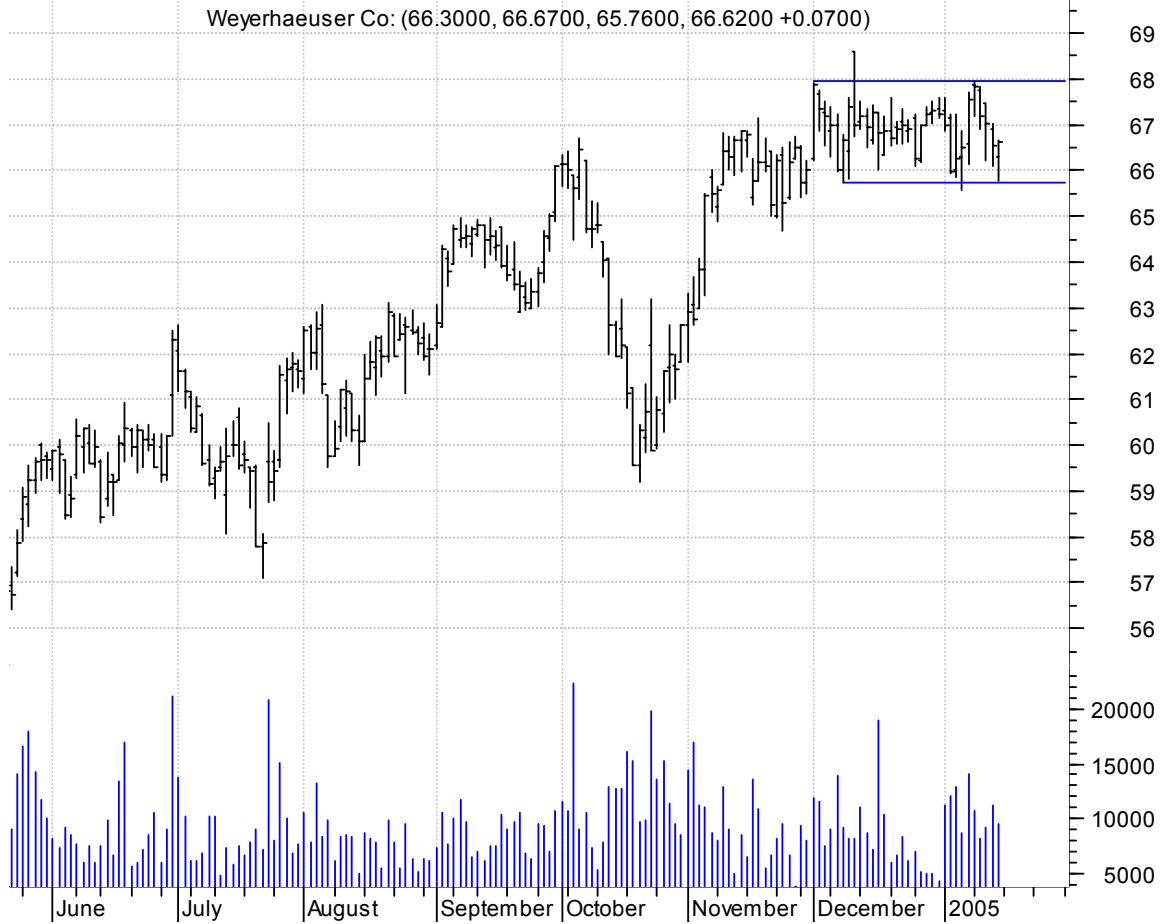
WITS asc. tri. / buy on upside brkout on increased volume

Witness Systems (16.6000, 17.0500, 16.6000, 16.8000 +0.000)



WI sloppy rectangle (discounting spike day) / buy on upside brkout on increased volume

Weyerhaeuser Co: (66.3000, 66.6700, 65.7600, 66.6200 +0.0700)



XPRSA symm. tri. / buy on upside brkout on increased volume

US Xpress Enterp (27.0600, 27.3000, 26.7100, 27.0200 +0.1400)



chartpatterns.com
Chart Pattern Analysis for Timing the Markets

KMatras@aol.com