

ARO falling wedge preceded by 'pole-like' move / buy on upside brkout on increased volume



ASTE asc. tri. preceded by 'pole-like' move / buy on upside brkout on increased volume



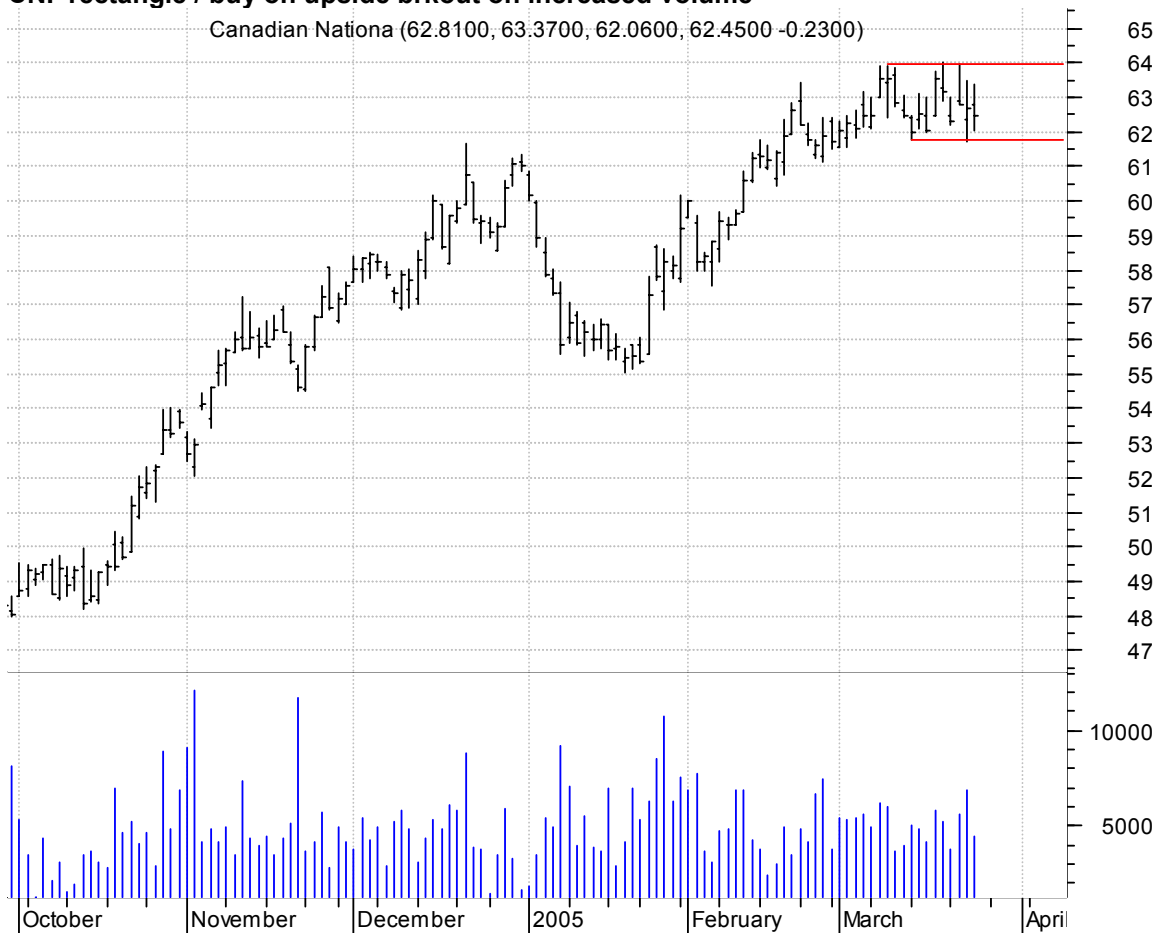
CMCO asc. tri. / buy on upside brkout on increased volume

Columbus McKinnon (12.5100, 13.2000, 12.2200, 12.8500 -0.0100)



CNI rectangle / buy on upside brkout on increased volume

Canadian National (62.8100, 63.3700, 62.0600, 62.4500 -0.2300)



CSG symm. tri. / buy on upside brkout on increased volume



DNYX symm. tri. / buy on upside brkout on increased volume



DSPG symm. tri. / buy on upside brkout on increased volume

DSP Group Inc:OT (25.2400, 25.9700, 25.2400, 25.9300 +0.7300)



EMN symm. tri. / buy on upside brkout on increased volume

Eastman Chemical (59.8300, 60.1800, 59.5600, 59.7100 +0.1300)



G symm. tri. preceded by 'pole-like' move / buy on upside brkout on increased volume



ITRI asc. tri. / buy on upside brkout on increased volume



JLL bullish pennant / buy on upside brkout on increased volume

Jones Lang Lasal (46.2300, 47.5000, 46.2300, 46.7000 +0.5400)



KMG symm. tri. preceded by 'pole-like' move / buy on upside brkout on increased volume

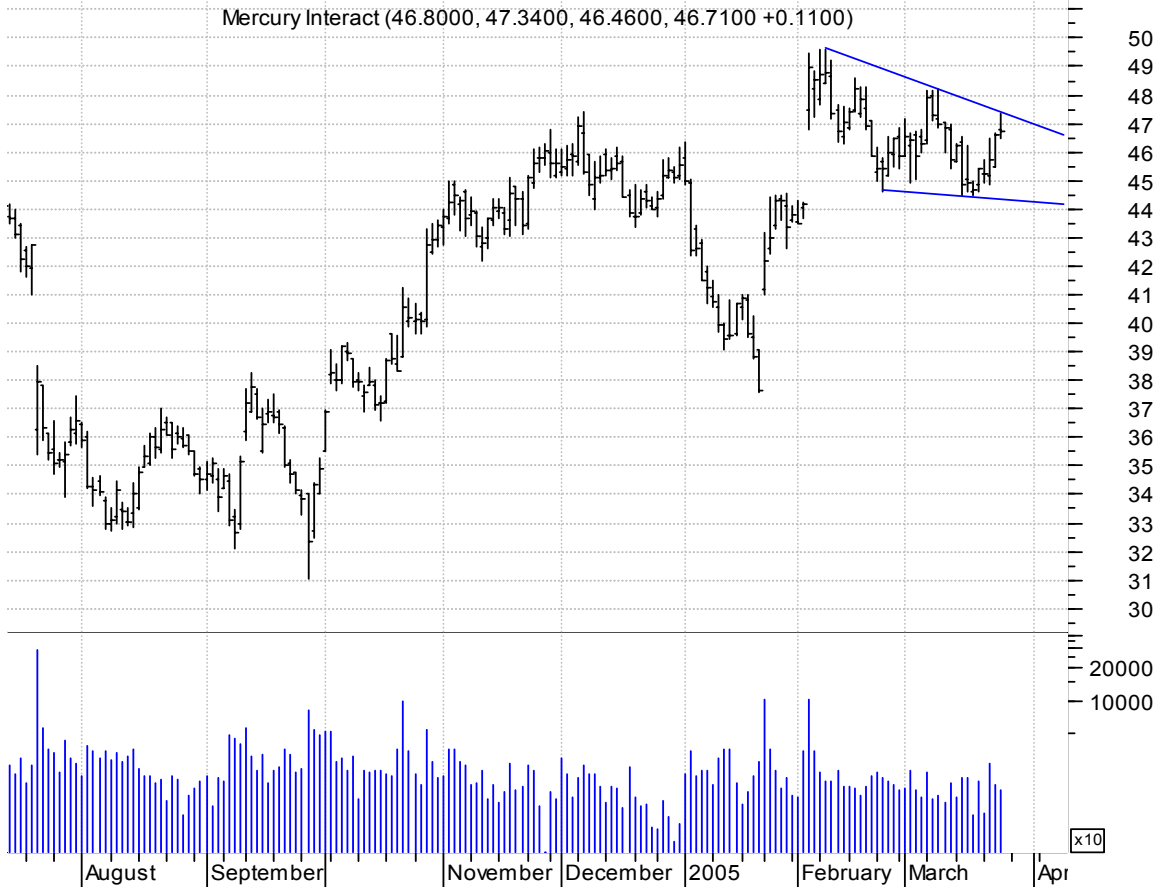
Kerr-McGee:NYSE (78.9000, 80.2500, 77.5500, 78.5500 +0.0900)



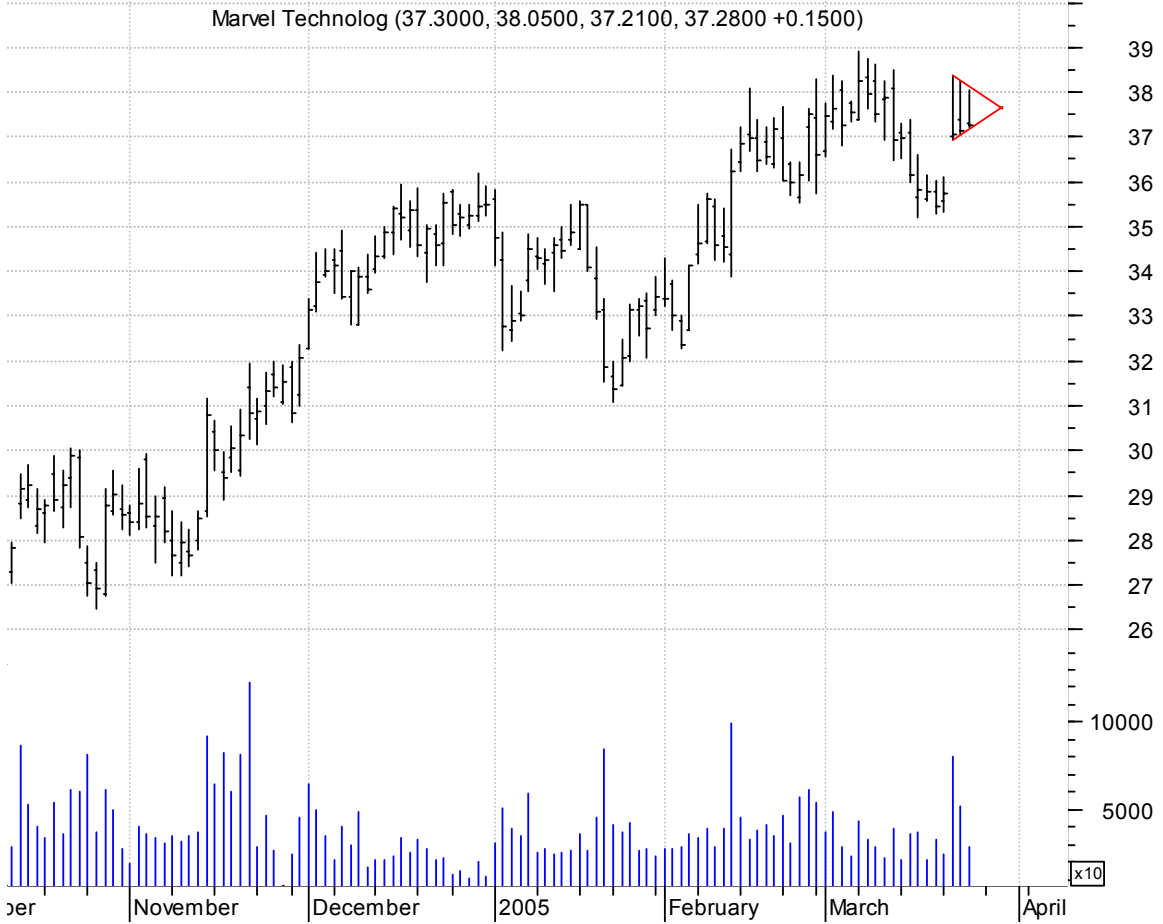
LRW symm. tri. (preceded by 'pole-like' move) brkout & retracement / buy on upside brkout thru dotted red line on increased volume



MERQ falling wedge preceded by 'pole-like' move / buy on upside brkout on increased volume



MRVL bullish pennant (easier seen on intraday chart) / buy on upside brkout on increased volume

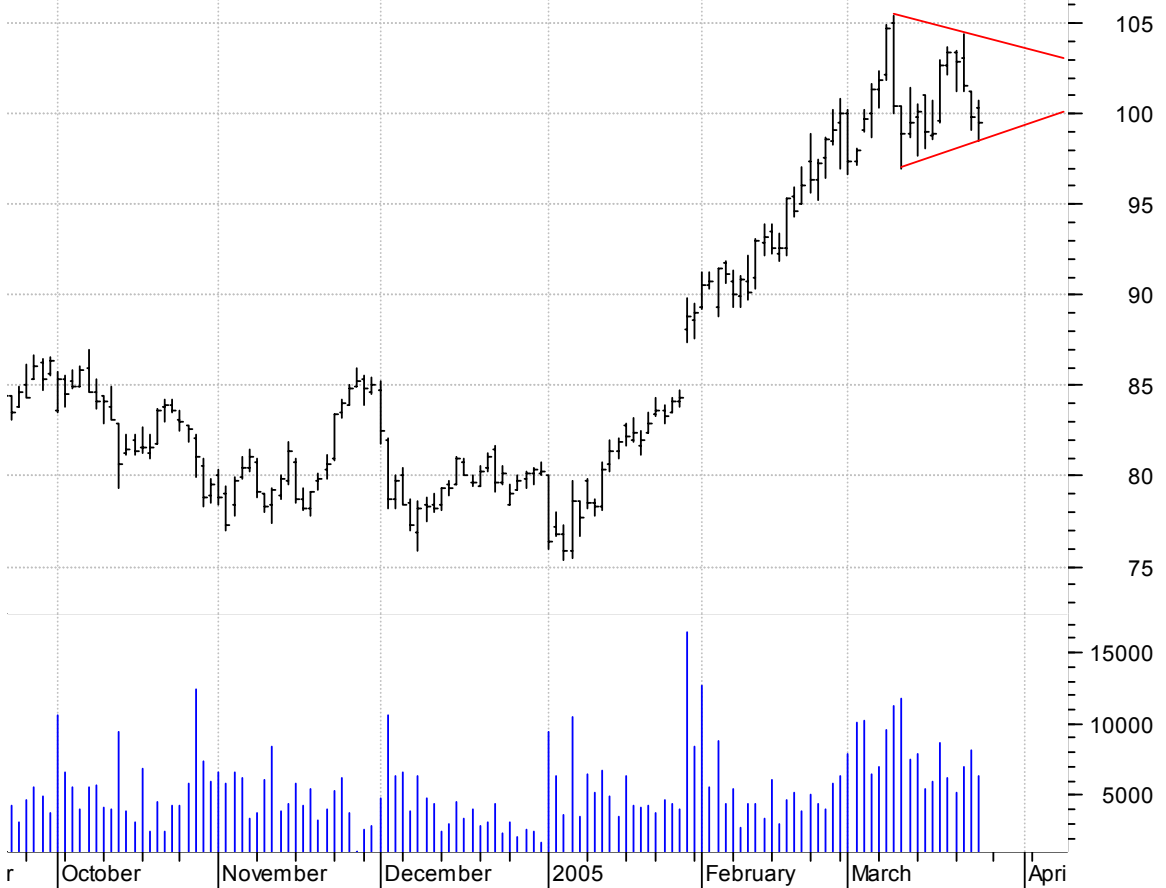


MTLG falling wedge preceded by 'pole-like' move / buy on upside brkout on increased volume



MUR symm. tri. preceded by 'pole-like' move / buy on upside brkout on increased volume

Murphy Oil Corp: (100.370, 100.700, 98.5200, 99.5600 -0.3000)



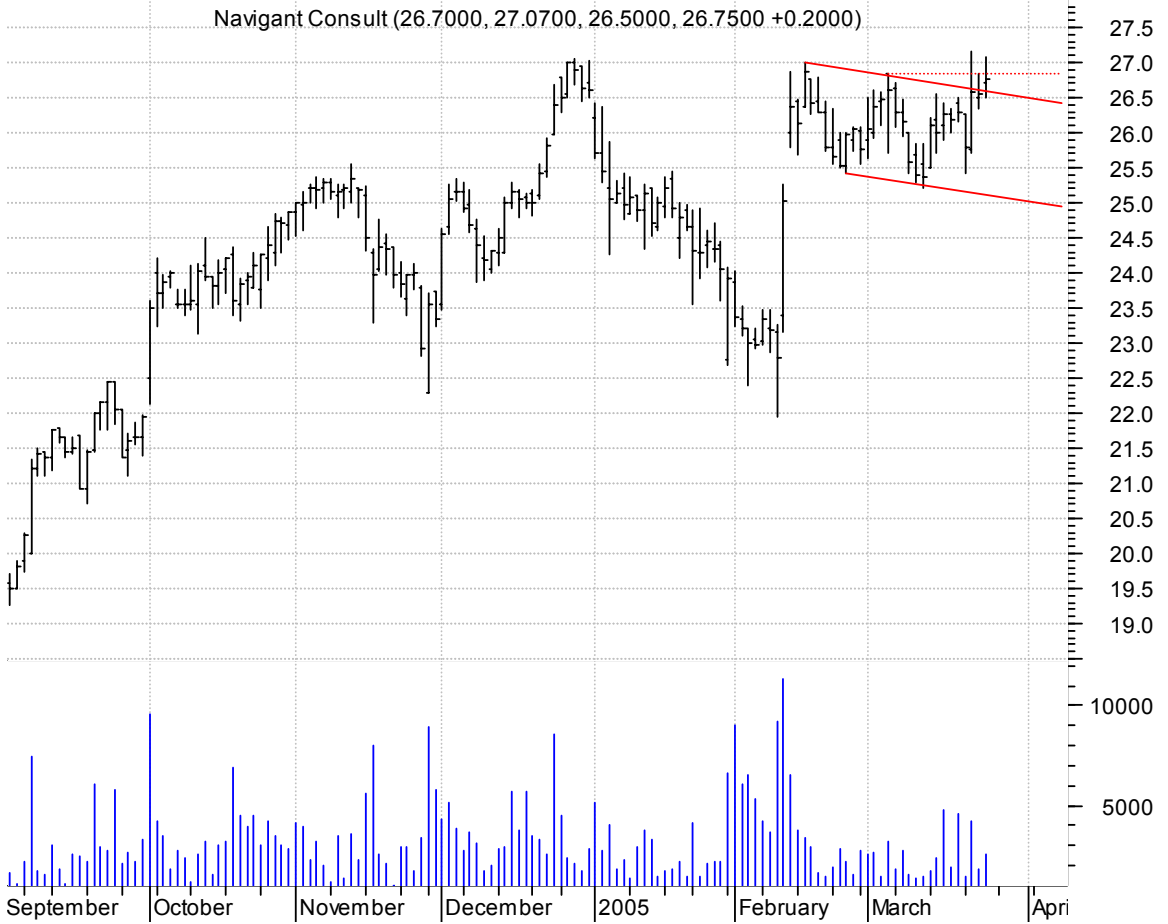
MUSA symm. tri. preceded by 'pole-like' move / sell on downside brkout on increased volume

METALS USA INC:O (21.9600, 22.3500, 21.8700, 22.0400 +0.0600)



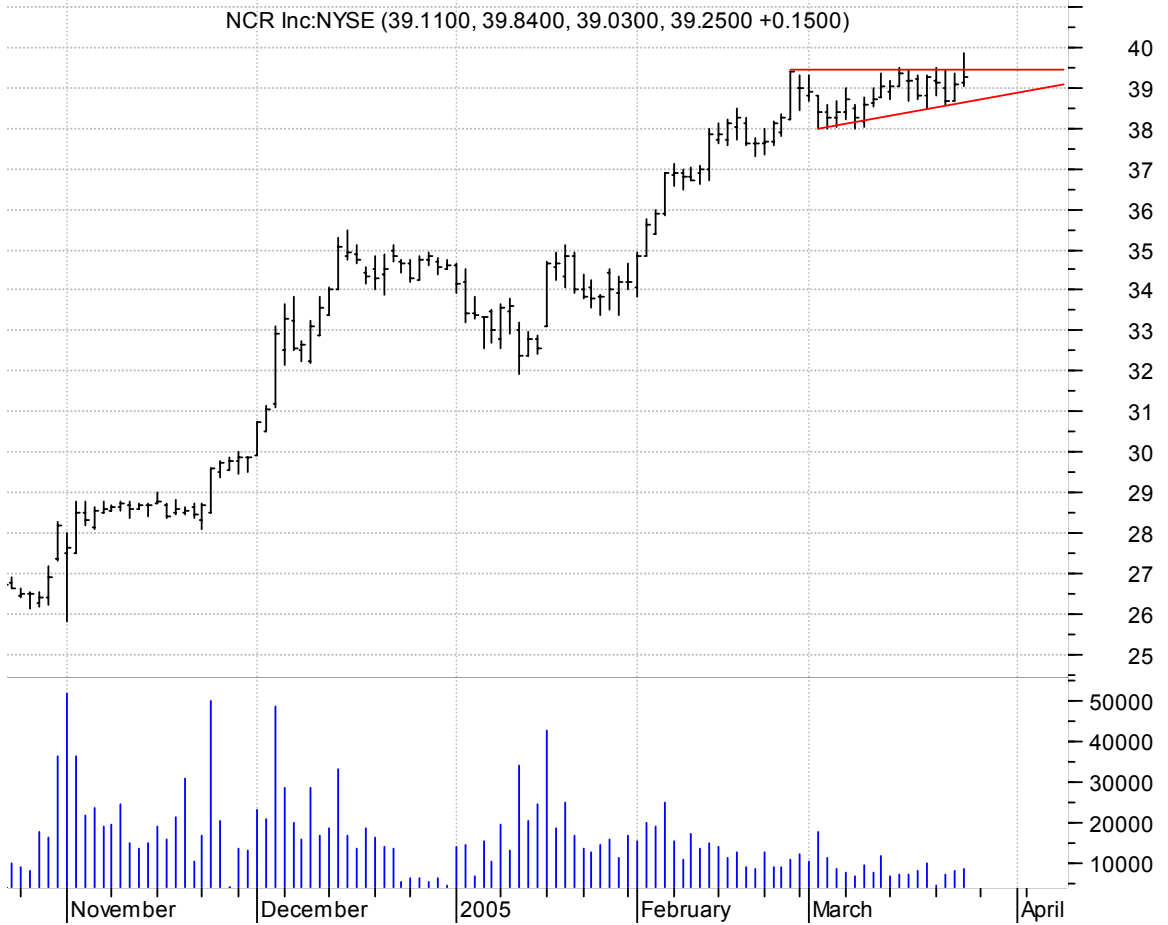
NCI bull flag brkout / buy on upside brkout thru dotted red line on increased volume

Navigant Consult (26.7000, 27.0700, 26.5000, 26.7500 +0.2000)



NCR asc. tri. / buy on upside brkout on increased volume

NCR Inc.NYSE (39.1100, 39.8400, 39.0300, 39.2500 +0.1500)



OSG symm. tri. / buy on upside brkout on increased volume

Overseas Shiphld (61.6000, 62.9800, 61.6000, 62.5500 +1.2700)

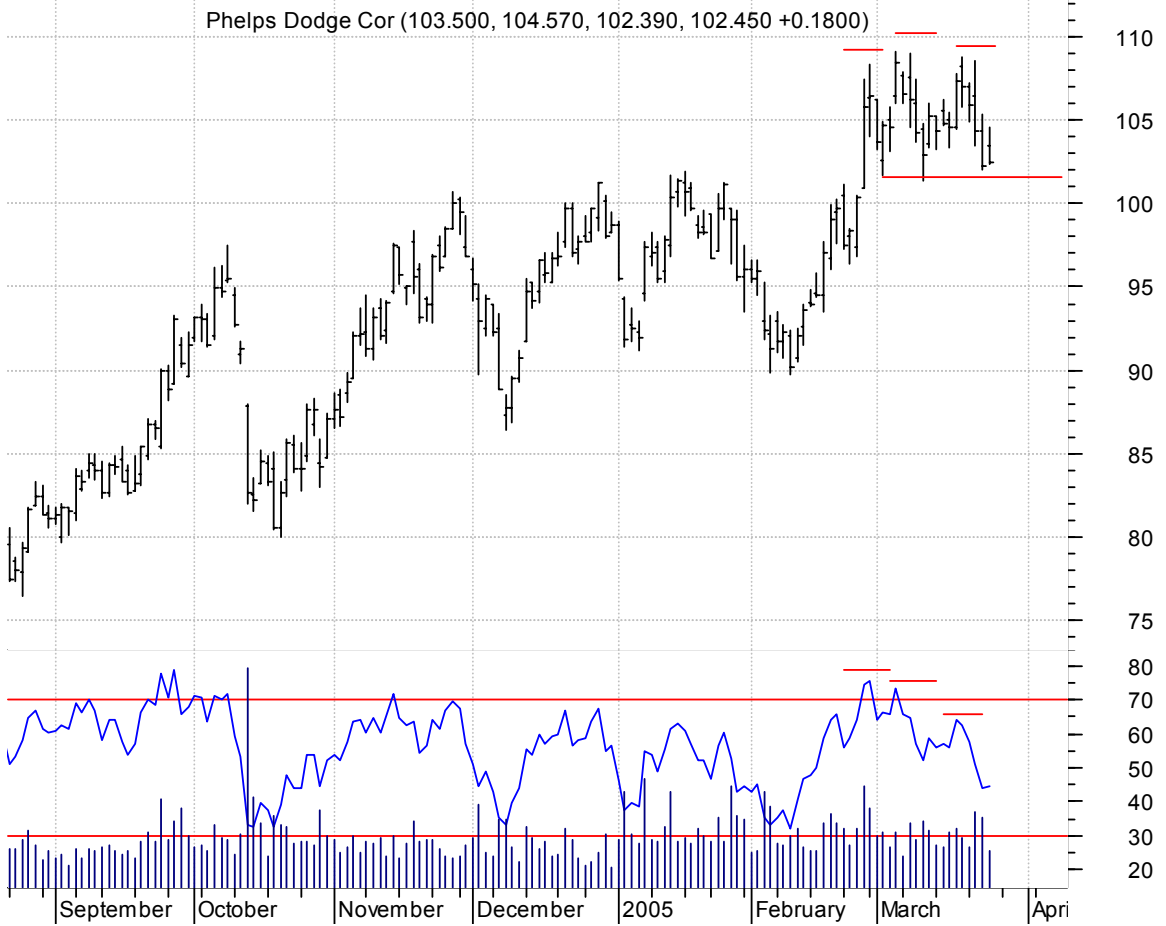


OXY bullish flagging / buy on upside brkout on increased volume

Occidental Petro (69.9500, 70.6000, 68.7300, 69.8000 +0.9300)



PD h. & sh. / sell on downside brkout on increased volume



PGIC falling wedge / buy on upside brkout on increased volume



PLAB symm. tri. preceded by 'pole-like' move / buy on upside brkout on increased volume

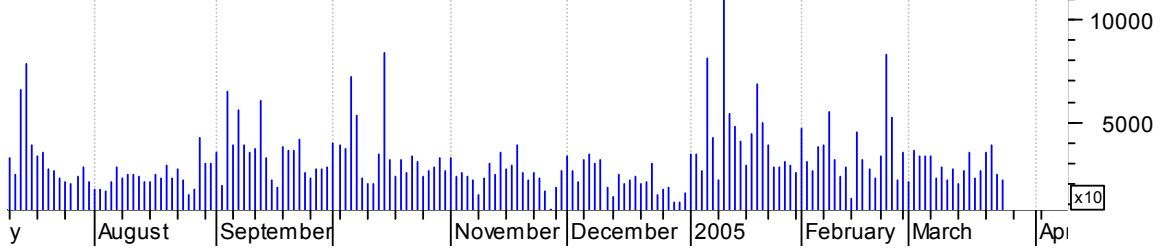
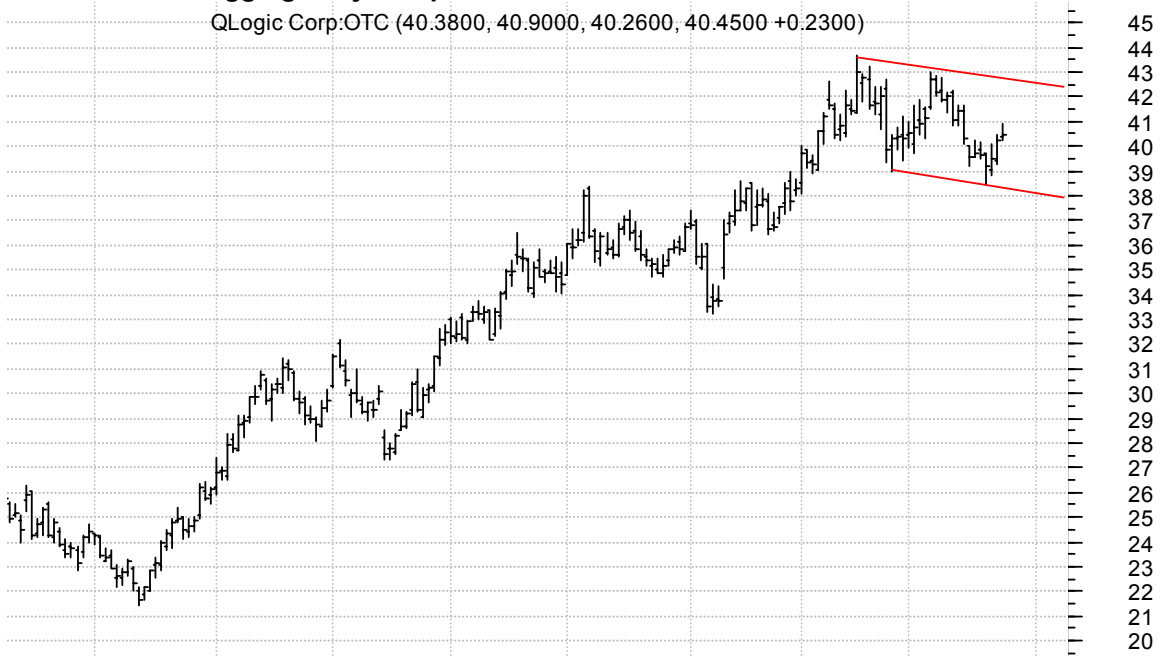


PTEN sloppy asc. tri. preceded by 'pole-like' move / buy on upside brkout on increased volume



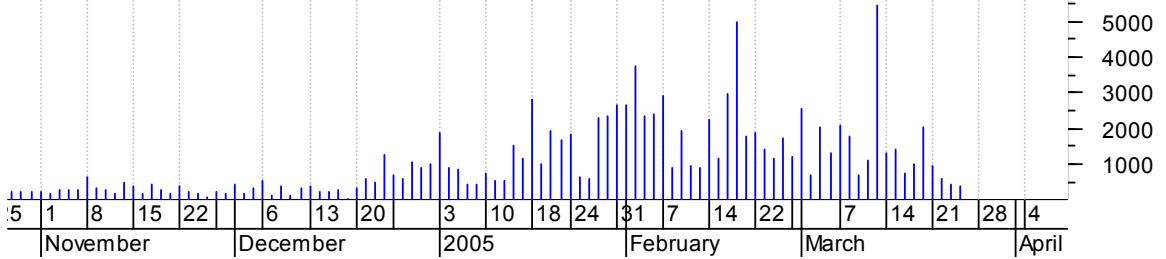
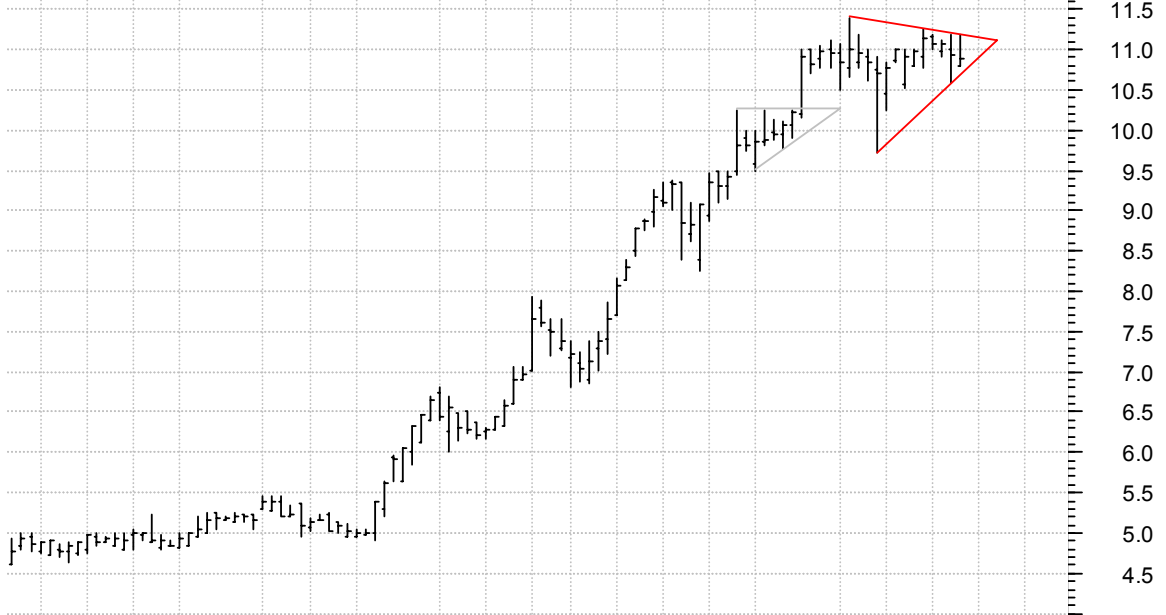
QLGC bullish flagging / buy on upside breakout on increased volume

QLogic Corp:OTC (40.3800, 40.9000, 40.2600, 40.4500 +0.2300)



SPTN symm. tri. / buy on upside breakout on increased volume

SPARTAN STORES I (10.8000, 11.1900, 10.8000, 10.8900 -0.0400)



SYXI symm. tri. / buy on upside breakout on increased volume

IXYS Corp:OTC (11.0700, 11.1700, 10.8100, 11.0400 +0.1800)

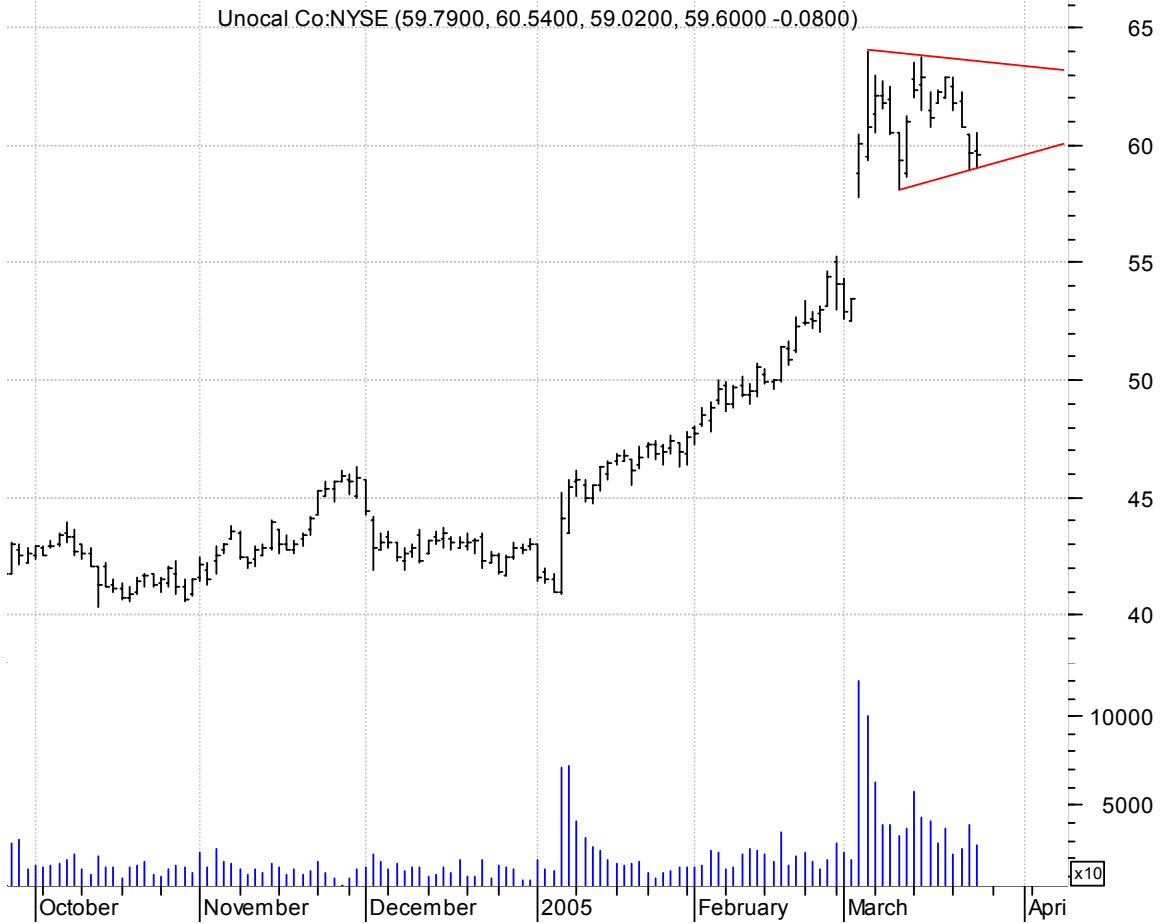


TSRA asc. tri. preceded by 'pole-like' move / buy on upside breakout on increased volume

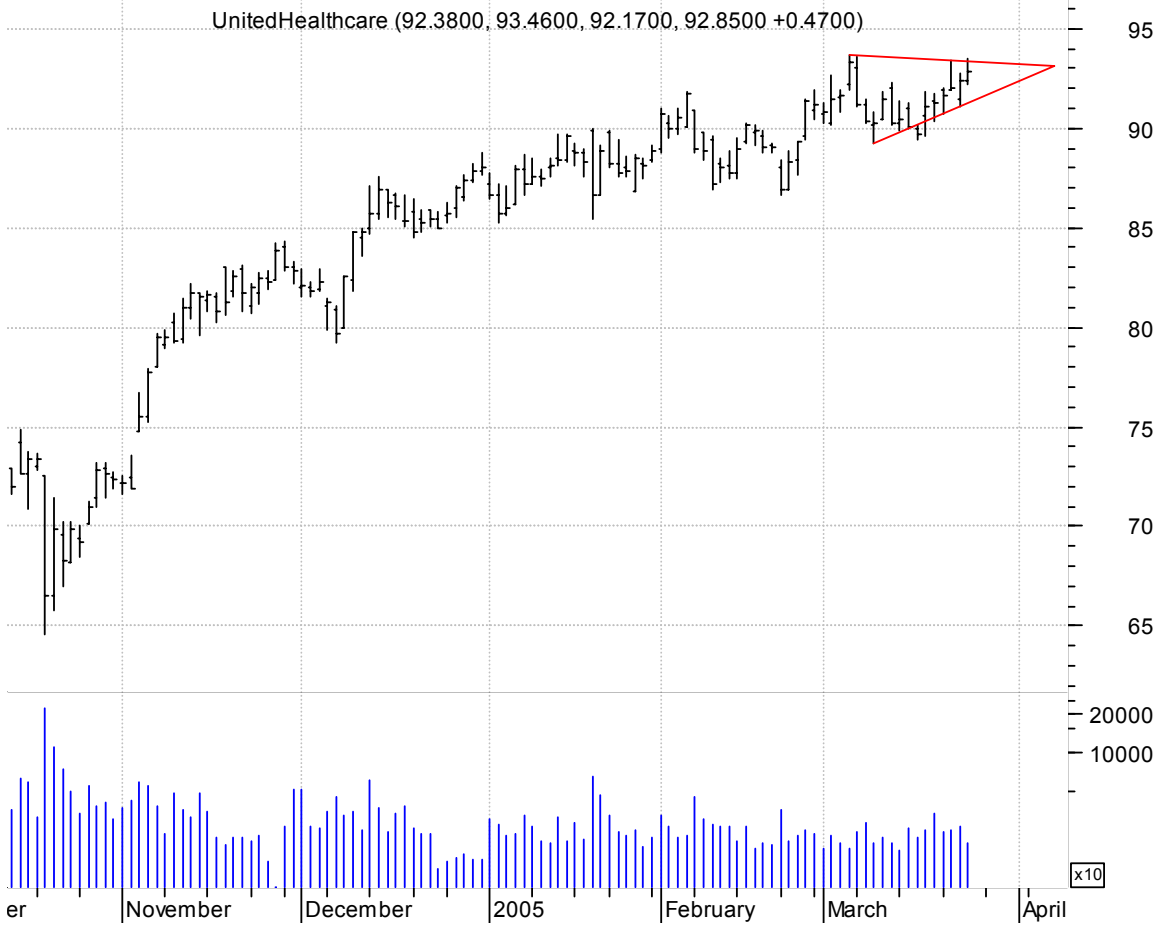
TESSERA TECHNOLO (43.0100, 43.5000, 42.1300, 42.7200 -0.1700)



UCL symm. tri. preceded by 'pole-like' move / buy on upside brkout on increased volume



UNH symm. tri. / buy on upside brkout on increased volume



chartpatterns.com
Chart Pattern Analysis for Timing the Markets

KMatras@aol.com