

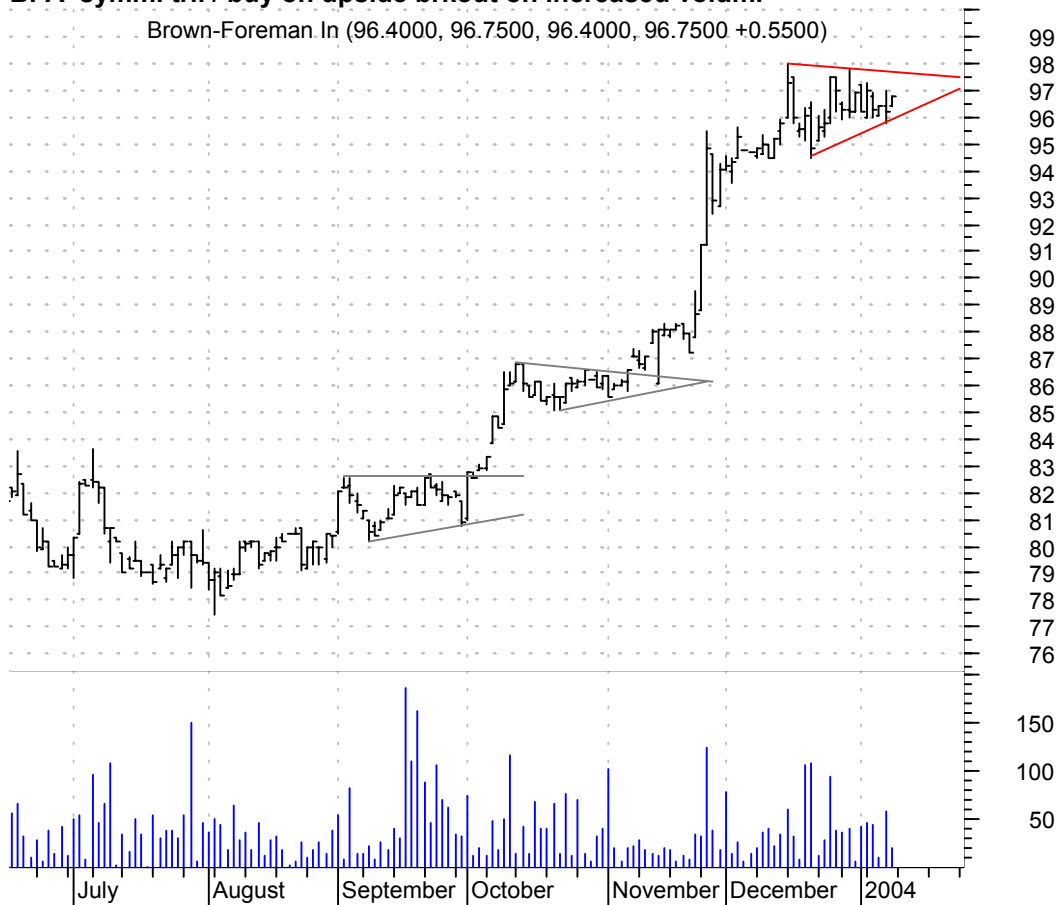
ANL falling wedge / buy on upside breakout on increased volume

American Land Le (20.1500, 20.1500, 20.0500, 20.1500 +0.0000)



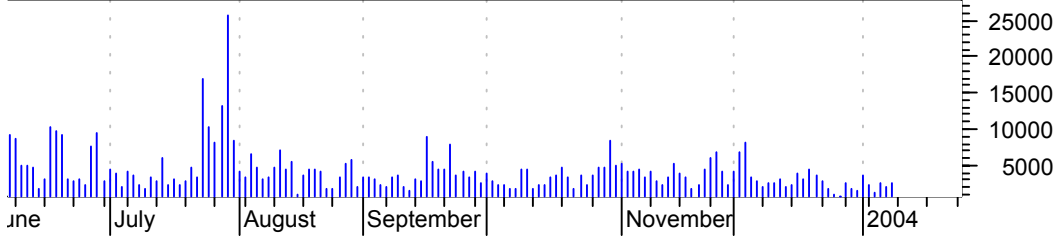
BFA symm. tri. / buy on upside breakout on increased volume

Brown-Foreman In (96.4000, 96.7500, 96.4000, 96.7500 +0.5500)



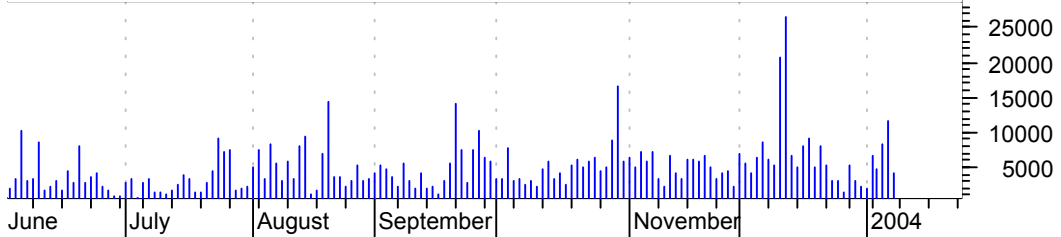
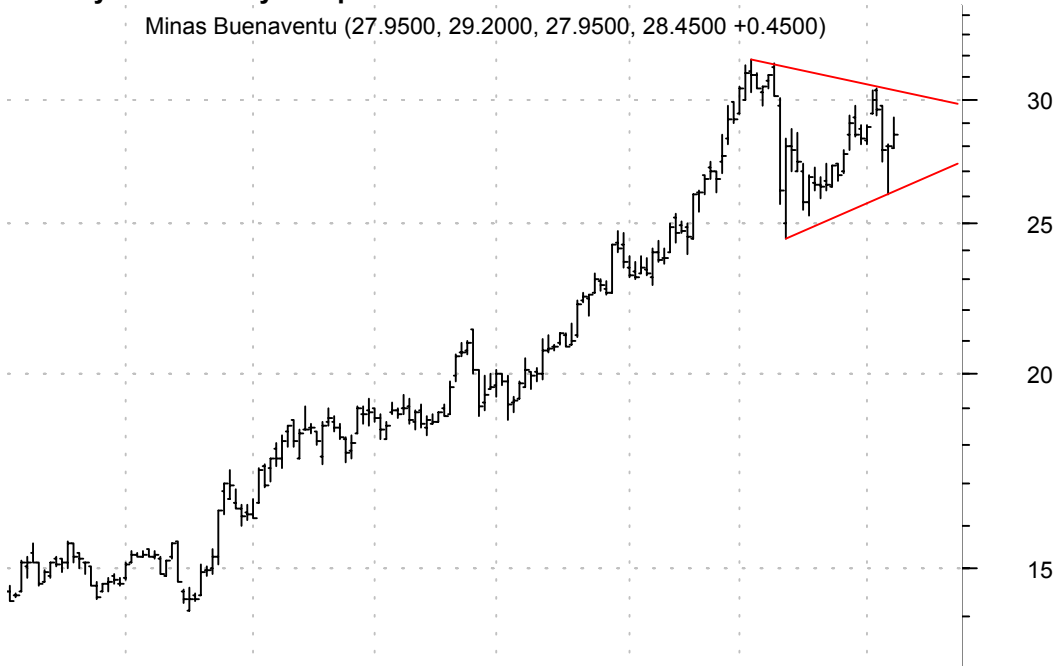
BOL symm. tri. / buy on upside brkout on increased volume

Bausch & Lomb In (52.1000, 52.2100, 51.3600, 51.4900 -0.7200)



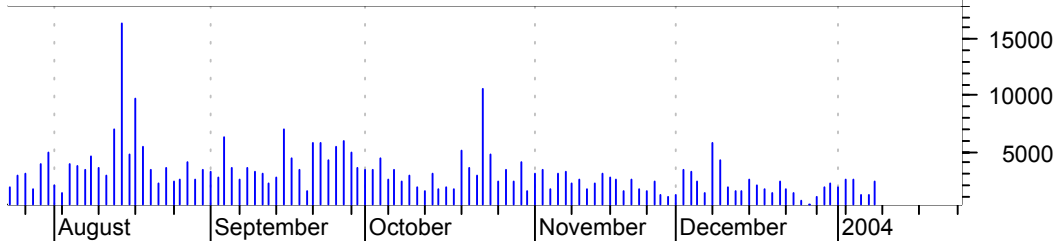
BVN symm. tri. / buy on upside brkout on increased volume

Minas Buenaventu (27.9500, 29.2000, 27.9500, 28.4500 +0.4500)



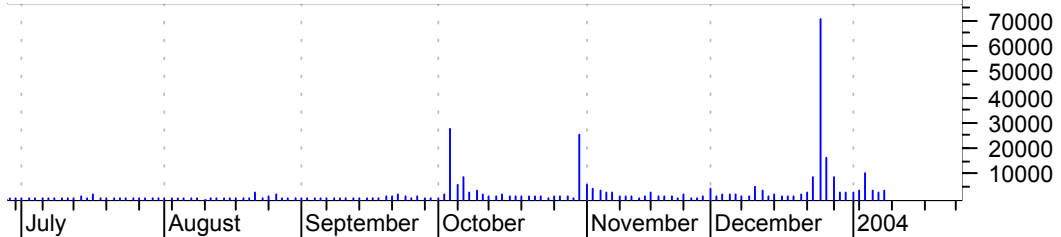
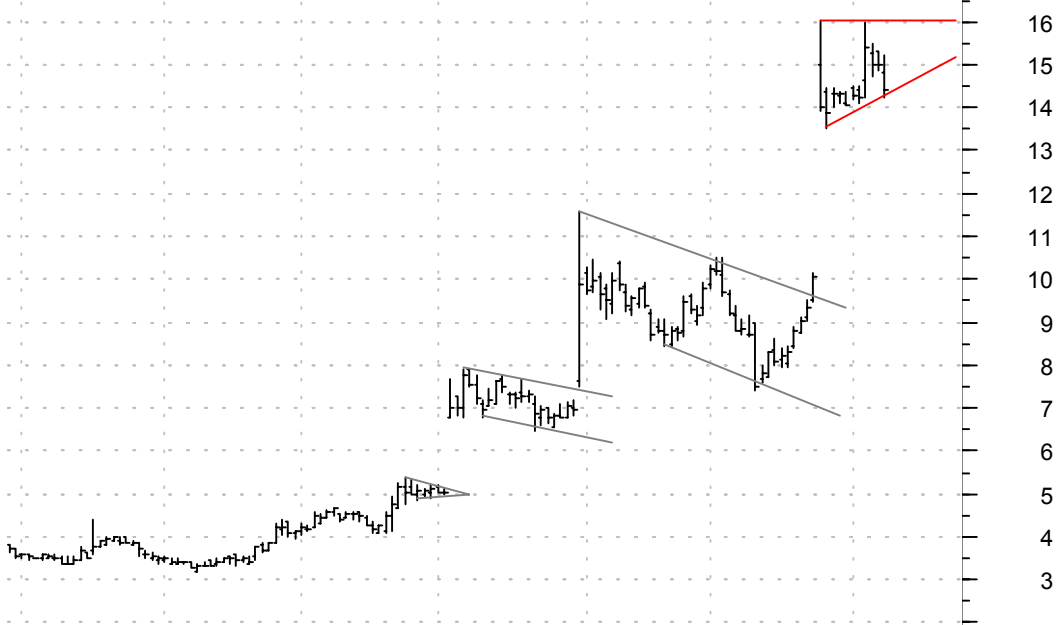
CAI symm. tri. / buy on upside brkout on increased volume

CACI Intl Inc CI (48.5500, 49.5900, 48.4200, 48.4600 -0.2400)



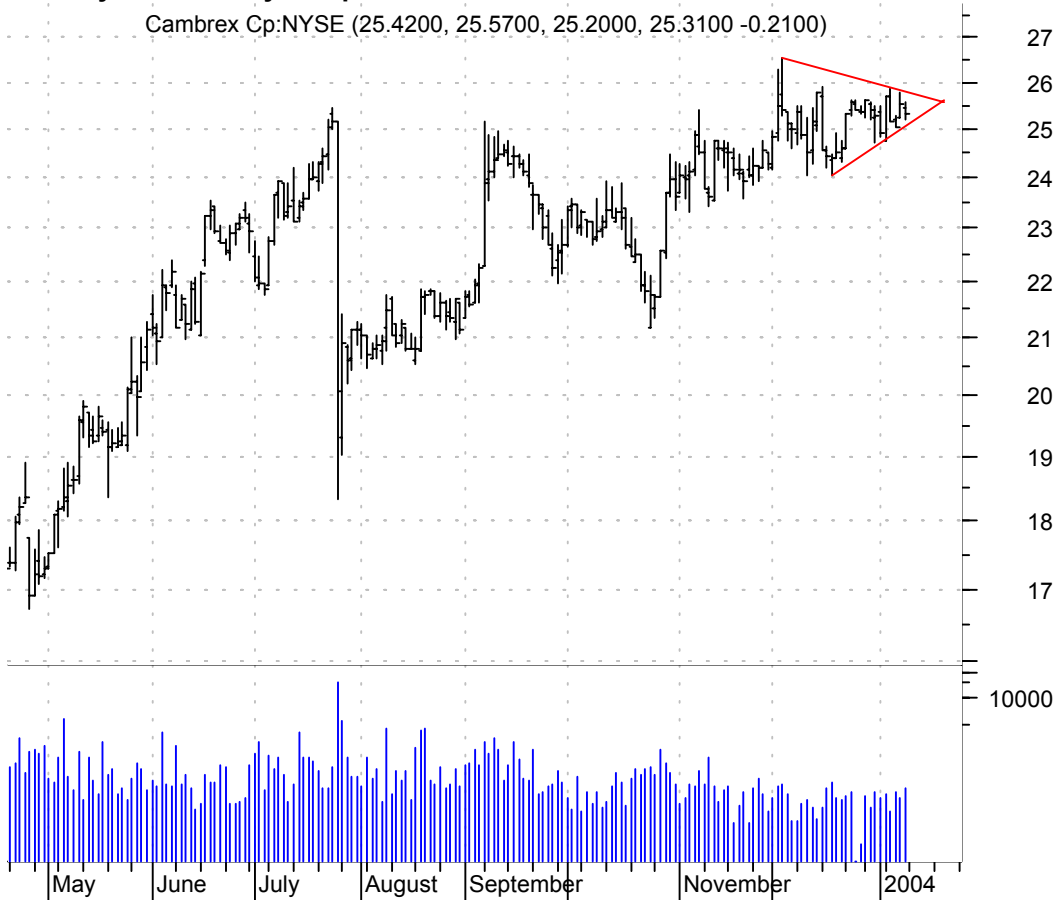
CAMP asc. tri. preceded by 'pole-like' move / buy on upside brkout on increased volume

Calif Amplifier (14.8100, 15.2000, 14.2500, 14.4200 -0.5700)



CBM symm. tri. / buy on upside brkout on increased volume

Cambrex Cp:NYSE (25.4200, 25.5700, 25.2000, 25.3100 -0.2100)



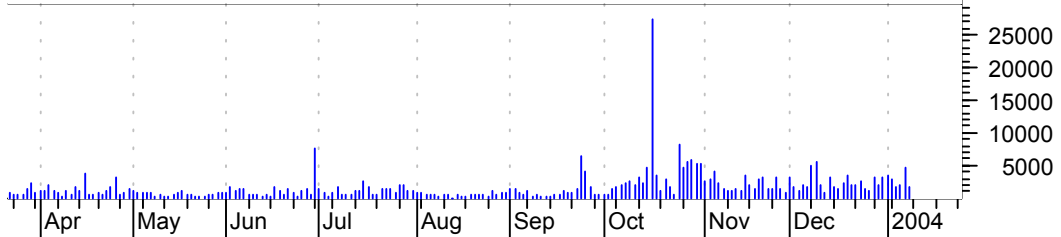
CKSW symm. tri. / buy on upside brkout on increased volume

Clicksoftware Te (4.1100, 4.2000, 3.9000, 4.0200 -0.1700)



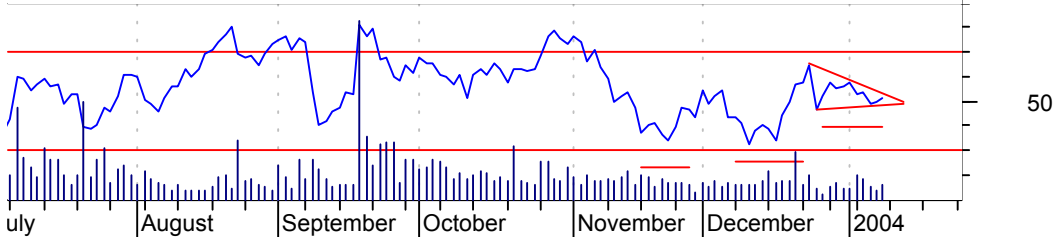
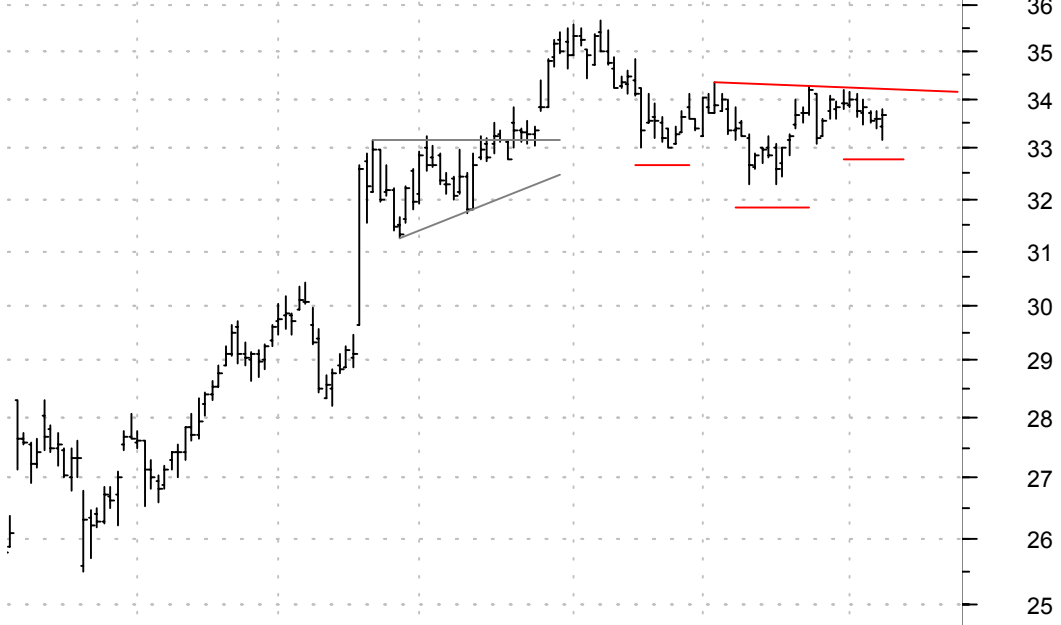
CLST sloppy asc. tri. / buy on upside breakout on increased volume

Cellstar Corp:OT (14.1000, 14.5500, 14.0000, 14.4500 +0.4800)



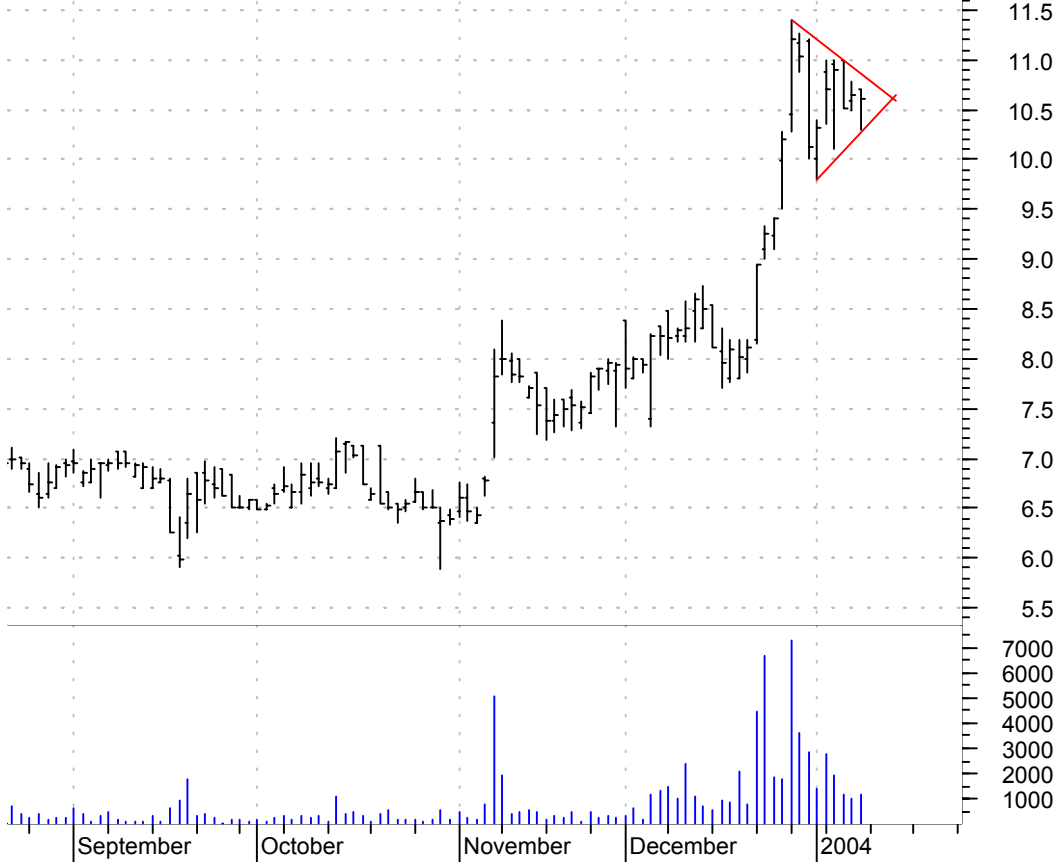
CNF inv. h. & sh. / buy on upside breakout on increased volume

CNF Inc:NYSE (33.4500, 33.7800, 33.1500, 33.6900 +0.1000)



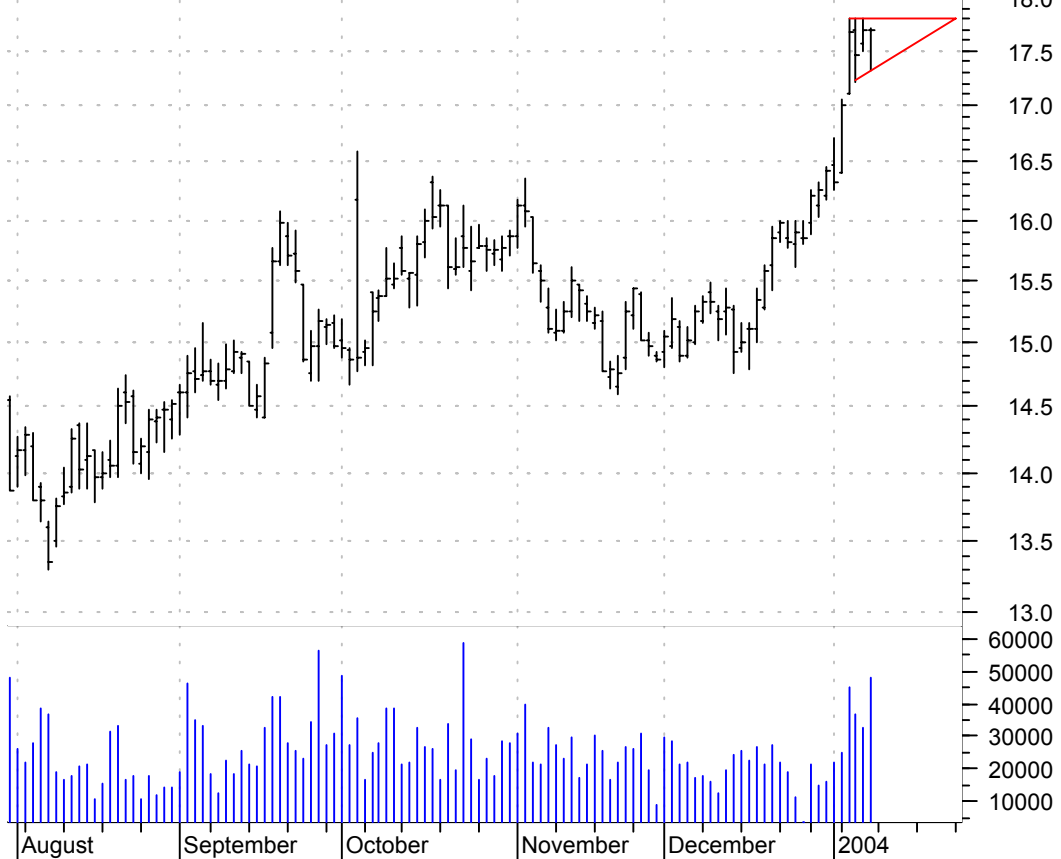
EPEX bull pennant / buy on upside brkout on increased volume

Edge Petroleum C (10.7000, 10.7100, 10.2900, 10.6000 -0.0500)



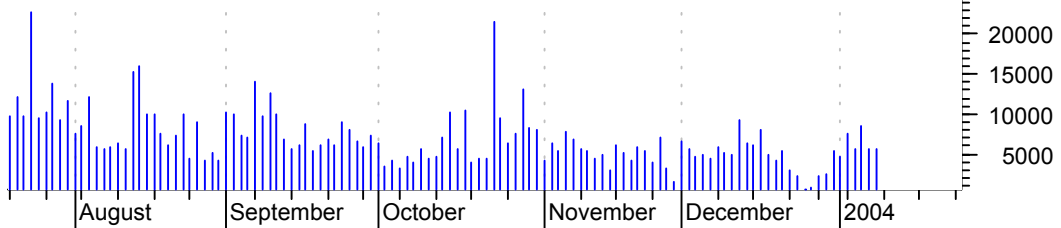
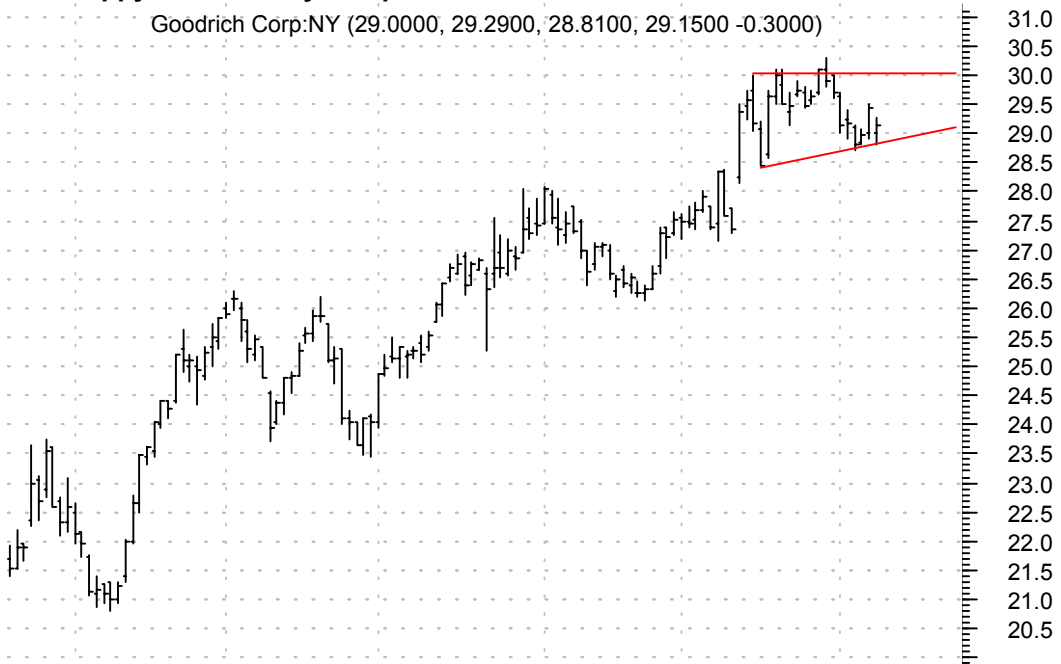
FON asc. tri. preceded by 'pole-like' move / buy on upside brkout on increased volume

Sprint Corp:NYSE (17.7000, 17.7100, 17.3200, 17.7000 +0.0000)



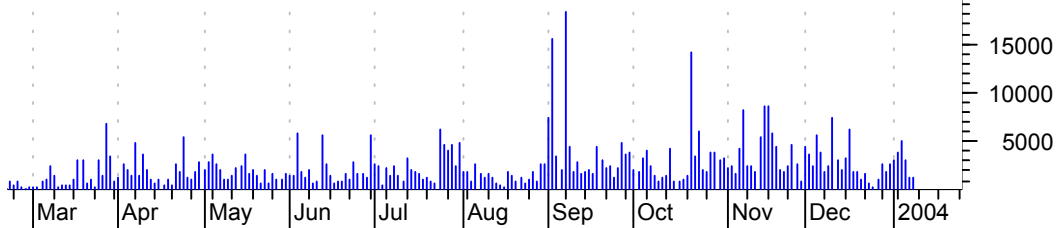
GR sloppy asc. tri. / buy on upside brkout on increased volume

Goodrich Corp:NY (29.0000, 29.2900, 28.8100, 29.1500 -0.3000)



GVHR symm. tri. / buy on upside brkout on increased volume

Gevity HR Inc:OT (21.9000, 22.3300, 21.4200, 21.7500 -0.5200)



JADE symm. tri. / buy on upside brkout on increased volume

LJ Intl Inc:OTC (4.4700, 4.5000, 4.3000, 4.5000 +0.0500)



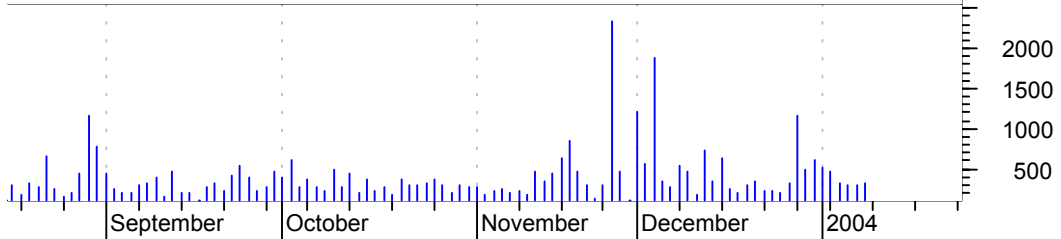
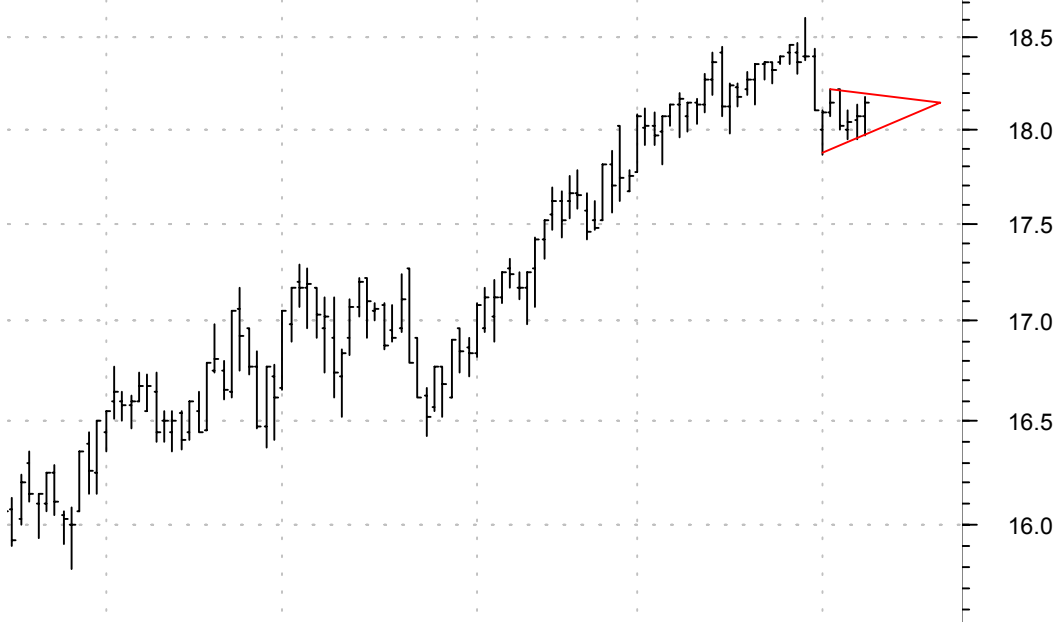
JOE bull flag / buy on upside brkout on increased volume

St Joe Co:NYSE (36.7000, 37.3000, 36.5600, 37.3000 +0.7800)



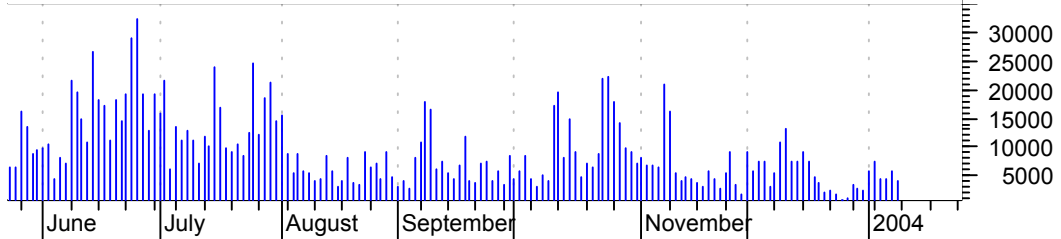
KRT bear pennant / sell on downside brkout on increased volume

Kramont Realty T (18.0700, 18.1800, 17.9700, 18.1500 +0.0800)



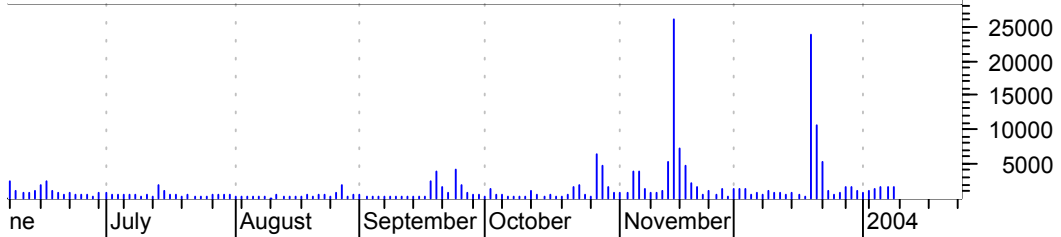
LEND symm. tri. brkout / buy on upside brkout thru dotted red on increased volume

ACCREDITED HOME (31.1000, 32.6800, 31.1000, 31.7200 +0.4900)



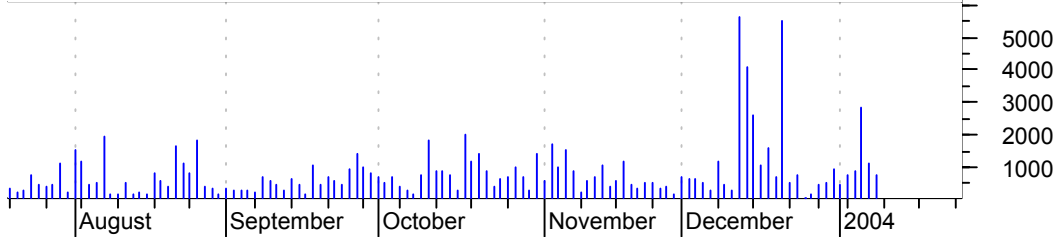
LSBC sloppy symm. tri. / buy on upside brkout on increased volume

LARGE SCALE BIOL (2.1400, 2.2200, 2.0700, 2.1100 +0.0100)



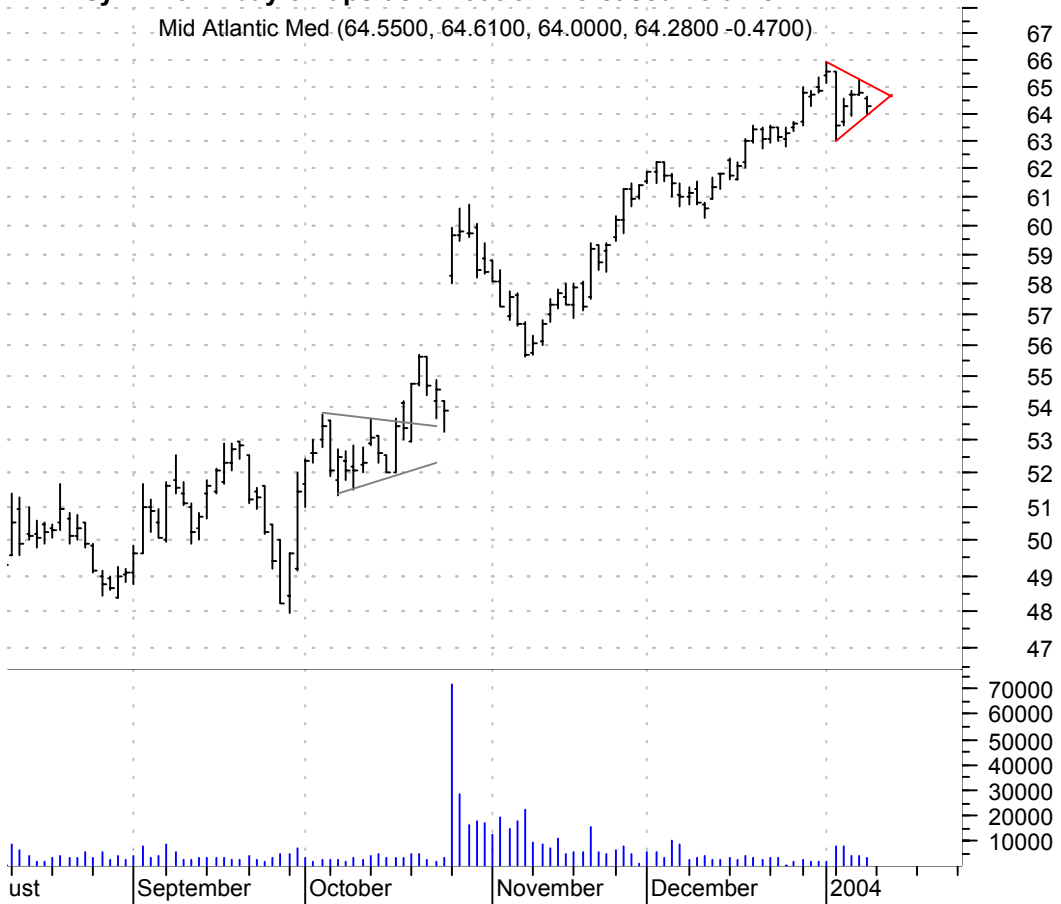
MAPX symm. tri. / buy on upside brkout thru dotted red line on increased volume

Mapics Inc:OTC (13.3000, 13.6500, 13.3000, 13.4600 -0.2400)



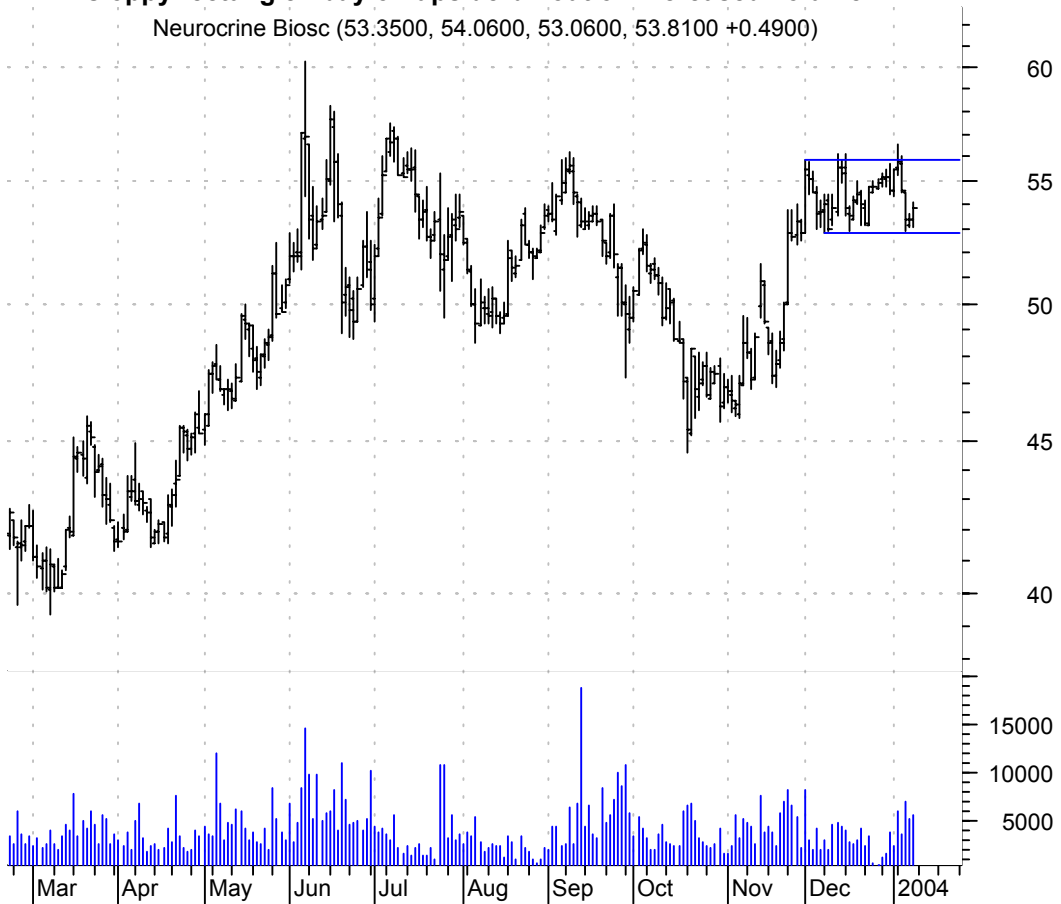
MME symm. tri. / buy on upside brkout on increased volume

Mid Atlantic Med (64.5500, 64.6100, 64.0000, 64.2800 -0.4700)



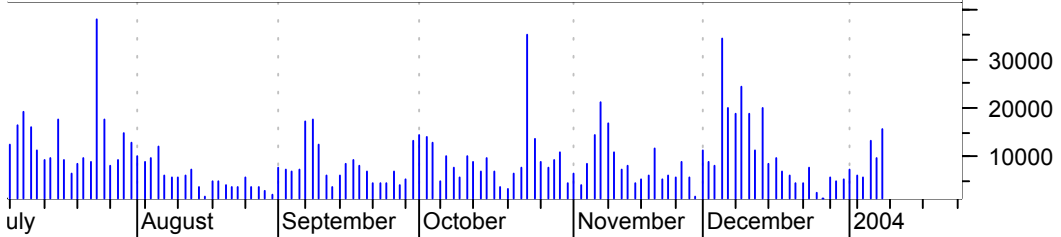
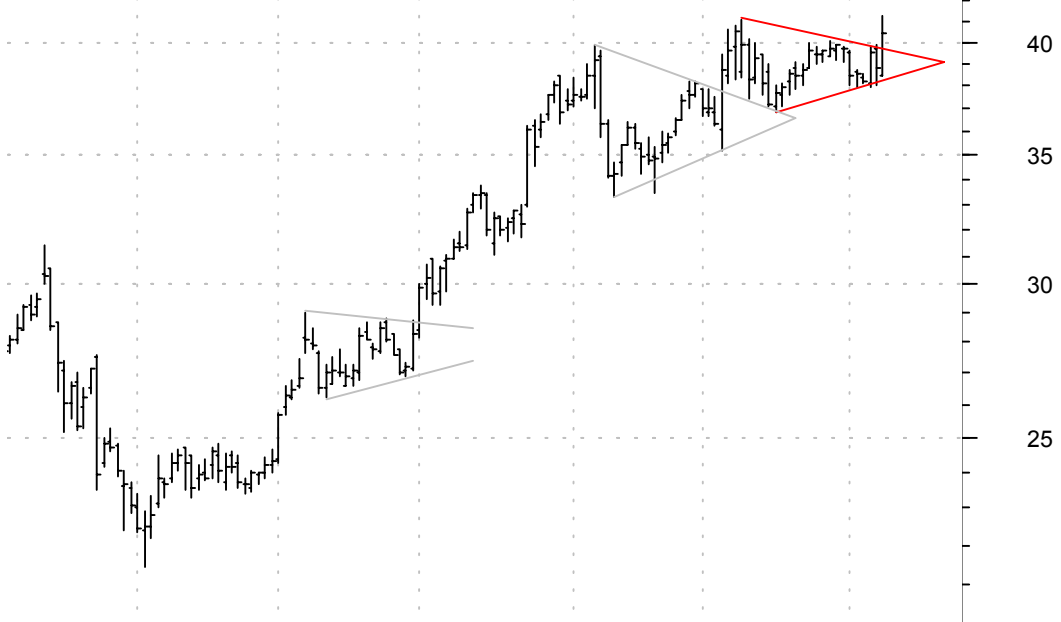
NBIX sloppy rectangle / buy on upside brkout on increased volume

Neurocrine Biosc (53.3500, 54.0600, 53.0600, 53.8100 +0.4900)



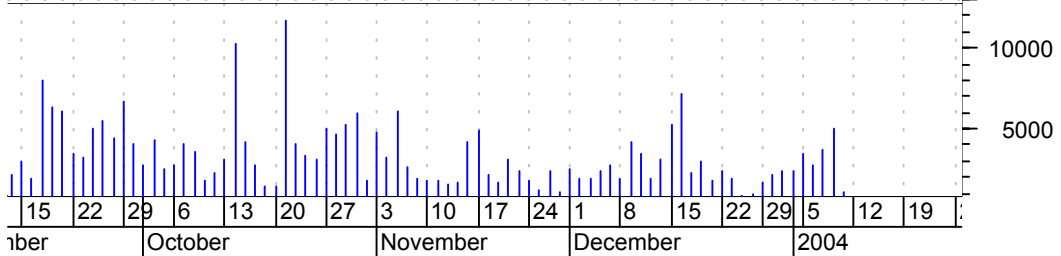
NCEN symm. tri. brkout / buy and use bottom of pattern (asc. tri.) as failure point

New Century Fina (38.4500, 41.2800, 38.4500, 40.4100 +1.6000)



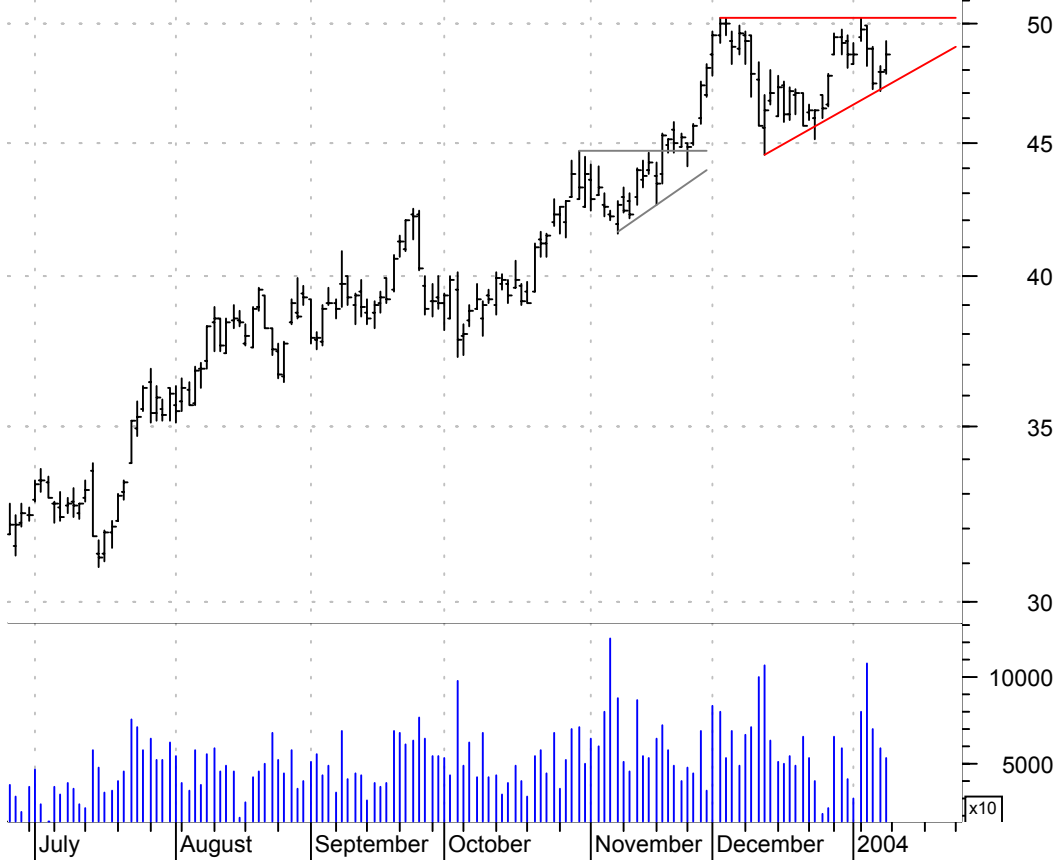
NCI sloppy asc. tri. / buy on upside brkout on increased volume

Navigant Consult (19.2000, 19.5900, 19.0100, 19.3500 +0.0000)



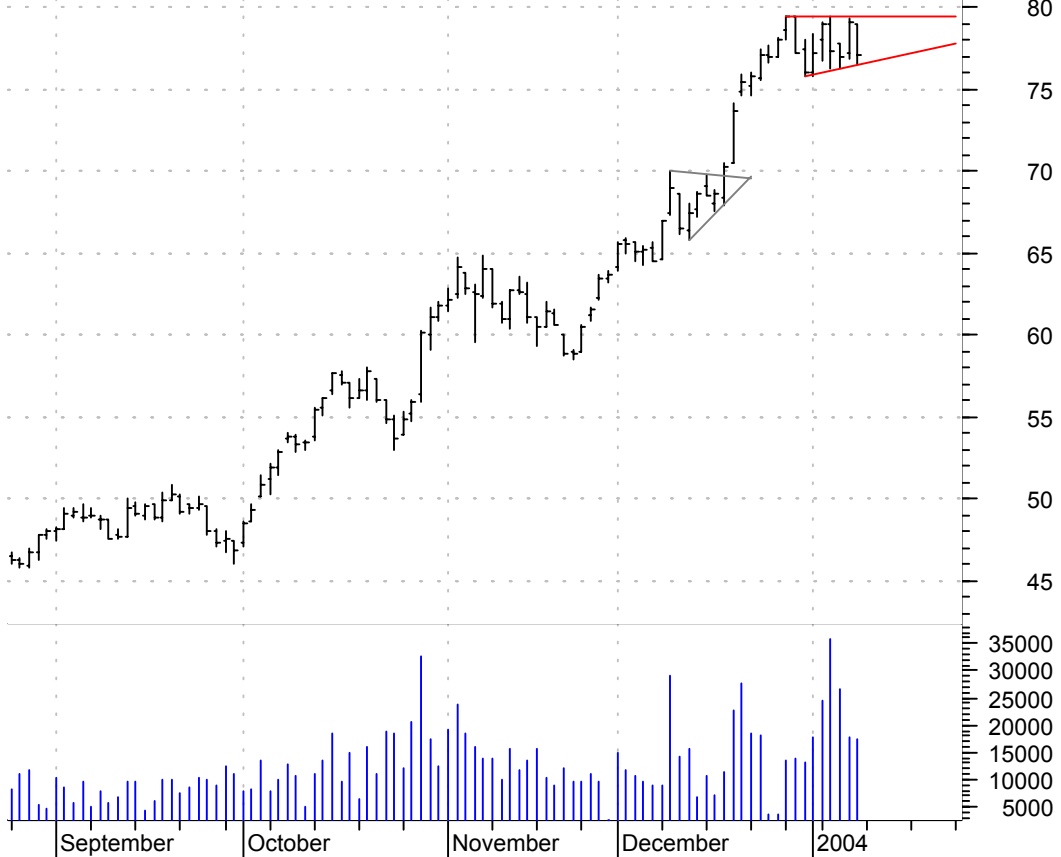
NEM asc. tri. / buy on upside breakout on increased volume

Newmont Mining C (47.9900, 49.2000, 47.7800, 48.6200 +0.7200)



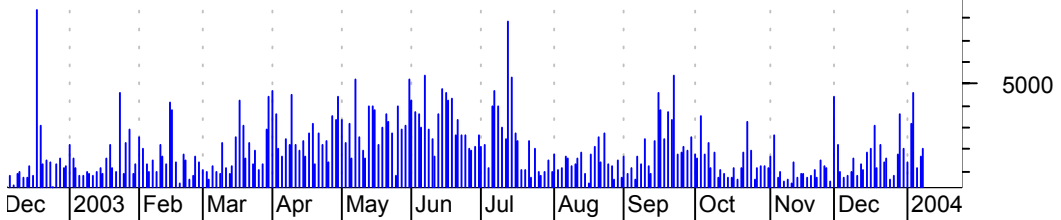
PD asc. tri. / buy on upside breakout on increased volume

Phelps Dodge Cor (79.0000, 79.0000, 76.5600, 77.0700 -2.0800)



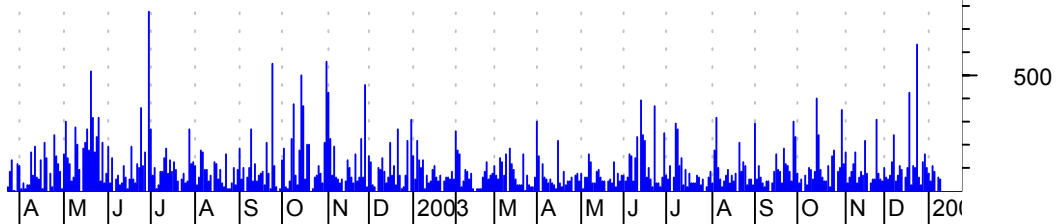
PRGS asc. tri. / buy on upside breakout on increased volume

Progress Softwar (23.3500, 23.3500, 21.9600, 22.6000 -0.5500)



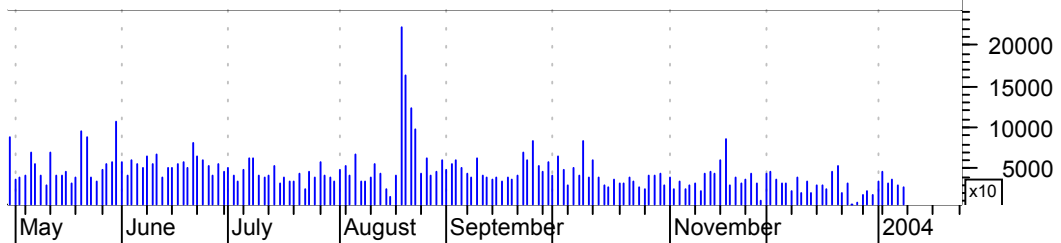
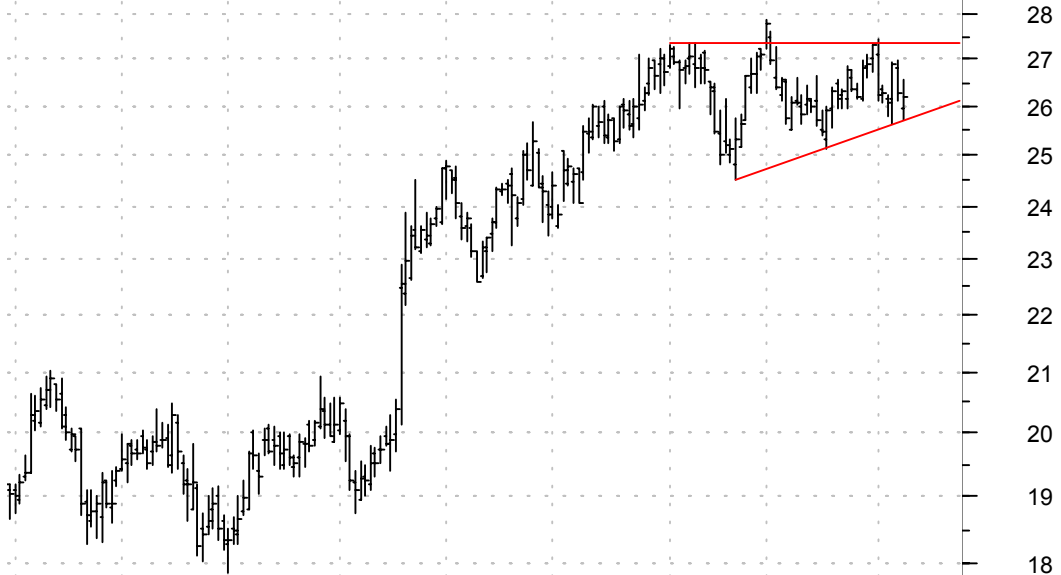
RVFD symm. tri. / buy on upside breakout on increased volume

Riviana Foods:OT (27.4600, 28.0700, 27.4600, 27.7700 +0.1400)



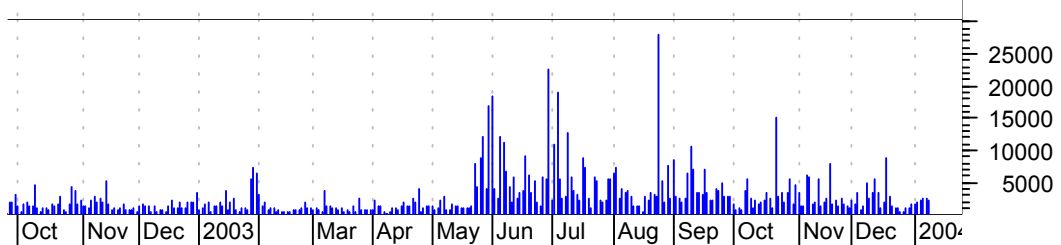
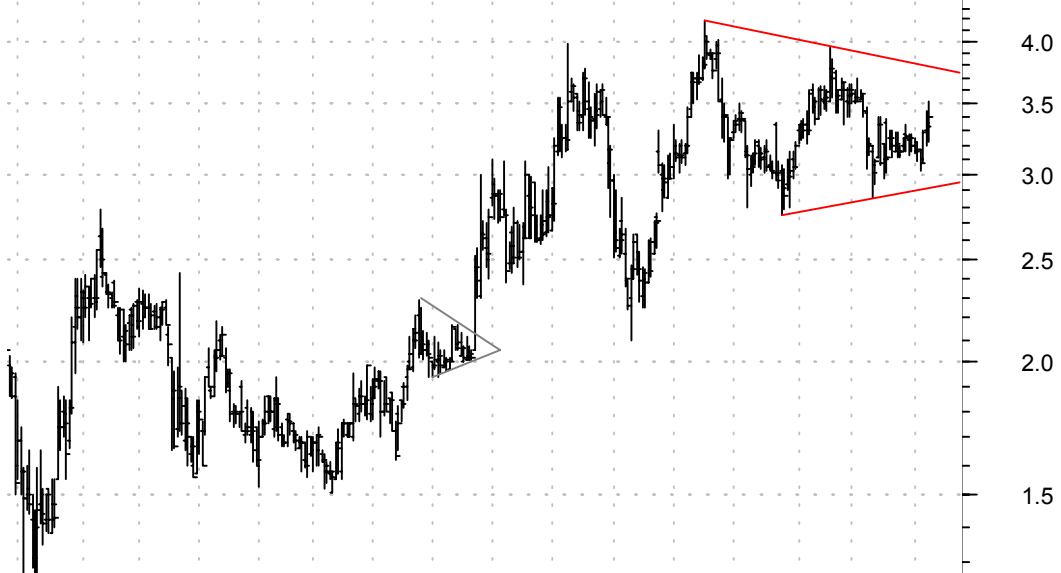
SPLS sloppy asc. tri. / buy on upside brkout on increased volume

Staples Inc:OTC (25.9500, 26.5800, 25.7000, 26.1900 -0.0800)



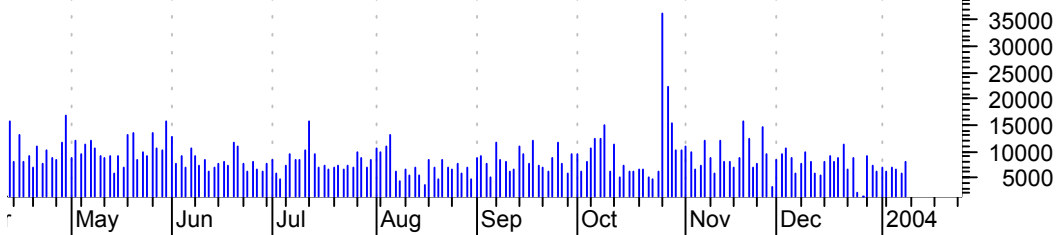
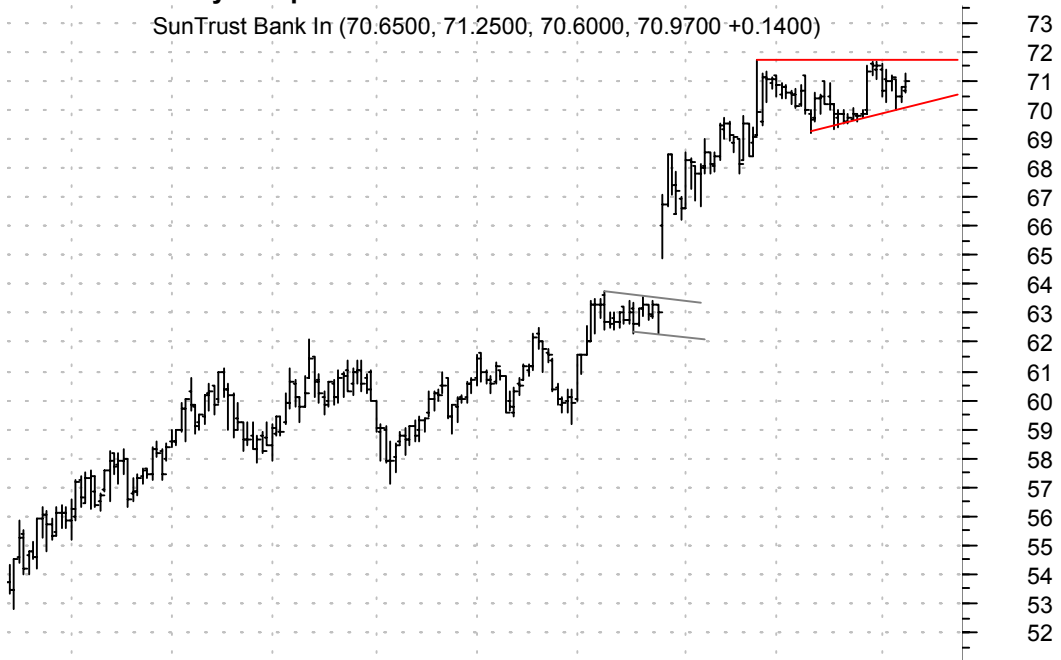
SQNM symm. tri. / buy on upside brkout on increased volume

Sequenom Inc:OTC (3.3600, 3.5200, 3.2200, 3.4000 +0.0700)



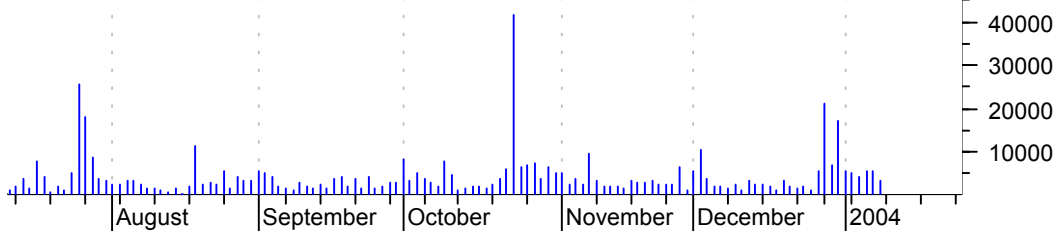
STI asc. tri. / buy on upside brkout on increased volume

SunTrust Bank In (70.6500, 71.2500, 70.6000, 70.9700 +0.1400)

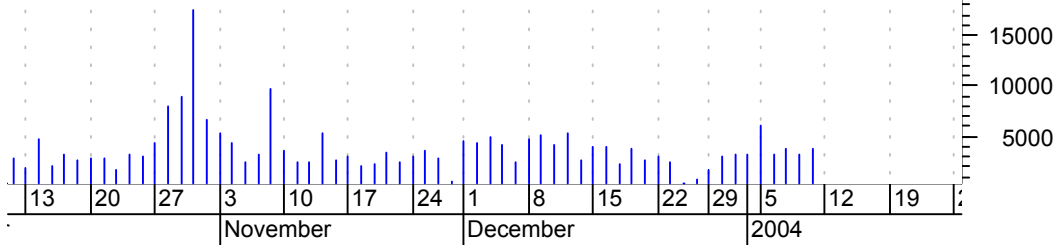


THER bull pennant / buy on upside brkout on increased volume

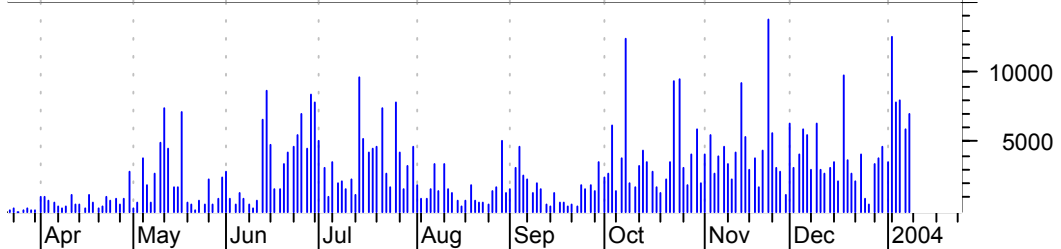
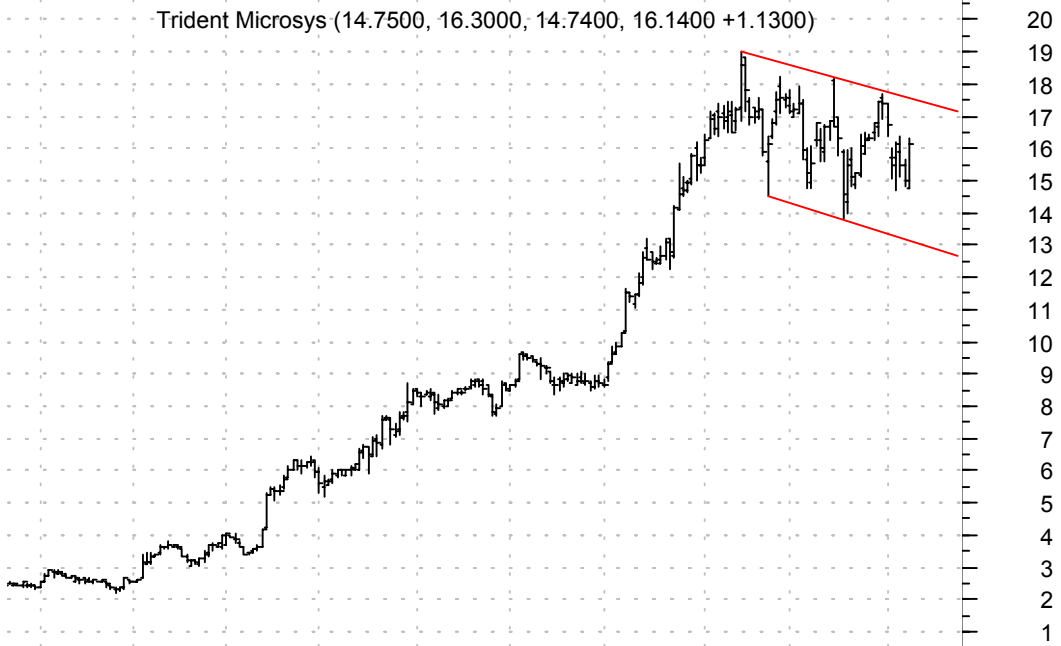
Therasense Inc:O (20.6600, 20.8500, 20.0700, 20.2300 -0.5600)



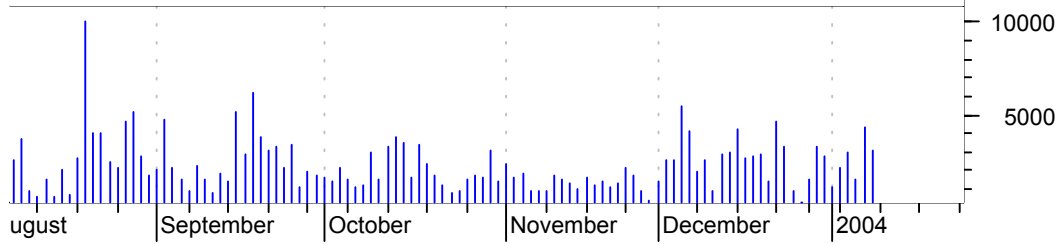
TIN symm. tri. (better seen on intra-day chart) / buy on upside brkout on increased volume



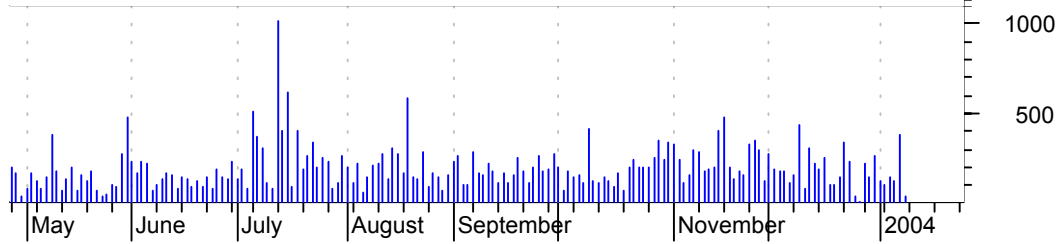
TRID bullish flagging / buy on upside brkout on increased volume



TYL asc. tri. / buy on upside brkout on increased volume



UCBI symm. tri. / buy on upside brkout on increased volume



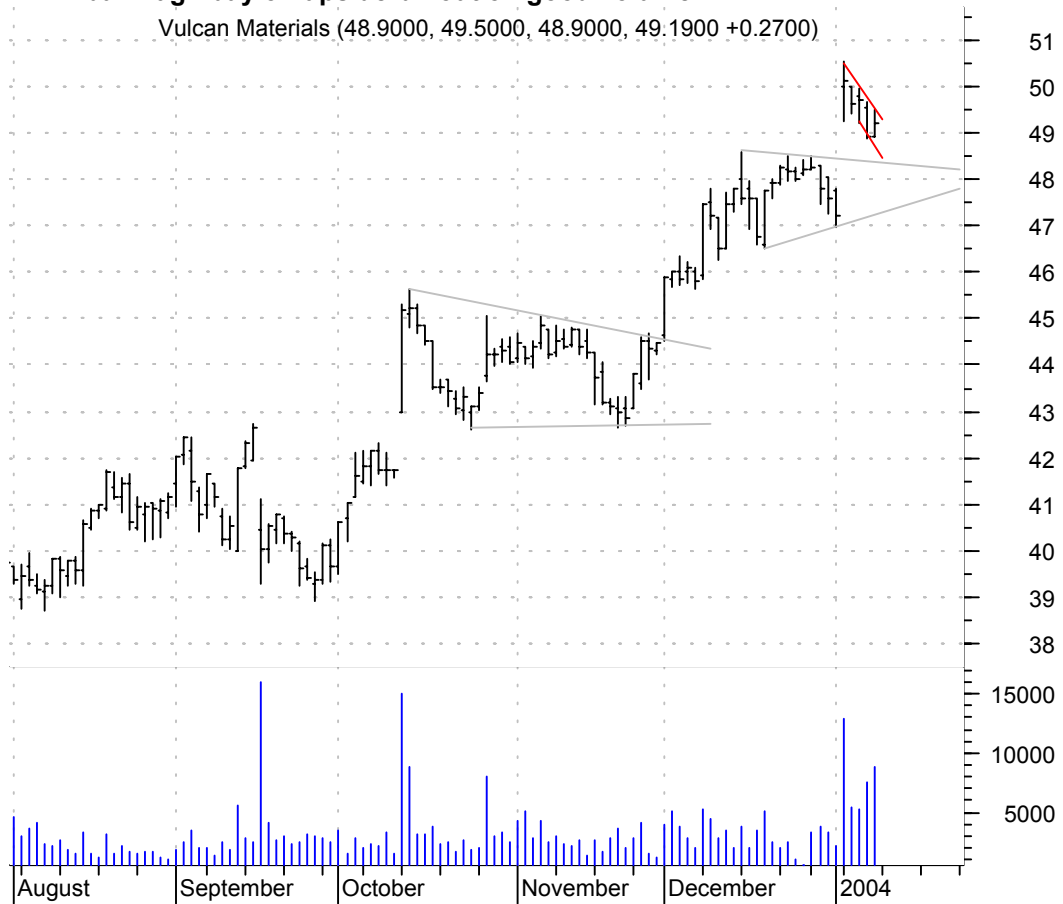
VAR symm. tri. / buy on upside brkout on increased volume

Varian Medical S (69.3300, 70.0900, 69.0100, 69.8600 +0.5800)



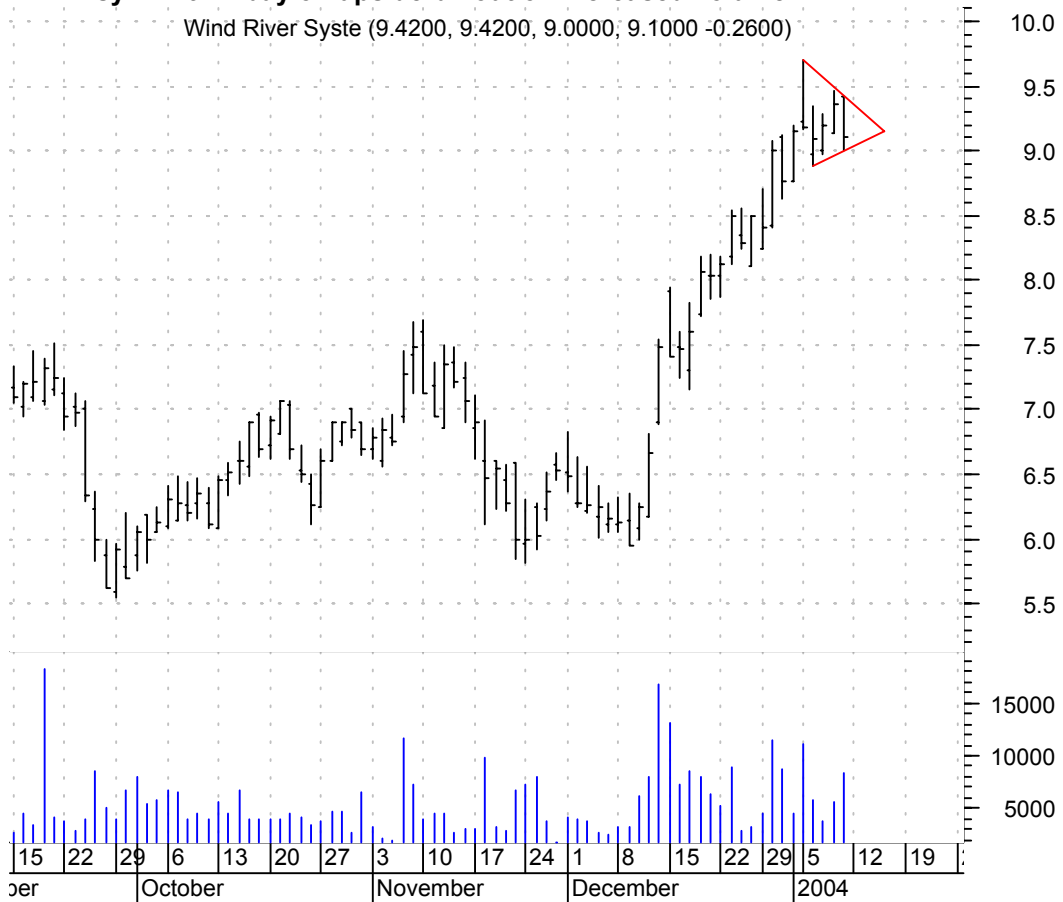
VMC bull flag / buy on upside brkout on good volume

Vulcan Materials (48.9000, 49.5000, 48.9000, 49.1900 +0.2700)



WIND symm. tri. / buy on upside brkout on increased volume

Wind River Syste (9.4200, 9.4200, 9.0000, 9.1000 -0.2600)



WMGI symm. tri. brkout & retracement / buy on upside brkout thru dotted red line on increased volume

WRIGHT MEDICAL G (29.6800, 29.8500, 29.2400, 29.3100 -0.4800)



WRLD asc. tri. preceded by 'pole-like' move / buy on upside brkout on increased volume



chartpatterns.com
Chart Pattern Analysis for Timing the Markets

KMatras@aol.com