

ACI asc. tri. brkout / buy on any upside follow-thru (above close of Fri.)

Arch Coal Inc:NY (32.4400, 33.5500, 32.2000, 33.0600 +0.9600)



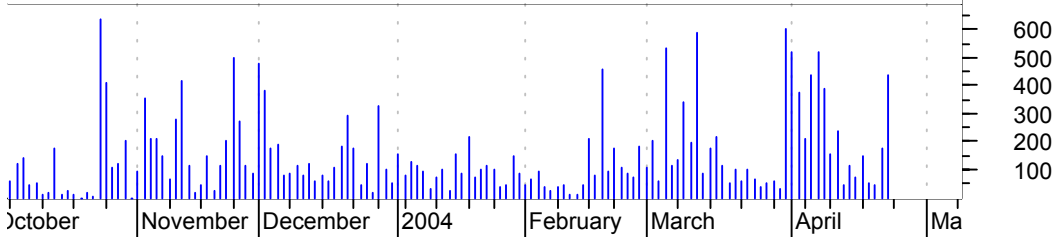
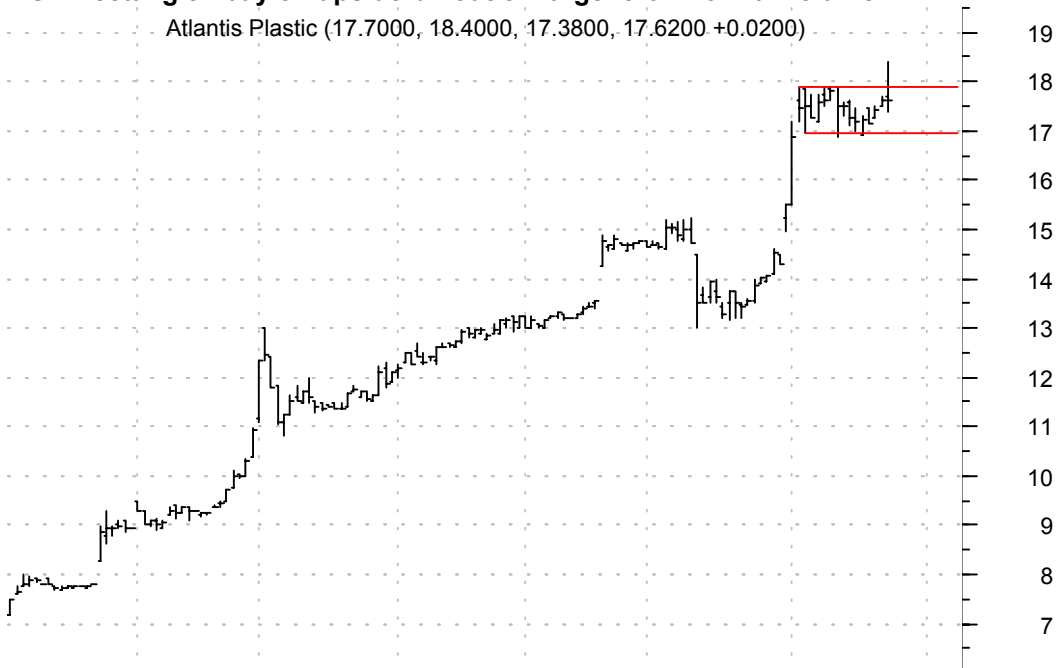
ACXM bull flag / buy on upside brkout thru dotted red line on increase volume

Acxiom Cp:OTC (24.0700, 24.2500, 23.9600, 24.1700 +0.0700)



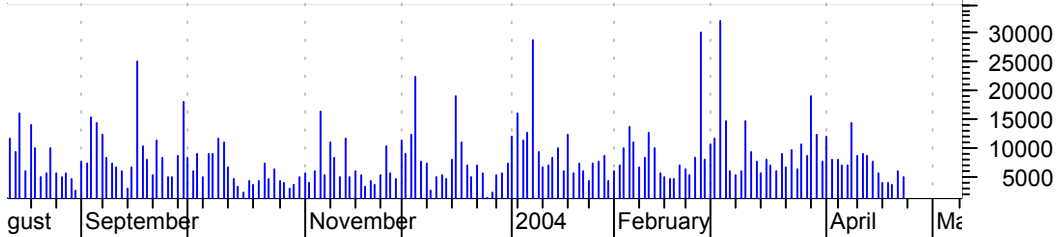
AGH rectangle / buy on upside breakout on larger than normal volume

Atlantis Plastic (17.7000, 18.4000, 17.3800, 17.6200 +0.0200)



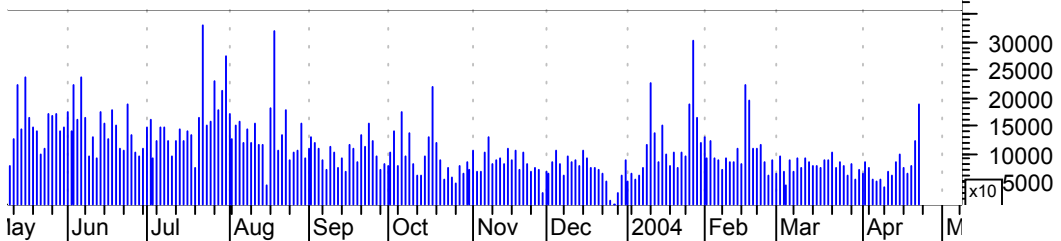
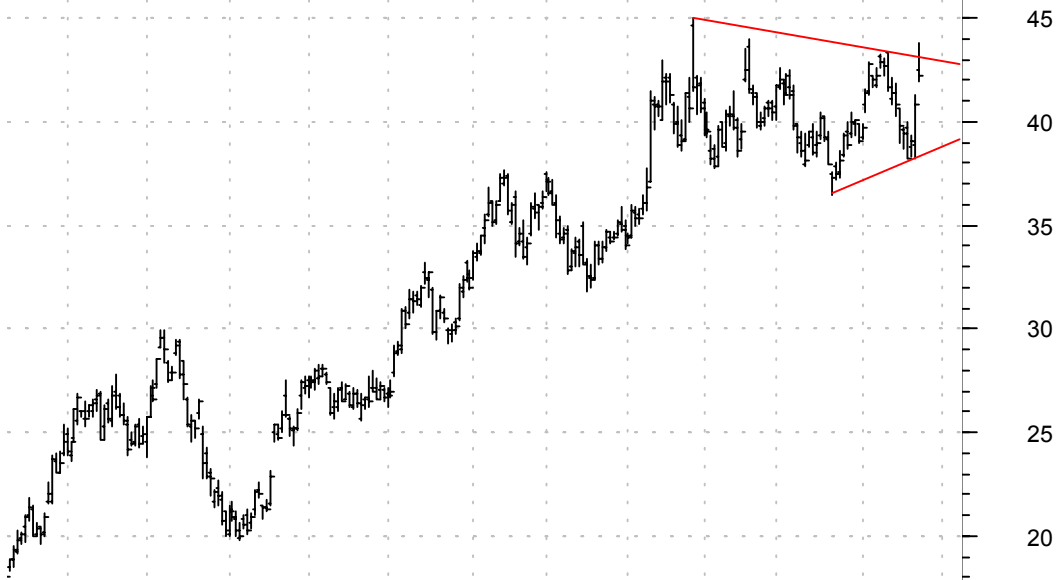
ANN desc. tri. / sell on downside breakout on increased volume

Ann Taylor Inc:N (42.0200, 42.0900, 41.4000, 42.0000 -0.2300)



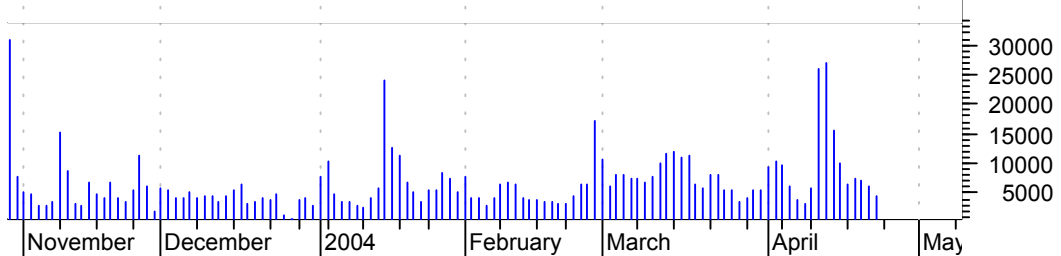
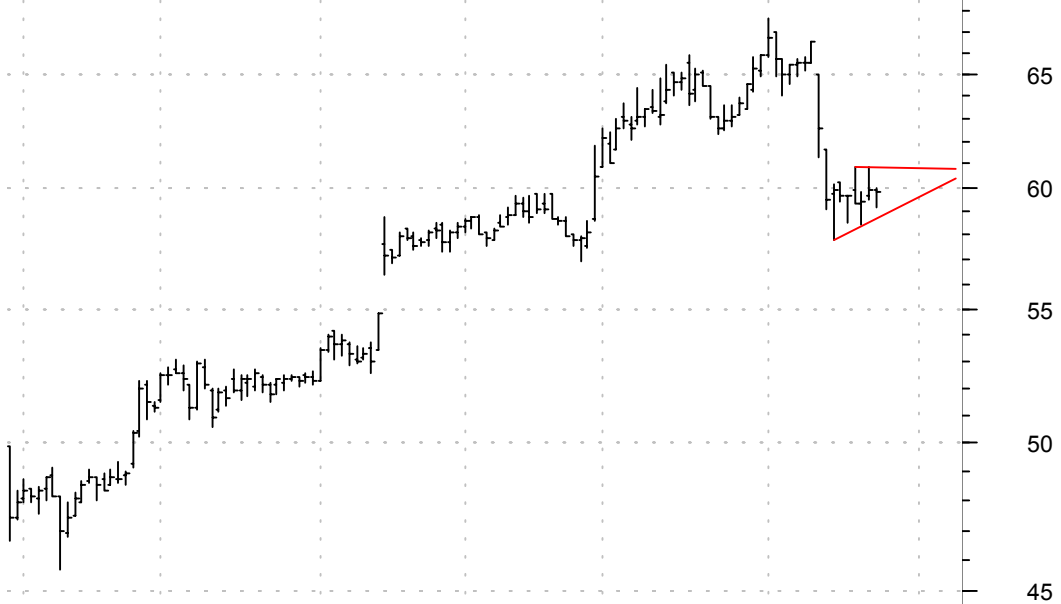
BRCM symm. tri. / buy on upside breakout on larger than normal volume

Broadcom Corp CI (42.5300, 43.7900, 41.9600, 42.2100 +1.4100)



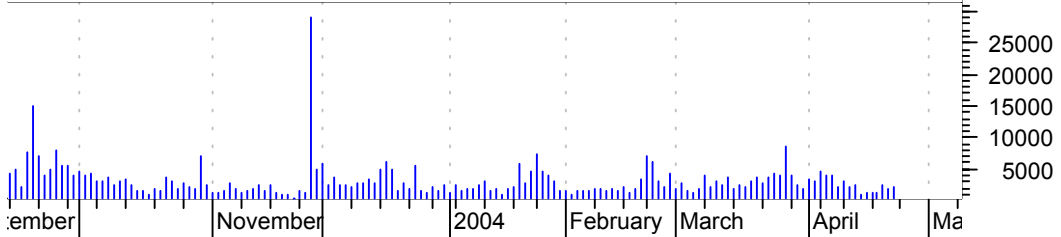
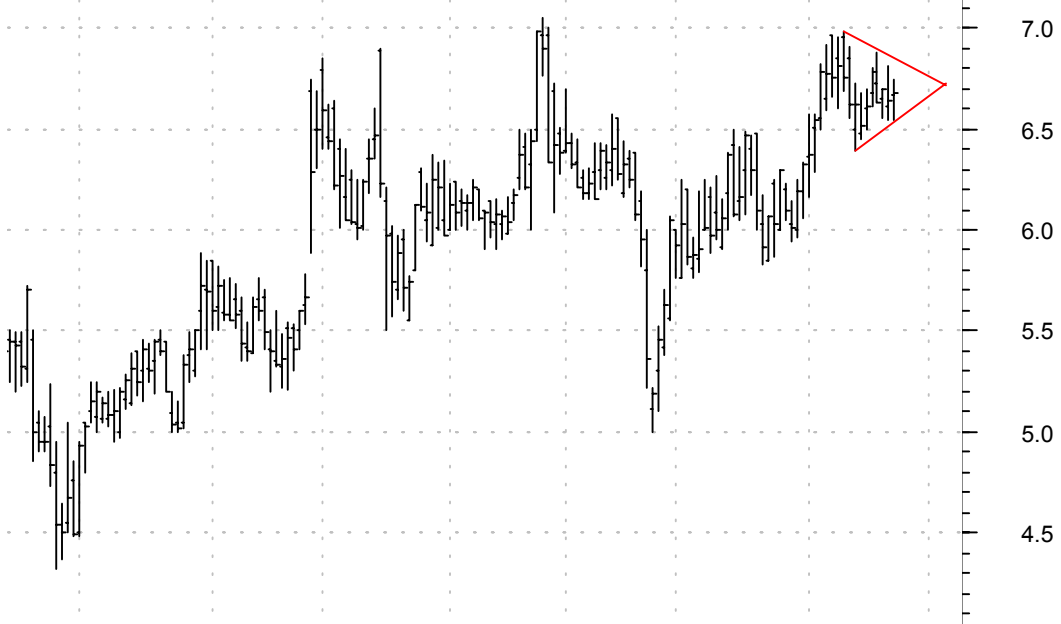
CBH slight symm. tri. preceded by 'pole-like' move / sell on downside breakout on increased

Commerce Bancorp (59.8800, 59.9400, 59.1300, 59.8000 -0.0800)



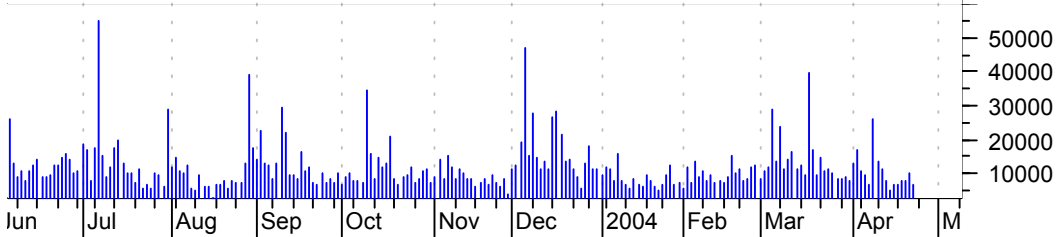
CDIC symm. tri. / buy on upside breakout on increased volume

Cardiodynamics I (6.6700, 6.7400, 6.5400, 6.6800 +0.0400)



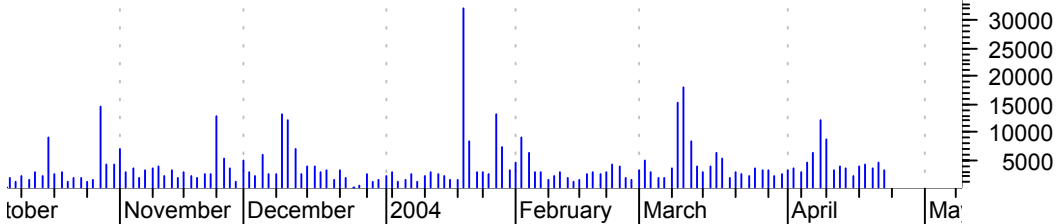
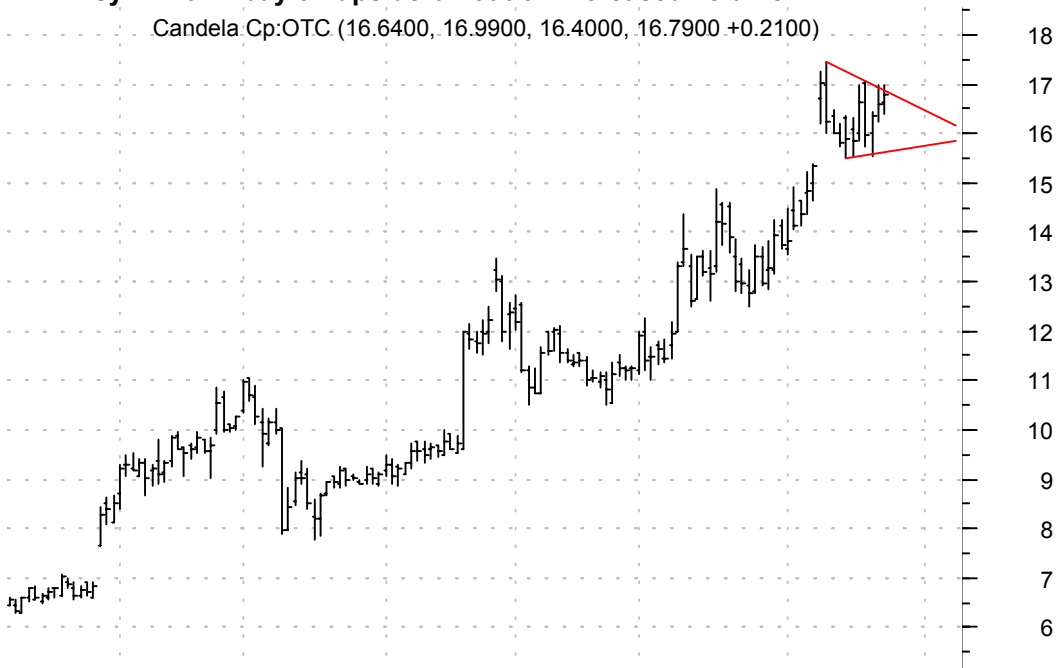
CHS symm. tri. / buy on upside breakout on increased volume

Chicos Fas Inc:N (44.7500, 44.7500, 43.9500, 44.3500 -0.3100)



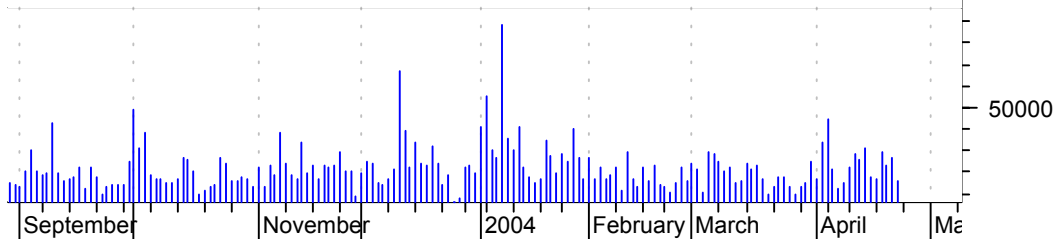
CLZR symm. tri. / buy on upside brkout on increased volume

Candela Cp:OTC (16.6400, 16.9900, 16.4000, 16.7900 +0.2100)



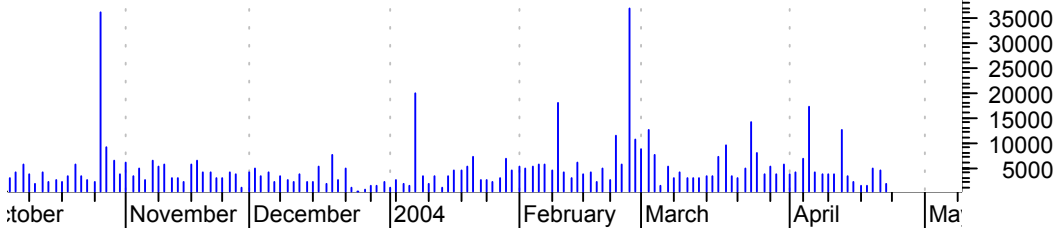
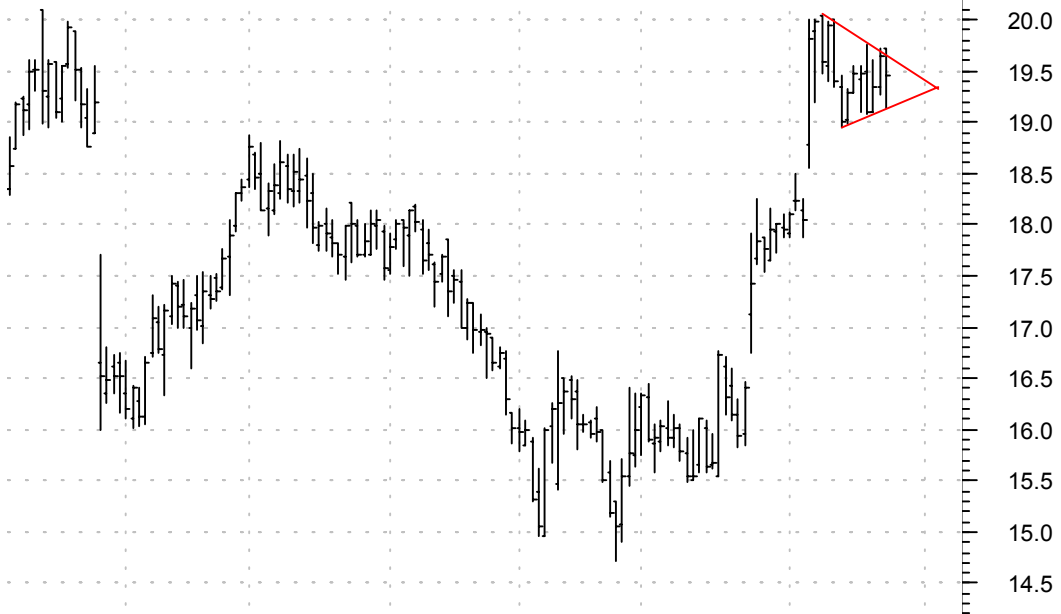
DHI symm. tri. preceded by 'pole-like' move / sell on downside brkout on increased volume

Horton DR Inc:NY (31.6000, 31.6000, 30.6500, 30.6700 -1.0100)



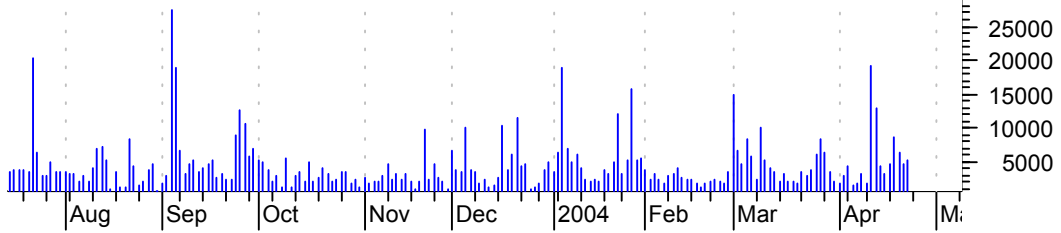
EAGL bullish pennant / buy on upside brkout on increased volume

EGL Inc:OTC (19.7200, 19.7200, 19.1400, 19.4500 -0.1900)



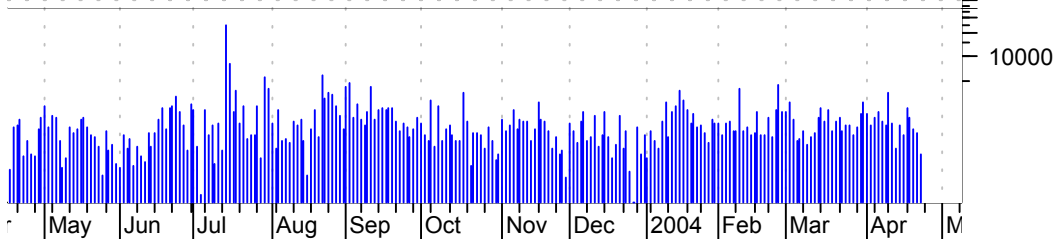
FINL symm. tri. / buy on upside brkout on increased volume

Finish Line Inc: (37.1600, 37.5200, 36.2300, 36.5400 -0.6000)



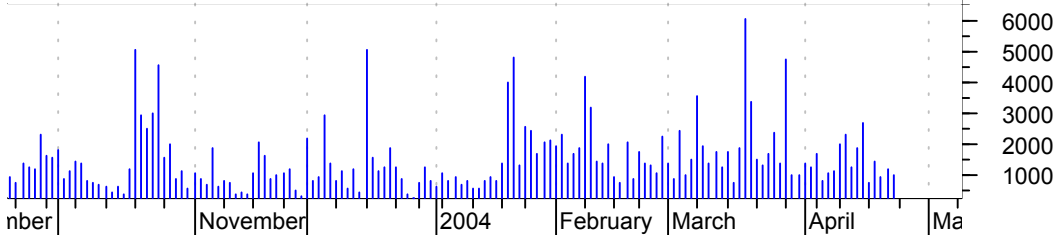
GFF symm. tri. / buy on upside brkout on increased volume

Griffon Corp:NYS (22.4200, 22.4200, 21.6300, 21.9900 -0.2300)



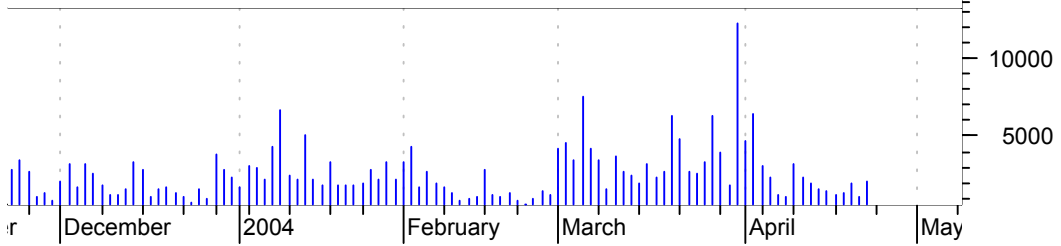
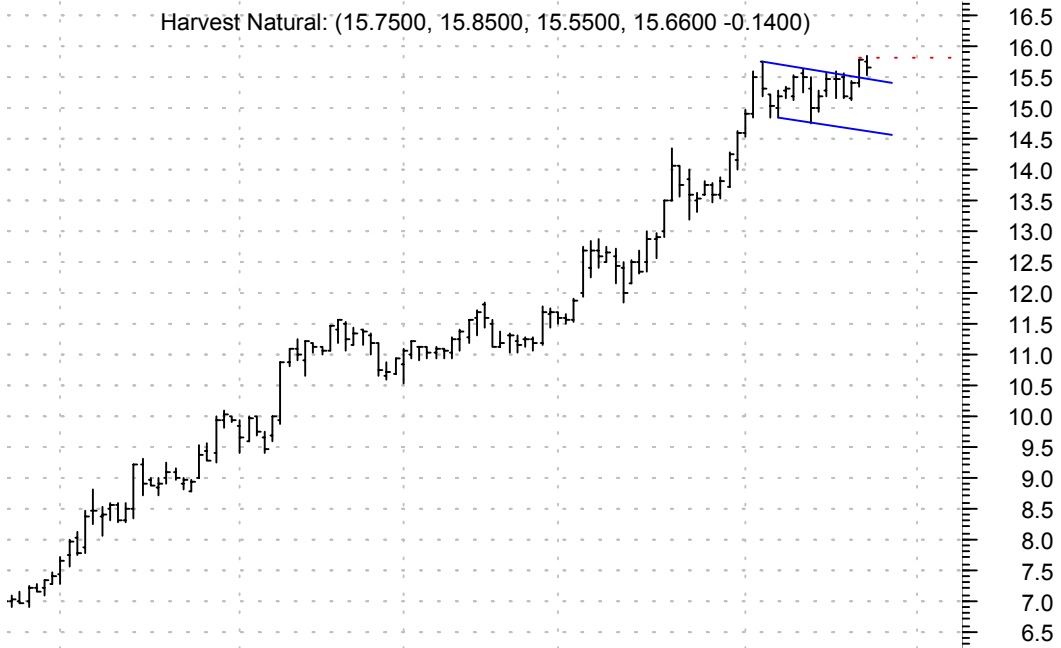
HAE rising wedge / sell on downside brkout on increased volume

Haemonetics Corp (29.8000, 29.9600, 29.2200, 29.6900 -0.0400)



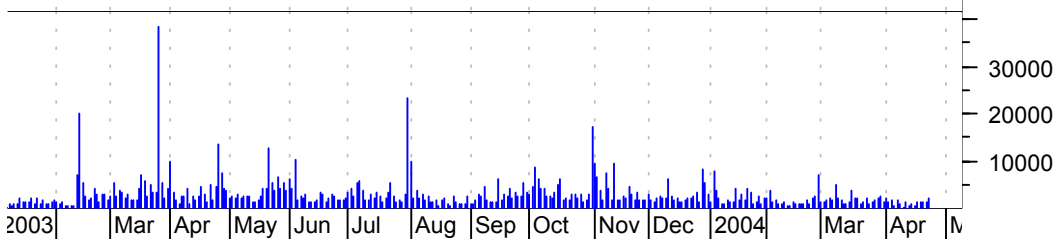
HNR bullish flag / buy on upside follow-thru (dotted red line) on increased volume

Harvest Natural: (15.7500, 15.8500, 15.5500, 15.6600 -0.1400)



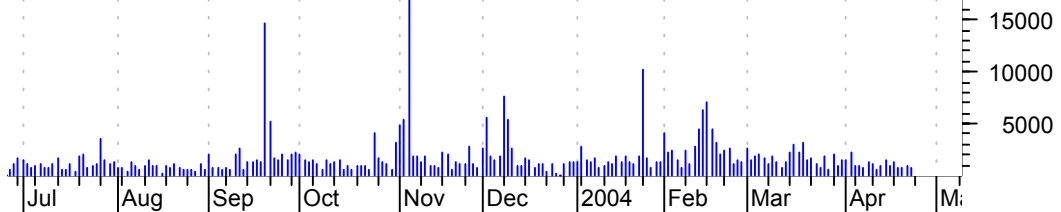
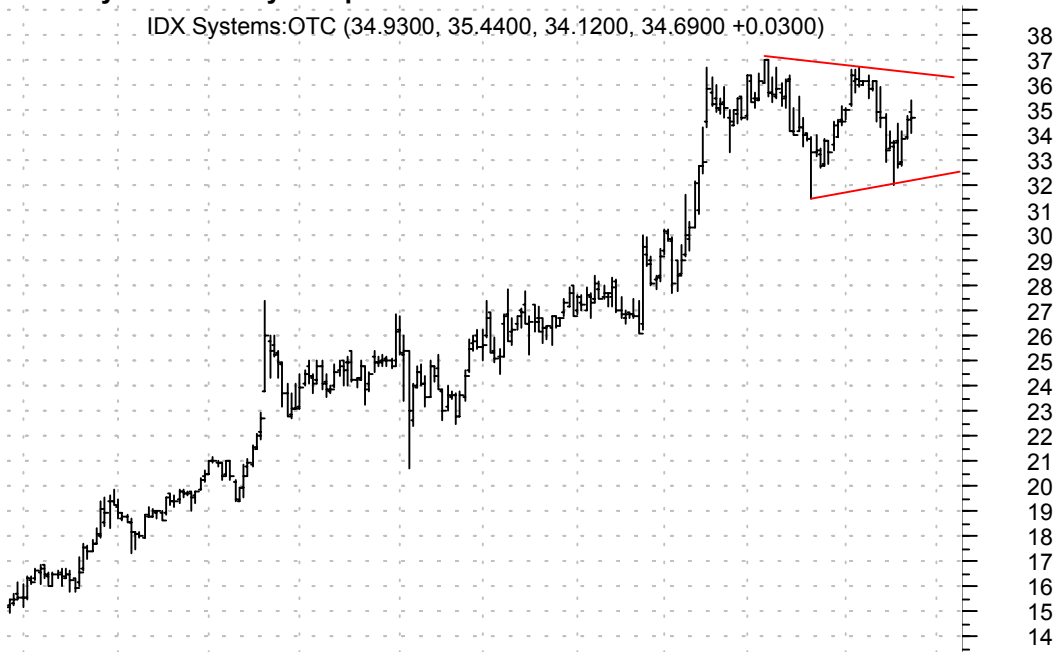
IART symm. tri. / buy on upside brkout on increased volume

Integra Lifescie (32.1500, 32.9500, 31.3800, 32.7100 +0.6200)



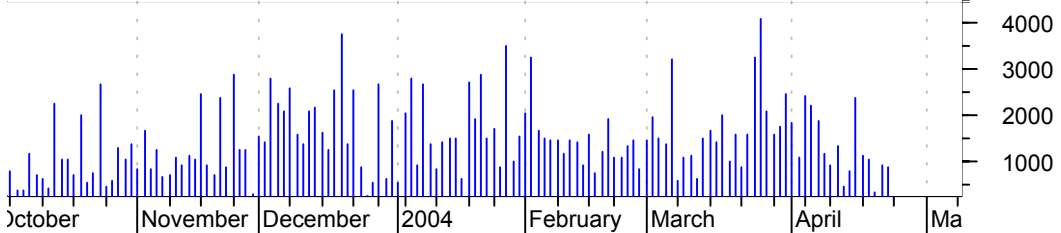
IDXC symm. tri. / buy on upside brkout on increased volume

IDX Systems:OTC (34.9300, 35.4400, 34.1200, 34.6900 +0.0300)



IES asc. tri. / buy on upside brkout on increased volume

Integrated Elect (11.3800, 11.4800, 11.2100, 11.3600 -0.0200)



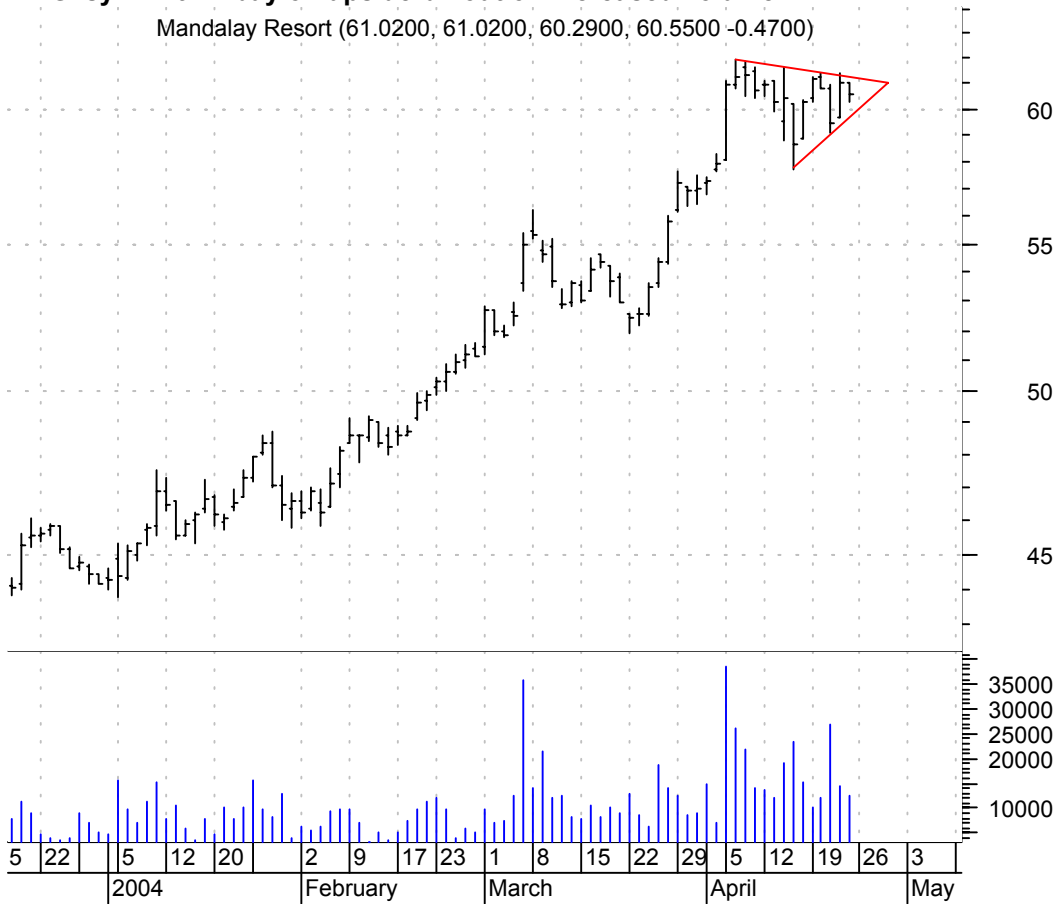
INGR falling wedge preceded by 'pole-like' move / buy on upside brkout on increased volume

Intergraph Corp: (24.5500, 24.9000, 24.1800, 24.4500 +0.0400)



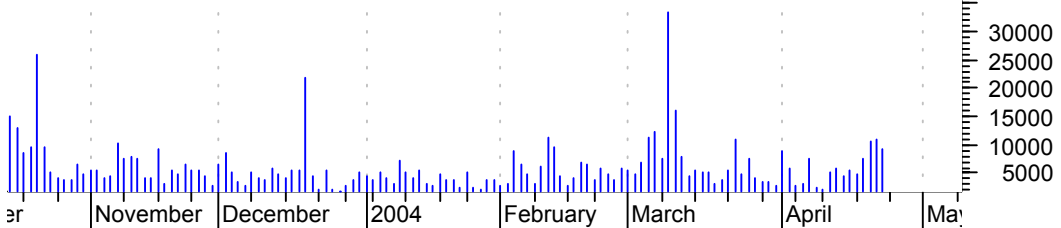
MBG symm. tri. / buy on upside brkout on increased volume

Mandalay Resort (61.0200, 61.0200, 60.2900, 60.5500 -0.4700)



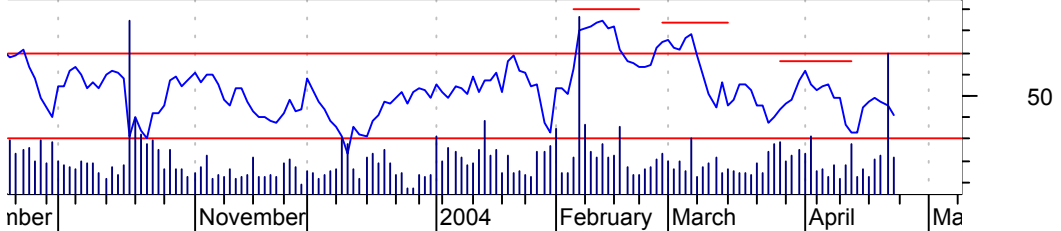
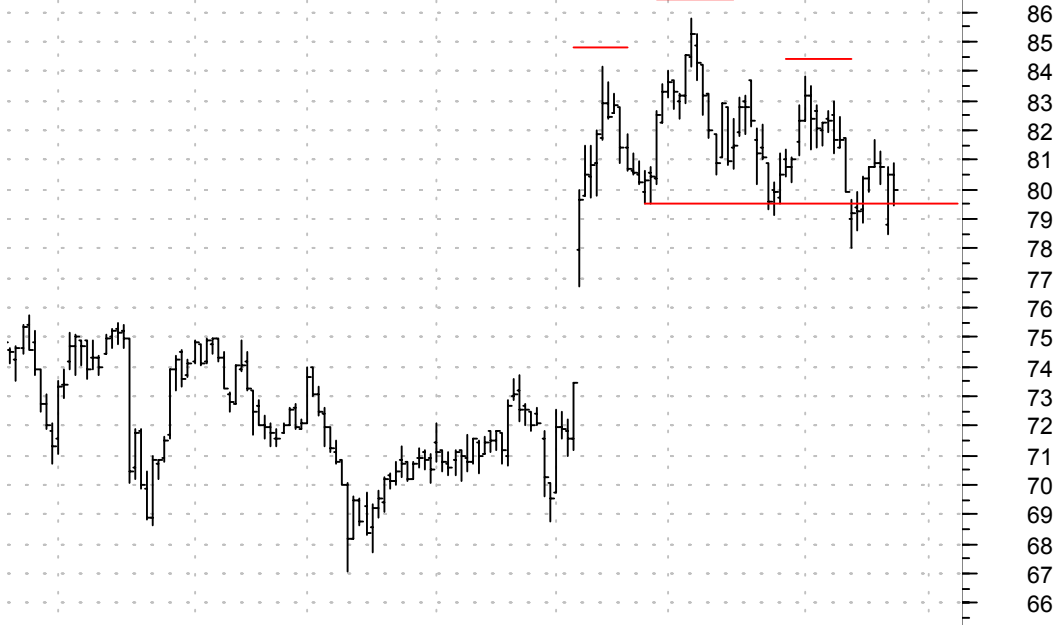
MDCO symm. tri. / buy on upside brkout on increased volume

MEDICINES CO (TH (34.3500, 34.8400, 33.6900, 34.2400 +0.0800)



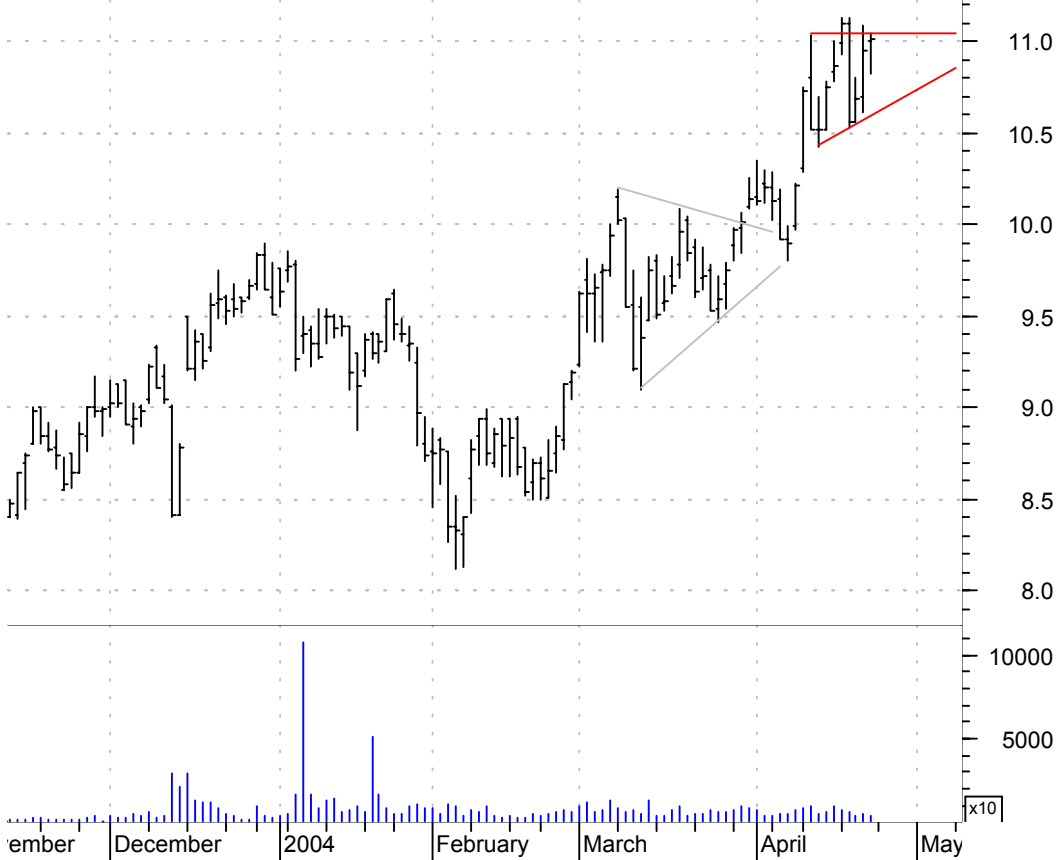
MHK h. & sh. / sell on downside brkout on increased volume

Mohawk Industrie (80.5200, 80.9200, 79.4500, 79.9600 -0.5600)



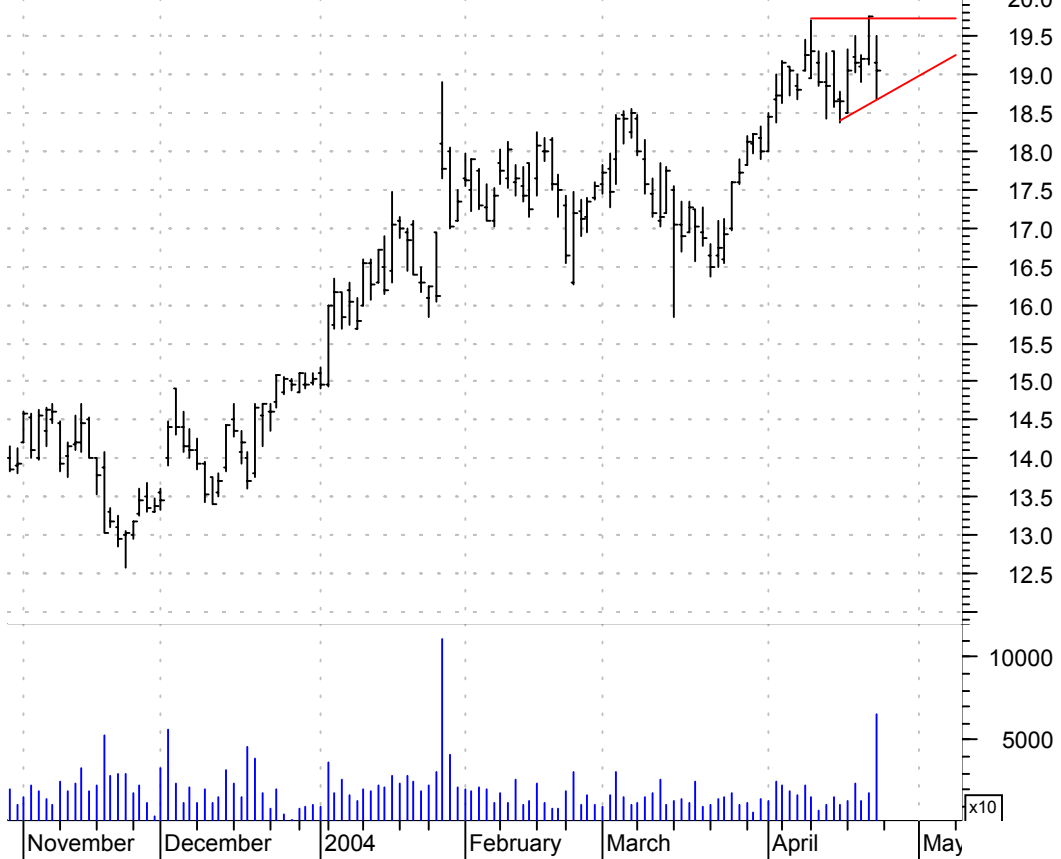
MHR asc. tri. / buy on upside brkout on increased volume

Magnum Hunter Re (11.0000, 11.0500, 10.8200, 11.0100 +0.0600)



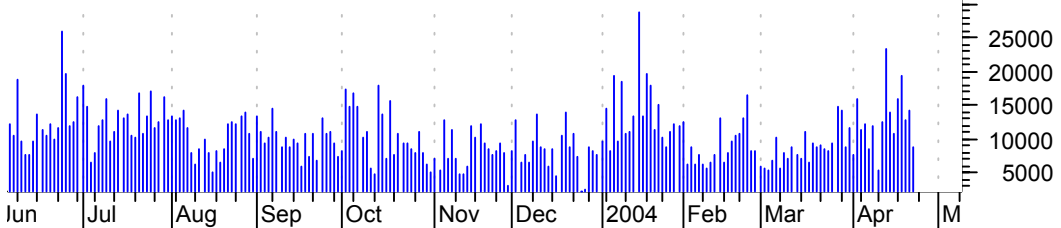
NET asc. tri. / buy on upside brkout on larger than normal volume

Networks Associa (19.1500, 19.5000, 18.6700, 19.0400 -0.7100)



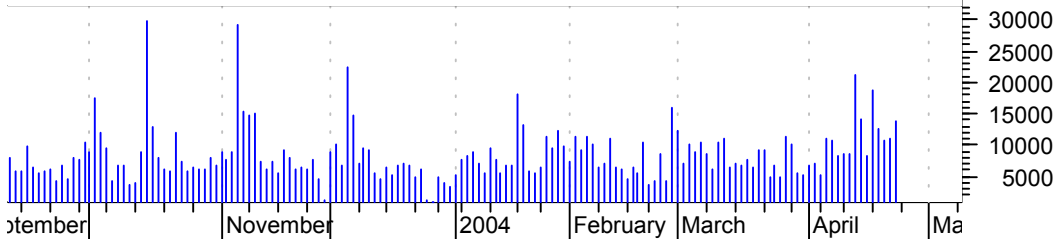
NTRS bear pennant / sell on downside brkout on increased volume

Northern Trust C (44.7000, 44.8900, 44.1700, 44.7500 -0.1200)



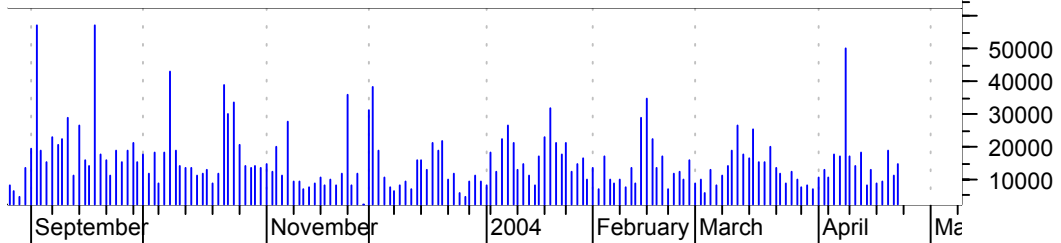
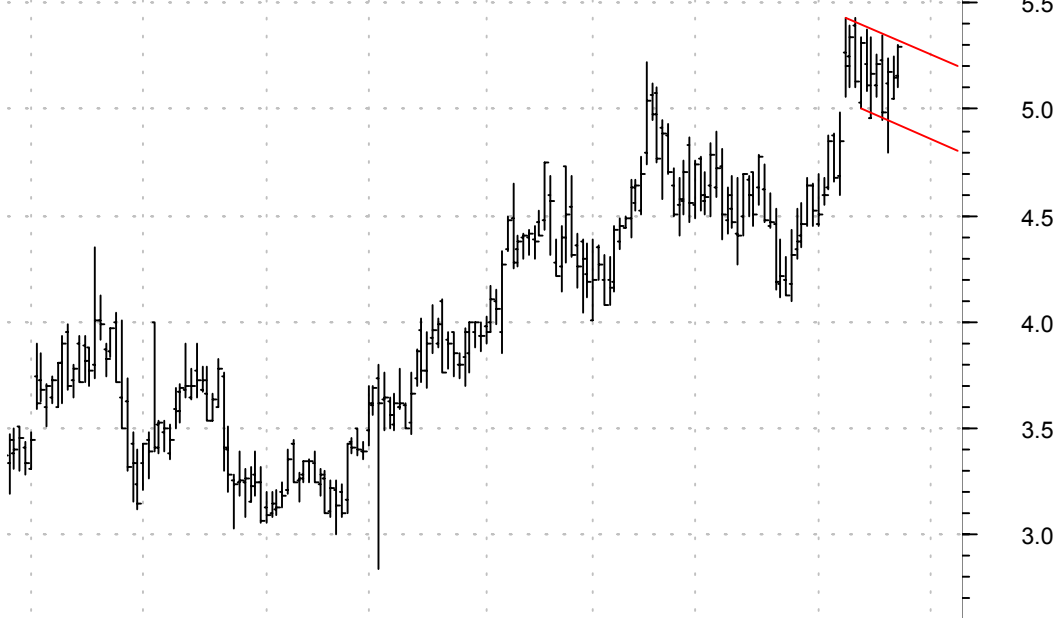
PH symm. tri. / buy on upside brkout on larger than normal volume

Parker Hannifin (57.8000, 58.8500, 57.3100, 57.8300 -1.5200)



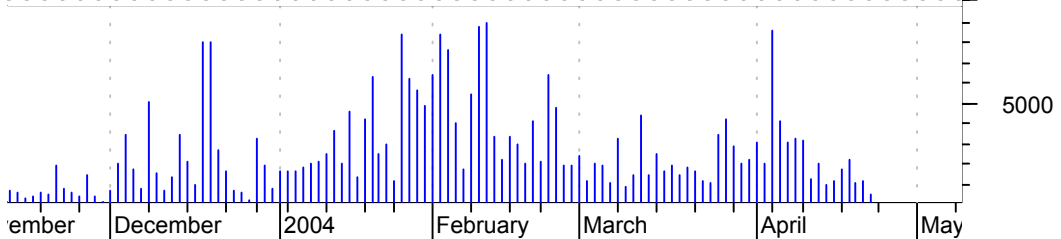
PMTC sloppy bull flag / buy on upside brkout on increased volume

Parametric Techn (5.1600, 5.3000, 5.1000, 5.2900 +0.1400)



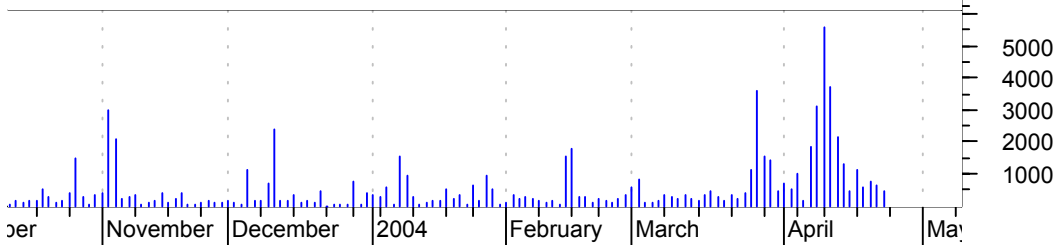
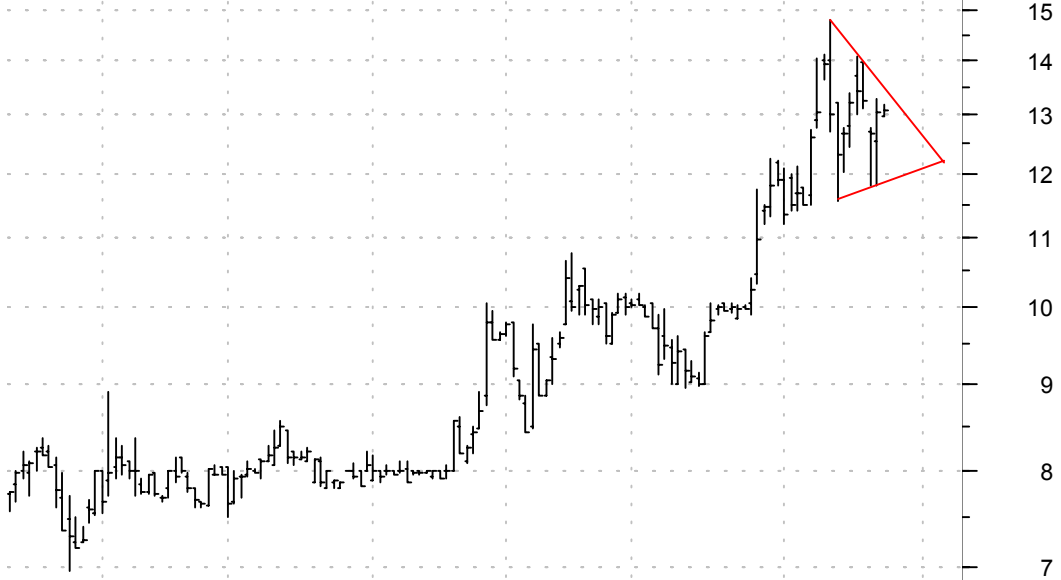
PMTI symm. tri. / buy on upside brkout on increased volume

Palomar Medical (19.0800, 19.0800, 18.6400, 18.8800 -0.1700)



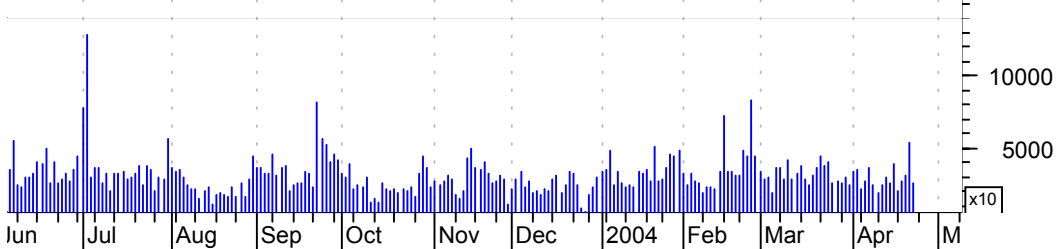
QUIN symm. tri. / buy on upside brkout on increased volume

QUINTON CARDIOL (12.9700, 13.1800, 12.9700, 13.0700 +0.0300)



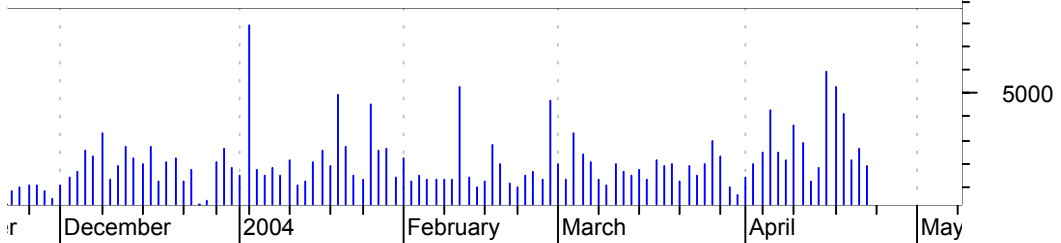
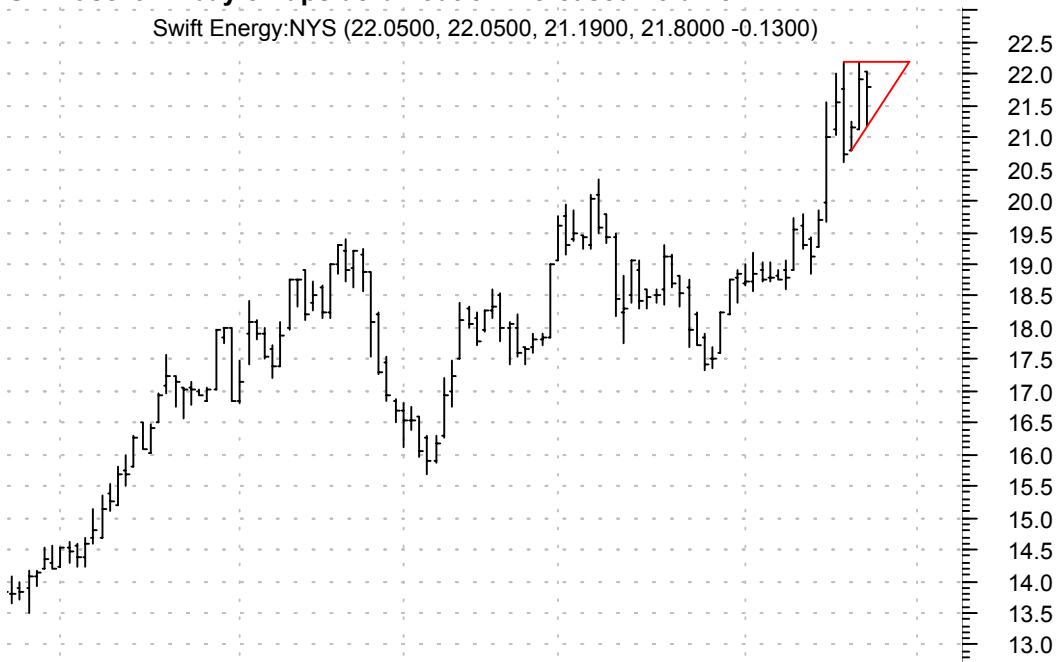
SBUX rectangle / buy on upside brkout on increased volume

Starbucks Corp:O (39.1700, 39.3700, 38.7000, 39.1800 +0.1200)



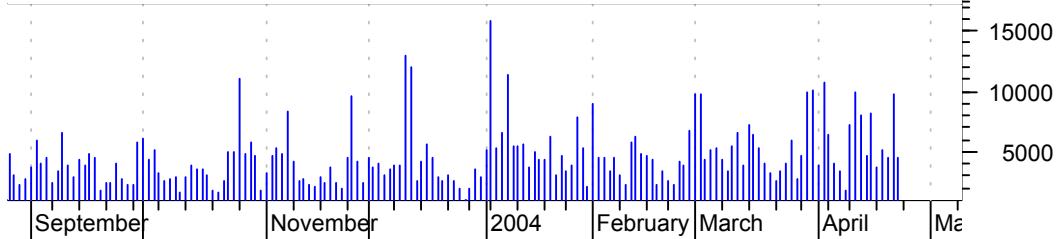
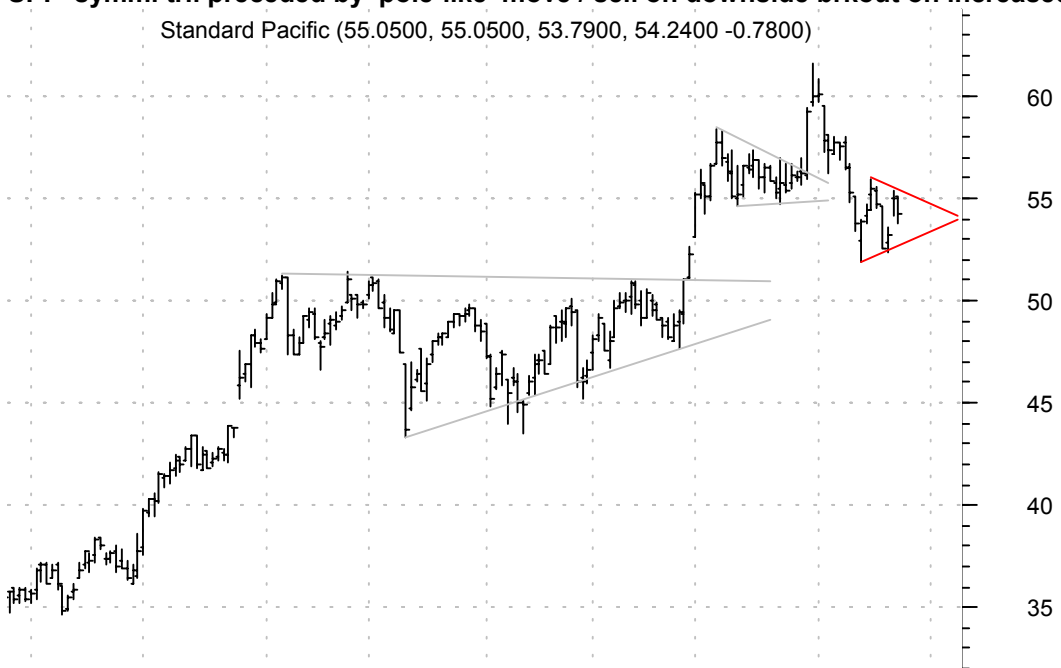
SFY asc. tri. / buy on upside breakout on increased volume

Swift Energy:NYS (22.0500, 22.0500, 21.1900, 21.8000 -0.1300)

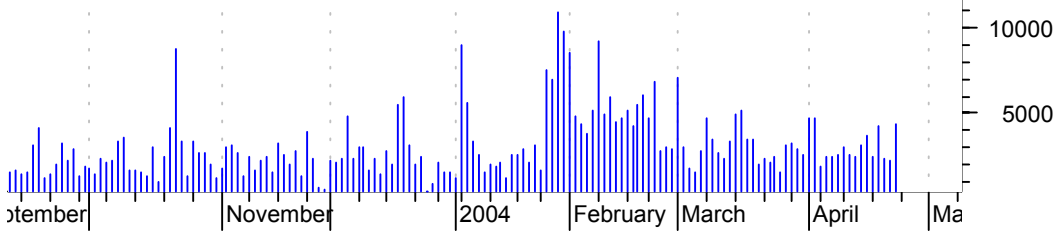


SPF symm. tri. preceded by 'pole-like' move / sell on downside breakout on increased volume

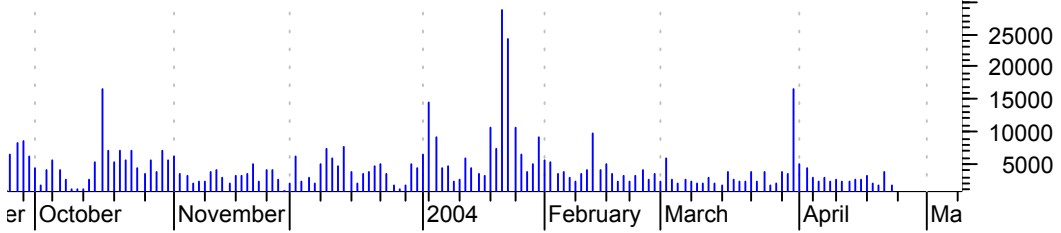
Standard Pacific (55.0500, 55.0500, 53.7900, 54.2400 -0.7800)



TEN symm. tri. / buy on upside breakout thru dotted red line on larger than normal volume



TKR bull pennant / buy on upside breakout on increased volume



UBET falling wedge preceded by 'pole-like' move / buy on upside brkout on increased volume

YouBet.com Inc:O (5.3700, 5.4000, 5.1200, 5.4000 +0.0300)



chartpatterns.com

Chart Pattern Analysis for Timing the Markets

KMatras@aol.com