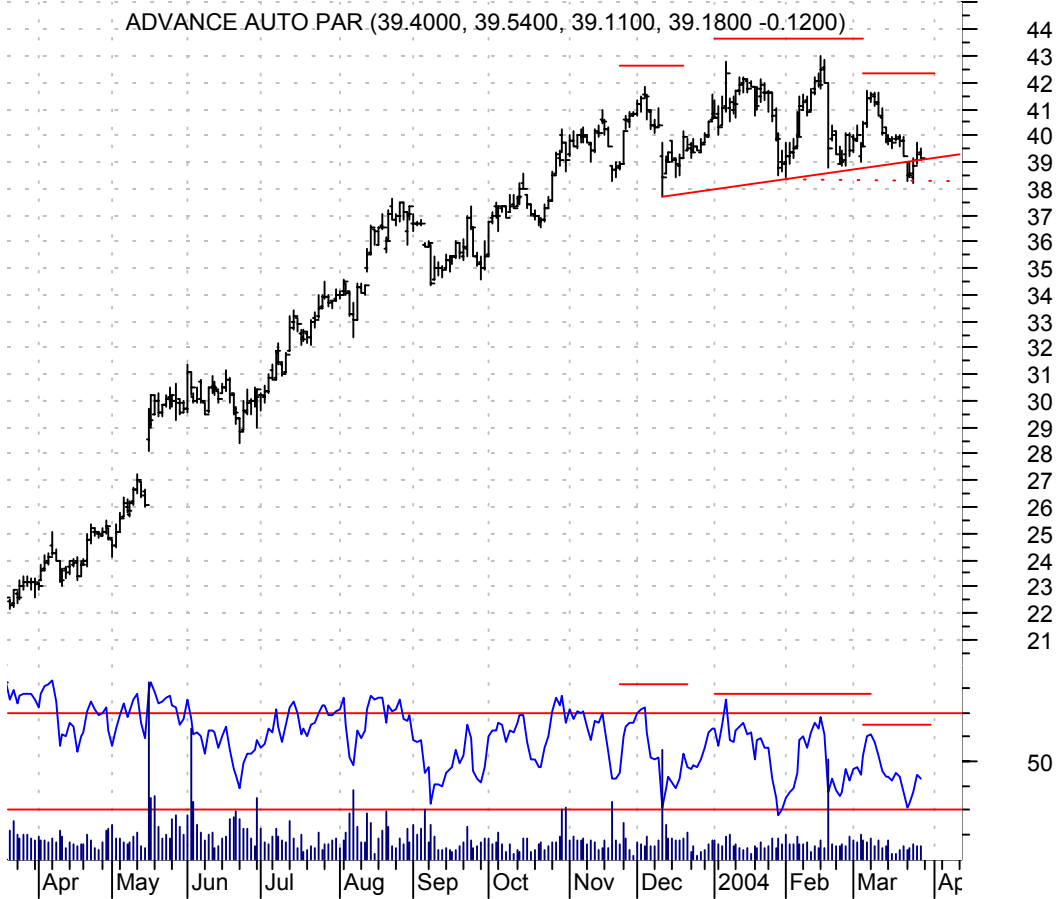


**AAP 'complicated' h. & sh. / sell on downside brkout thru dotted red line on increased volume**

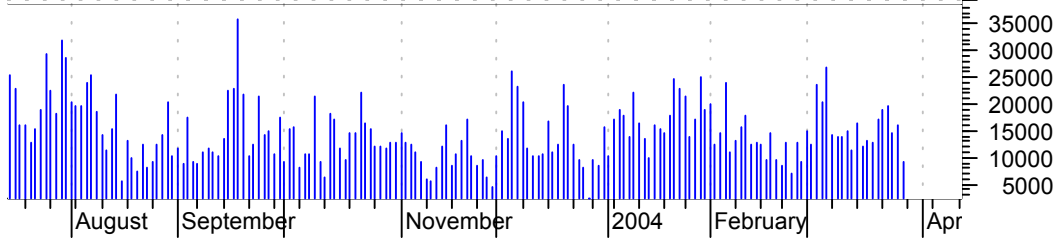


**ACCL symm. tri. / buy on upside brkout on increased volume**



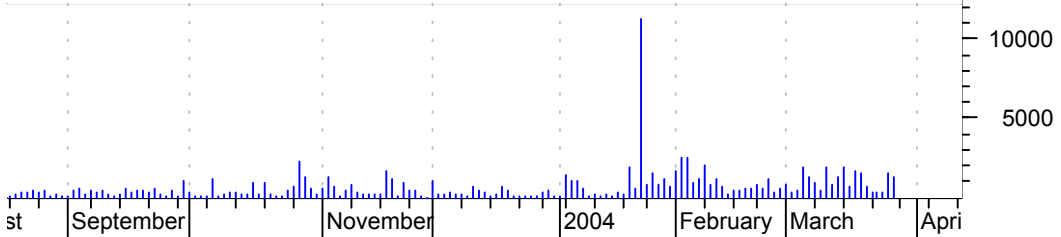
**BR falling wedge / buy on upside breakout on increased volume**

Burlington-Resou (59.6600, 60.9700, 59.6000, 60.2900 +0.6300)



**CACH symm. tri. / buy on upside breakout on increased volume**

Cache Inc:OTC (30.2500, 30.9600, 29.7500, 30.6100 +0.3600)



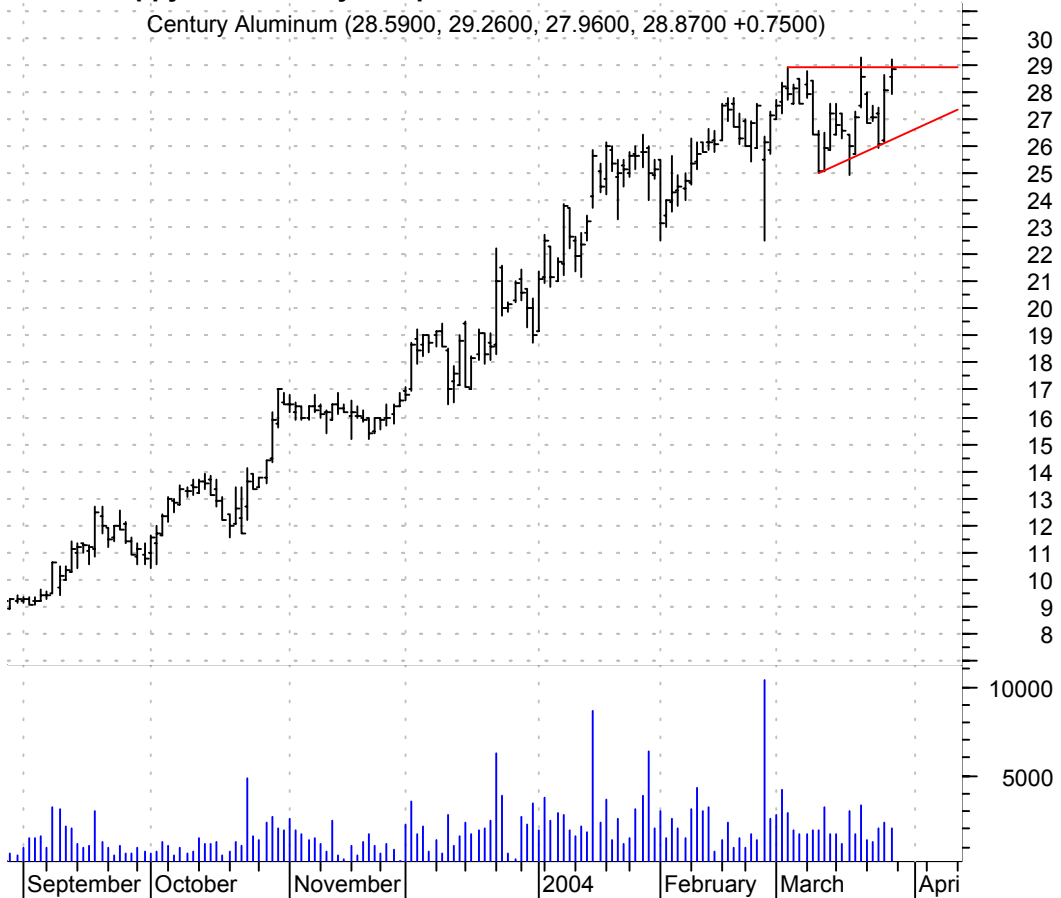
**CCBI falling wedge / buy on upside brkout on increased volume**

COMMERCIAL CAPIT (21.8500, 21.8500, 21.2500, 21.4900 -0.2900)

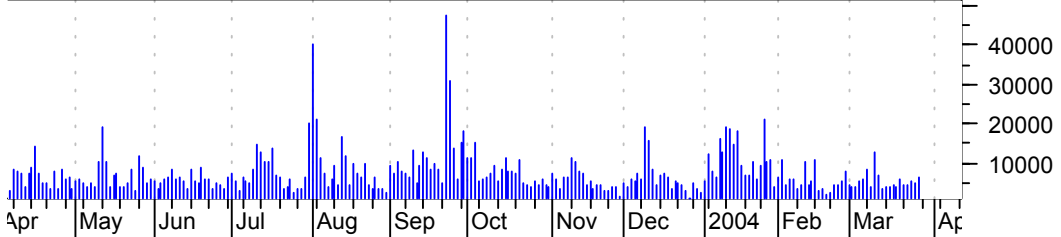
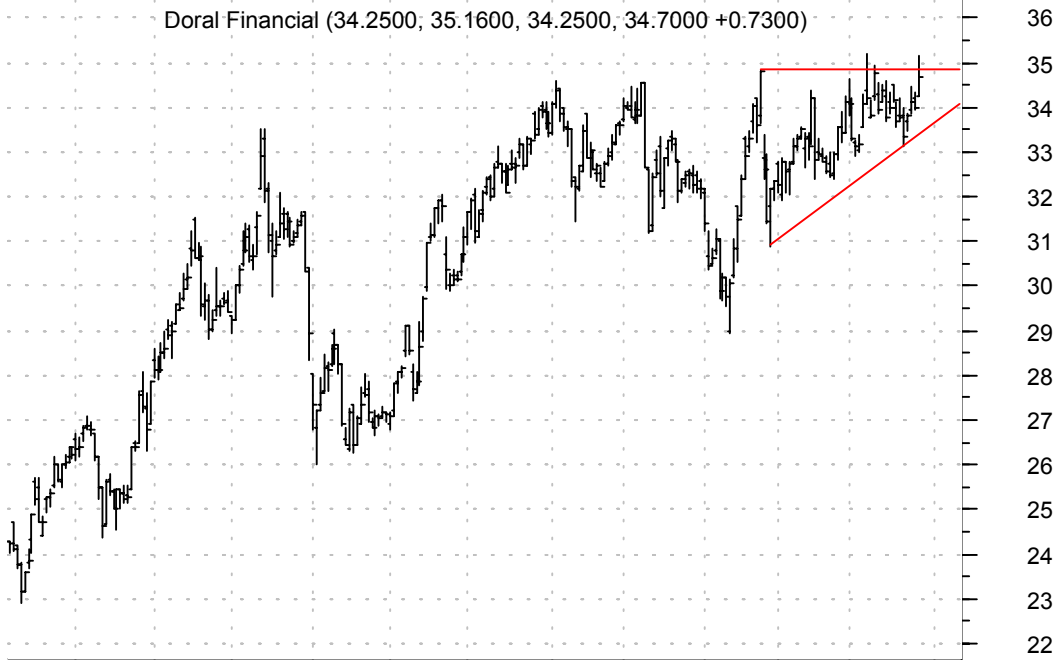


**CENX sloppy asc. tri. / buy on upside brkout on increased volume**

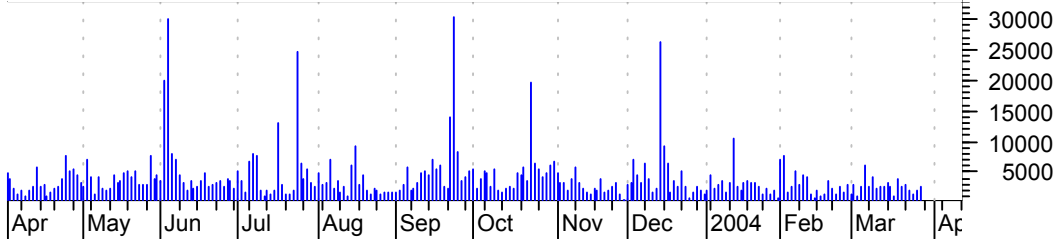
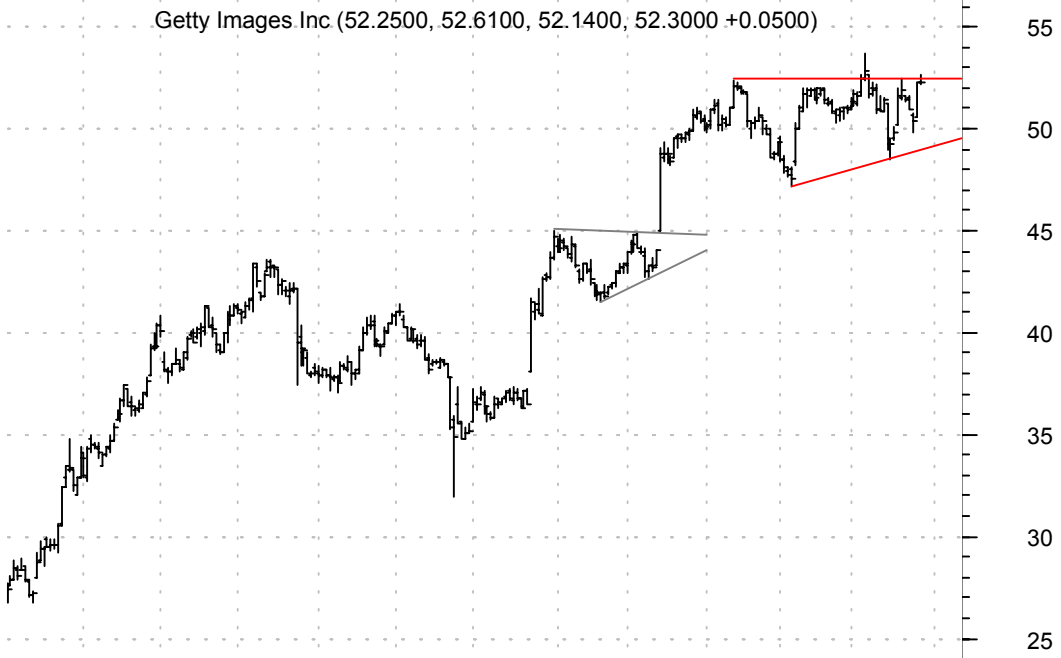
Century Aluminum (28.5900, 29.2600, 27.9600, 28.8700 +0.7500)



**DRL sloppy asc. tri. / buy on upside brkout on increased volume**

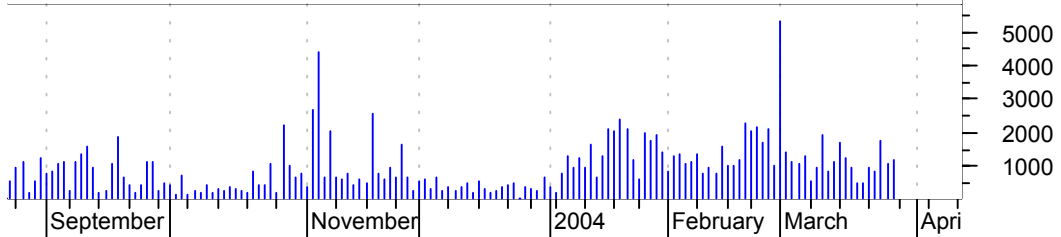
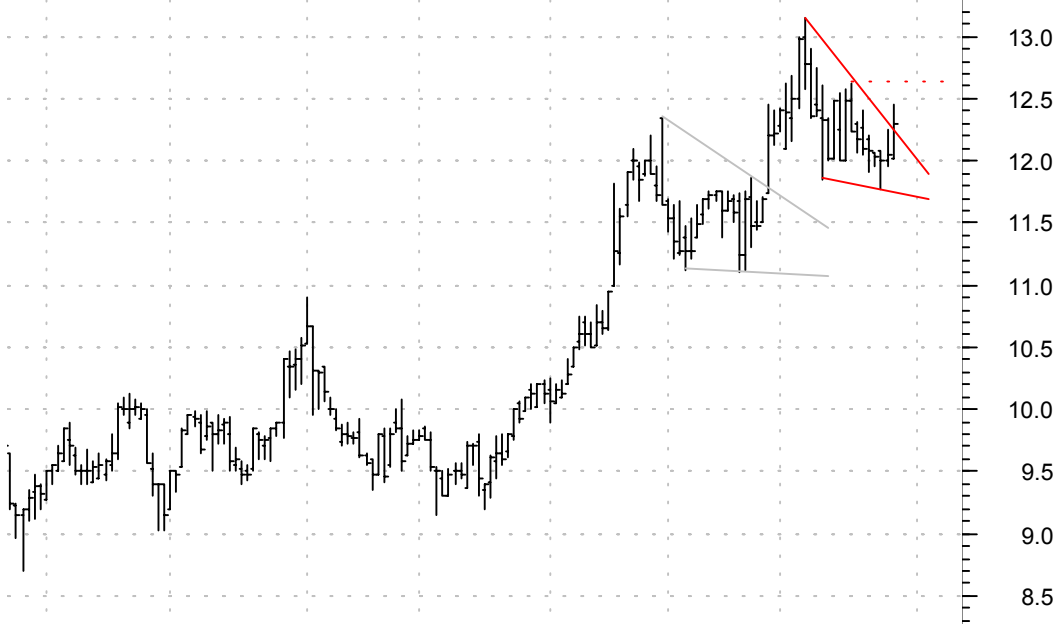


**GYI sloppy asc. tri. / buy on upside brkout on increased volume**



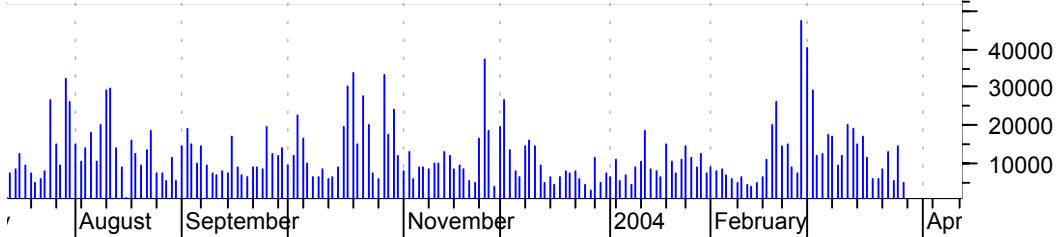
**ITN falling wedge / buy on upside brkout thru dotted red line on increased volume**

Intertan Int'l I (12.0200, 12.4500, 12.0200, 12.3000 +0.2500)

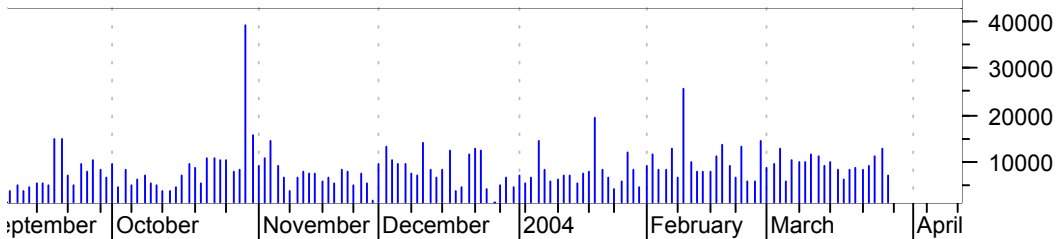


**IVX desc. tri. / sell on downside brkout on increased volume**

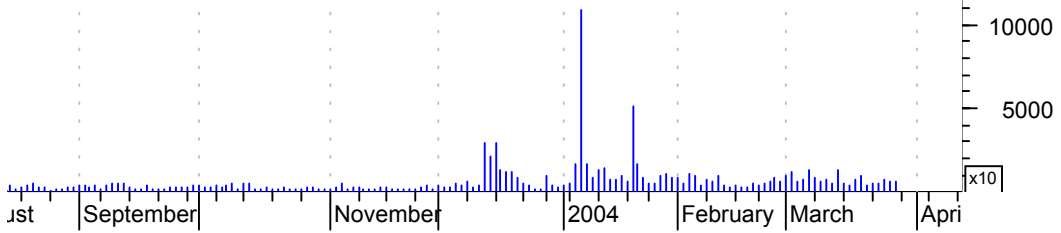
IVAX Cp:AMEX (22.5400, 22.8400, 22.3000, 22.5500 +0.000)



**LNC symm. tri. / sell on downside brkout on increased volume**

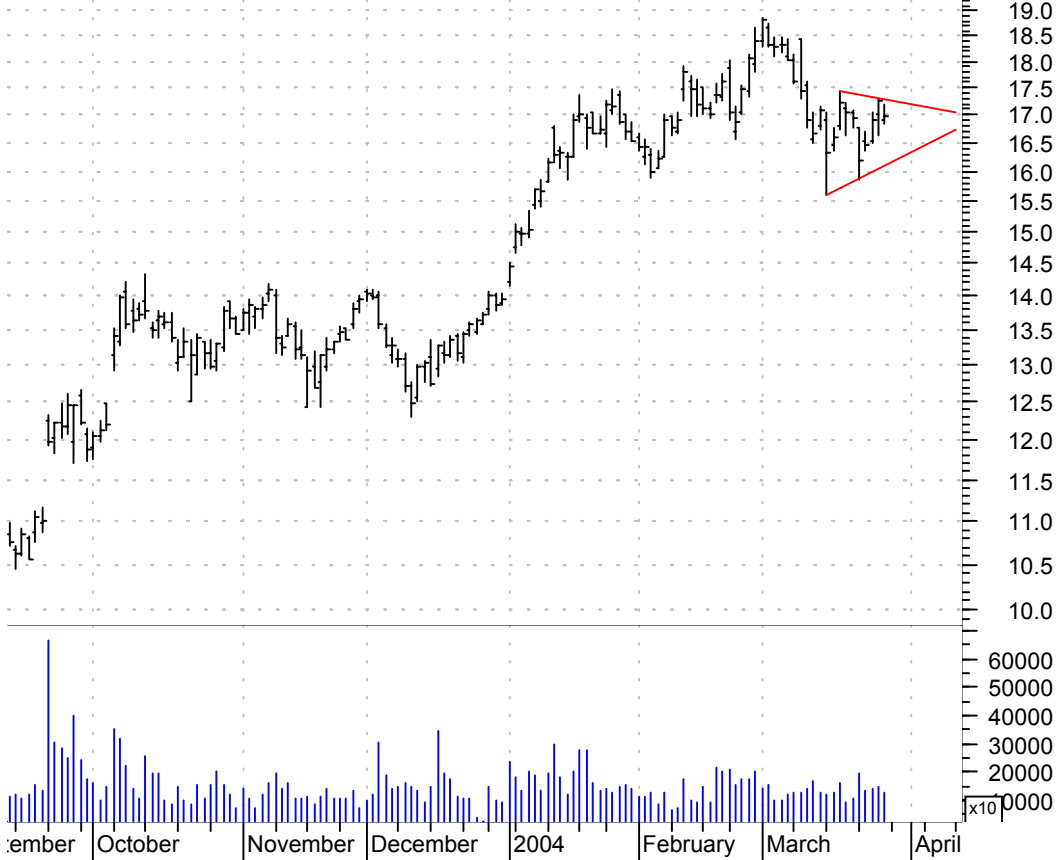


**MHR symm. tri. / buy on upside brkout on increased volume**



**MOT symm. tri. / sell on downside brkout on increased volume**

Motorola Inc:NYS (16.9000, 17.1800, 16.8500, 16.9800 -0.2700)



**MVK sloppy bull flag / buy on upside brkout on increased volume**

Maverick Tube Cp (22.4800, 23.2000, 22.4300, 23.0000 +0.6300)



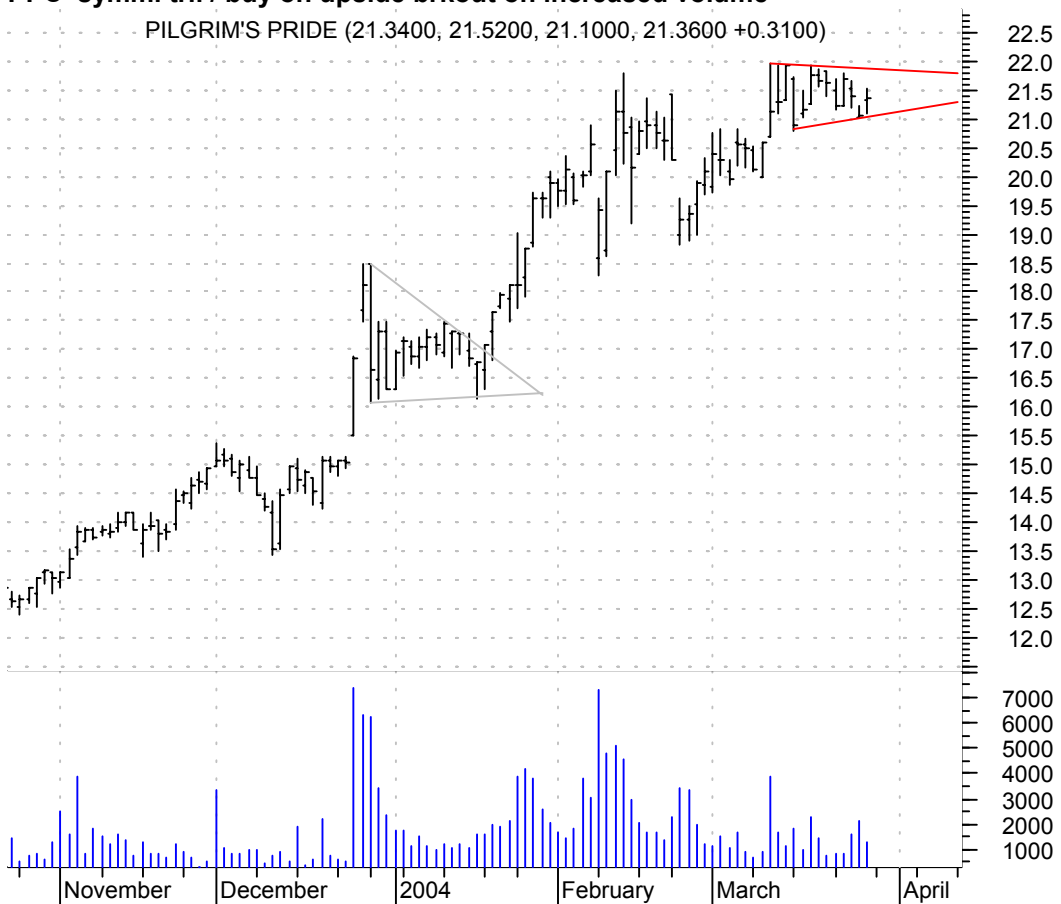
**OSG symm. tri. / buy on upside brkout on increased volume**

Overseas Shiphld (34.7600, 35.6100, 34.6800, 35.4400 +0.6800)



**PPC symm. tri. / buy on upside brkout on increased volume**

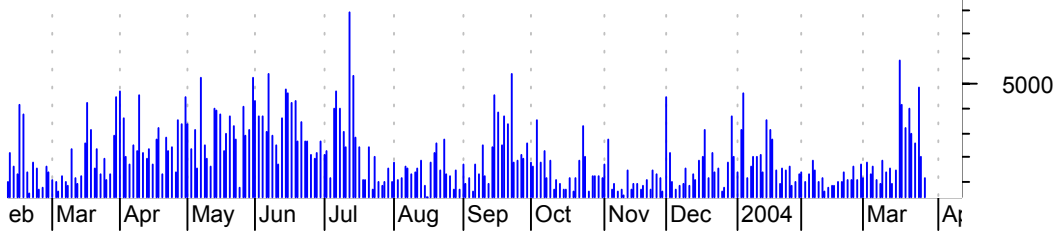
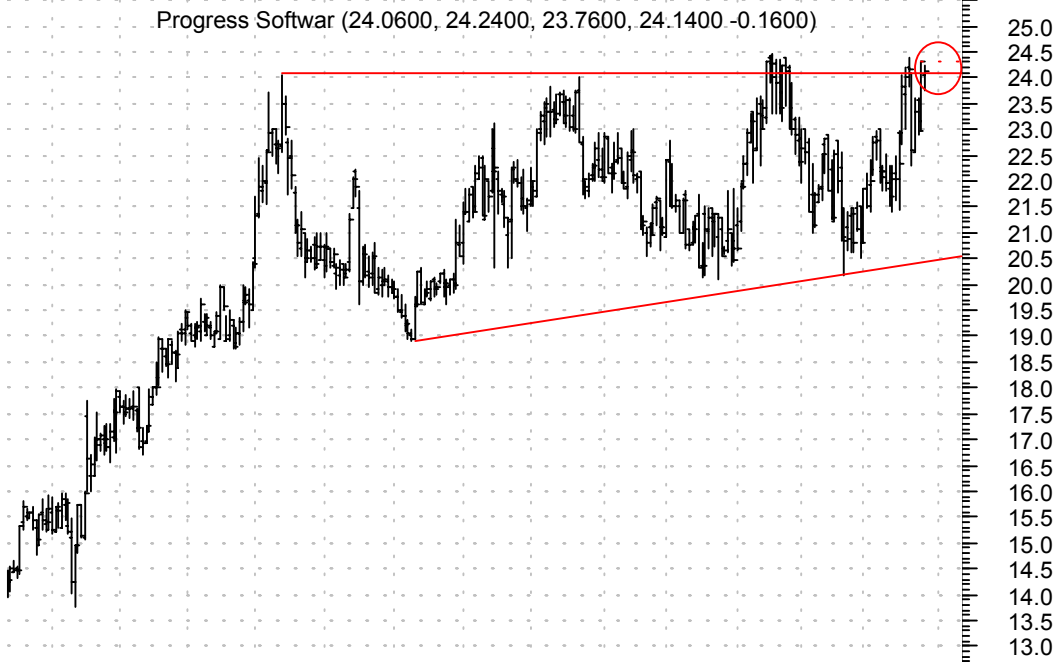
PILGRIM'S PRIDE (21.3400, 21.5200, 21.1000, 21.3600 +0.3100)





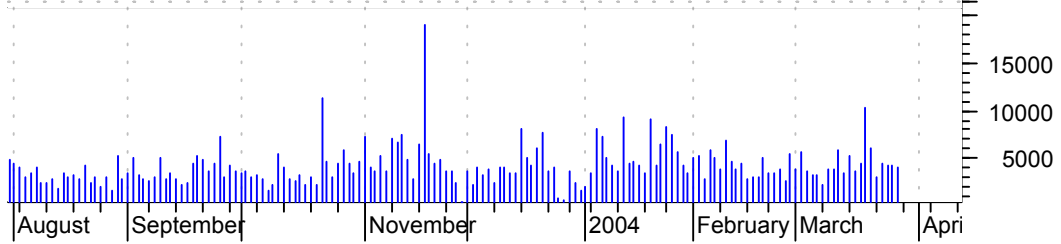
**PRGS large asc. tri. / buy on upside follow-thru (dotted red line [circled]) on increased volume**

Progress Softwar (24.0600, 24.2400, 23.7600, 24.1400 -0.1600)



**R sloppy asc. tri. / buy on upside breakout on increased volume**

Ryder Systems In (37.1200, 37.4300, 36.6700, 36.8300 -0.2300)



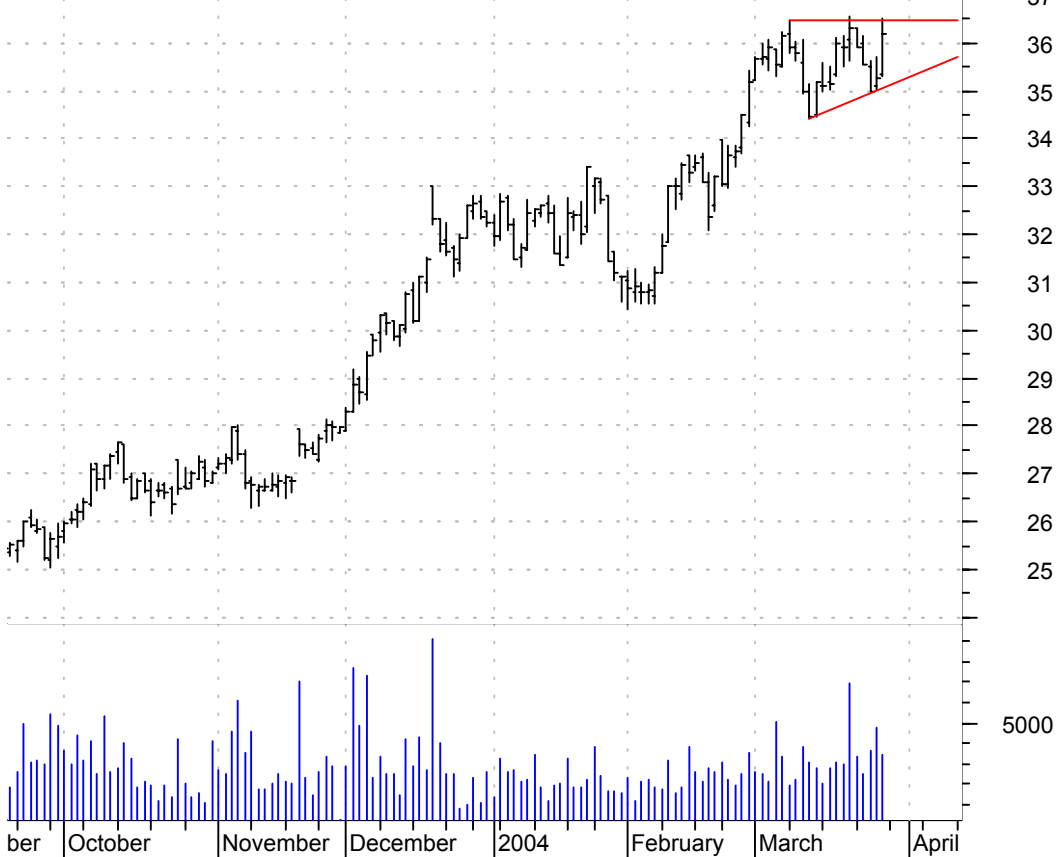
**SGY falling wedge / buy on upside breakout on increased volume**

Stone Energy Cor (47.3500, 48.1900, 47.2200, 47.6000 +0.2500)



**TBI asc. tri. / buy on upside breakout on increased volume**

Brown (Tom) Inc. (35.3500, 36.5000, 35.3000, 36.1900 +0.9100)



**TJX symm. tri. / buy on upside brkout on increased volume**

TJX Companies In (24.1400, 24.5500, 24.0100, 24.3700 +0.2400)



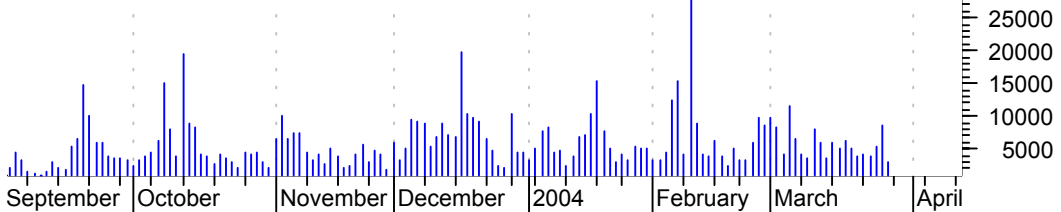
**UPCS falling wedge / buy on upside brkout thru dotted red line on increased volume**

Ubiquitel Inc:OT (3.6500, 3.8200, 3.6300, 3.7700 +0.0700)



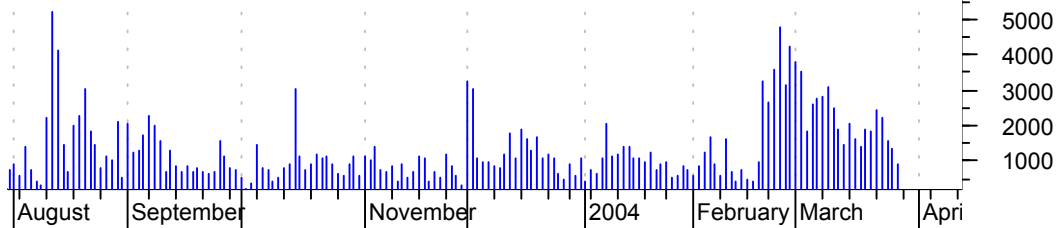
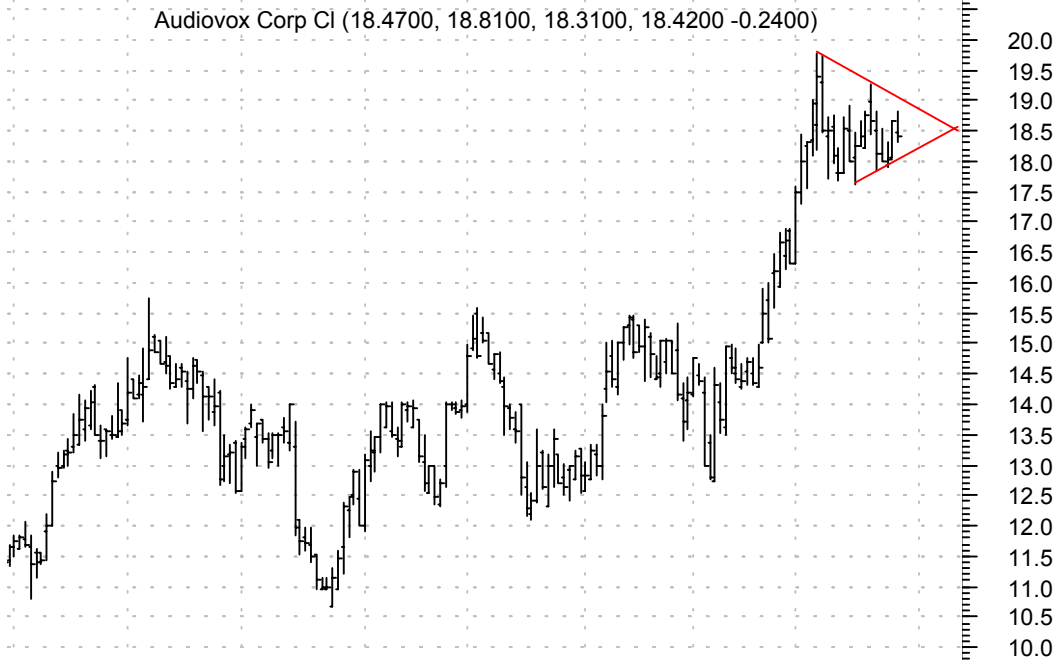
**UPL symm. tri. / buy on upside brkout on increased volume**

ULTRA PETROLEUM (28.0000, 28.5000, 27.9600, 28.5000 +0.4500)



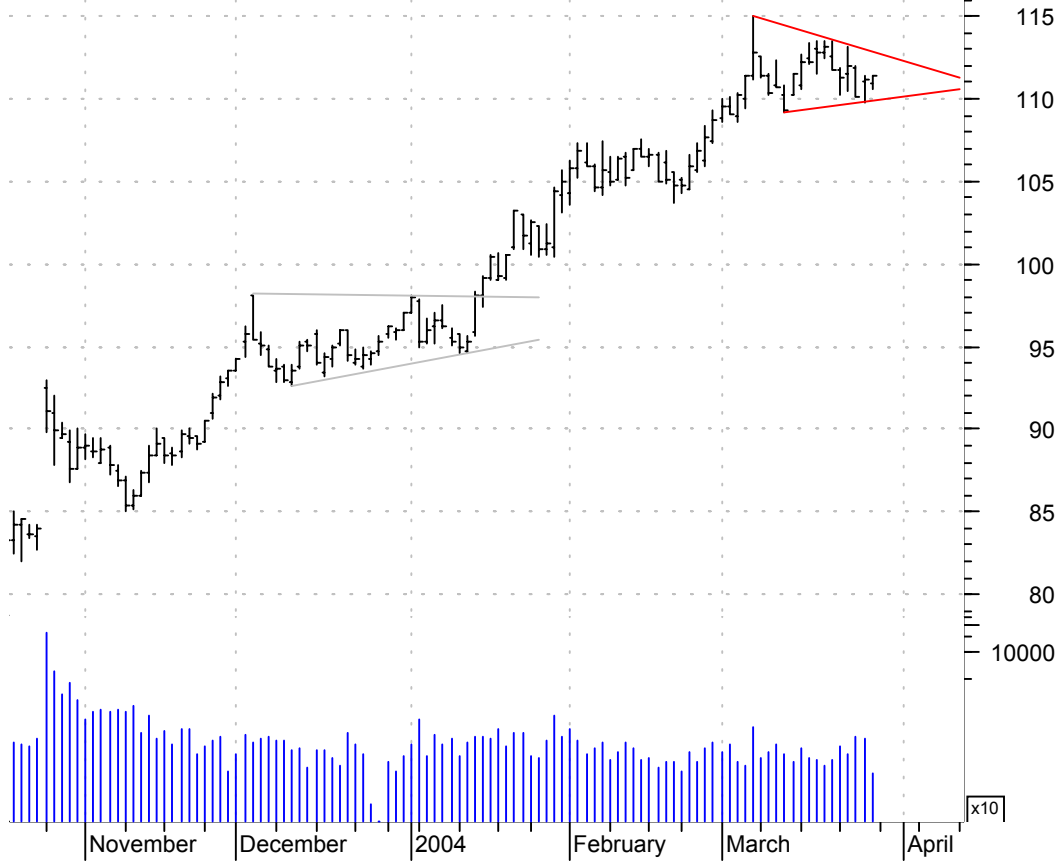
**VOXX symm. tri. preceded by 'pole-like' move / buy on upside brkout on increased volume**

Audiovox Corp Cl (18.4700, 18.8100, 18.3100, 18.4200 -0.2400)



**WLP symm. tri. / buy on upside brkout on increased volume**

Wellpoint Health (110.950, 111.400, 110.630, 111.350 +0.1700)



**WRC symm. tri. / buy on upside brkout on increased volume**

WESTPORT RESOURC (32.0000, 32.2900, 31.9500, 32.2300 +0.2400)



**chartpatterns.com**  
Chart Pattern Analysis for Timing the Markets

[KMatras@aol.com](mailto:KMatras@aol.com)