

**ATPG symm. tri. / buy on upside brkout on increased volume**

ATP OIL & GAS CP (13.5400, 13.5400, 13.2800, 13.4000 +0.0900)



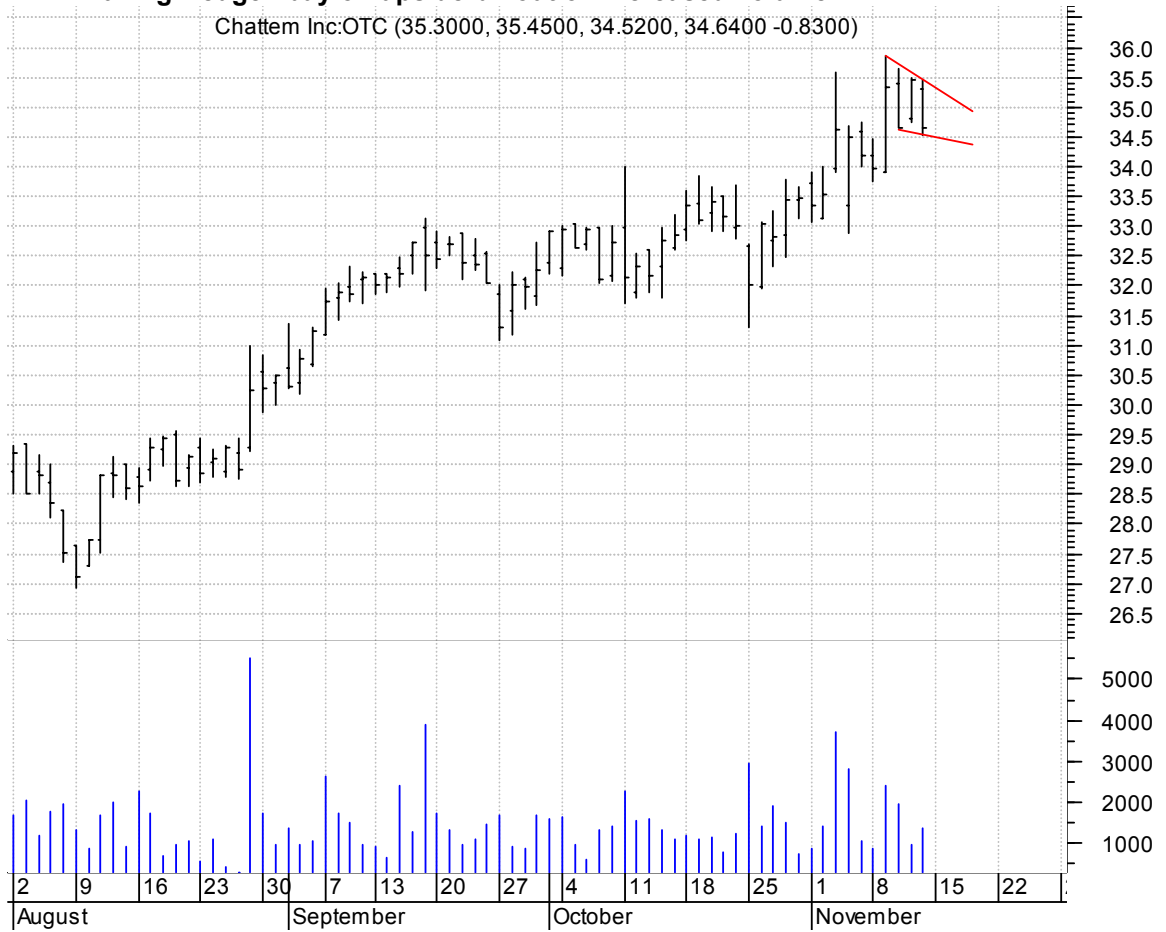
**BELM asc. tri. / buy on upside brkout on increased volume**

Bell Microproduc (8.7700, 9.0000, 8.6100, 8.9700 +0.0300)



**CHTT falling wedge / buy on upside breakout on increased volume**

Chatterm Inc:OTC (35.3000, 35.4500, 34.5200, 34.6400 -0.8300)



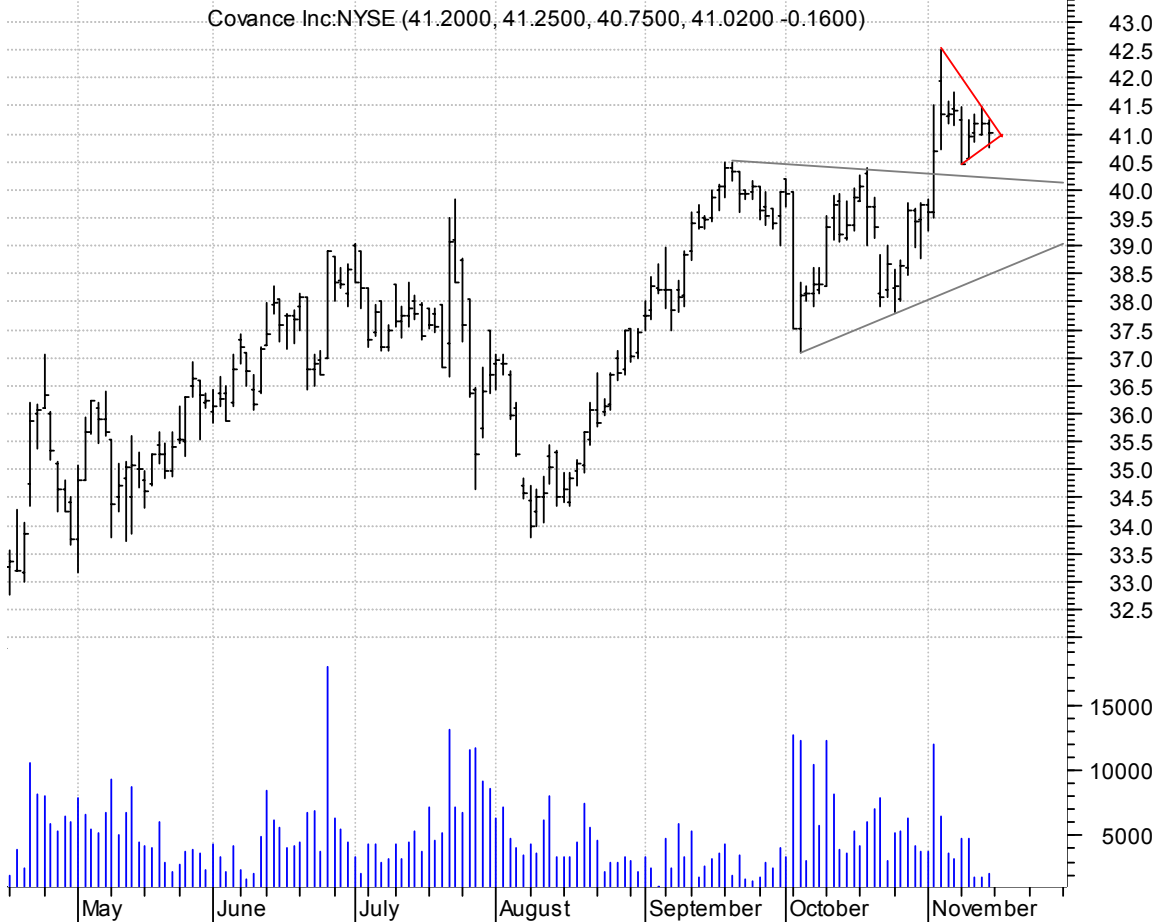
**CTS symm. tri. / buy on upside breakout on increased volume**

CTS Corporation: (13.3700, 13.5000, 13.3400, 13.5000 +0.0500)



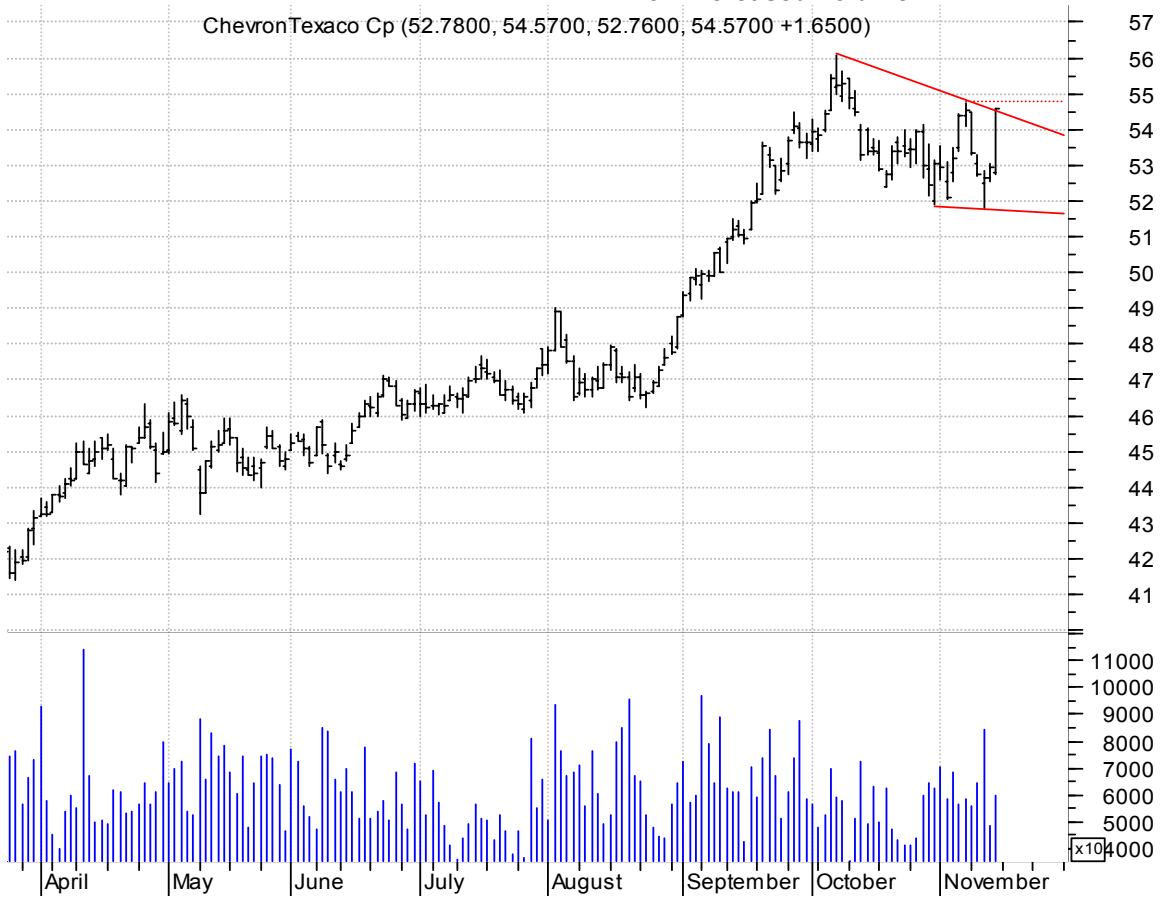
**CVD symm. tri. preceded by 'pole-like' move / buy on upside brkout on increased volume**

Covance Inc:NYSE (41.2000, 41.2500, 40.7500, 41.0200 -0.1600)



**CVX falling wedge preceded by 'pole-like' move / buy on upside brkout thru dotted red line on increased volume**

ChevronTexaco Cp (52.7800, 54.5700, 52.7600, 54.5700 +1.6500)



**DNR symm. tri. / buy on upside brkout on increased volume**

Denbury Resource (25.2700, 26.0500, 25.2100, 26.0500 +0.7400)



**DVN symm. tri. / buy on upside brkout on increased volume**

Devon Energy Cp: (74.8000, 76.2700, 74.5700, 75.9000 +1.3300)



### EOG bullish flag / buy on upside breakout on increased volume

EOG Resources:NY (65.5300, 68.5000, 65.2800, 68.3700 +2.8400)



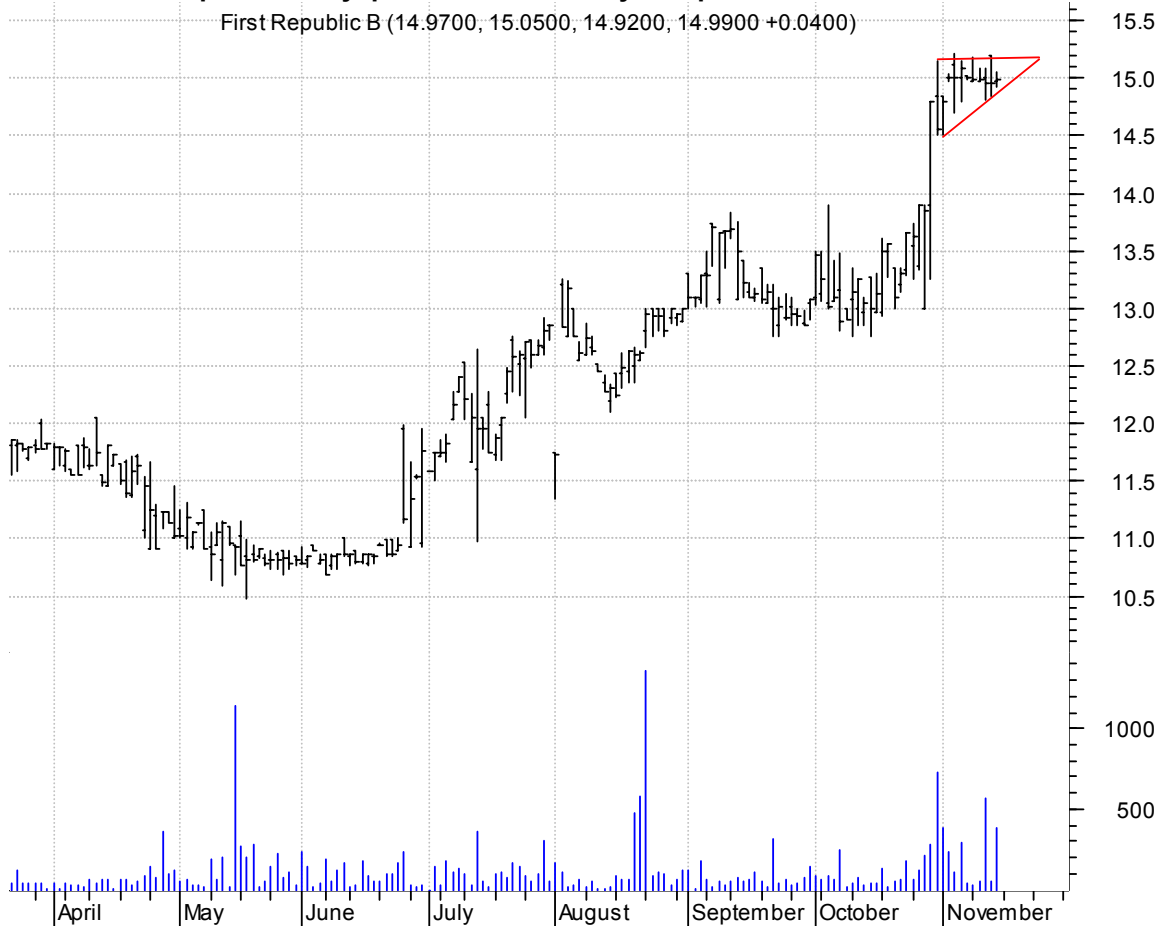
### FFIV bull flagging / buy on upside breakout on increased volume

F5 Network Inc:O (42.1300, 43.4600, 41.7900, 42.6100 +0.6400)



**FRBK asc. tri. preceded by 'pole-like' move / buy on upside brkout on increased volume**

First Republic B (14.9700, 15.0500, 14.9200, 14.9900 +0.0400)



**GTW asc. tri. / buy on upside brkout on increased volume**

Gateway Inc:NYSE (5.8500, 5.8900, 5.8100, 5.8600 +0.0100)



**HAL asc. tri. / buy on upside brkout on increased volume**

Halliburton Co:N (37.2500, 38.1700, 37.1100, 38.0000 +0.7200)



**INSP symm. tri. / buy on upside brkout thru dotted red line on increased volume**

Infospace Inc:OT (54.5300, 56.7400, 53.9400, 55.8300 +1.6000)



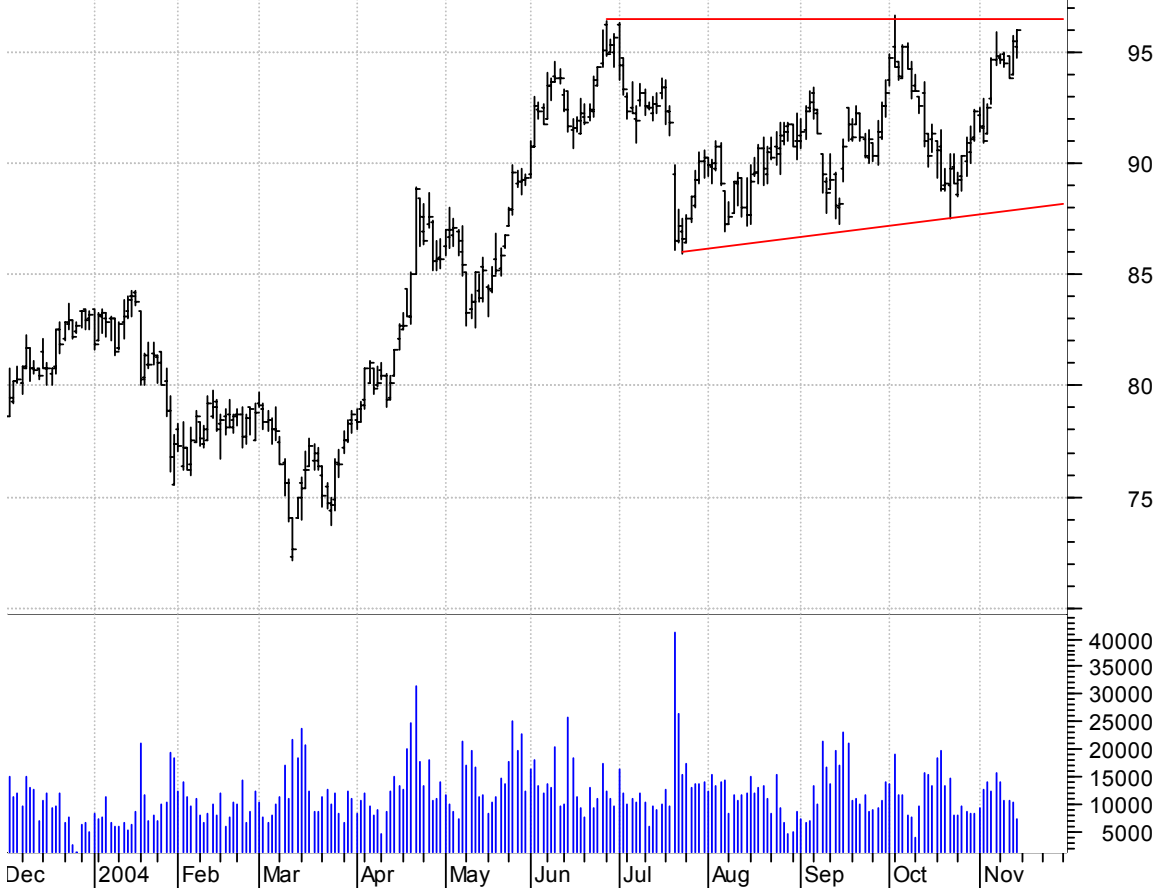
**IONA asc. tri. / buy on upside breakout on increased volume**

Iona Tech Plc AD (4.5900, 4.7500, 4.5900, 4.6500 +0.0500)



**ITW asc. tri. / buy on upside breakout on increased volume**

Illinois Tool Wo (95.1900, 95.9800, 94.7200, 95.9800 +0.5400)





**JWN asc. tri. / buy on upside breakout on increased volume**

Nordstrom Inc:NY (45.0500, 45.9100, 45.0000, 45.7200 +0.6700)



**KFY asc. tri. / buy on upside breakout on increased volume**

Korn Ferry Inter (19.1200, 19.3500, 18.8700, 19.3500 +0.2300)



**LIFC symm. tri. / buy on upside breakout on increased volume**

Lifecell Cp:OTC (9.9200, 10.0100, 9.9200, 10.0000 +0.0100)



**OXY symm. tri. / buy on upside breakout on increased volume**

Occidental Petro (56.6200, 57.9100, 56.5400, 57.9100 +1.3900)



**PCO symm. tri. / buy on upside breakout on increased volume**

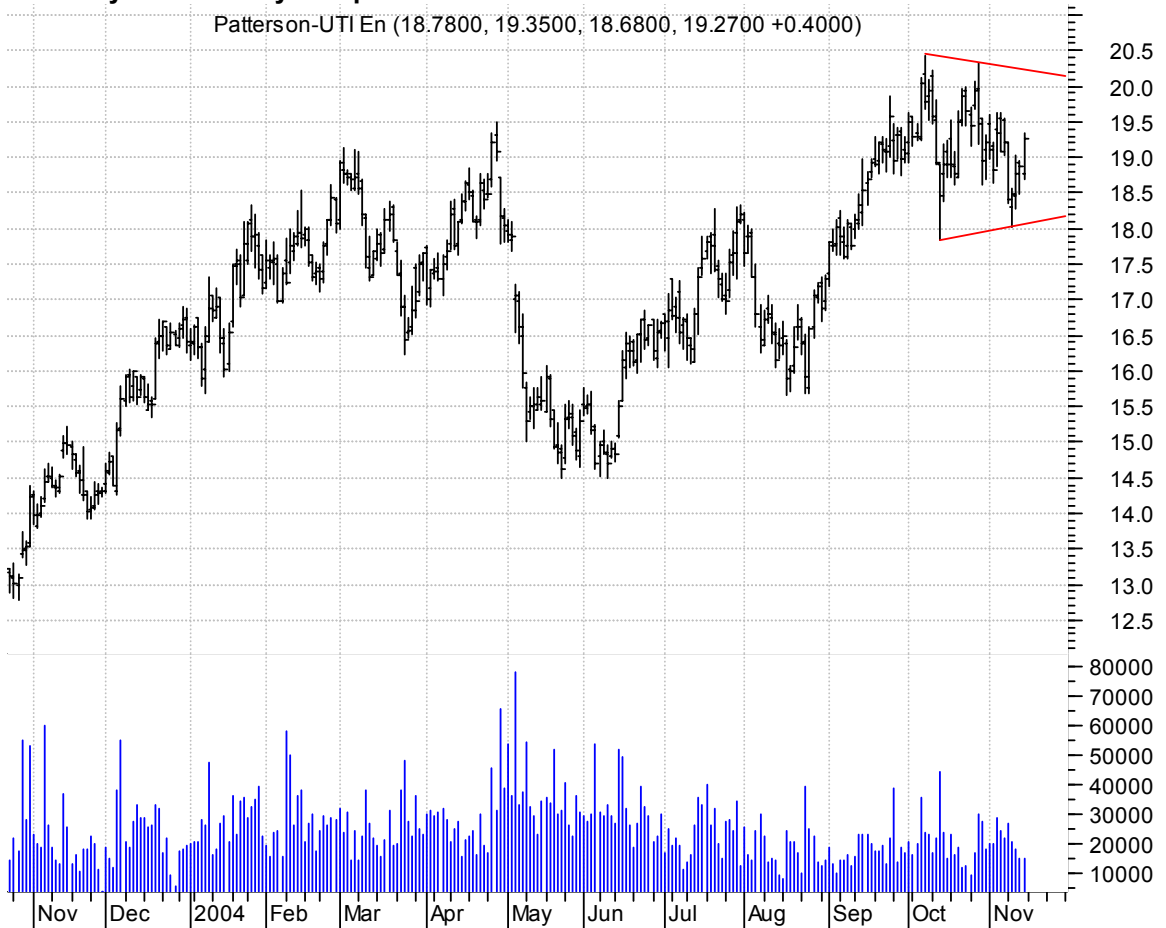


**PPC bull pennant / buy on upside breakout on increased volume**



**PTEN symm. tri. / buy on upside breakout on increased volume**

Patterson-UTI En (18.7800, 19.3500, 18.6800, 19.2700 +0.4000)



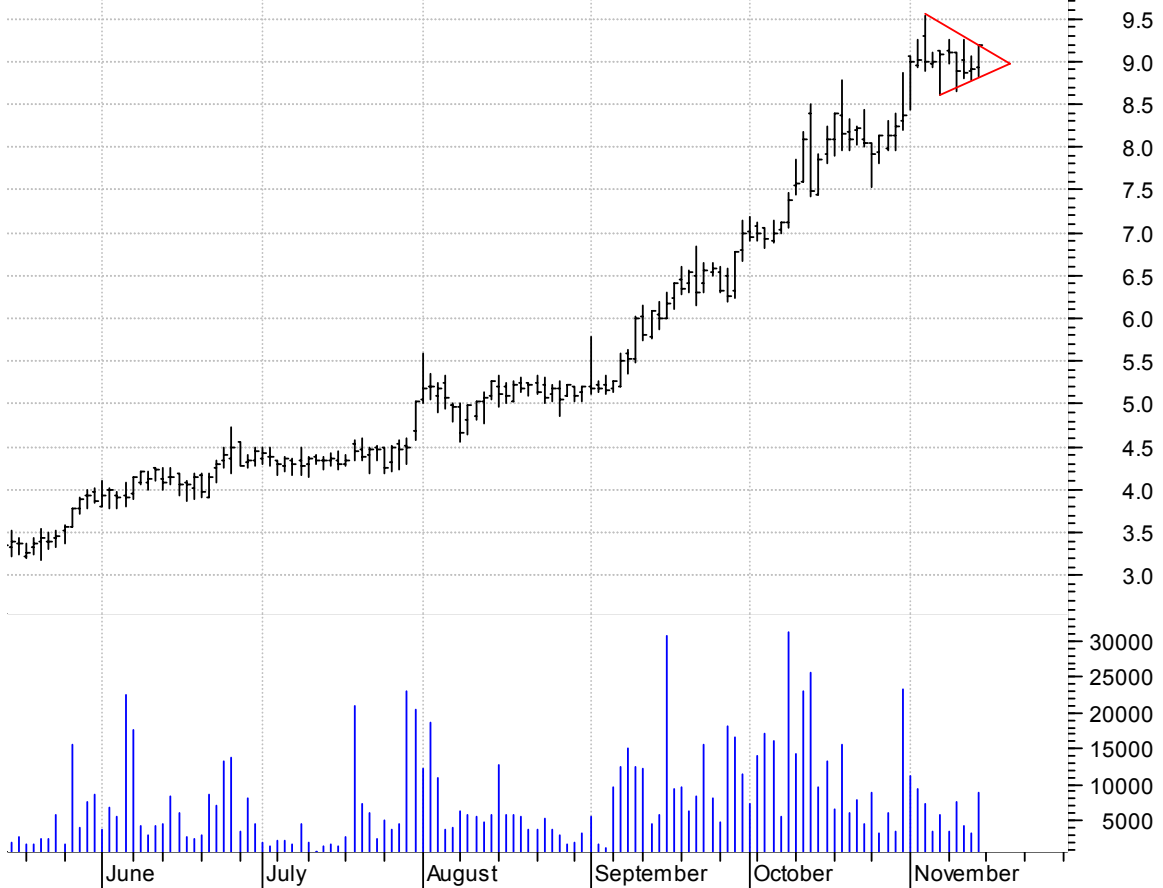
**QGENF falling wedge / buy on upside breakout thru dotted red line on increased volume**

Qiagen NV:OTC (11.0100, 11.0200, 10.8400, 10.9500 -0.0500)



**SBAC symm. tri. / buy on upside breakout on increased volume**

SBA Commun Cp:OT (8.9300, 9.2000, 8.8300, 9.2000 +0.3000)



**SGMS symm. tri. preceded by 'pole-like' move / buy on upside breakout on increased volume**

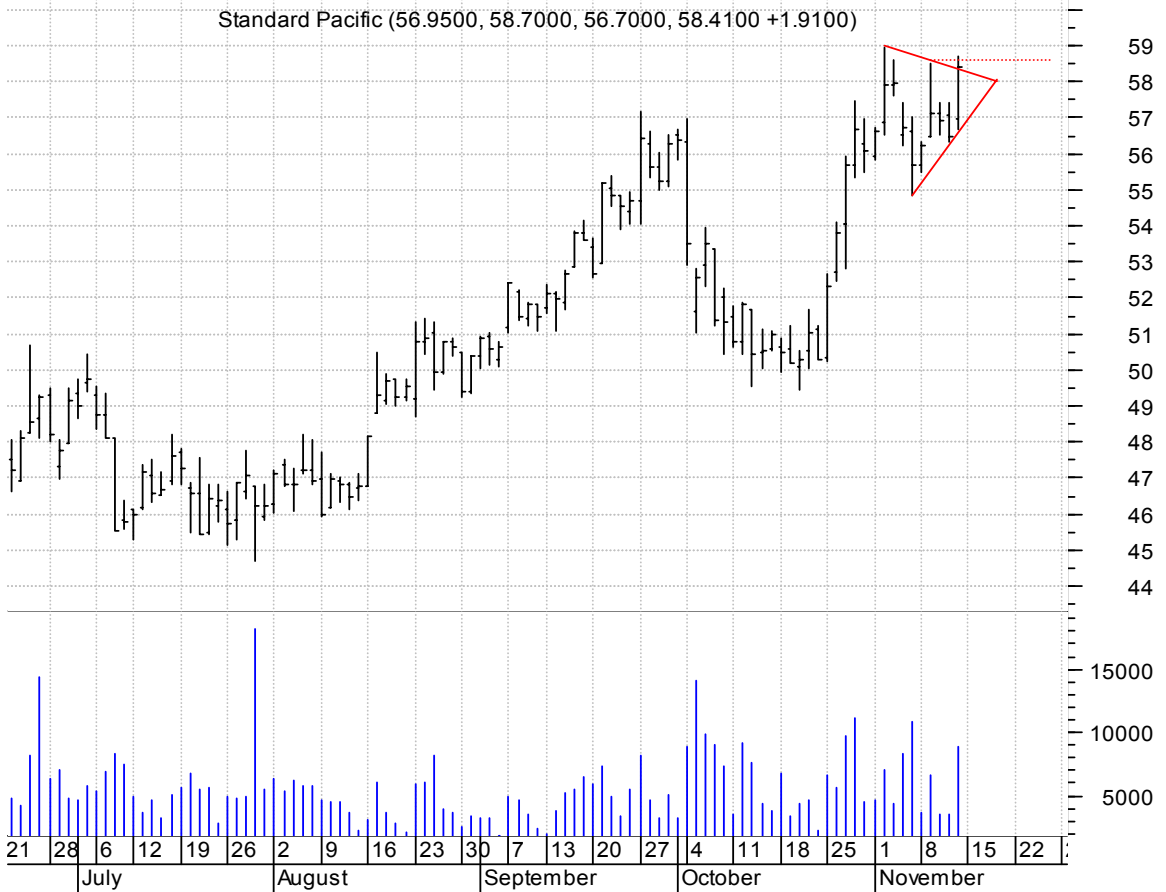
Scientific Games (22.7900, 22.9500, 22.5000, 22.8500 +0.0000)



**SGTL rectangle / buy on upside breakout on increased volume**



**SPF symm. tri. preceded by 'pole-like' move / buy on upside breakout thru dotted red line on increased volume**



**SYMC symm. tri. / buy on upside brkout on increased volume**

Symantec Cp:OTC (61.5000, 61.6900, 60.2200, 60.9700 -0.0100)



**THX bullish flagging / buy on upside brkout on increased volume**

Houston Explorat (56.7700, 57.6000, 56.4000, 57.3300 +0.6000)



**UPL symm. tri. / buy on upside brkout on increased volume**



**VLCK asc. tri. preceded by 'pole-like' move / buy on upside brkout on increased volume**





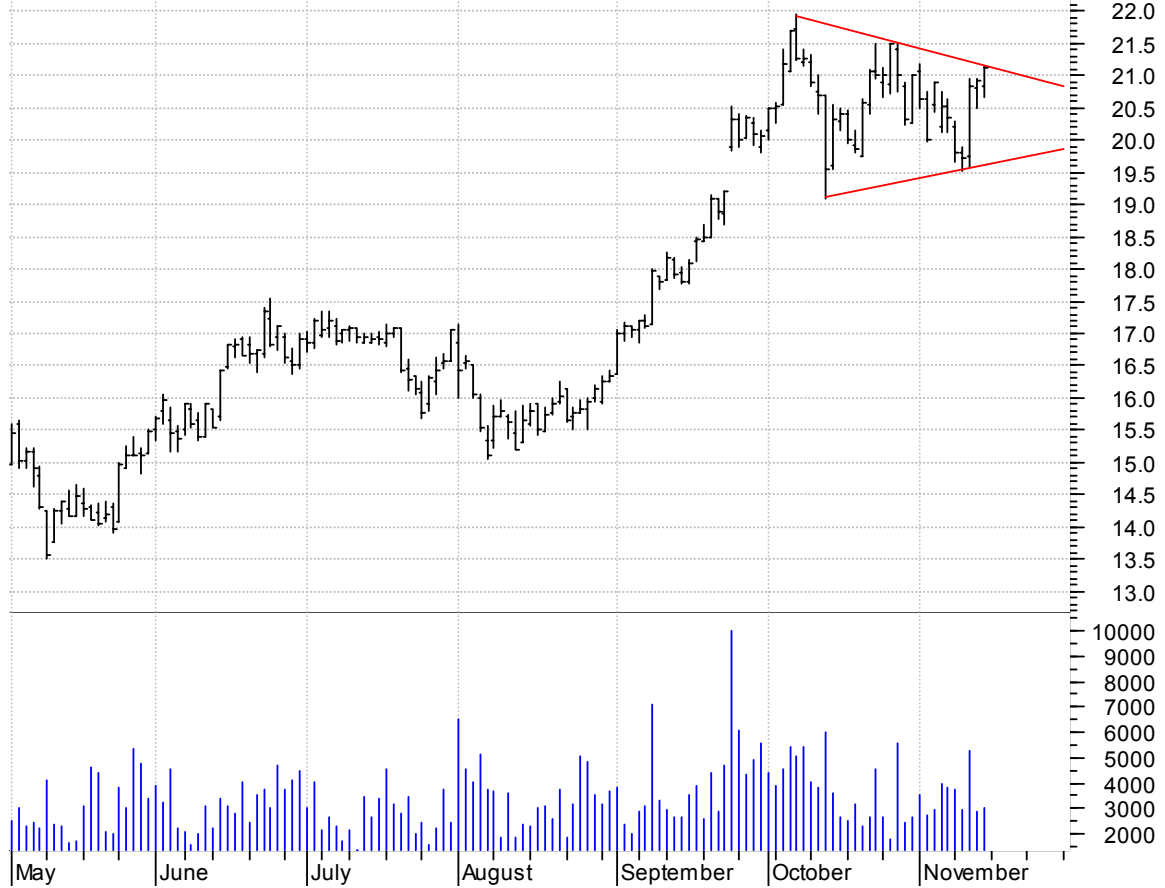
**VLO sloppy symm. tri. (discounting spike high day) / buy on upside brkout on increased volume**

Valero Energy Co (41.6100, 42.3700, 41.1700, 42.2600 +0.7900)



**VPI symm. tri. / buy on upside brkout on increased volume**

Vintage Petroleu (20.8500, 21.1400, 20.6600, 21.1300 +0.2000)



**VRC symm. tri. / buy on upside breakout thru dotted red line on increased volume**

Varco Intl Inc:N (27.6000, 28.2500, 27.5800, 28.0200 +0.4300)



**XXIA symm. tri. preceded by 'pole-like' move / buy on upside breakout on increased volume**

IXIA:OTC (12.6000, 12.8000, 12.3600, 12.7000 +0.0400)



**ZMH symm. tri. / buy on upside brkout on increased volume**



**chartpatterns.com**  
Chart Pattern Analysis for Timing the Markets

[KMatras@aol.com](mailto:KMatras@aol.com)