

AMMD symm. tri. / sell on downside brkout on increased volume

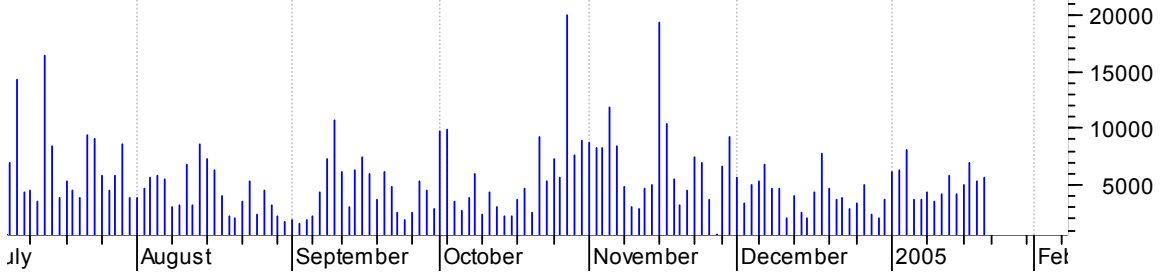


APPX bull pennant / buy on upside brkout on increased volume



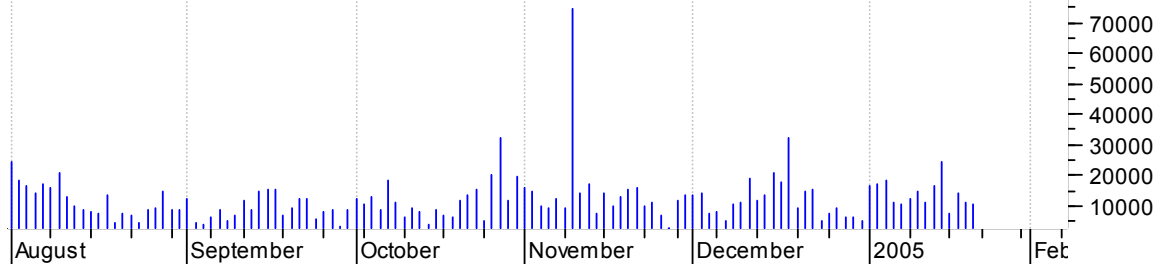
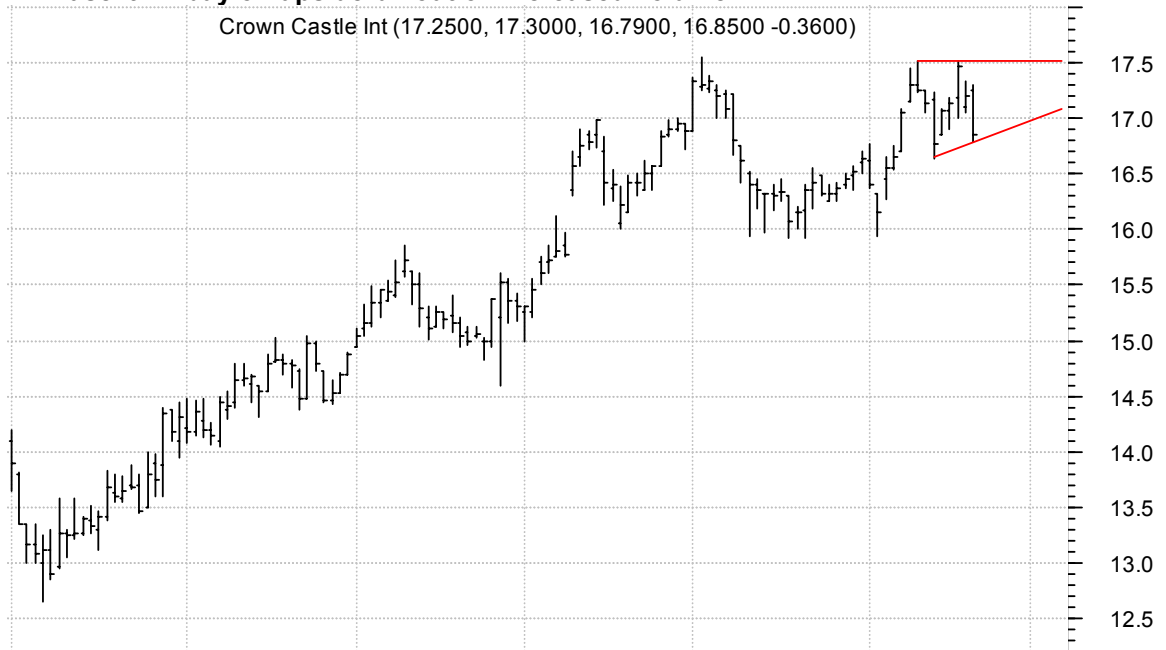
AVID symm. tri. / buy on upside brkout on increased volume

Avid Technology (59.6000, 60.2000, 58.9300, 59.4400 -0.2000)



CCI asc. tri. / buy on upside brkout on increased volume

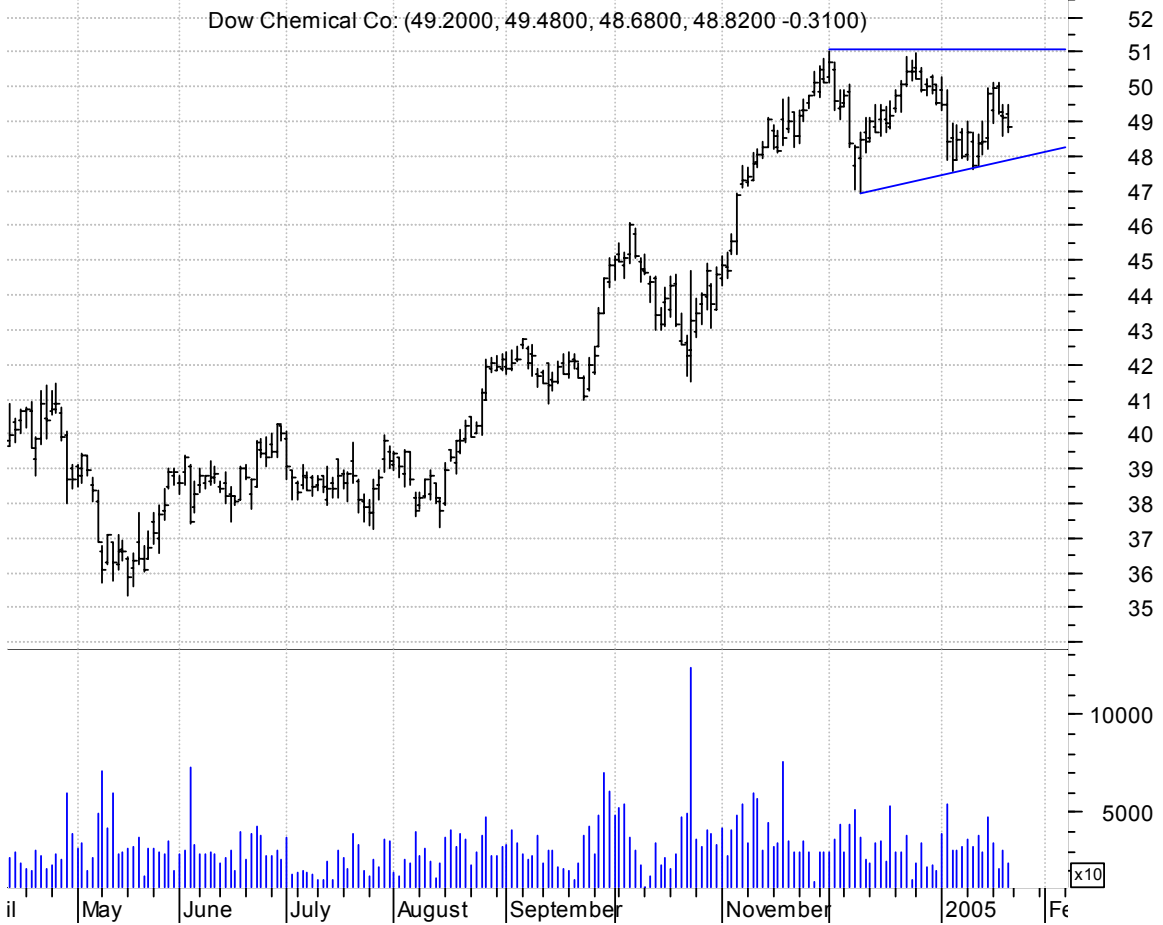
Crown Castle Int (17.2500, 17.3000, 16.7900, 16.8500 -0.3600)



DNYY symm. tri. brkout & retracement / buy on upside brkout thru dotted red line on increased volume



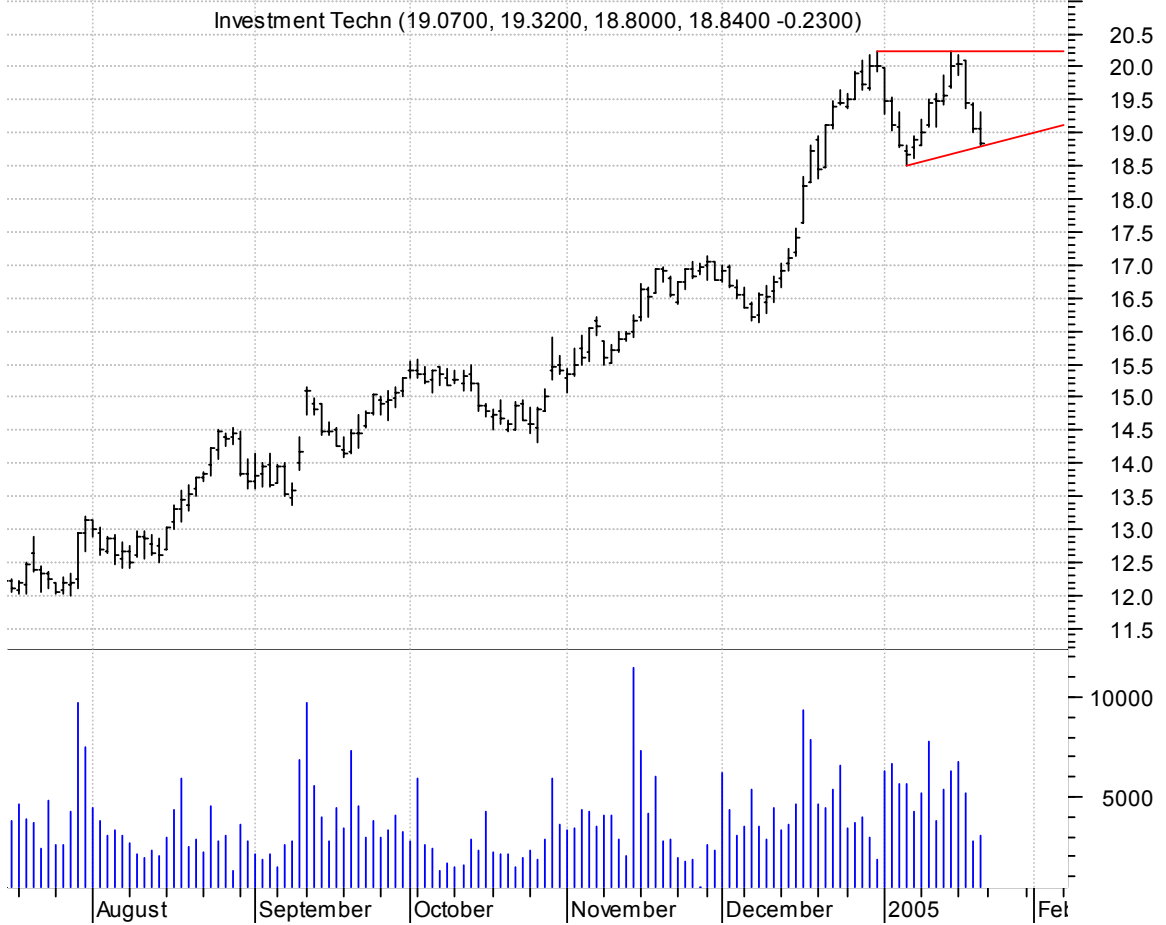
DOW asc. tri. / buy on upside brkout on increased volume



GPN bearish flagging / sell on downside brkout on increased volume



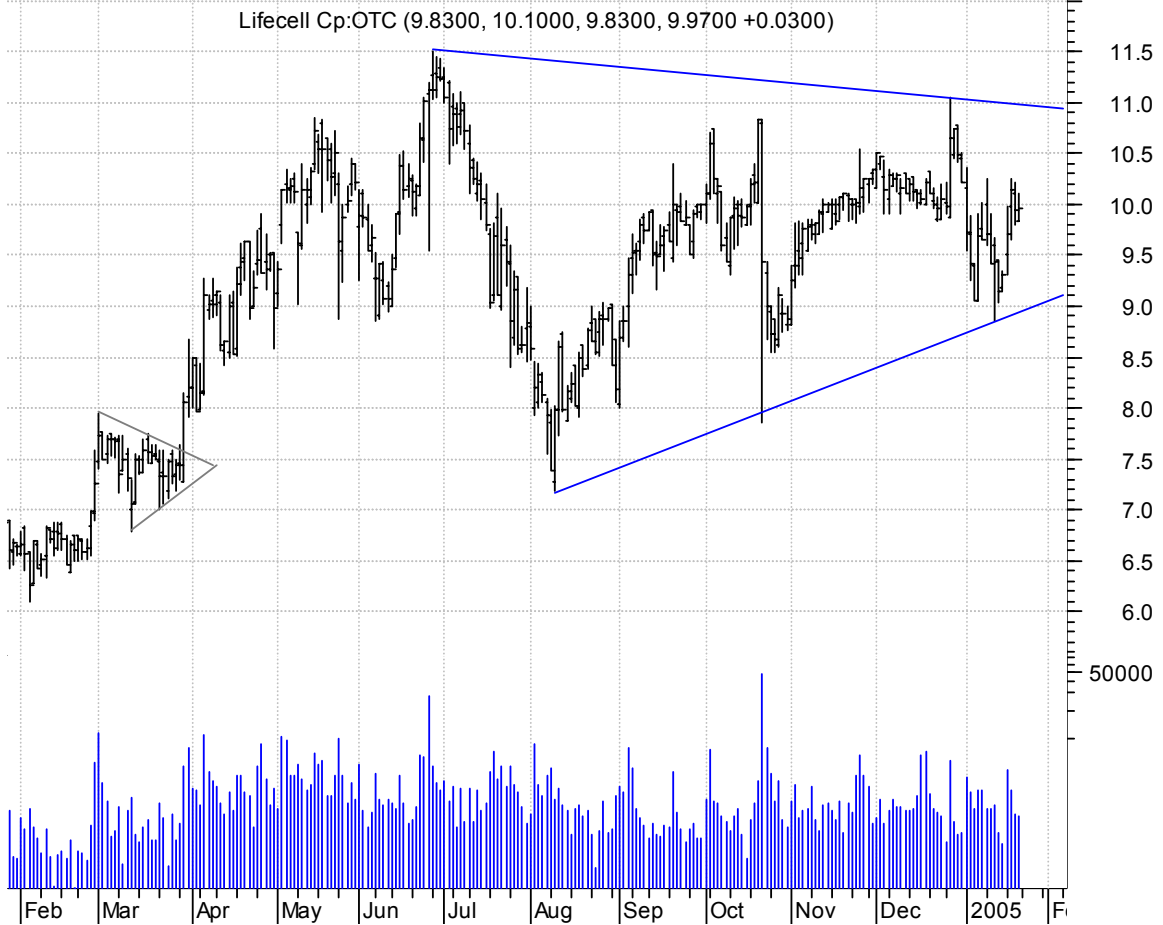
ITG asc. tri. / buy on upside brkout on increased volume



LCAV symm. tri. preceded by 'pole-like' move / buy on upside brkout on increased volume

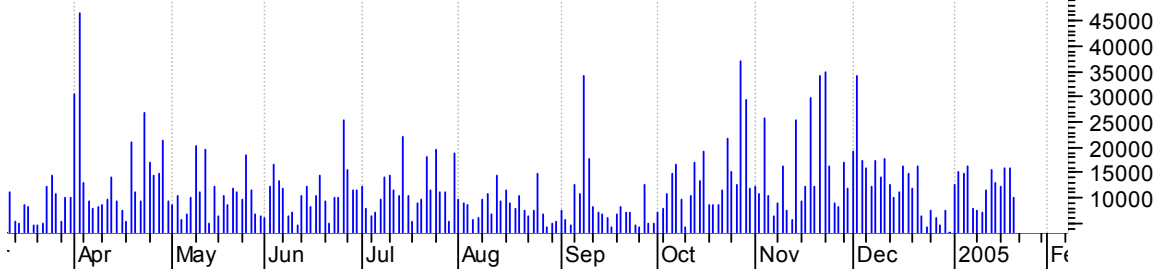
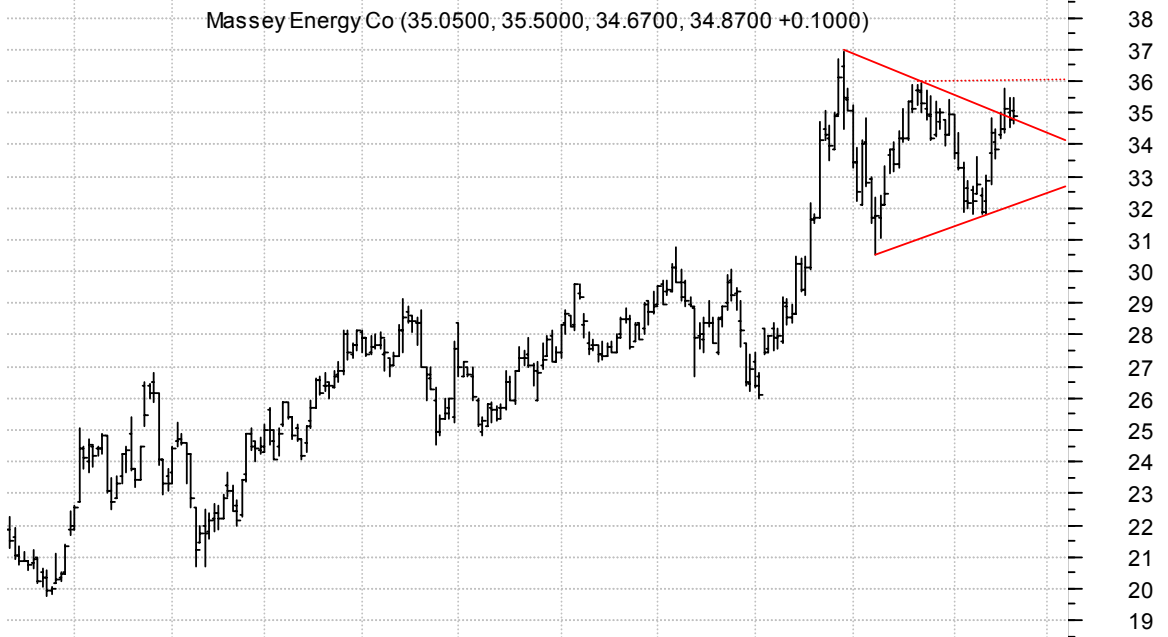


LIFC symm. tri. / buy on upside brkout on increased volume



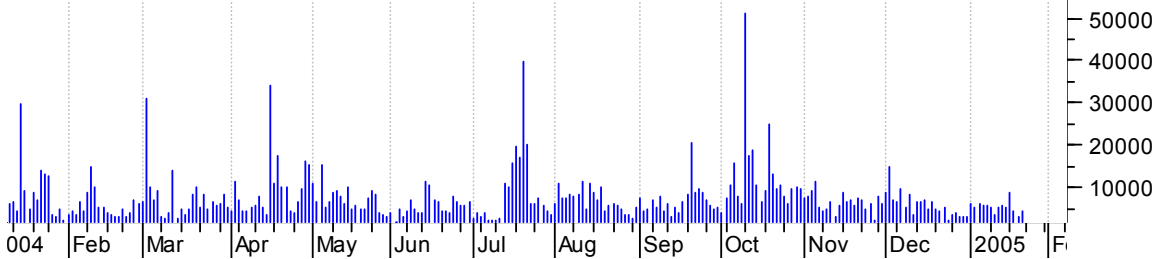
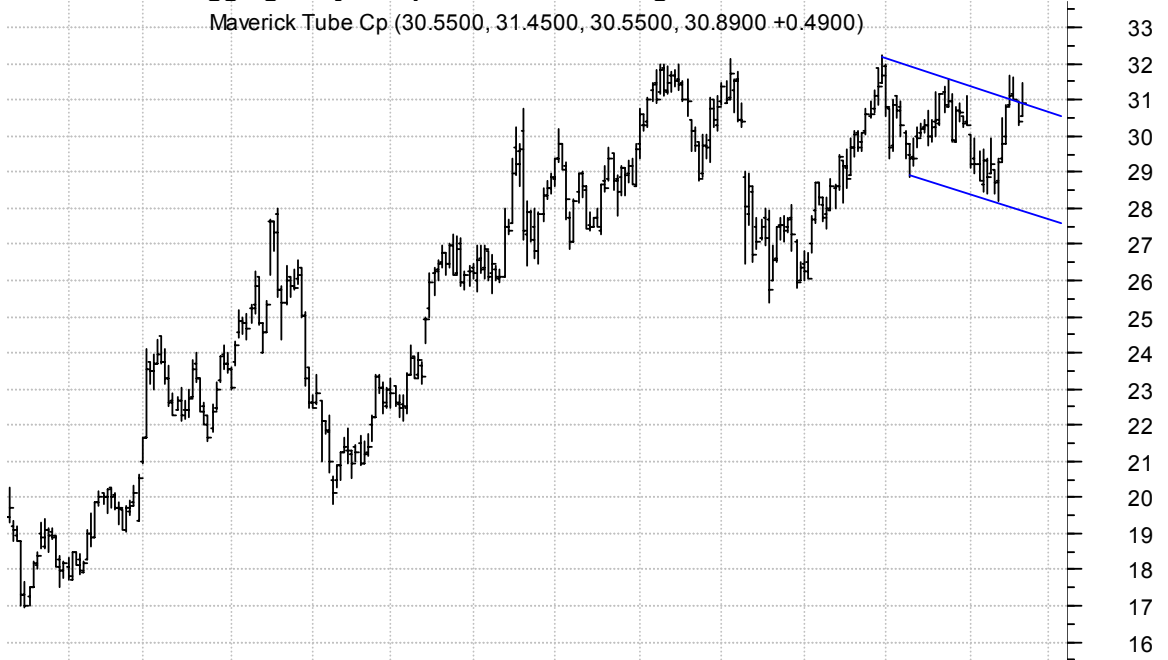
MEE symm. tri. / buy on upside brkout thru dotted red line on increased volume

Massey Energy Co (35.0500, 35.5000, 34.6700, 34.8700 +0.1000)



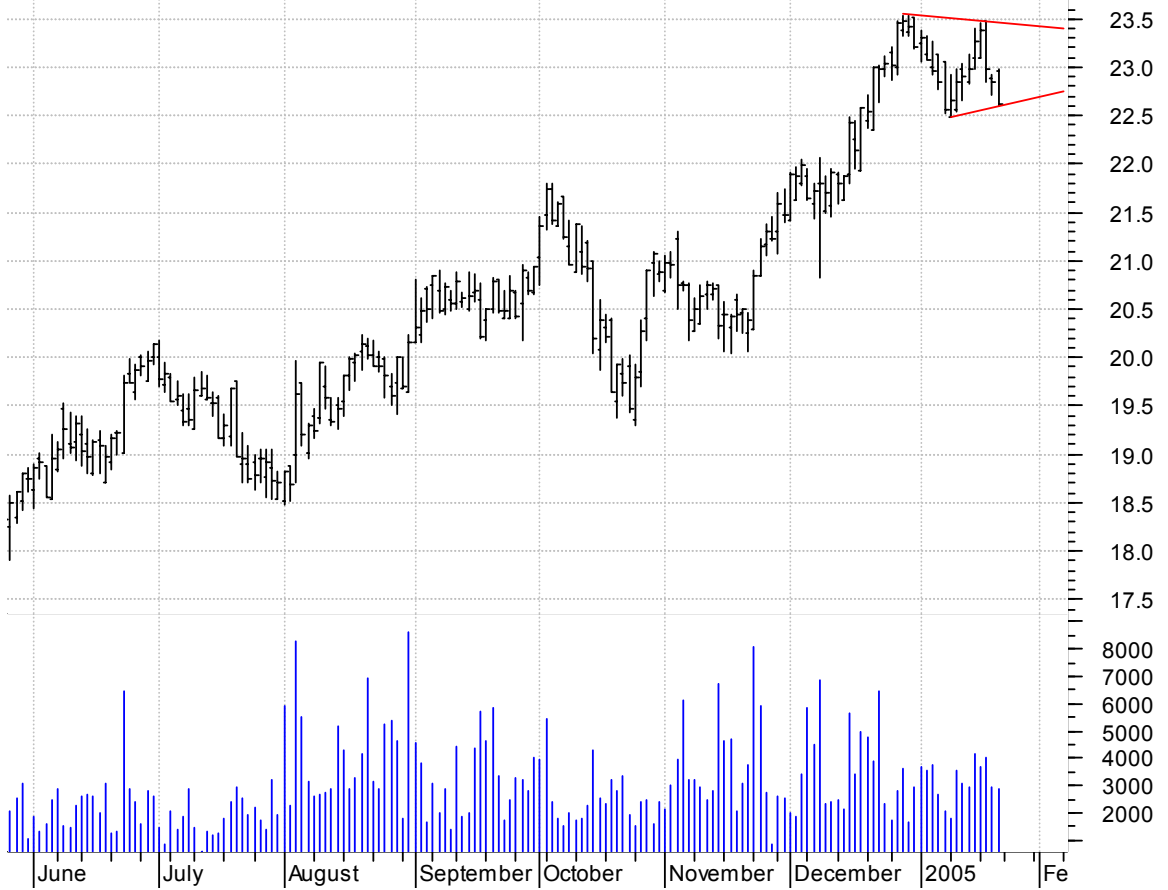
MVK bullish flagging / buy on upside brkout on larger than normal volume

Maverick Tube Cp (30.5500, 31.4500, 30.5500, 30.8900 +0.4900)



OCAS symm. tri. / buy on upside brkout on increased volume

Ohio Casualty Cp (22.9700, 22.9800, 22.5900, 22.6200 -0.2300)

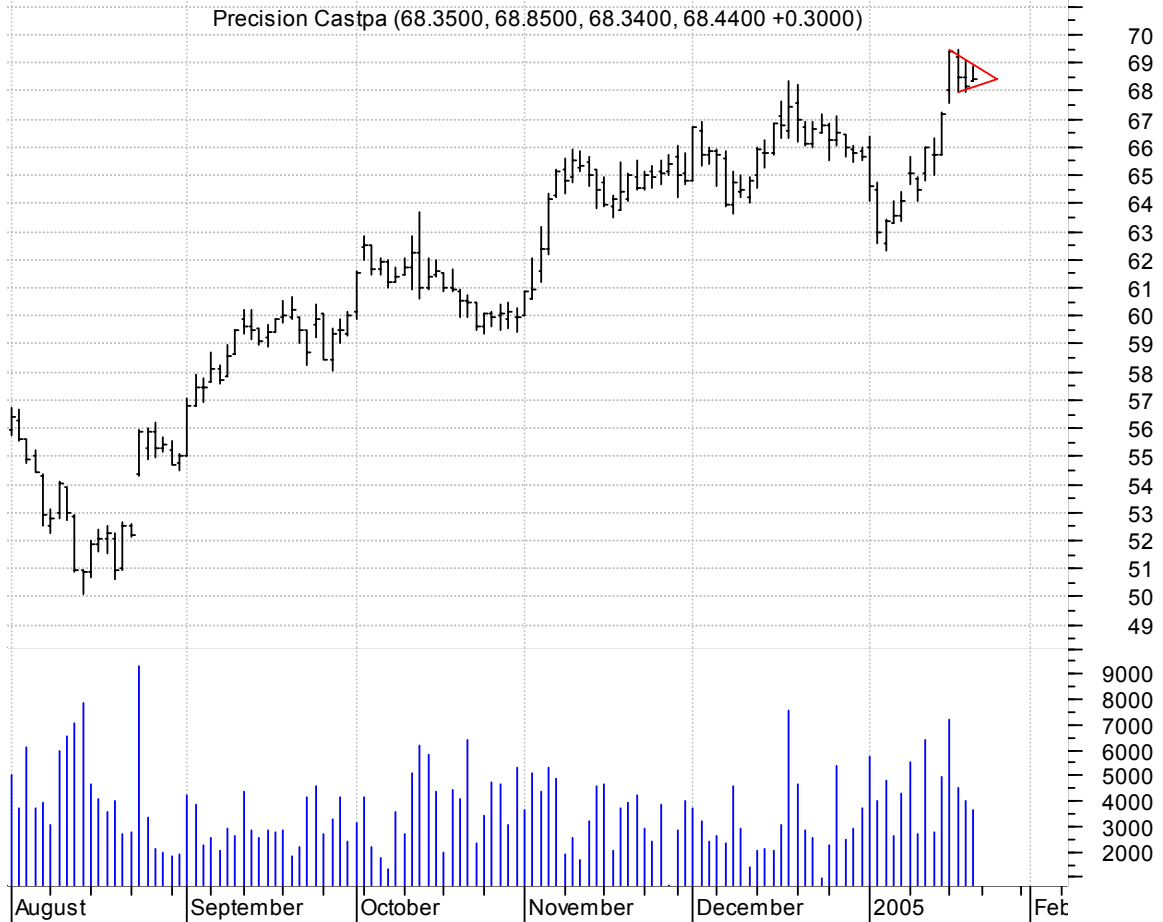


Oil symm. tri. / buy on upside brkout on increased volume

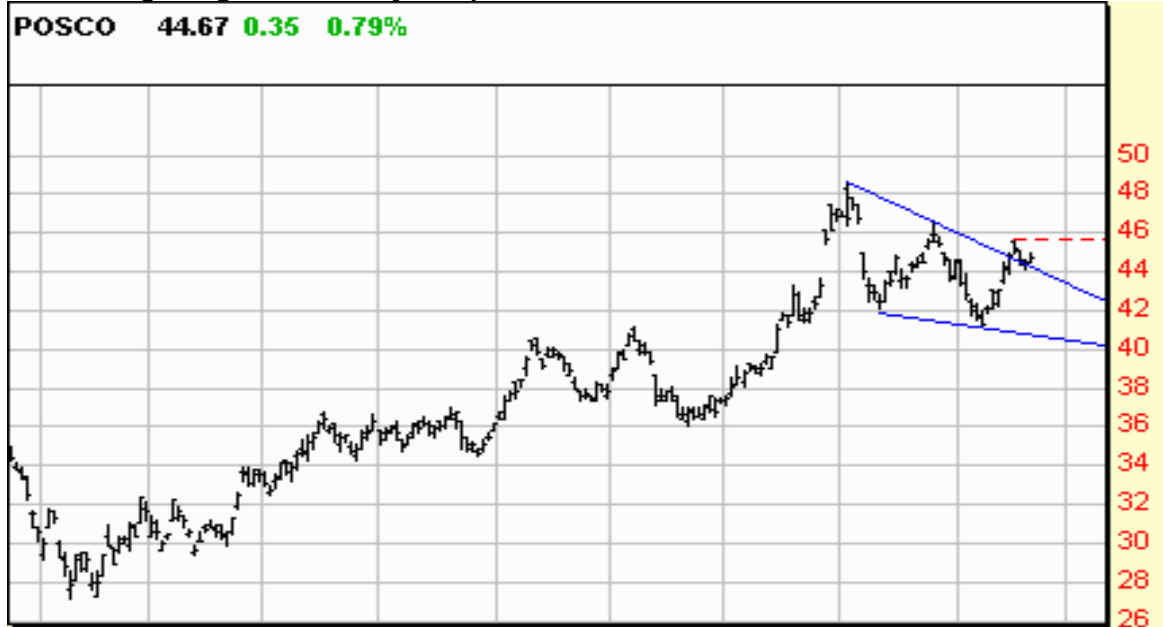
Oceaneering Intl (36.2900, 37.1100, 36.2300, 36.4400 +0.1300)



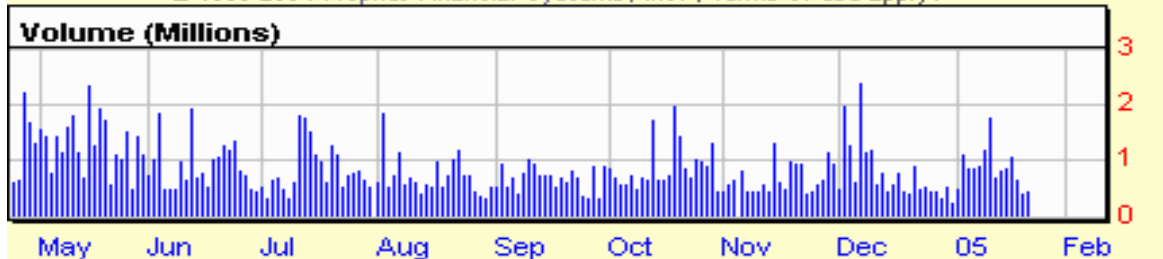
PCP bullish pennant (better seen on an intraday chart) / buy on upside brkout on increased volume



PKX falling wedge brkout / buy on upside continuation thru dotted red line on increased volume



© 1998-2004 Prophet Financial Systems, Inc. | Terms of use apply.



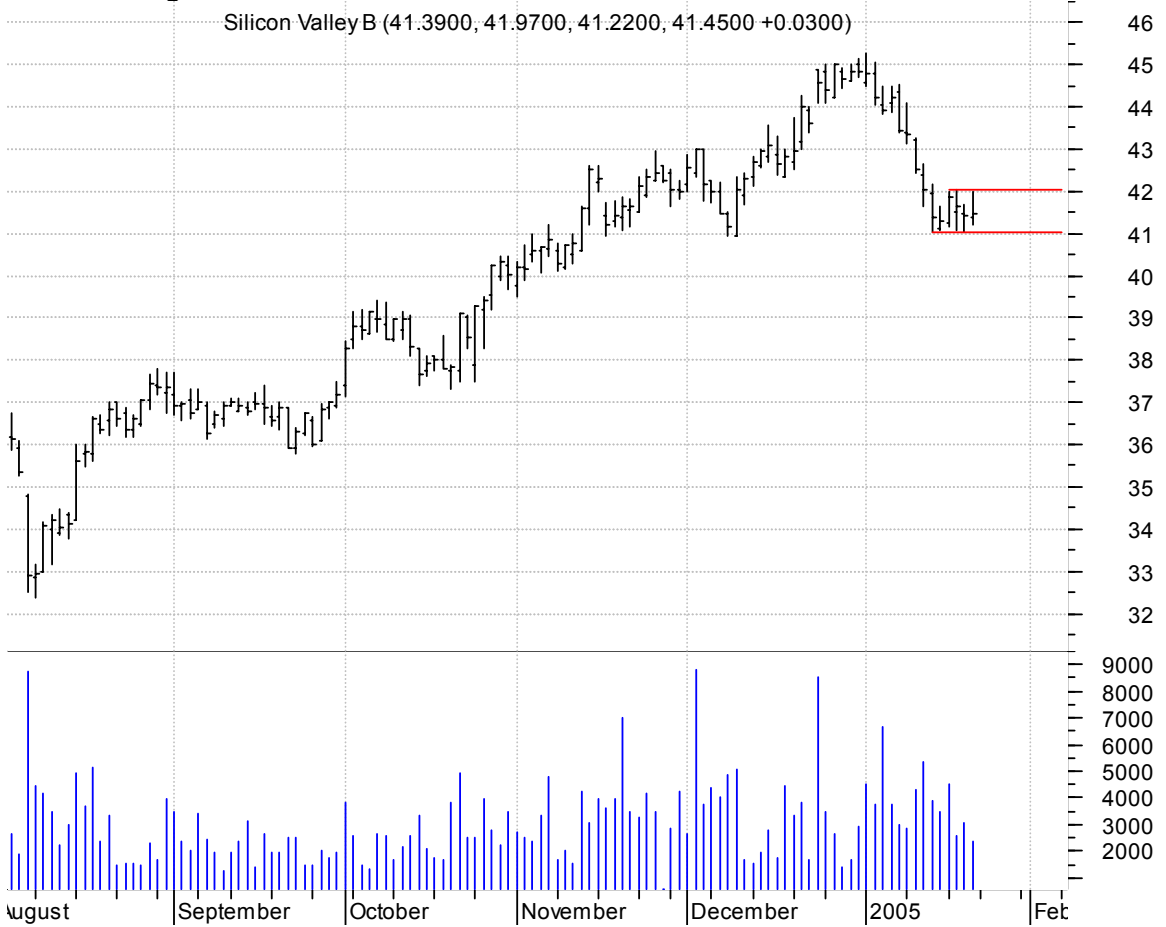
SFNT symm. tri. / buy on upside brkout on increased volume

SafeNet Inc:OTC (35.3100, 35.8000, 34.4000, 34.7300 -0.4200)



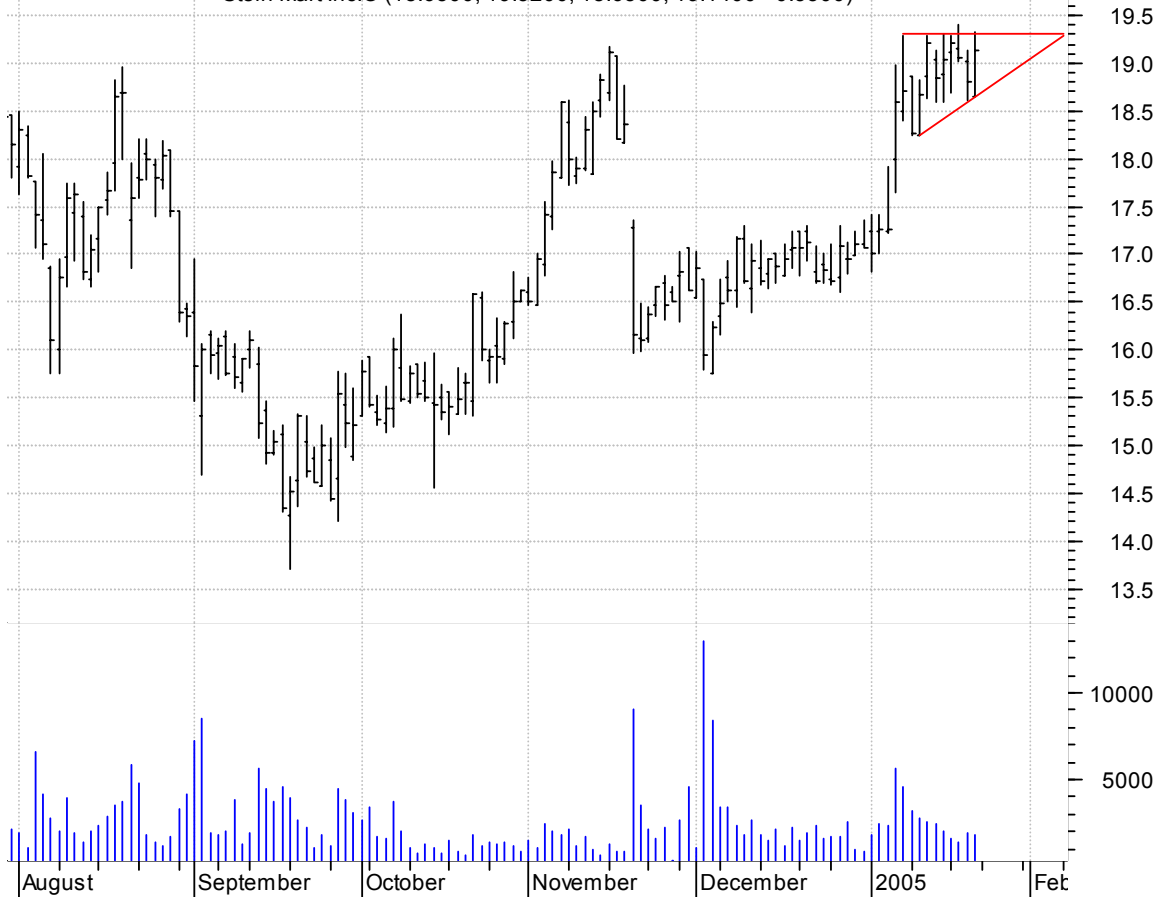
SIVB rectangle / sell on downside brkout on increased volume

Silicon Valley B (41.3900, 41.9700, 41.2200, 41.4500 +0.0300)



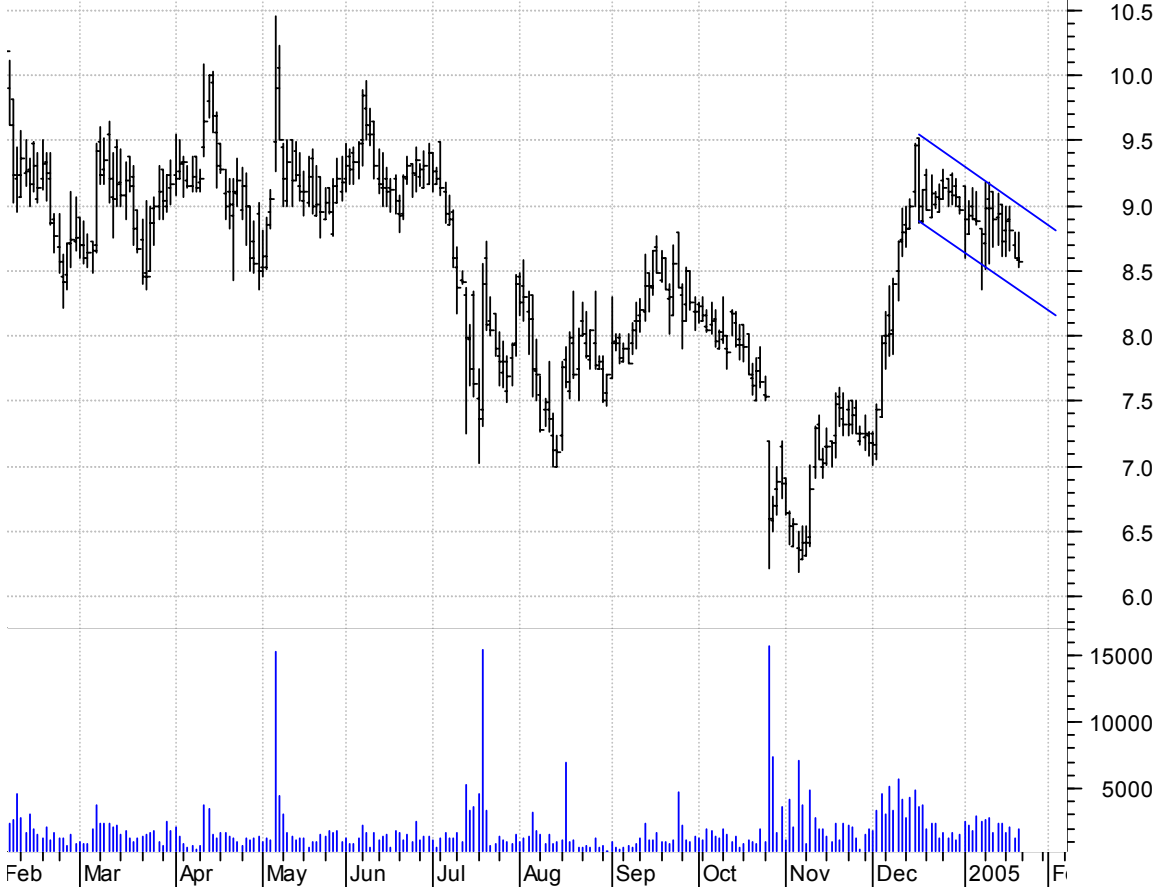
SMRT asc. tri. preceded by 'pole-like' move / by on upside brkout on increased volume

Stein Mart Inc:O (18.6500, 19.3200, 18.6500, 19.1400 +0.3300)



TPTH sloppy bullish flagging / buy on upside brkout on increased volume

Tripath Imaging (8.5800, 8.7900, 8.5300, 8.5700 -0.0300)



WCC sloppy asc. tri. / buy on upside breakout on increased volume

Wesco Intl inc:N (30.5500, 31.3500, 30.4800, 30.7800 +0.1700)



WMB symm. tri. preceded by 'pole-like' move / buy on upside breakout on increased volume

Williams Cos:NYS (15.8700, 16.0400, 15.8000, 15.8900 +0.2000)



XPRSA symm. tri. / buy on upside brkout on increased volume

US Xpress Enterp (27.5800, 28.9400, 27.2800, 28.0300 +0.3600)



chartpatterns.com

Chart Pattern Analysis for Timing the Markets

KMatras@aol.com