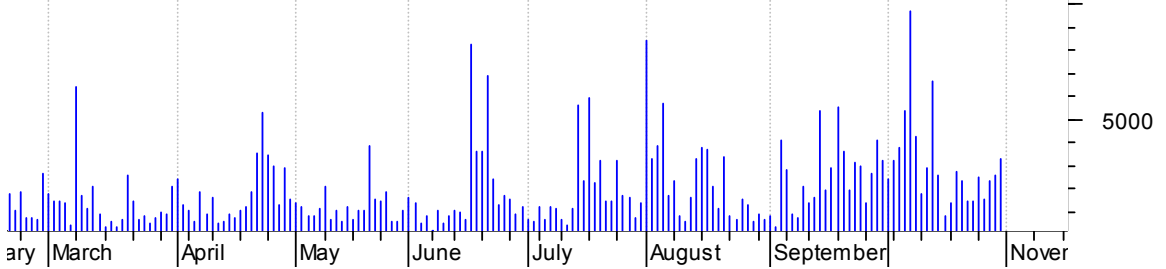


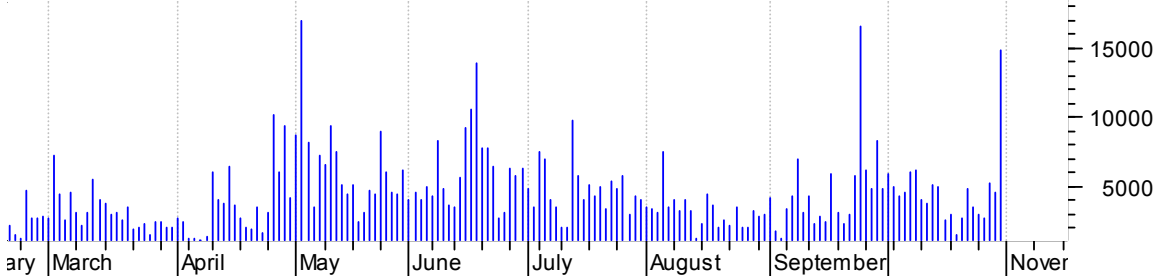
ATPG symm. tri. / buy on upside brkout on increased volume

ATP OIL & GAS CP (13.5100, 13.6500, 12.7500, 13.3000 +0.0500)



CDIS bullish flagging / buy on upside brkout on increased volume

Cal Dive Intl In (35.7200, 36.7100, 34.8000, 35.4100 -0.4600)



CNCT sloppy rectangle / buy on upside brkout on increased volume

Connectics Corp: (26.7000, 27.1200, 26.7000, 26.8800 +0.2400)



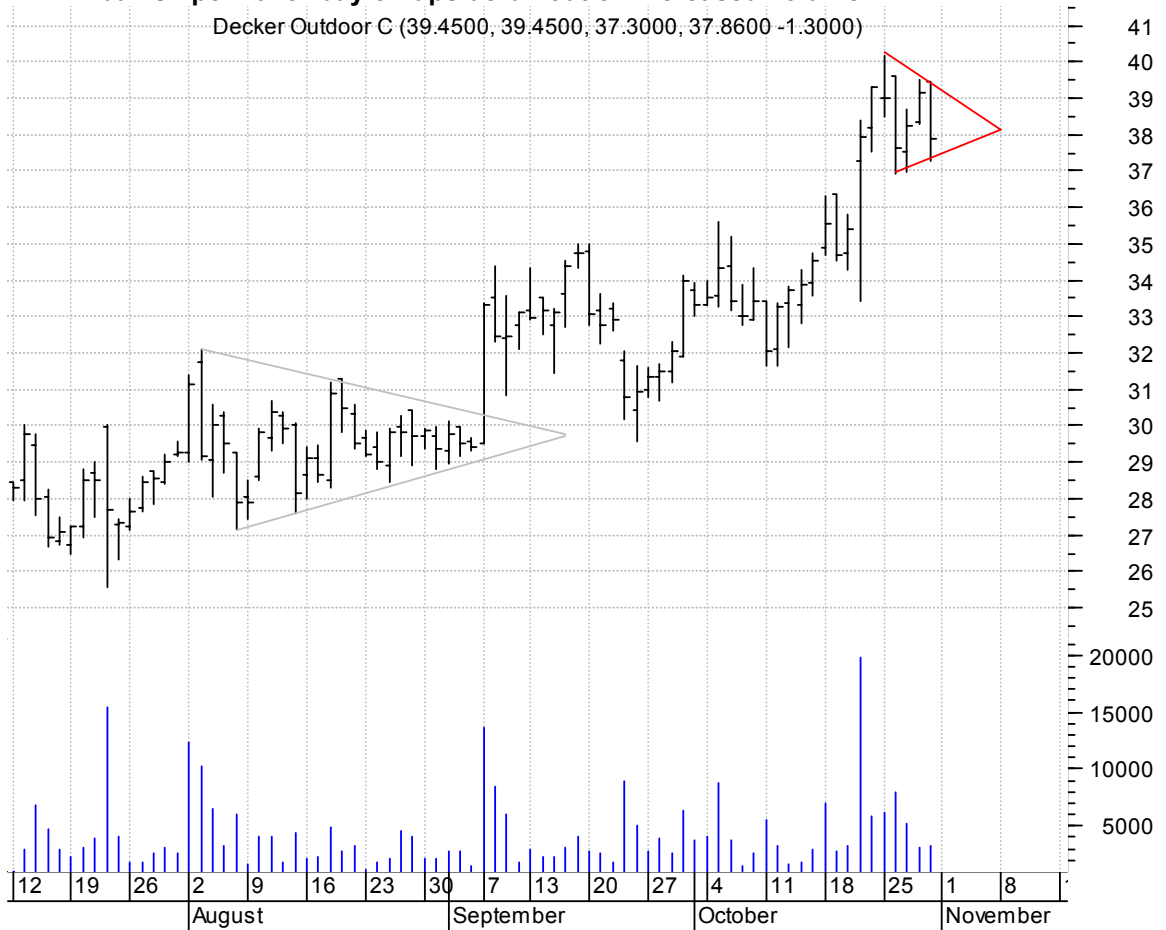
CVD symm. tri. / buy on upside brkout on increased volume

Covance Inc:NYSE (39.4700, 39.7500, 38.7900, 39.7200 +0.2900)



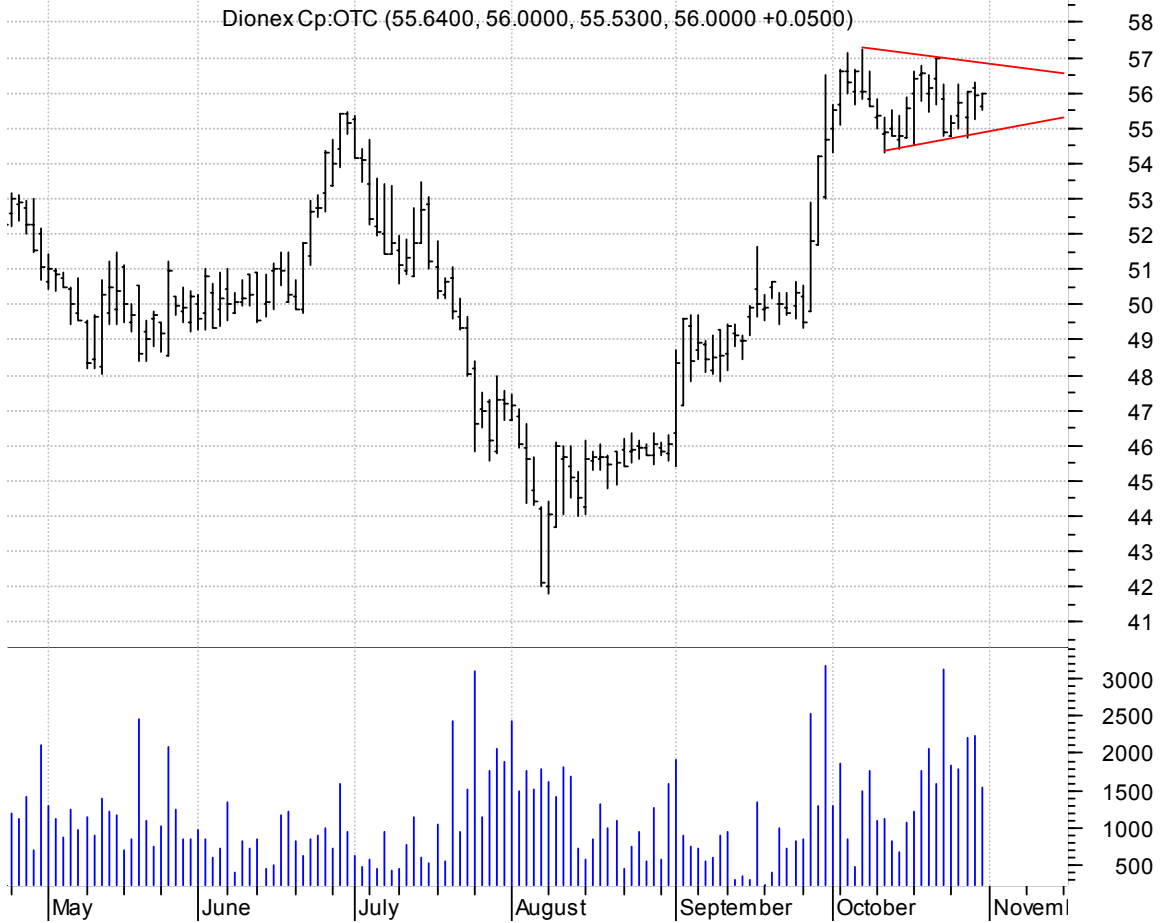
DECK bullish pennant / buy on upside breakout on increased volume

Decker Outdoor C (39.4500, 39.4500, 37.3000, 37.8600 -1.3000)



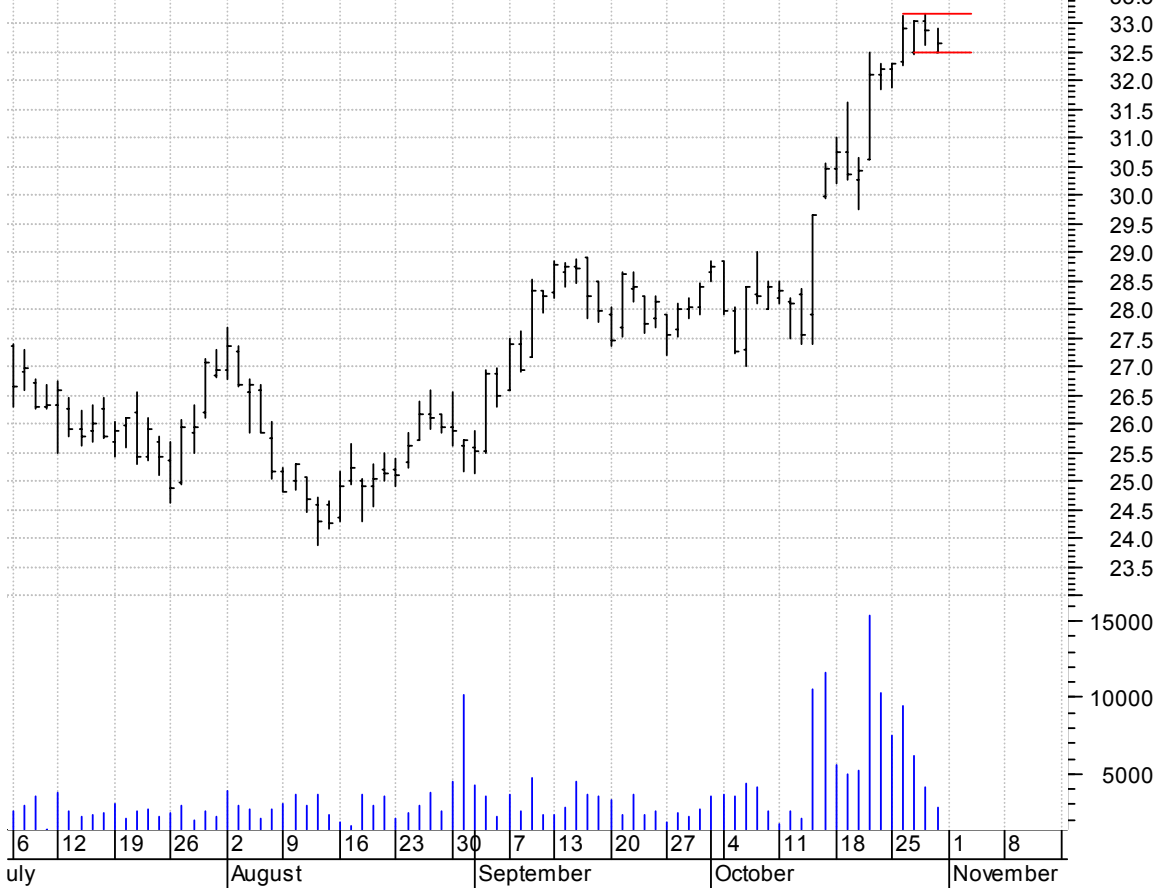
DNEX symm. tri. preceded by 'pole-like' move / buy on upside breakout on increased volume

Dionex Cp:OTC (55.6400, 56.0000, 55.5300, 56.0000 +0.0500)



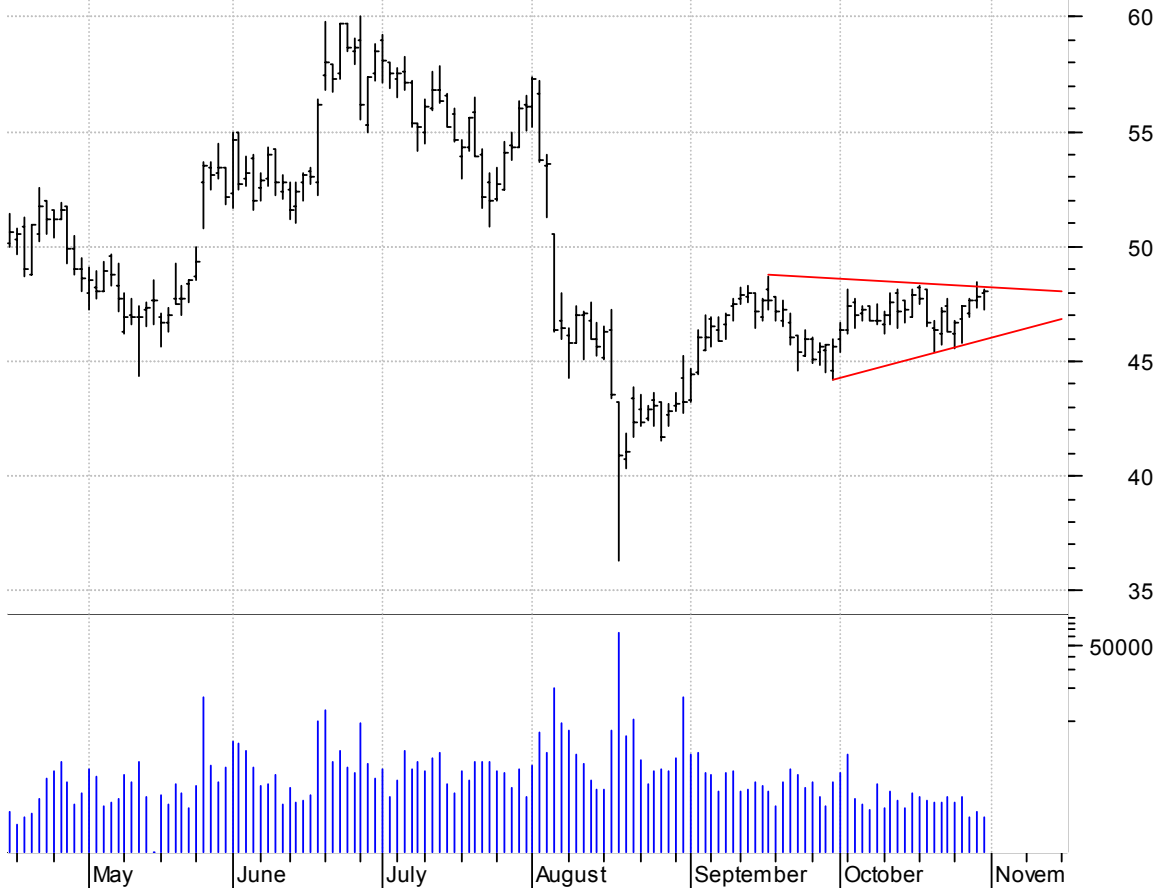
DY rectangle preceded by 'pole-like' move / buy on upside brkout on increased volume

Dycom Industries (32.5000, 32.9000, 32.5000, 32.6500 -0.2200)



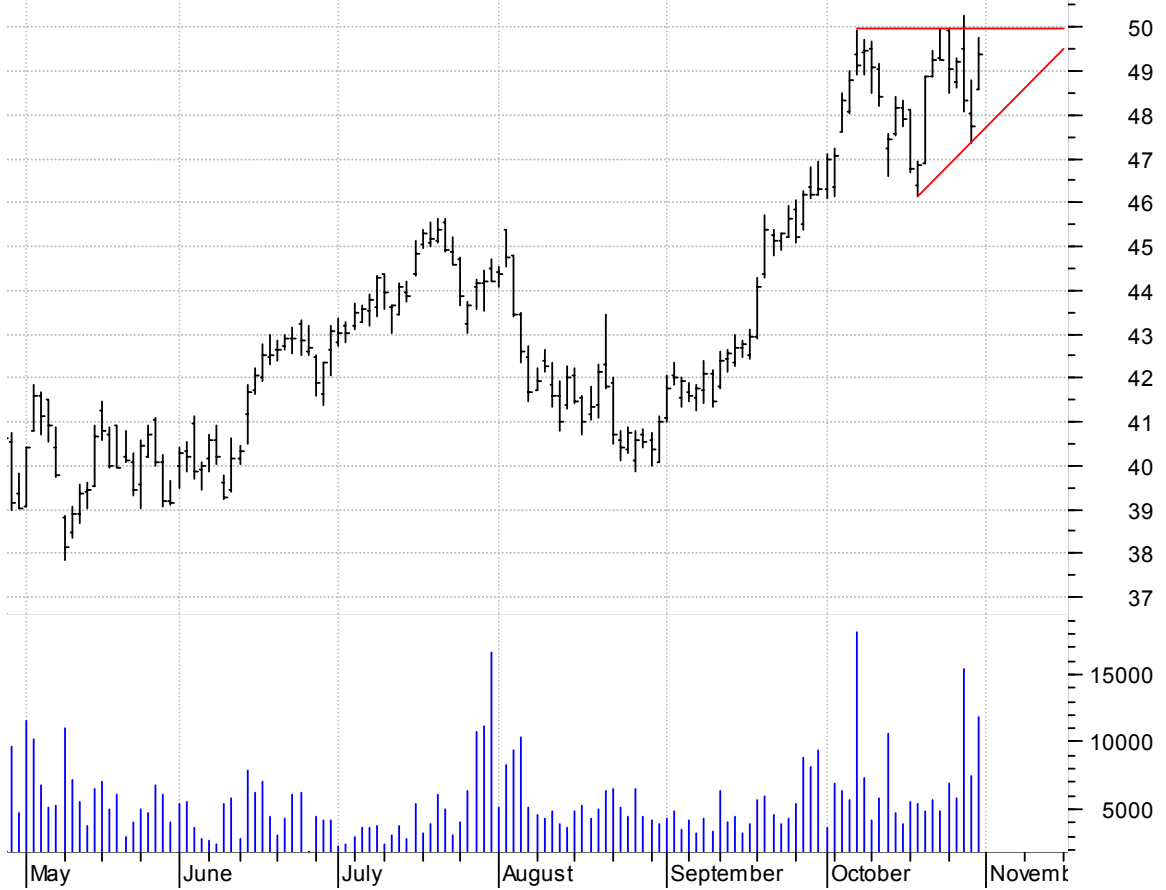
EASI symm. tri. / buy on upside brkout on increased volume

Engineered Suppo (47.9600, 48.1200, 47.2900, 48.0400 +0.2400)



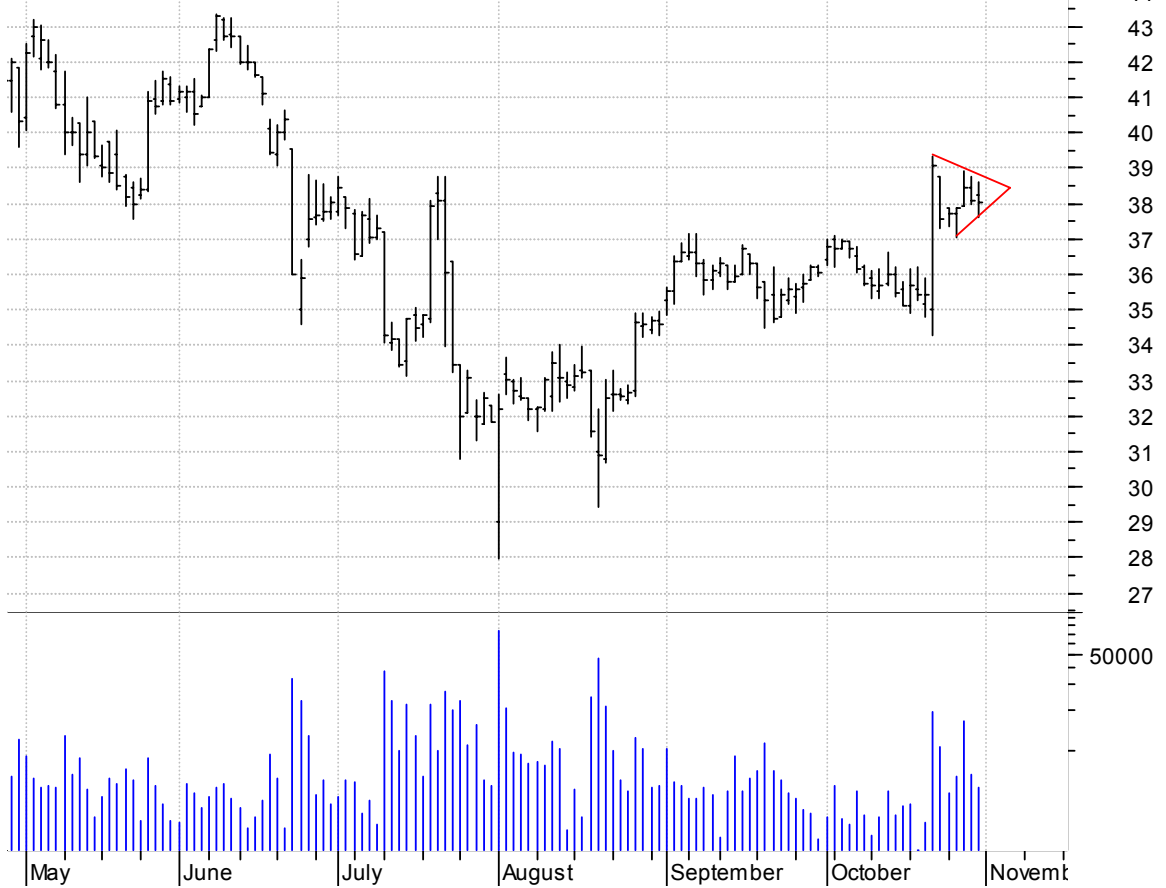
ECA asc. tri. preceded by 'pole-like' move / buy on upside brkout on increased volume

ENCANA CP:NYSE (48.6000, 49.7600, 48.6000, 49.4000 +1.6800)



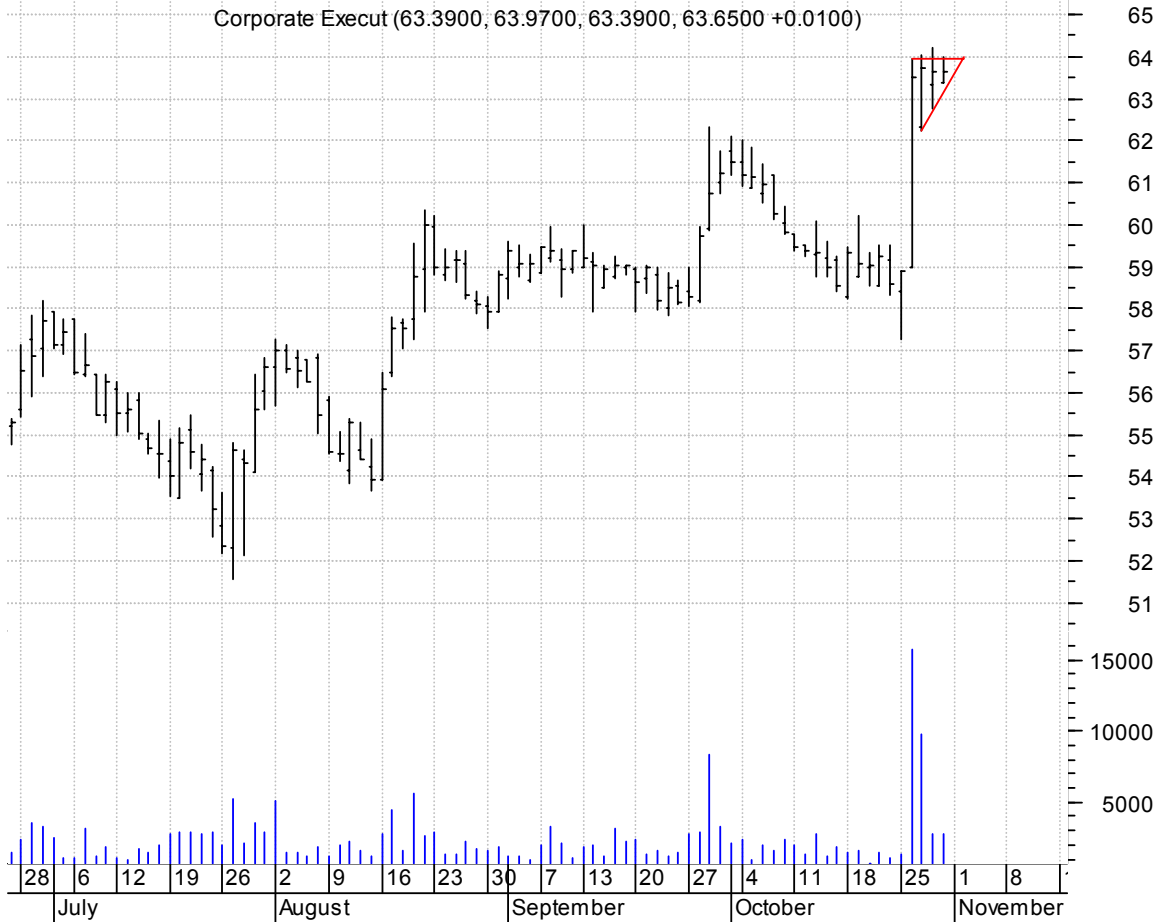
ESI bull pennant / buy on upside brkout on increased volume

ITT Educational (38.2500, 38.6000, 37.6200, 38.0100 -0.0600)



EXBD asc. tri. preceded by 'pole-like' move / buy on upside brkout on increased volume

Corporate Execut (63.3900, 63.9700, 63.3900, 63.6500 +0.0100)



GMR symm. tri. / buy on upside brkout on increased volume

GENERAL MARITIME (36.9300, 38.1200, 36.8300, 38.0000 +1.1700)



HPC falling wedge preceded by 'pole-like' move / buy on upside breakout on increased volume



KRON bullish flag / buy on upside breakout on increased volume



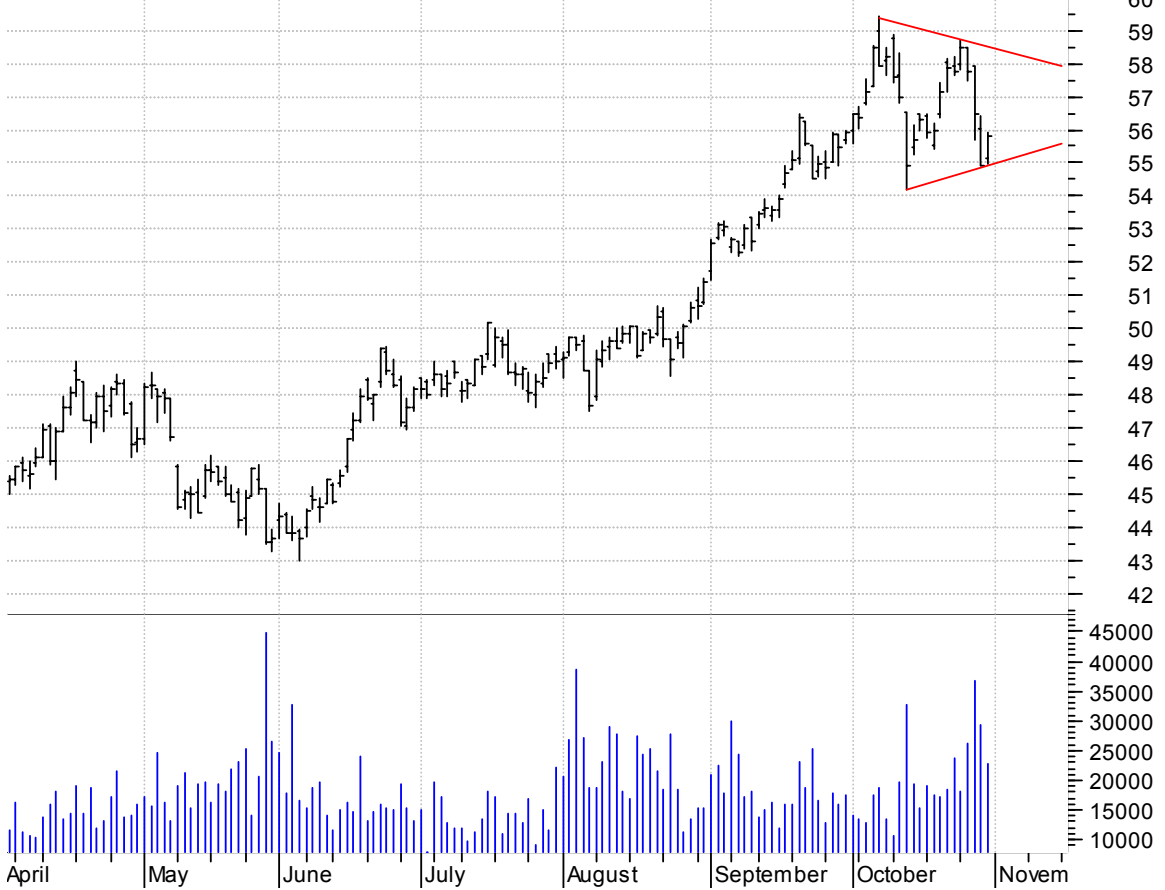
NTAP falling wedge / buy on upside breakout thru dotted red line on increased volume

Network Appliance (23.8000, 24.5000, 23.7700, 24.4700 +0.4500)



OXY symm. tri. / buy on upside breakout on increased volume

Occidental Petro (55.1600, 55.9300, 54.9700, 55.8300 +0.9200)



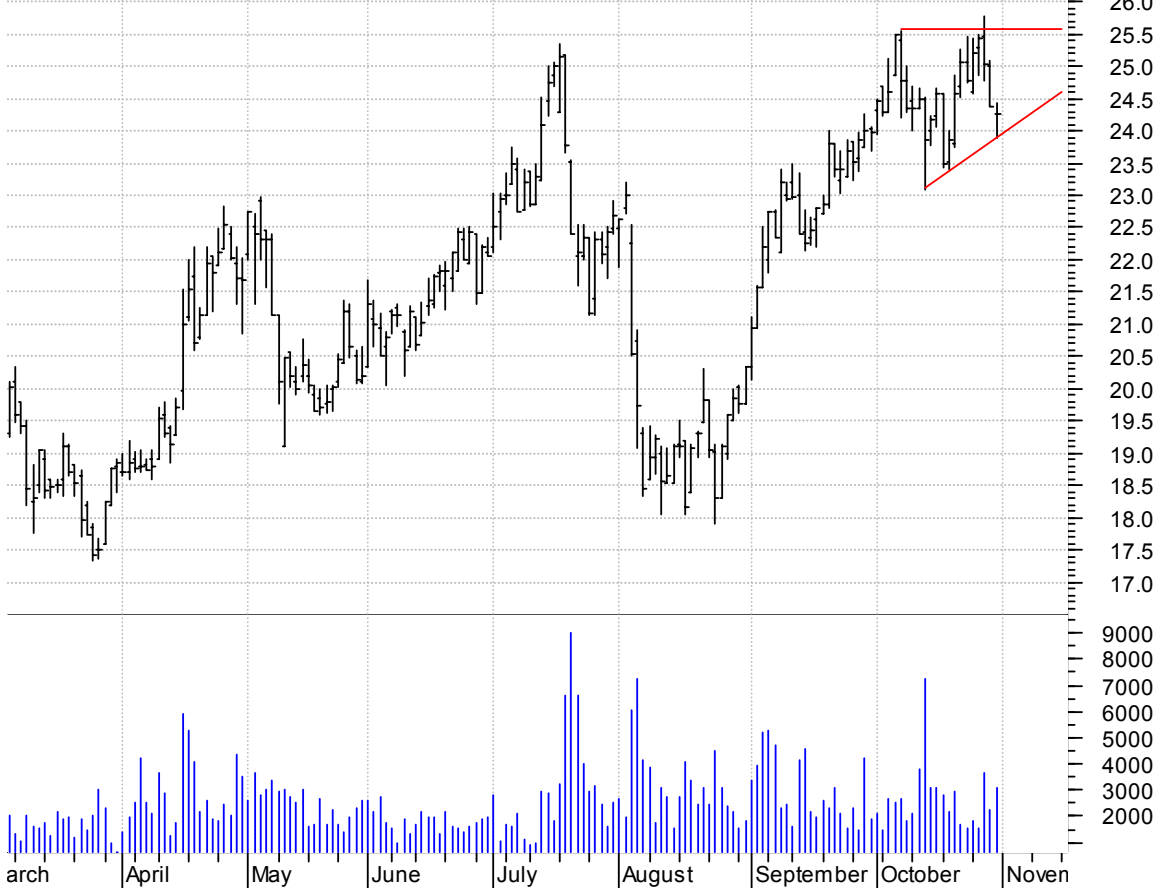
PCO symm. tri. / buy on upside breakout on increased volume

PREMCOR INC:NYSE (39.1500, 39.7100, 38.6000, 39.0400 -0.0400)



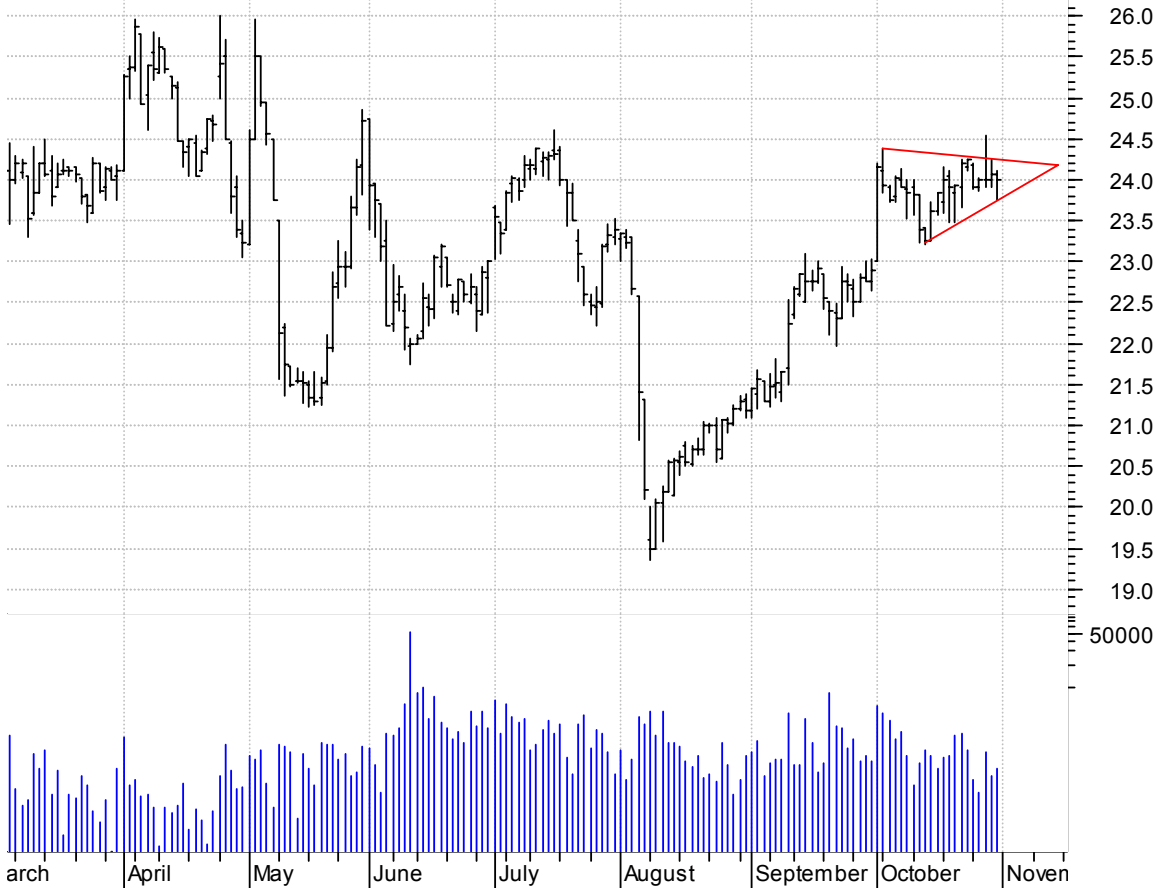
SFY sloppy asc. tri. / buy on upside breakout on increased volume

Swift Energy:NYS (24.2500, 24.4200, 23.8800, 24.2500 -0.1300)



SIR sloppy symm. tri. / buy on upside breakout on increased volume

SIRVA INC:NYSE (24.0600, 24.1200, 23.7600, 24.0000 -0.0600)



SOSA bullish flagging / buy on upside breakout on increased volume

Stolt Offshore S (4.8000, 5.1400, 4.7500, 5.0800 +0.1200)



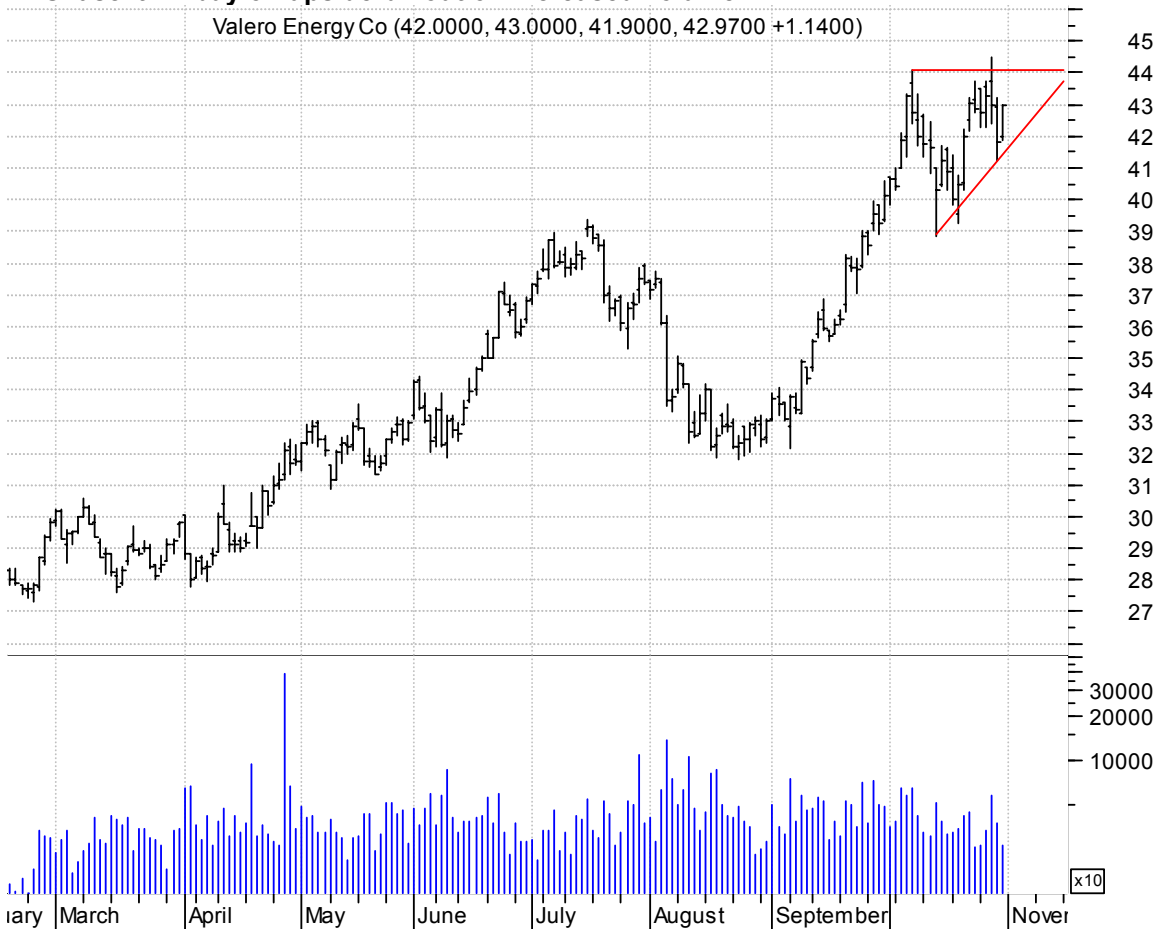
SWN bullish flagging / buy on upside breakout on increased volume

Southwestern Ene (45.6700, 46.4000, 45.4000, 45.9400 +0.2000)



VLO asc. tri. / buy on upside breakout on increased volume

Valero Energy Co (42.0000, 43.0000, 41.9000, 42.9700 +1.1400)



VPI symm. tri. preceded by 'pole-like' move / buy on upside brkout on increased volume



ZGEN bullish flagging / buy on upside brkout thru dotted red line on increased volume



chartpatterns.com
Chart Pattern Analysis for Timing the Markets

KMatras@aol.com