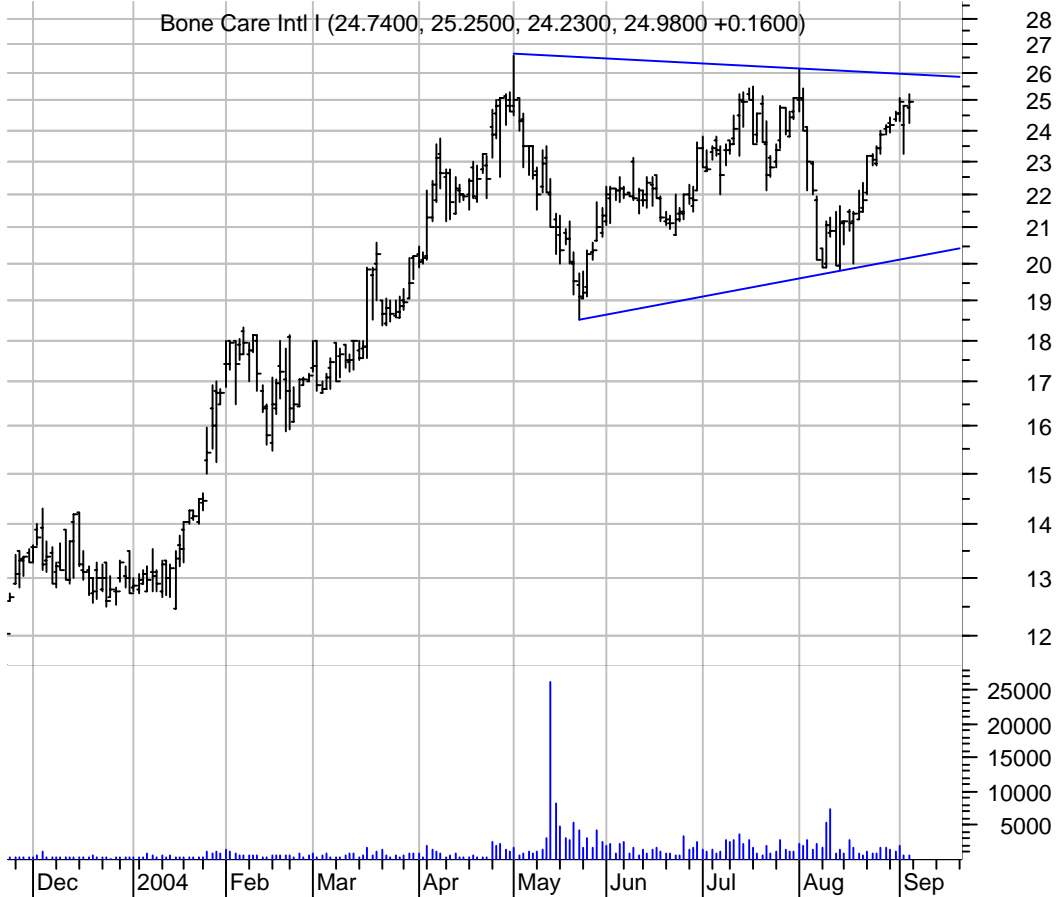


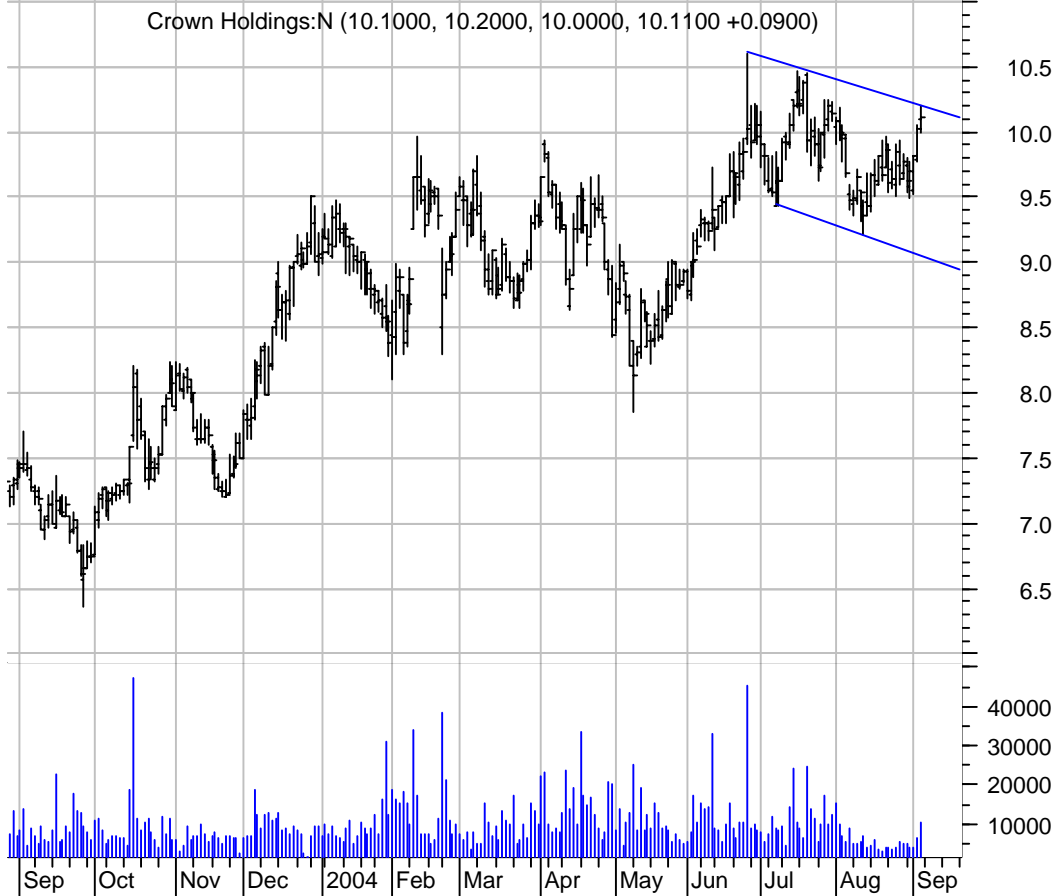
**AACB bullish flag / buy on upside brkout on increased volume**



**BCII symm. tri. / buy on upside brkout on increased volume**



**CCK bullish flag / buy on upside brkout on increased volume**



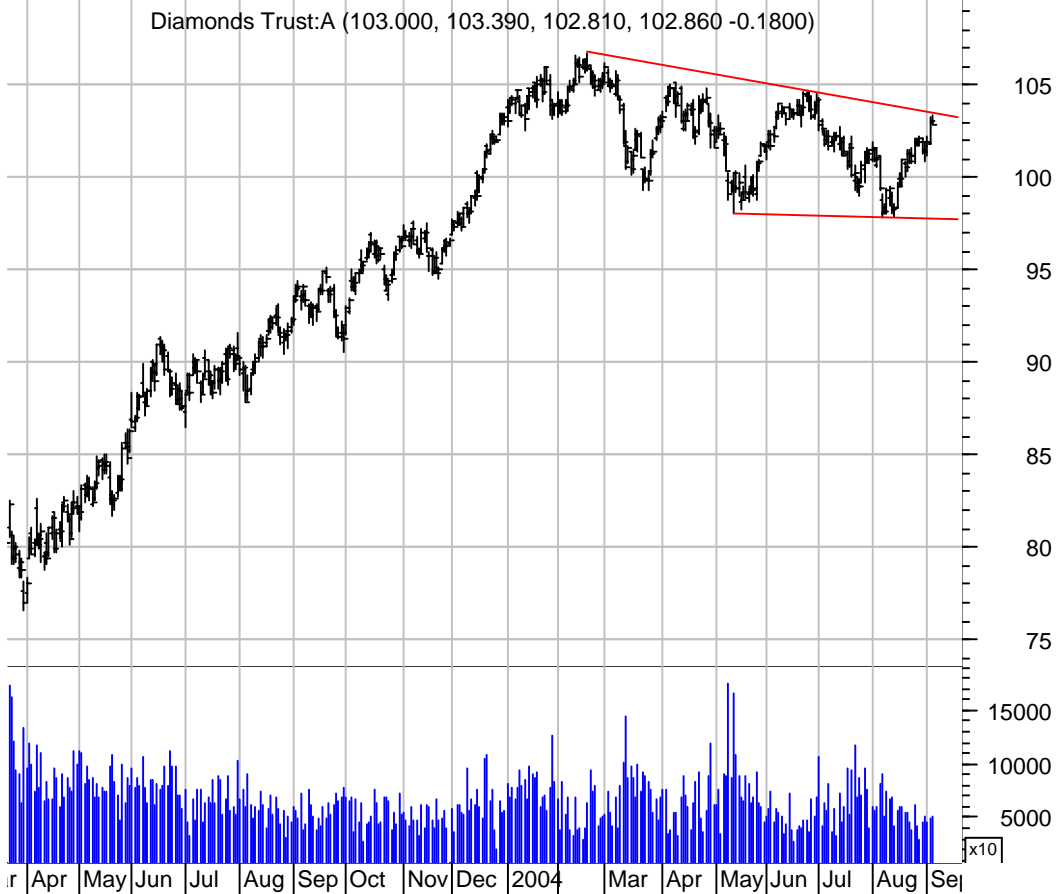
**CENX symm. tri. / buy on upside brkout on increased volume**



**CSL desc. tri. / sell on downside brkout on increased volume**



**DIA slight falling wedge / buy on upside brkout on increased volume**



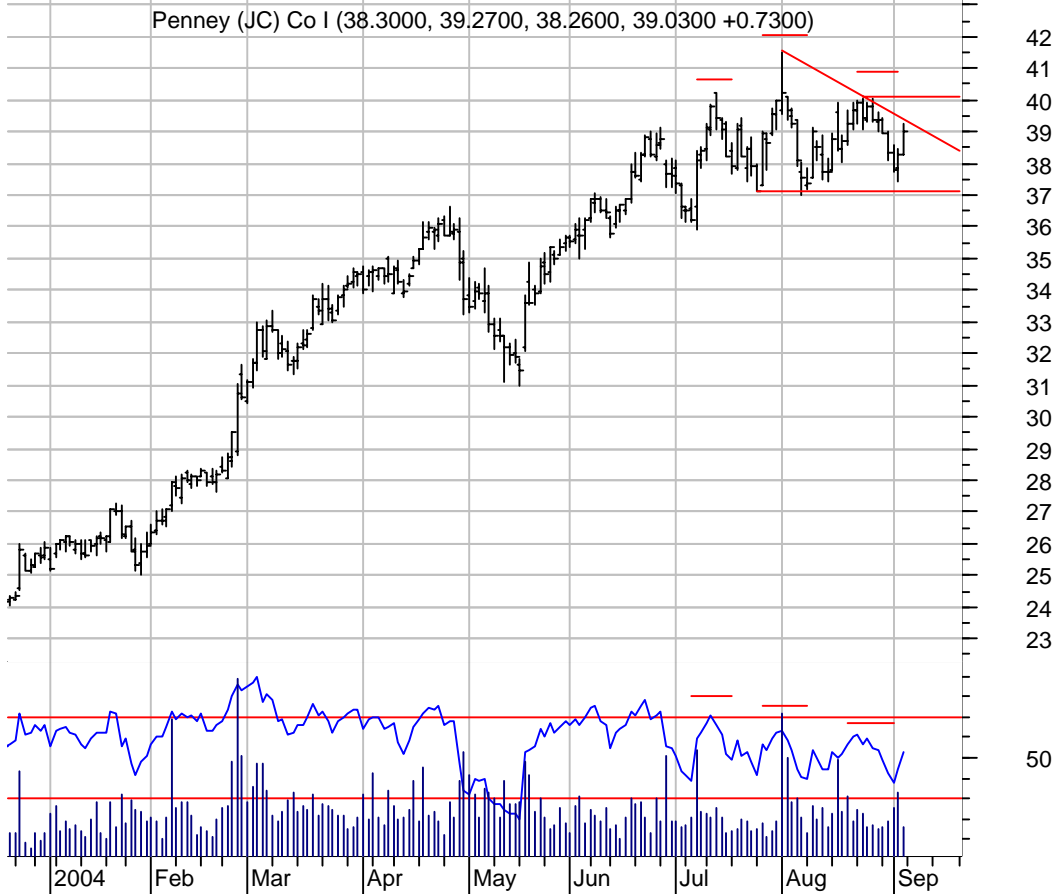
**DITC bull pennant / buy on upside brkout on increased volume**



**FOSL asc. tri. preceded by 'pole-like' move / buy on upside brkout on increased volume**



**JCP h. & sh. / 1) sell on downside brkout on increased volume or  
 2) buy on h. & sh. 'failure' (i.e., upside brkout thru dotted red line) on increased volume**

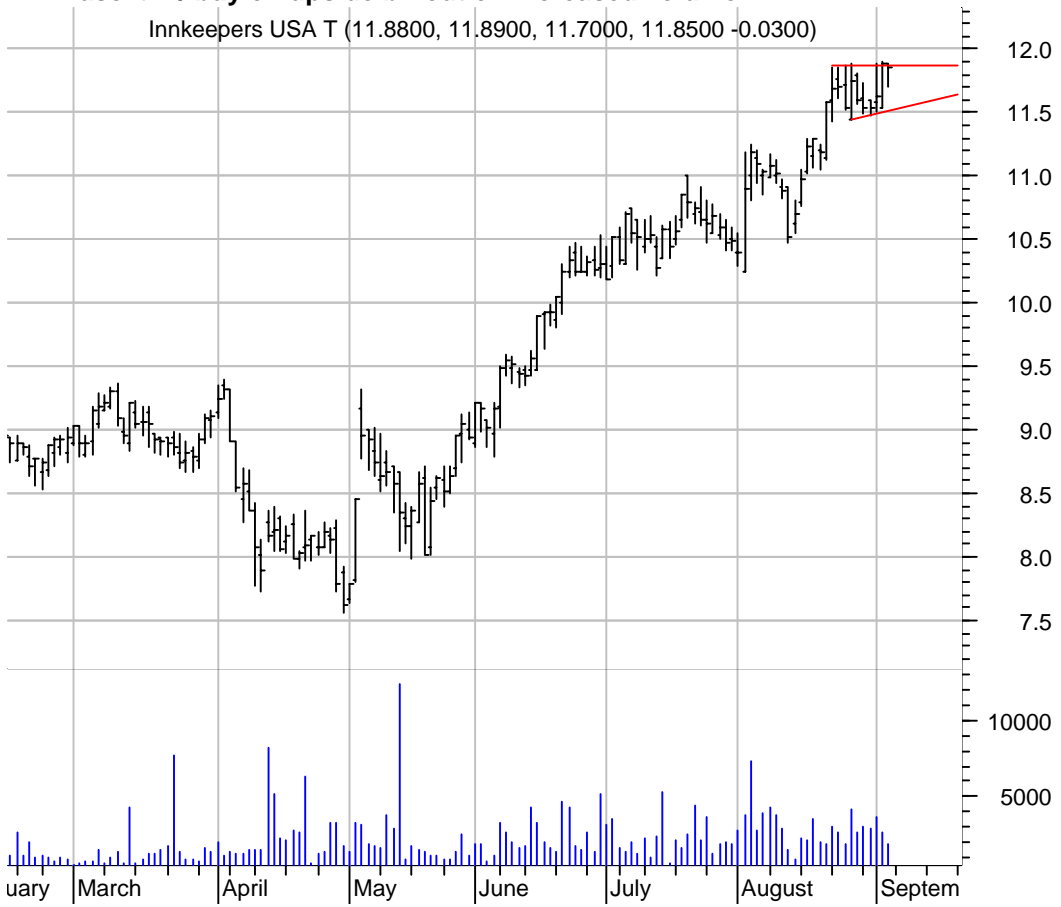


**JJZ symm. tri. (discounting 'spike' day) / buy on upside brkout on increased volume**



**KPA asc. tri. / buy on upside brkout on increased volume**

Innkeepers USA T (11.8800, 11.8900, 11.7000, 11.8500 -0.0300)



**MHR symm. tri. / buy on upside brkout on increased volume**

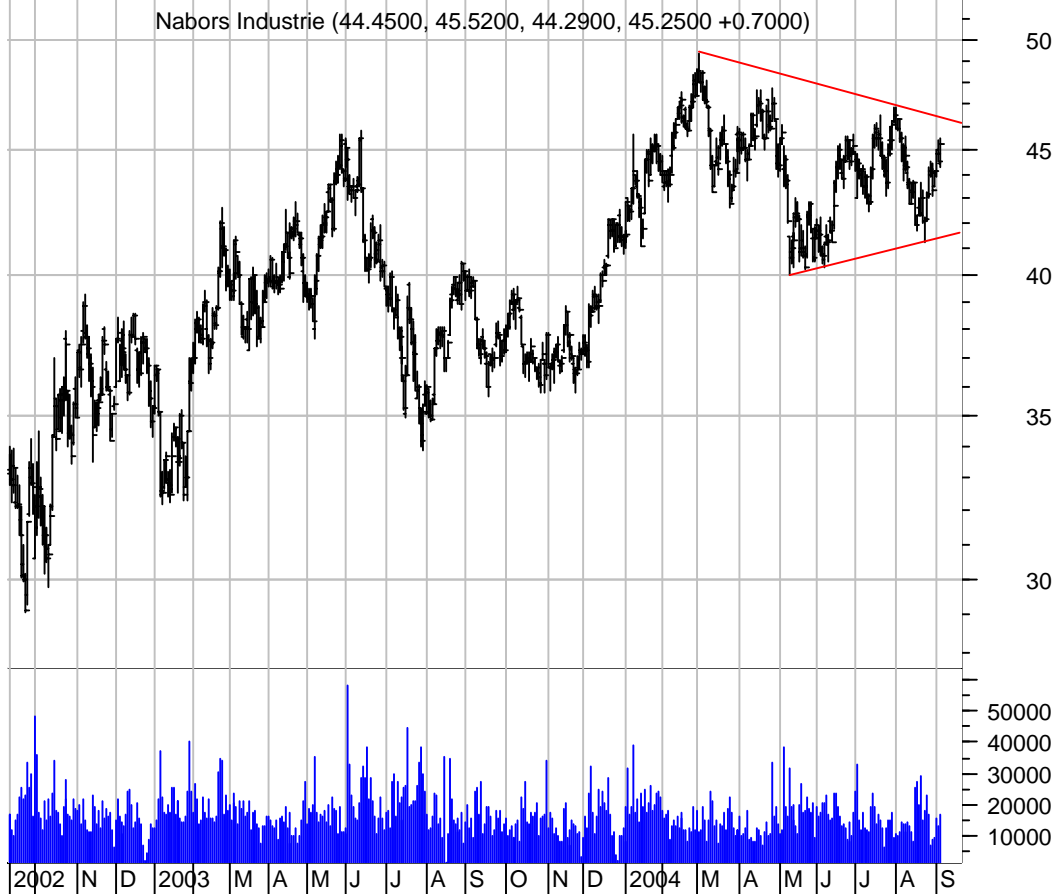
Magnum Hunter Re (10.4100, 10.5100, 10.4000, 10.4600 -0.0400)



**MRVL bullish pennant / buy on upside breakout on increased volume**



**NBR symm. tri. / buy on upside breakout on increased volume**



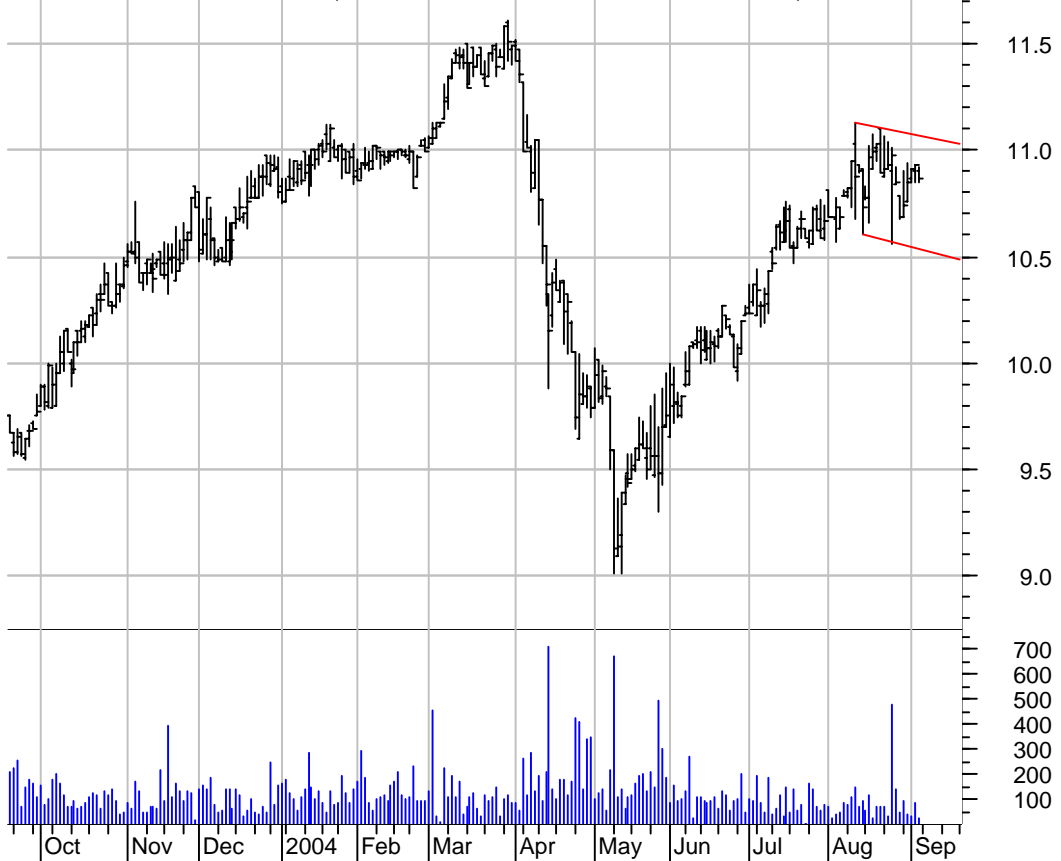
**OS sloppy asc. tri. / buy on upside brkout on increased volume**

Oregon Steel Mil (14.5500, 14.6100, 14.2800, 14.3900 -0.1500)



**PDT bullish flagging / buy on upside brkout on increased volume**

Hancock Patriot (10.9000, 10.9200, 10.8500, 10.8700 -0.0600)

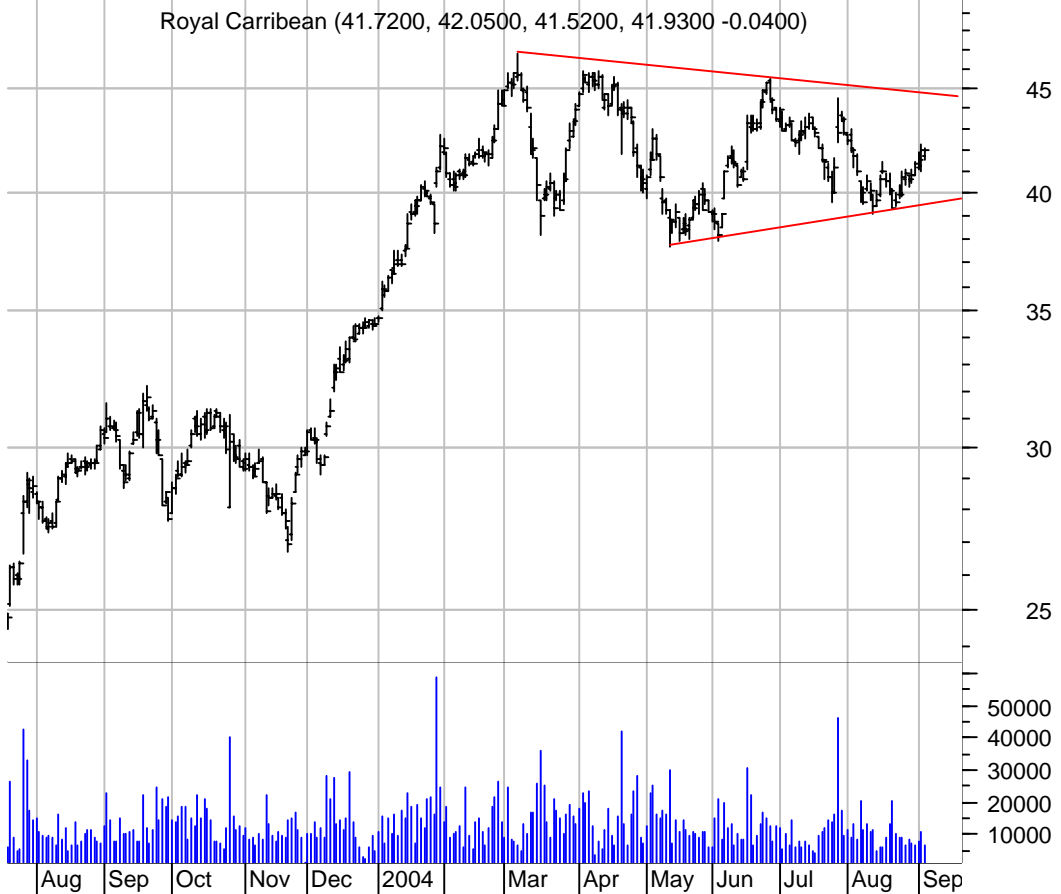




**PETC bull pennant / buy on upside brkout on increased volume**



**RCL symm. tri. / buy on upside brkout on increased volume**



**SAFC bullish flagging / buy on upside breakout on increased volume**



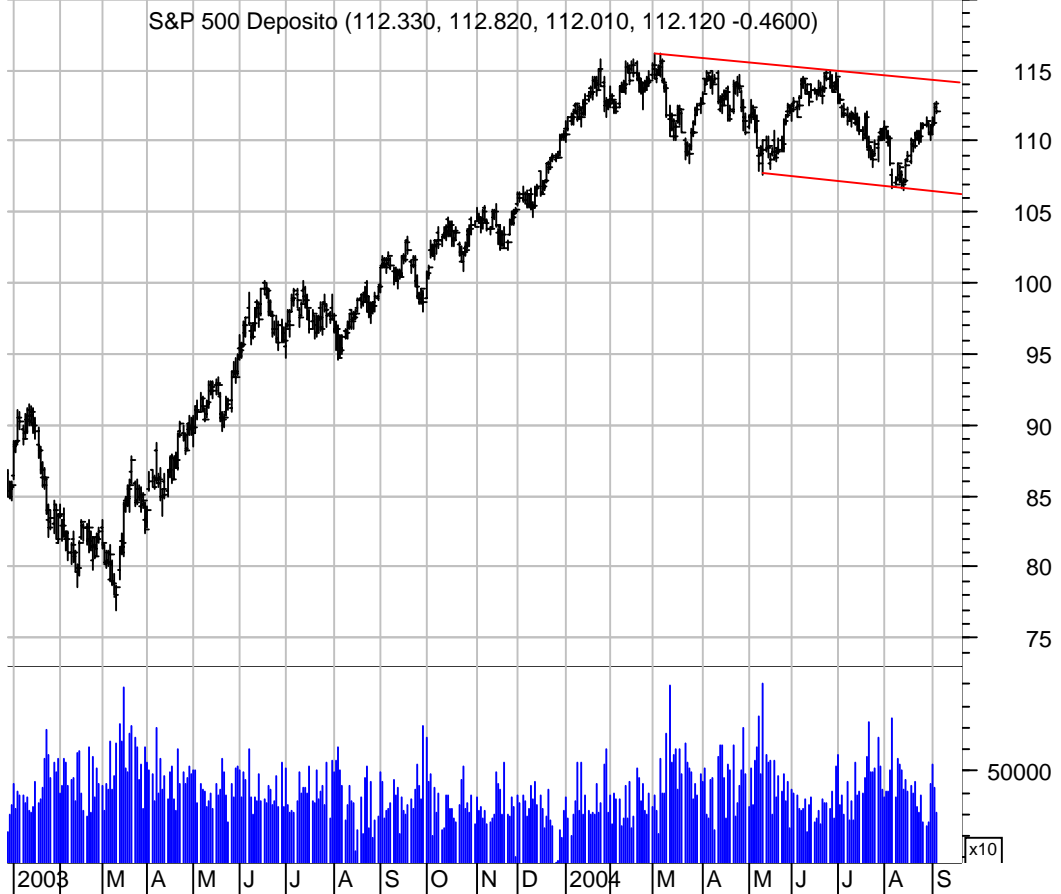
**SAFT asc. tri. / buy on upside breakout on increased volume**



**SCSC bull pennant / buy on upside brkout on increased volume**



**SPY bullish flagging / buy on upside brkout on increased volume**



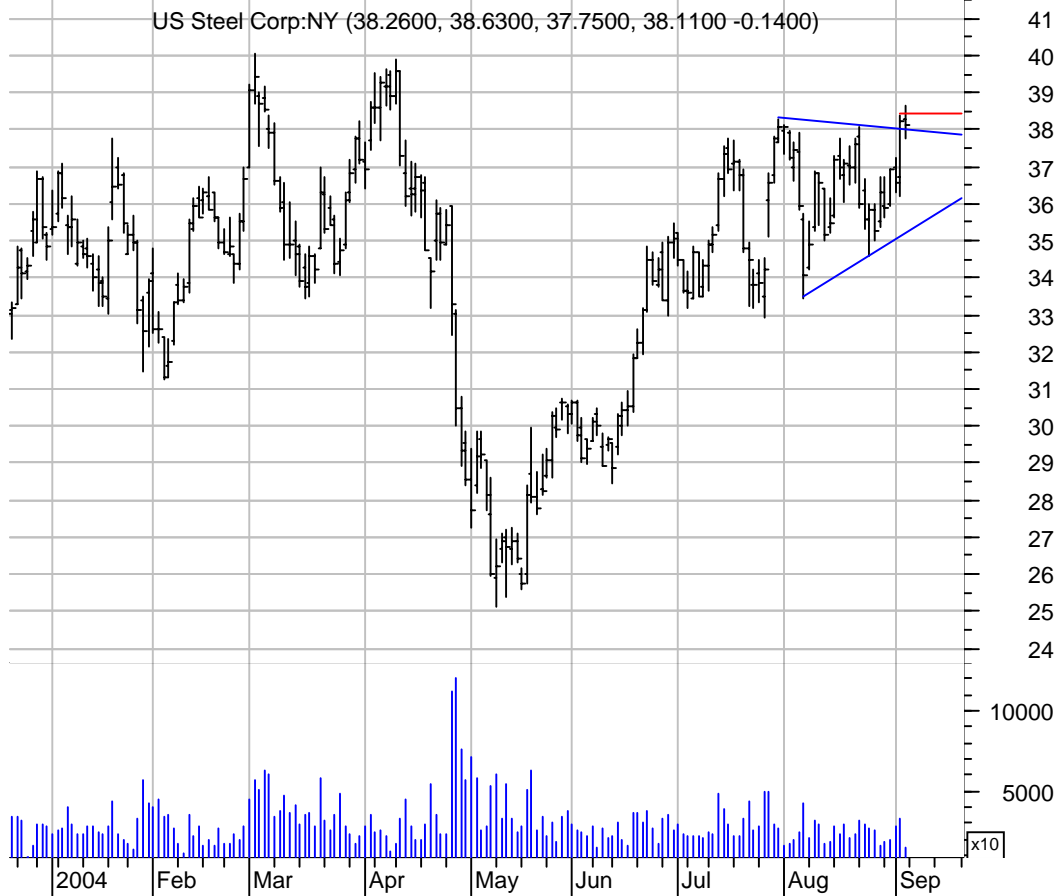
**STLD symm. tri. / buy on upside brkout on increased volume**



**TEX falling wedge / buy on upside brkout on increased volume**



**X symm. tri. / buy on upside follow-thru (dotted red line) on larger than normal volume**



**YELL symm. tri. / buy on upside brkout on increased volume**



**chartpatterns.com**  
Chart Pattern Analysis for Timing the Markets

[KMatras@aol.com](mailto:KMatras@aol.com)