

**AAPL symm. tri. / buy on upside brkout on increased volume**



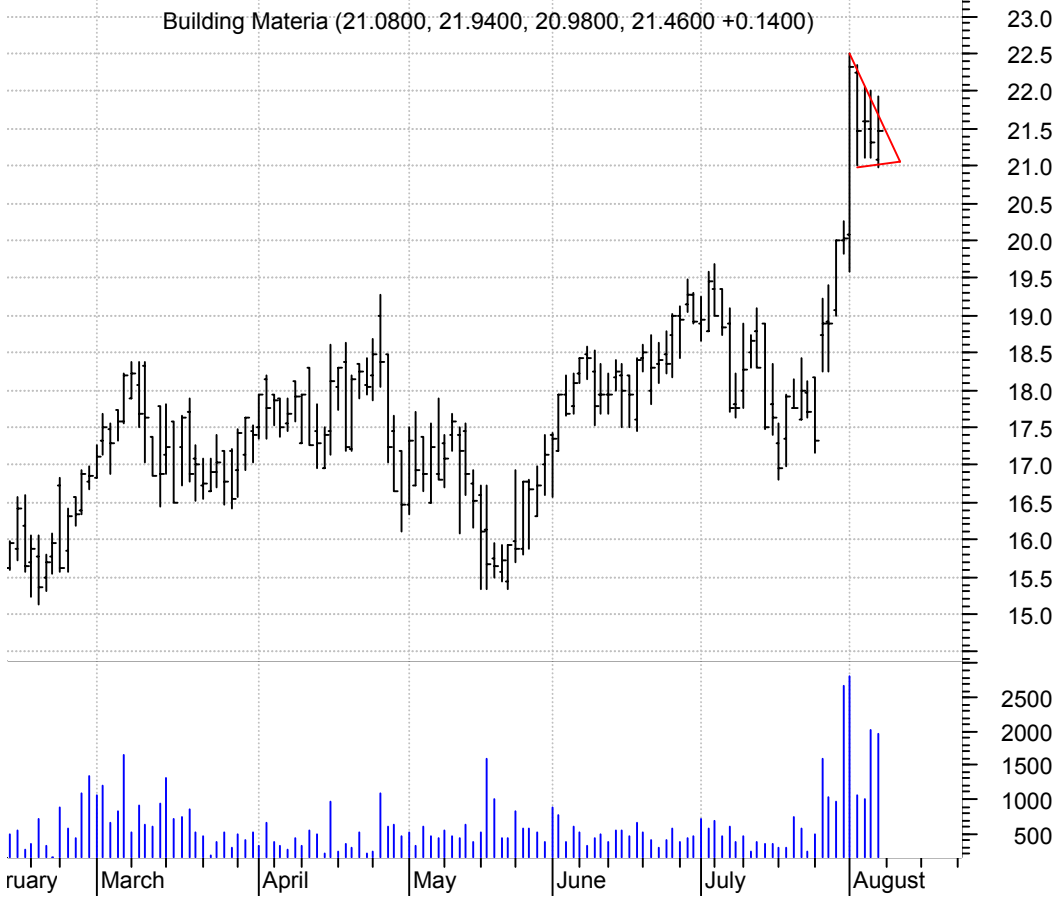
**AEC bull pennant / buy on upside brkout on increased volume**



**ALL symm. tri. / buy on upside breakout on increased volume**



**BMHC bullish pennant / buy on upside breakout on increased volume**



**BMI symm. tri. / buy on upside brkout on increased volume**

Badger Meter Inc (44.2500, 44.7500, 44.2500, 44.5000 +0.000)



**CHS symm. tri. / sell on downside brkout on increased volume**

Chicos Fas Inc:N (39.7500, 41.2500, 39.6000, 40.4200 -0.1100)



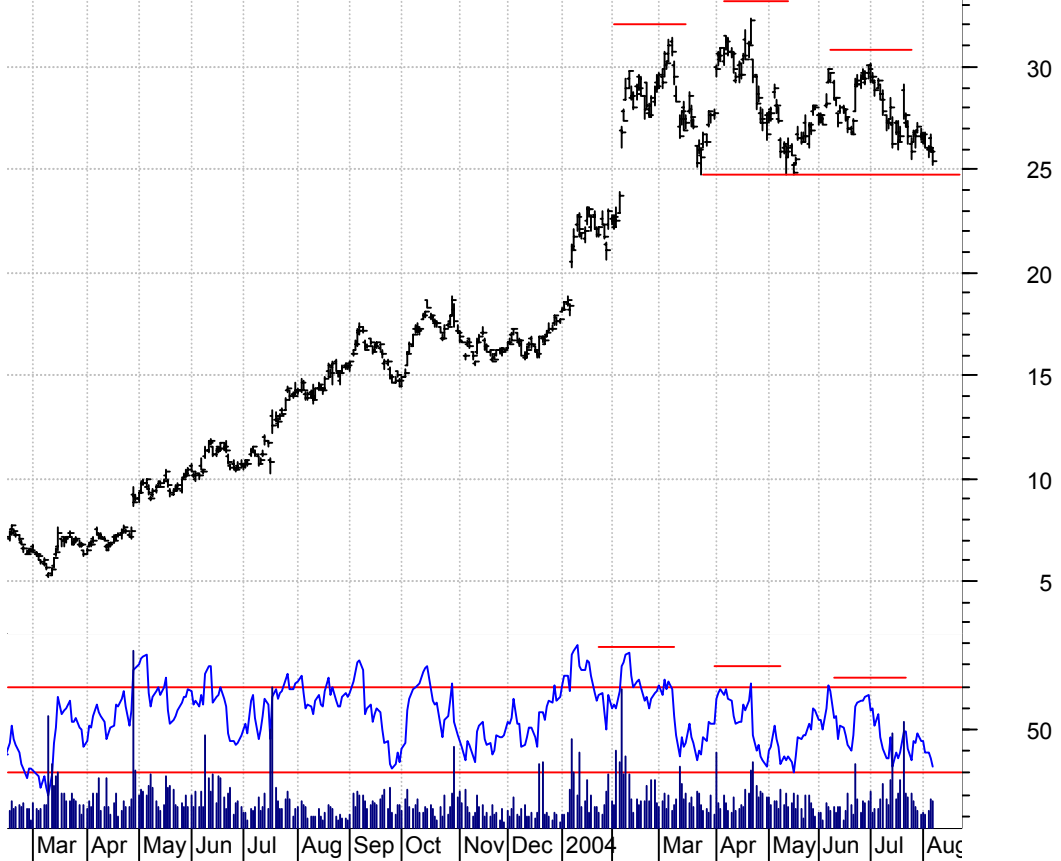
**DHI desc. tri. in lrg. h. & sh. / sell on downside brkout of h. & sh. on increased volume**

Horton DR Inc:NY (28.1300, 28.5600, 28.0000, 28.1600 +0.0400)

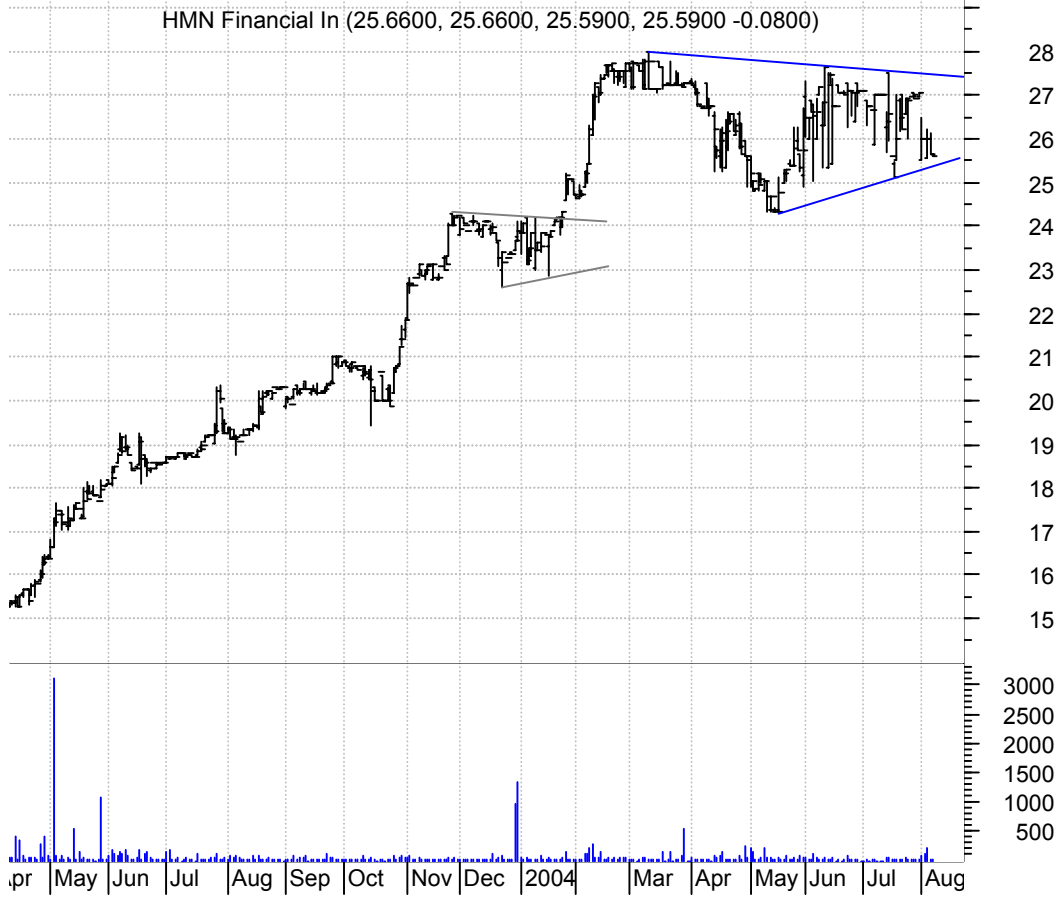


**ERICY h. & sh. / sell on downside brkout on increased volume**

LM Ericsson Tele (25.9100, 26.0700, 25.2600, 25.4100 -0.4300)



**HMNF symm. tri. / buy on upside brkout on increased volume**



**IPCR symm. tri. / buy on upside brkout on increased volume**



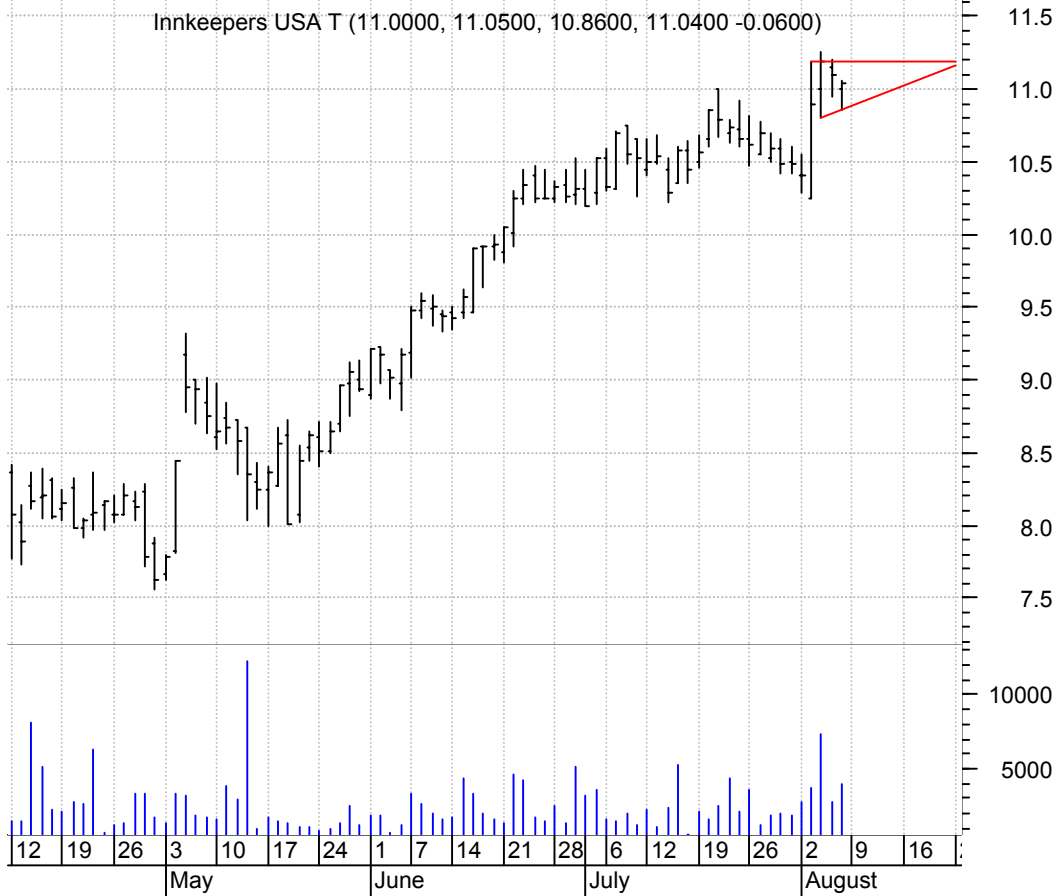
**ISRG bullish pennant / buy on upside brkout on increased volume**



**JOSB sloppy desc. tri. / sell on downside brkout on larger than normal volume**



**KPA sloppy asc. tri. preceded by 'pole-like' move / buy on upside brkout on increased volume**



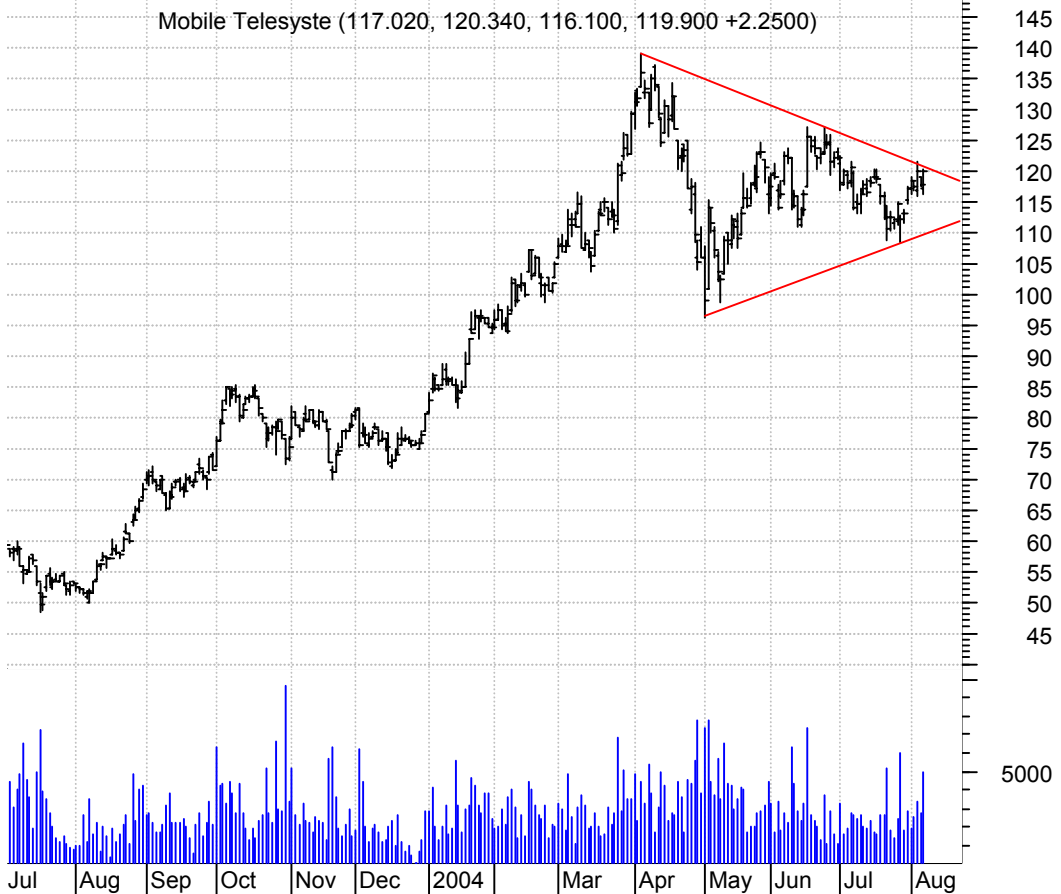
**LEG symm. tri. preceded by 'pole-like' move / buy on upside brkout on increased volume**



**LSS falling wedge preceded by 'pole-like' move / buy on upside brkout on increased volume**



**MBT symm. tri. / buy on upside brkout on larger than normal volume**





**MVK symm. tri. / buy on upside brkout on increased volume**



**NARA symm. tri. / buy on upside brkout on increased volume**



**NCEN symm. tri. / buy on upside brkout on increased volume**



**NCX asc. tri. preceded by 'pole-like' move / buy on upside brkout on increased volume**



**NMGA symm. tri. / buy on upside breakout on increased volume**



**OCAS symm. tri. / buy on upside breakout on increased volume**



**PLD asc. tri. / buy on upside breakout on increased volume**



**POT asc. tri. preceded by 'pole-like' move / buy on upside breakout on increased volume**



**PQUE symm. tri. / buy on upside brkout on increased volume**



**SAFC symm. tri. / buy on upside brkout on increased volume**



**UNH symm. tri. / buy on upside brkout on increased volume**



**USG bullish flagging / buy on upside brkout on increased volume**



**WCC sloppy asc. tri. preceded by 'pole-like' move / buy on upside breakout on increased volume**



**XRX bullish flag (even clearer on a weekly chart) / buy on upside breakout on increased volume**



**chartpatterns.com**  
Chart Pattern Analysis for Timing the Markets

[KMatras@aol.com](mailto:KMatras@aol.com)