

ADSK symm. tri. brkout / buy and use the bottom of the pattern (asc. trendline) as a failure point



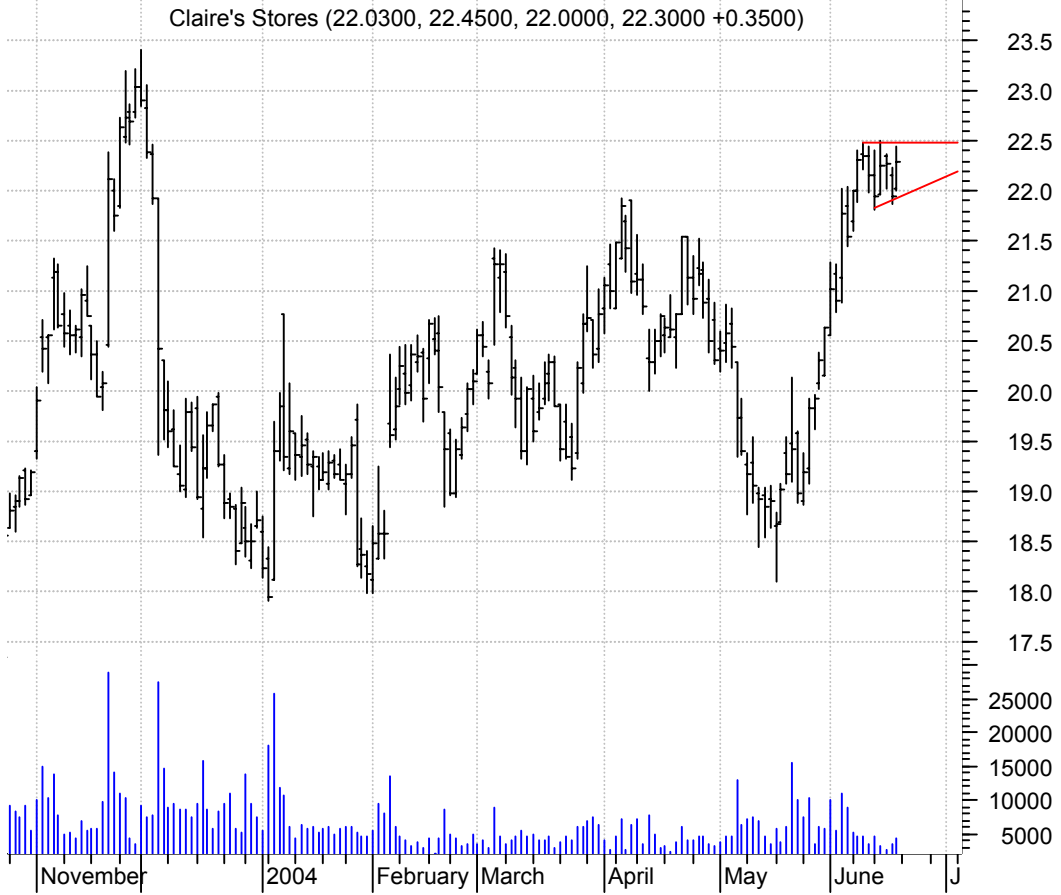
BRCM symm. tri. / buy on upside breakout on increased volume



CKR symm. tri. preceded by 'pole-like' move / buy on upside breakout on increased volume



CLE asc. tri. preceded by 'pole-like' move / buy on upside brkout on increased volume



CMI asc. tri. / buy on upside brkout on increased volume



CPRT bull pennant / buy on upside brkout on increased volume

Copart Inc:OTC (24.4400, 25.2900, 24.0400, 24.3400 -0.2800)

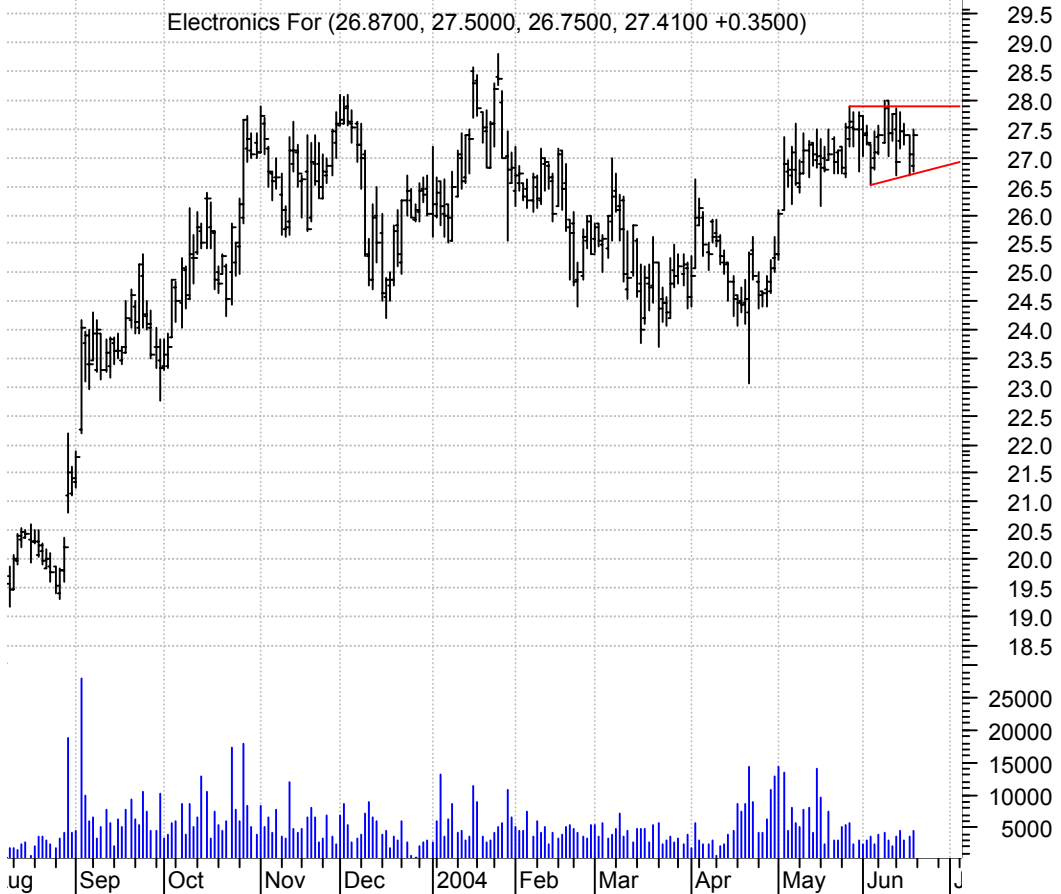


DY asc. tri. / buy on upside brkout on increased volume

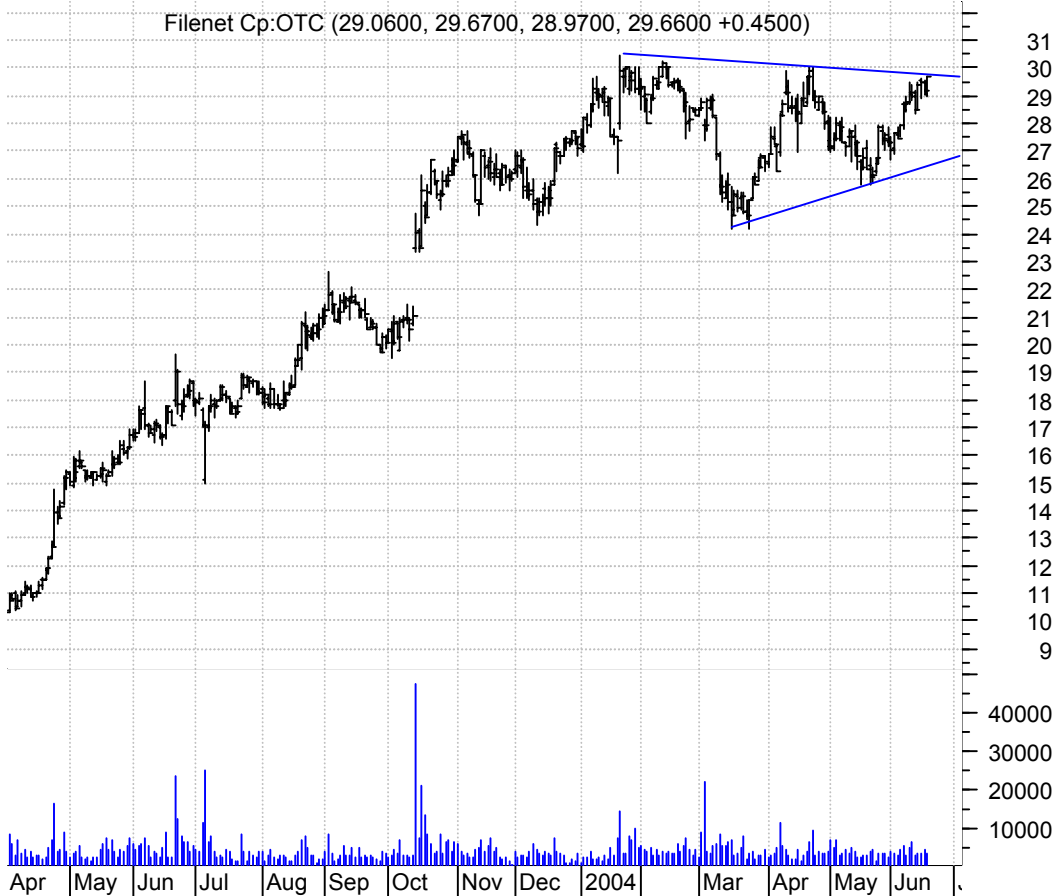
Dycom Industries (25.2900, 25.4000, 24.9900, 25.1900 -0.1000)



EFII asc. tri. / buy on upside brkout on increased volume



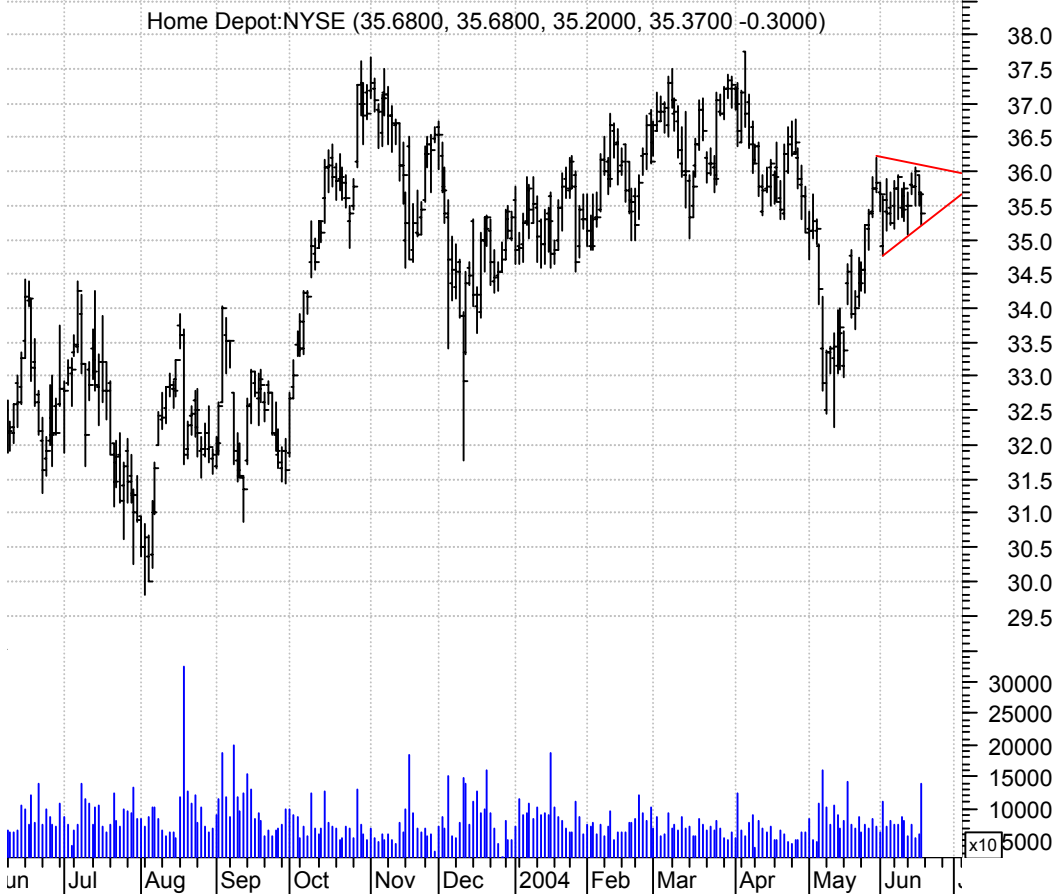
FILE symm. tri. / buy on upside brkout on increased volume



GCO bullish flagging / buy on upside breakout on increased volume



HD symm. tri. preceded by 'pole-like' move / buy on upside breakout on larger than normal volume



HHGP bullish flag / buy on upside brkout on increased volume

HUDSON HIGHLAND (29.9000, 30.2500, 29.7200, 29.7200 -0.2800)



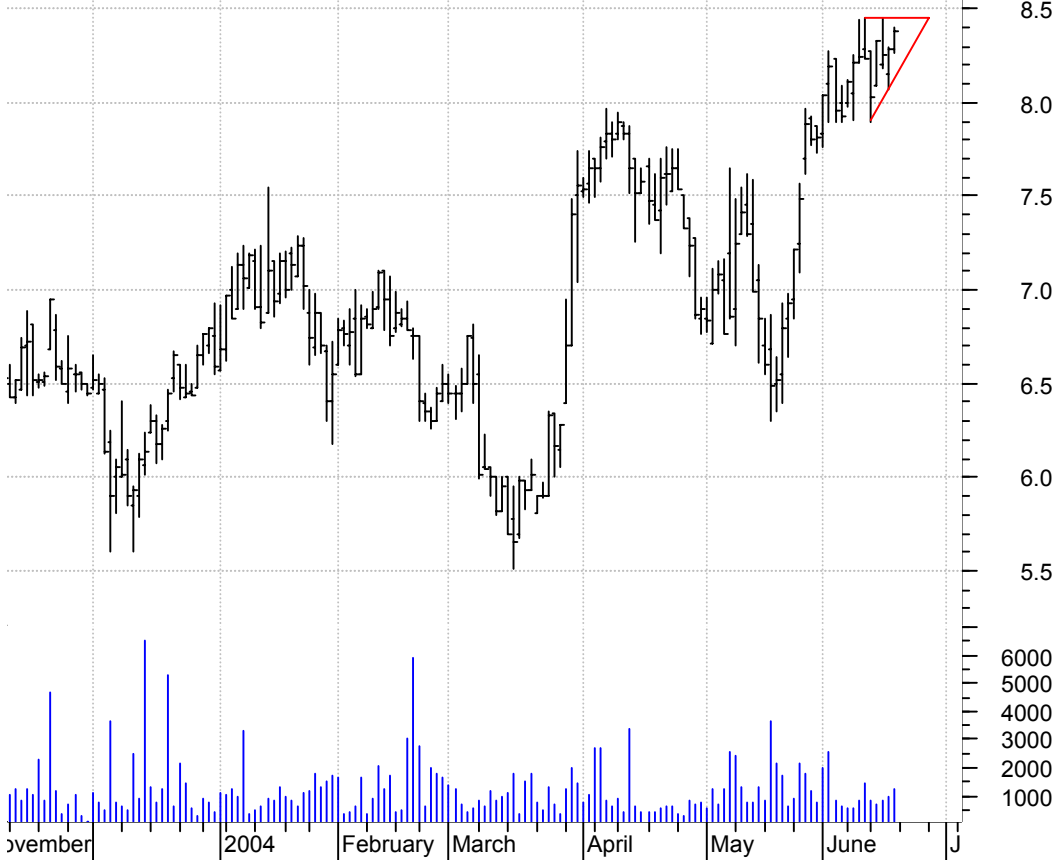
KCS symm. tri. / buy on upside brkout on increased volume

KCS Energy Inc:N (12.3700, 12.5600, 12.3500, 12.5200 +0.2500)



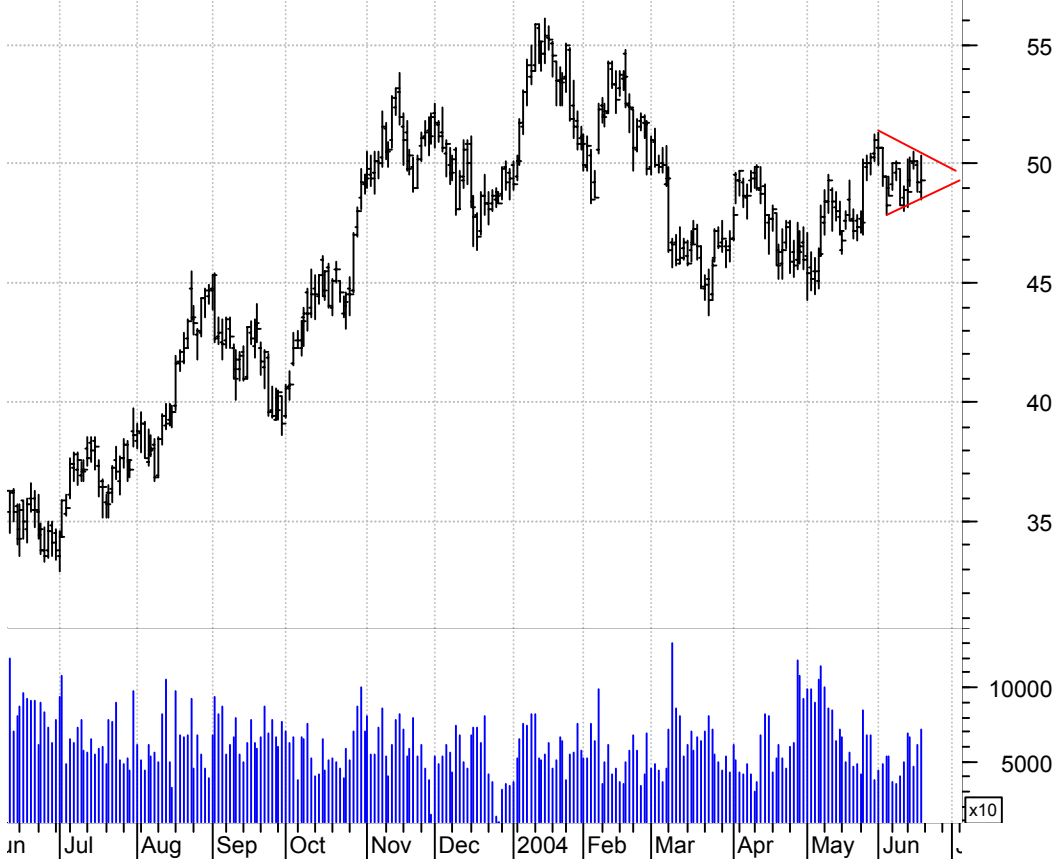
MAG asc. tri. / buy on upside brkout on increased volume

Magnetek Inc:NYS (8.2900, 8.4000, 8.2600, 8.3800 +0.0900)



MXIM symm. tri. / buy on upside brkout on increased volume

Maxim Integrated (48.8200, 50.3400, 48.5200, 49.3000 +0.1100)



OCLR sloppy rectangle / buy on upside breakout on increased volume

Ocular Sciences (34.7200, 35.5300, 34.3800, 35.3500 +0.3600)



ODFL sloppy bull flag / buy on upside breakout on increased volume

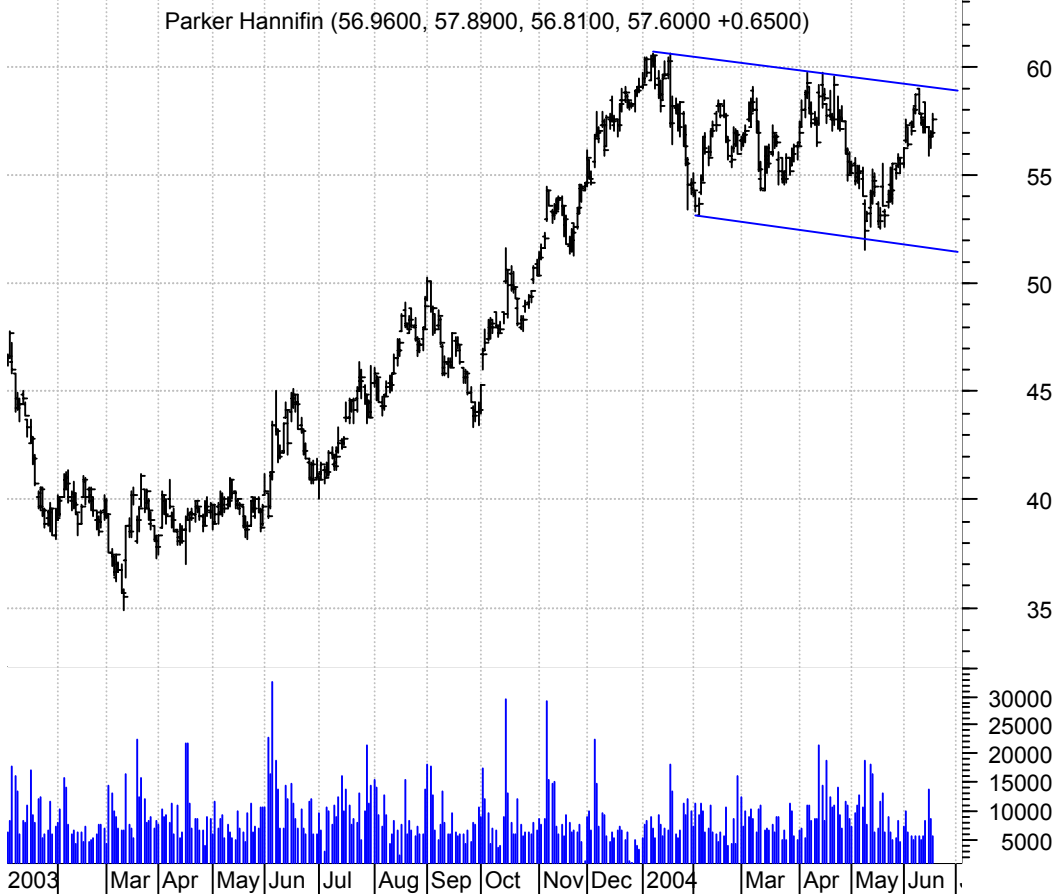
Old Dominion Fre (26.8000, 28.2900, 26.6200, 27.4800 +0.5100)



OSG bull pennant / buy on upside brkout thru dotted red line on increased volume



PH bullish flagging / buy on upside brkout on increased volume



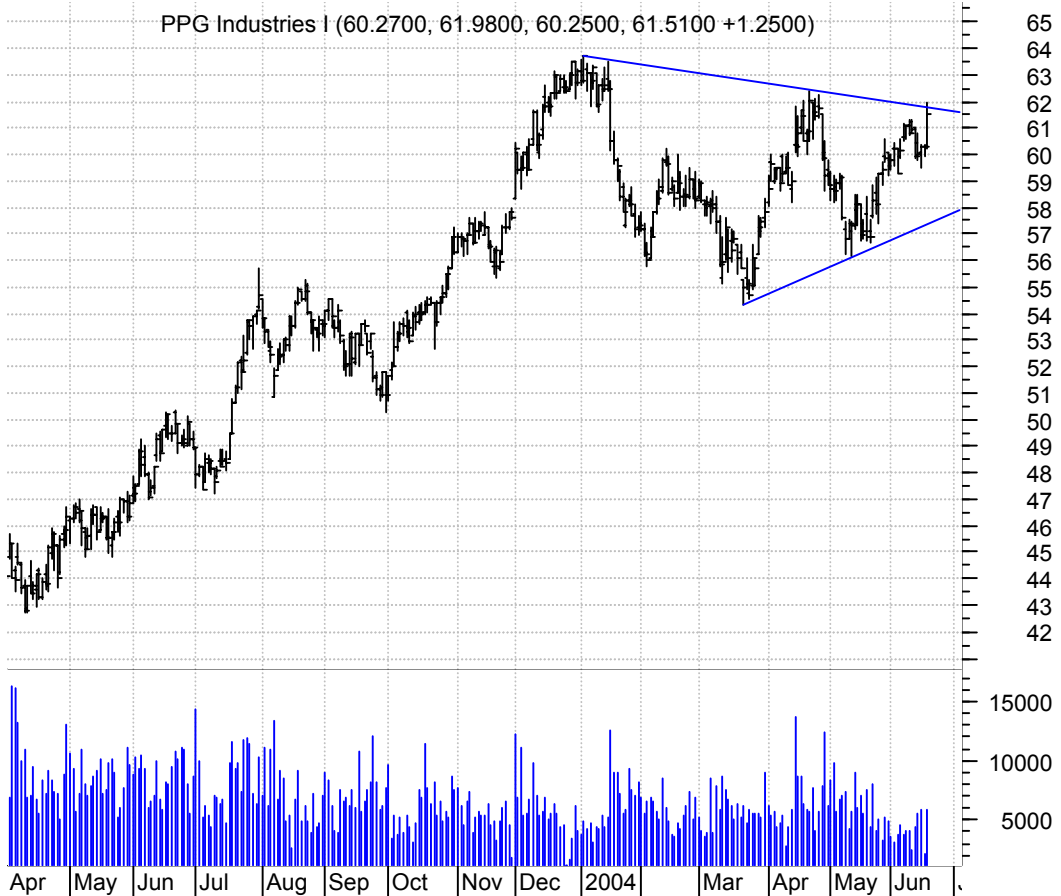
PNR bullish flag / buy on upside brkout on increased volume



POL sloppy symm. tri. (discounting spike days) / buy on upside brkout on increased volume



PPG symm. tri. / buy on upside brkout on increased volume



PQUE symm. tri. brkout / buy and use bottom of pattern (asc. trendline) as a failure point



ROK symm. tri. / buy on upside breakout on increased volume



SIVB symm. tri. preceded by 'pole-like' move / buy on upside breakout on increased volume



STJ symm. tri. / buy on upside brkout on increased volume

St Jude Medical (76.2500, 77.7200, 76.0000, 76.9500 +0.0500)

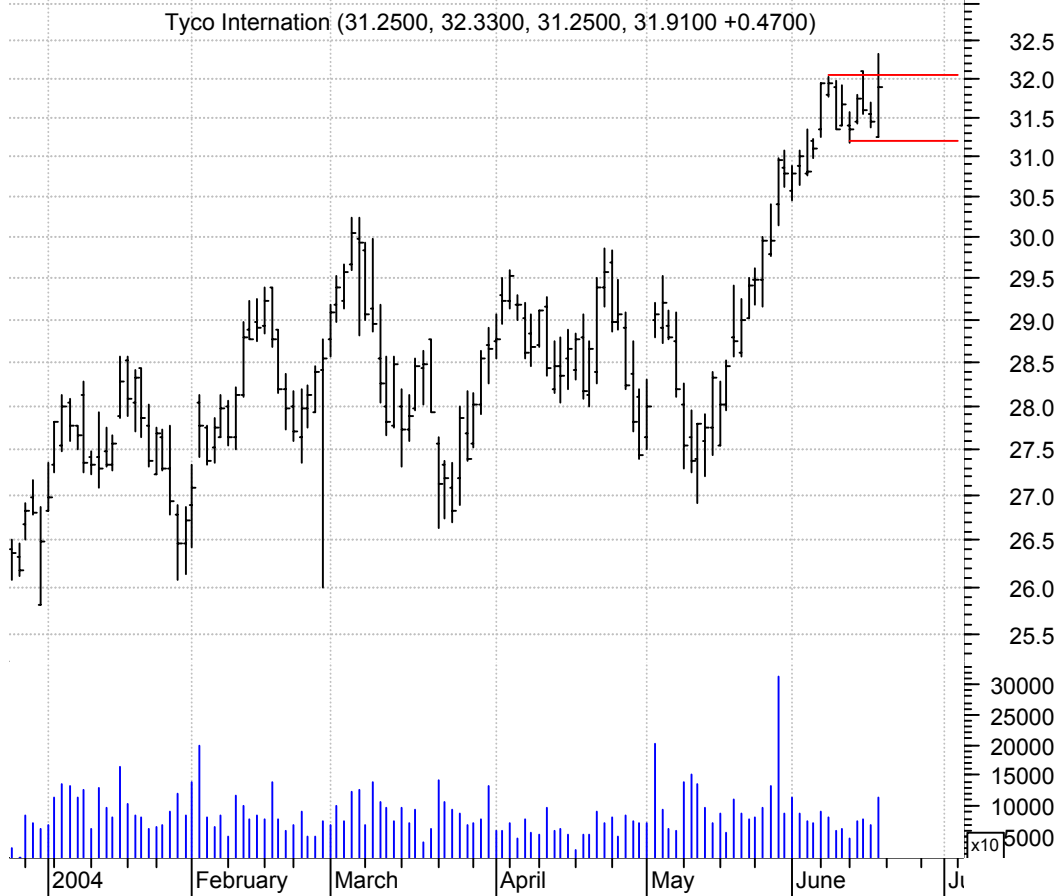


SVC asc. tri. (after bull pennant brkout) / buy on upside brkout on increased volume

Stewart & Steven (17.5300, 17.8800, 17.5300, 17.6800 +0.2500)



TYC rectangle preceded by 'pole-like' move / buy on upside brkout on larger than normal volume



WCC symm. tri. / buy on upside brkout on increased volume



WIRE bear pennant / sell on downside brkout on increased volume

Encore Wire Corp (28.3000, 28.4800, 27.7000, 27.8700 -0.3900)



WNC rectangle / buy on upside brkout on increased volume

Wabash Natl Cp:N (27.6000, 27.6200, 27.0900, 27.2000 -0.4000)



YHOO asc. tri. preceded buy 'pole-like' move / buy on upside breakout on increased volume



chartpatterns.com
Chart Pattern Analysis for Timing the Markets

KMatras@aol.com