

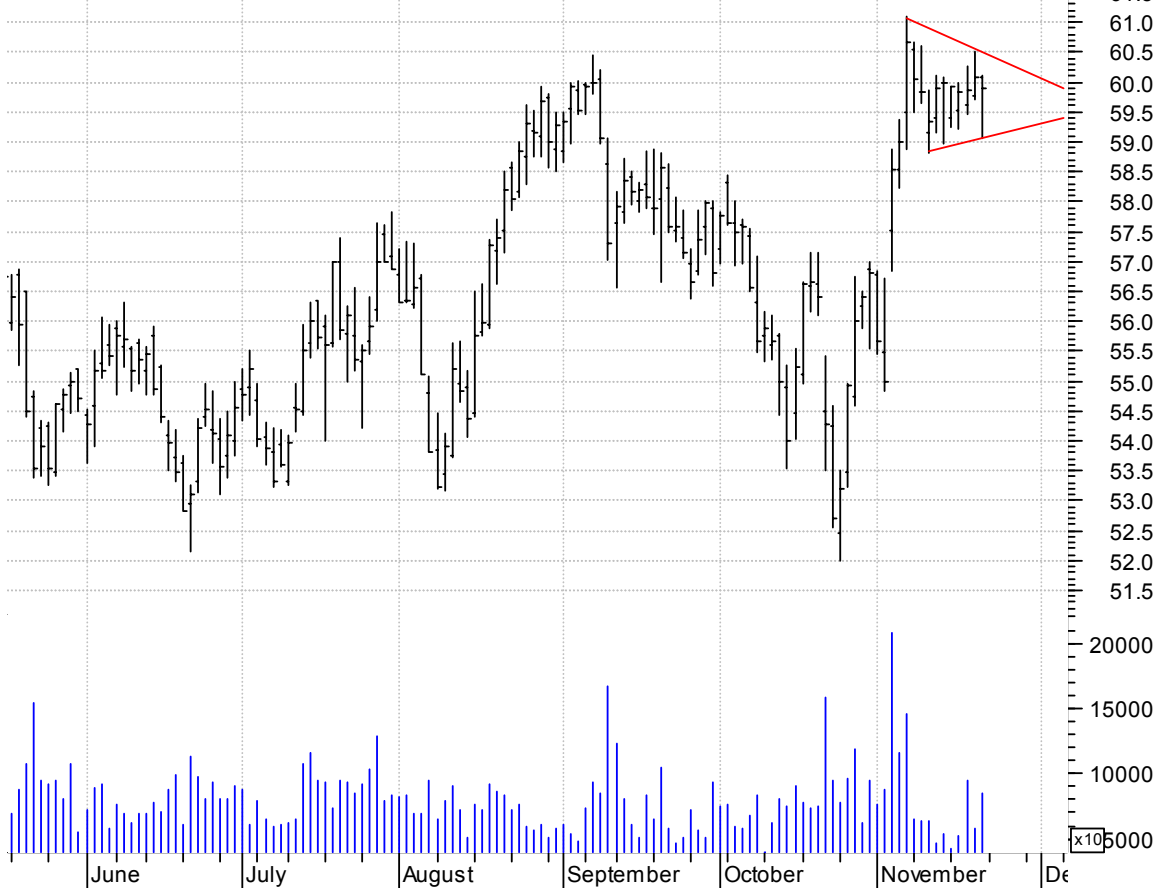
AIT symm. tri. / buy on upside brkout on increased volume

Applied Industri (40.0000, 40.4000, 39.4500, 40.1300 -0.0100)



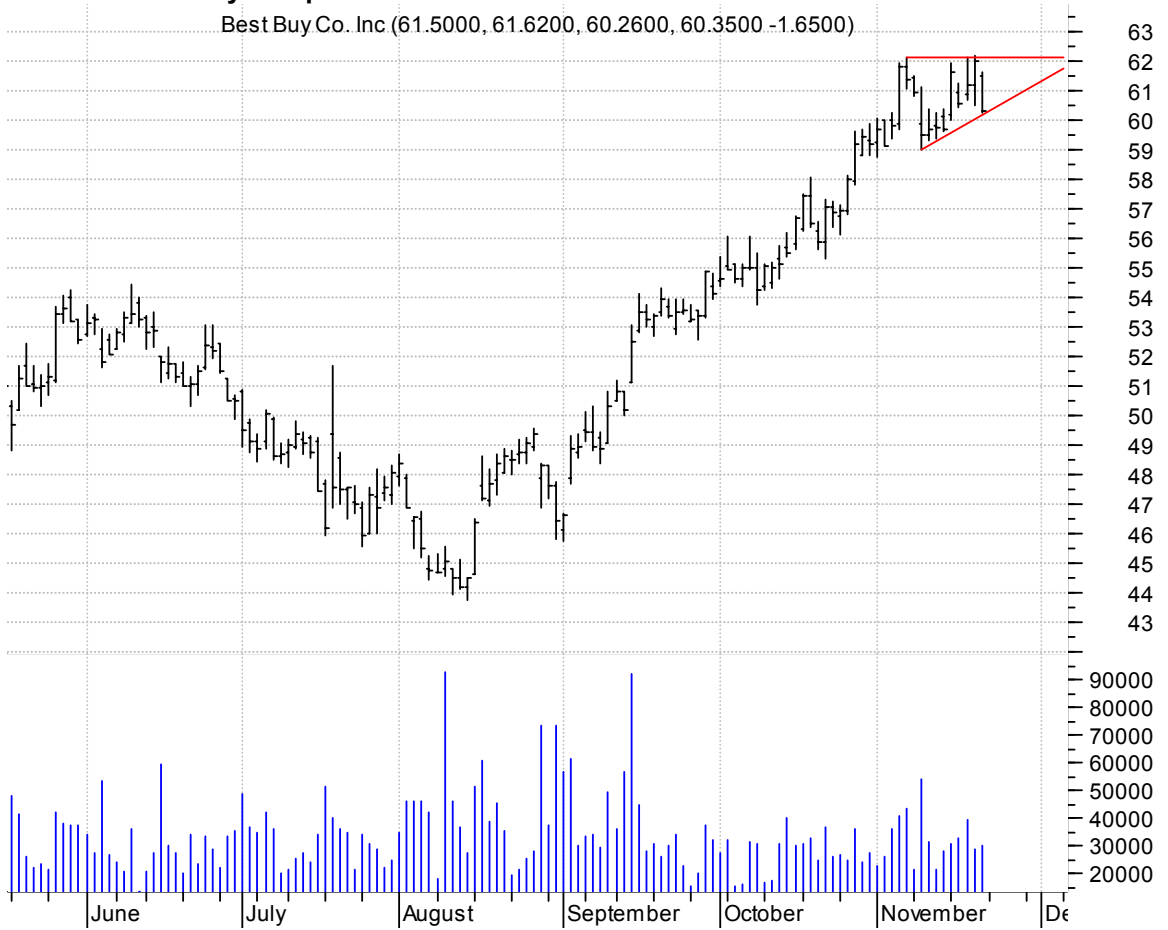
AMGN bullish pennant / buy on upside brkout on increased volume

Amgen Co:OTC (60.0700, 60.1000, 59.0500, 59.8800 -0.2000)



BBY asc. tri. / buy on upside breakout on increased volume

Best Buy Co. Inc (61.5000, 61.6200, 60.2600, 60.3500 -1.6500)



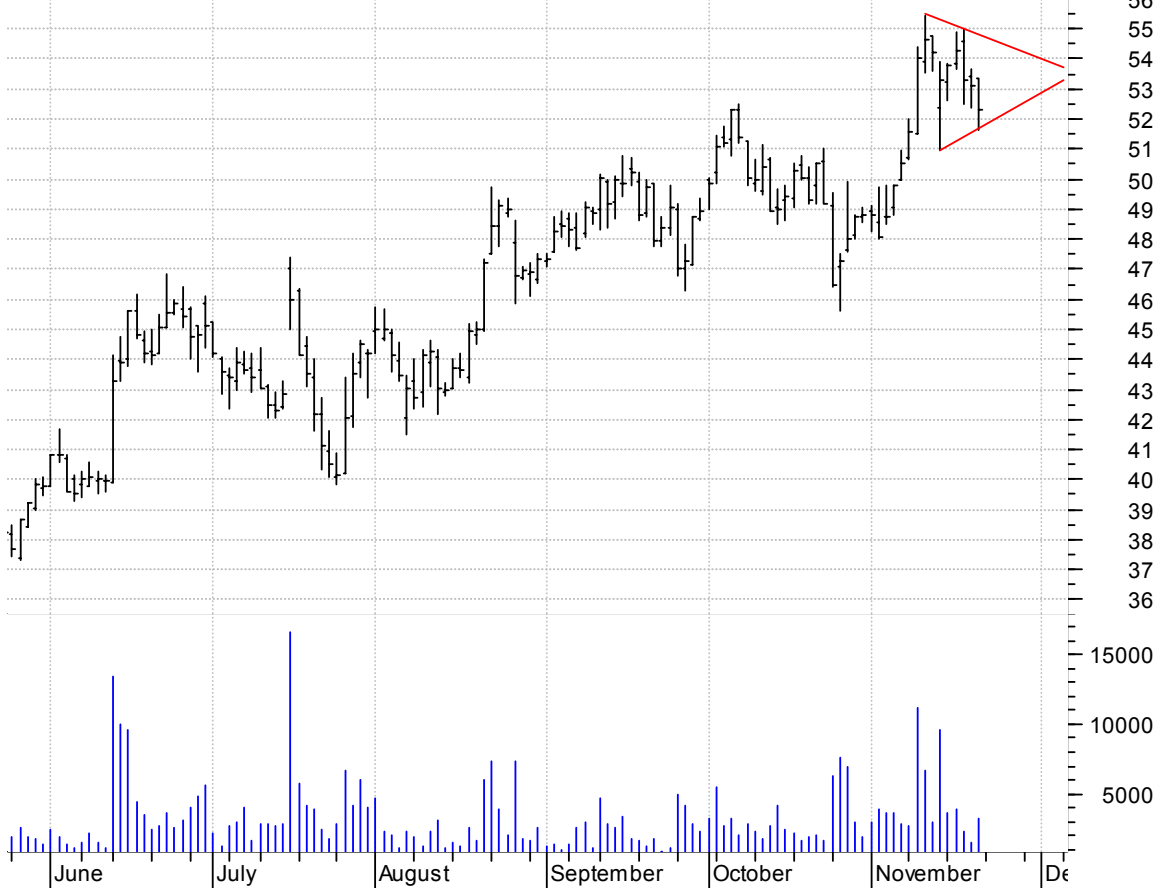
BCII symm. tri. / buy on upside breakout on increased volume

Bone Care Intl I (24.0900, 24.6000, 23.2600, 24.5000 +0.2800)



BSTE symm. tri. preceded by 'pole-like' move / buy on upside brkout on increased volume

Biosite Inc:OTC (53.3700, 53.3700, 51.6100, 52.3000 -0.8300)



CATT symm. tri. preceded by 'pole-like' move / buy on upside brkout on increased volume

Catapult Communi (26.8700, 27.2900, 26.1600, 26.3700 -0.9200)



CBH symm. tri. / buy on upside brkout on increased volume

Commerce Bancorp (60.1100, 60.1100, 59.0500, 59.3100 -0.4800)



CHTT symm. tri. / buy on upside brkout on increased volume

Chatterm Inc:OTC (34.7200, 35.7500, 34.7200, 35.1700 -0.1200)



CMC bullish flagging / buy on upside breakout on increased volume

Commercial Metal (39.7600, 40.1000, 39.2000, 39.6100 -0.0400)



CMS falling wedge preceded by 'pole-like' move / buy on upside breakout on increased volume

CMS Energy.NYSE (10.0100, 10.0800, 9.9100, 10.0200 -0.0900)



COP falling wedge / buy on upside breakout thru dotted red line on increased volume

Conoco Philips:N (86.4100, 87.5700, 86.1300, 87.4300 +1.1700)



CTRP symm. tri. preceded by 'pole-like move / buy on upside breakout on increased volume

CTRIP.COM INTL L (46.8100, 48.5900, 46.6700, 47.0000 -0.2900)



FDX symm. tri. / buy on upside breakout on increased volume

FedEx Corp.:NYSE (95.2300, 95.2300, 93.5800, 94.0500 -0.7300)



GTW rectangle / buy on upside breakout on increased volume

Gateway Inc.:NYSE (5.7500, 5.7600, 5.6200, 5.6600 -0.0900)



HYDL very sloppy asc. tri. / buy on upside breakout on increased volume

HYDRILL CO:OTC (42.4800, 43.1000, 42.3500, 42.9600 +0.6100)



IFSIA asc. tri. preceded by 'pole-like' move / buy on upside breakout on increased volume

Interface Inc Cl (9.8500, 10.0000, 9.6800, 9.8300 -0.1400)



INFY symm. tri. / buy on upside brkout on increased volume

Infosys Tech Ltd (68.3900, 68.4000, 65.2600, 65.5100 -1.8700)



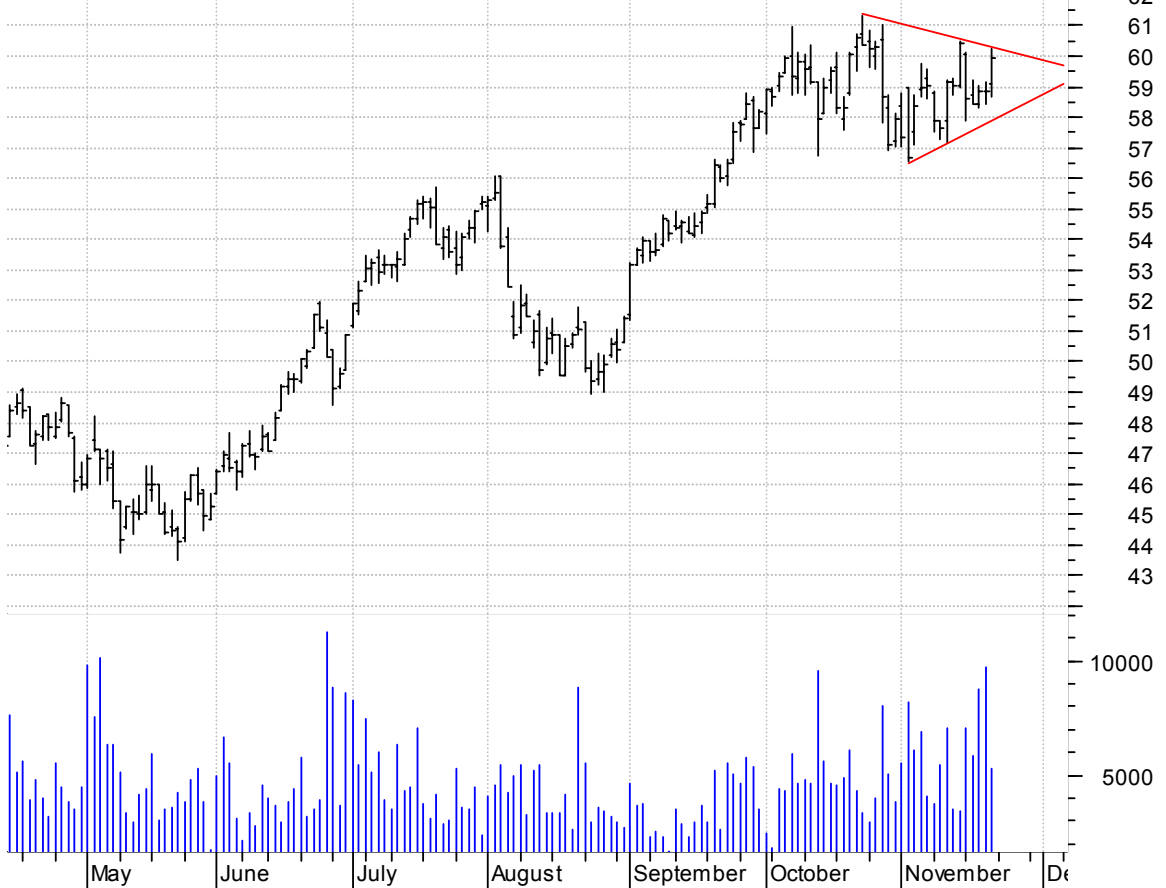
IONA asc. tri. brkout and retracement / buy on upside brkout thru dotted red line on increased volume

Iona Tech Plc AD (5.4000, 5.4000, 4.9100, 5.0900 -0.3100)



NBL symm. tri. / buy on upside breakout on increased volume

Noble Energy Inc (59.1000, 60.2400, 58.6900, 59.9300 +1.0800)



NOI symm. tri. / buy on upside breakout thru dotted red line on increased volume

National-Oilwell (33.9000, 34.5700, 33.4000, 34.3900 +0.8100)



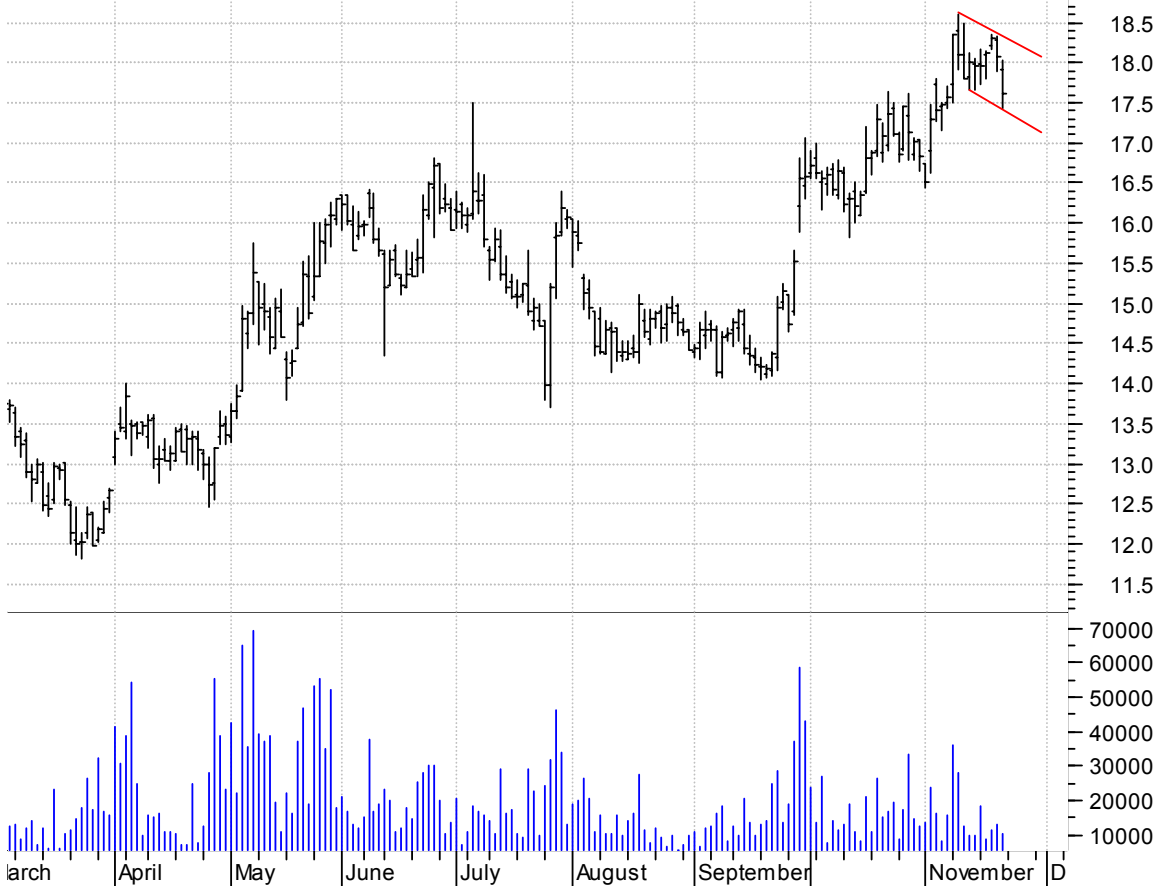
NWK asc. tri. / buy on upside brkout on increased volume

Network Equipmen (8.7000, 8.8000, 8.3600, 8.3700 -0.4300)



NXTP bullish flagging / buy on upside brkout on increased volume

Nextel Partners (17.9100, 18.0200, 17.4300, 17.6100 -0.4600)



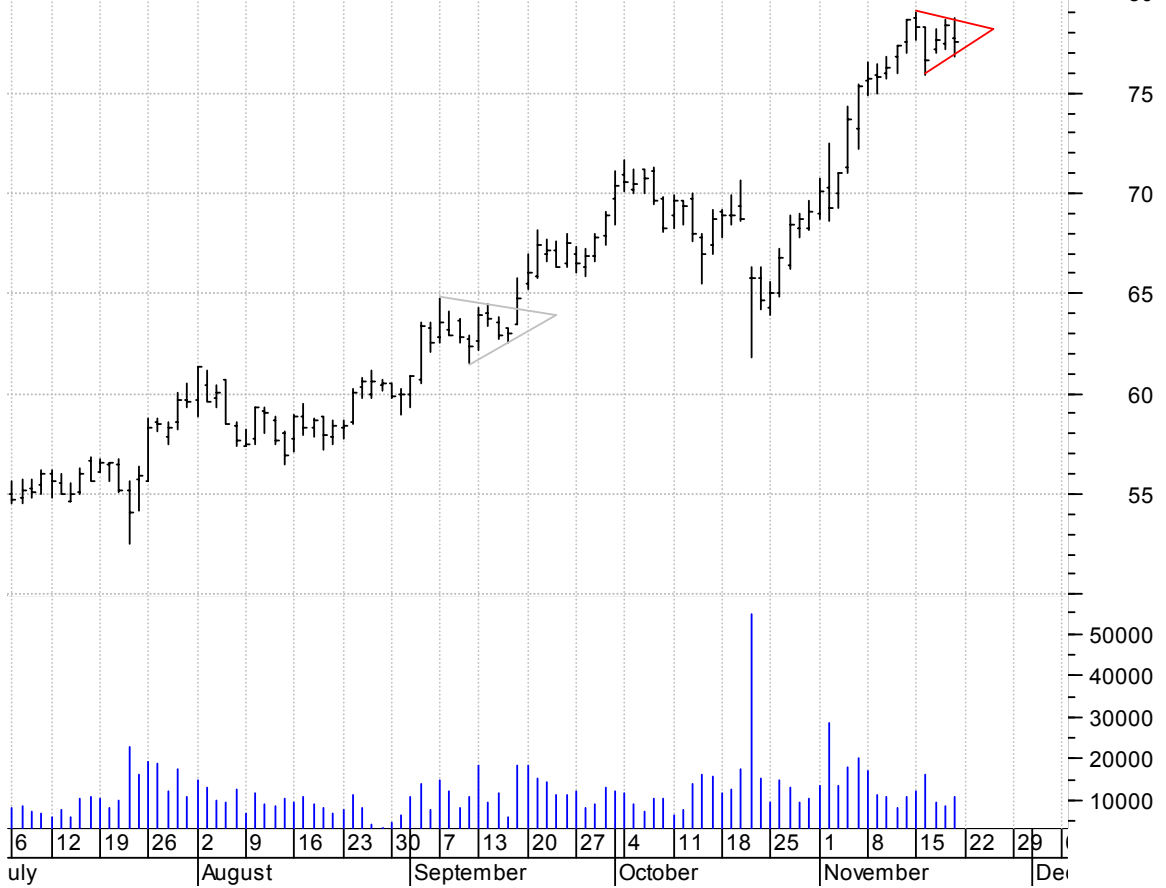
OXY symm. tri. / buy on upside brkout thru dotted red line on increased volume

Occidental Petro (57.5500, 58.4700, 57.4500, 58.4300 +1.1300)



PCAR symm. tri. / buy on upside brkout on increased volume

PACCAR Inc.OTC (77.7700, 78.7000, 76.8000, 77.5600 -0.7800)



PPC falling wedge preceded by 'pole-like' move / buy on upside brkout on increased volume

PILGRIMS PRIDE (32.6000, 33.0000, 31.8000, 32.5500 -0.4500)



PRFT bullish flagging / buy on upside brkout thru dotted red line on increased volume

Perficient Inc:O (4.6000, 4.6500, 4.5000, 4.5500 -0.0800)



PSYS asc. tri. preceded by 'pole-like' move / buy on upside brkout on increased volume

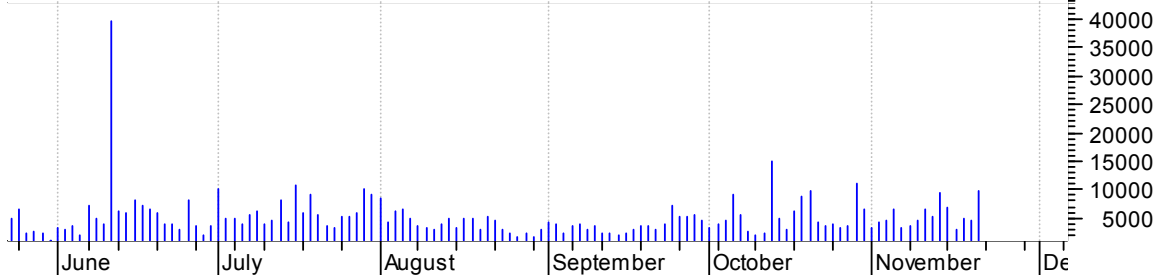


PXP falling wedge preceded by 'pole-like' move / buy on upside brkout on larger than normal volume



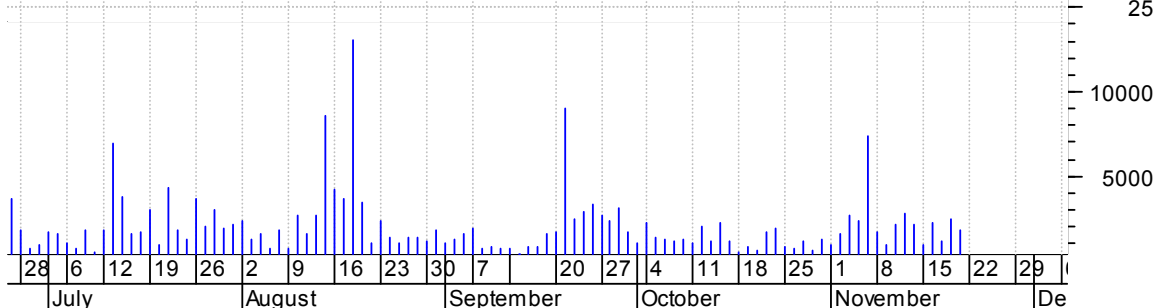
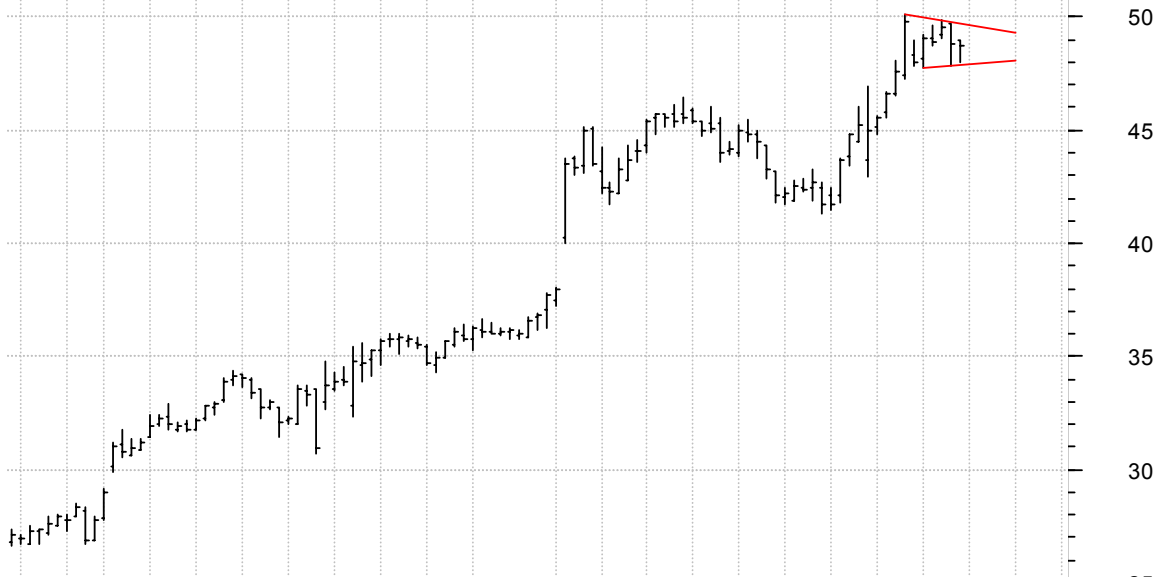
RRC symm. tri. / buy on upside breakout on larger than normal volume

Range Resources (16.9100, 17.2200, 16.6000, 17.0000 +0.1000)



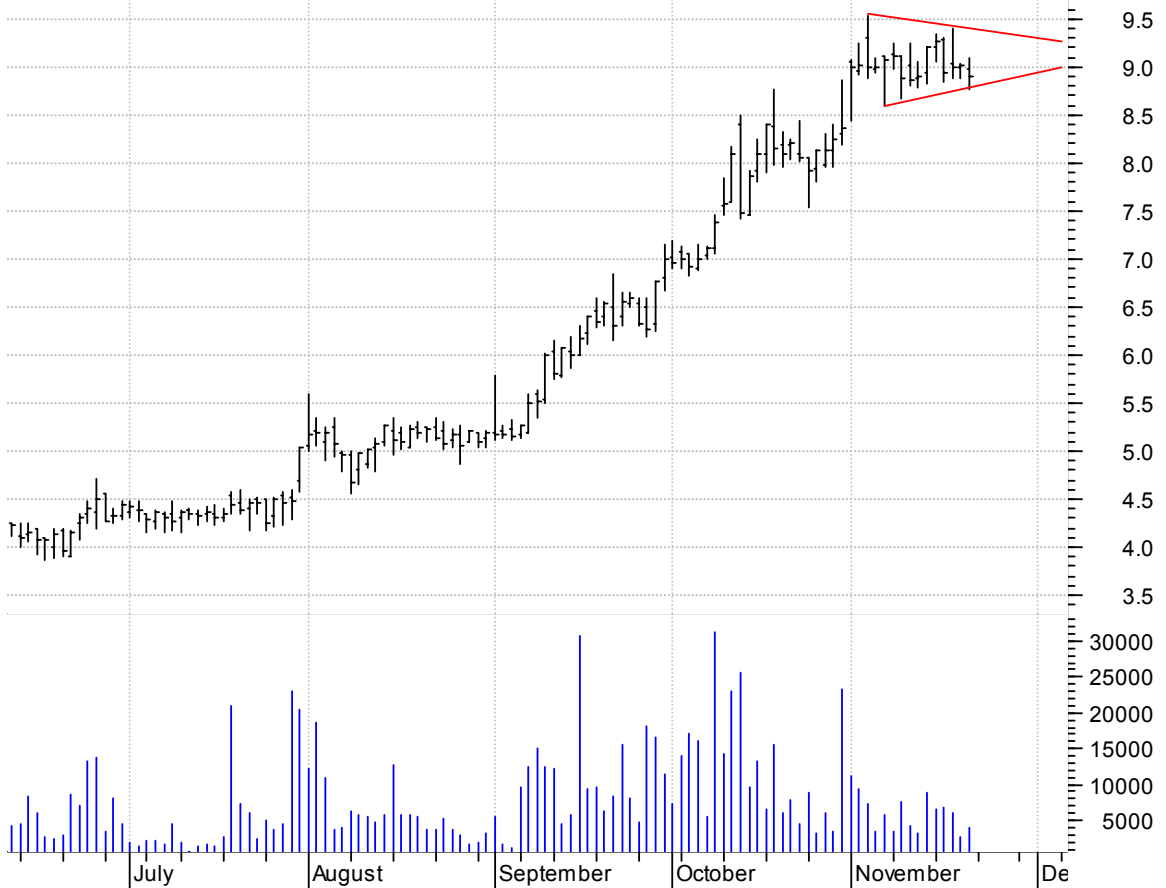
RRBG symm. tri. preceded by 'pole-like' move / buy on upside breakout on increased volume

RED ROBIN GOURME (48.9900, 49.0000, 48.0100, 48.7600 -0.0500)



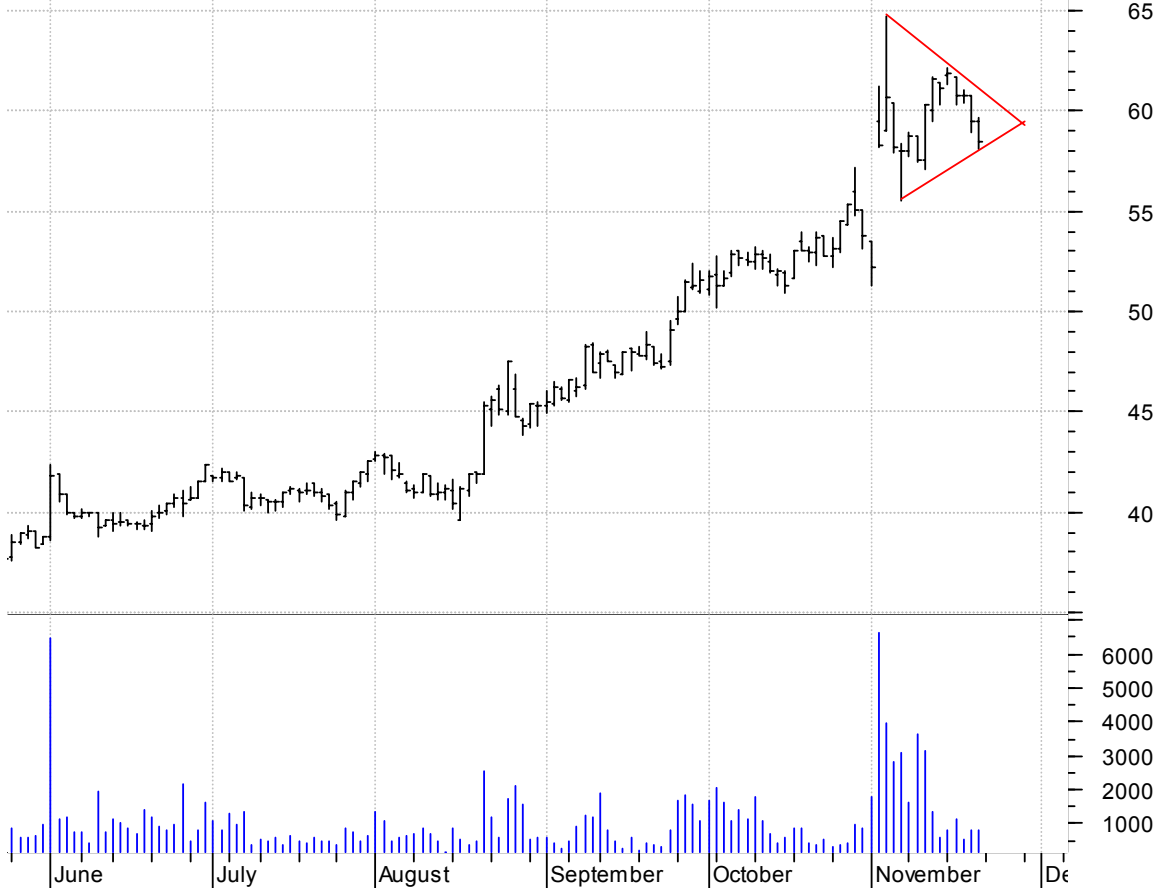
SBAC symm. tri. / buy on upside breakout on increased volume

SBA Commun Cp:OT (8.9800, 9.1000, 8.7700, 8.9000 -0.1100)



SRX symm. tri. preceded by 'pole-like' move / buy on upside breakout on increased volume

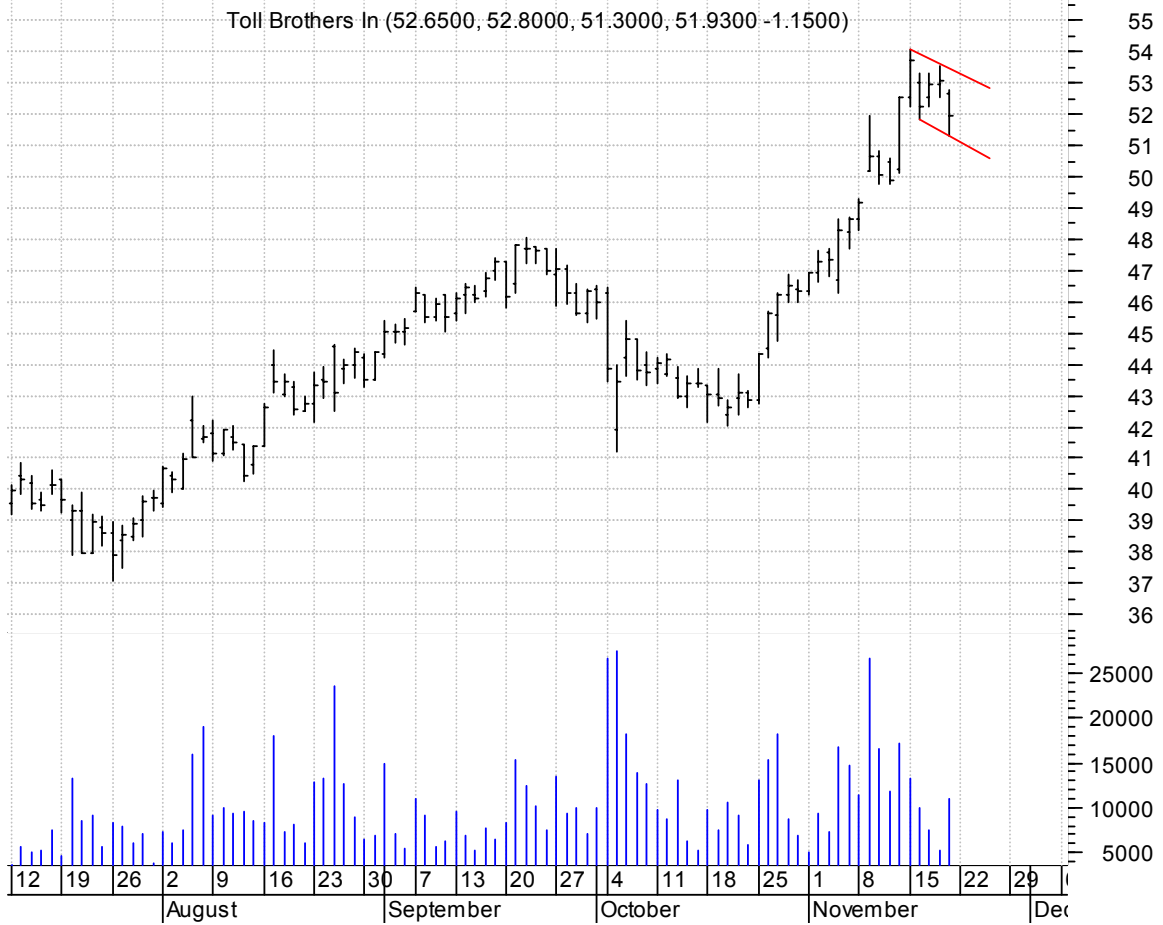
SRA INTL INC:NYS (59.4700, 59.6500, 58.0900, 58.4700 -0.9900)



STK bull flag / buy on upside brkout on increased volume



TOL bullish flagging / buy on upside brkout on increased volume



TXCO falling wedge / buy on upside breakout on increased volume

Exploration Co o (5.2200, 5.3500, 5.0400, 5.3100 +0.1100)



UPL symm. tri. / buy on upside breakout thru dotted red line on increased volume

ULTRAPETROLEUM (51.9700, 51.9700, 50.0000, 50.2000 +0.1500)



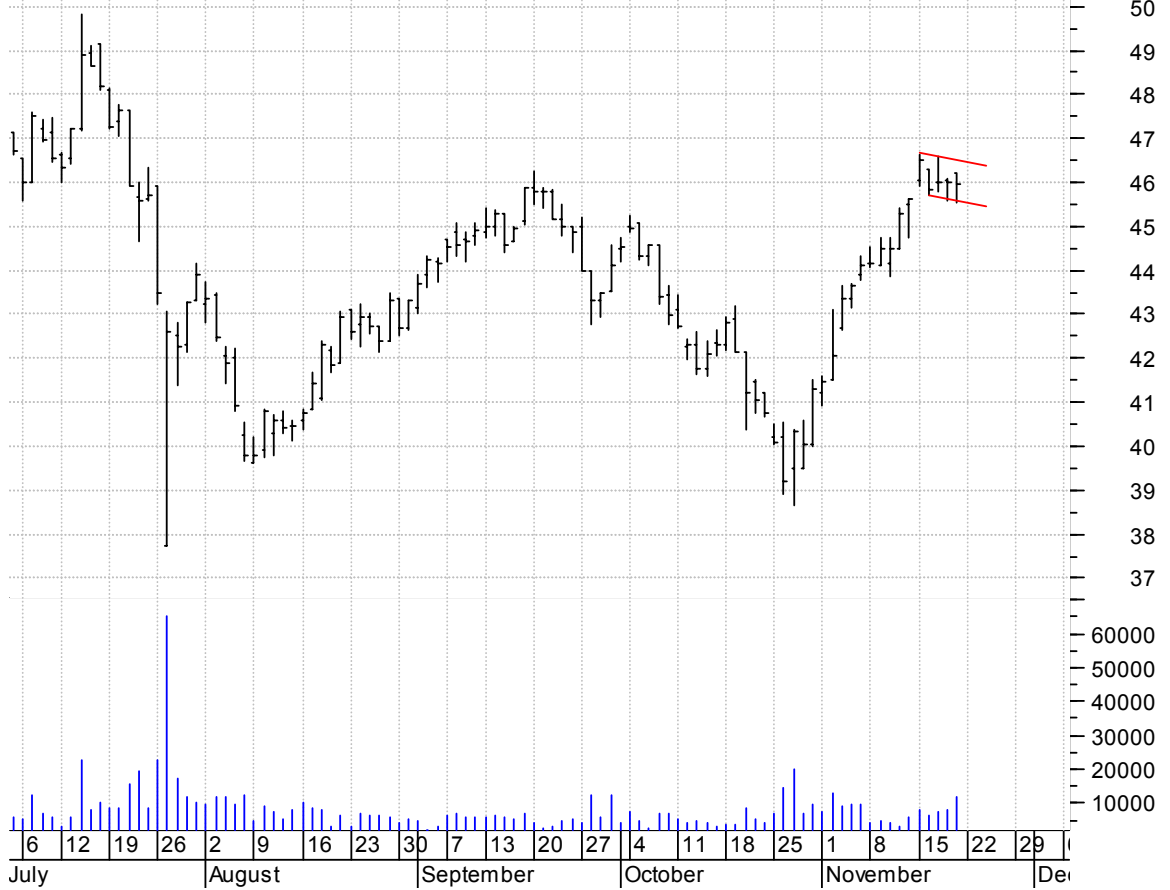
VRC symm. tri. / buy on upside brkout thru dotted red line on increased volume

Varco Intl Inc:N (27.8000, 28.4600, 27.4900, 28.2900 +0.7900)



WAT bull flag / buy on upside brkout on increased volume

Waters Corp:NYSE (46.2000, 46.2000, 45.5500, 45.9400 -0.0600)



XXIA bullish pennant / buy on upside breakout on increased volume



chartpatterns.com
Chart Pattern Analysis for Timing the Markets

KMatras@aol.com