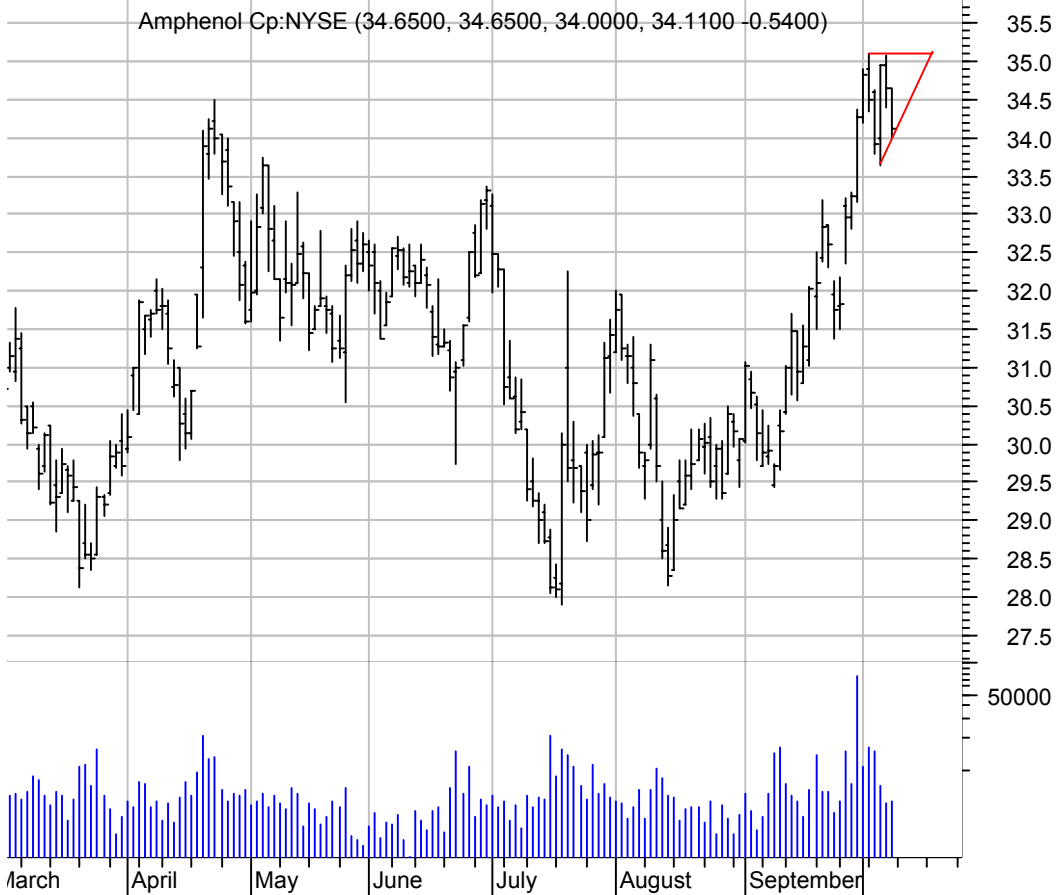


**AMT bull pennant / buy on upside brkout on increased volume**



**APH asc. tri. preceded by 'pole-like' move / buy on upside brkout on increased volume**



**ARTI bull flag / buy on upside brkout on increased volume**



**ATRS symm. tri. / buy on upside brkout on increased volume**



**ATSN symm. tri. preceded by 'pole-like' move / buy on upside brkout on increased volume**



**CBJ symm. tri. / buy on upside brkout on increased volume**



**CC symm. tri. preceded by 'pole-like' move / buy on upside brkout on increased volume**



**CHTT symm. tri. / buy on upside brkout on increased volume**



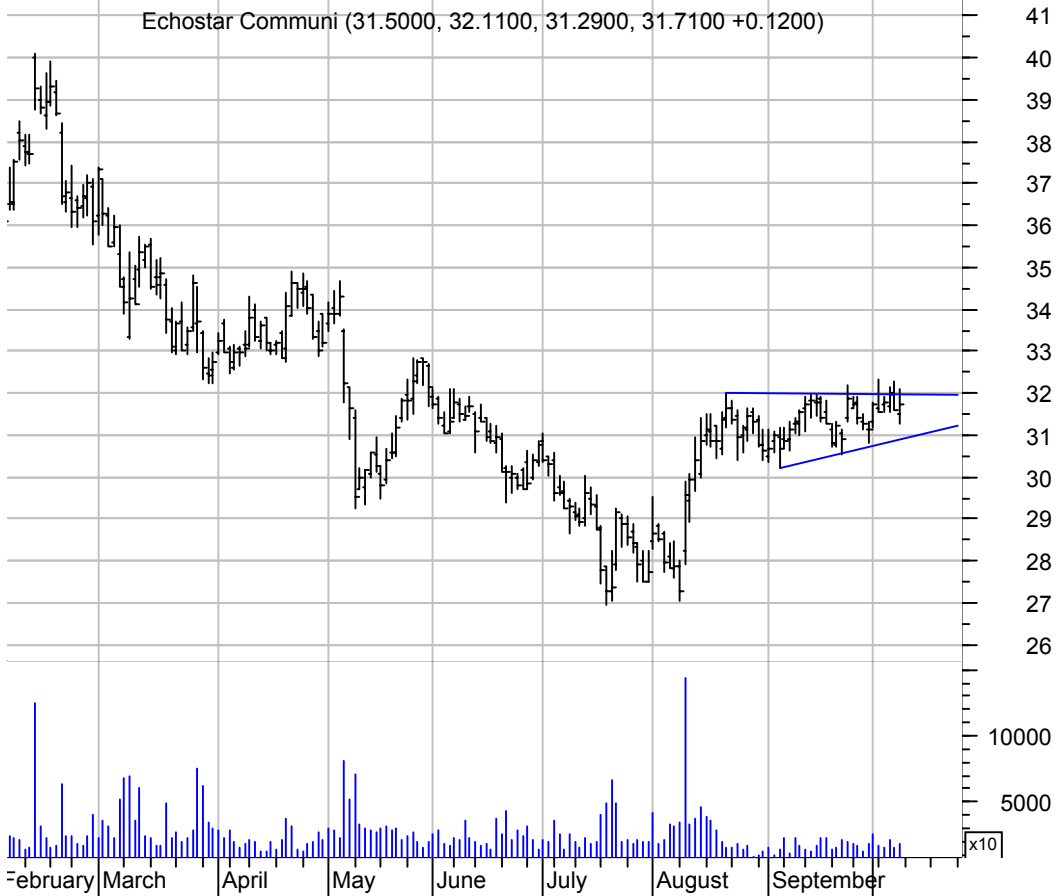
**CMVT bull pennant / buy on upside brkout on increased volume**



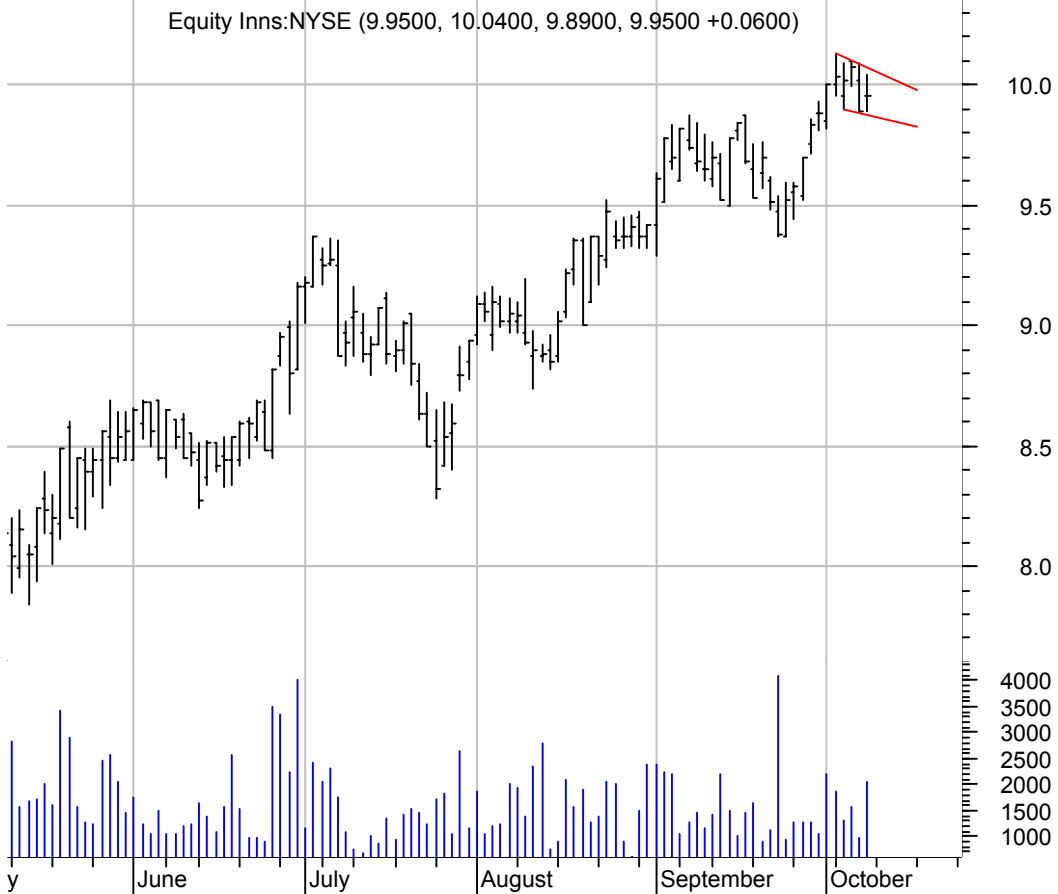
**CVH symm. tri. / buy on upside brkout on increased volume**



**DISH asc. tri. / buy on upside breakout on increased volume**



**ENN falling wedge / buy on upside breakout on increased volume**



**FDX symm. tri. / buy on upside breakout on increased volume**



**KMRT sloppy asc. tri. / buy on upside breakout on increased volume**



**KMT bullish pennant / buy on upside brkout on increased volume**



**MSA h. & sh. / sell on downside brkout on increased volume**





**MVK sloppy asc. tri. / buy on upside brkout on increased volume**



**MWV sloppy asc. tri. / buy on upside brkout on increased volume**



**NCI falling wedge preceded by 'pole-like' move / buy on upside brkout on increased volume**



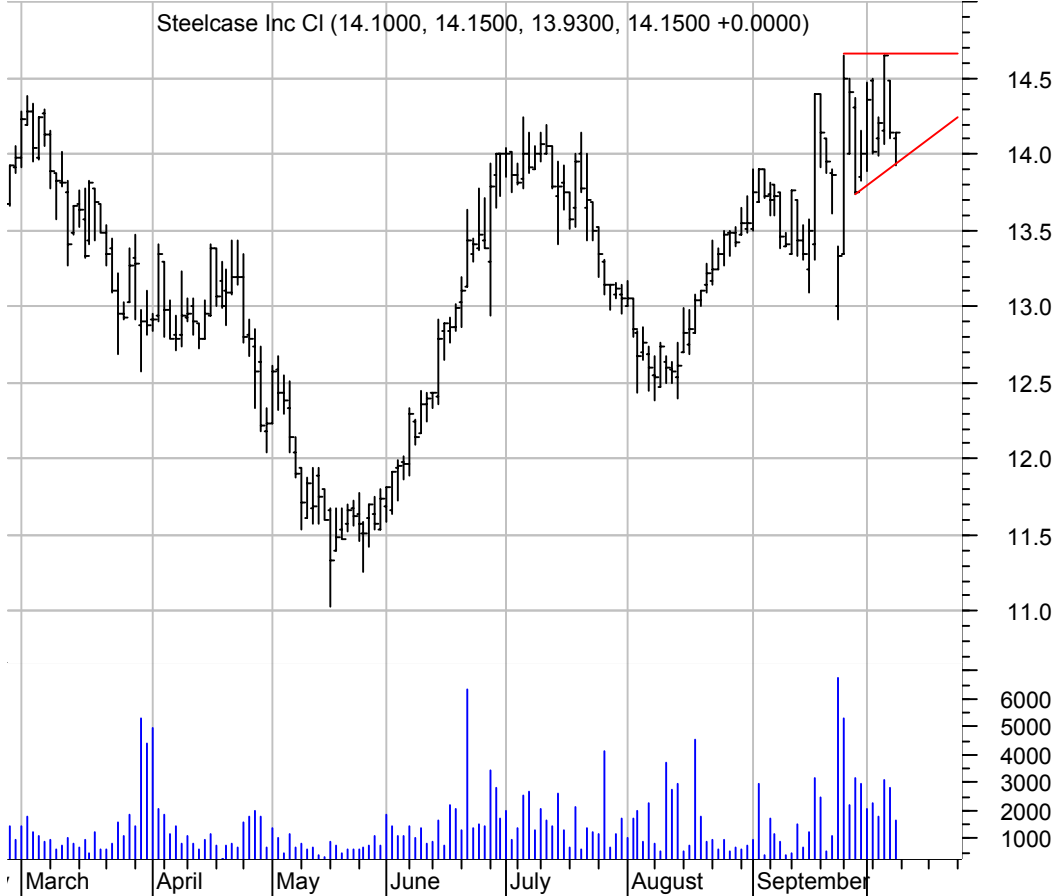
**RAH symm. tri. / buy on upside brkout on increased volume**



**RDC sloppy asc. tri. / buy on upside brkout on increased volume**



**SCS asc. tri. / buy on upside brkout on increased volume**



**VIRL rectangle / buy on upside breakout on increased volume**



**WPP rectangle / buy on upside breakout on increased volume**



**chartpatterns.com**  
Chart Pattern Analysis for Timing the Markets

[KMatras@aol.com](mailto:KMatras@aol.com)