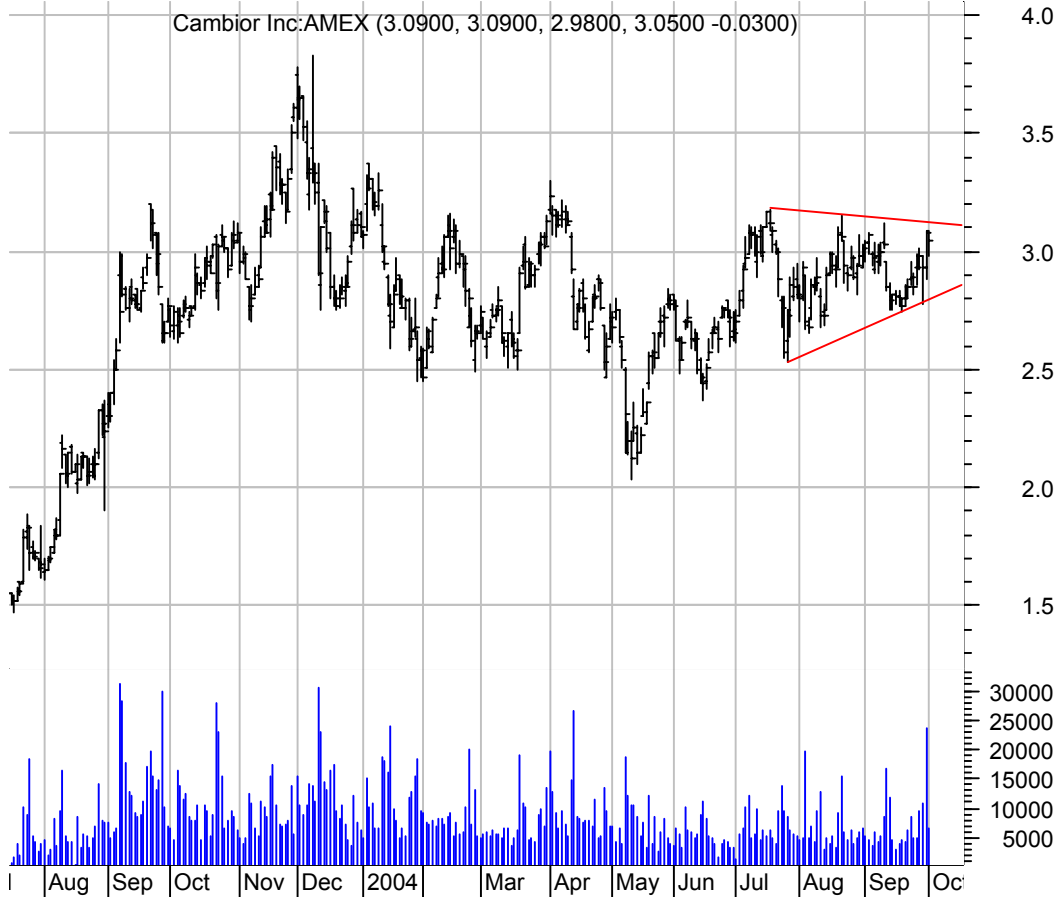


ATSN symm. tri. preceded by 'pole-like' move / buy on upside brkout on increased volume



CBJ symm. tri. / buy on upside brkout on increased volume



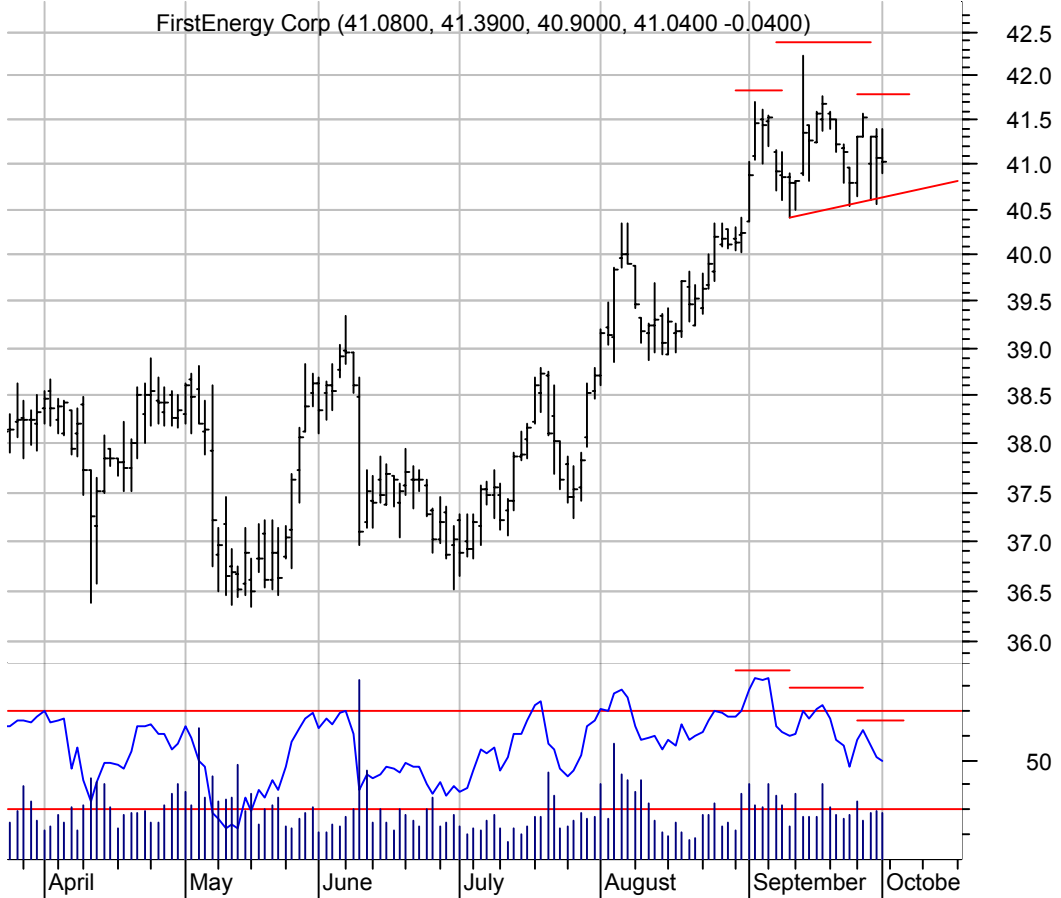
CLE symm. tri. / buy on upside brkout on increased volume



DISH sloppy asc. tri. / buy on upside brkout on increased volume



FE h. & sh. / sell on downside brkout on increased volume



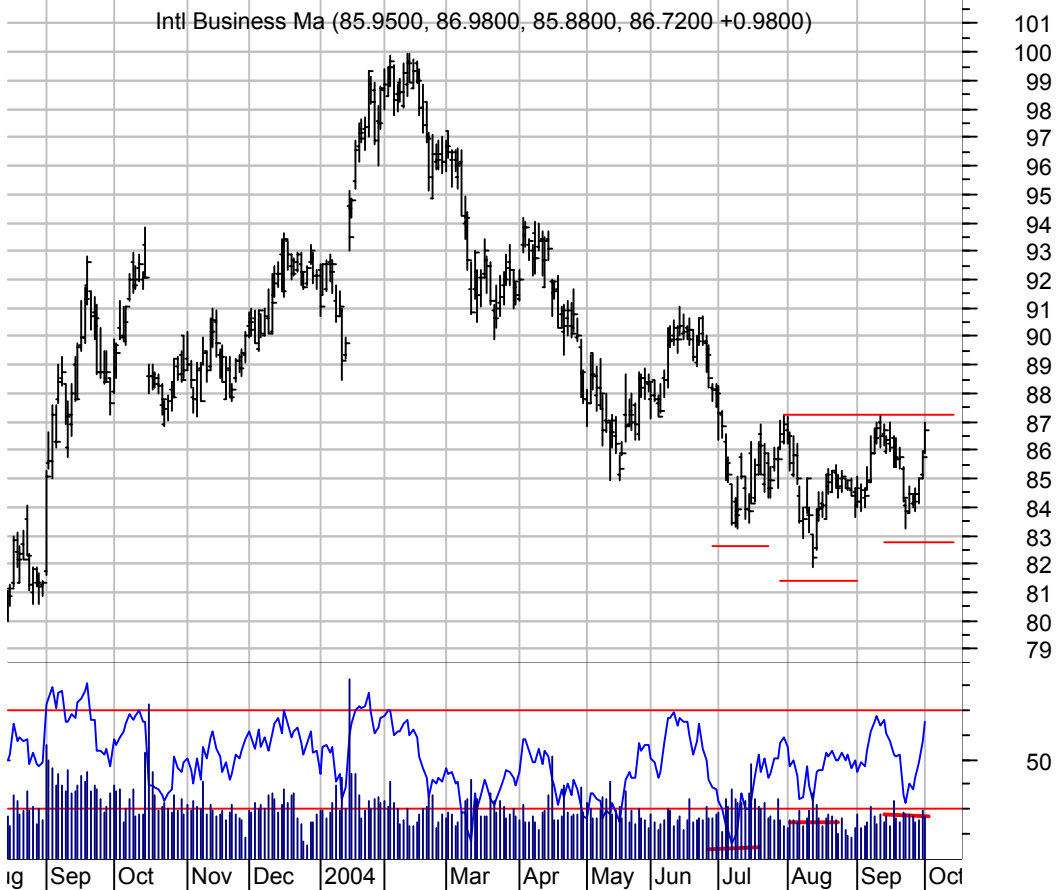
GCO sloppy asc. tri. preceded by 'pole-like' move / buy on upside brkout on increased volume



GIVN sloppy symm. tri. / buy on upside brkout on increased volume



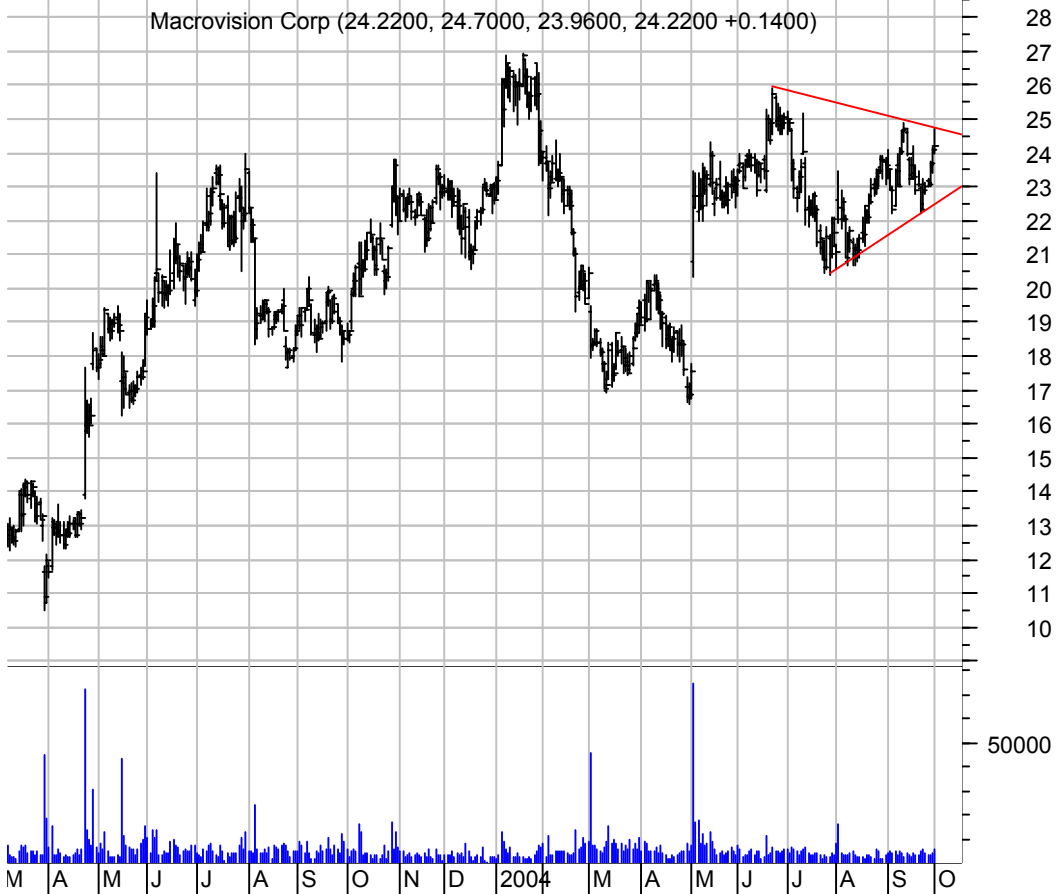
IBM inv. h. & sh. / buy on upside brkout on increased volume



MSTR bullish flag / buy on upside brkout thru dotted red line on increased volume



MVSN symm. tri. / buy on upside brkout on increased volume



OPTV bull pennant / buy on upside brkout on increased volume

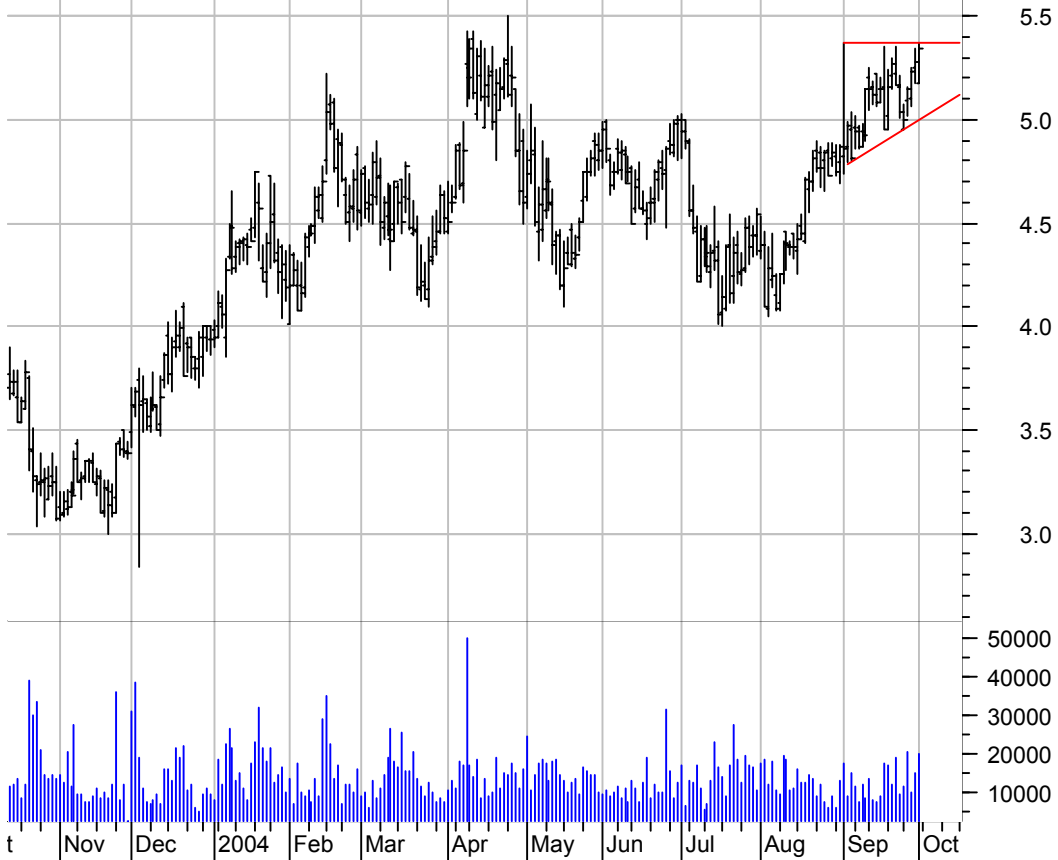


PKD symm. tri. / buy on upside follow-thru (thru dotted red line) on increased volume



PMTC asc. tri. / buy on upside breakout on increased volume

Parametric Techn (5.1800, 5.3700, 5.1800, 5.3400 +0.0600)



RAH asc. tri. / buy on upside breakout on increased volume

Ralcorp Holdings (36.2000, 36.5000, 36.0800, 36.3000 +0.2000)



RDWR asc. tri. / buy on upside breakout on increased volume



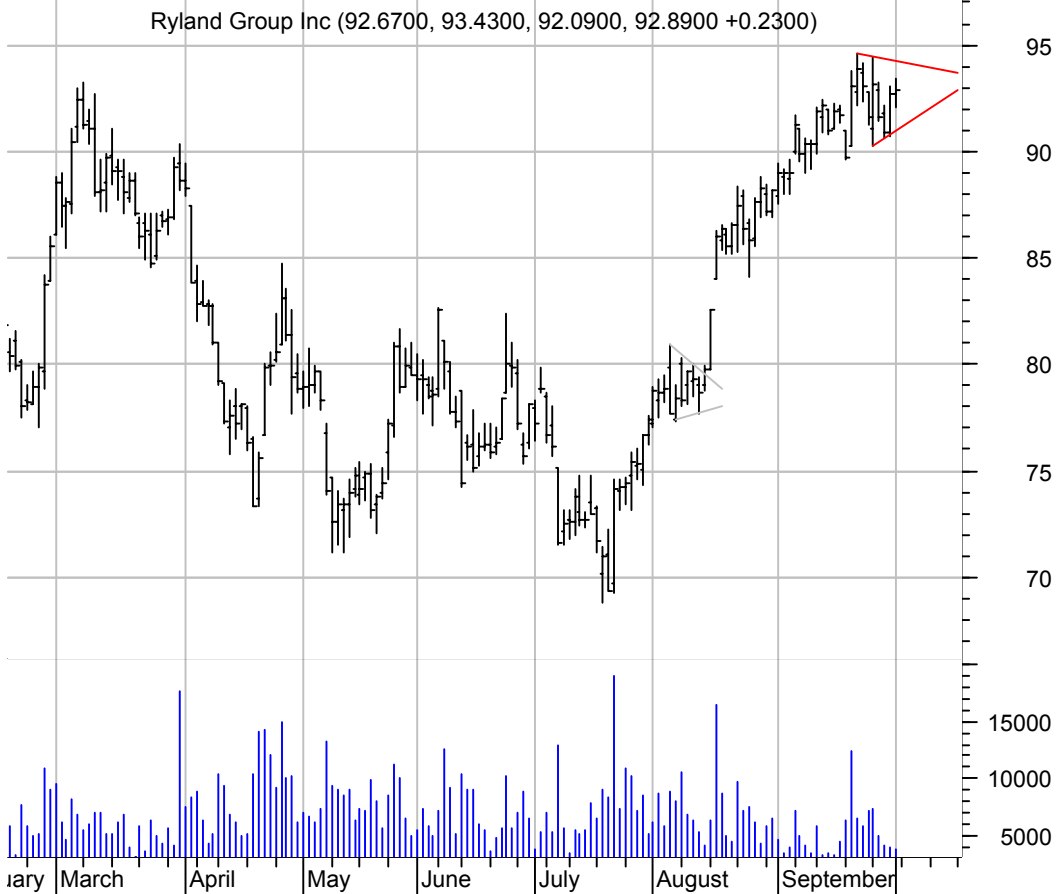
ROV asc. tri. / buy on upside breakout on increased volume



RS symm. tri. / buy on upside breakout on increased volume

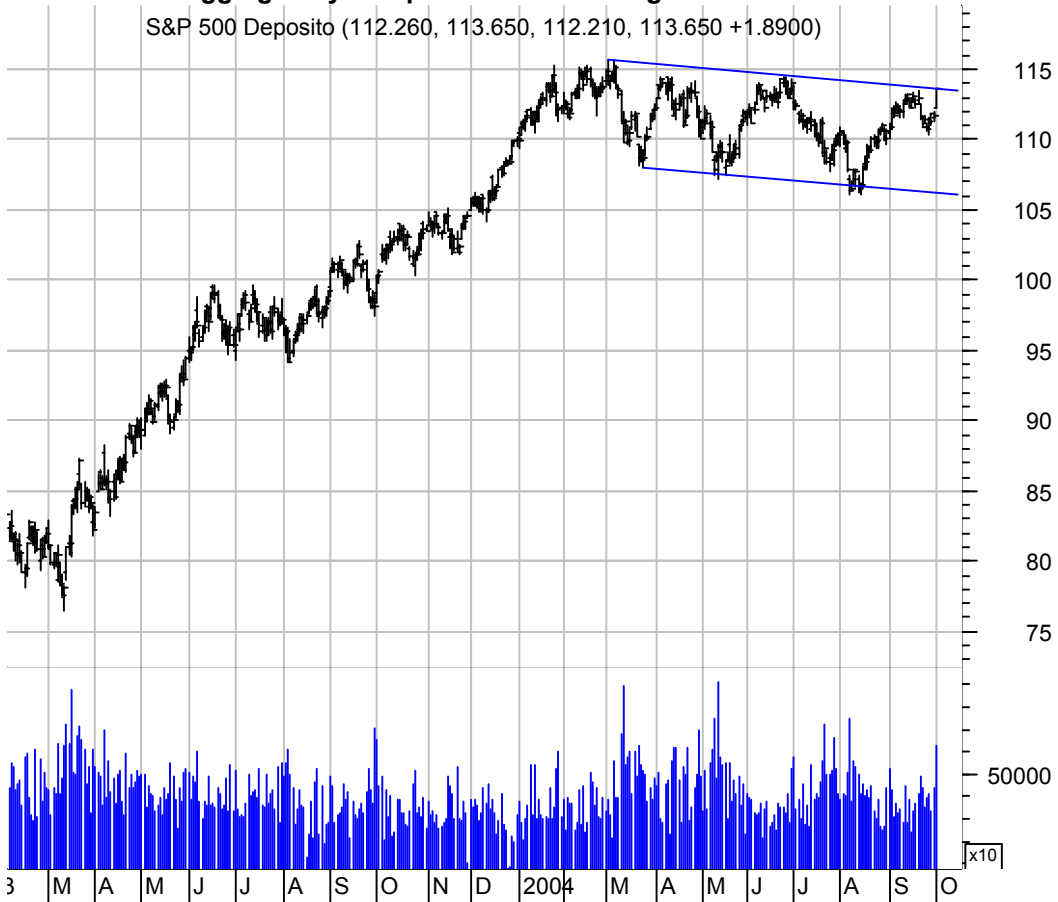


RYL symm. tri. / buy on upside breakout on increased volume



SPY bullish flagging / buy on upside breakout on larger than normal volume

S&P 500 Deposito (112.260, 113.650, 112.210, 113.650 +1.8900)



XMSR symm. tri. / buy on upside breakout on increased volume

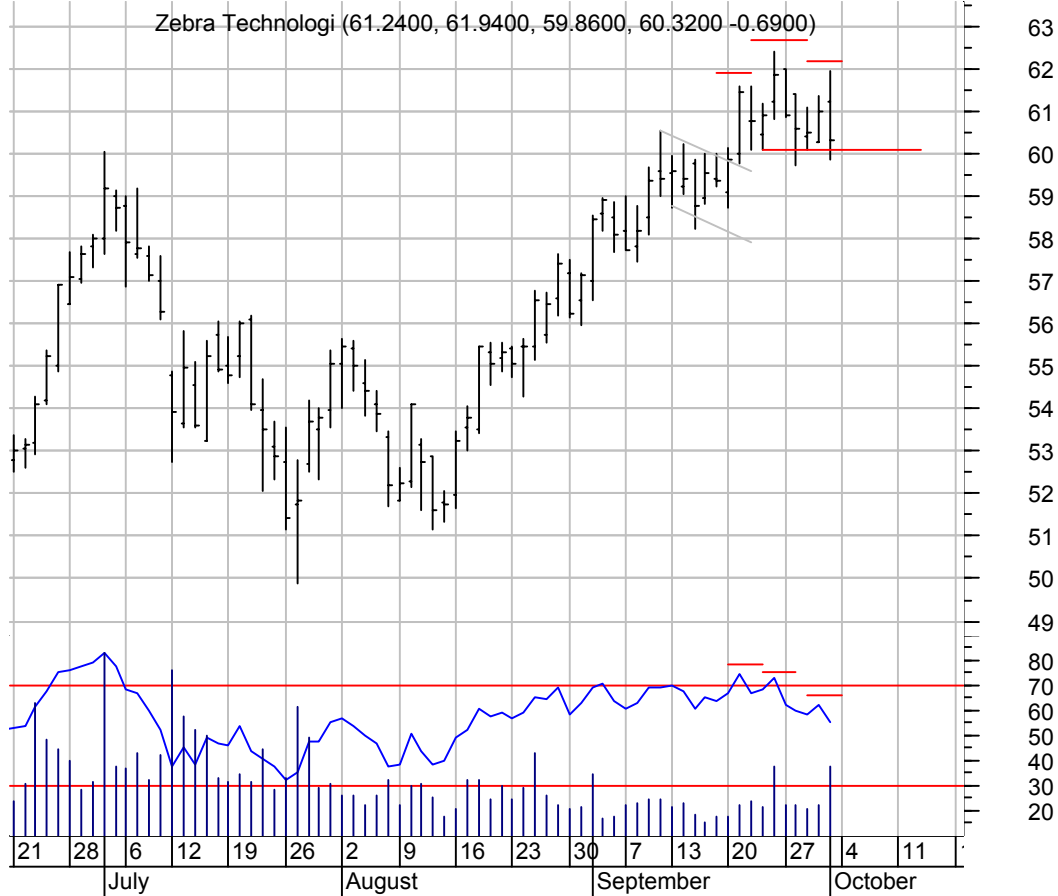
XM Satellite Rad (31.0300, 31.5300, 30.6800, 30.8600 -0.1600)



XTO asc. tri. preceded by 'pole-like' move / buy on upside brkout on increased volume



ZBRA h. & sh. / sell on downside brkout on increased volume



chartpatterns.com
Chart Pattern Analysis for Timing the Markets

KMatras@aol.com