

**BAMM symm. tri. preceded by pole-like move / buy on upside brkout on increased volume**

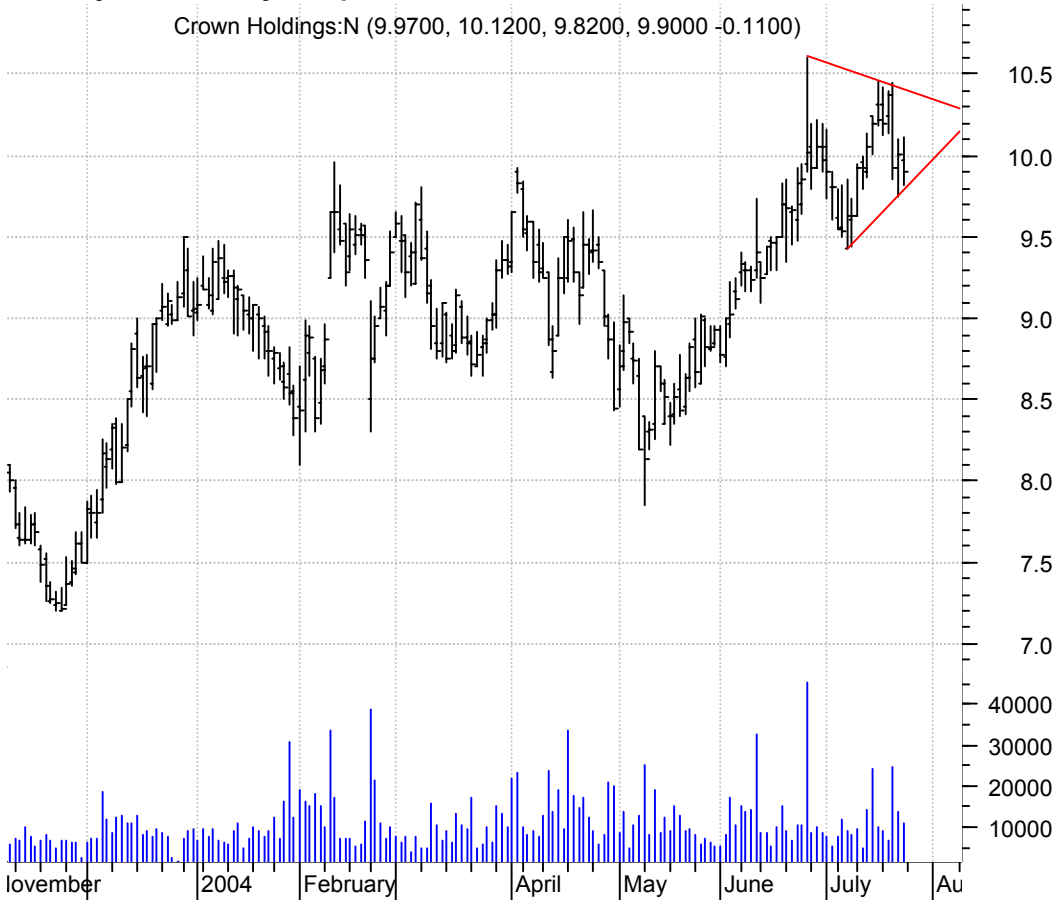


**BMI symm. tri. / buy on upside brkout on increased volume**



**CCK symm. tri. / buy on upside breakout on increased volume**

Crown Holdings:N (9.9700, 10.1200, 9.8200, 9.9000 -0.1100)



**CHIC symm. tri. / buy on upside breakout on increased volume**

Charlotte Russe (20.7900, 20.8100, 19.8400, 19.9400 -0.8800)



**DHR sloppy bull flag / buy on upside brkout on increased volume**

Danaher Corp:NYS (50.4100, 50.8800, 49.0400, 50.2800 -0.1300)



**ETN symm. tri. / buy on upside brkout on increased volume**

Eaton Corp:NYSE (62.8000, 63.3500, 61.9500, 62.2100 -0.4200)



**IMR symm. tri. preceded by 'pole-like' move / buy on upside brkout on increased volume**



**LCAV symm. tri. / buy on upside brkout on increased volume**



**LEG symm. tri. preceded by 'pole-like' move / buy on upside brkout on increased volume**



**MDC symm. tri. / buy on upside brkout on increased volume**



**NFX falling wedge / buy on upside breakout on increased volume**

Newfield Explora (56.1200, 57.0800, 56.1200, 56.6300 +0.1200)



**NLS bullish flag / buy on upside breakout thru dotted red line on increased volume**

Nautilus Group I (18.6000, 18.8400, 18.0000, 18.4100 +0.6100)



**OS sloppy asc. tri. / buy on upside brkout on increased volume**



**PCAR symm. tri. / buy on upside brkout on increased volume**



**PLT symm. tri. / buy on upside breakout on increased volume**

Plantronics Inc: (38.9000, 39.0800, 37.9100, 38.3900 -0.7600)



**ROCK falling wedge / buy on upside breakout on increased volume**

Gibraltar Steel (30.4300, 31.2500, 30.4000, 30.4000 -0.2700)





**SGMS symm. tri. / buy on upside brkout on increased volume**



**SMRT asc. tri. / buy on upside brkout on increased volume**



**UCI falling wedge / buy on upside brkout on increased volume**



**USFC bullish flag / buy on upside brkout on increased volume**



**USG sloppy asc. tri. / buy on upside brkout on increased volume**



**VCLK symm. tri. in a larger asc. tri. / buy on upside brkout thru symm. tri. on increased volume**



**XRX bullish flag (even clearer on a weekly chart) / buy on upside breakout on increased volume**



**chartpatterns.com**

Chart Pattern Analysis for Timing the Markets

[KMatras@aol.com](mailto:KMatras@aol.com)