

**ACLS symm. tri. / buy on upside breakout on increased volume**

Axcelis Technolo (11.1000, 11.2500, 10.7500, 11.0300 +0.0000)



**AEOS falling wedge / buy on upside breakout on increased volume**

American Eagle O (26.2400, 27.2600, 26.1300, 27.2400 +0.8400)



**ALDN symm. tri. / buy on upside brkout on increased volume**



**APOL symm. tri. / sell on downside brkout on increased volume**



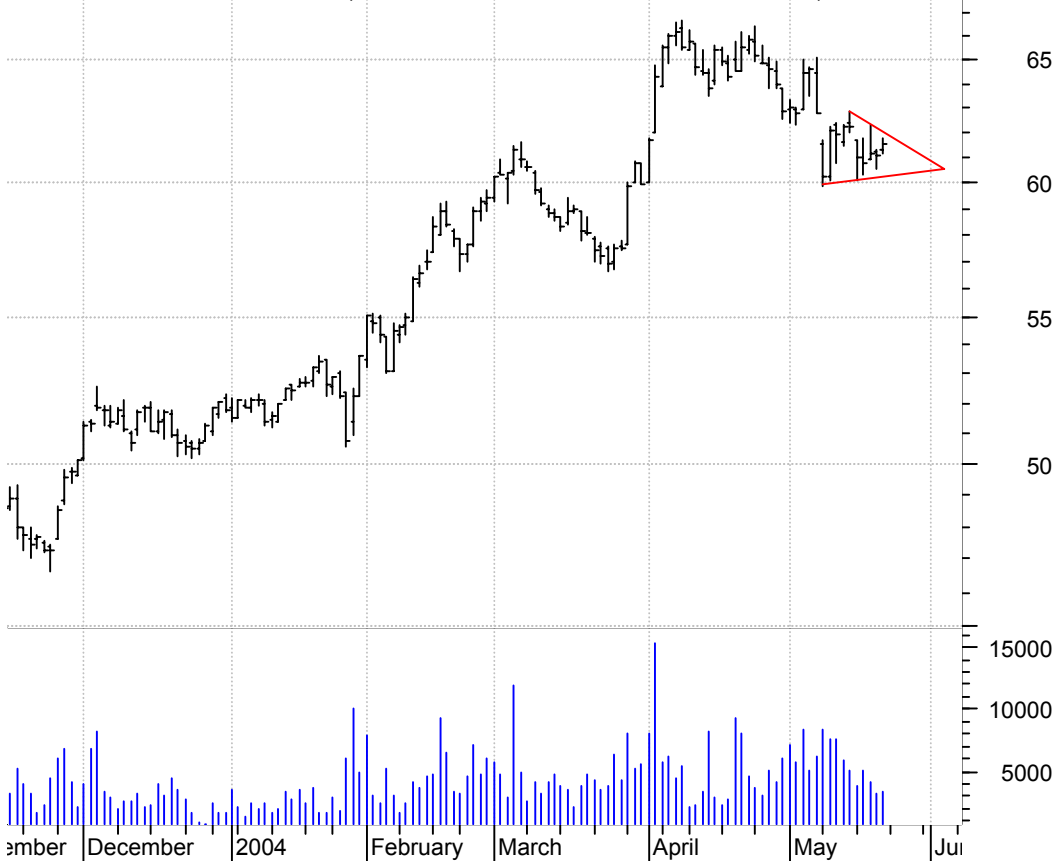
**BEV bull pennant / buy on upside brkout on increased volume**

Beverly Enterpri (7.9000, 8.0000, 7.8600, 7.9400 +0.1400)



**BOL symm. tri. / sell on downside brkout on increased volume**

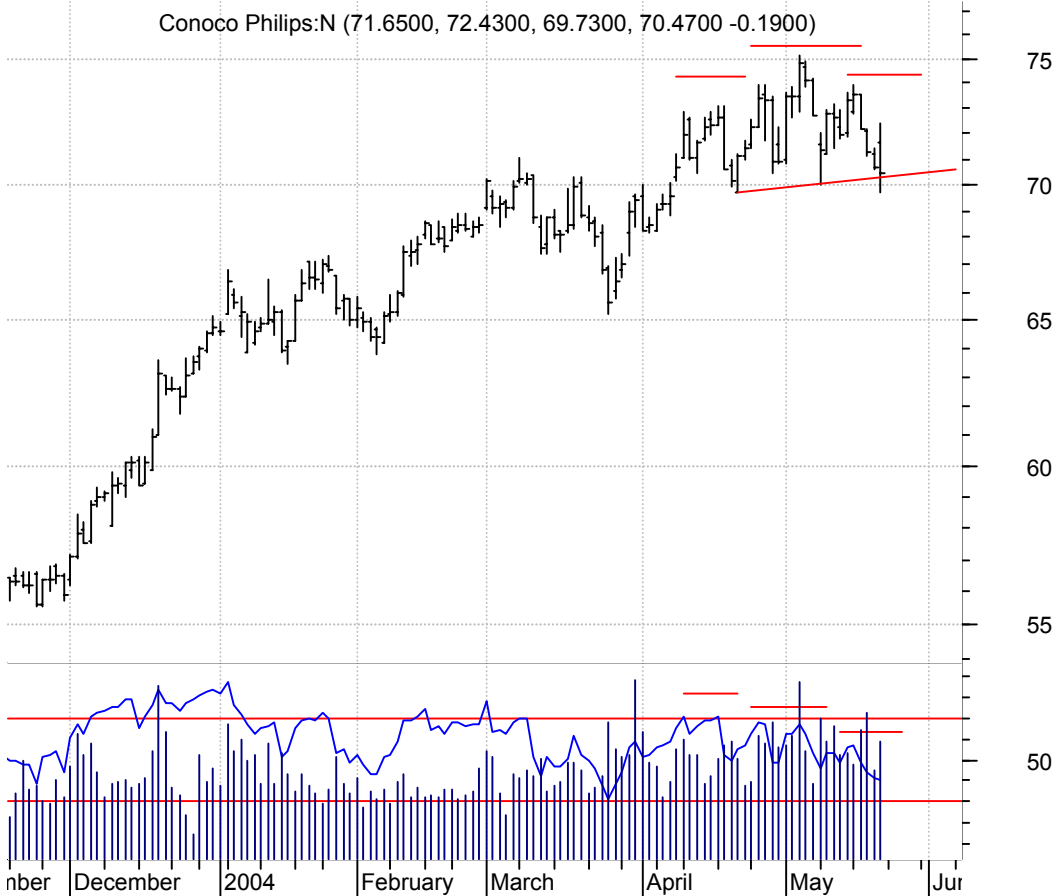
Bausch & Lomb In (61.2900, 61.7800, 61.1800, 61.5200 +0.4800)



**CBT symm. tri. / buy on upside brkout thru dotted red line on increased volume**



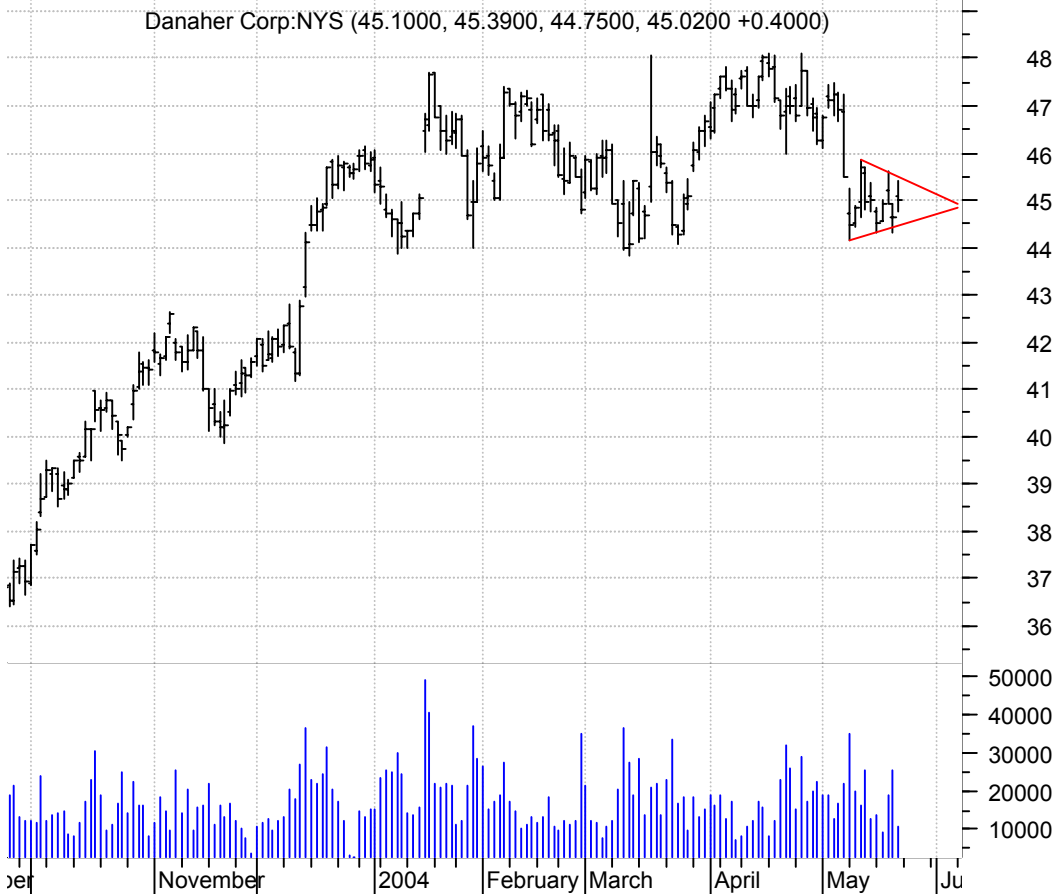
**COP h. & sh. / sell on downside brkout on increased volume**



**CVD symm. tri. / buy on upside brkout on increased volume**



**DHR symm. tri. preceded by 'pole-like' move / sell on downside brkout on increased volume**



**EFII sloppy asc. tri. / buy on upside brkout on increased volume**

Electronics For (27.1000, 27.1400, 26.7300, 27.1400 +0.2000)



**EXBD symm. tri. / buy on upside brkout on increased volume**

Corporate Execut (53.2400, 53.5000, 53.0400, 53.1700 +0.0700)



**FMC desc. tri. / sell on downside brkout on increased volume**

FMC Cp:NYSE (39.3000, 39.4000, 38.8000, 39.0300 -0.2000)



**KMRT bull pennant / buy on upside brkout on increased volume**

KMART HLDG CP:OT (48.3300, 49.7500, 47.8000, 49.1100 +0.9100)



**LFUS asc. tri. / buy on upside brkout on increased volume**

Littel Fuse Inc: (36.8300, 37.9500, 36.5100, 37.8500 +1.3200)



**LHO symm. tri. / buy on upside brkout on increased volume**

Lasalle Hotel Pr (22.6200, 22.9500, 22.4900, 22.9300 +0.4100)





**LIFC symm. tri. / buy on upside brkout on increased volume**

Lifecell Cp:OTC (10.3000, 10.7200, 10.0900, 10.5100 +0.2400)



**LTR falling wedge / buy on upside brkout on increased volume**

Loews Corp:NYSE (58.5800, 58.9400, 58.1600, 58.3100 -0.0400)



**MACR asc. tri. / buy on upside breakout on increased volume**



**MCHP symm. tri. / buy on upside breakout on increased volume**



**MU desc. tri. preceded by 'pole-like' move / sell on downside brkout on increased volume**



**NMNS falling wedge / buy on upside brkout on increased volume**



**ODFL symm. tri. / buy on upside brkout on increased volume**



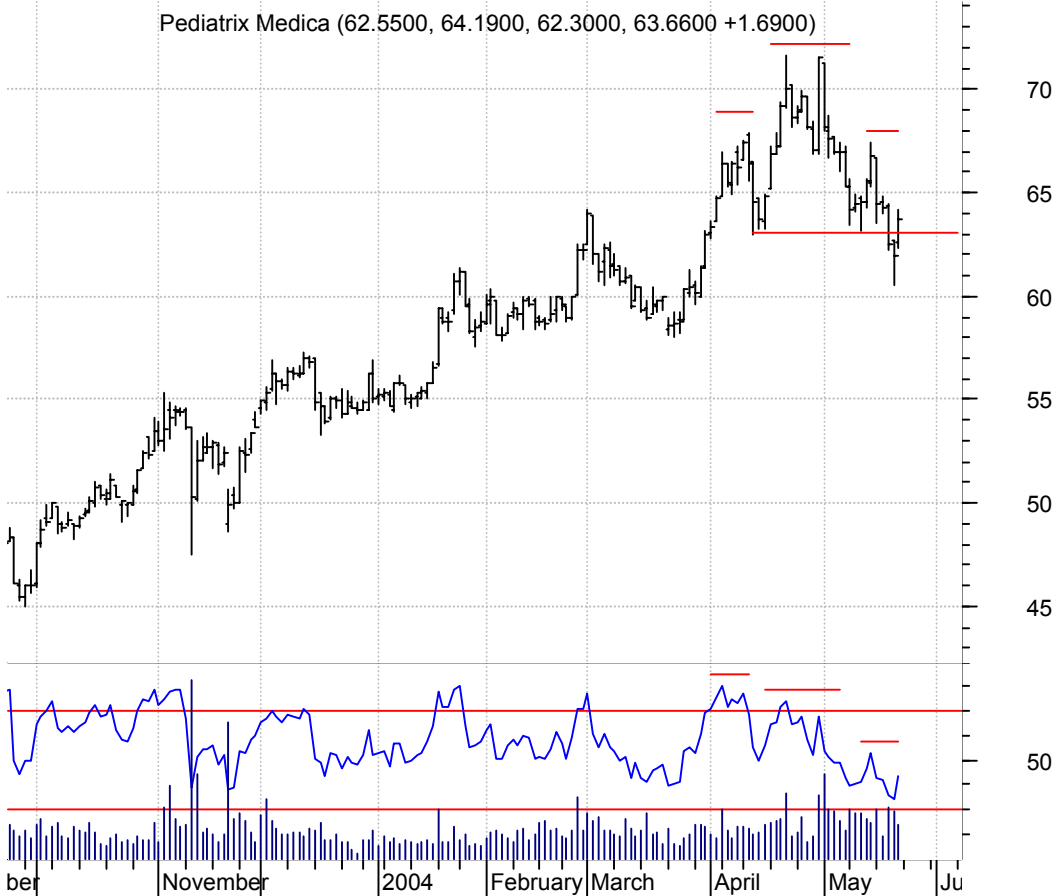
**OS symm. tri. / buy on upside brkout on increased volume**



**OSG symm. tri. / buy on upside brkout on increased volume**

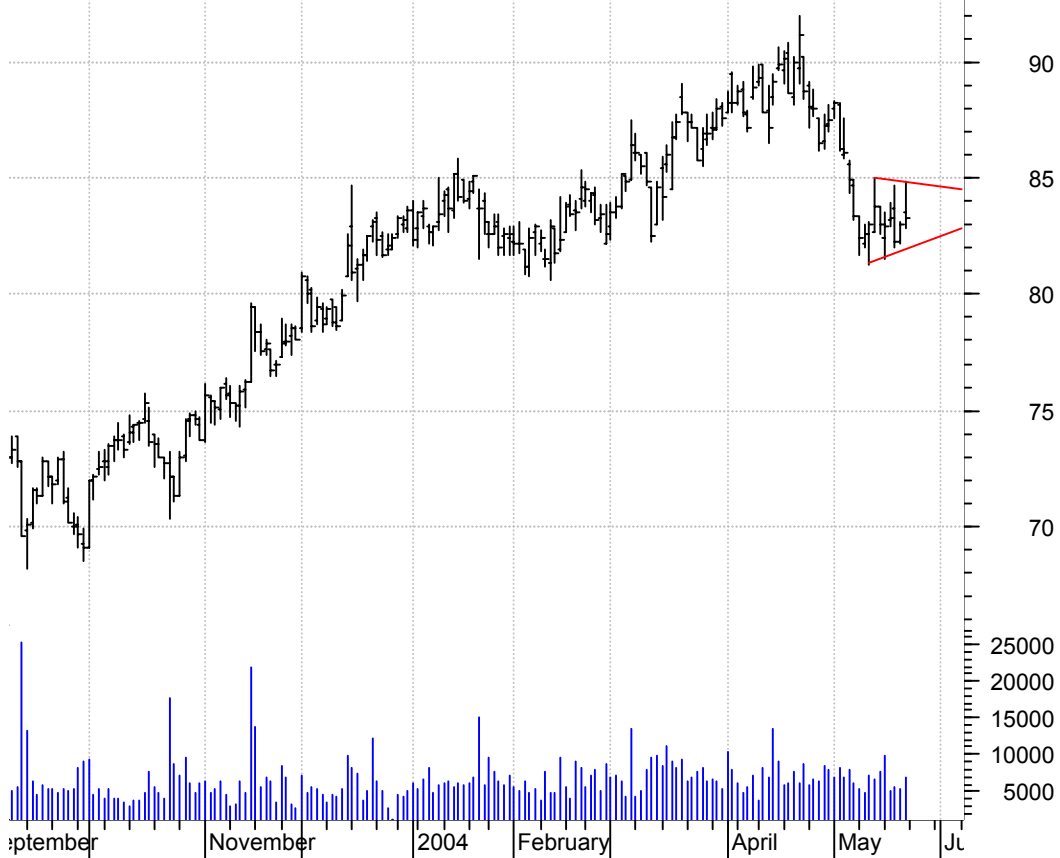


**PDX h. & sh. brkout (& retracement) / sell on new brkt thru the neckline on increased volume**



**PGR symm. tri. preceded by 'pole-like' move / sell on downside brkout on increased volume**

Progressive Corp (83.5000, 84.8500, 82.8300, 83.2900 +0.2900)



**PLT symm. tri. preceded by 'pole-like' move / buy on upside brkout on increased volume**

Plantronics Inc: (38.0300, 38.5700, 37.8000, 38.3600 +0.4000)



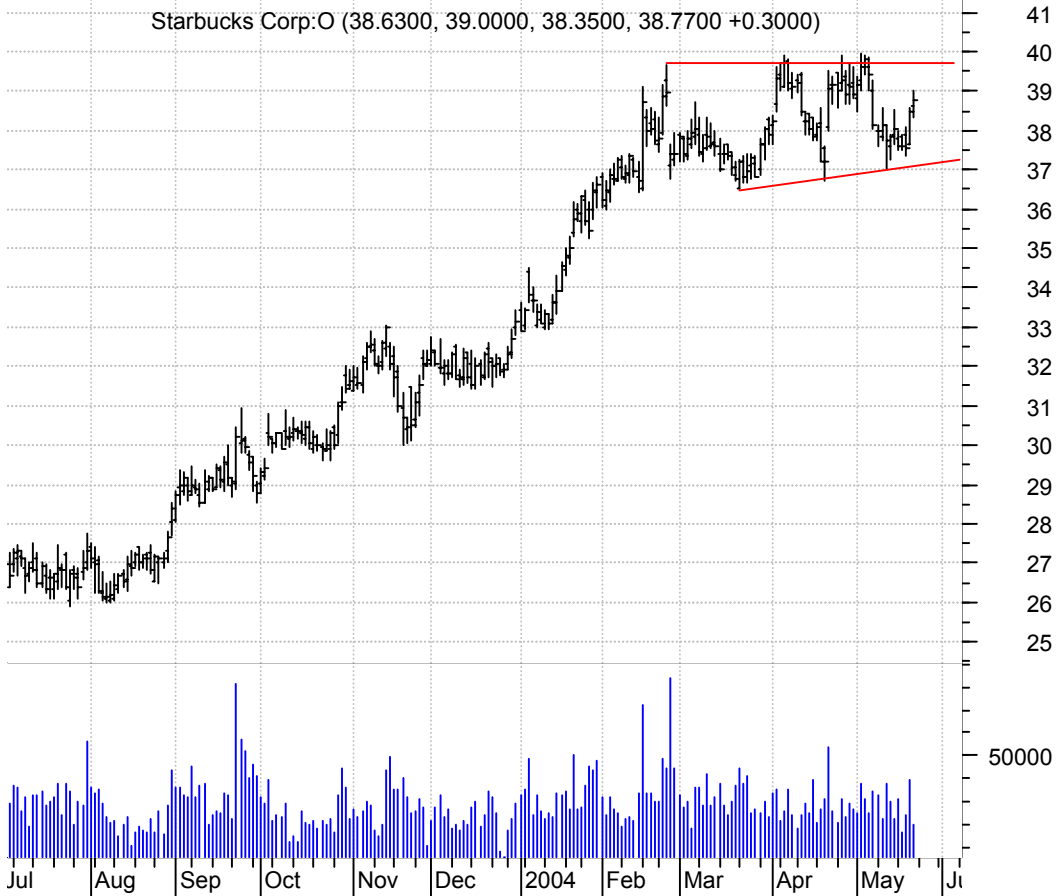
**PLXT bullish pennant / buy on upside brkout on increased volume**

PLX Technology I (14.0500, 14.2600, 13.7100, 13.7900 -0.1700)



**SBUX asc. tri. / buy on upside brkout on increased volume**

Starbucks Corp:O (38.6300, 39.0000, 38.3500, 38.7700 +0.3000)



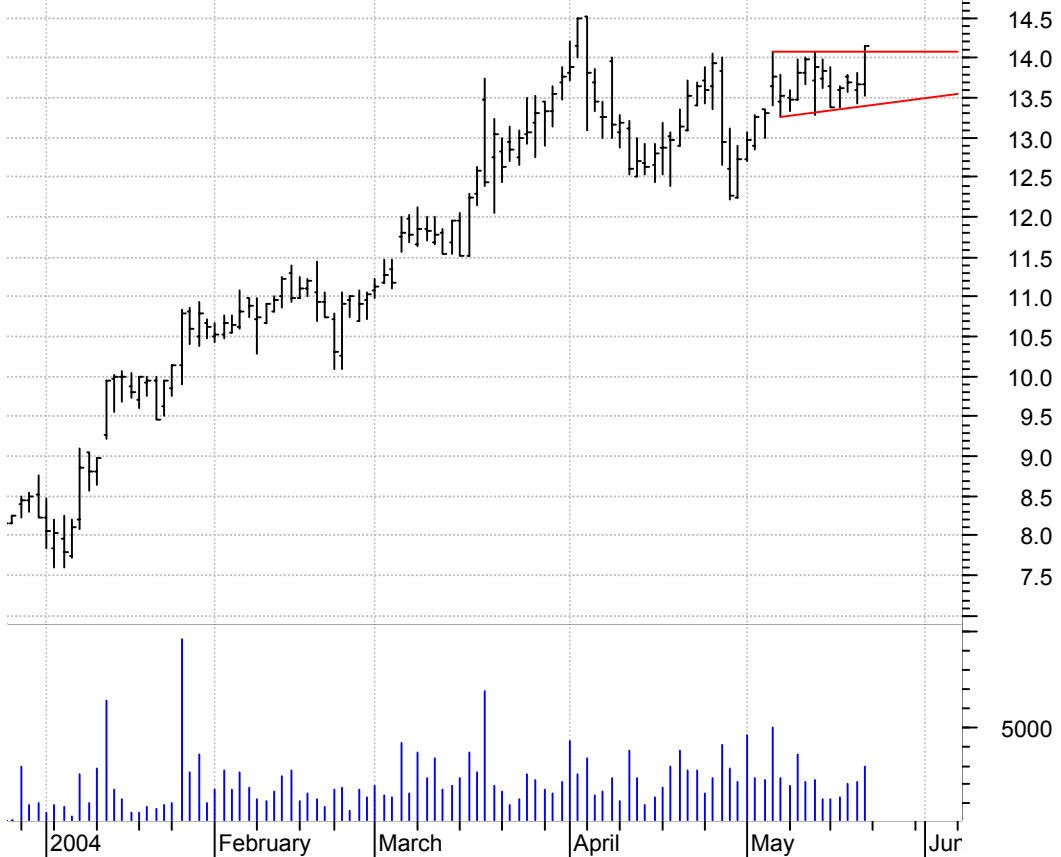
**SFN sloppy symm. tri. (discounting spike day) / buy on upside brkout on increased volume**

Spherion Corp:NY (9.2300, 9.2500, 9.1400, 9.2300 +0.1400)



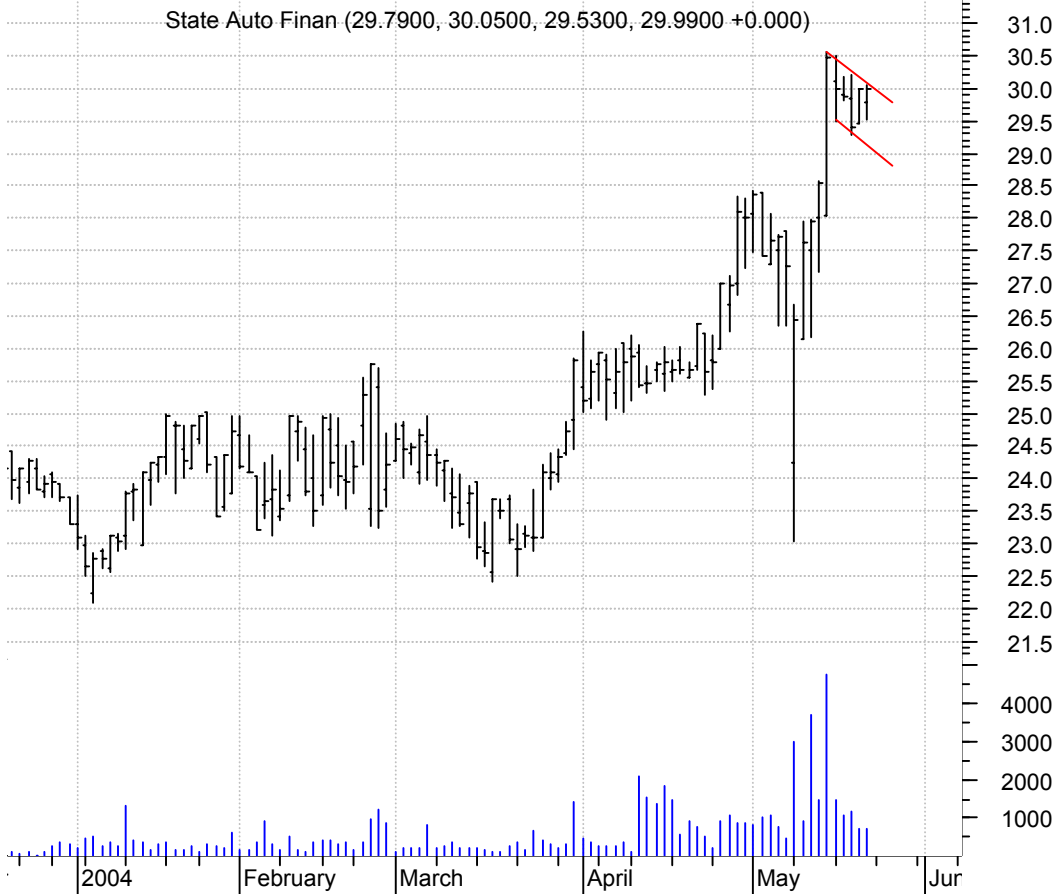
**SMRT asc. tri. brkout / buy and use bottom of pattern (asc. trendline) as a failure point**

Stein Mart Inc:O (13.6800, 14.1600, 13.5200, 14.1600 +0.4800)





**STFC bull flag / buy on upside brkout on increased volume**



**STOSY bullish flagging / buy on upside brkout on increased volume**



**TESS symm. tri. / buy on upside breakout on increased volume**



**WCC symm. tri. / buy on upside breakout thru dotted red line on increased volume**



**WMGI asc. tri. / buy on upside brkout on increased volume**



**WOOF asc. tri. / buy on upside brkout on increased volume**



**ZMH bullish flag brkout / buy on upside brkout thru dotted red line on increased volume**



**chartpatterns.com**  
Chart Pattern Analysis for Timing the Markets

[KMatras@aol.com](mailto:KMatras@aol.com)