

**AEOS falling wedge / buy on upside brkout on increased volume**

American Eagle O (26.2800, 27.0300, 25.5600, 25.6600 -0.7500)



**AMED symm. tri. / buy on upside brkout on increased volume**

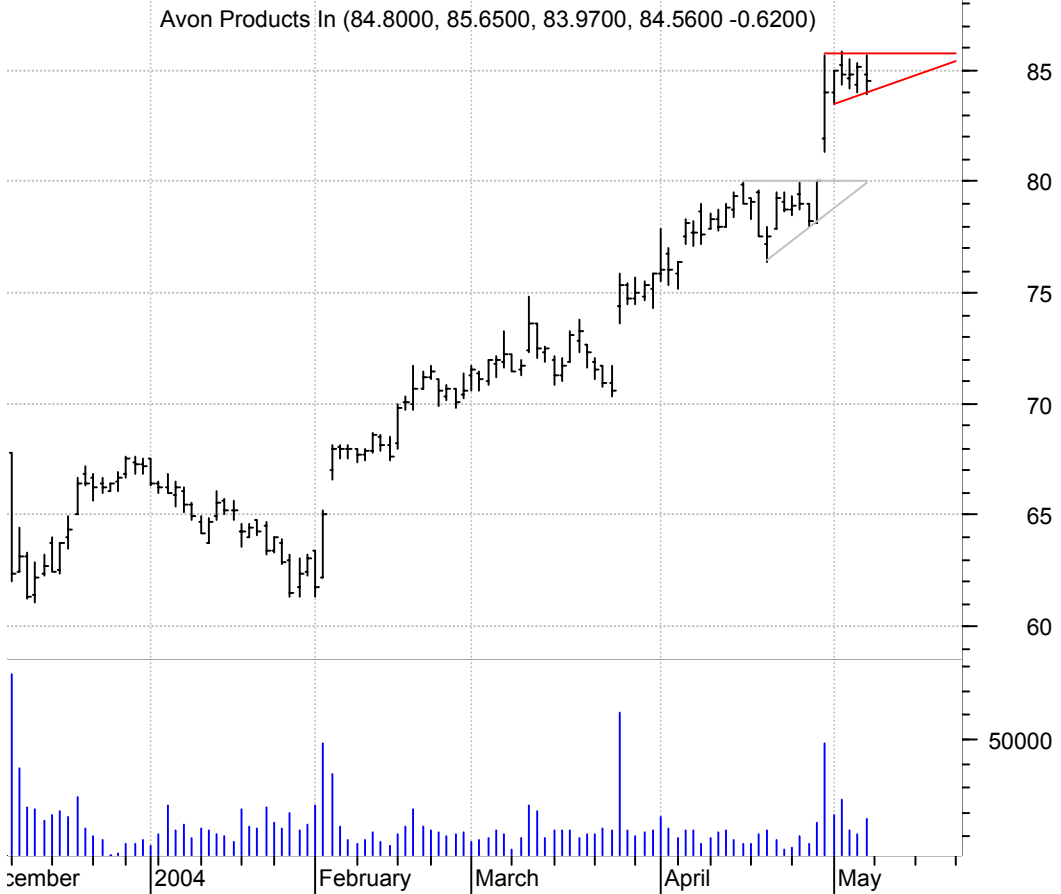
Amedisys Inc:OTC (27.8200, 29.3900, 27.8000, 28.6900 +0.6600)



**APH symm. tri. / buy on upside breakout on increased volume**



**AVP asc. tri. preceded buy 'pole-like' move / buy on upside breakout on increased volume**



**BID symm. tri. / buy on upside breakout on increased volume**

Sotheby's Holdin (13.4000, 13.7400, 13.1000, 13.1000 -0.3700)



**CKFR symm. tri. / buy on upside breakout on increased volume**

Checkfree Corp:O (30.4700, 31.1600, 30.2900, 30.4500 -0.3100)



**CVNS falling wedge preceded by 'pole-like' move / buy on upside breakout on increased volume**



**DNYY falling wedge preceded by 'pole-like' move / buy on upside breakout on increased volume**



**HOT symm. tri. / buy on upside brkout on increased voulme**



**HUBG symm. tri. / buy on upside brkout on increased volume**



**KNSY falling wedge preceded by 'pole-like' move / buy on upside brkout on increased volume**



**KOOL rectangle / buy on upside brkout on increased volume**



**MDCO falling wedge / buy on upside brkout on increased volume**



**MNST desc. tri. preceded by 'pole-like' move / sell on downside brkout on increased volume**



**NOBL symm. tri. / buy on upside brkout on increased volume**

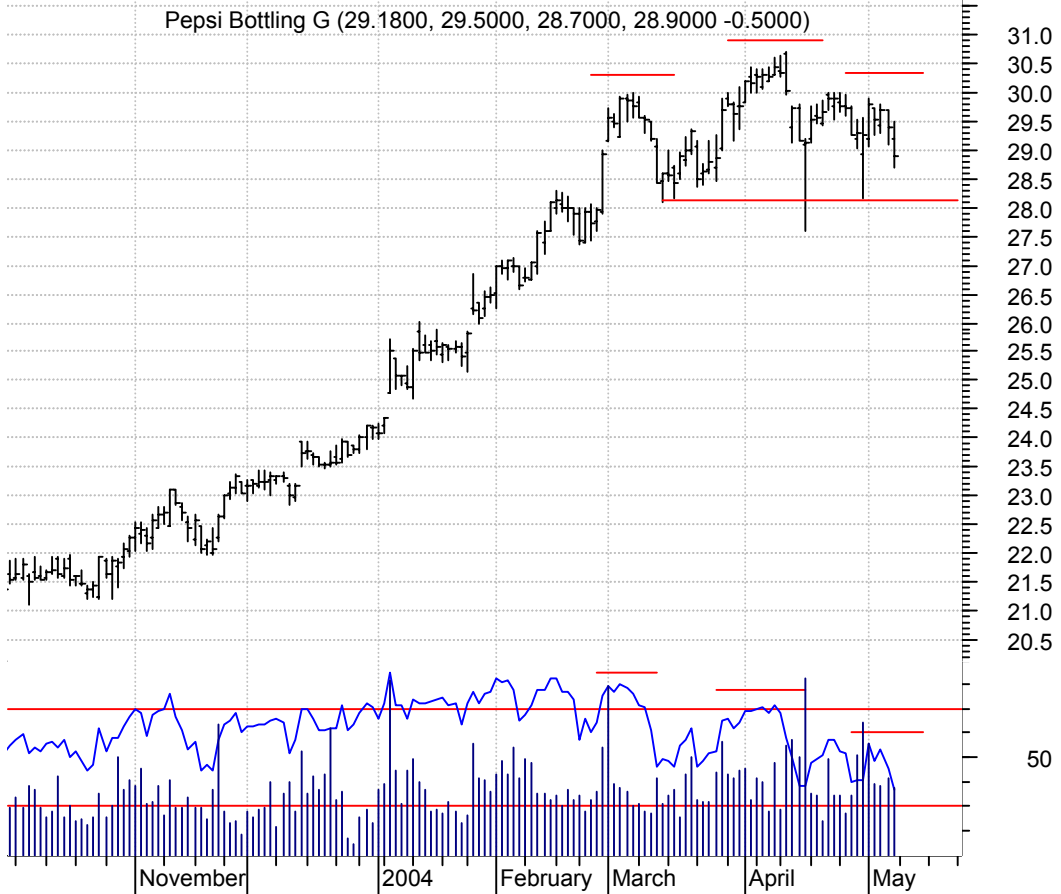


**NSC falling wedge preceded by 'pole-like' move / buy on upside brkout on increased volume**





**PBG h. & sh. / sell on downside brkout on increased volume**



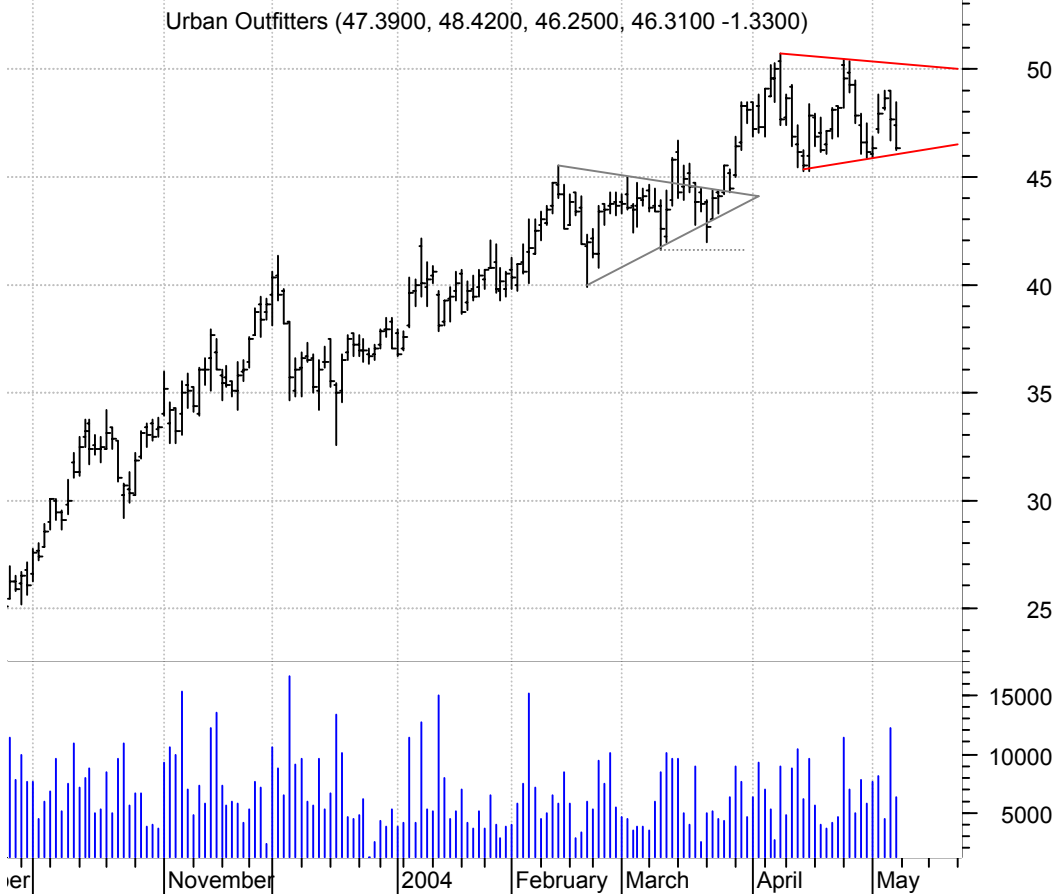
**ROG symm. tri. preceded by 'pole-like' move / buy on upside brkout on increased volume**



**SWN symm. tri. / buy on upside brkout on increased volume**



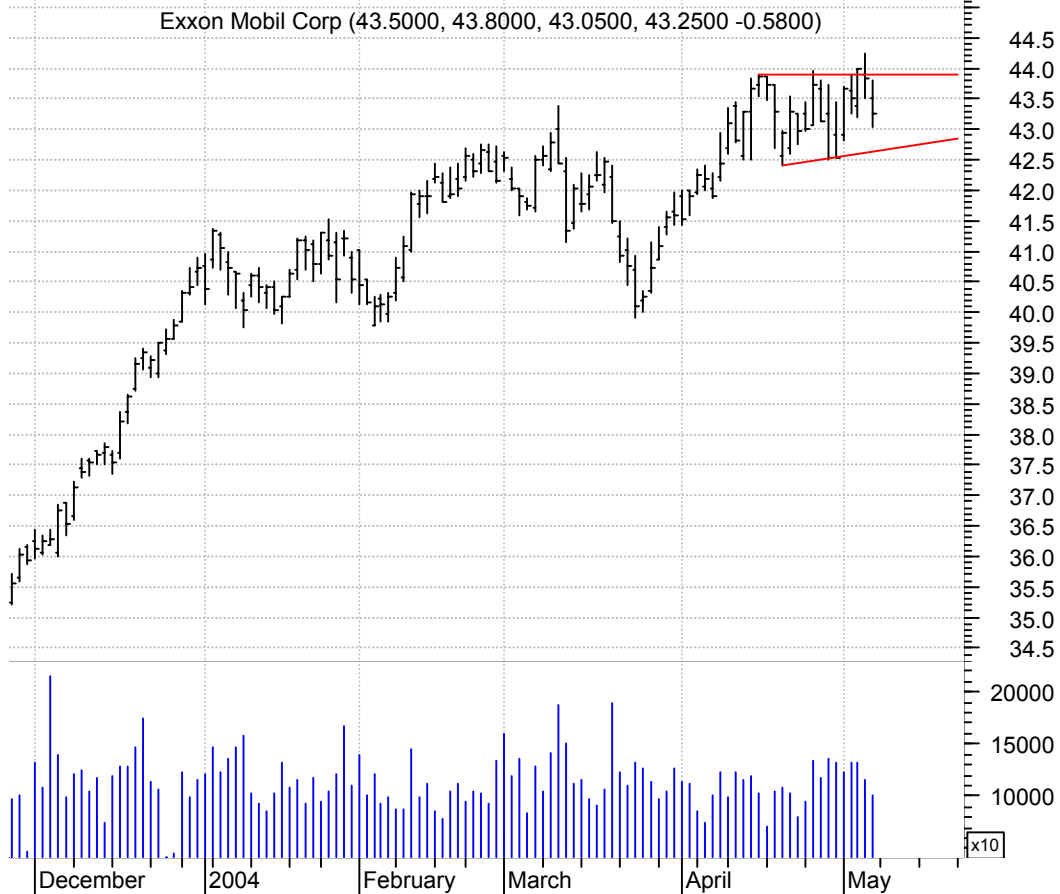
**URBN symm. tri. / buy on upside brkout on increased volume**



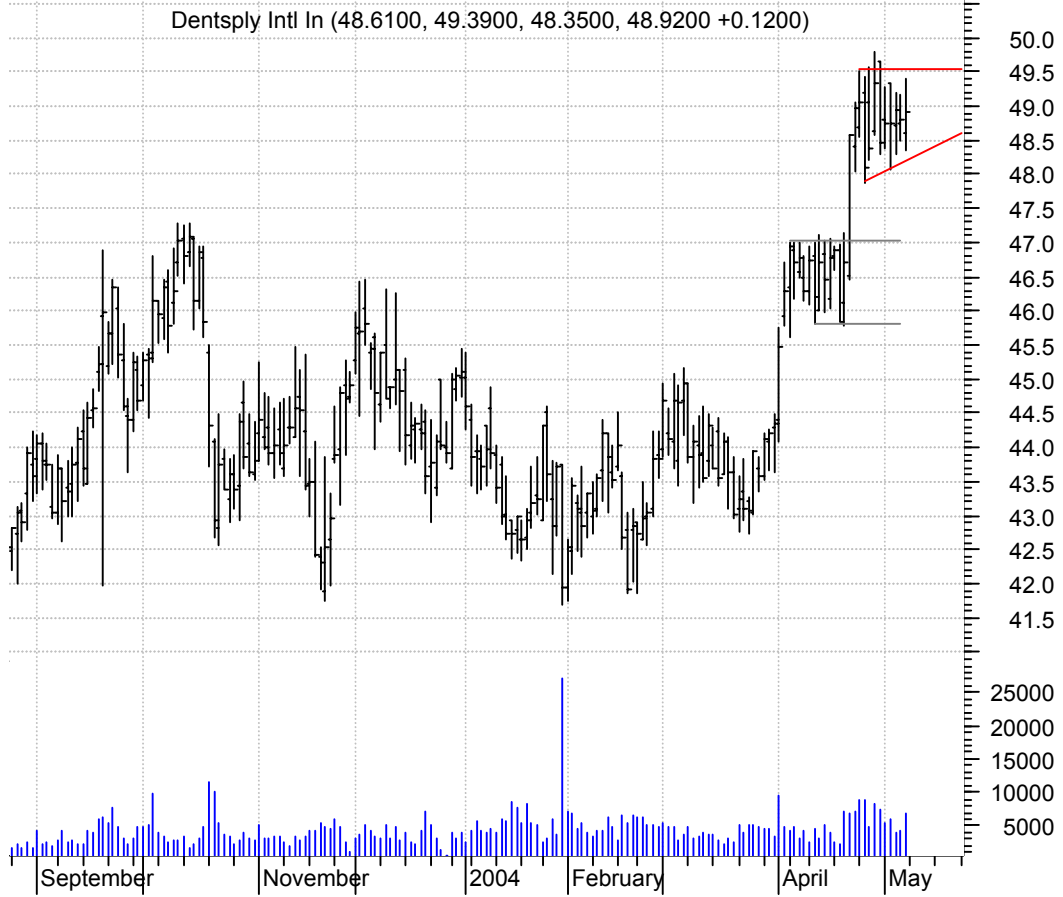
**VASC symm. tri. / buy on upside brkout on increased volume**



**XOM asc. tri. / buy on upside brkout on increased volume**



**XRAY sloppy acs. tri. preceded by 'pole-like' move / buy on upside brkout on increased volume**



**XTO symm. tri. / buy on upside brkout on increased volume**



**chartpatterns.com**  
Chart Pattern Analysis for Timing the Markets

[KMatras@aol.com](mailto:KMatras@aol.com)