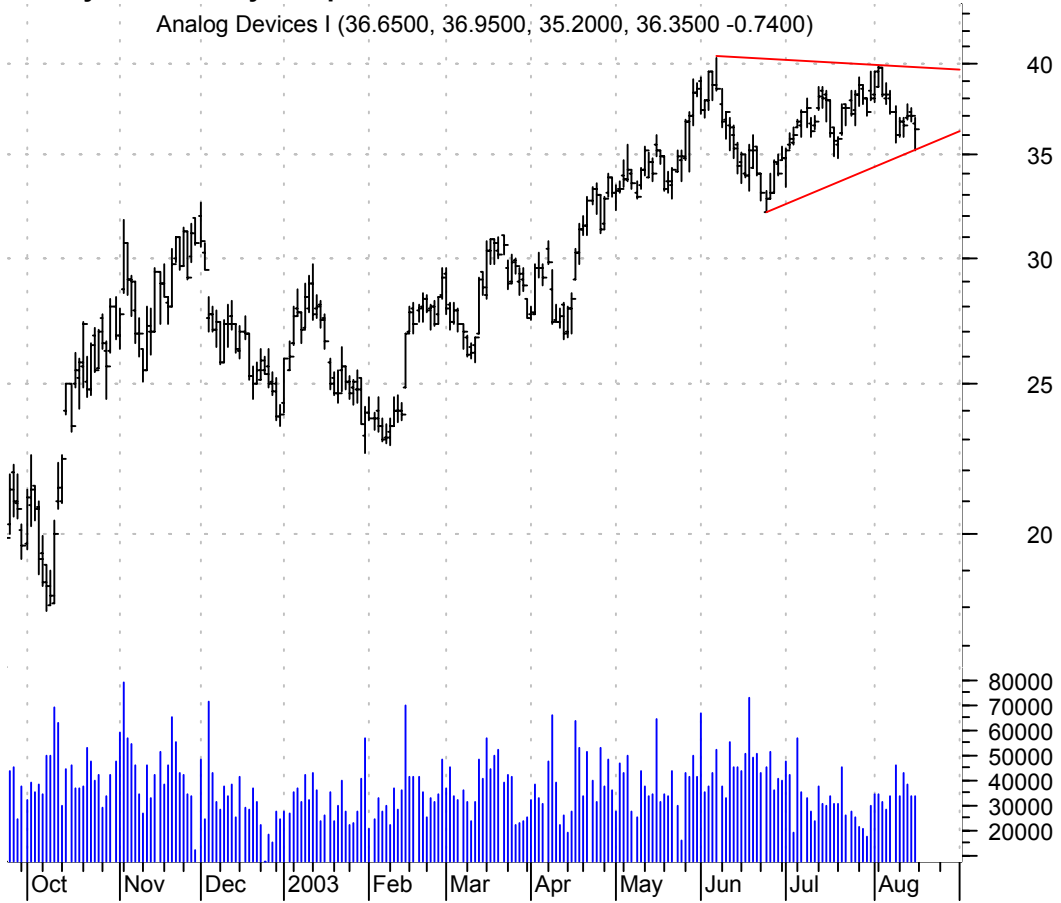


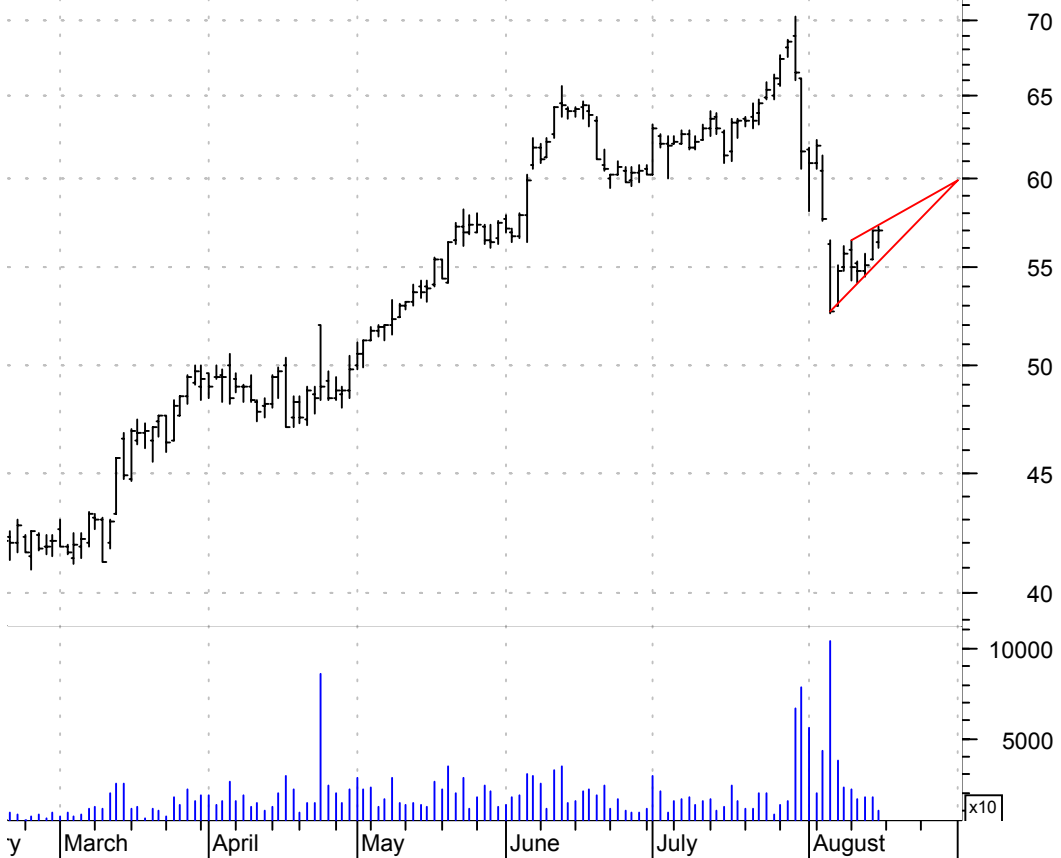
ADI symm. tri. / buy on upside brkout on increased volume

Analog Devices I (36.6500, 36.9500, 35.2000, 36.3500 -0.7400)

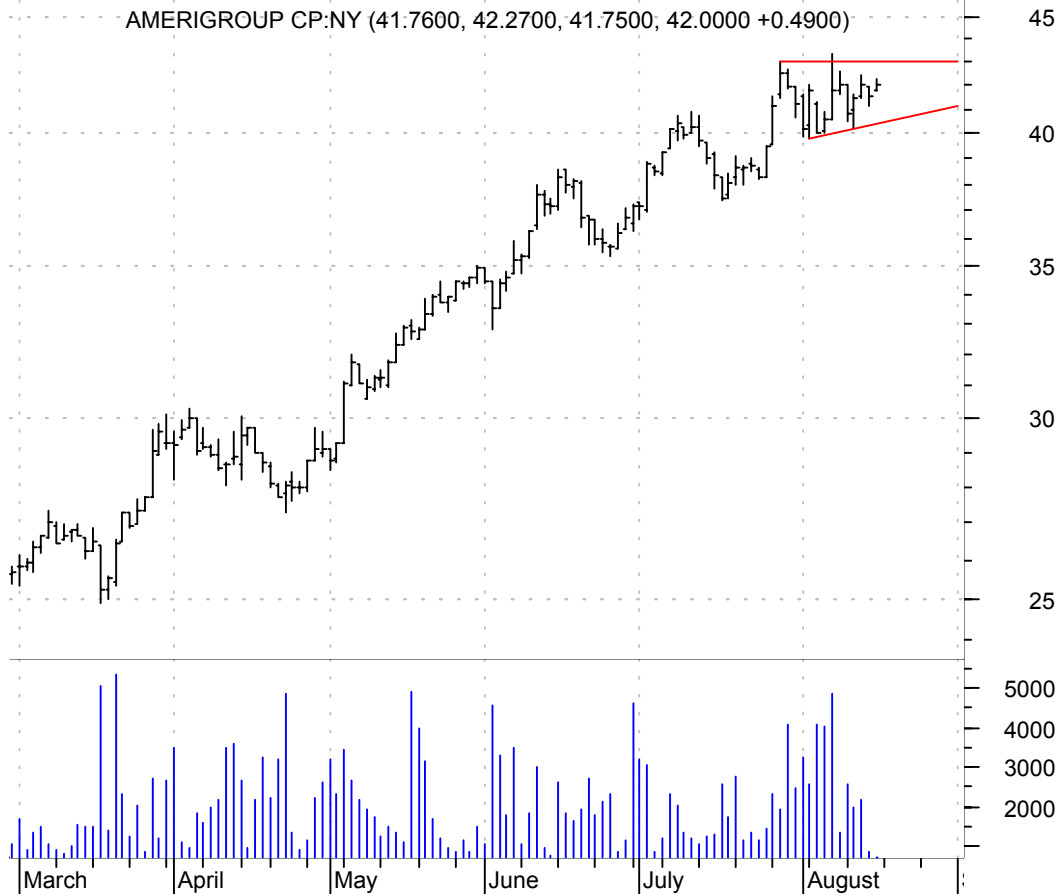


AET rising wedge preceded by 'pole-like' move / sell on downside brkout on increased volume

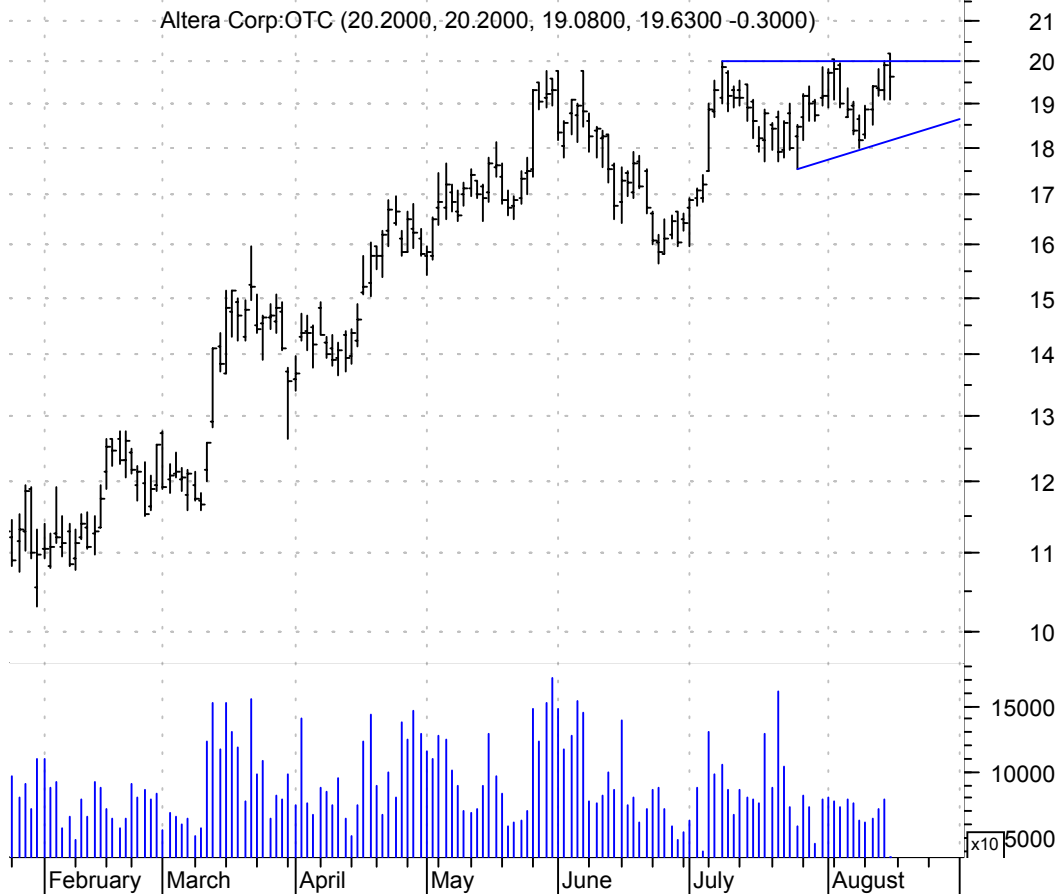
Aetna Inc:NYSE (56.4000, 57.1800, 56.0800, 57.0000 +0.0400)



AGP sloppy asc. tri. / buy on upside brkout on increased volume

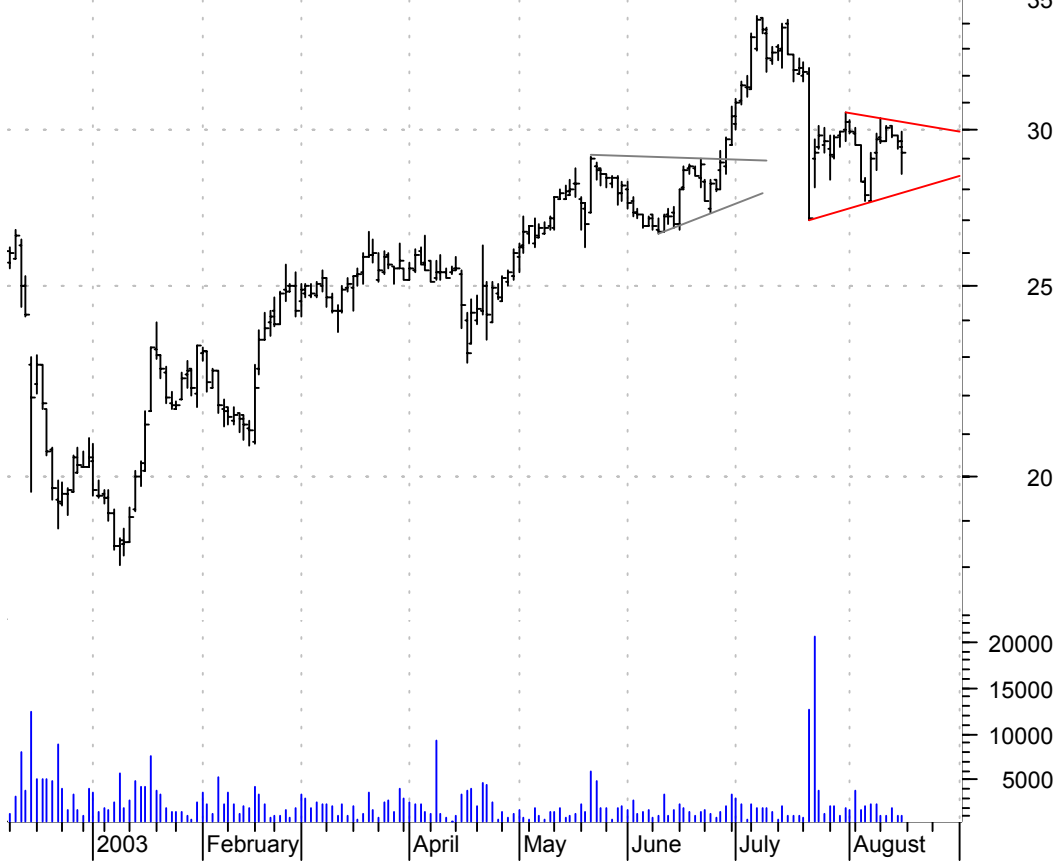


ALTR asc. tri. / buy on upside brkout on larger than normal volume



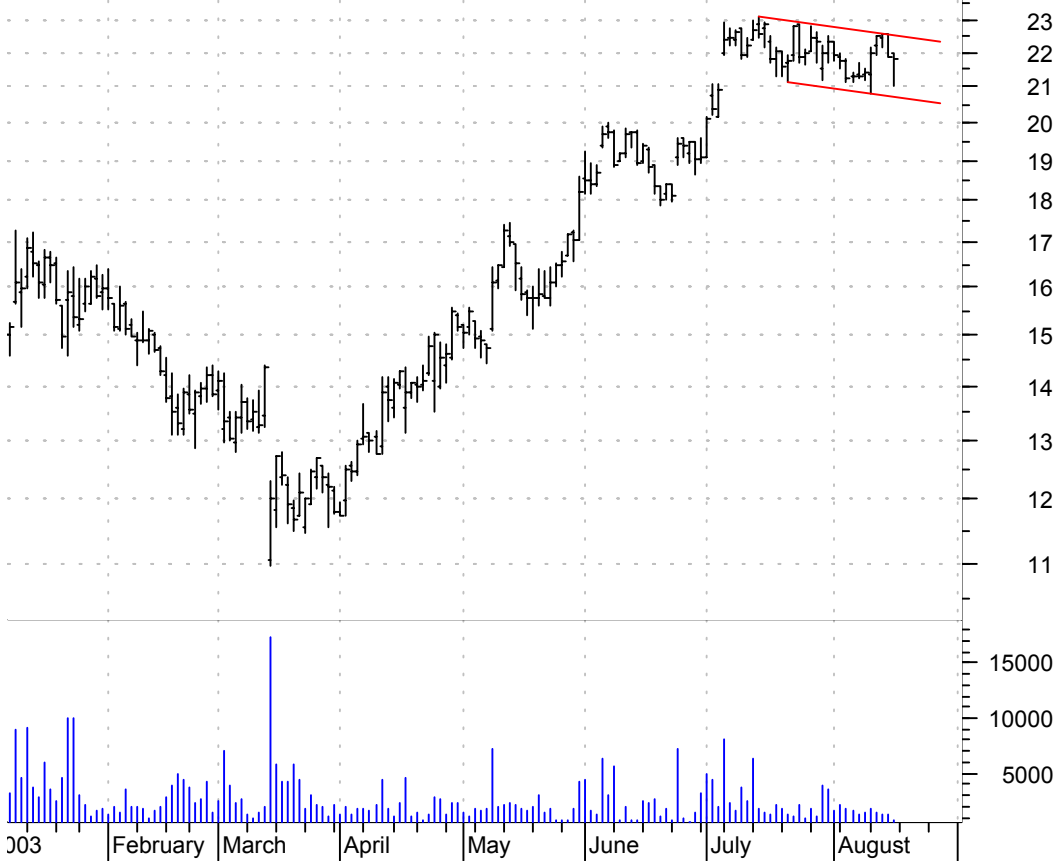
AMSG symm. tri. preceded by 'pole-like' move / sell on downside brkout on increased volume

Amsurg Inc Cl A: (29.4500, 29.9900, 28.5000, 29.2000 -0.4100)



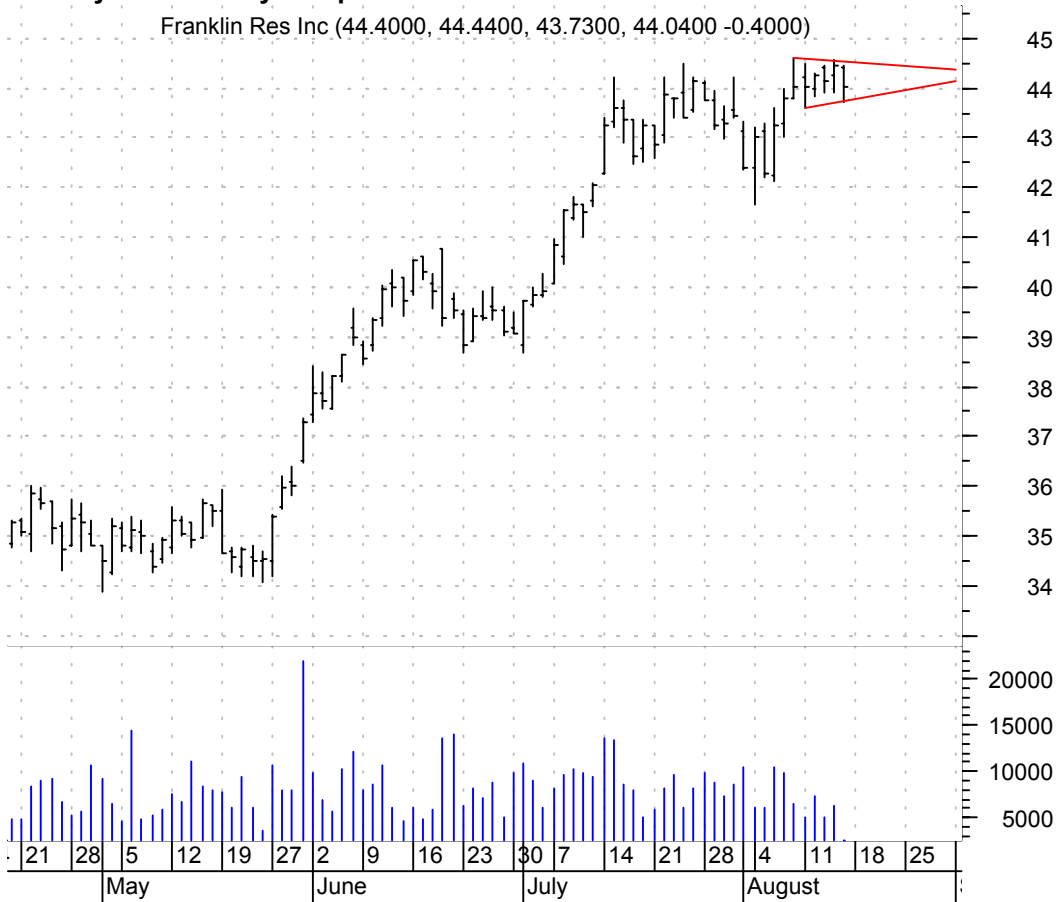
BEBE bullish flagging / buy on upside brkout on increased volume

Bebe Stores Inc: (22.0100, 22.0100, 21.0500, 21.8300 -0.0500)



BEN symm. tri. / buy on upside brkout on increased volume

Franklin Res Inc (44.4000, 44.4400, 43.7300, 44.0400 -0.4000)



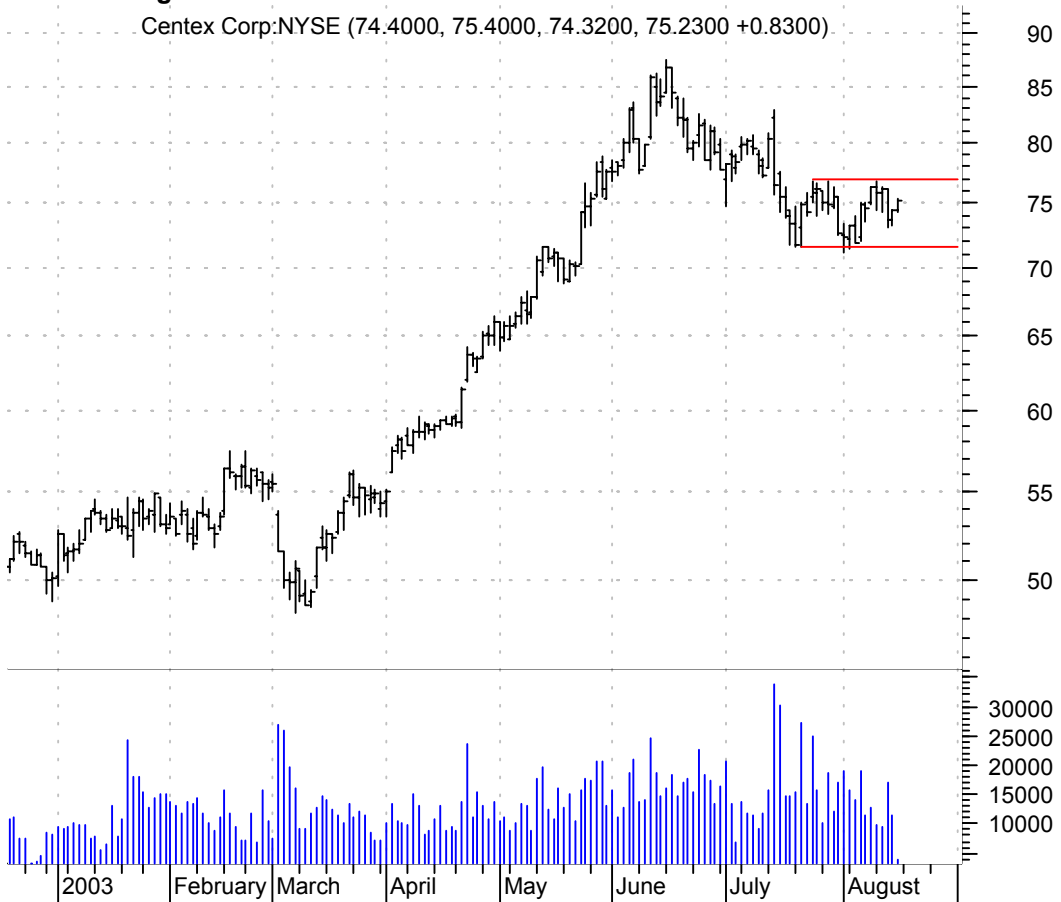
CBL rising wedge / sell on downside brkout on increased volume

CBL & Associates (48.6000, 48.7500, 48.2900, 48.3000 -0.1500)



CTX rectangle / sell on downside brkout on increased volume

Centex Corp:NYSE (74.4000, 75.4000, 74.3200, 75.2300 +0.8300)

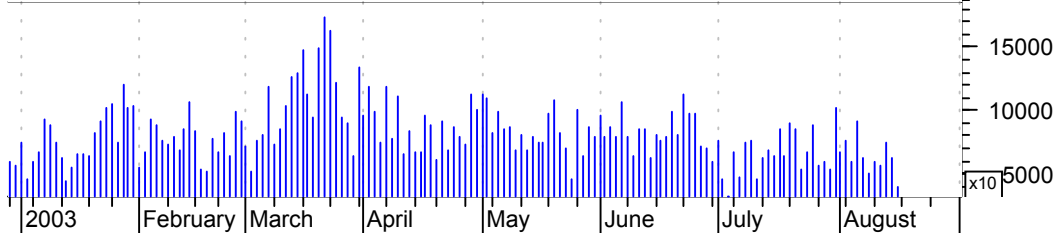
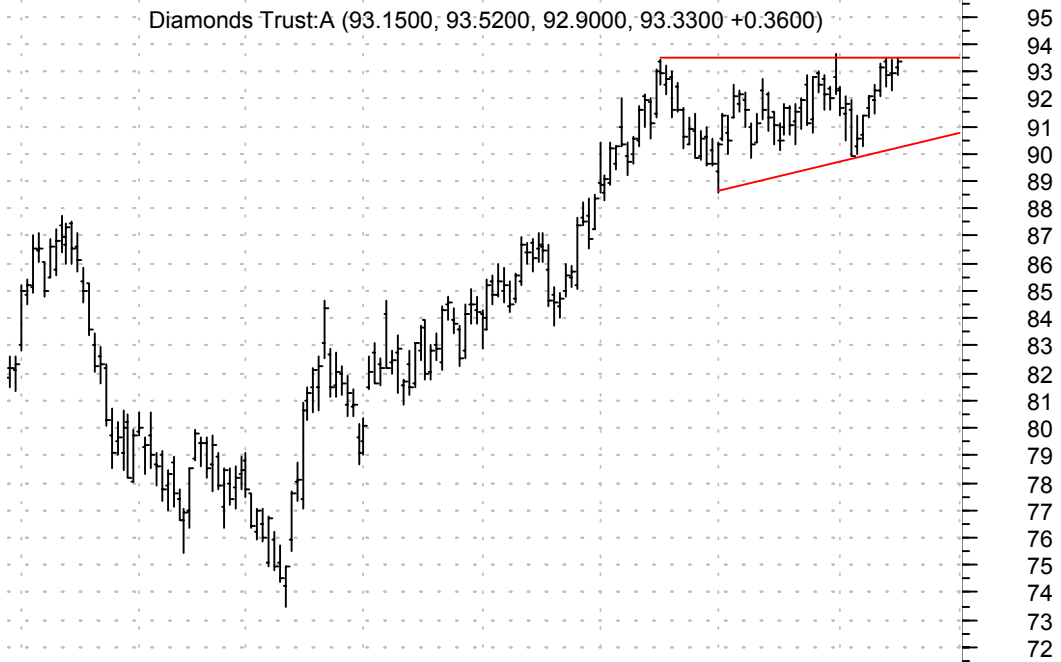


DHI falling wedge / buy on upside brkout on increased volume

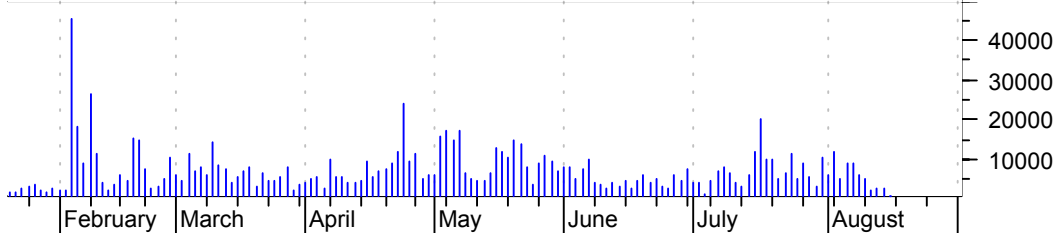
Horton DR Inc:NY (28.3000, 28.7900, 28.1500, 28.7900 +0.5400)



DIA asc. tri. / buy on upside breakout on increased volume

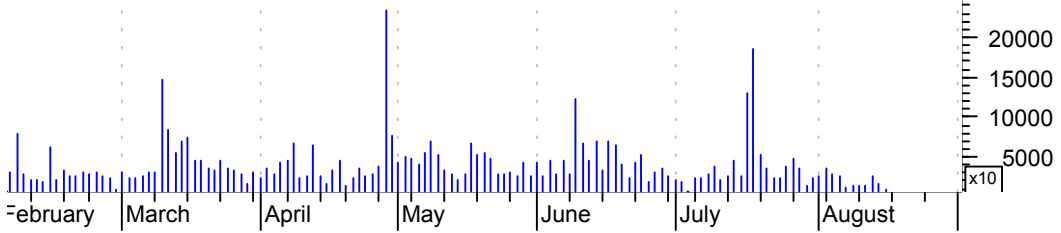


ERES symm. tri. / buy on upside breakout on increased volume



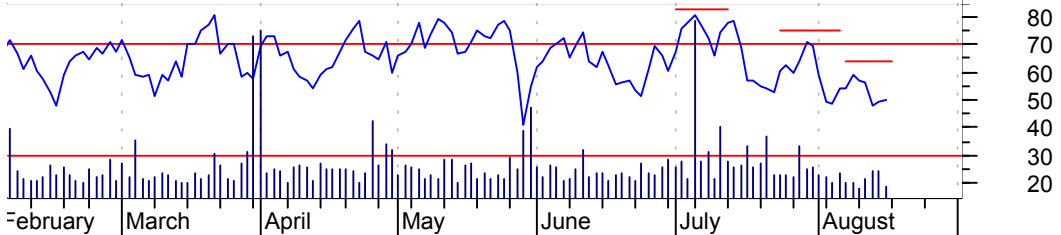
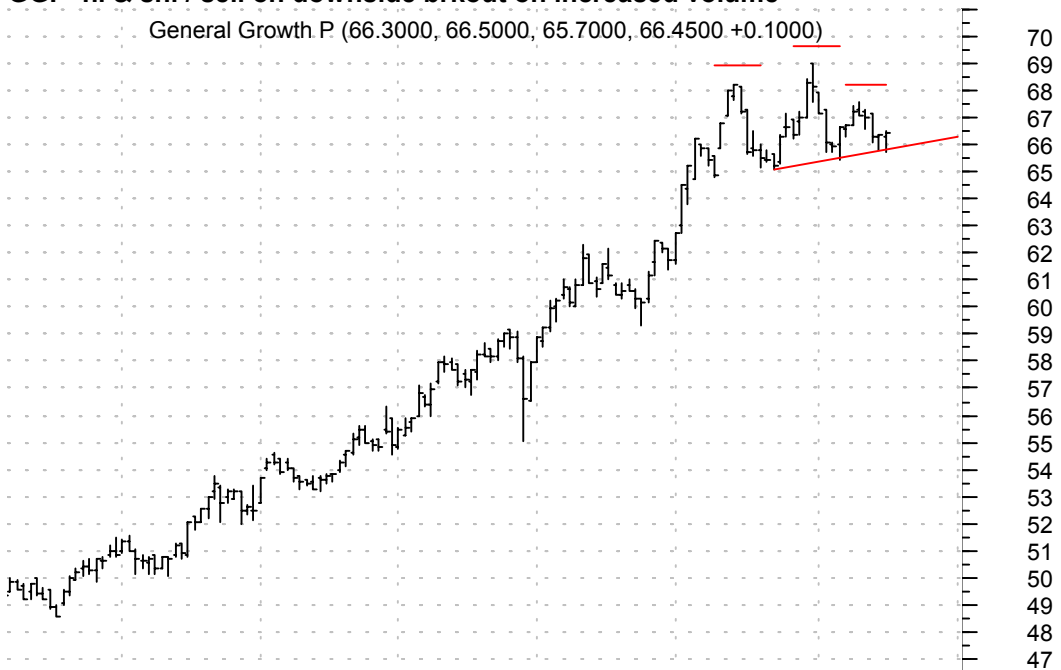
ERICY symm. tri. / buy on upside brkout on increased volume

LM Ericsson Tele (14.3400, 14.4000, 14.1200, 14.2900 -0.0600)



GGP h. & sh. / sell on downside brkout on increased volume

General Growth P (66.3000, 66.5000, 65.7000, 66.4500 +0.1000)



HAS asc. tri. / buy on upside brkout on increased volume

Hasbro:NYSE (19.0500, 19.0500, 18.5200, 18.7000 -0.3300)



IUSA symm. tri. / buy on upside brkout on increased volume

Infousa Inc Cl A (9.1100, 9.2500, 8.8800, 8.9900 -0.2600)



JBHT rectangle / buy on upside brkout on increased volume

Hunt (J.B.) Tran (46.0800, 46.5000, 45.5200, 46.3400 +0.1800)



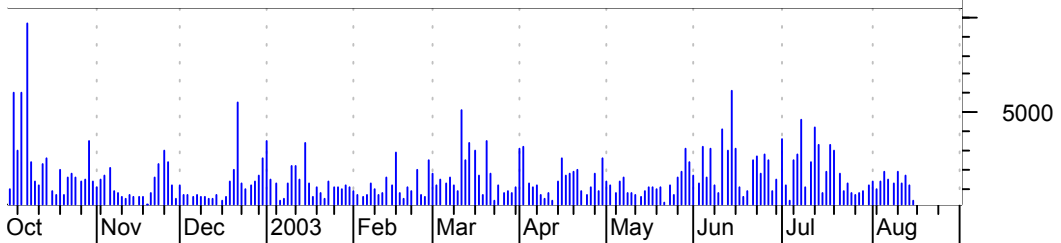
JBL asc. tri. / buy on upside brkout on increased volume

Jabil Circuit In (24.7100, 25.0500, 24.6300, 24.8400 -0.1200)



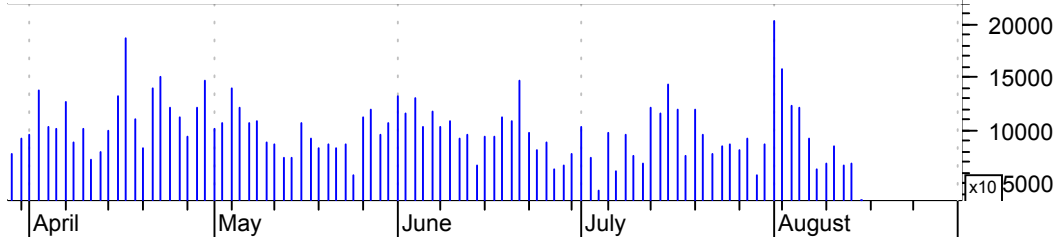
JOYG asc. tri. / buy on upside brkout on increased volume

Joy Global:OTC (15.1800, 15.5200, 15.1500, 15.4000 +0.2300)



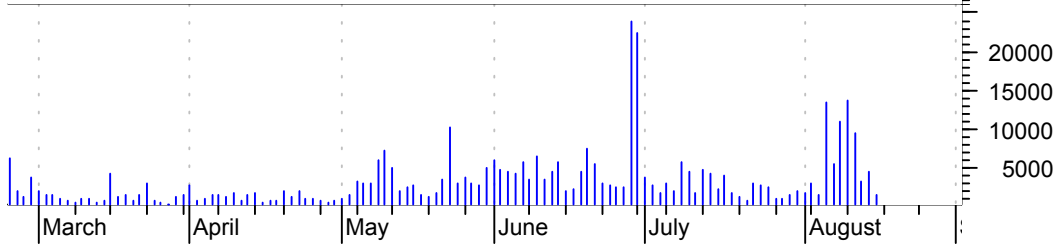
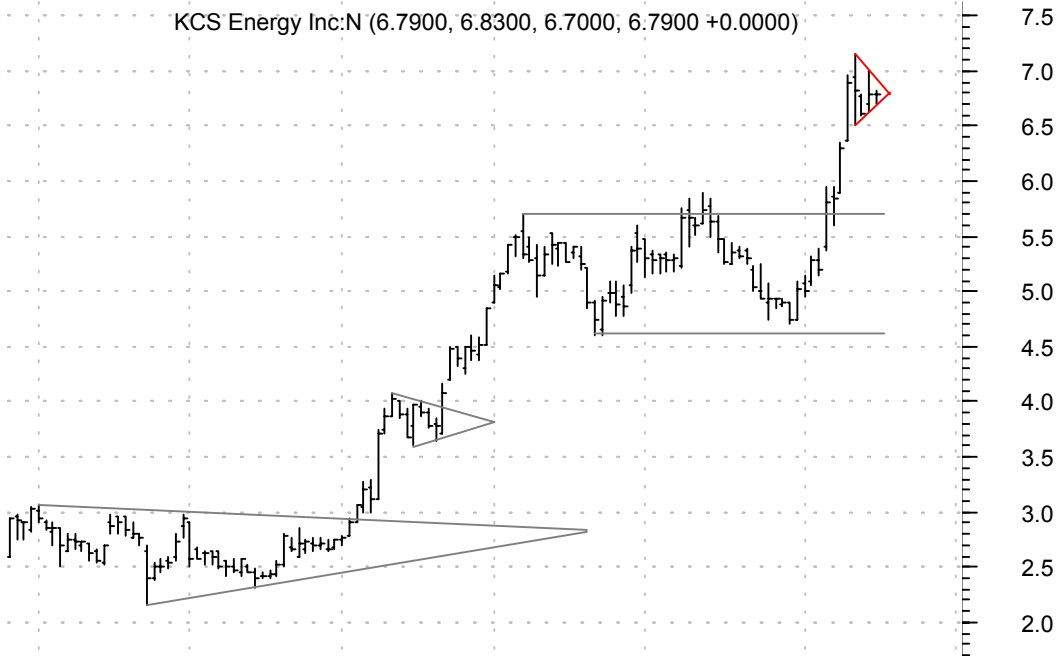
JPM bearish flag / sell on downside brkout on increased volume

JP Morgan Chase (34.0000, 34.0000, 33.4800, 33.6600 -0.2400)



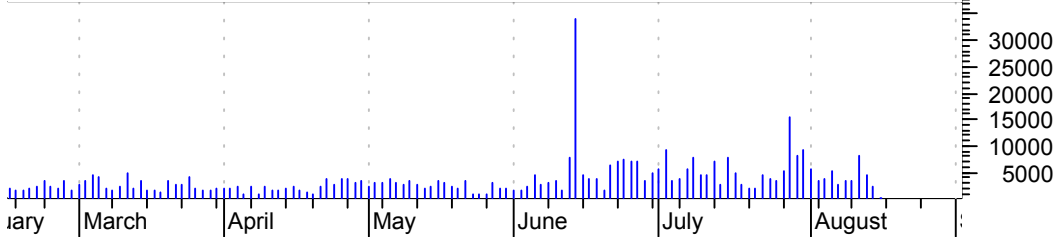
KCS bullish pennant / buy on upside breakout on increased volume

KCS Energy Inc:N (6.7900, 6.8300, 6.7000, 6.7900 +0.0000)



KEA symm. tri. / buy on upside breakout on increased volume

Keane Inc:AMEX (14.4400, 14.4400, 14.4400, 14.4400 +0.2100)



LIOX bull flag / buy on upside brkout on increased volume

LIONBRIDGE TECH (6.5200, 6.6500, 6.3800, 6.5000 +0.0300)



MAG rectangle brkout / buy and use bottom of pattern as failure point

Magnetek Inc:NYS (4.4100, 4.5000, 4.2600, 4.3700 -0.0200)



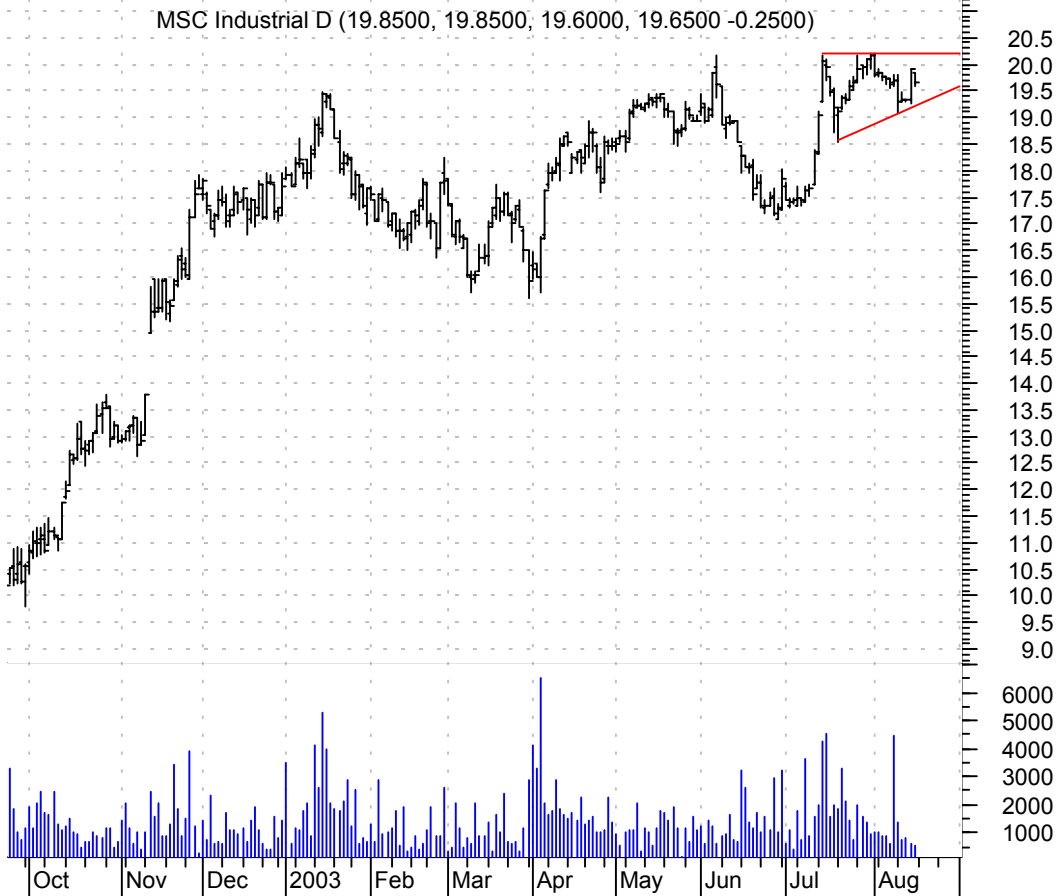
MSCC symm. tri. / buy on upside brkout on increased volume

Microsemi Cp:OTC (16.1200, 16.4200, 15.8200, 15.9800 -0.1300)



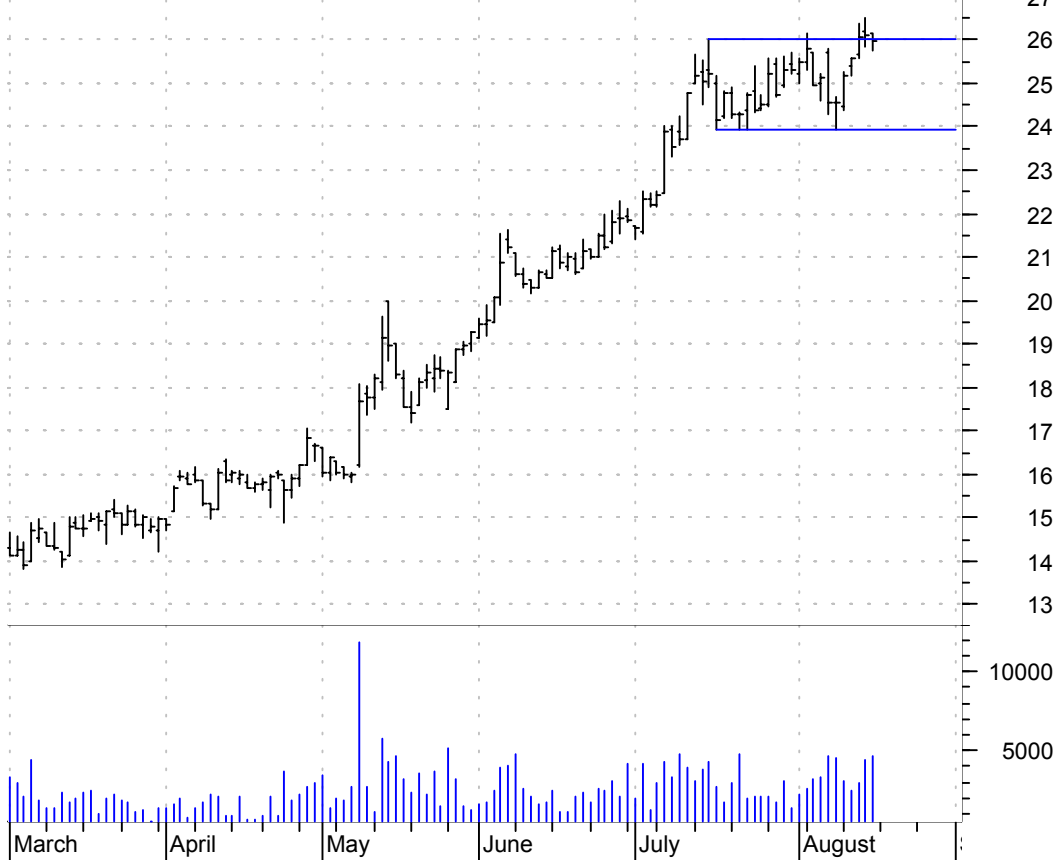
MSM asc. tri. preceded by 'pole-like' move / buy on upside brkout on increased volume

MSC Industrial D (19.8500, 19.8500, 19.6000, 19.6500 -0.2500)



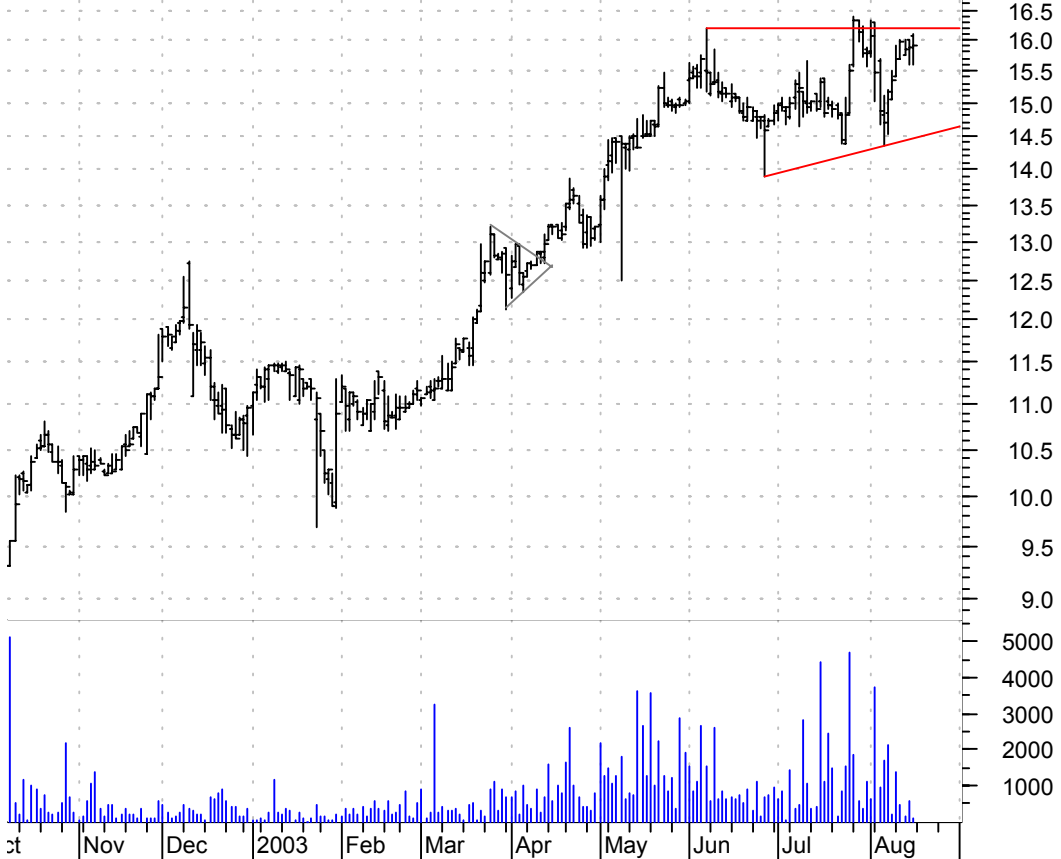
MW rectangle / buy on upside breakout on larger than normal volume

Mens Warehouse I (26.1500, 26.1500, 25.7600, 25.9800 -0.1200)



MXRE sloppy asc. tri. / buy on upside breakout on increased volume

MAX RE CAPITAL L (16.0500, 16.1000, 15.6000, 15.9100 +0.0200)



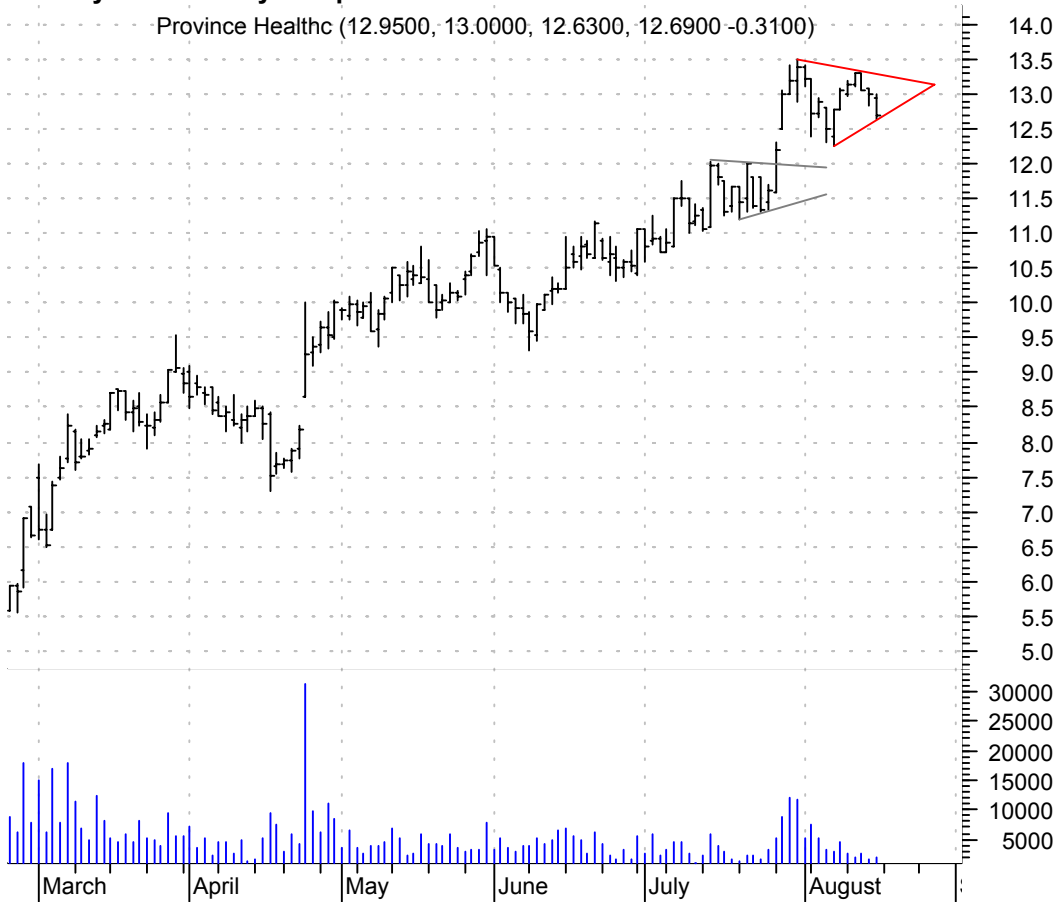
PENN symm. tri. / buy on upside brkout thru dotted red line on increased volume

Penn Natl Gaming (21.6200, 21.7500, 21.4600, 21.6500 -0.1000)



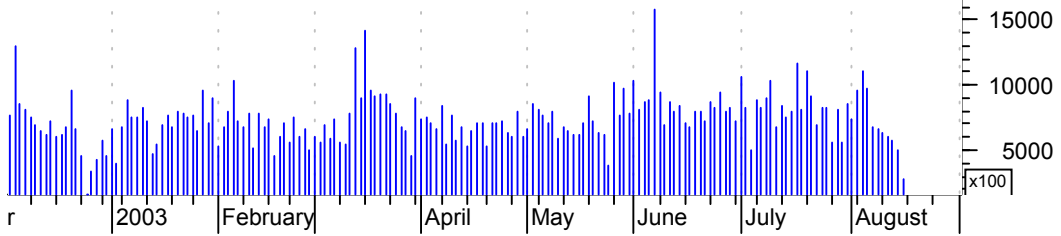
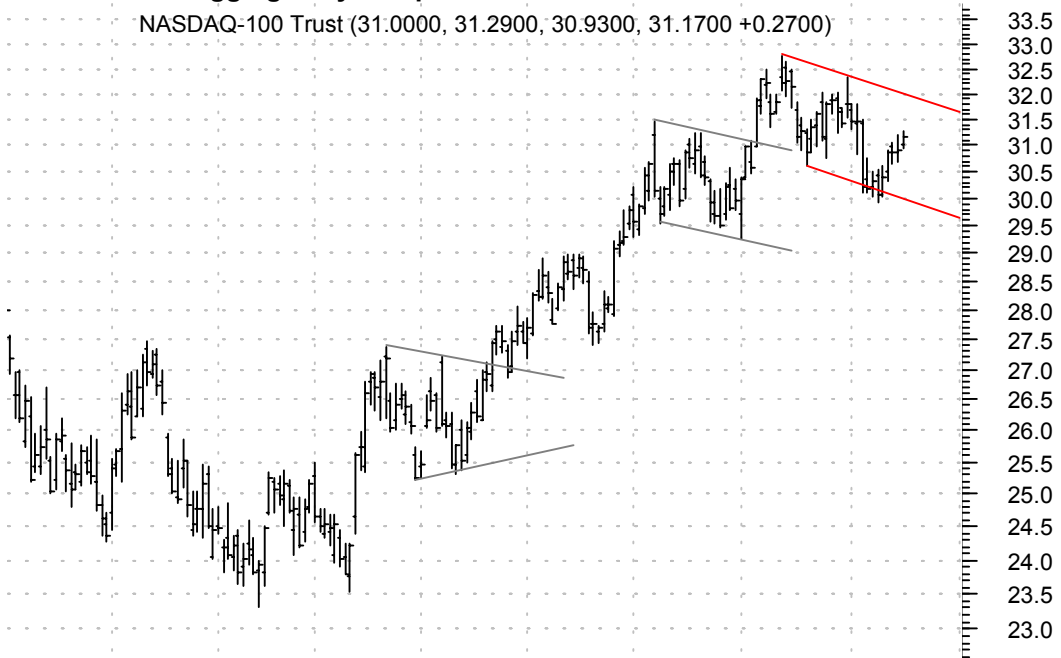
PRV symm. tri. / buy on upside brkout on increased volume

Province Healthc (12.9500, 13.0000, 12.6300, 12.6900 -0.3100)



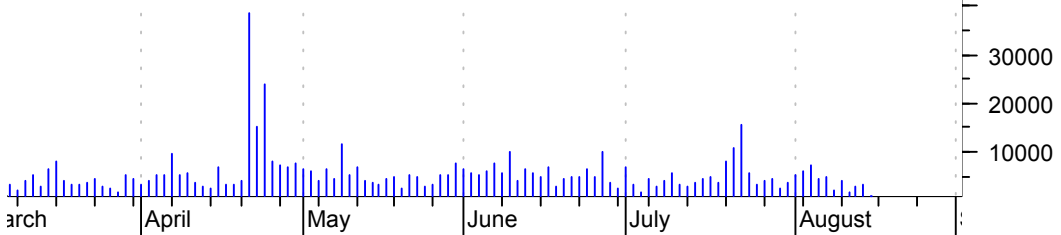
QQQ bullish flagging / buy on upside breakout on increased volume

NASDAQ-100 Trust (31.0000, 31.2900, 30.9300, 31.1700 +0.2700)



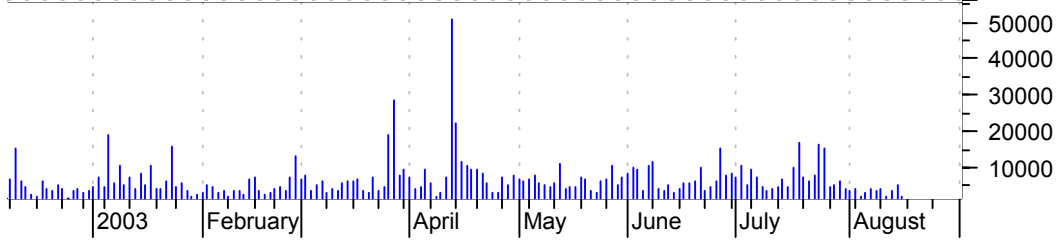
RE symm. tri. / sell on downside breakout on increased volume

Everest Re Group (73.5100, 73.6100, 73.0300, 73.3800 -0.0300)



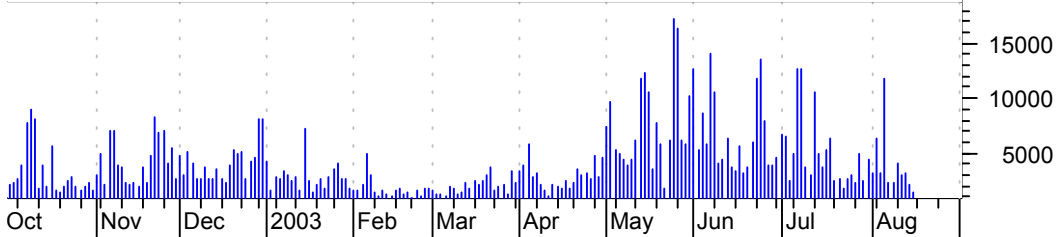
RSAS symm. tri. / buy on upside brkout on increased volume

RSA Security Dyn (11.9800, 12.0000, 11.6600, 11.6700 -0.3100)



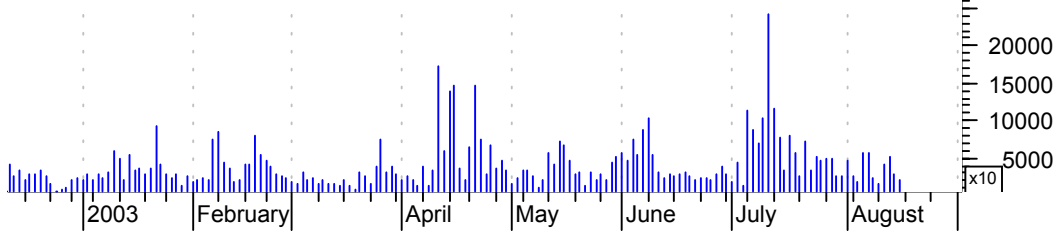
SFE symm. tri. / buy on upside brkout on increased volume

Safeguard Scient (2.8100, 2.8300, 2.7100, 2.7500 -0.0300)



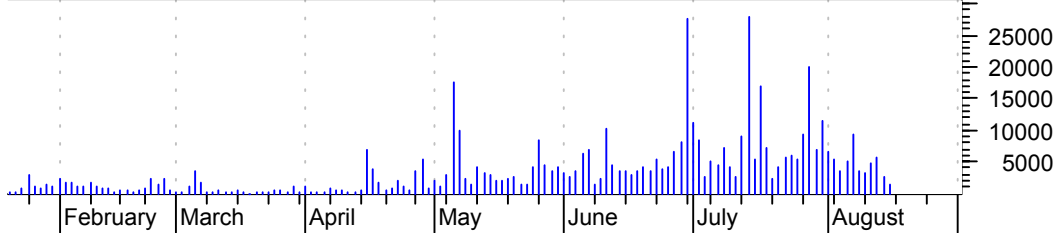
SONS bullish flagging / buy on upside breakout on increased volume

SONUS NETWORKS I (6.6100, 6.7800, 6.4000, 6.5100 -0.0700)



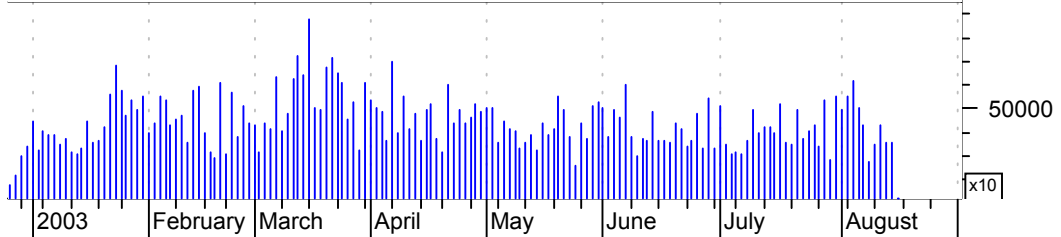
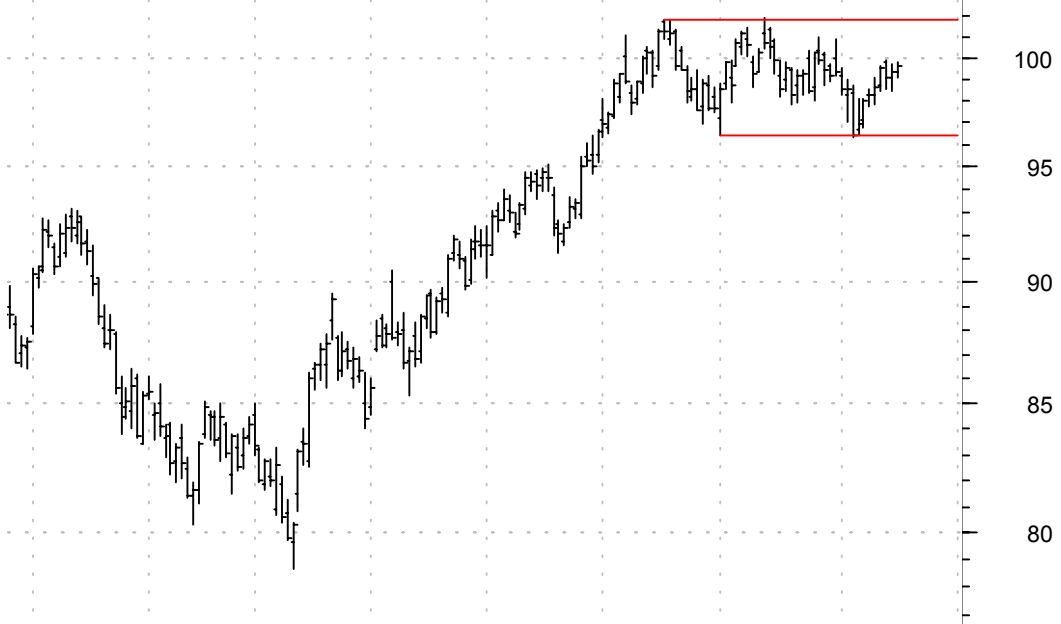
SPRT symm. tri. / buy on upside breakout on increased volume

SupportSoft Inc: (7.7600, 7.9800, 7.5700, 7.8000 +0.0000)



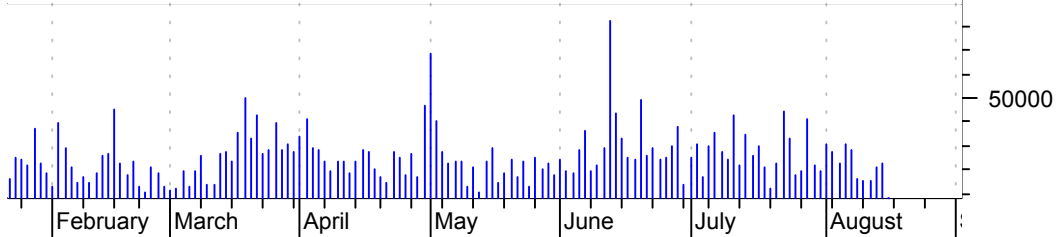
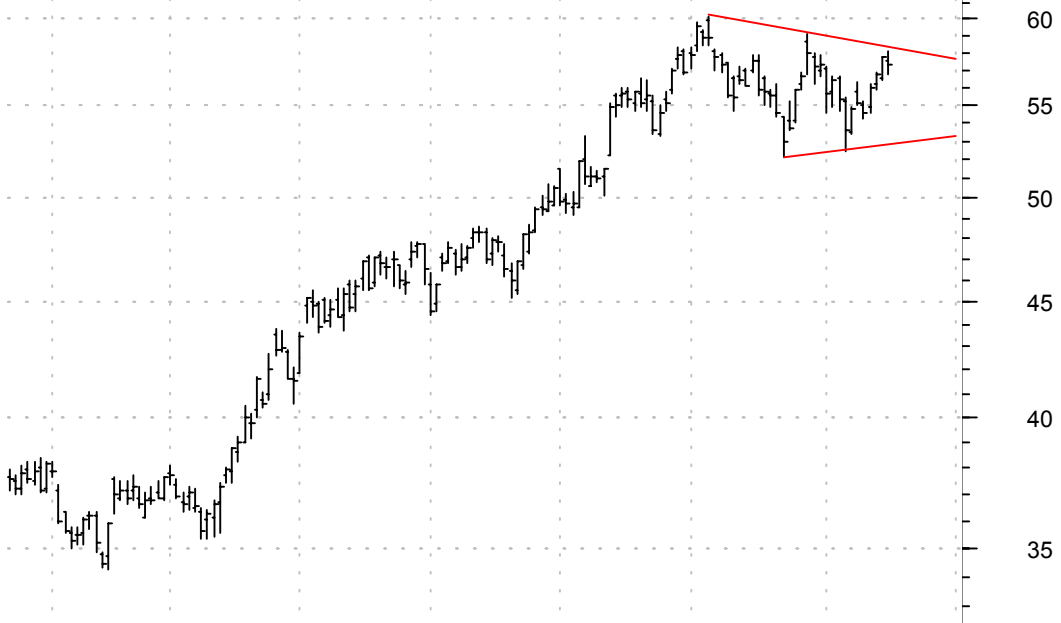
SPY rectangle / buy on upside brkout on increased volume

S&P 500 Deposito (99.3600, 99.7900, 99.1200, 99.6200 +0.3100)



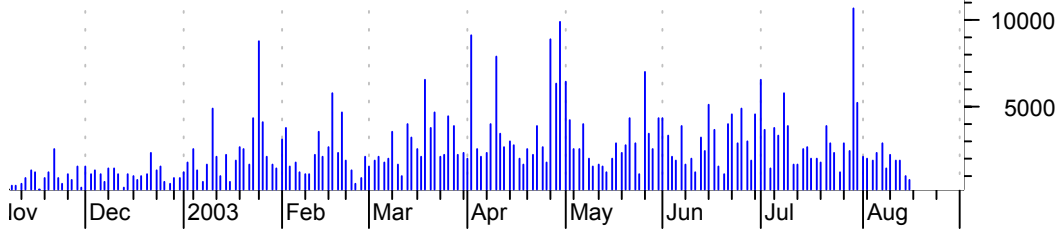
TEVA symm. tri. / buy on upside brkout on increased volume

Teva Pharm Ind I (57.5000, 58.1400, 56.7500, 57.2700 -0.4600)



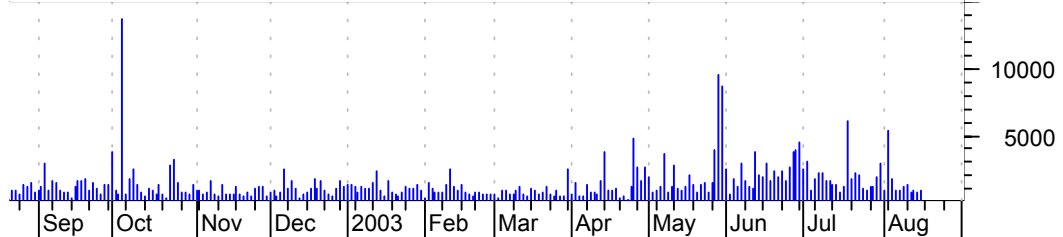
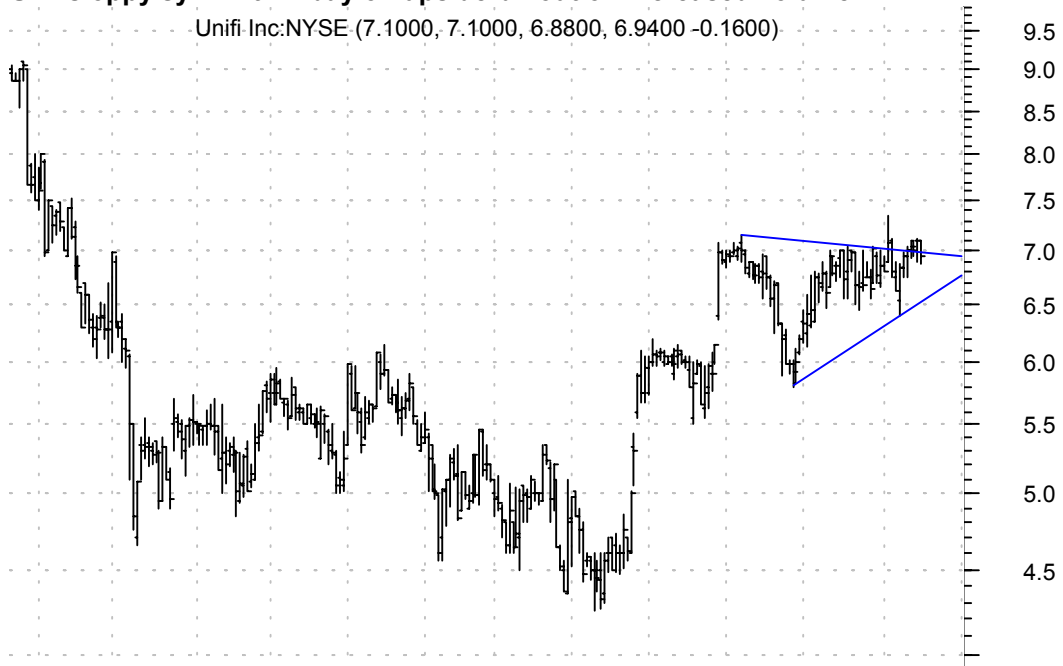
TRMB sloppy asc. tri. / buy on upside brkout on increased volume

Trimble Navigati (26.1500, 26.2300, 25.6000, 25.7500 -0.3000)



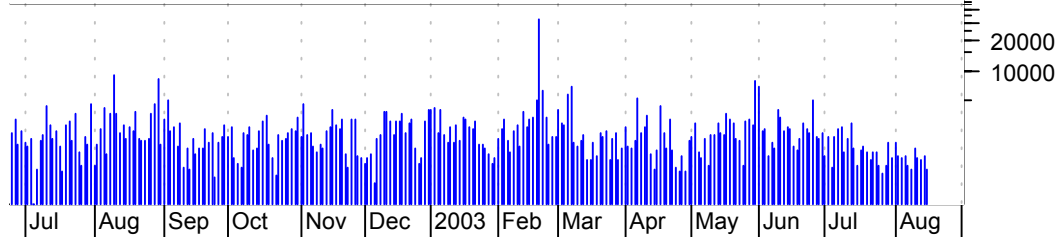
UFI sloppy symm. tri. / buy on upside brkout on increased volume

Unifi Inc:NYSE (7.1000, 7.1000, 6.8800, 6.9400 -0.1600)



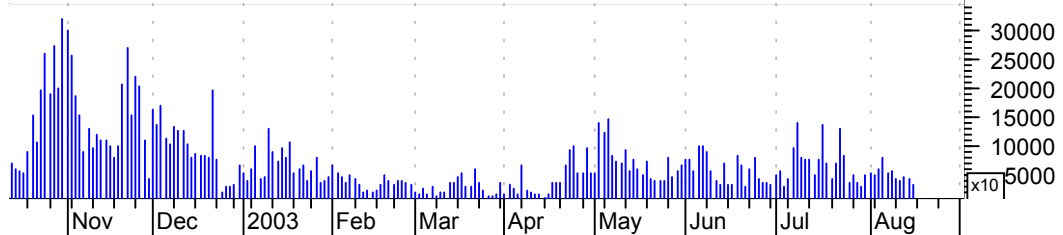
VPI bullish flagging / buy on upside breakout on increased volume

Vintage Petroleu (11.5000, 11.7300, 11.4600, 11.6700 +0.1700)



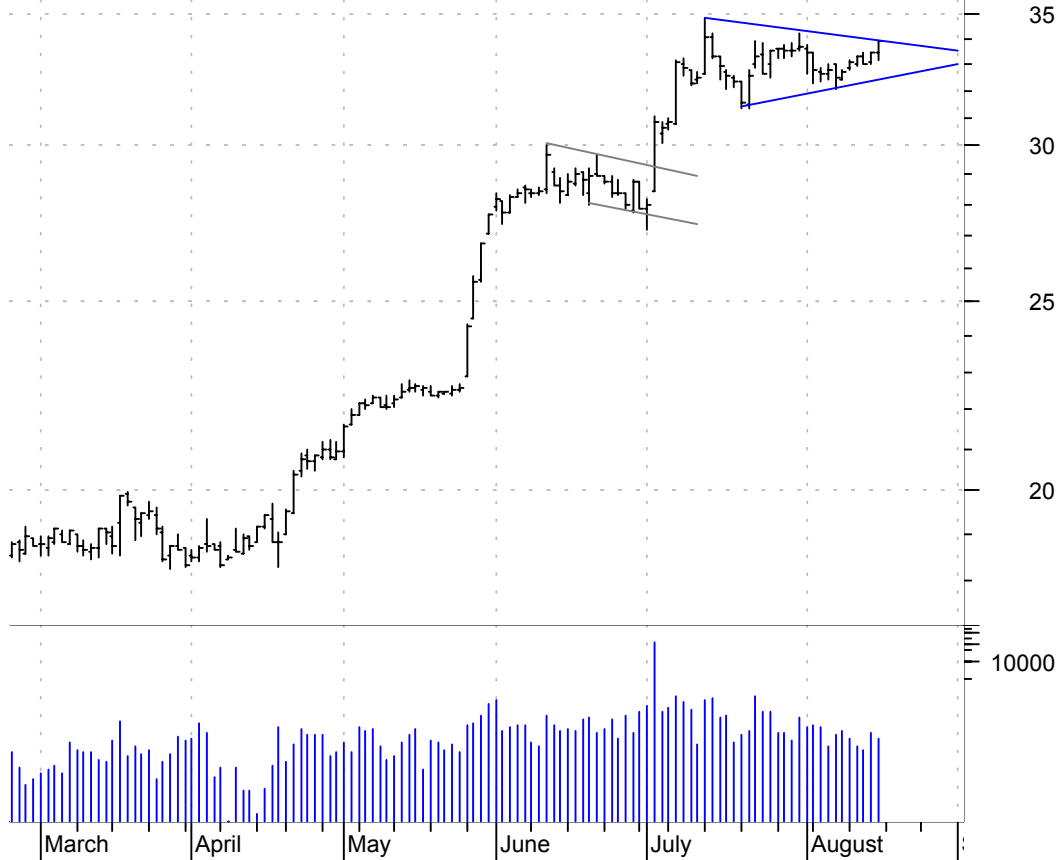
VTSS falling wedge / buy on upside breakout on increased volume

Vitesse Semicond (5.7600, 5.9000, 5.6100, 5.8400 +0.0600)



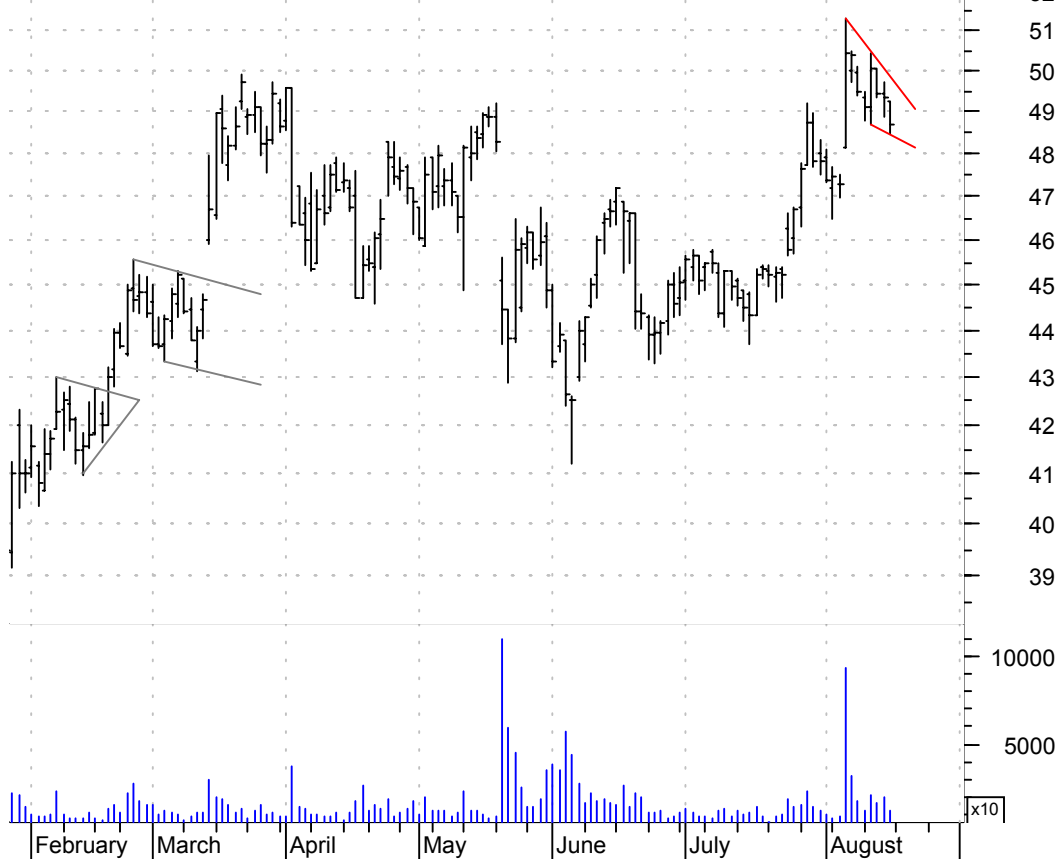
WES symm. tri. / buy on upside brkout on increased volume

Westcorp:NYSE (33.5000, 33.9500, 33.2000, 33.9500 +0.4700)



ZMH falling wedge preceded by 'pole-like' move / buy on upside brkout on increased volume

ZIMMER HOLDINGS (49.2500, 49.2500, 48.4500, 48.7000 -0.6500)



chartpatterns.com
Chart Pattern Analysis for Timing the Markets

KMatras@aol.com