

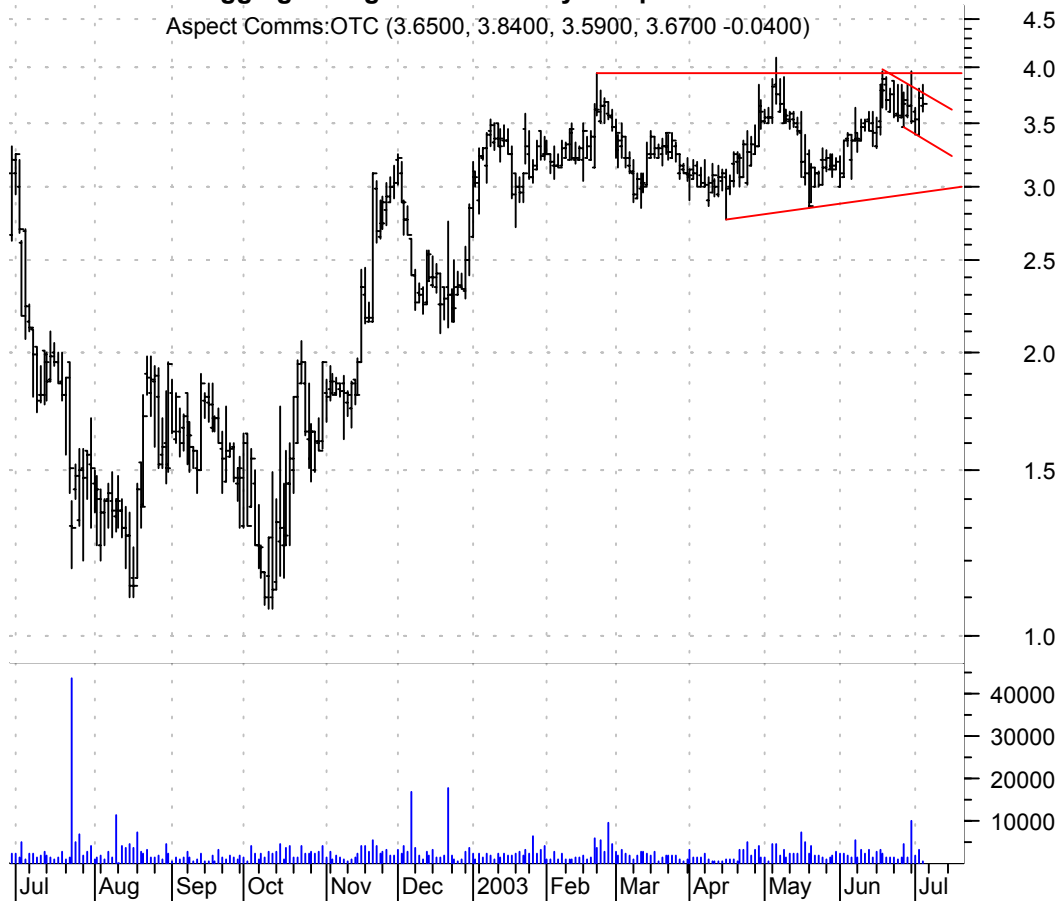
ASKJ asc. tri. / buy on upside brkout on increased volume

Ask Jeeves Inc:O (13.8600, 14.3900, 13.8600, 14.1800 +0.0300)



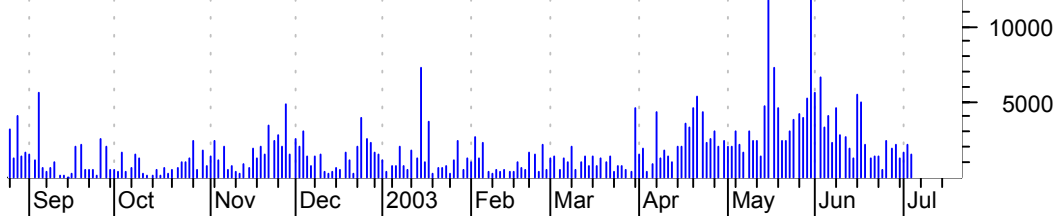
ASPT bullish flagging in larger asc. tri. / buy on upside brkout of asc. tri. on increased volume

Aspect Comms:OTC (3.6500, 3.8400, 3.5900, 3.6700 -0.0400)



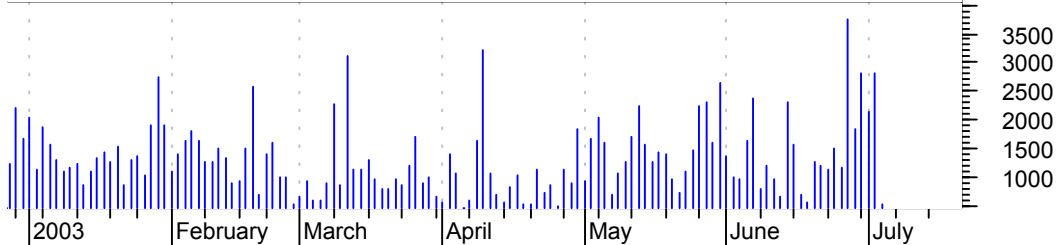
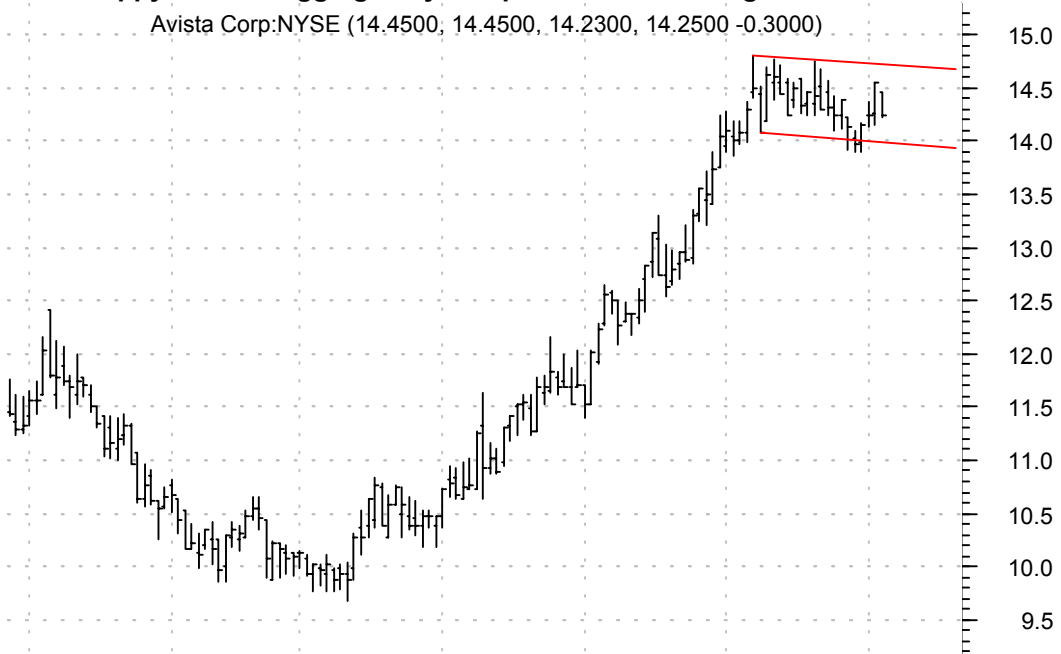
AUDC falling wedge / buy on upside brkout thru dotted red line on increased volume

Audiocodes Ltd:O (4.8000, 4.9900, 4.7000, 4.9400 +0.1400)



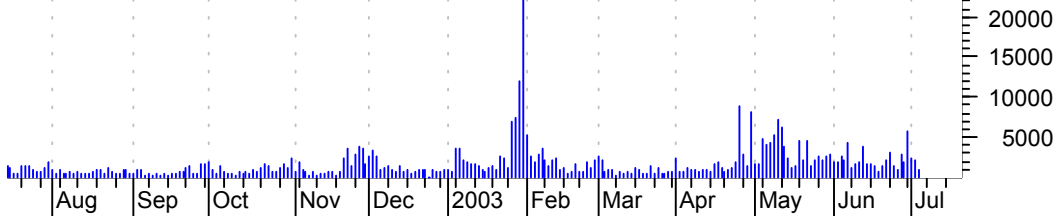
AVA sloppy bullish flagging / buy on upside brkout on larger than normal volume

Avista Corp:NYSE (14.4500, 14.4500, 14.2300, 14.2500 -0.3000)



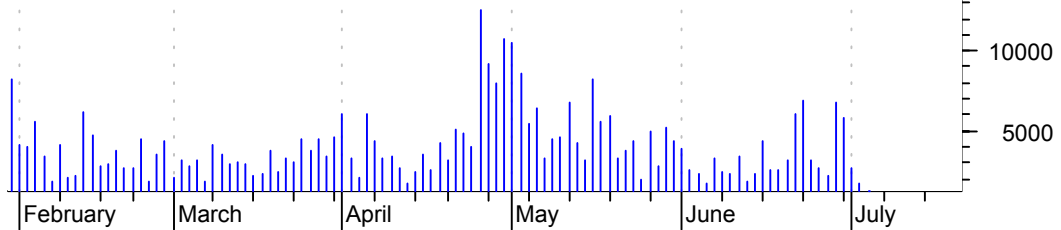
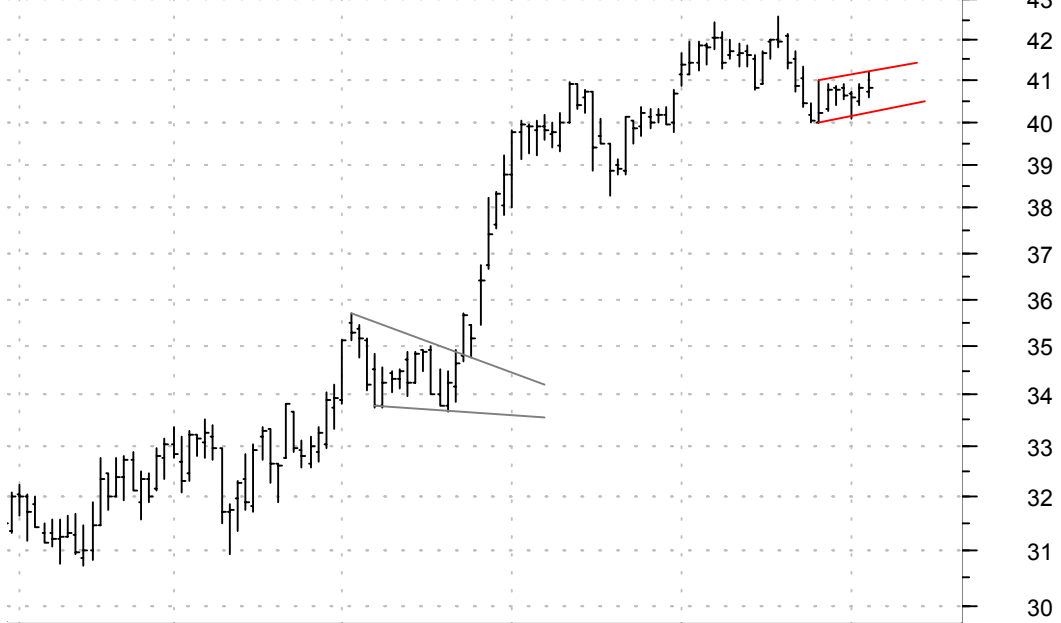
BDY bullish flagging / buy on upside brkout on increased volume

Bradley Pharmace (16.8000, 17.1000, 16.7500, 16.9800 +0.1800)



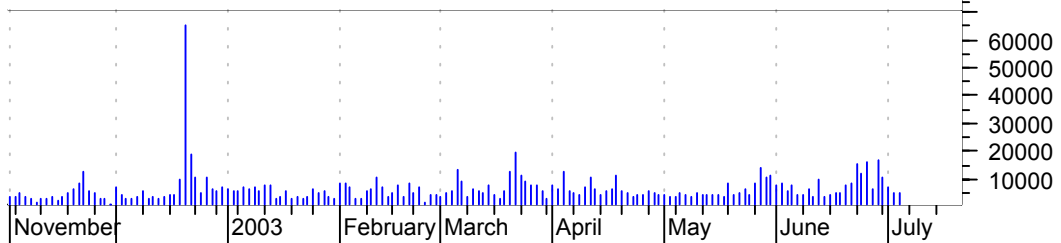
BEC bearish flagging / sell on downside brkout on increased volume

Beckman Coulter (40.7000, 41.2100, 40.6000, 40.8100 +0.000)



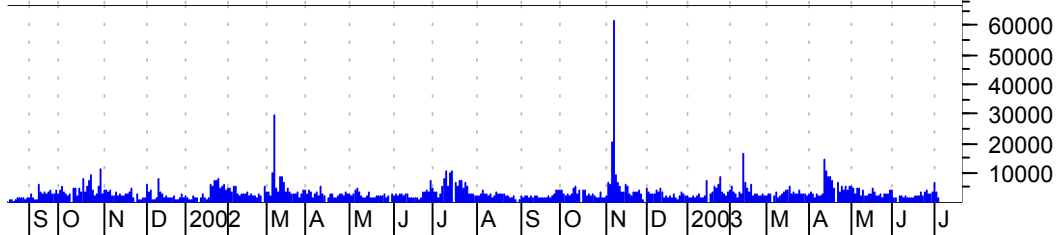
BKS bullish flag / buy on upside breakout thru dotted red line on increased volume

Barnes & Noble I (23.1000, 23.6000, 23.0500, 23.4500 +0.2300)



BRO bullish flag / buy on upside breakout on increased volume

Brown & Brown In (33.7400, 34.0000, 33.6500, 33.7500 -0.2400)



BSX symm. tri. / buy on upside breakout on larger than normal volume

Boston Scientific (61.0000, 62.9400, 60.4900, 62.5600 +0.5300)



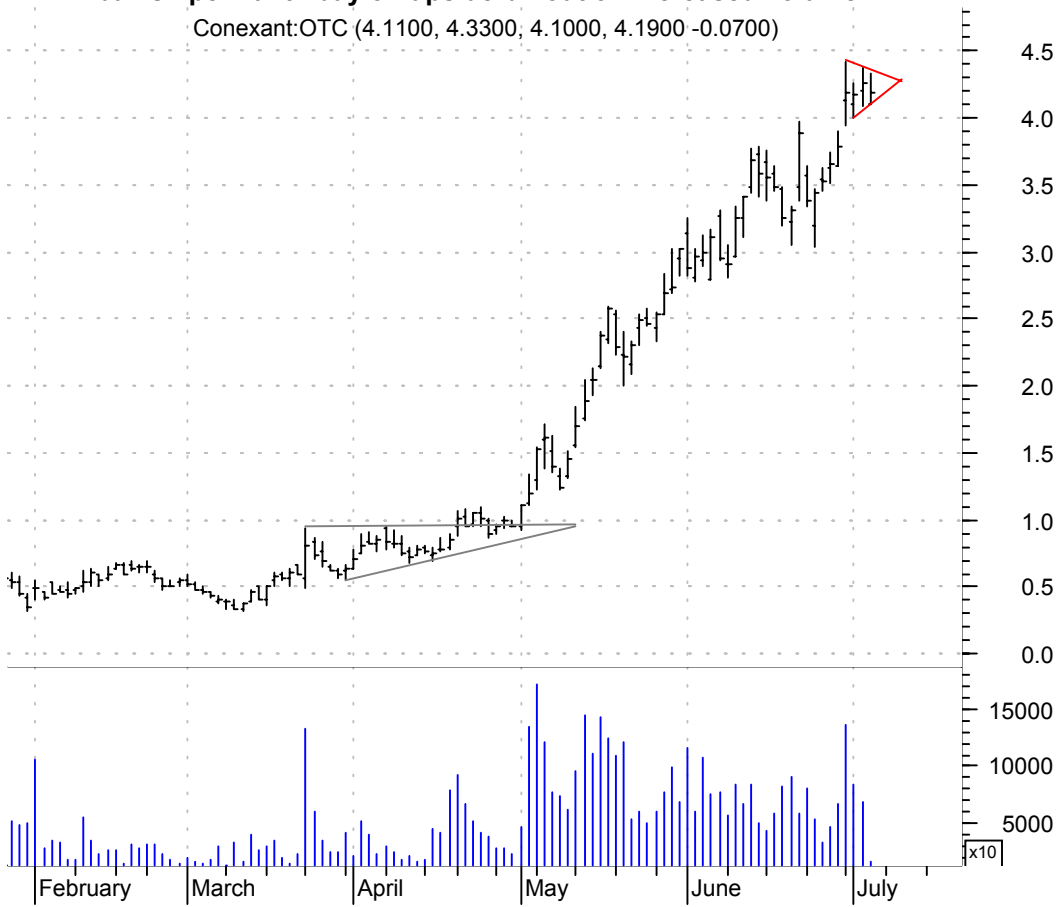
CMVT symm. tri. preceded by 'pole-like' move / sell on downside breakout on increased volume

Converse Technol (15.2400, 15.4800, 15.0300, 15.2100 -0.0900)



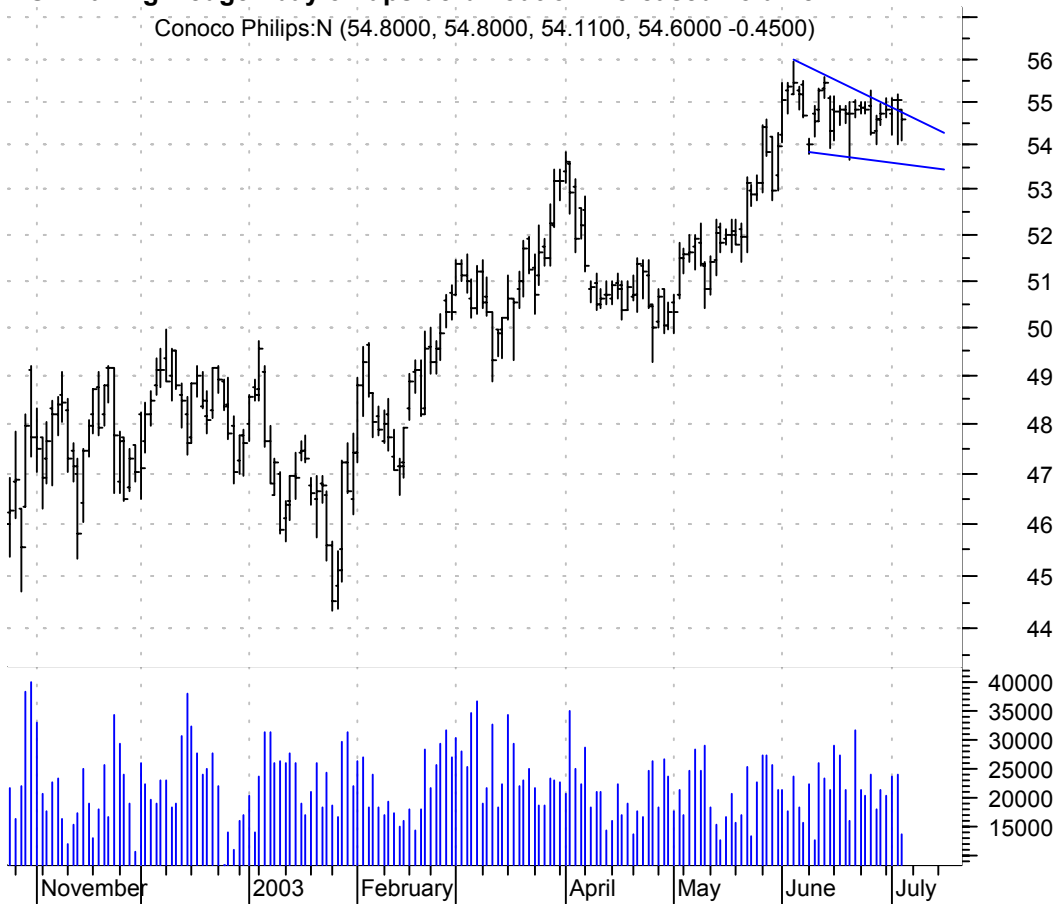
CNXT bullish pennant / buy on upside brkout on increased volume

Conexant:OTC (4.1100, 4.3300, 4.1000, 4.1900 -0.0700)



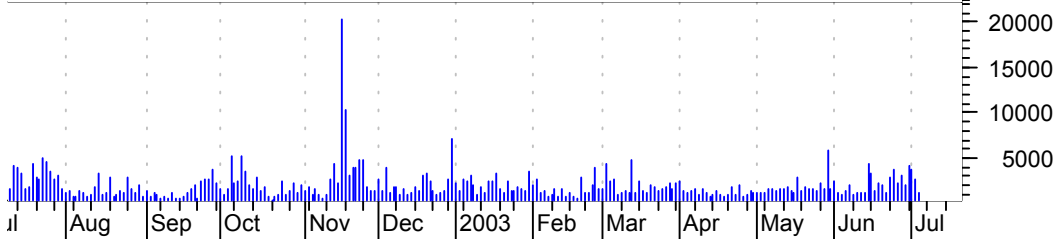
COP falling wedge / buy on upside brkout on increased volume

Conoco Philips:N (54.8000, 54.8000, 54.1100, 54.6000 -0.4500)



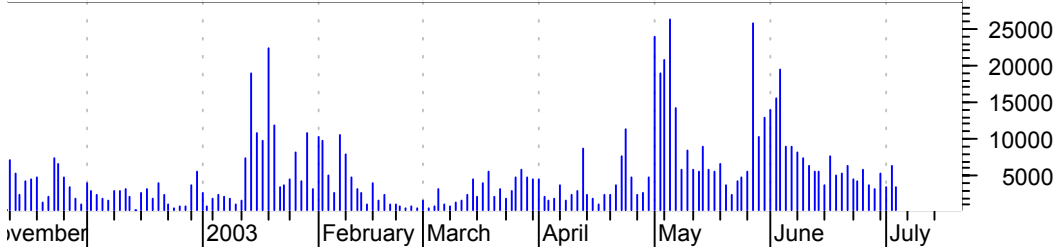
CPG bullish flag / buy on upside brkout on increased volume

Chelsea Property (42.0500, 42.3500, 41.8100, 42.3500 +0.2000)



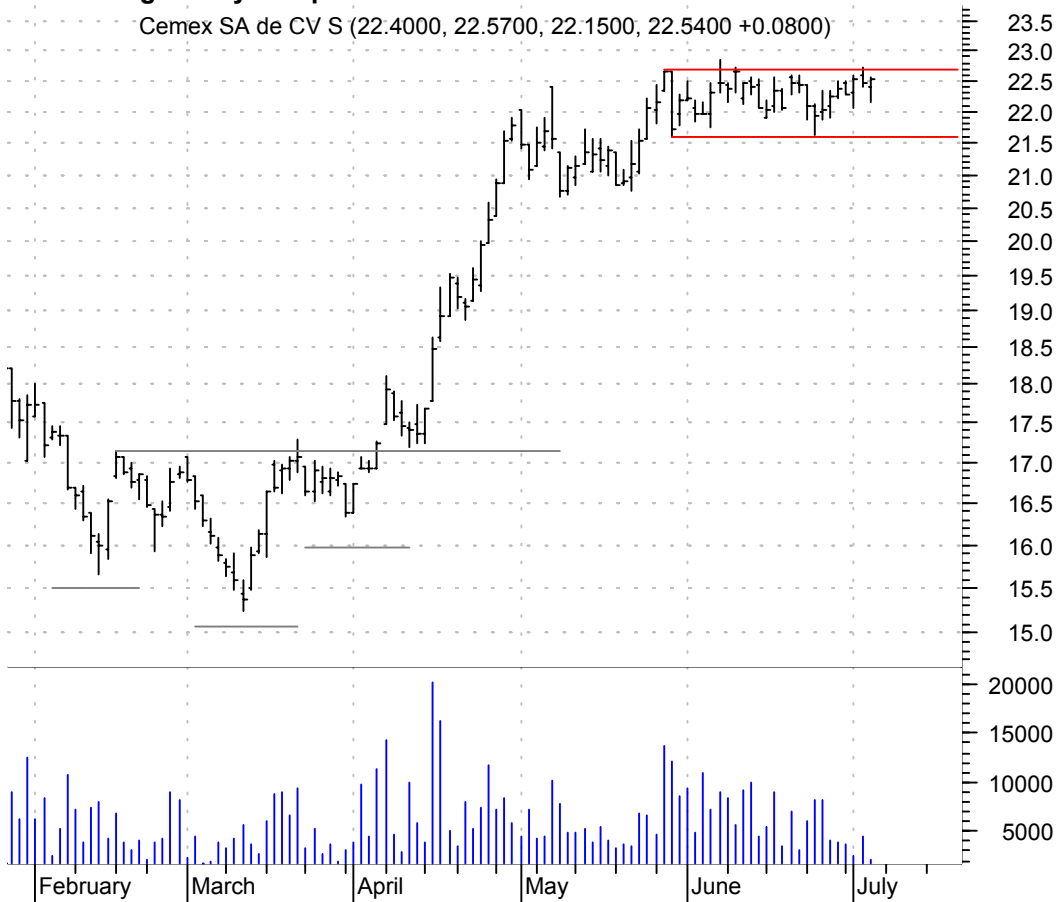
CTLM symm. tri. / buy on upside brkout on increased volume

CENTILLIUM COMMU (10.2900, 10.3800, 9.9000, 10.2200 -0.1400)



CX rectangle / buy on upside brkout on increased volume

Cemex SA de CV S (22.4000, 22.5700, 22.1500, 22.5400 +0.0800)



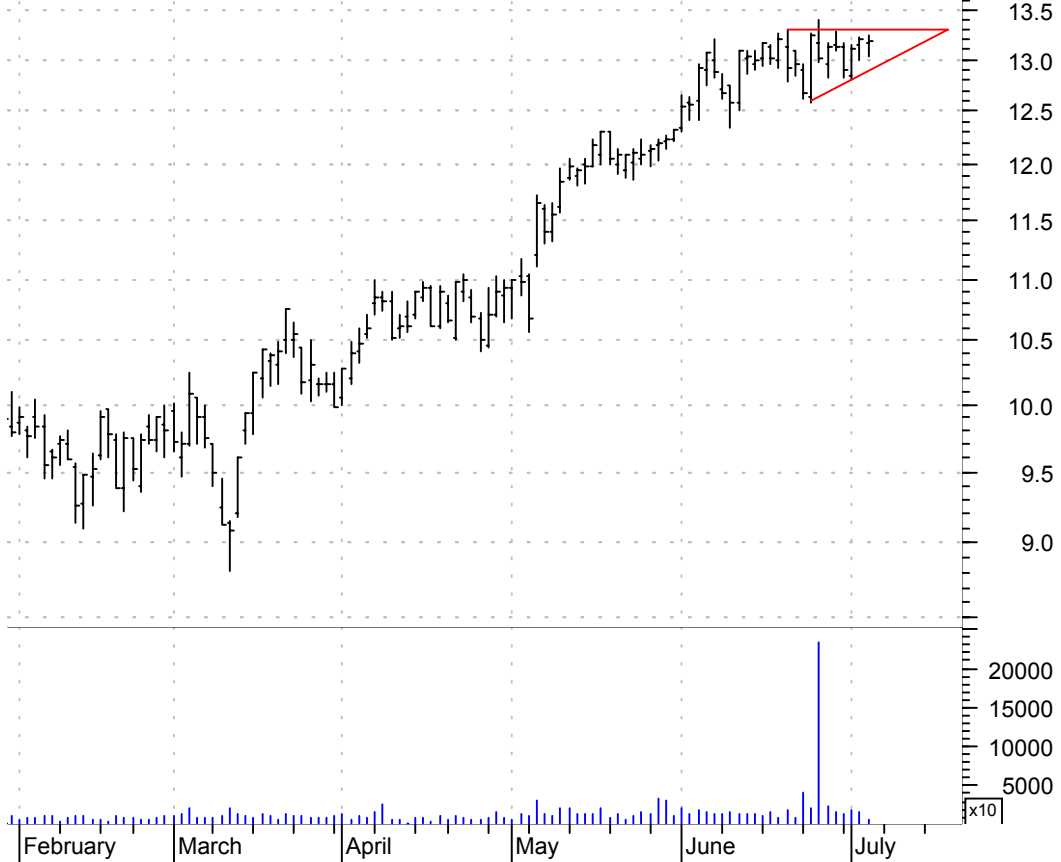
CYBX asc. tri. / buy on upside brkout on increased volume

Cyberonics:OTC (23.7000, 24.2000, 23.5300, 24.0400 +0.1900)



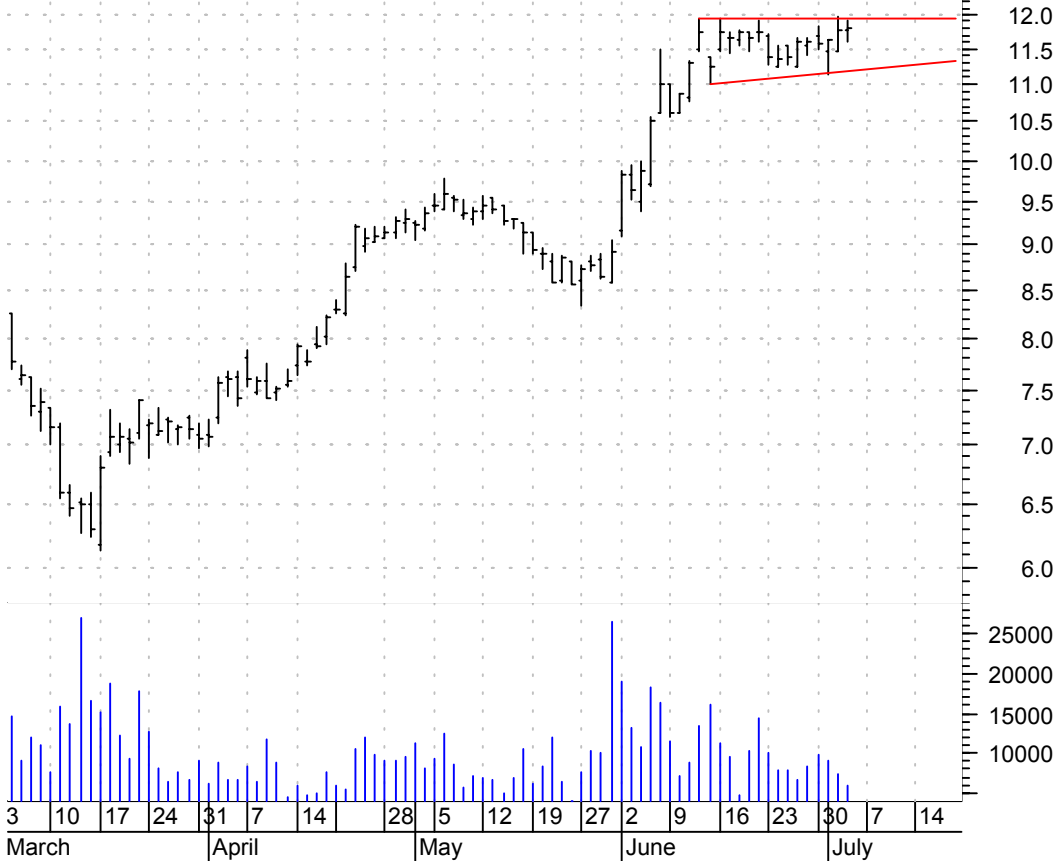
CZN asc. tri. / buy on upside breakout on increased volume

Citizens Communi (13.1700, 13.2400, 13.0400, 13.1900 -0.0200)



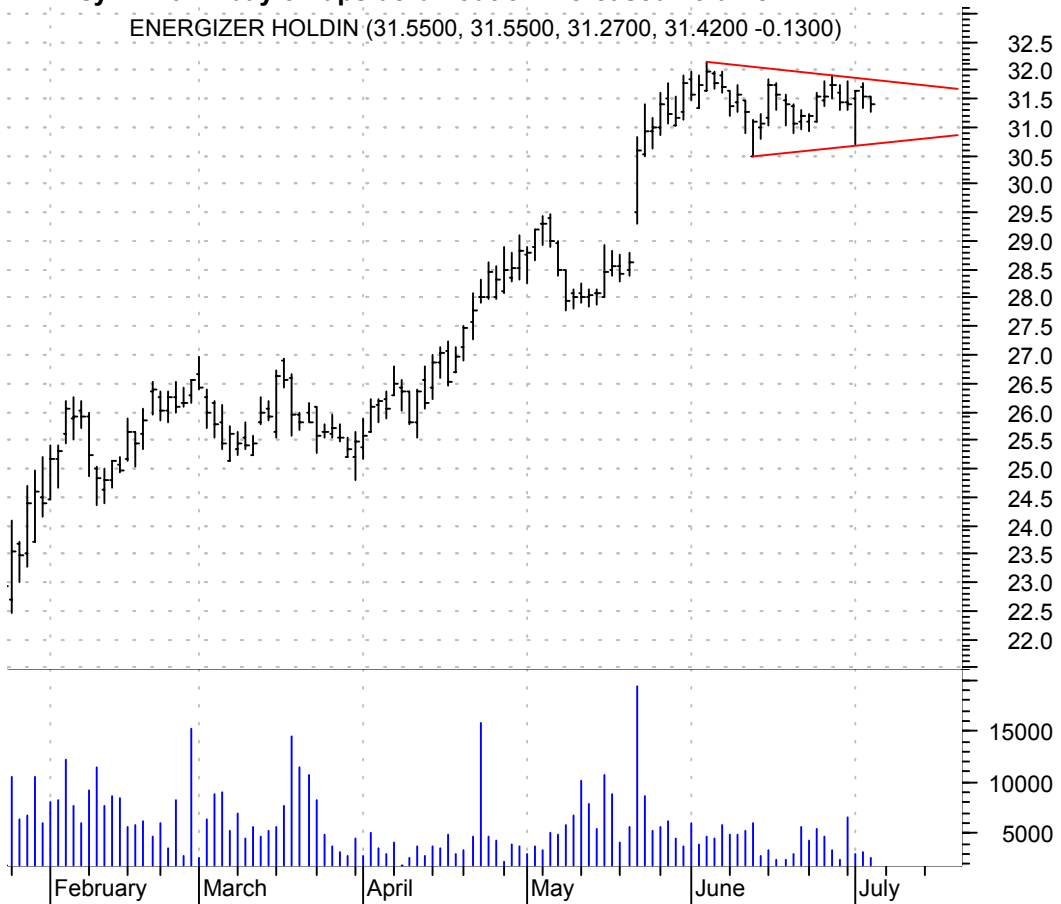
DCN asc. tri. / buy on upside breakout on increased volume

Dana Corp:NYSE (11.7800, 11.9200, 11.6100, 11.7900 +0.0200)



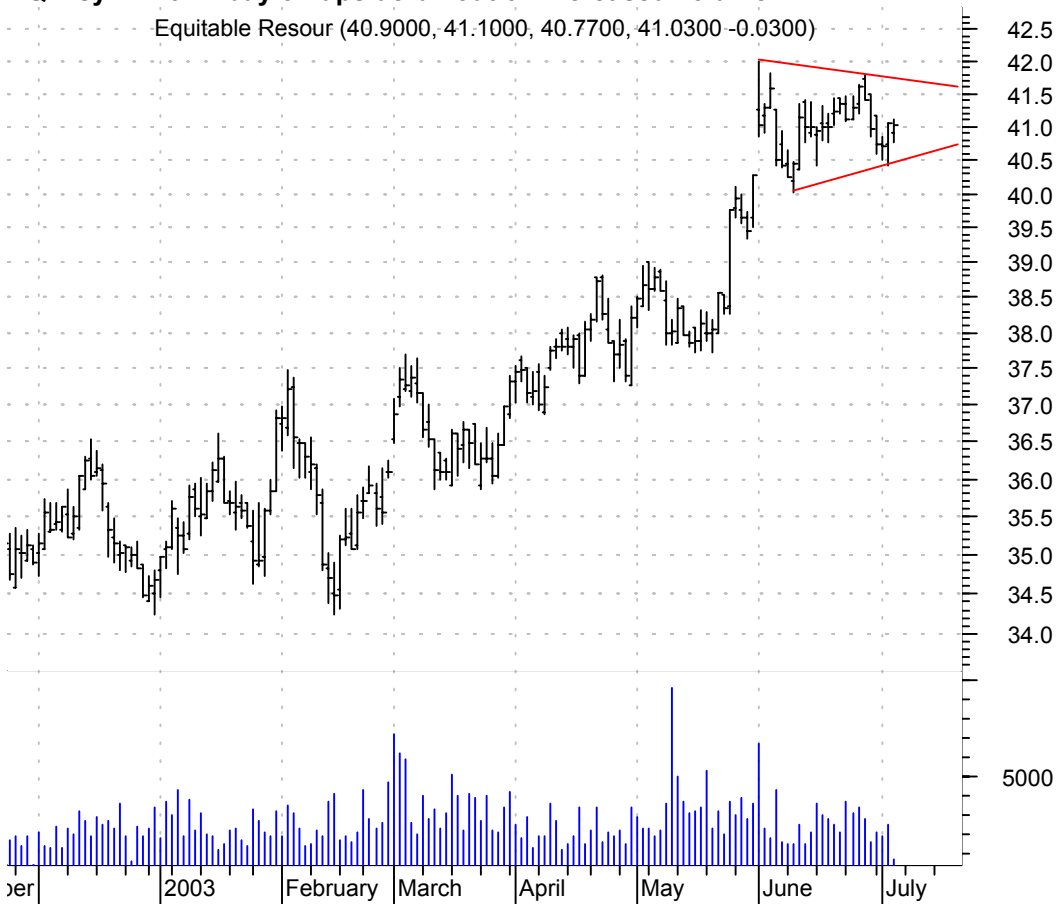
ENR symm. tri. / buy on upside brkout on increased volume

ENERGIZER HOLDIN (31.5500, 31.5500, 31.2700, 31.4200 -0.1300)



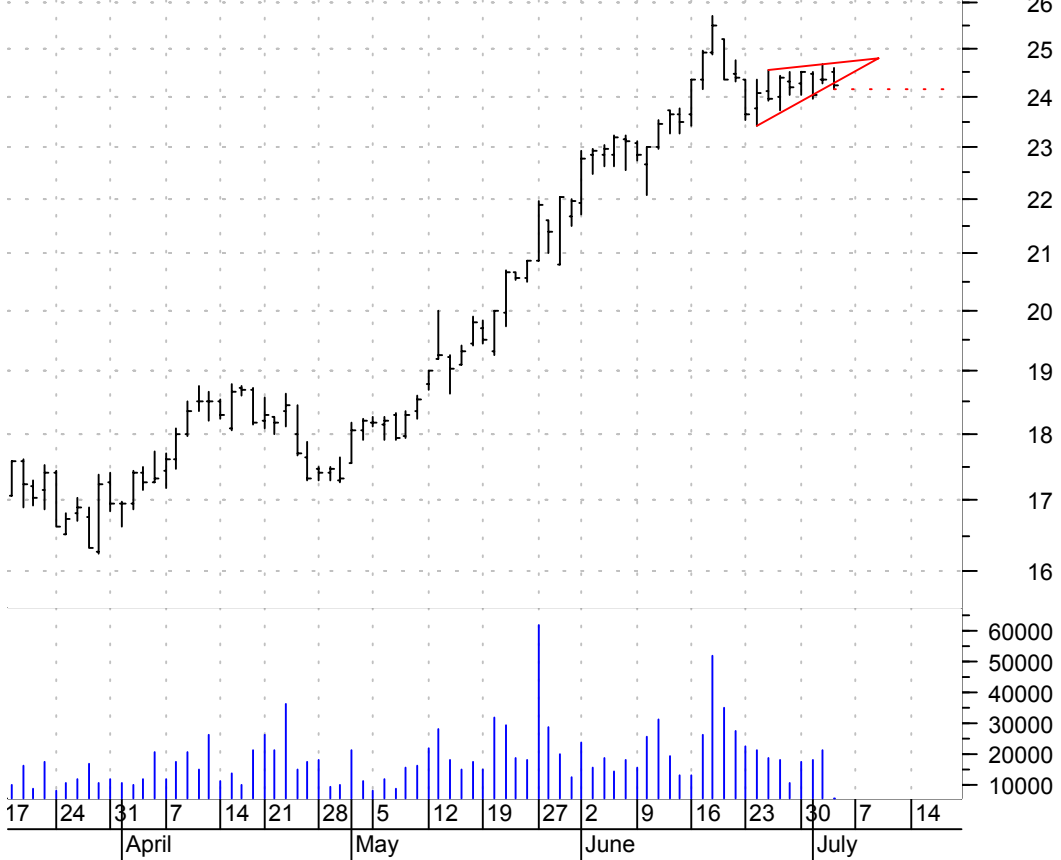
EQT symm. tri. / buy on upside brkout on increased volume

Equitable Resour (40.9000, 41.1000, 40.7700, 41.0300 -0.0300)



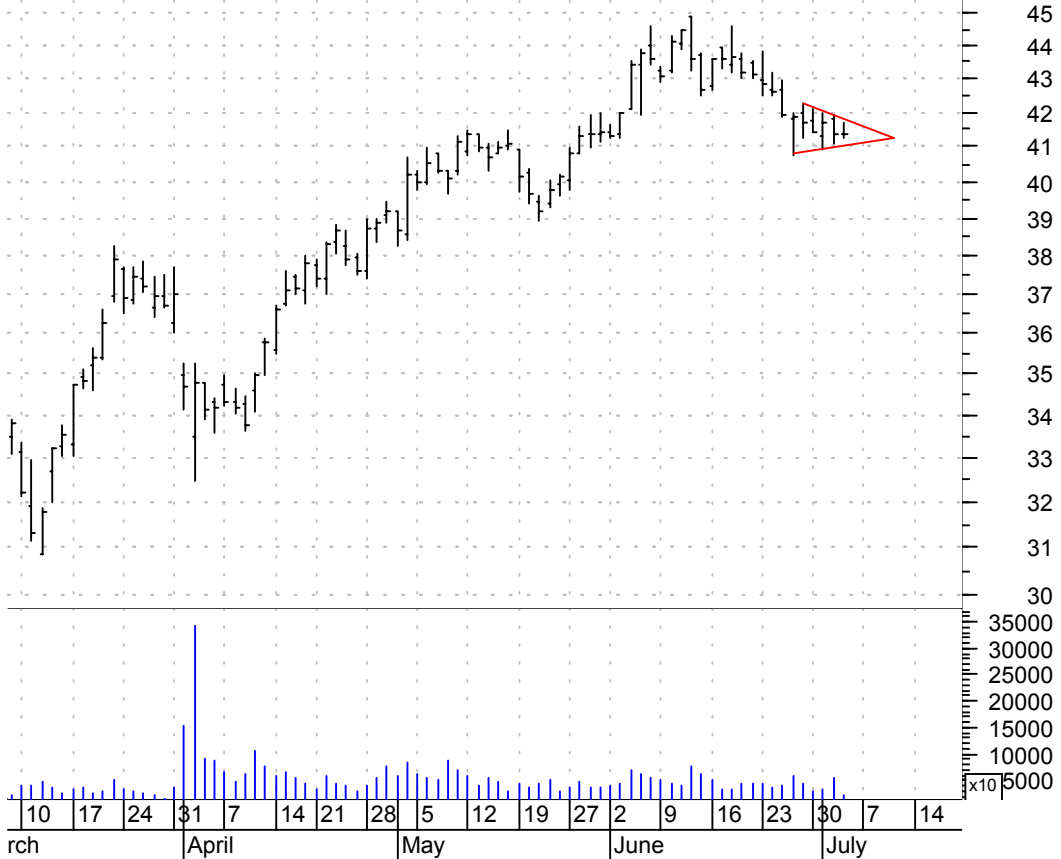
FCX rising wedge brkout / sell on downside follow thru (dotted red line) on decent volume

Freeport McMoran (24.5000, 24.6000, 24.1500, 24.2400 -0.0900)



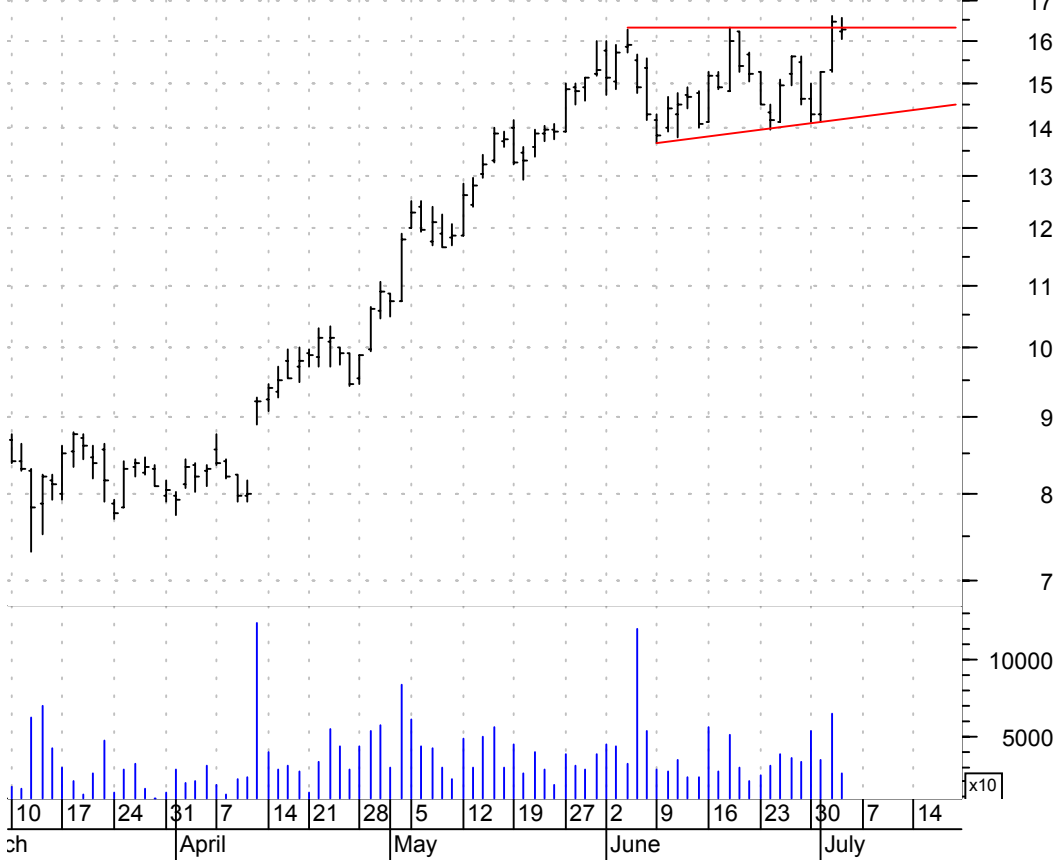
FDC symm. tri. / sell on downside brkout on increased volume

First Data Corp: (41.3400, 41.7000, 41.2400, 41.3500 +0.0100)



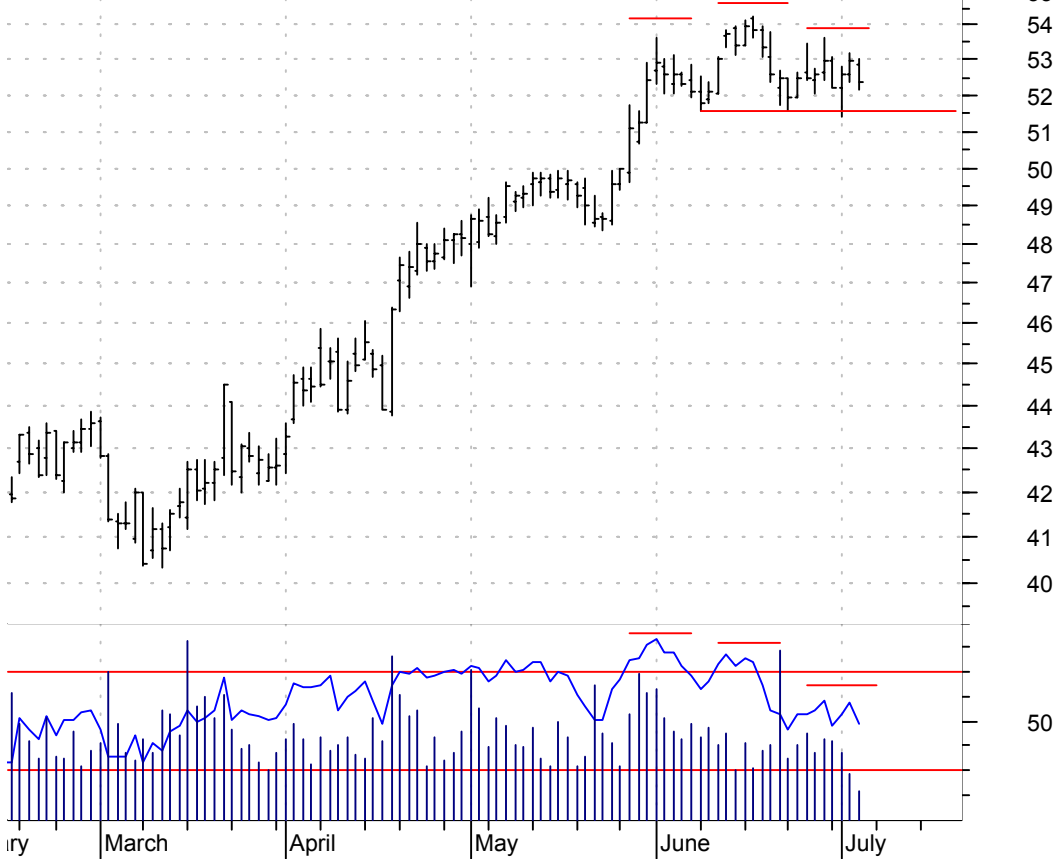
FDRY asc. tri. / buy on upside brkout on increased volume

FOUNDRY NETWORKS (16.2100, 16.5600, 16.0400, 16.2600 -0.2200)



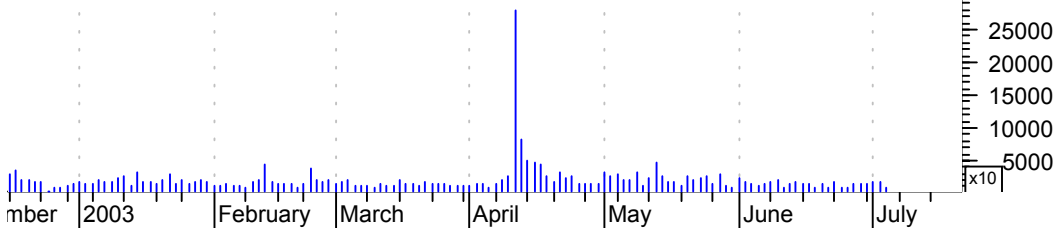
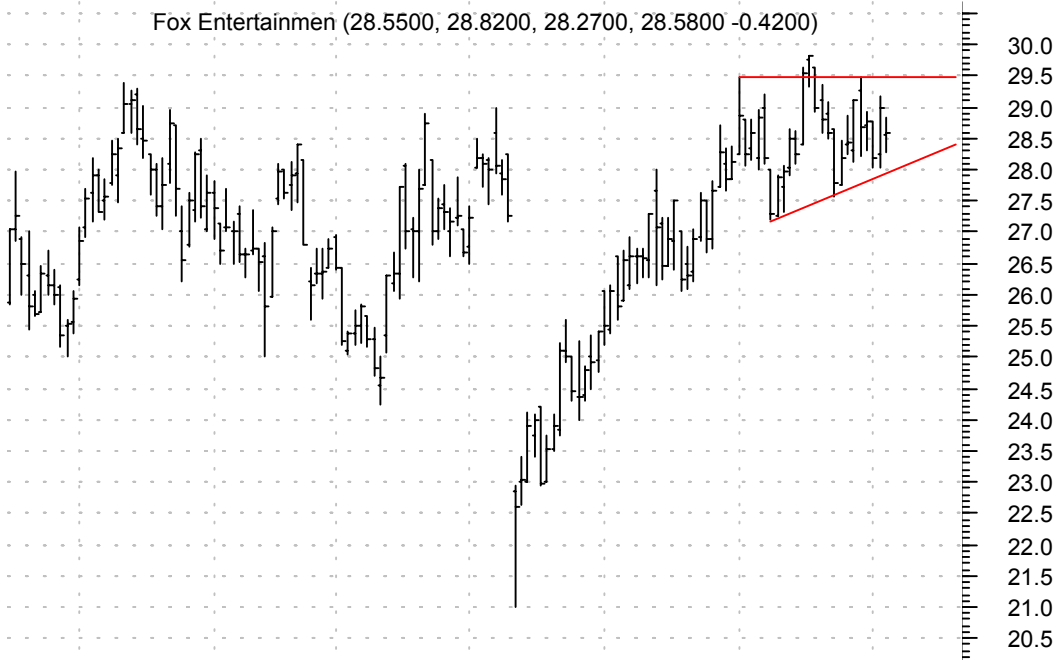
FO h. & sh. / sell on downside brkout on increased volume

Fortune Brands:N (52.8500, 53.0400, 52.1400, 52.3500 -0.6400)



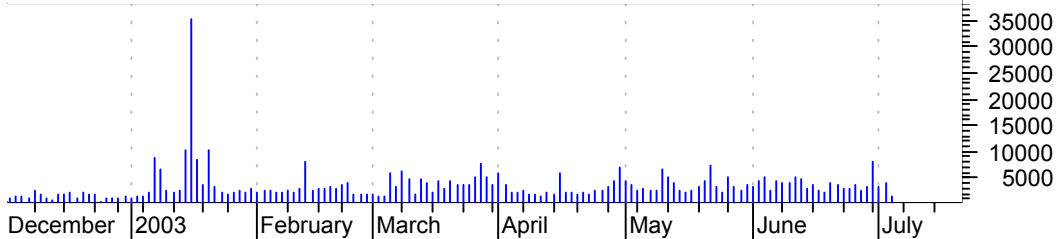
FOX sloppy asc. tri. / buy on upside brkout on increased volume

Fox Entertainmen (28.5500, 28.8200, 28.2700, 28.5800 -0.4200)



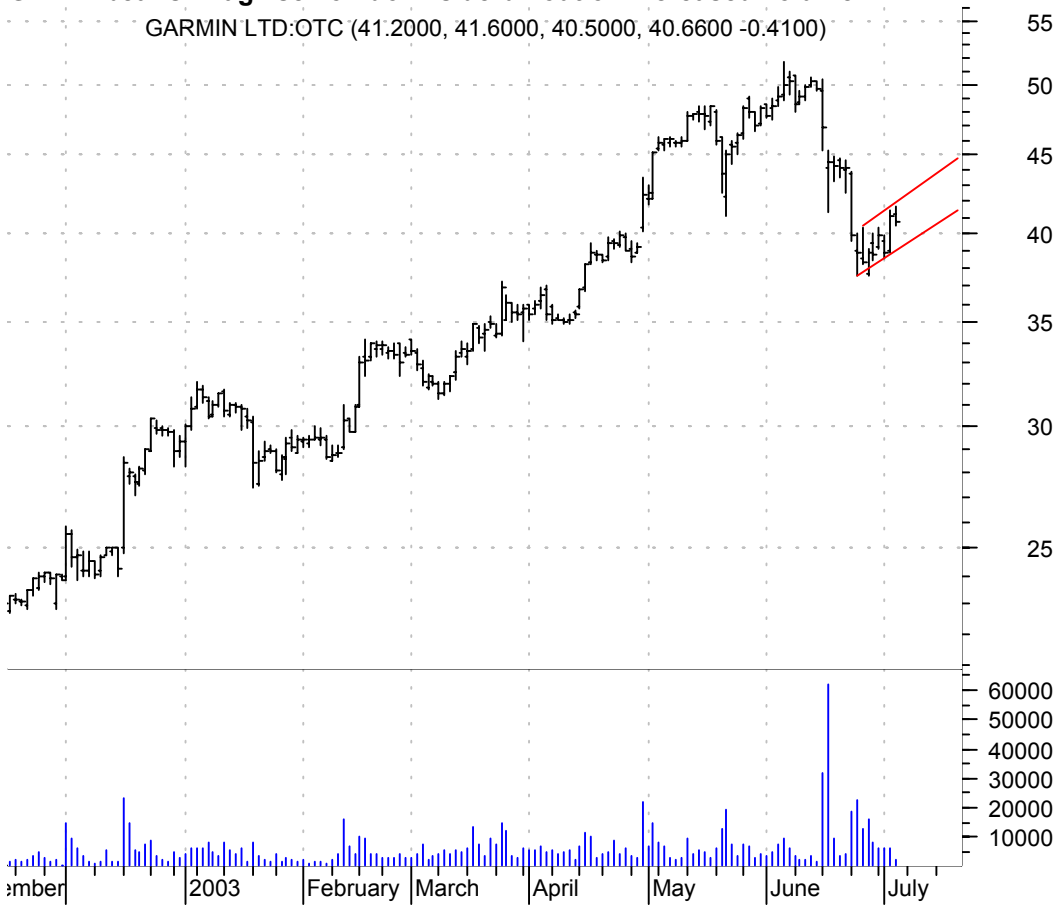
FST falling wedge / buy on upside brkout on increased volume

Forest Oil Cp:NY (24.9500, 25.4000, 24.8000, 25.2400 +0.2100)



GRMN bearish flag / sell on downside brkout on increased volume

GARMIN LTD:OTC (41.2000, 41.6000, 40.5000, 40.6600 -0.4100)



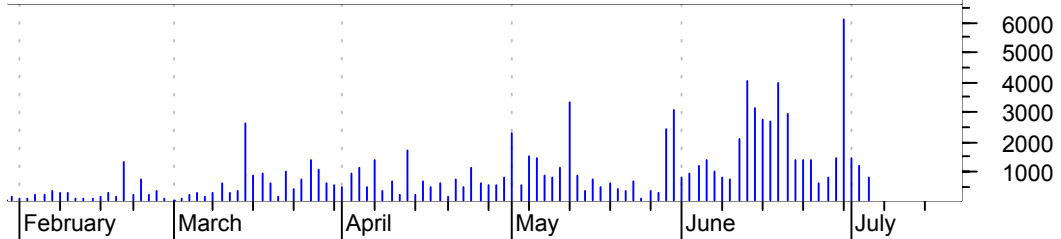
KEA asc. tri. / buy on upside brkout on increased volume

Keane Inc:AMEX (13.8200, 13.8200, 13.5300, 13.5600 -0.2600)



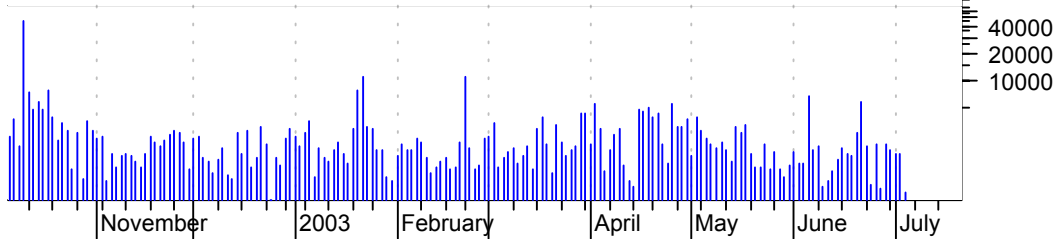
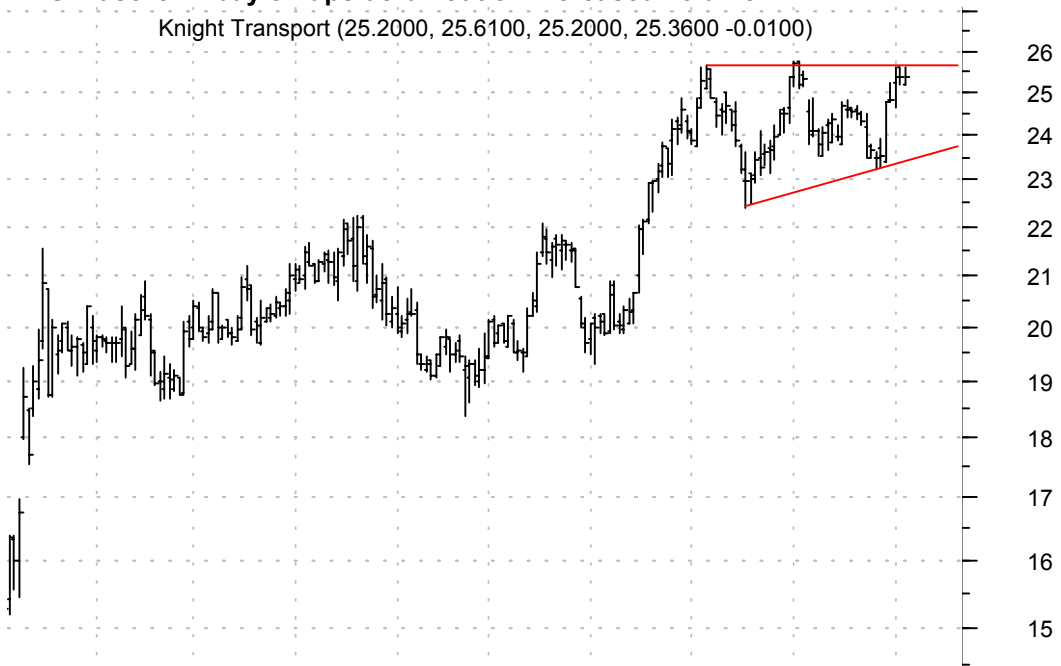
KFRC symm. tri. / buy on upside brkout on increased volume

Kforce Inc:OTC (5.2400, 5.3800, 5.1000, 5.2700 +0.0300)



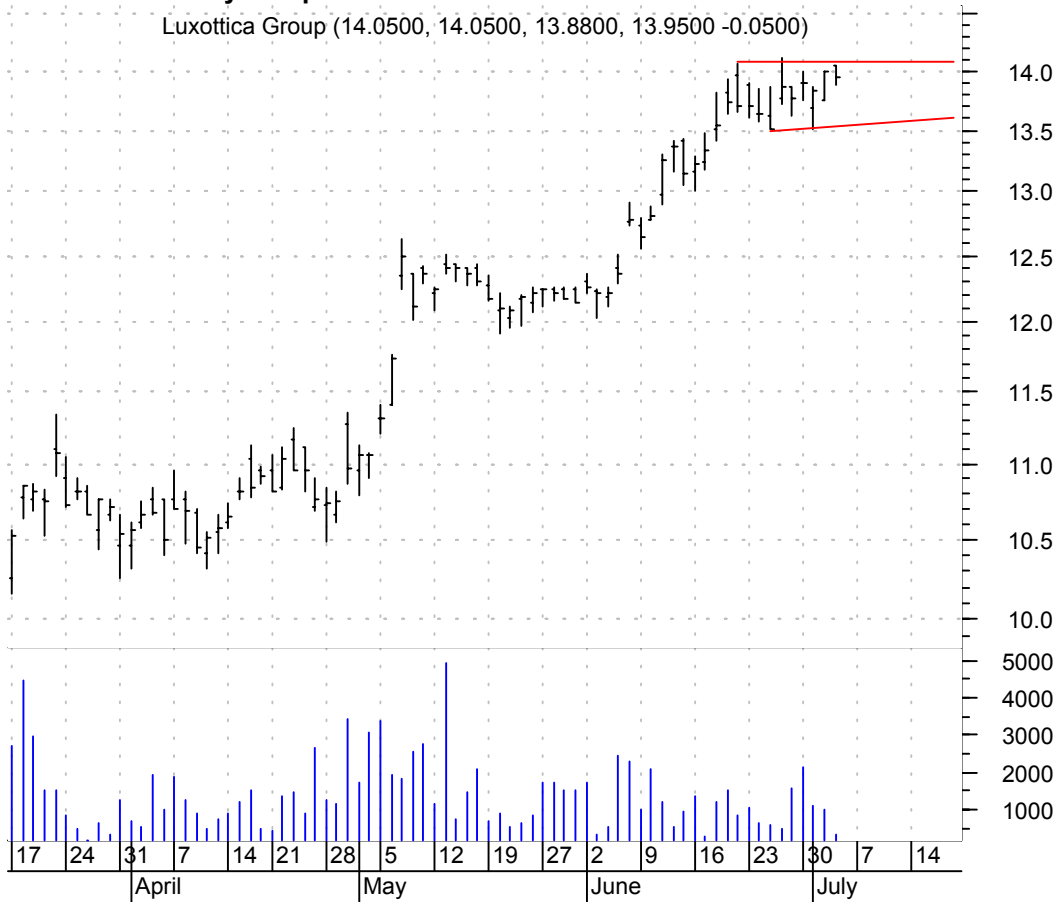
KNGT asc. tri. / buy on upside brkout on increased volume

Knight Transport (25.2000, 25.6100, 25.2000, 25.3600 -0.0100)



LUX asc. tri. / buy on upside breakout on increased volume

Luxtottica Group (14.0500, 14.0500, 13.8800, 13.9500 -0.0500)



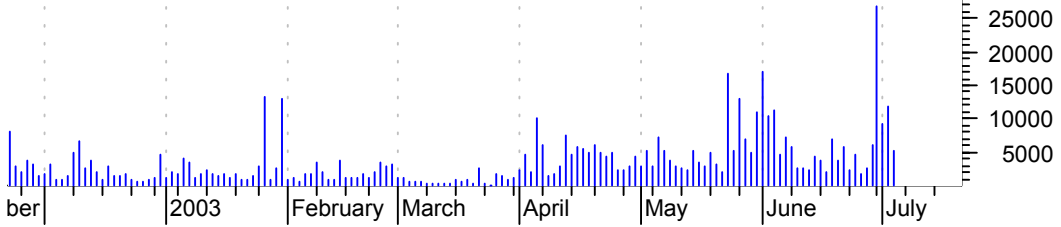
NUFO sloppy bullish flag / buy on upside breakout on increased volume

NEW FOCUS INC:OT (3.7900, 3.9500, 3.7400, 3.9400 +0.0800)



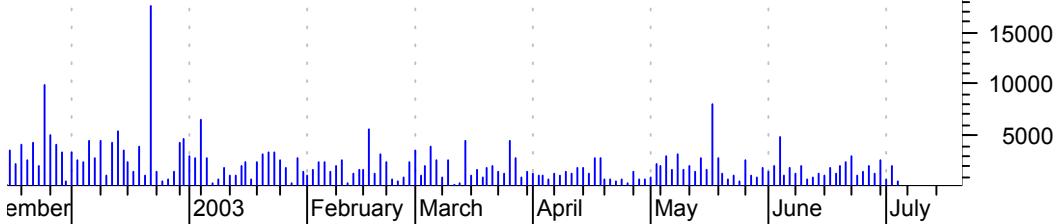
OPSW falling wedge / buy on upside breakout on increased volume

Opware Inc:OTC (4.3900, 4.5300, 4.2000, 4.5200 +0.1200)



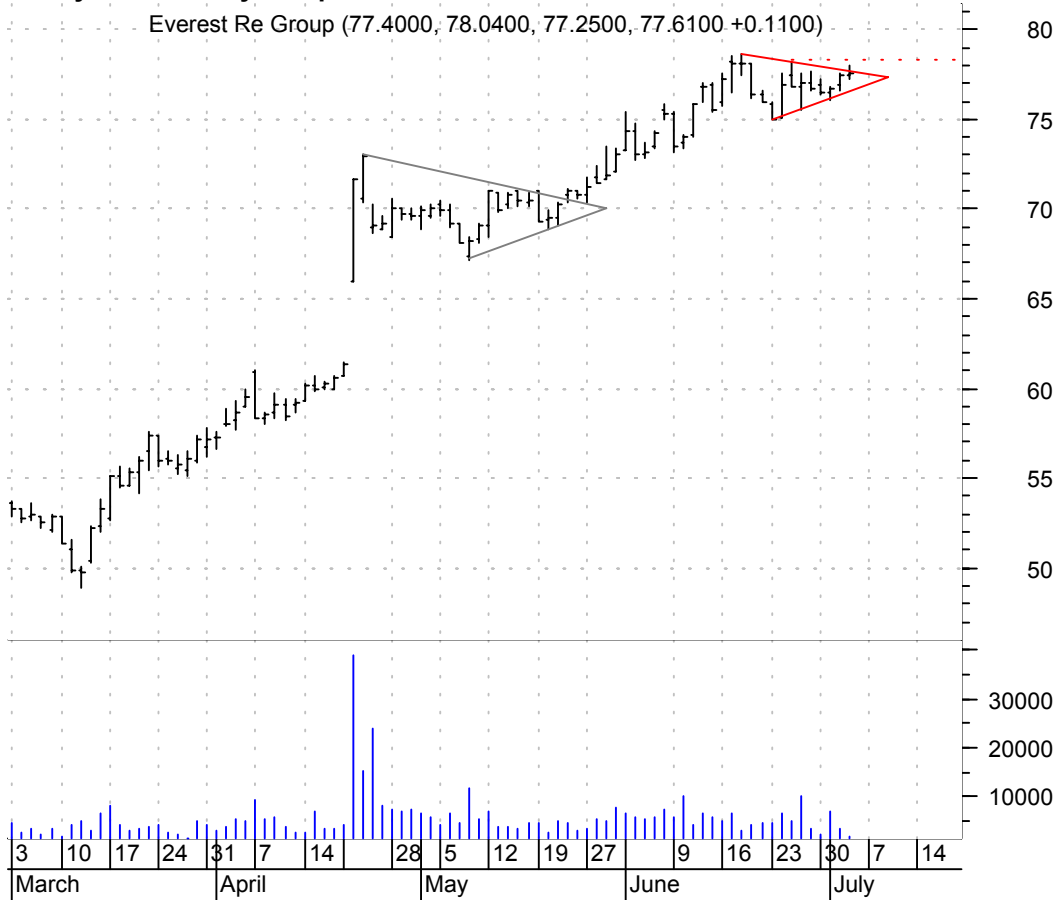
PTMK symm. tri. / buy on upside breakout on increased volume

PATHMARK STORES (7.7800, 7.8500, 7.6200, 7.6200 -0.2200)



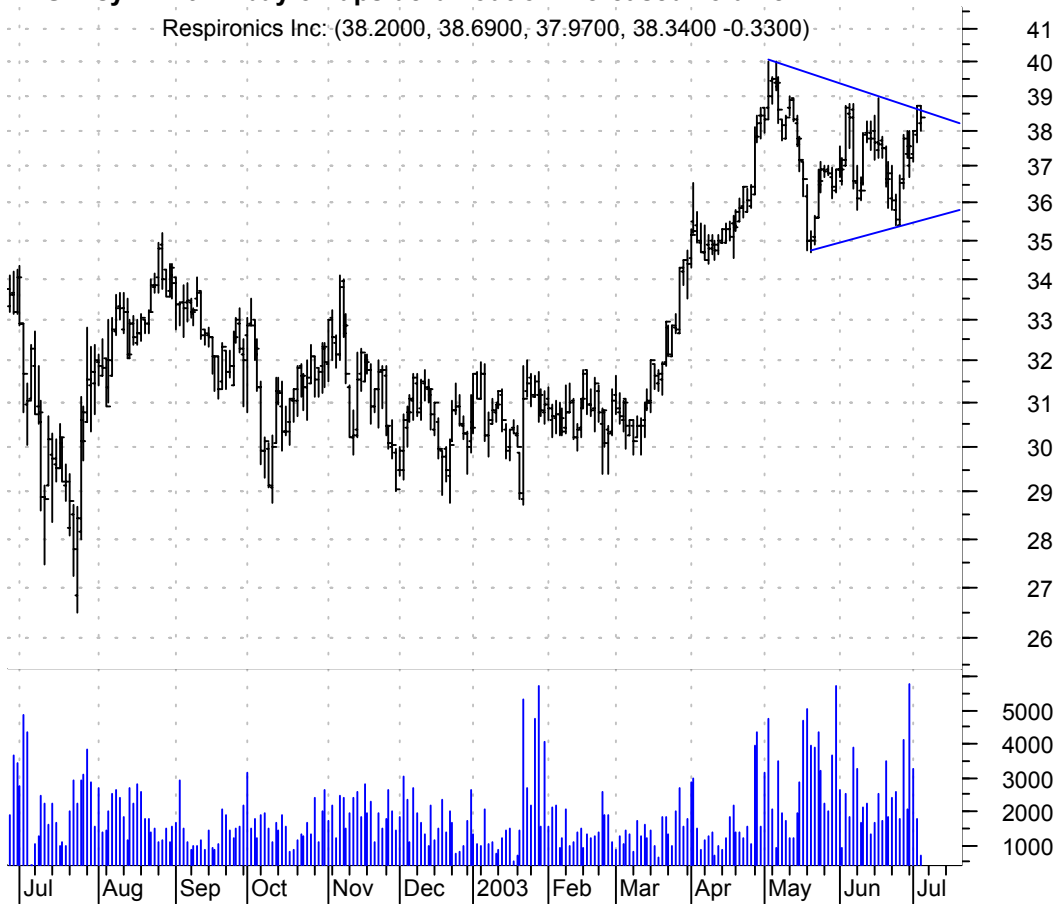
RE symm. tri. / buy on upside brkout thru dotted red line on increased volume

Everest Re Group (77.4000, 78.0400, 77.2500, 77.6100 +0.1100)



RESP symm. tri. / buy on upside brkout on increased volume

Respironics Inc: (38.2000, 38.6900, 37.9700, 38.3400 -0.3300)



SNPS symm. tri. / buy on upside breakout on increased volume

Synopsys Inc:OTC (63.2100, 63.4900, 62.5100, 62.6500 -0.6700)



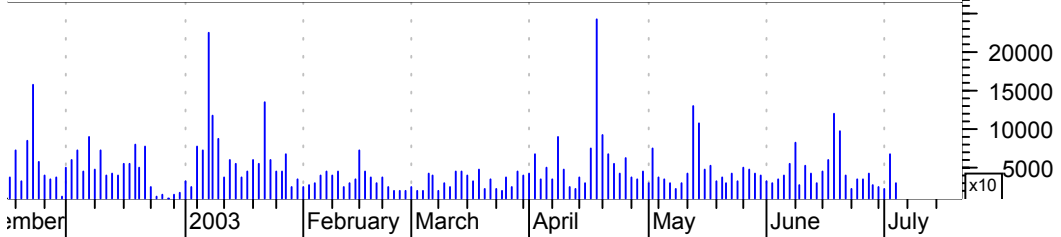
SWIR symm. tri. preceded by 'pole-like' move / buy on upside breakout on increased volume

SIERRA WIRELESS (6.0900, 6.5900, 6.0000, 6.5200 +0.1200)



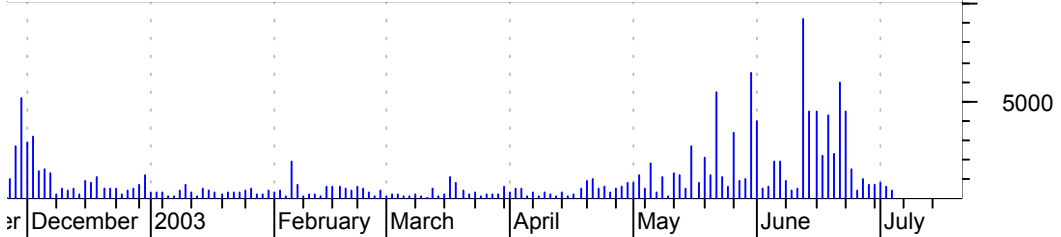
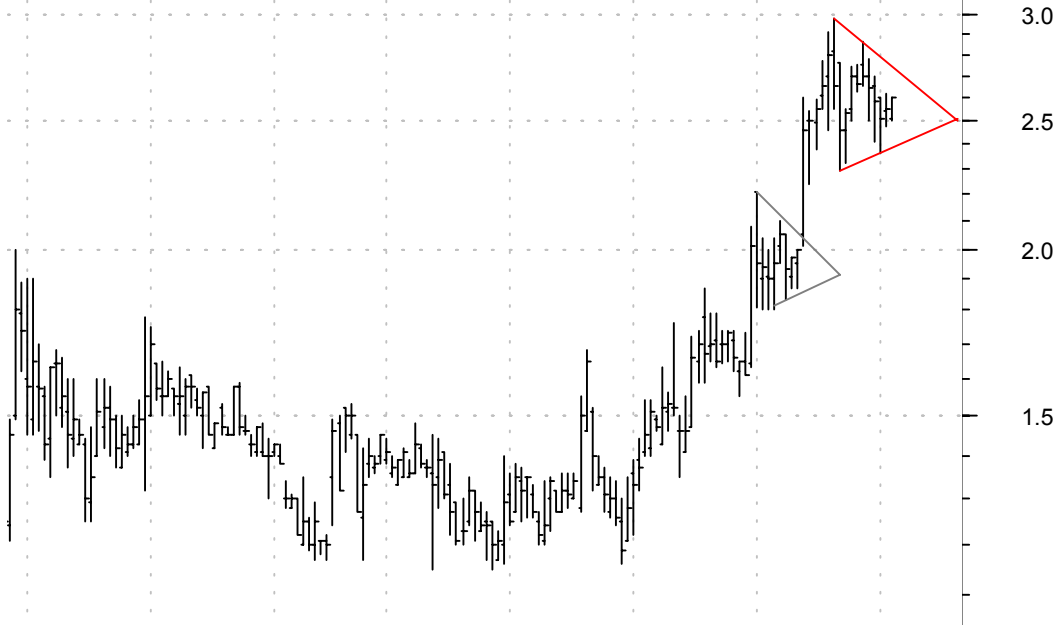
SWKS symm. tri. / buy on upside breakout on increased volume

Skyworks Solutio (7.2000, 7.4900, 7.1400, 7.4500 +0.0100)



TMWD sym. tri. preceded by 'pole-like' move / buy on upside breakout on increased volume

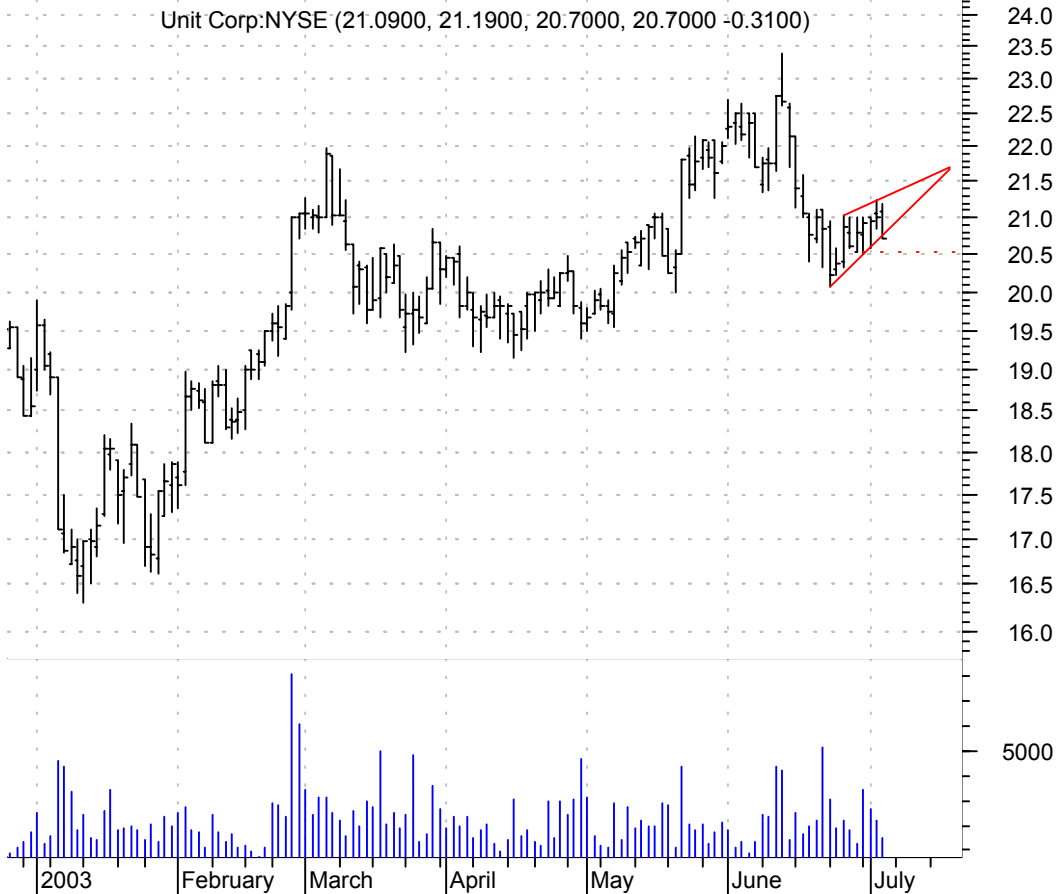
Tumbleweed Comm (2.5100, 2.6000, 2.5000, 2.6000 +0.0500)



ULBI falling wedge / buy on upside brkout on increased volume



UNT rising wedge / sell on downside brkout thru dotted red line on increased volume



WWY symm. tri. / buy on upside brkout on increased volume

Wrigley (Wm Jr) (56.2800, 56.4300, 55.9500, 56.3000 +0.0200)



chartpatterns.com
Chart Pattern Analysis for Timing the Markets

KMatras@aol.com