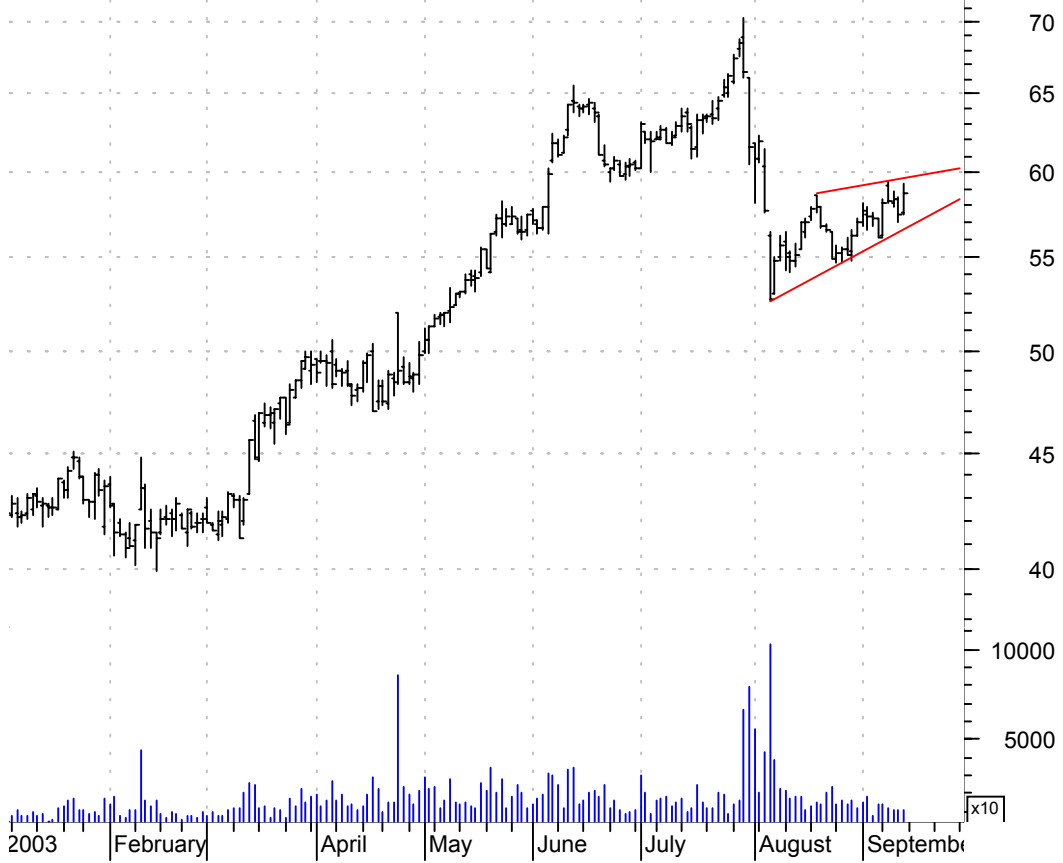


AET rising wedge preceded by 'pole-like' move / sell on downside brkout on increased volume

Aetna Inc:NYSE (57.5300, 59.2900, 57.4500, 58.7700 +1.3700)



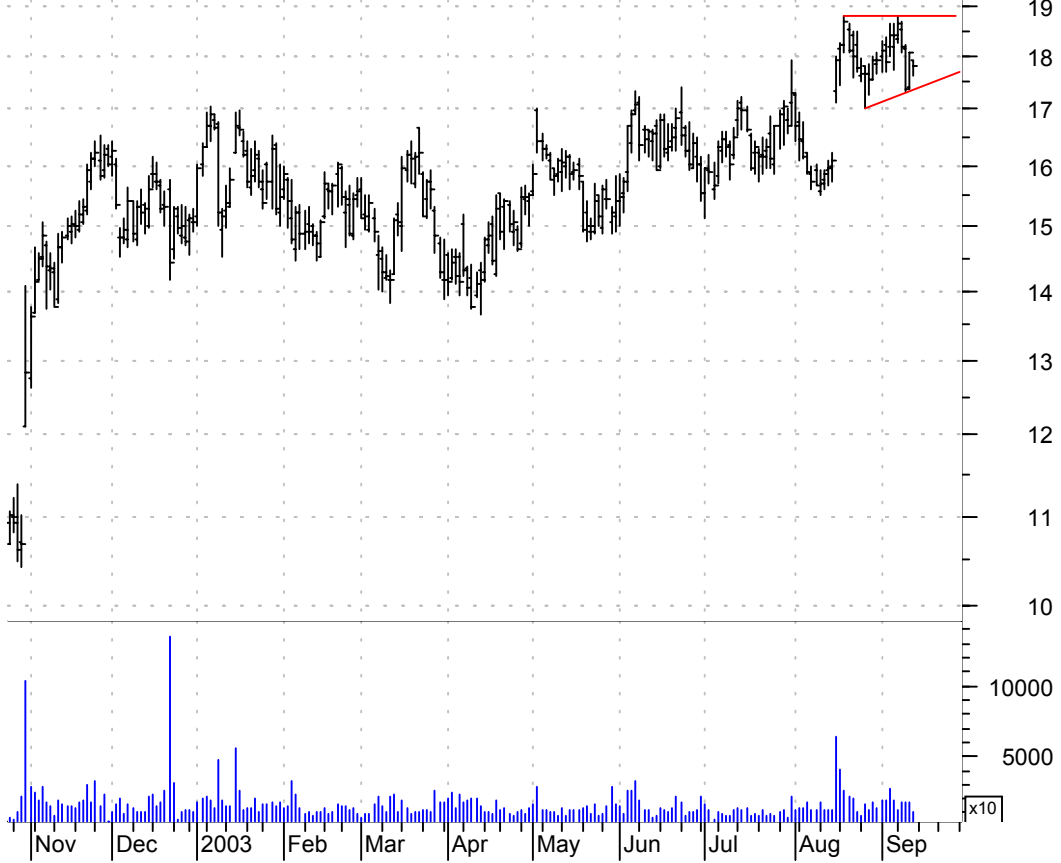
AETH symm. tri. / buy on upside brkout on increased volume

ETHER SYSTEMS I (5.6000, 5.6500, 5.5000, 5.6300 +0.0400)



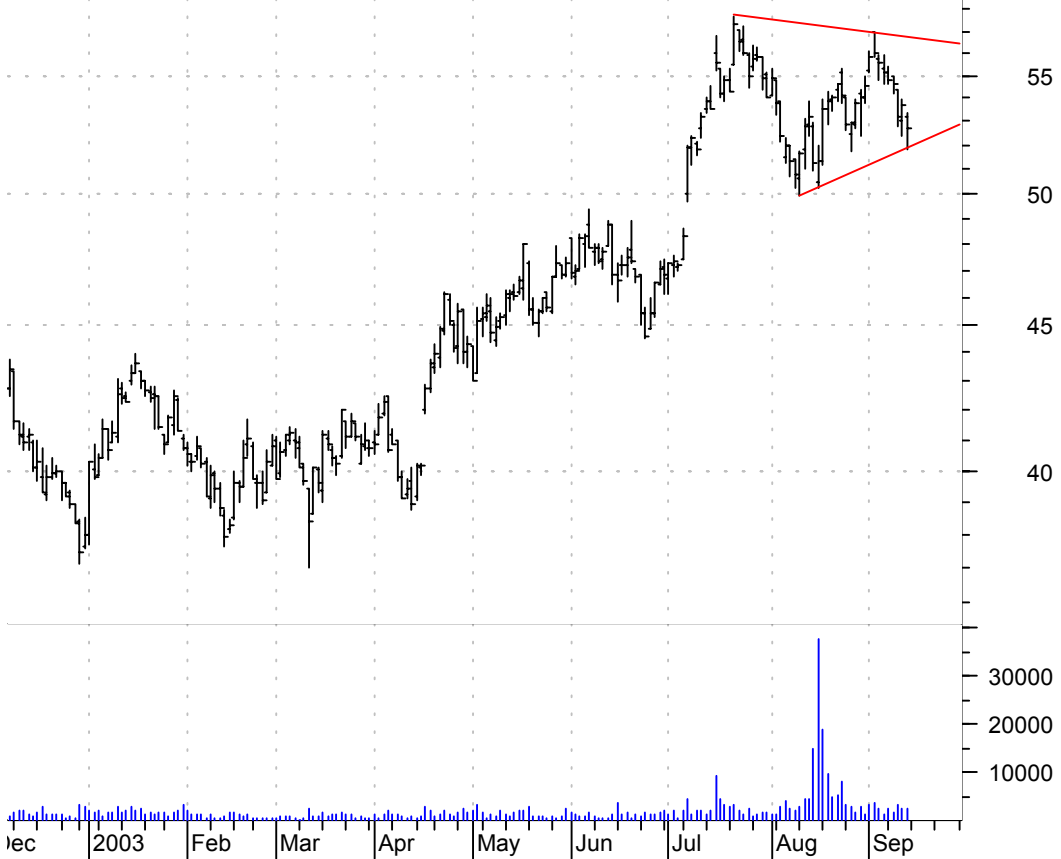
APCC asc. tri. / buy on upside brkout on increased volume

Amer Power Conve (17.9200, 17.9200, 17.6200, 17.8000 -0.2500)



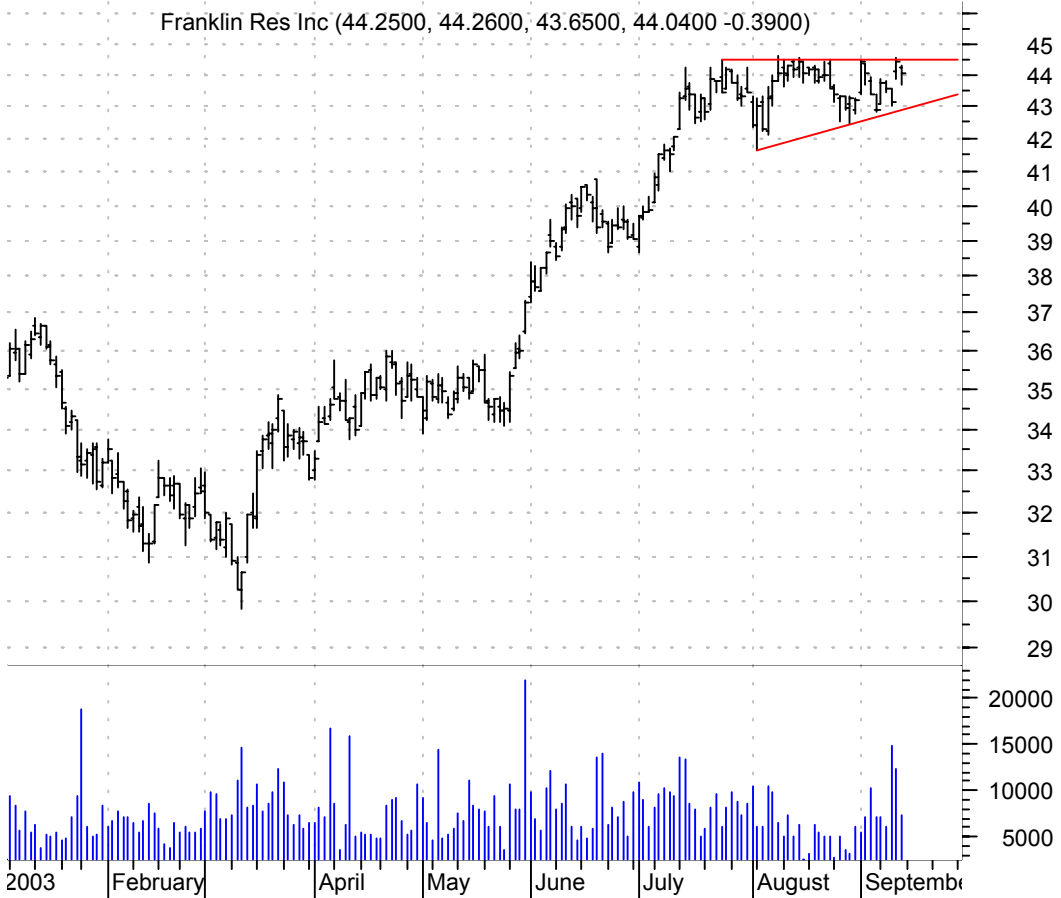
APH symm. tri. / buy on upside brkout on increased volume

Amphenol Cp:NYSE (53.2300, 53.3400, 51.8500, 52.7000 -1.0300)



BEN asc. tri. / buy on upside brkout on increased volume

Franklin Res Inc (44.2500, 44.2600, 43.6500, 44.0400 -0.3900)



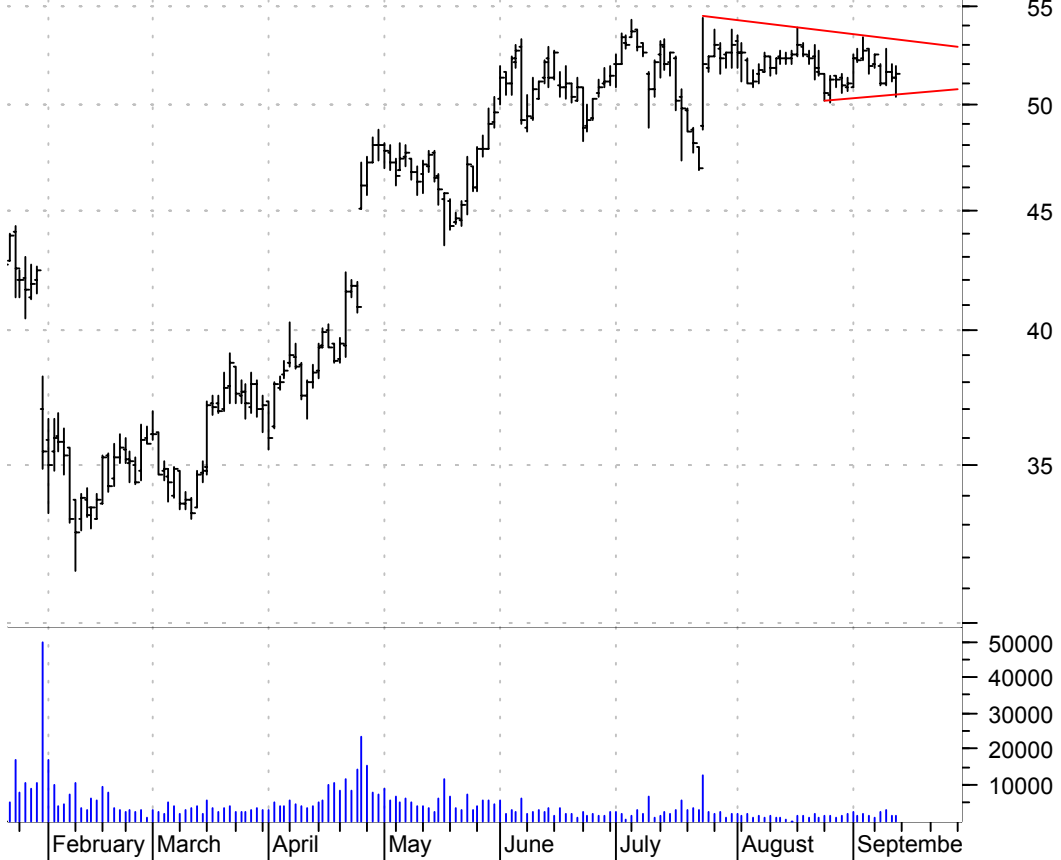
BER symm. tri. / buy on upside brkout on increased volume

Berkley W R Cp:N (33.5300, 33.9500, 33.2800, 33.7700 +0.1400)



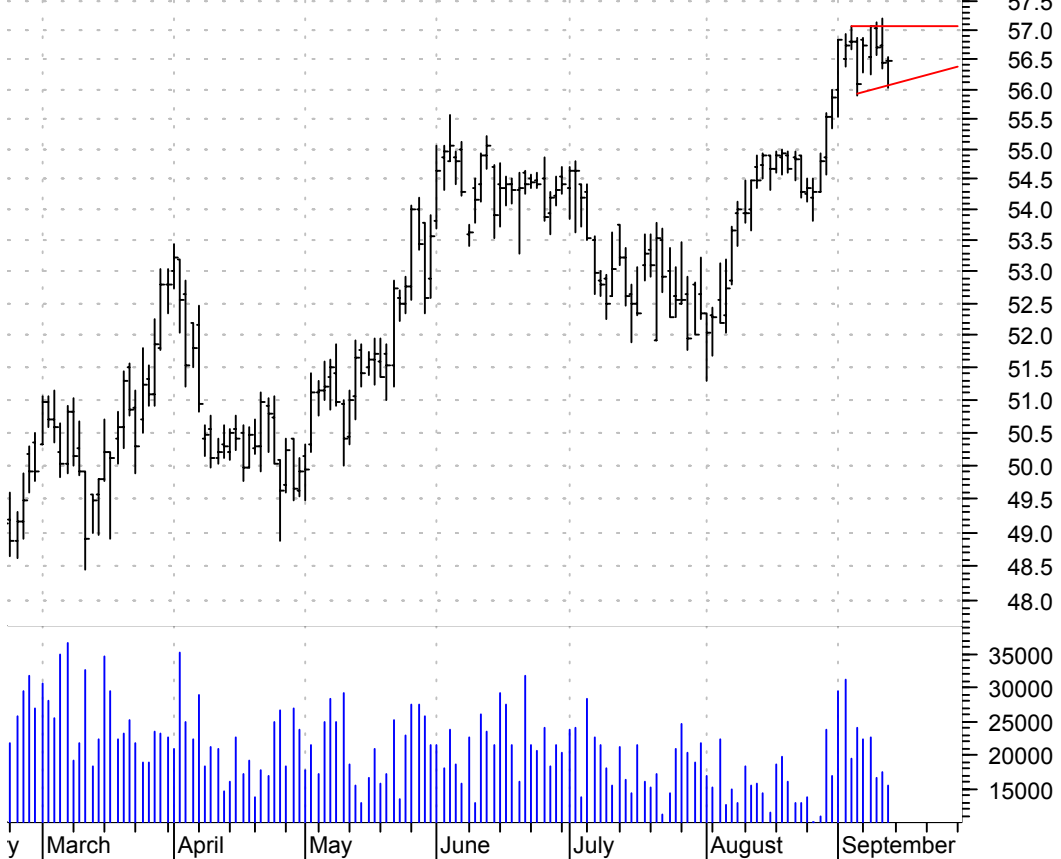
COLM symm. tri. / buy on upside breakout on increased volume

Columbia Sportsw (51.2700, 51.8500, 50.3900, 51.5000 +0.1800)



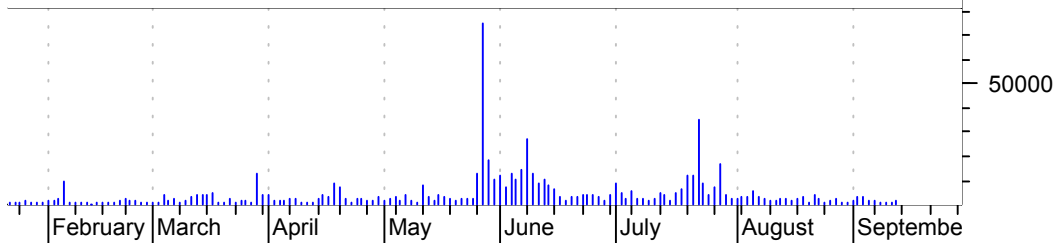
COP sloppy asc. tri. preceded by 'pole-like' move / buy on upside breakout on increased volume

Conoco Philips:N (56.4900, 56.5500, 56.0300, 56.4900 +0.0400)



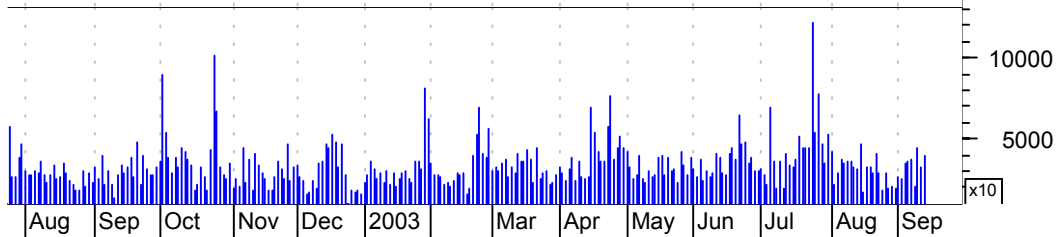
CYBX symm. tri. / buy on upside breakout on increased volume

Cyberonics:OTC (28.0100, 28.8400, 27.8500, 28.7400 +0.4600)



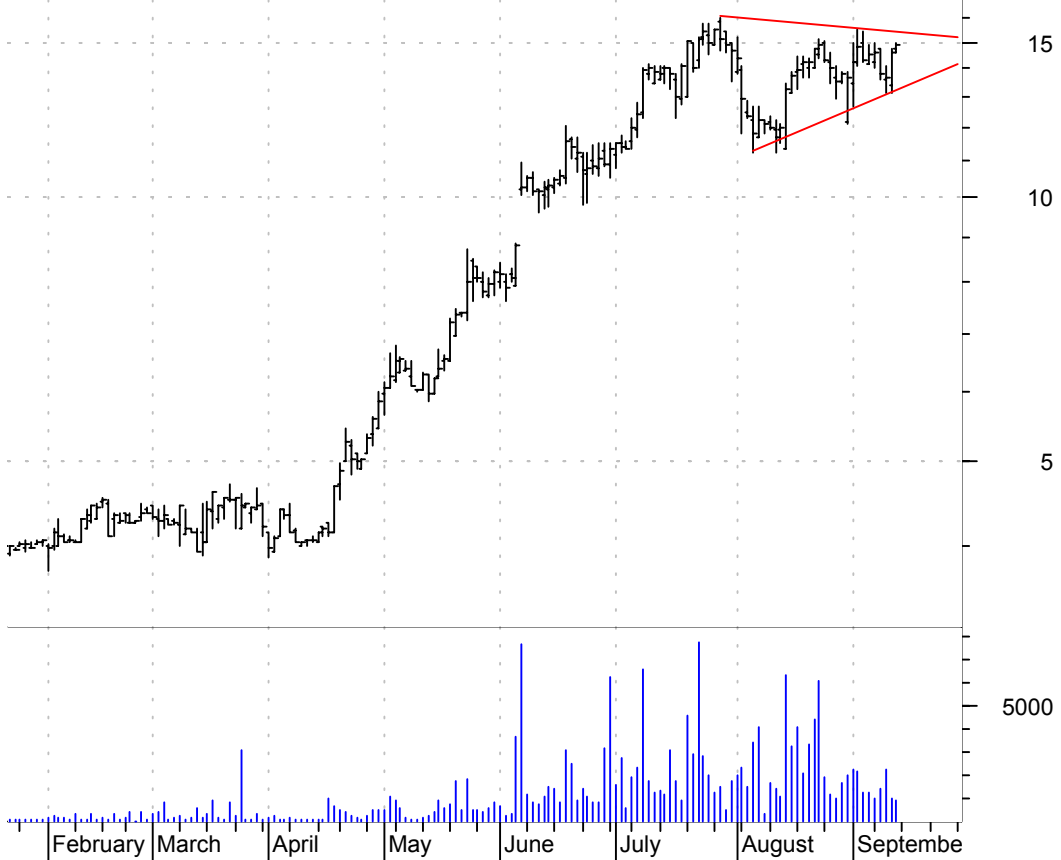
DOW falling wedge preceded by 'pole-like' move / buy on upside breakout on increased volume

Dow Chemical Co: (33.1500, 33.9500, 32.8200, 33.7800 +0.6800)



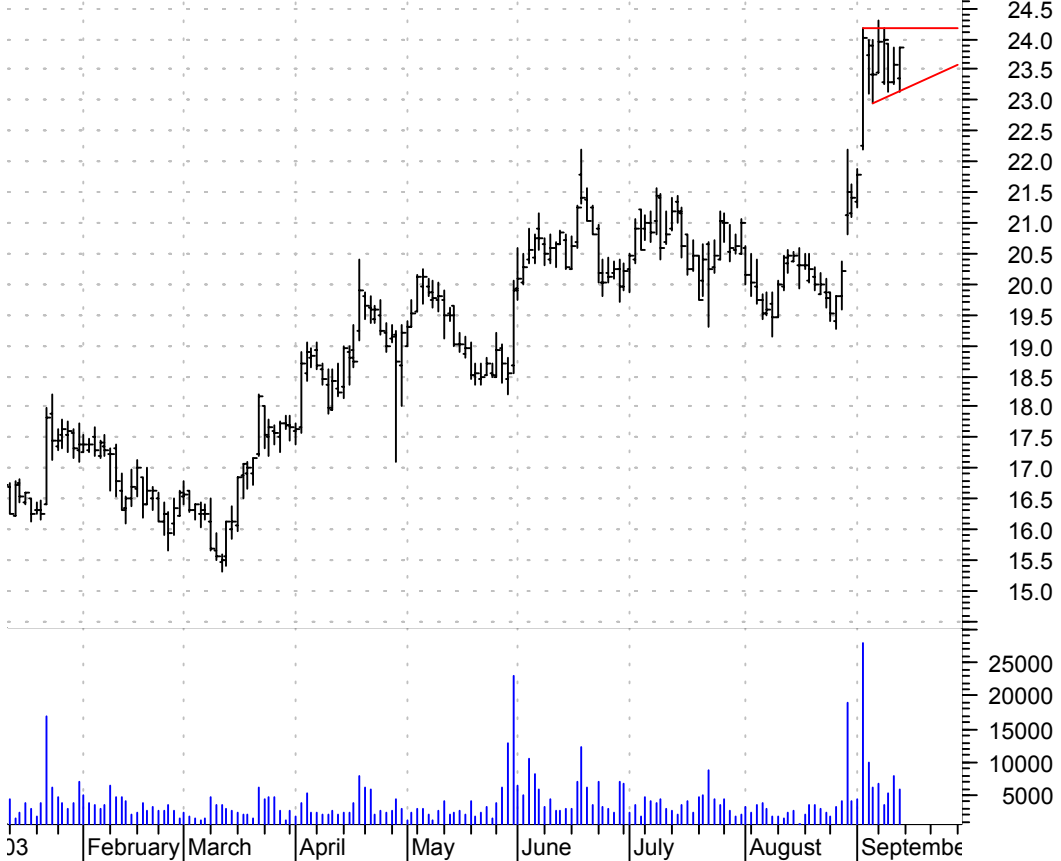
ECLG sloppy symm. tri. / buy on upside brkout on increased volume

ECOLLEGE.COM:OTC (14.7900, 15.0000, 14.6100, 14.9000 +0.3100)



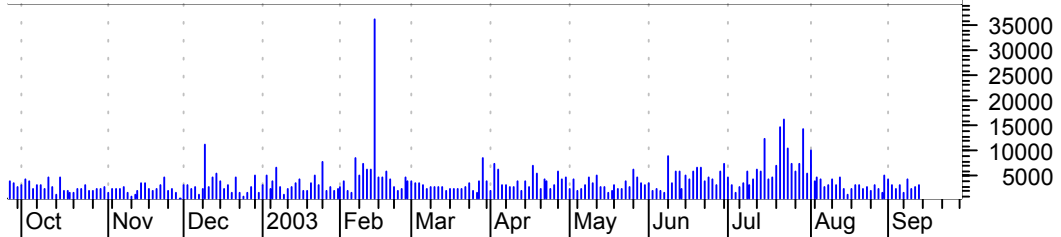
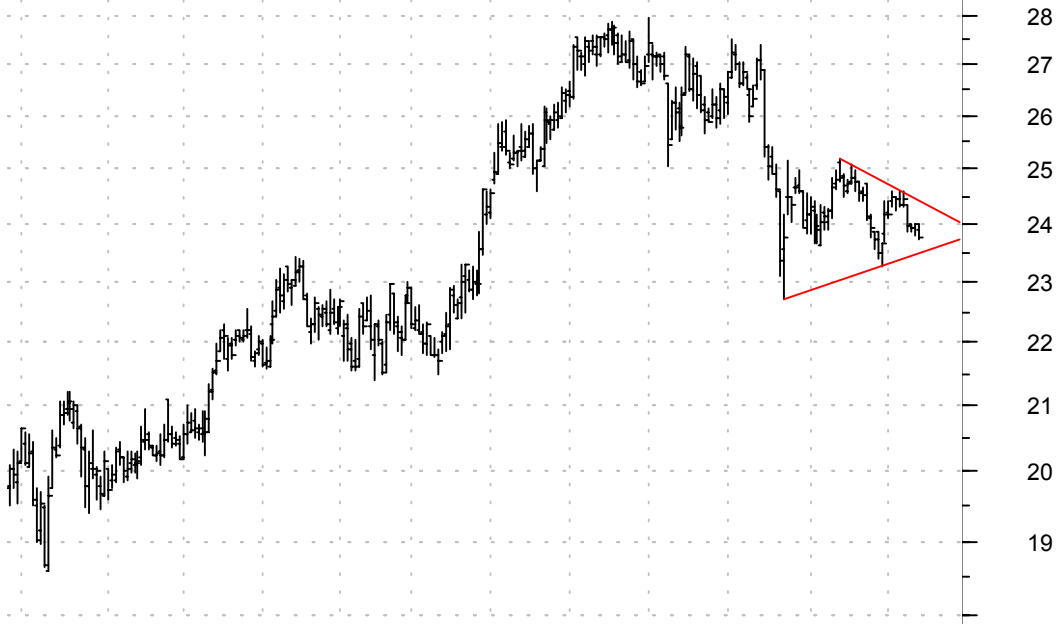
EFIL sloppy asc. tri. preceded by 'pole-like' move / buy on upside brkout on increased volume

Electronics For (23.3500, 23.8700, 23.1500, 23.8500 +0.2600)



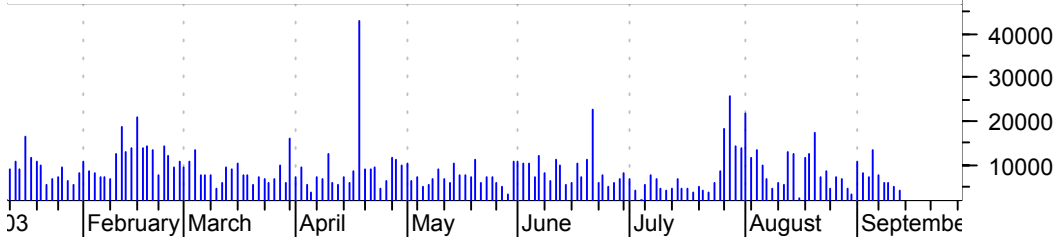
FAF symm. tri. / sell on downside brkout on increased volume

First American C (23.9100, 23.9900, 23.7200, 23.7700 -0.2300)



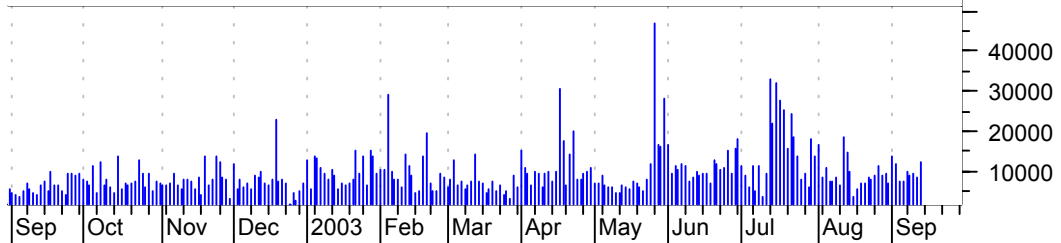
FHCC symm. tri. / buy on upside brkout on increased volume

First Health Gro (26.9600, 27.4300, 26.9500, 27.3500 +0.1300)



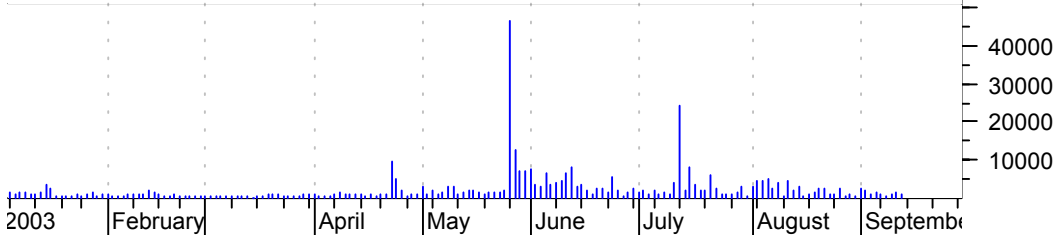
FNF symm. tri. / sell on downside brkout on increased volume

Fidelity Natl Fi (28.3600, 28.8100, 28.2900, 28.7800 +0.2900)



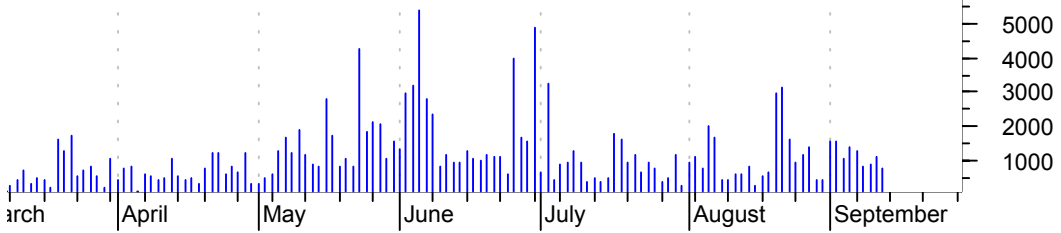
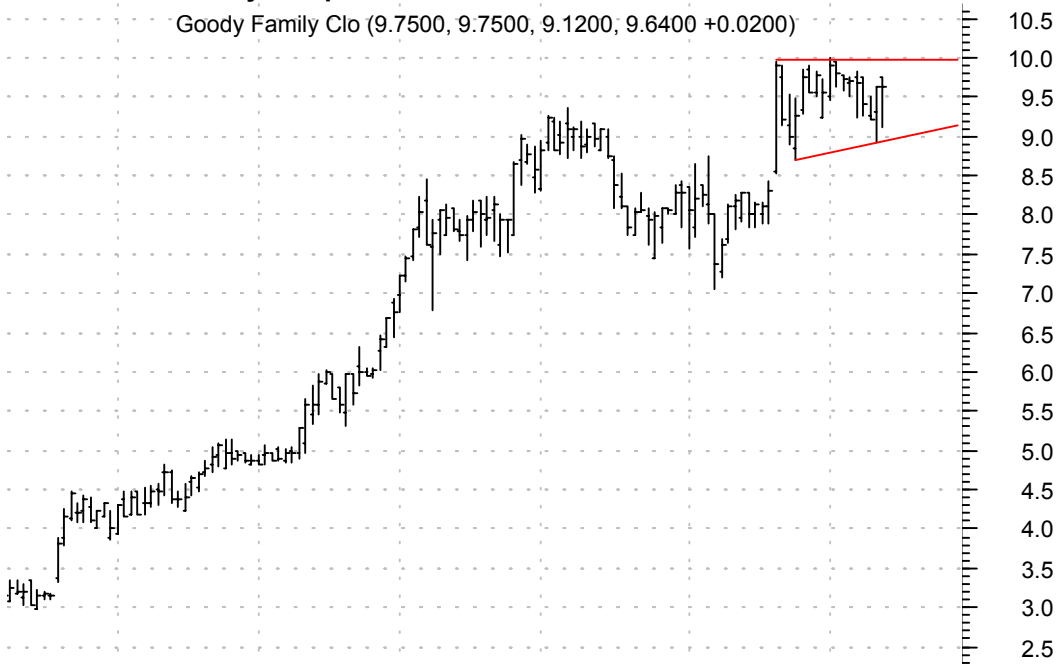
FNIS symm. tri. / sell on downside brkout on increased volume

Fidelity Nationa (23.4000, 23.8700, 23.3300, 23.6700 +0.1700)



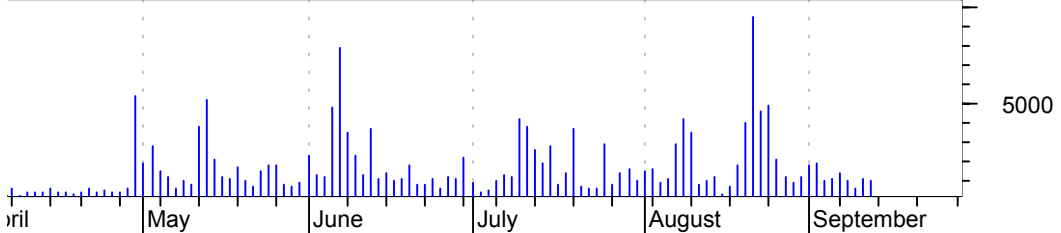
GDYS asc. tri. / buy on upside brkout on increased volume

Goody Family Clo (9.7500, 9.7500, 9.1200, 9.6400 +0.0200)



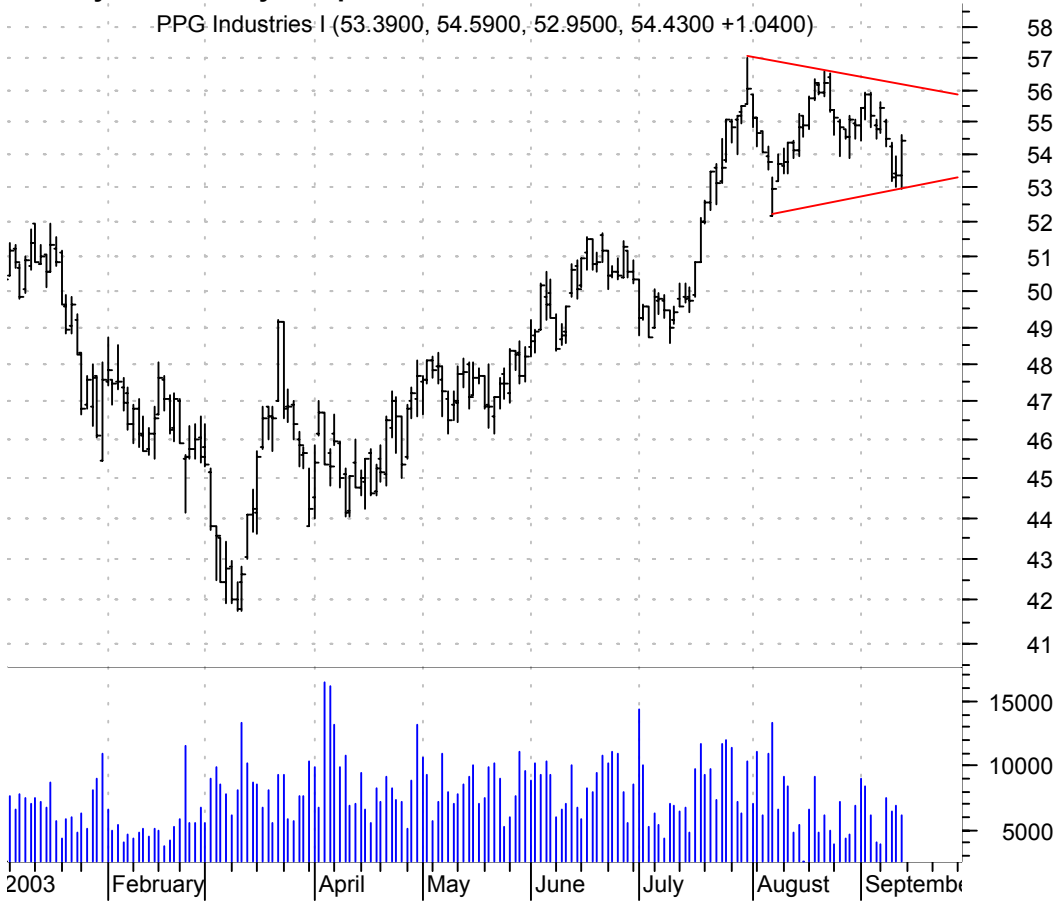
MRGE symm. tri. / buy on upside brkout on increased volume

Merge Technologi (16.4000, 16.7900, 16.4000, 16.7500 +0.1500)



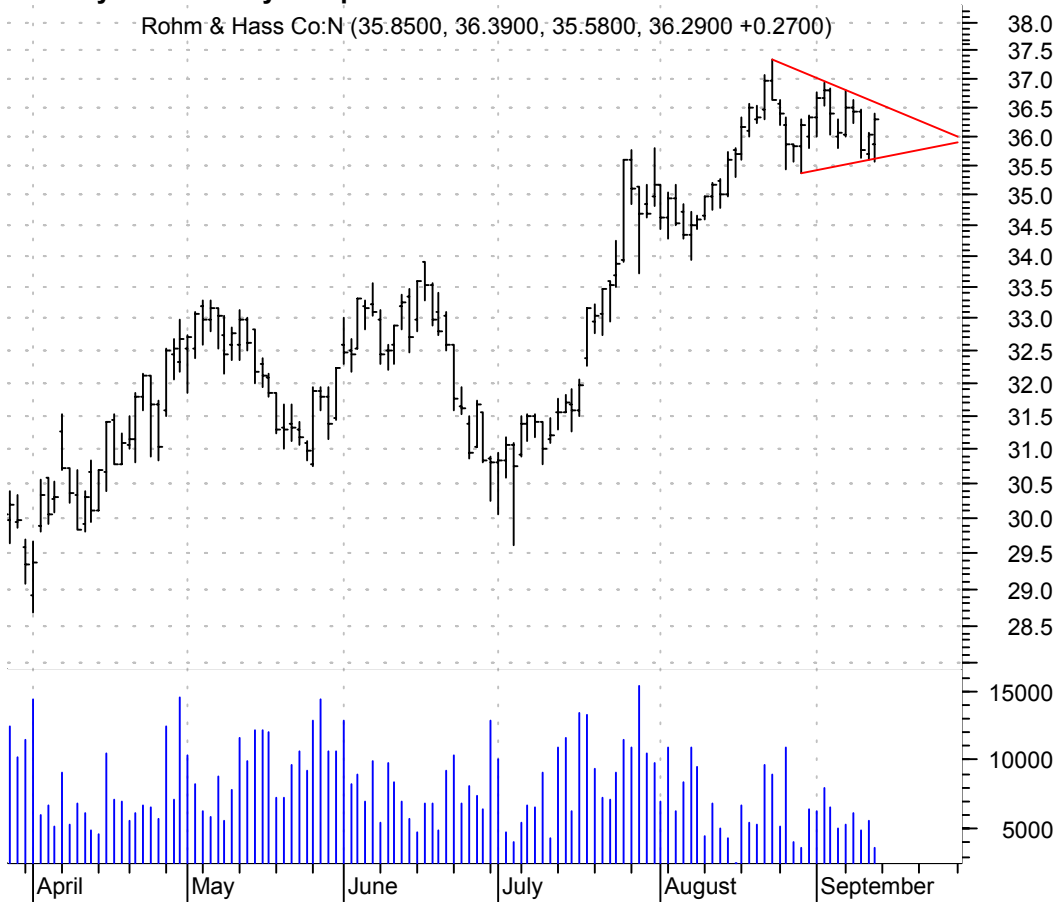
PPG symm. tri. / buy on upside brkout on increased volume

PPG Industries I (53.3900, 54.5900, 52.9500, 54.4300 +1.0400)



ROH symm. tri. / buy on upside brkout on increased volume

Rohm & Hass Co:N (35.8500, 36.3900, 35.5800, 36.2900 +0.2700)



SOL symm. tri. / buy on upside brkout on increased volume

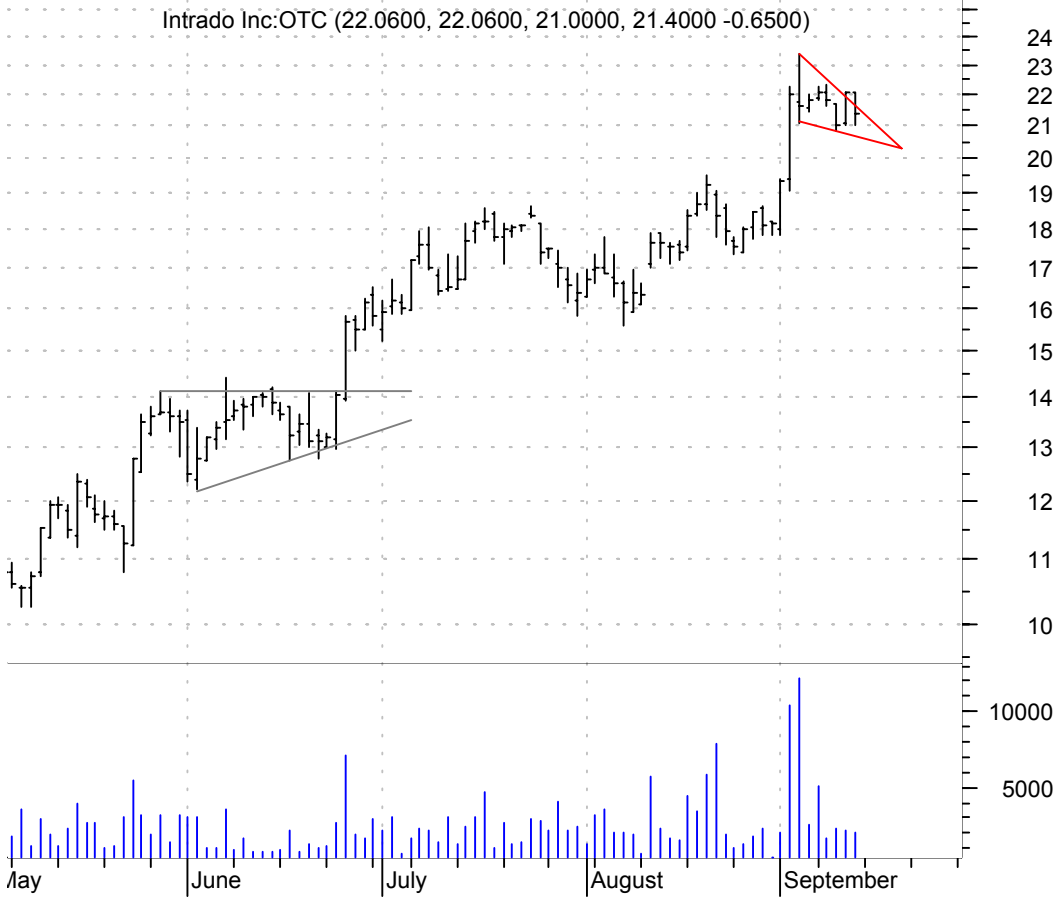


TASR symm. tri. / buy on upside brkout on increased volume



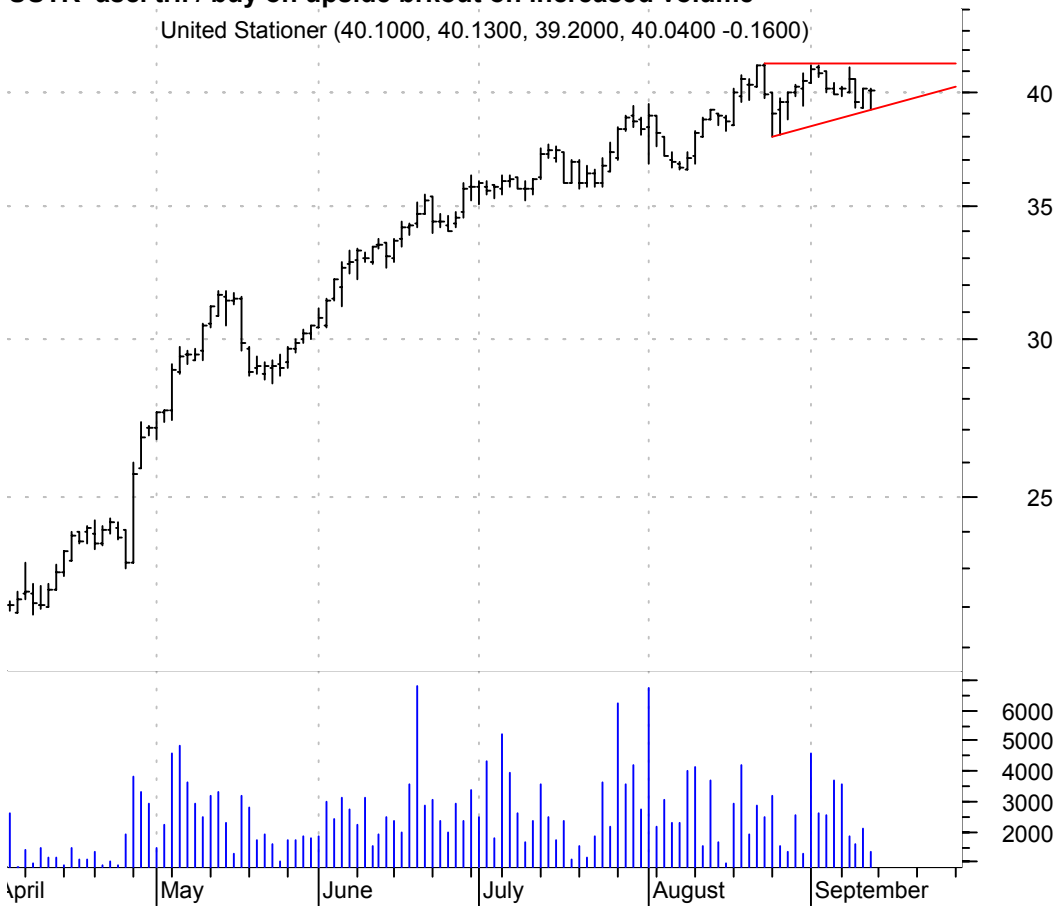
TRDO falling wedge preceded by 'pole-like' move / buy on upside brkout on increased volume

Intrado Inc:OTC (22.0600, 22.0600, 21.0000, 21.4000 -0.6500)

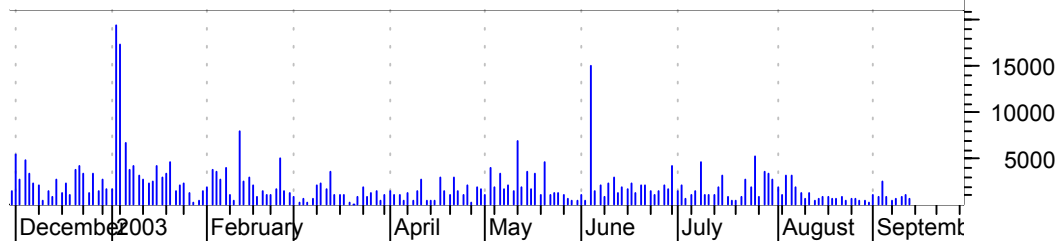


USTR asc. tri. / buy on upside brkout on increased volume

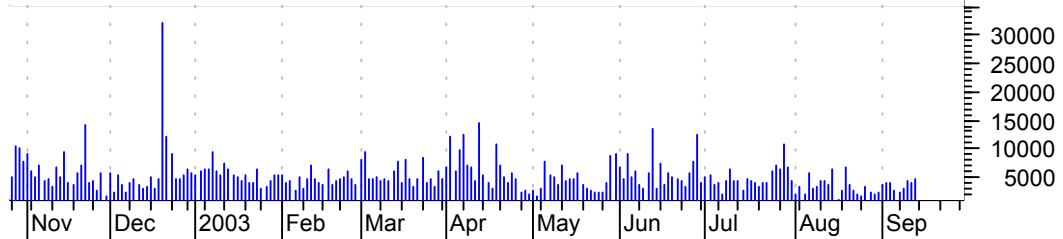
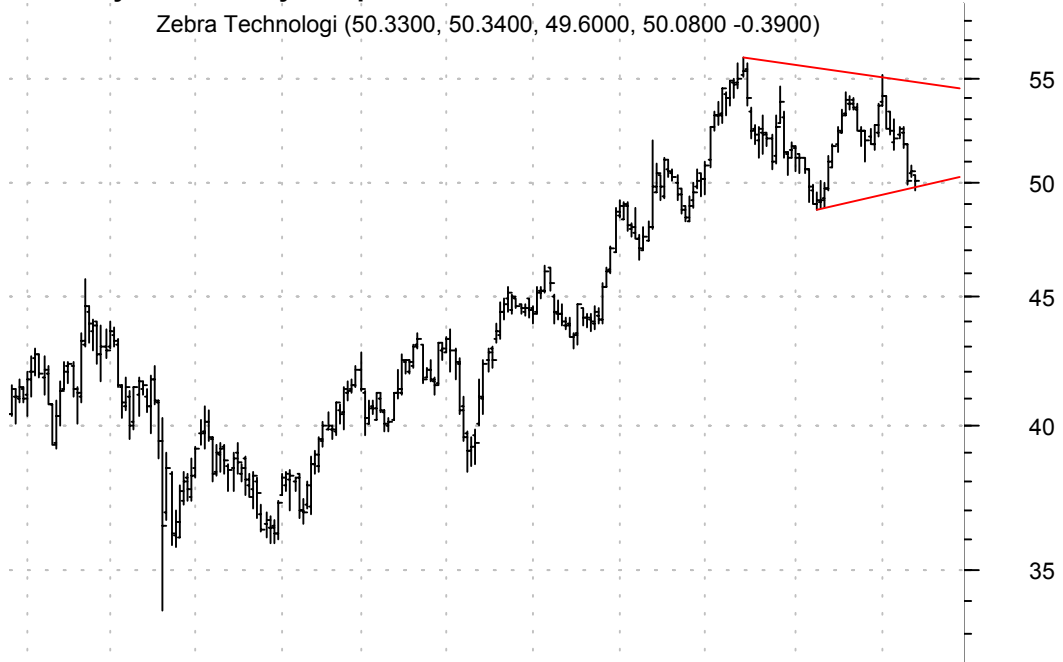
United Stationer (40.1000, 40.1300, 39.2000, 40.0400 -0.1600)



WC symm. tri. / buy on upside brkout thru dotted red line on increased volume



ZBRA symm. tri. / buy on upside brkout on increased volume



ZRAN symm. tri. / buy on upside brkout on increased volume



chartpatterns.com

Chart Pattern Analysis for Timing the Markets

KMatras@aol.com