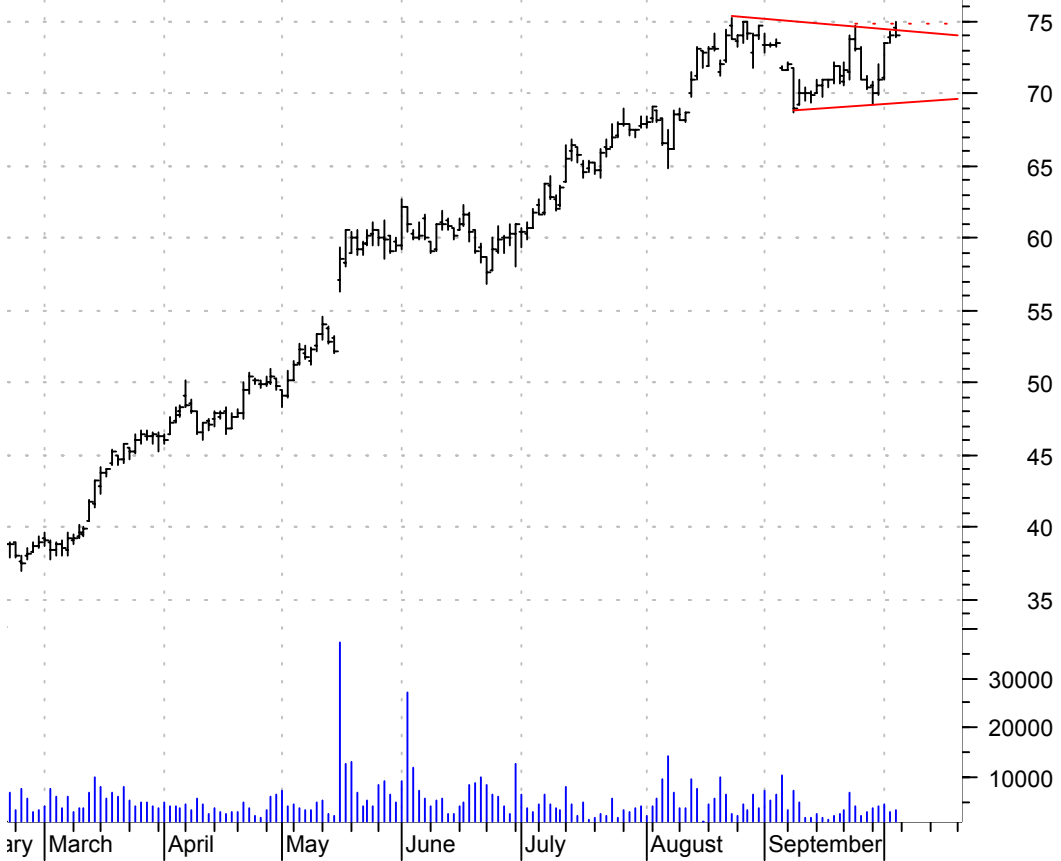


AAP symm. tri. / buy on upside breakout thru dotted red line on increased volume

ADVANCE AUTO PAR (74.6000, 74.9500, 73.9200, 74.0000 +0.0300)



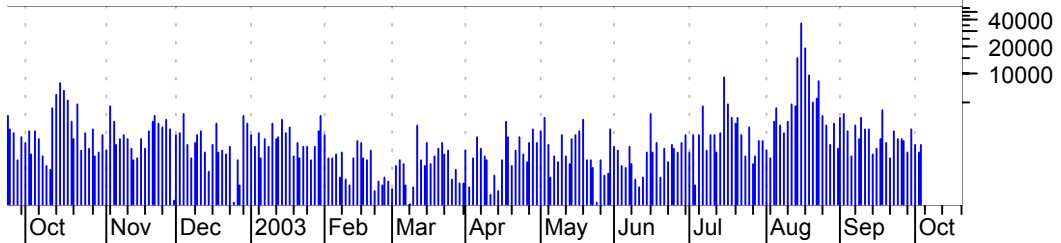
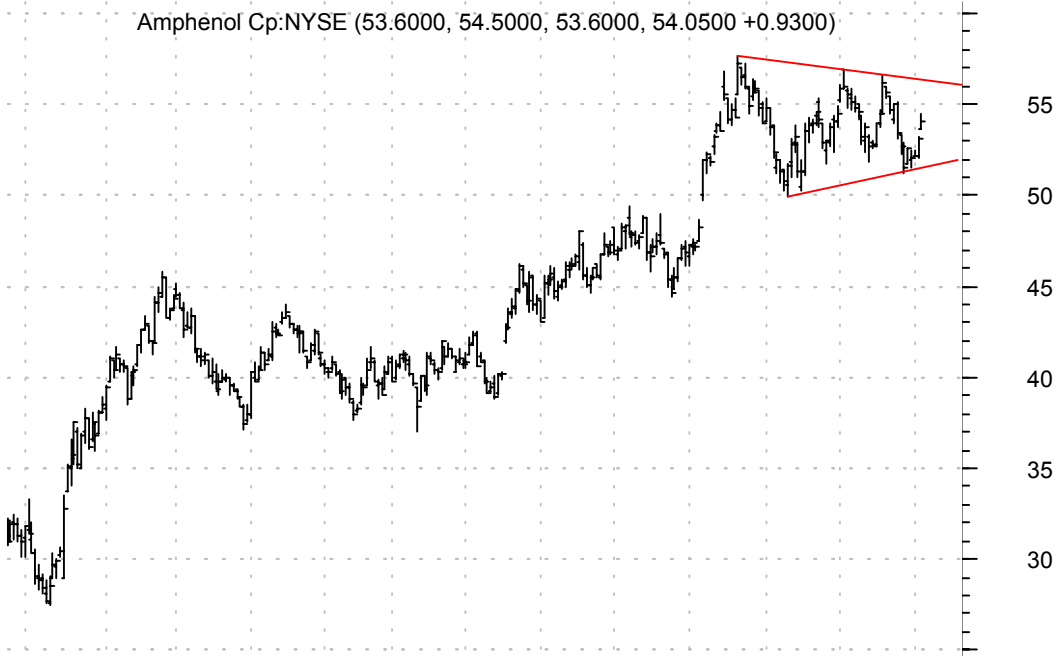
ADI bullish flagging / buy on upside breakout on decent volume

Analog Devices I (41.0000, 42.4800, 40.2100, 42.0000 +2.1700)



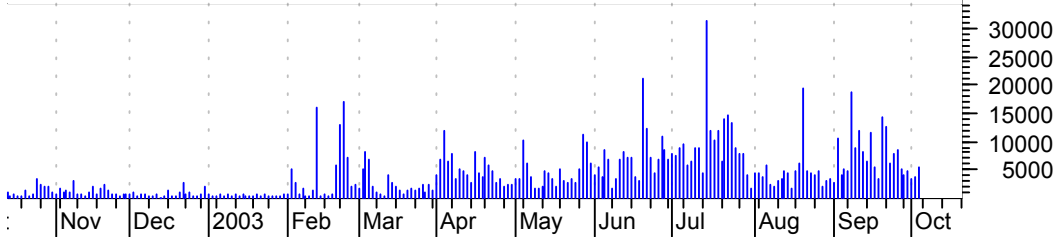
APH symm. tri. / buy on upside brkout on increased volume

Amphénol Cp:NYSE (53.6000, 54.5000, 53.6000, 54.0500 +0.9300)



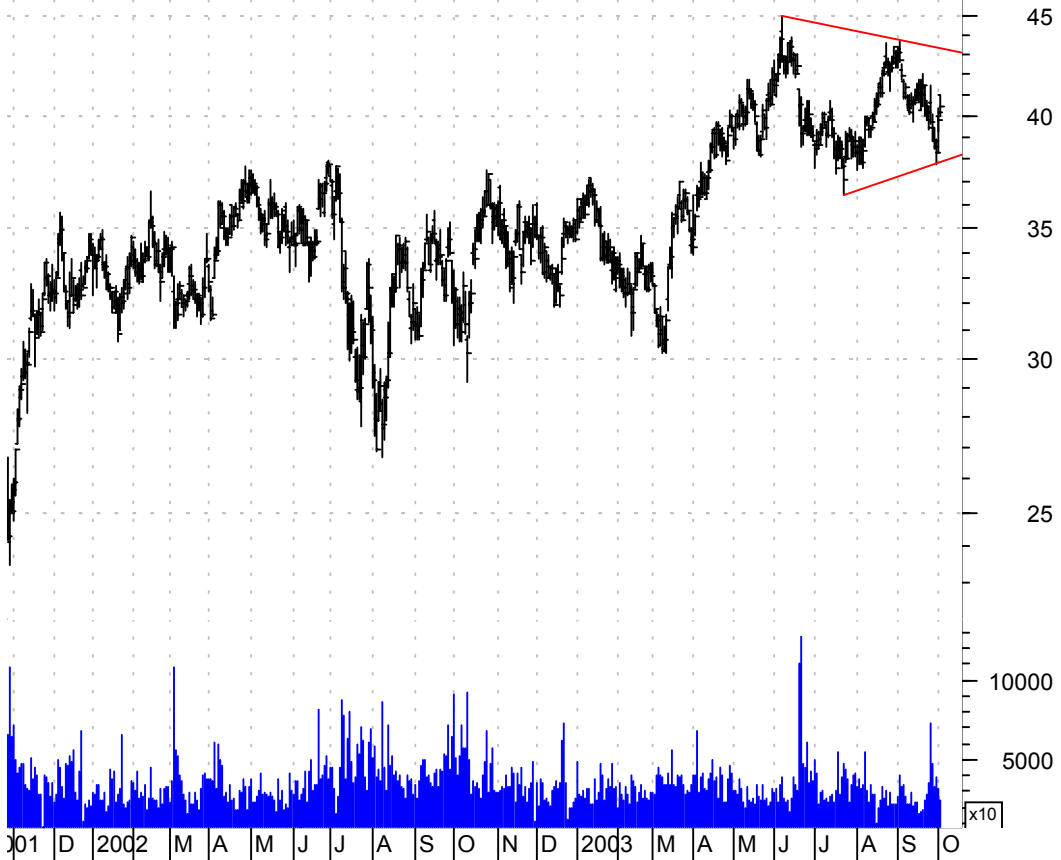
AQNT symm. tri. / buy on upside brkout on increased volume

aQuantive Inc:OT (9.6000, 10.0200, 9.5800, 9.8800 +0.4800)



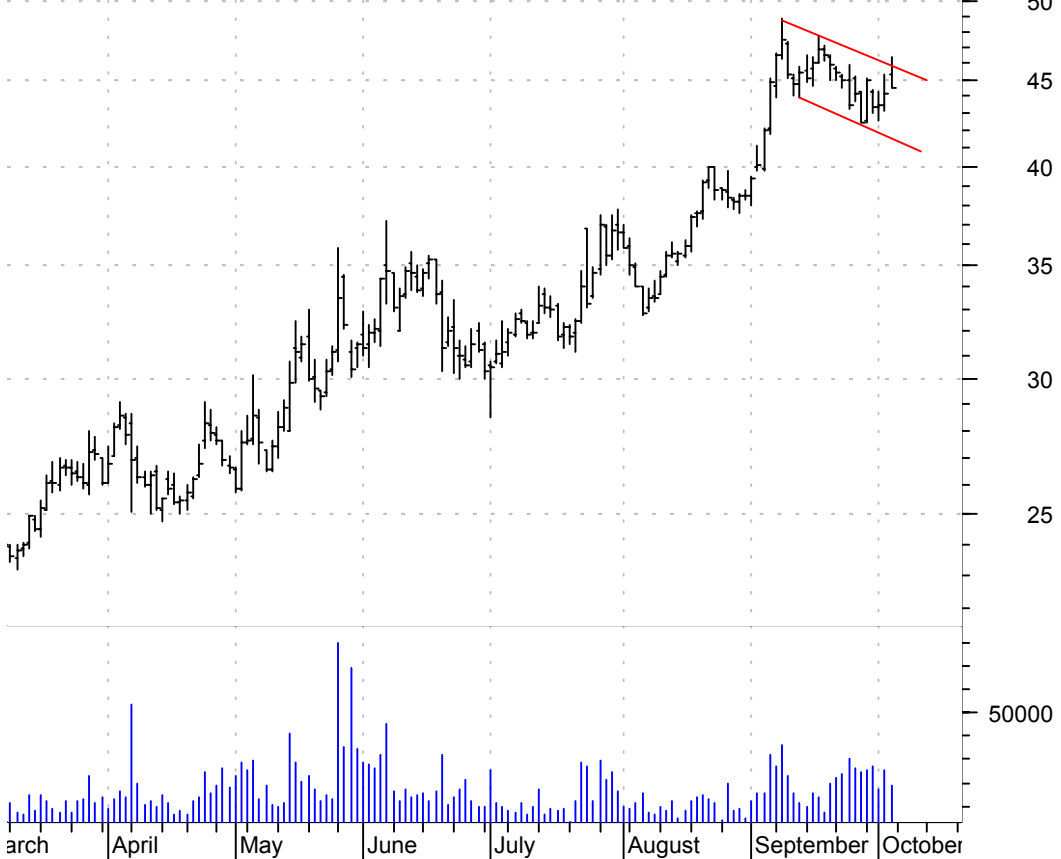
BBBY symm. tri. / buy on upside brkout on increased volume

Bed Bath & Beyo (41.0000, 41.0000, 39.9800, 40.4600 +0.6900)



CELG bull flag / buy on upside brkout on increased volume

Celgene:OTC (45.3500, 46.4100, 44.5000, 44.5400 +0.4000)



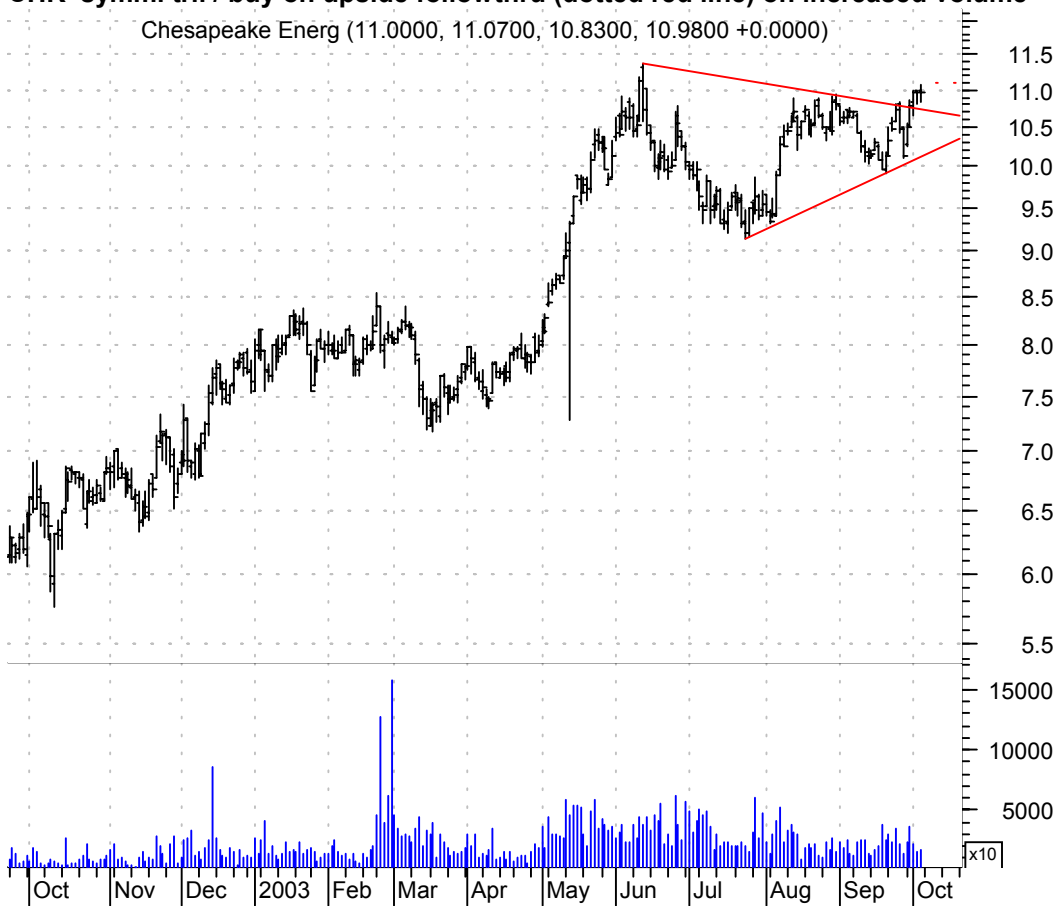
CHB bullish flag / buy on upside brkout on increased volume

Champion Enterpr (7.2500, 7.2800, 6.8500, 6.9300 -0.0700)



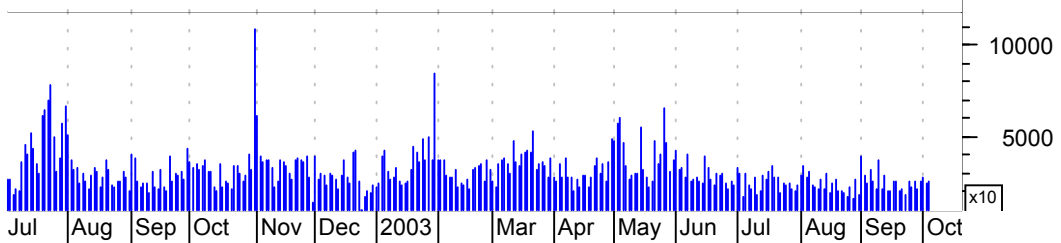
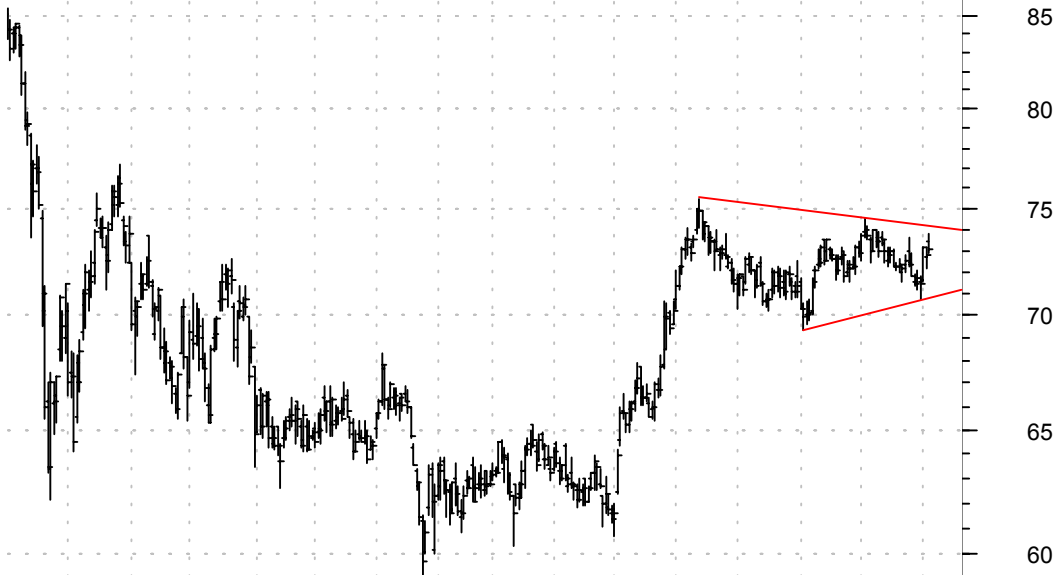
CHK symm. tri. / buy on upside followthru (dotted red line) on increased volume

Chesapeake Energ (11.0000, 11.0700, 10.8300, 10.9800 +0.0000)



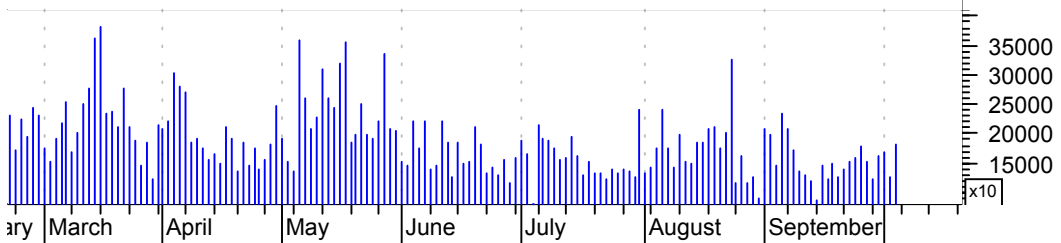
CVX symm. tri. / buy on upside brkout on increased volume

ChevronTexaco Cp (73.4000, 73.7600, 72.9000, 73.0800 +0.2800)



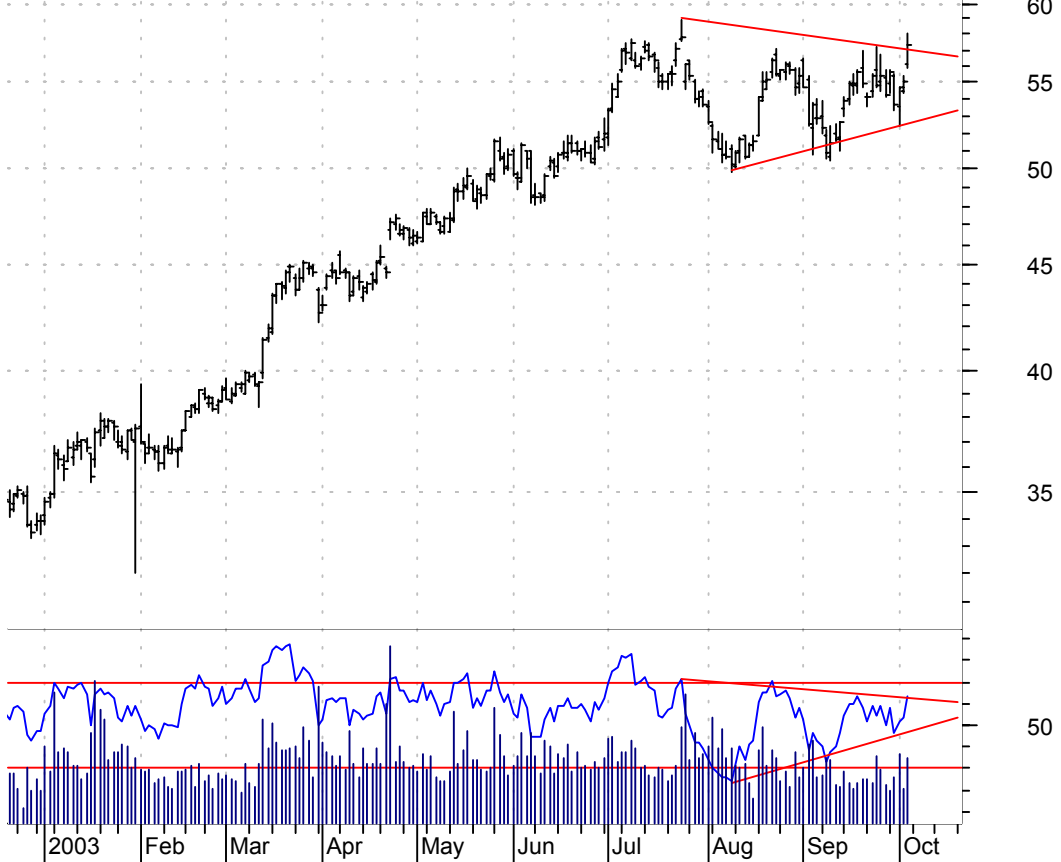
DELL asc. tri. / buy on upside brkout on increased volume

Dell Inc:OTC (34.4200, 34.9900, 34.3500, 34.9100 +1.0400)



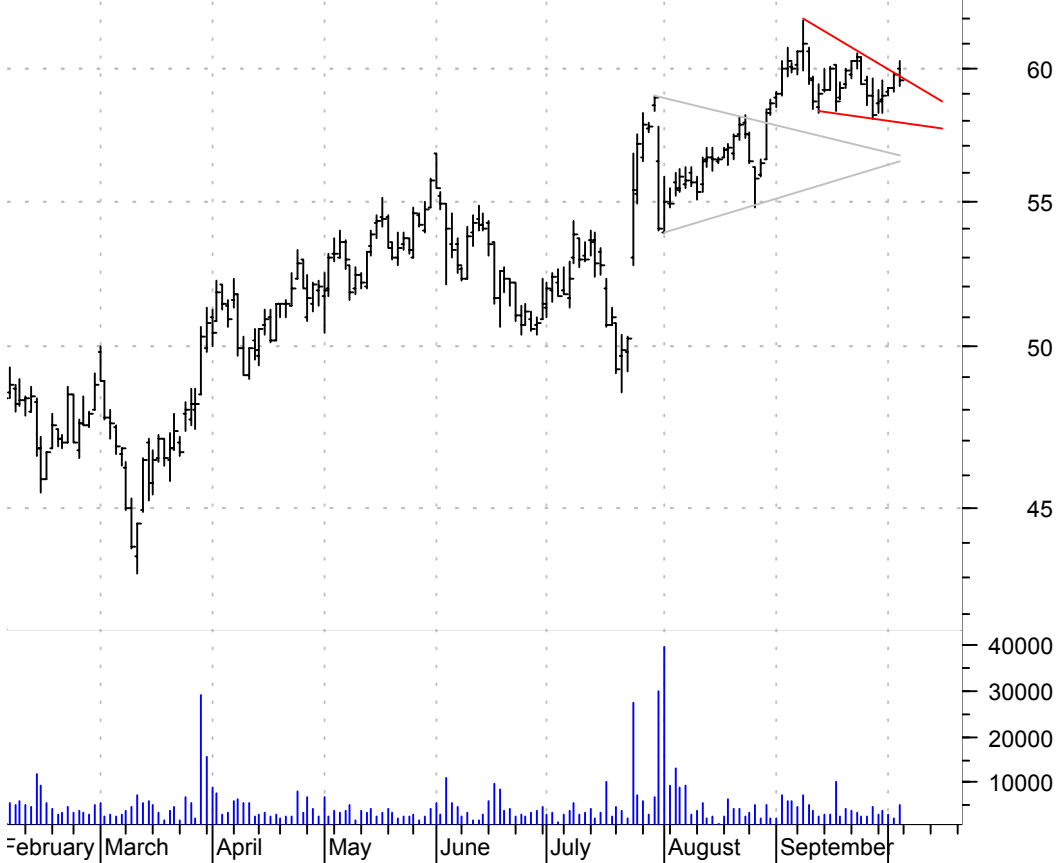
EBAY symm. tri. brkout (still close to orig. brkout area) / buy (watch for price and/or volume failures)

eBay Inc:OTC (56.0800, 58.1000, 55.8500, 57.3500 +2.2500)



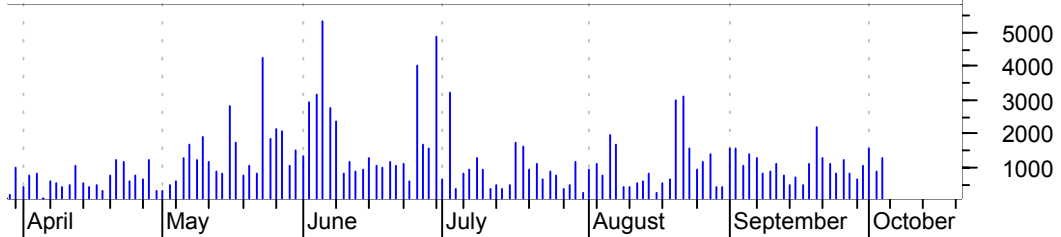
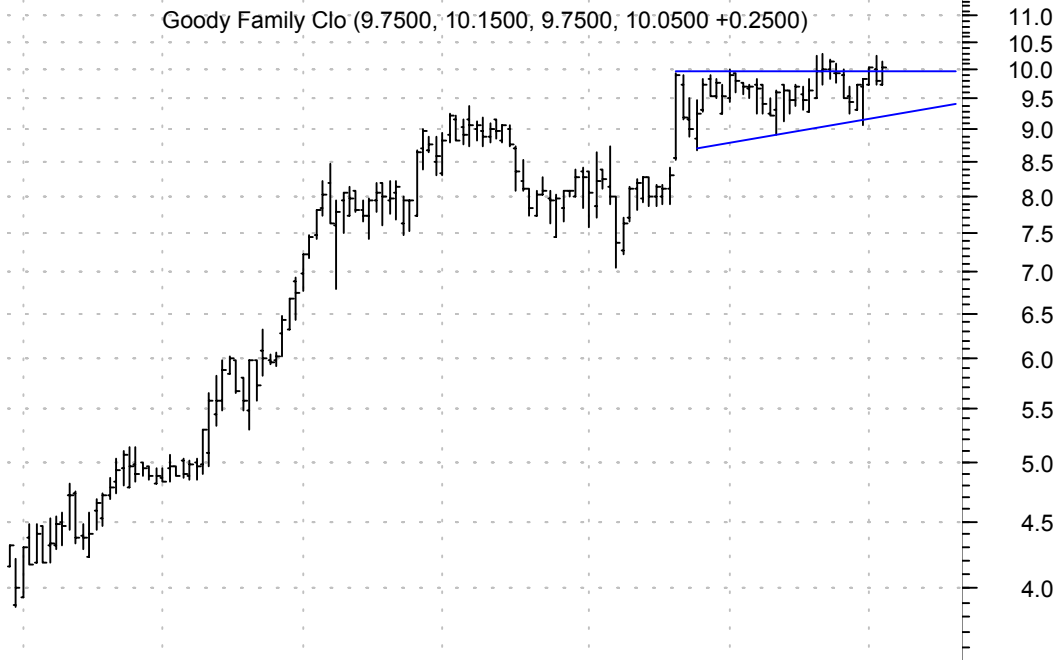
FIC falling wedge / buy on upside brkout on larger than normal volume

Fair Issac Inc:N (60.0000, 60.2600, 59.3000, 59.5400 -0.1900)



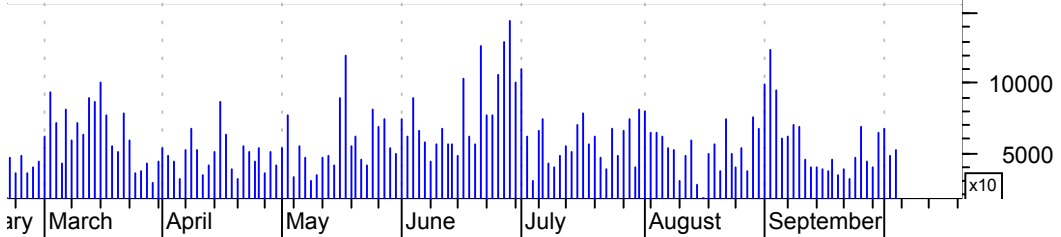
GDYS symm. tri. / buy and use bottom of pattern (asc. trendline) as failure point

Goody Family Clo (9.7500, 10.1500, 9.7500, 10.0500 +0.2500)



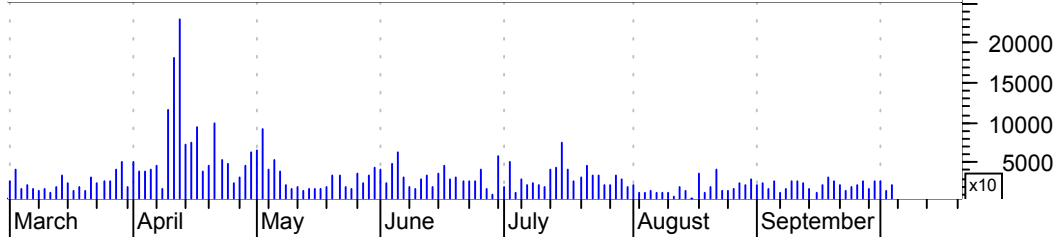
GM falling wedge / buy on upside breakout on increased volume

General Motors:N (41.4000, 41.8400, 41.2500, 41.4400 +0.6200)



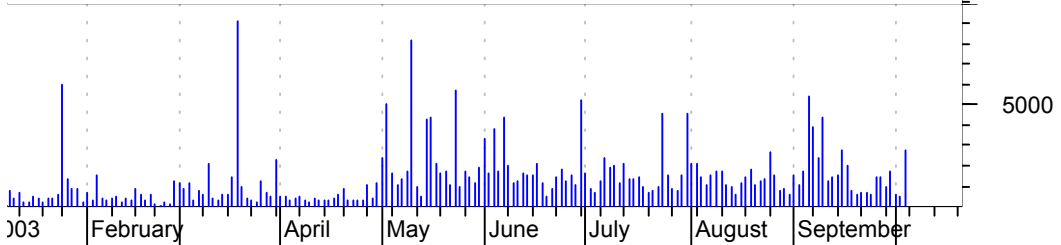
GMH symm. tri. / buy on upside brkout on increased volume

General Motors C (14.4200, 14.7400, 14.4000, 14.5800 +0.2300)



GSIC falling wedge / buy on upside brkout on increased volume

GSI Commerce Inc (10.1200, 11.0000, 10.0200, 10.5000 +0.1300)



HYSL symm. tri. / buy on upside brkout on larger than normal volume

Hyperion Solutio (31.9700, 32.7500, 31.8700, 32.0500 +0.7800)



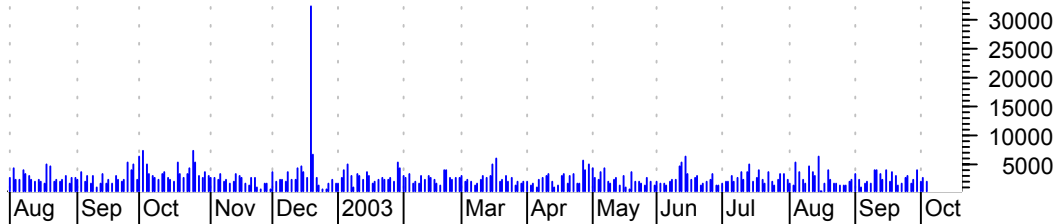
LU symm. tri. / buy on upside brkout on increased volume

Lucent Technolog (2.2000, 2.2600, 2.1900, 2.2200 +0.0600)



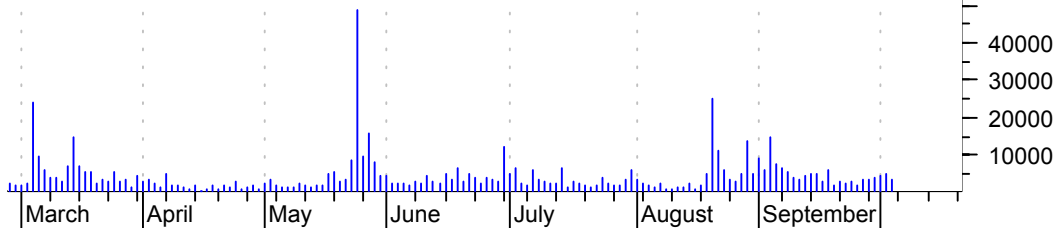
PDS symm. tri. / buy on upside breakout on increased volume

Precision Drilli (39.5000, 39.9800, 39.2700, 39.6700 +0.1700)



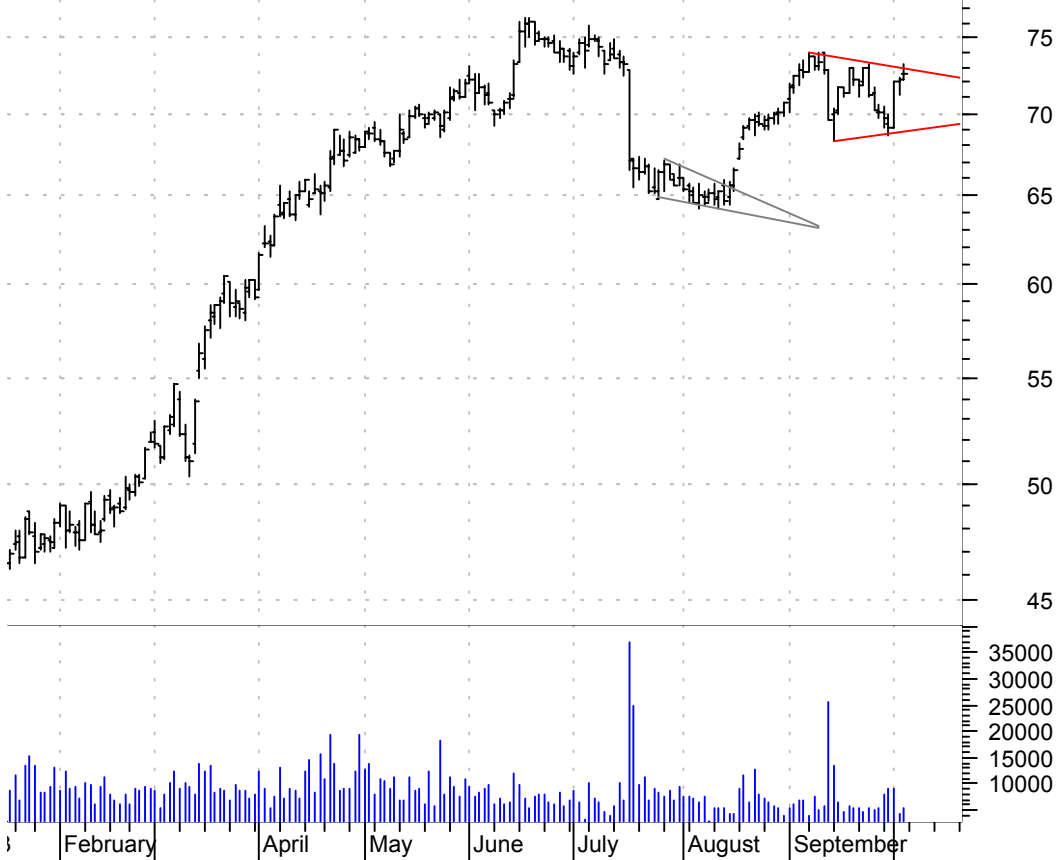
PETC symm. tri. / buy on upside breakout thru dotted red line on increased volume

PETCO ANIMAL SUP (32.9200, 33.3000, 32.1800, 32.7000 +0.1100)



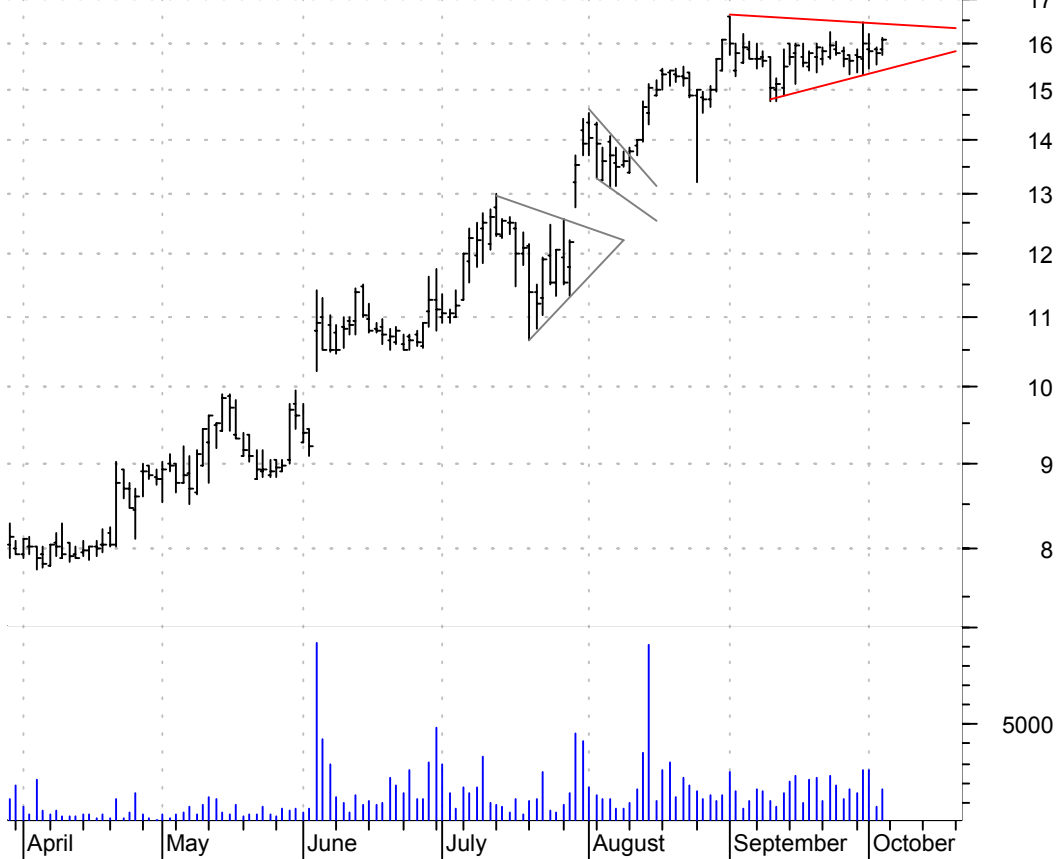
PGR symm. tri. / buy on upside brkout on increased volume

Progressive Corp (72.5200, 73.2700, 72.2500, 72.6200 +0.4200)



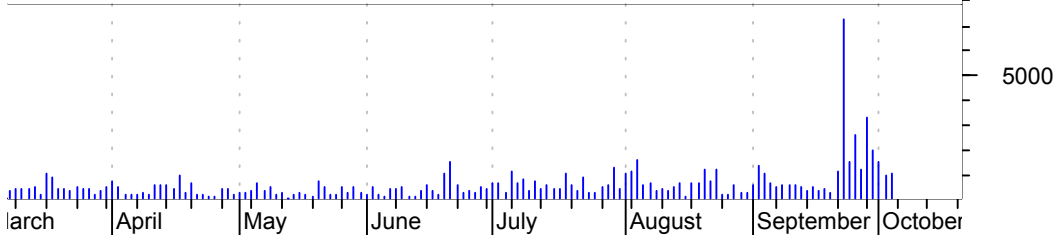
PSTI symm. tri. / buy on upside brkout on increased volume

Per-se Tech Inc: (15.8700, 16.0900, 15.7100, 16.0500 +0.2700)



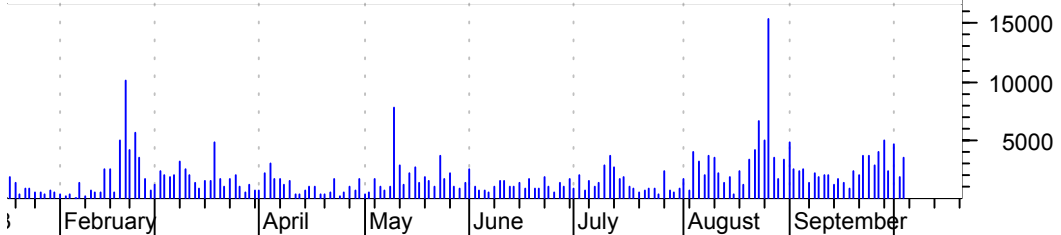
TRK sloppy bull flag / buy on upside brkout thru dotted red line on increased volume

Speedway Motorsp (30.0100, 30.2000, 29.4500, 30.1500 +0.2500)



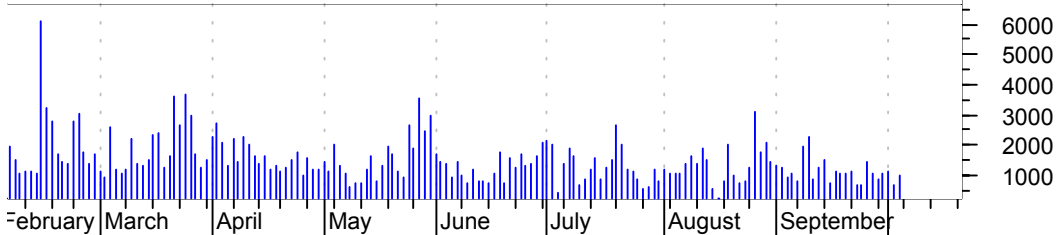
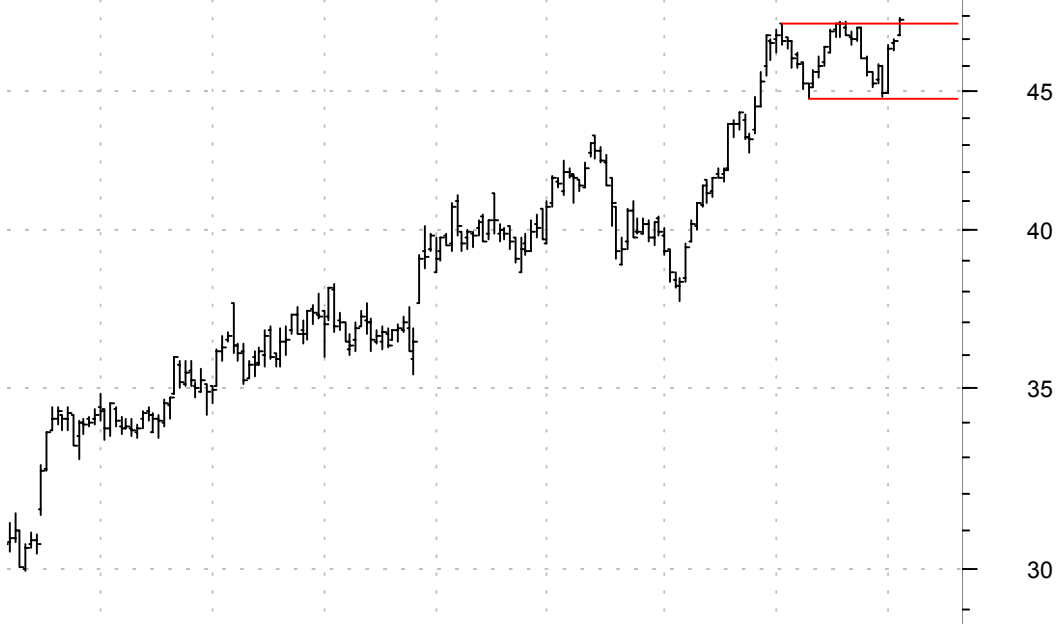
TSA sloppy asc. tri. brkout / buy and use the bottom of pattern (asc. trendline) as a failure point

Sports Authority (32.8900, 34.6300, 32.8900, 33.9000 +1.2600)



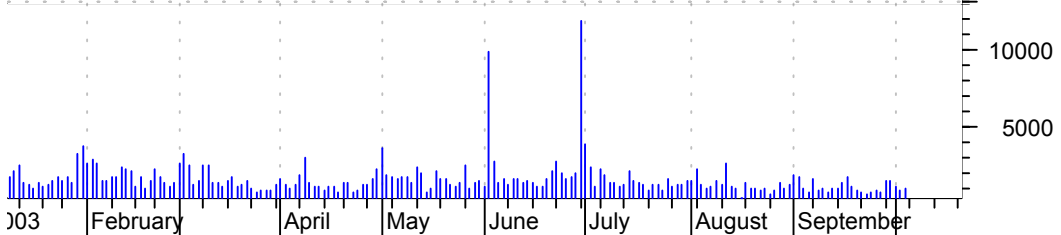
TTC rectangle brkout / buy on upside continuation on larger than normal volume

Toro Co:NYSE (47.2000, 47.8900, 47.2000, 47.8300 +0.8900)



WGL slight (& sloppy) asc. tri. / buy on upside brkout on increased volume

WGL Holdings Inc (27.7400, 27.9200, 27.6500, 27.8400 +0.1900)



ZBRA symm. tri. / buy on upside brkout on larger than normal volume

Zebra Technologi (53.1000, 55.7100, 53.1000, 54.8500 +1.7800)



ZIGO falling wedge preceded by 'pole-like' move / buy on upside brkout on larger than normal volume

Zygo Cp:OTC (17.1100, 17.1100, 16.0800, 16.3900 -0.1500)



chartpatterns.com
Chart Pattern Analysis for Timing the Markets

KMatras@aol.com