

**AMCC bullish flagging / buy on upside brkout on increased volume**

Applied Micro Ci (5.8200, 5.9200, 5.7600, 5.8200 +0.0200)



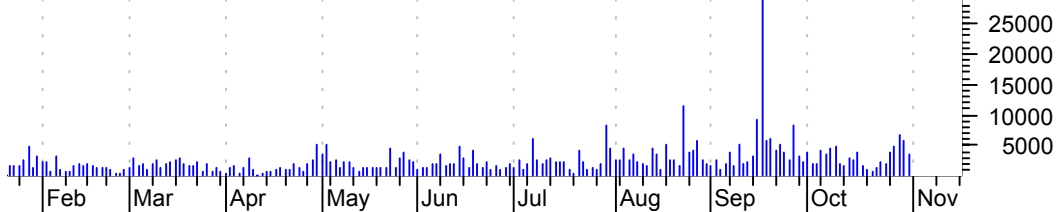
**ANDW symm. tri. / buy on upside brkout on decent volume**

Andrew Corp:OTC (12.0500, 13.7200, 11.9500, 13.1800 +0.4100)



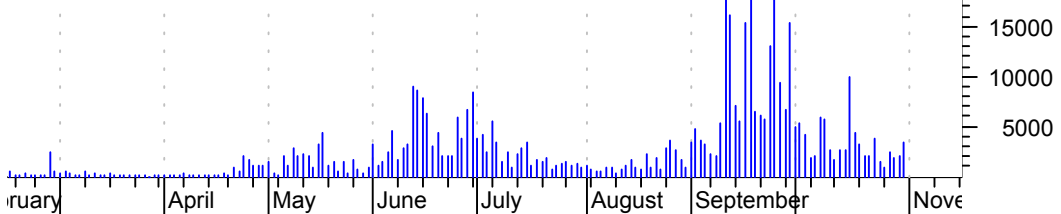
**ANT symm. tri / buy on upside brkout thru dotted red line on increased volume**

ANTEON INTL CP:N (34.3000, 34.4000, 33.8000, 34.1400 -0.0400)



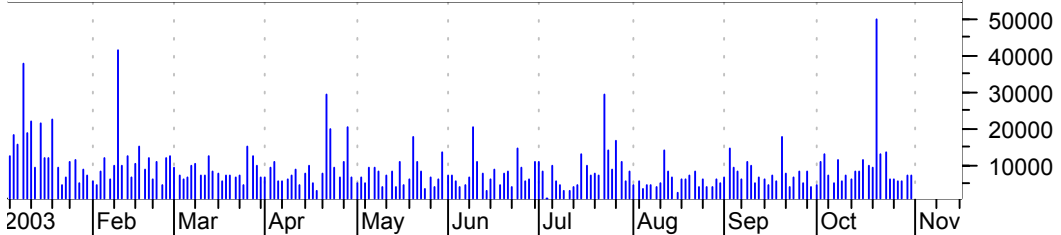
**AXYX symm. tri. / buy on upside brkout on increased volume**

Axonix Inc:OTC (4.7300, 4.8200, 4.5600, 4.8000 +0.0100)



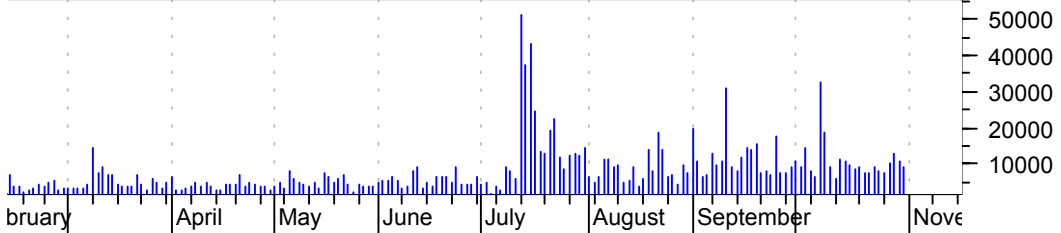
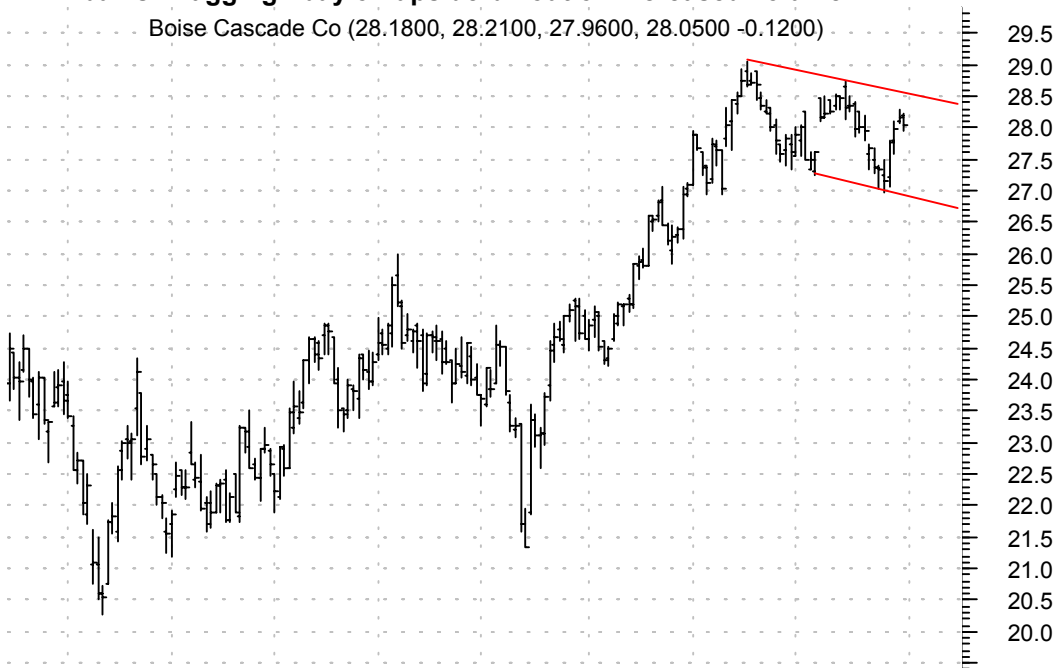
**BBI bear pennant / sell on downside brkout on increased volume**

Blockbuster Inc: (19.3500, 19.5200, 19.2500, 19.2700 -0.0500)



**BCC bullish flagging / buy on upside brkout on increased volume**

Boise Cascade Co (28.1800, 28.2100, 27.9600, 28.0500 -0.1200)



**CRAY symm. tri. / buy on upside breakout on increased volume**

Cray Inc:OTC (12.9200, 13.1300, 12.7300, 13.1000 +0.3000)



**CVX symm. tri. / buy on upside breakout on larger than normal volume**

ChevronTexaco Cp (73.0000, 74.9800, 72.8600, 74.3000 +2.5400)



**DGII rising wedge / sell on downside brkout on increased volume**

Digi Intl Inc:OT (9.4500, 9.4500, 9.1500, 9.3000 -0.1400)



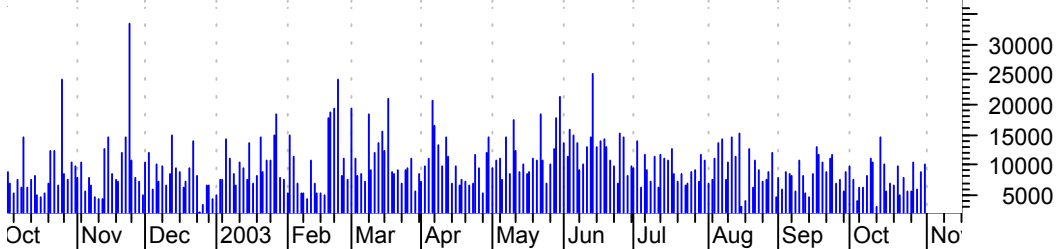
**DGX bull pennant / buy on upside brkout on increased volume**

Quest Diagnostic (67.7000, 68.2500, 66.8700, 67.6500 +0.0200)



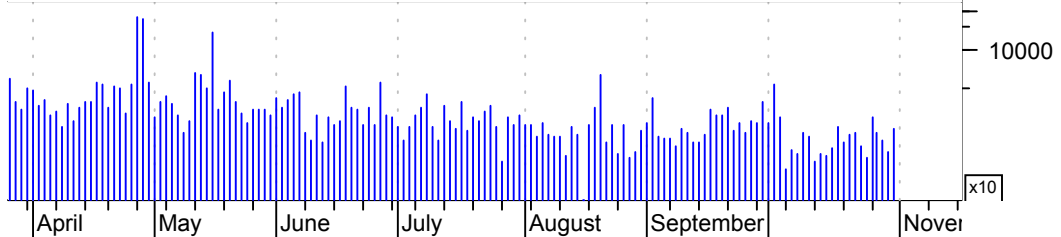
**EOG asc. tri. / buy on upside breakout on increased volume**

EOG Resources:NY (41.1000, 42.4400, 40.8500, 42.1400 +0.9400)



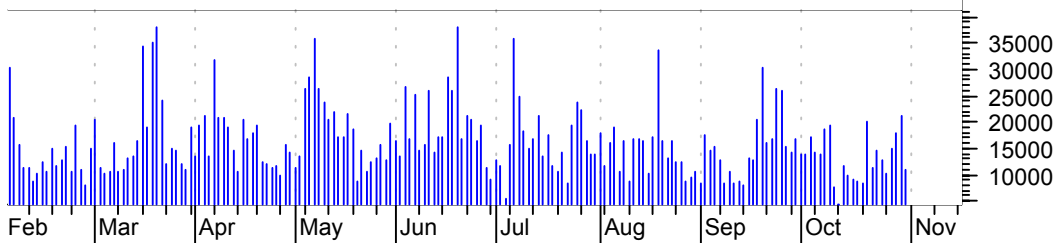
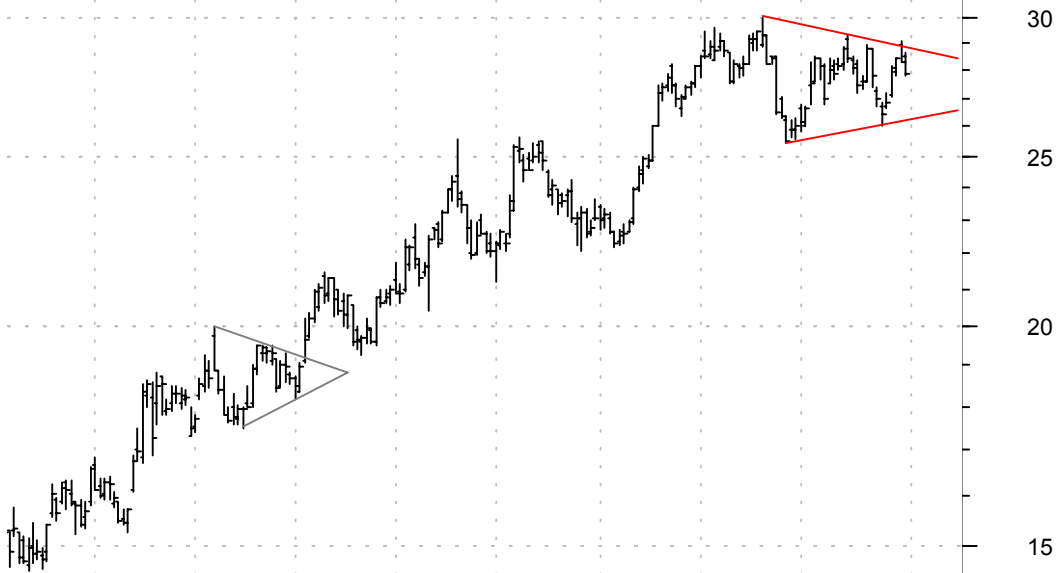
**INTU falling wedge / buy on upside breakout on increased volume**

Intuit Inc:OTC (49.3600, 50.1000, 49.0400, 50.1000 +1.5300)



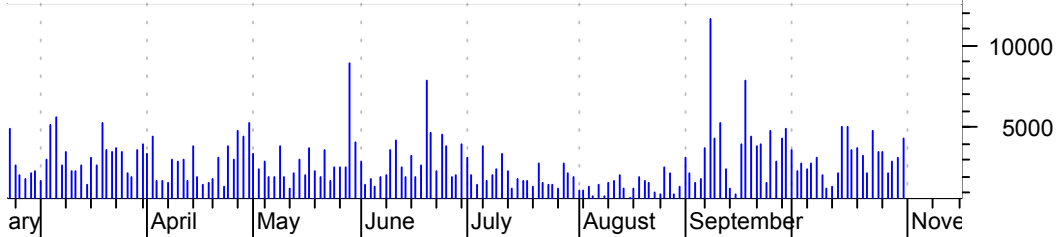
**JBL symm. tri. / buy on upside breakout on increased volume**

Jabil Circuit In (28.5400, 28.6400, 27.8200, 27.8500 -0.4500)



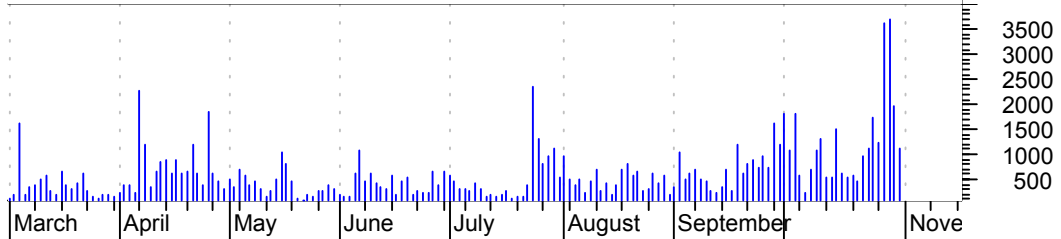
**KIM symm. tri. / buy on upside breakout on decent volume**

Kimco Realty Cor (41.6500, 41.8800, 41.1700, 41.6600 +0.0100)



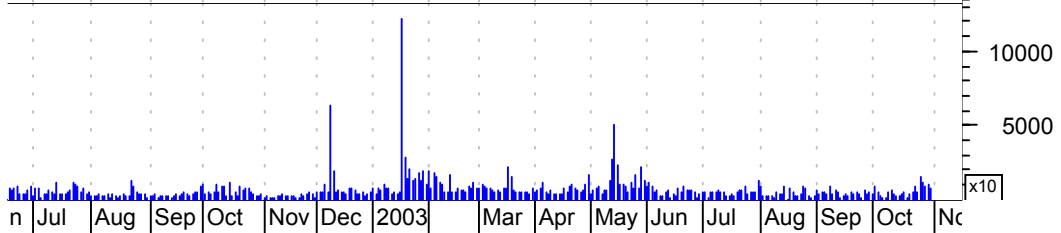
**LAD rectangle / buy on upside breakout on larger than normal volume**

Lithia Motors In (23.4700, 24.9000, 23.3100, 23.6200 +0.4000)



**MWI bullish flag / buy on upside breakout on increased volume**

Moore Wallace In (14.2000, 14.3000, 14.0500, 14.3000 +0.0500)





**PETC asc. tri. / buy on upside brkout on increased volume**

PETCO ANIMAL SUP (33.5600, 34.1700, 32.9500, 33.1900 -0.2300)



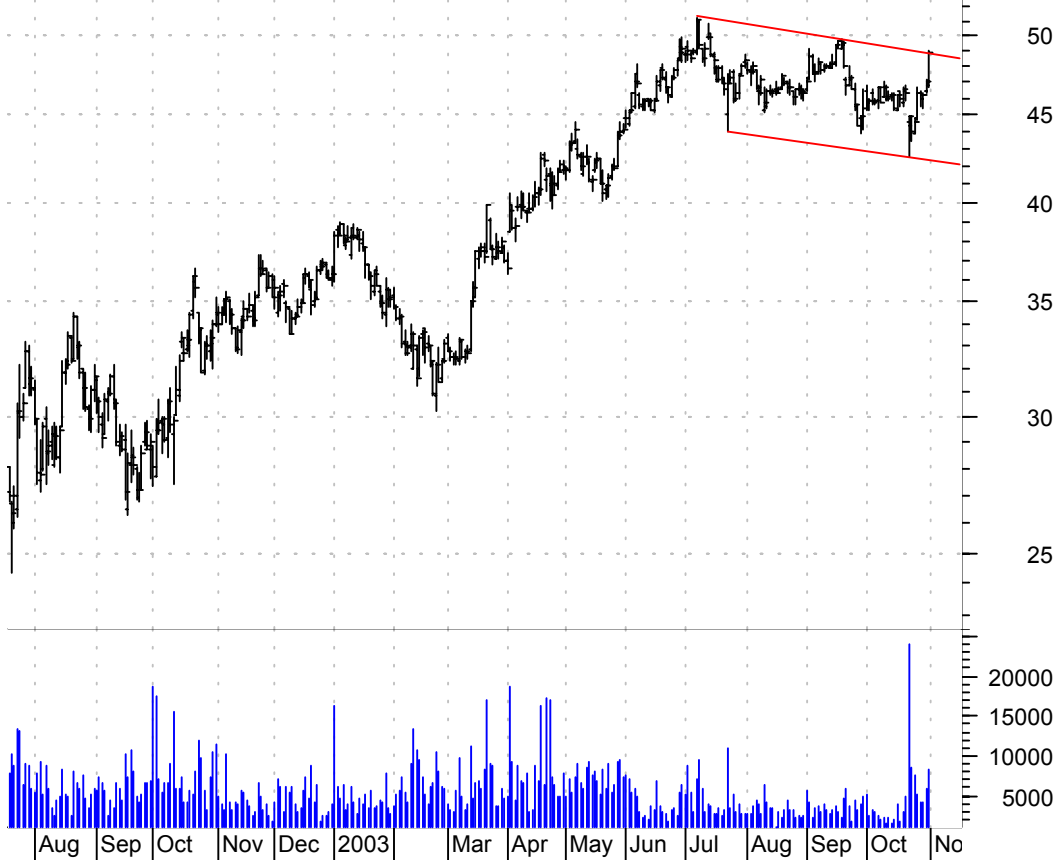
**PETM asc. tri. / buy on upside brkout on increased volume**

Petsmart Inc:OTC (26.0900, 26.2000, 25.6000, 25.6100 -0.3400)



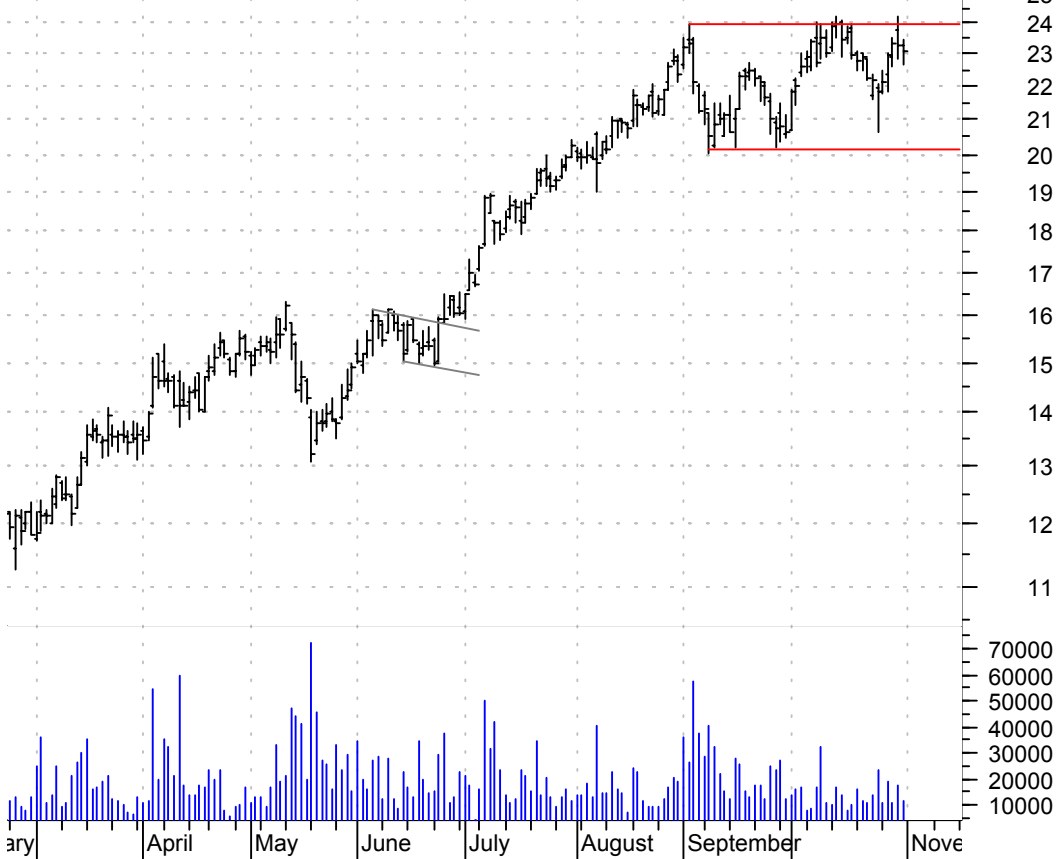
**PFCB bullish flagging / buy on upside breakout on larger than normal volume**

P.f. Chang's Chi (46.8000, 49.0000, 46.7000, 48.8400 +1.8400)



**PSUN less than perfect 'rectangle-like' pattern / buy on upside breakout on increased volume**

Pacific Sunwear (23.3000, 23.4700, 22.6500, 23.0800 -0.2200)



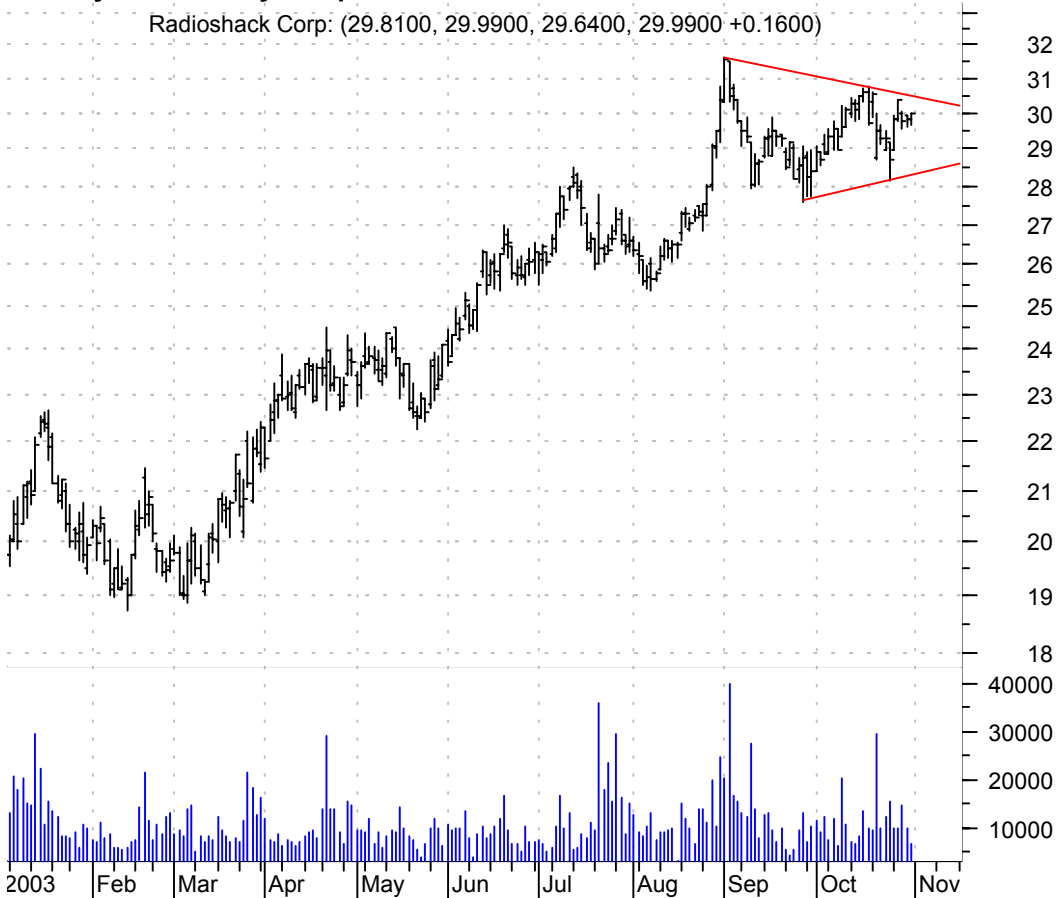
**QLTI h. & sh. / sell on downside brkout on increased volume**

Qlt Inc:OTC (15.9100, 15.9100, 15.4300, 15.4500 -0.2300)



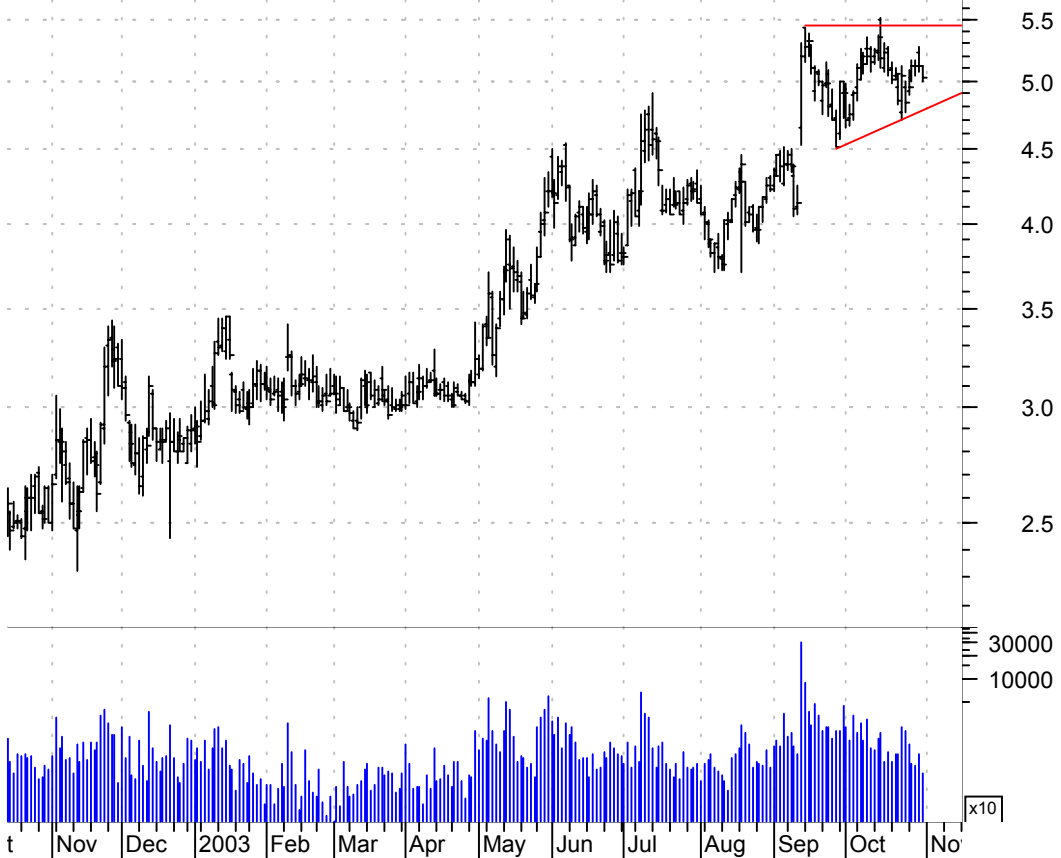
**RSH symm. tri. / buy on upside brkout on increased volume**

Radioshack Corp: (29.8100, 29.9900, 29.6400, 29.9900 +0.1600)



**SCMR sloppy asc. tri. / buy on upside brkout on increased volume**

Sycamore Network (5.1200, 5.1200, 4.9900, 5.0300 -0.0900)



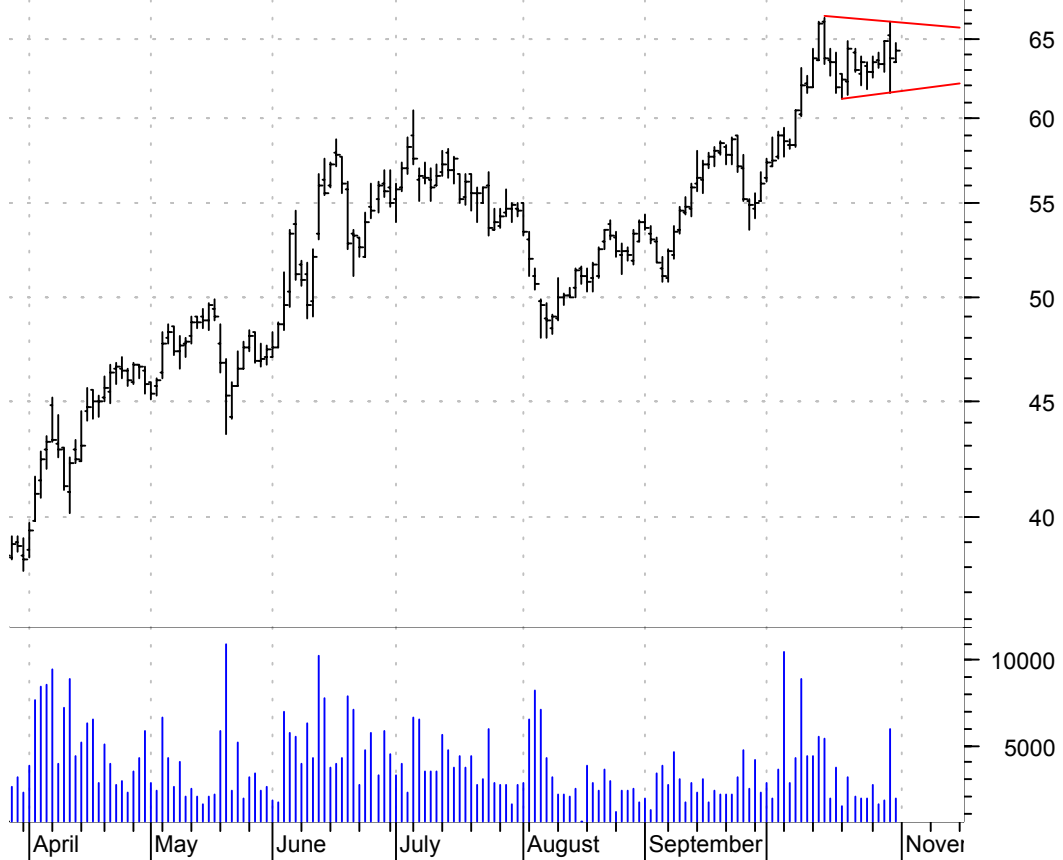
**SVC symm. tri. / buy on upside brkout on increased volume**

Stewart & Steven (16.4500, 16.8200, 16.4500, 16.7200 +0.1400)



**TARO symm. tri. preceded by 'pole-like' move / buy on upside brkout on larger than normal volume**

Taro Pharmaceuti (63.4700, 64.8300, 63.4700, 64.2600 +0.5400)

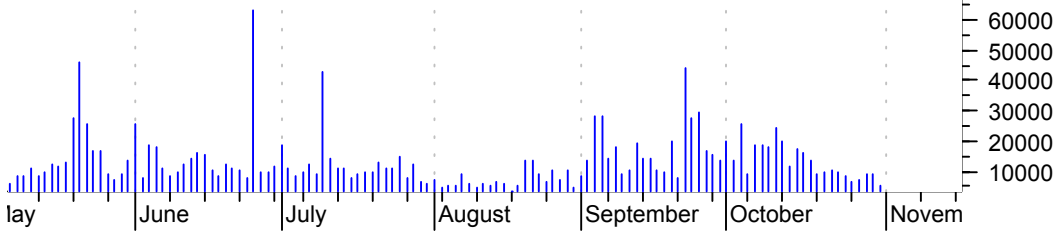


**TPTH symm. tri. / buy on upside brkout thru dotted red line on increased volume**

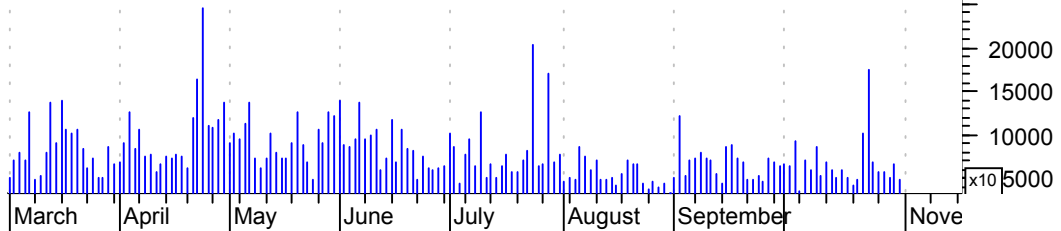
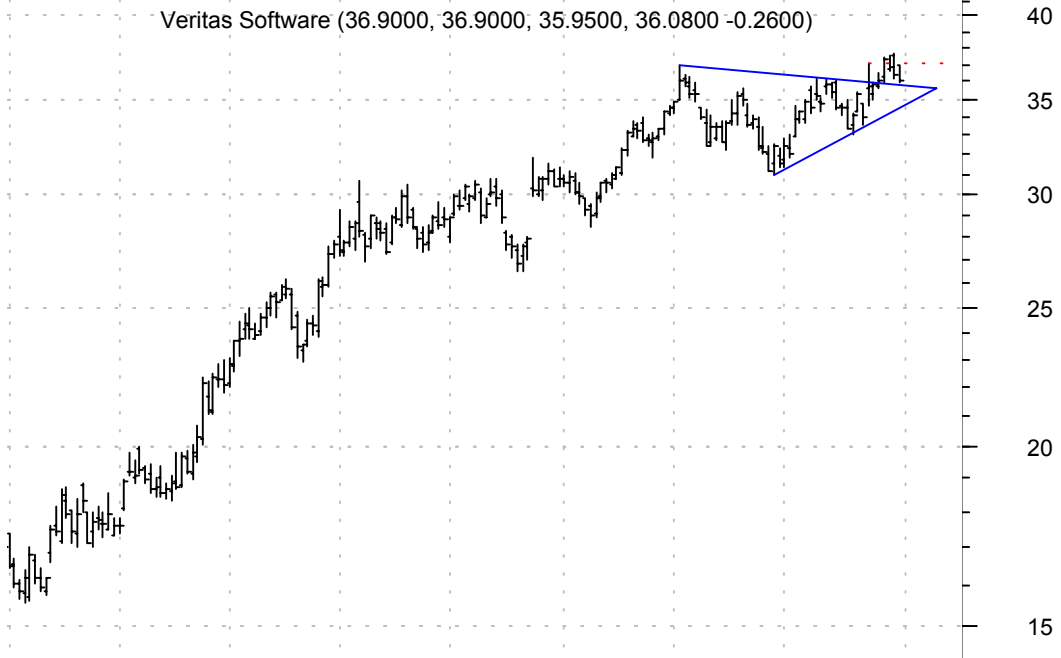
Tripath Imaging (9.2700, 9.5000, 9.1600, 9.4000 -0.0500)



**TSN asc. tri. / buy on upside brkout on increased volume**



**VRTS symm. tri. brkout & retracement / buy on upside brkout thru dotted red line on increased volume**



**WBSN falling wedge / buy on upside brkout on increased volume**

WEBSense INC:OTC (22.0300, 24.1600, 22.0300, 23.4000 +1.4800)



**chartpatterns.com**

Chart Pattern Analysis for Timing the Markets

[KMatras@aol.com](mailto:KMatras@aol.com)