

ACGL 'complicated' h. & sh. / sell on downside brkout on increased volume

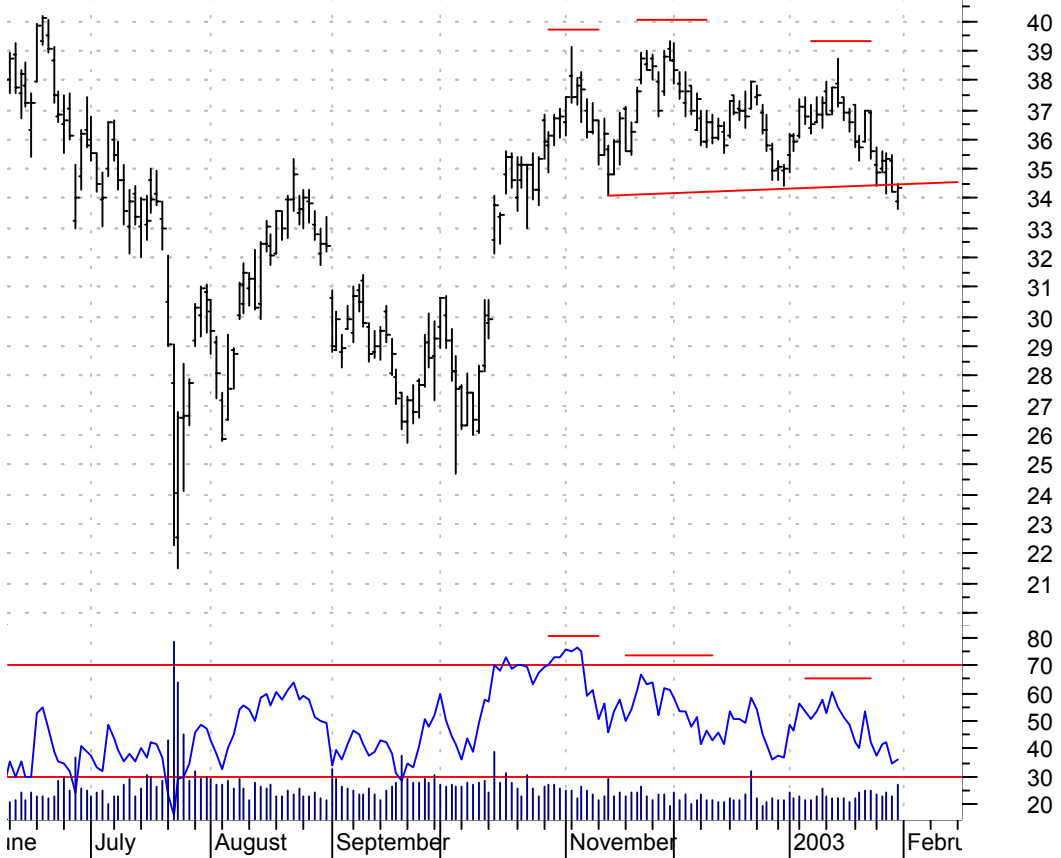


ALA symm. tri. preceded by 'pole-like' move / buy on upside brkout on increased volume



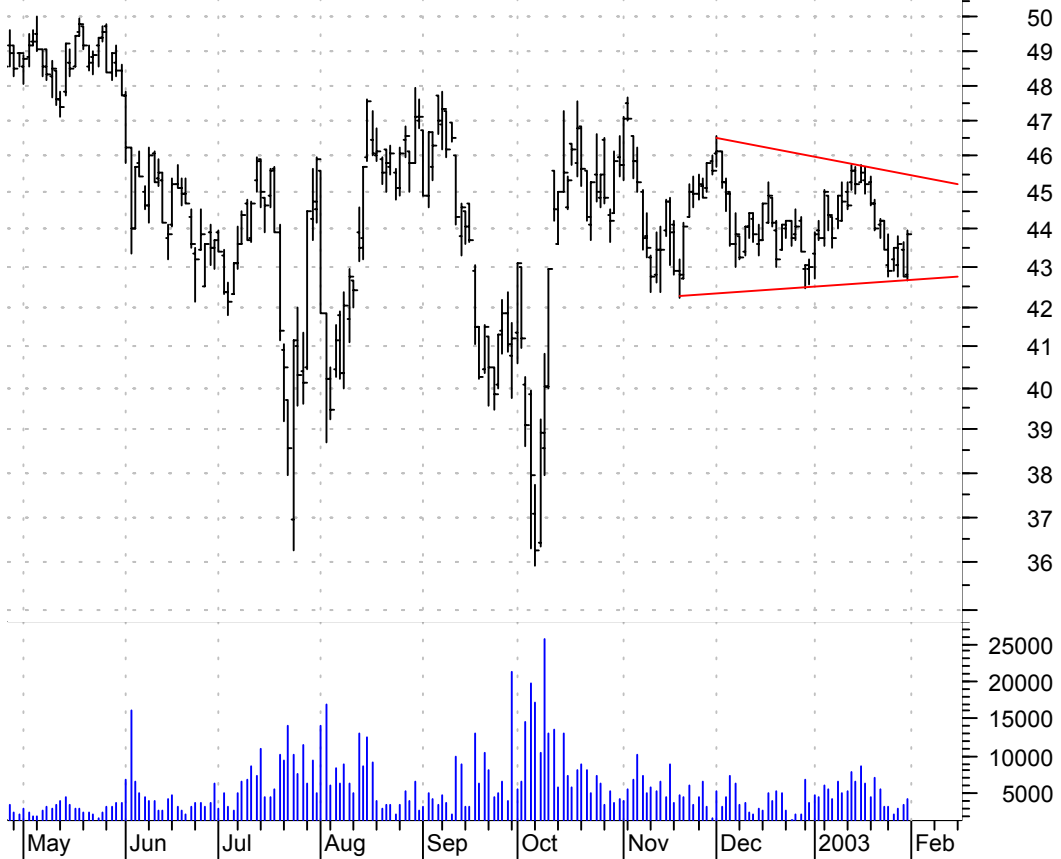
C h. & sh. brkout / sell and use a \$1 retracement above the neckline as a failure point

Citigroup Inc:NY (33.9000, 34.4800, 33.6500, 34.3500 +0.1500)



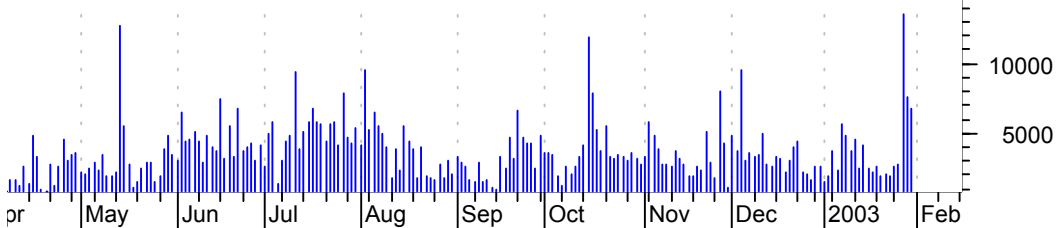
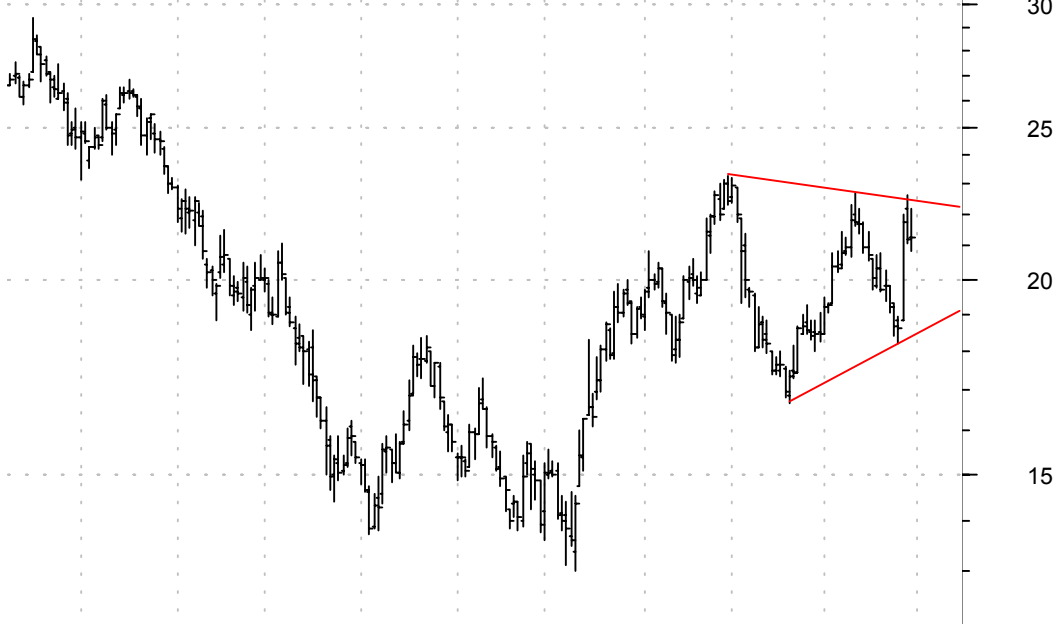
CBH symm. tri. / sell on downside brkout on increased volume

Commerce Bancorp (42.7900, 43.9800, 42.6600, 43.8900 +1.1100)



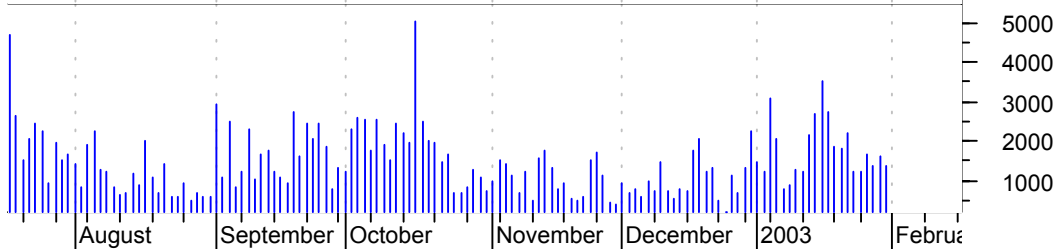
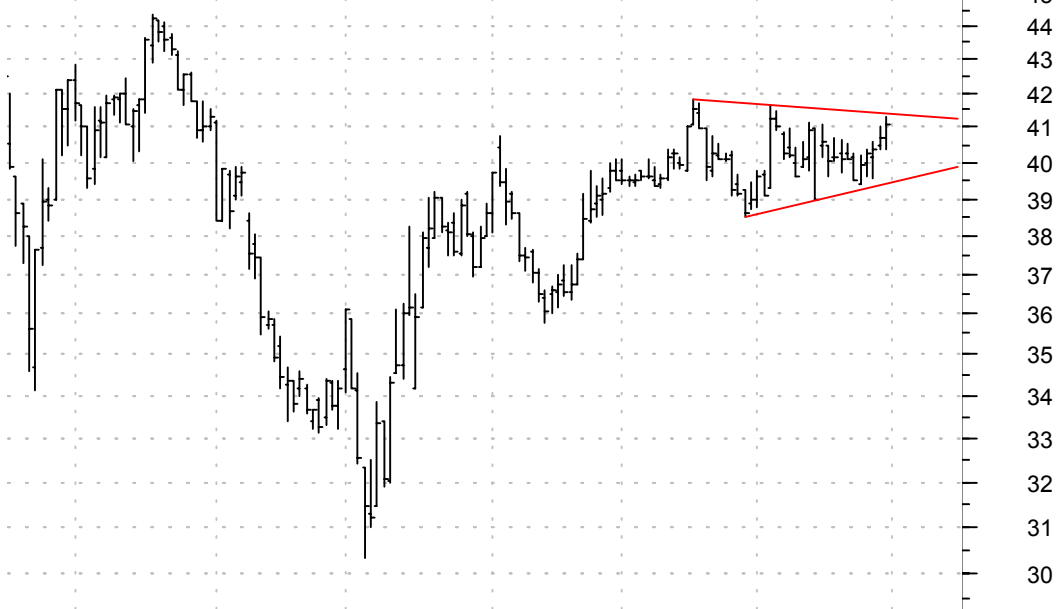
CGNX symm. tri. / buy on upside brkout on decent volume

Cognex Corp:OTC (21.2500, 22.2000, 20.8700, 21.2700 +0.0400)

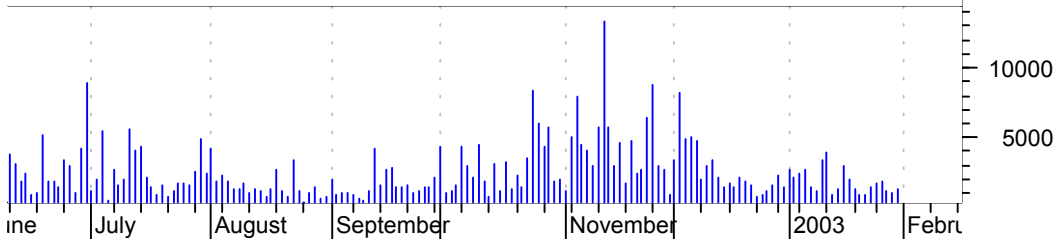


DSL symm. tri. / buy on upside brkout on increased volume

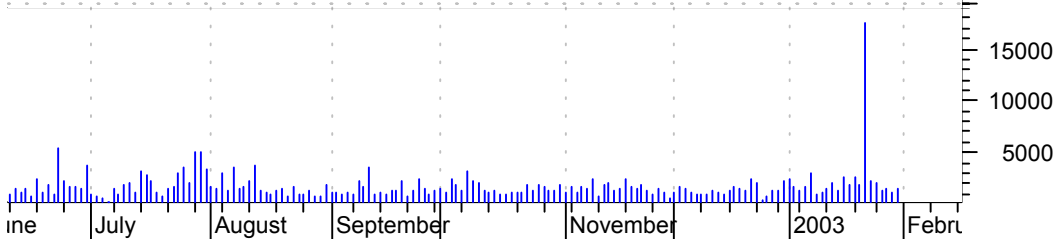
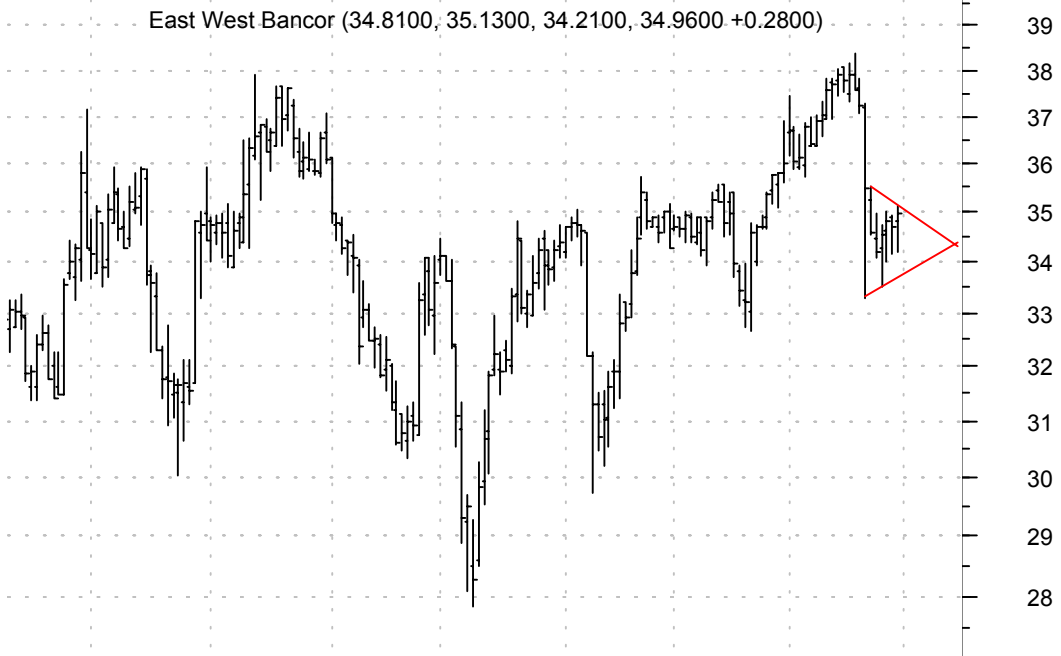
Downey Financial (40.7200, 41.2900, 40.3900, 41.1000 +0.3800)



ERES asc. tri. / buy on upside breakout on increased volume

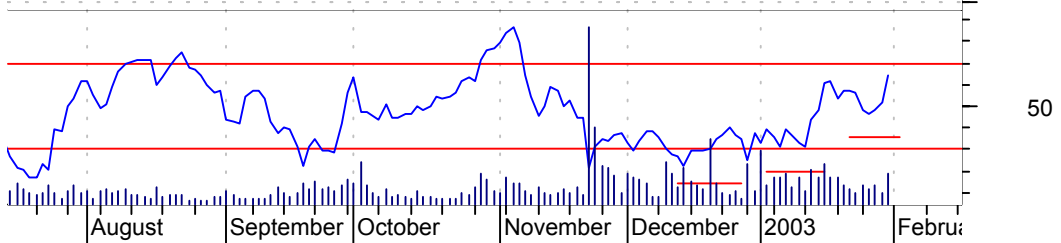


EWBC symm. tri. / sell on downside breakout on increased volume



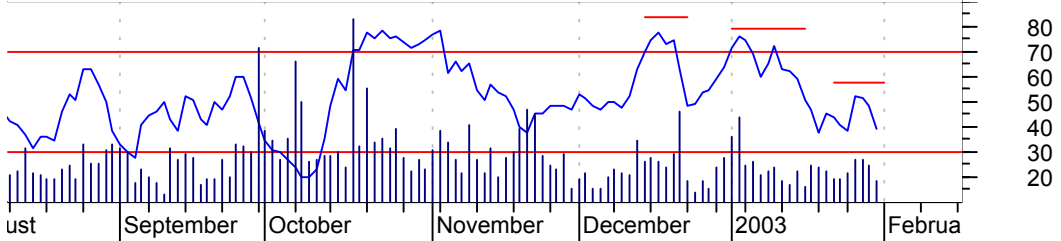
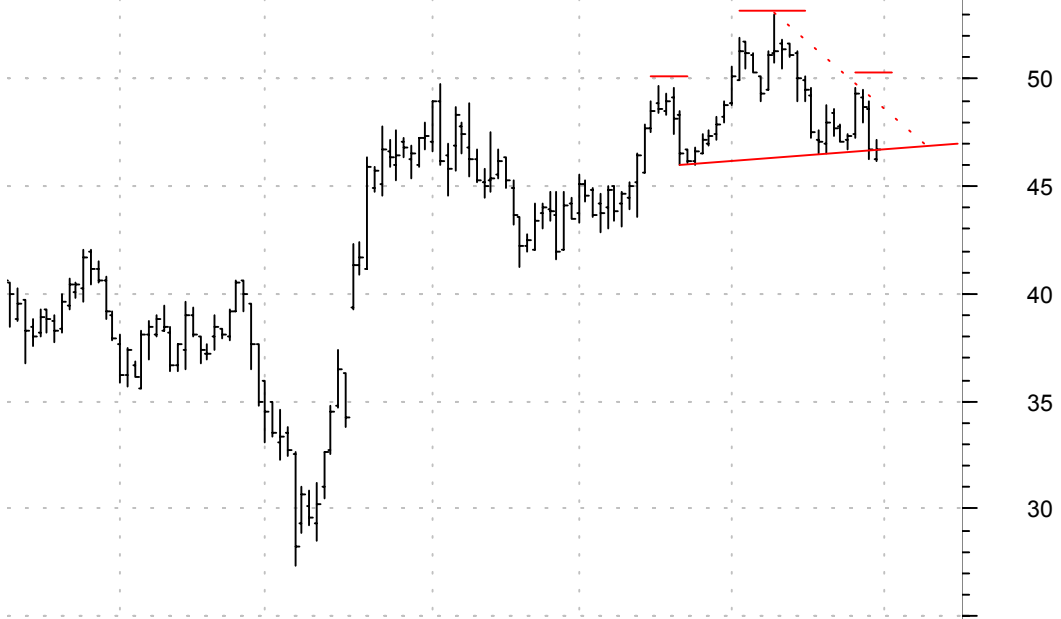
FDP inv. h. & sh. brkout / buy and use dotted red line as failure point

Fresh Del Monte (19.3500, 21.2000, 19.3500, 20.7000 +1.3300)



FLIR h. & sh. / sell on downside brkout on increased volume

Flir Systems:OTC (46.2500, 47.1900, 46.1800, 46.7200 +0.0200)



JBLU h. & sh. / sell on downside brkout on increased volume

JETBLUE AIRWAYS (28.7900, 28.8000, 27.9500, 28.3000 -0.6300)



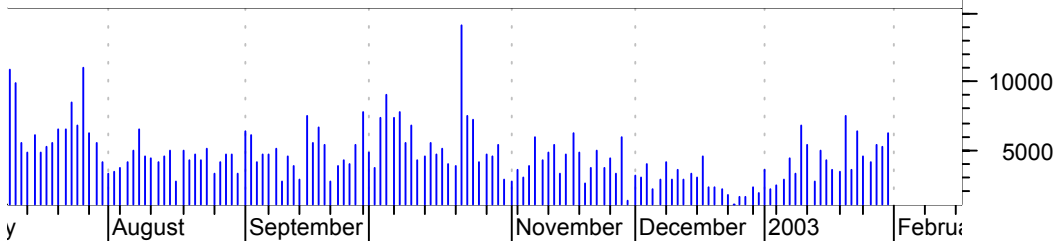
KANA symm. tri. / buy on upside brkout on increased volume

KANA SOFTWARE IN (3.4500, 3.5000, 3.3100, 3.3200 -0.1900)



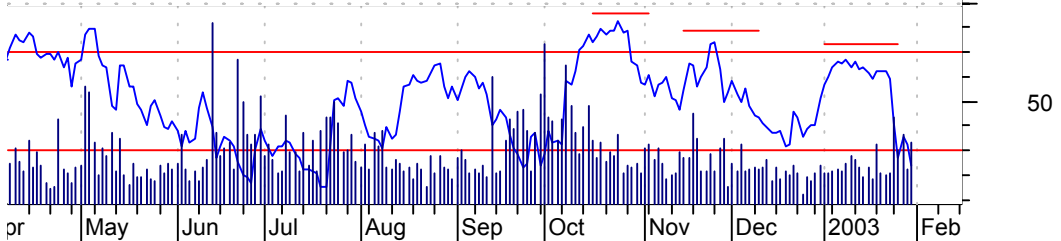
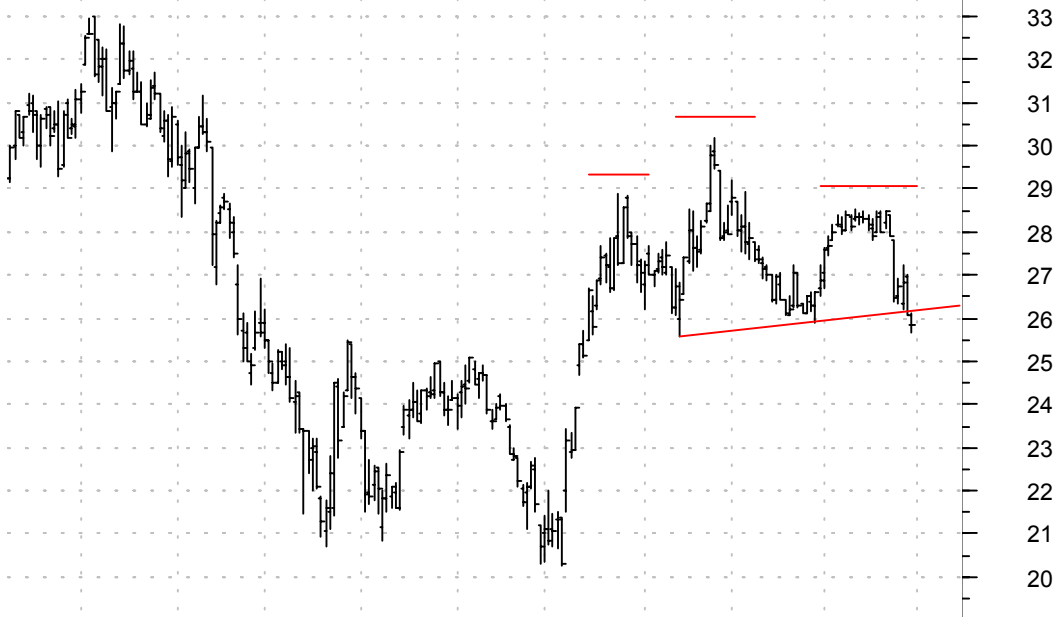
LM bear flag / sell on downside brkout on larger than normal volume

Legg Mason Inc:N (49.1000, 50.0600, 48.9500, 50.0400 +0.9900)



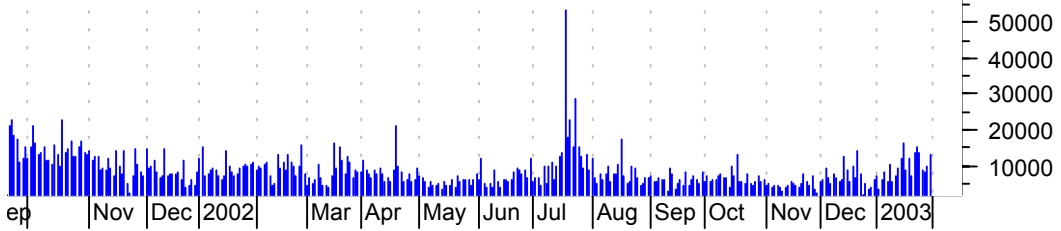
NDN h. & sh. brkout / sell and use a \$1 retracement above neckline as a failure point

Ninety Nine Only (25.8500, 26.1200, 25.6900, 25.8600 -0.2100)



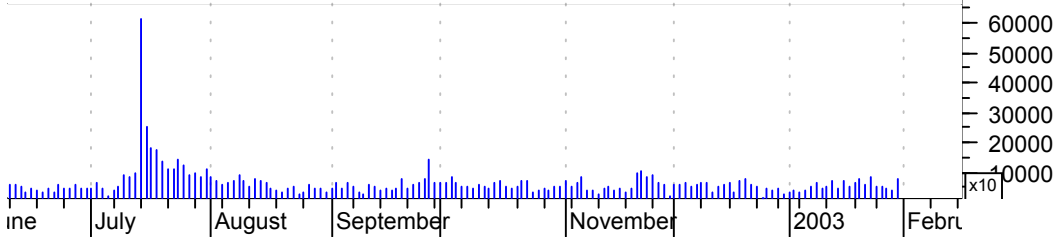
PGR symm. tri. / sell on downside brkout on decent volume

Progressive Corp (47.2500, 48.5000, 47.2000, 48.3400 +0.8900)



PHA symm. tri. / sell on downside brkout on larger than normal volume

Pharmacia Corp:N (40.6000, 41.8000, 40.5200, 41.7700 +1.0700)



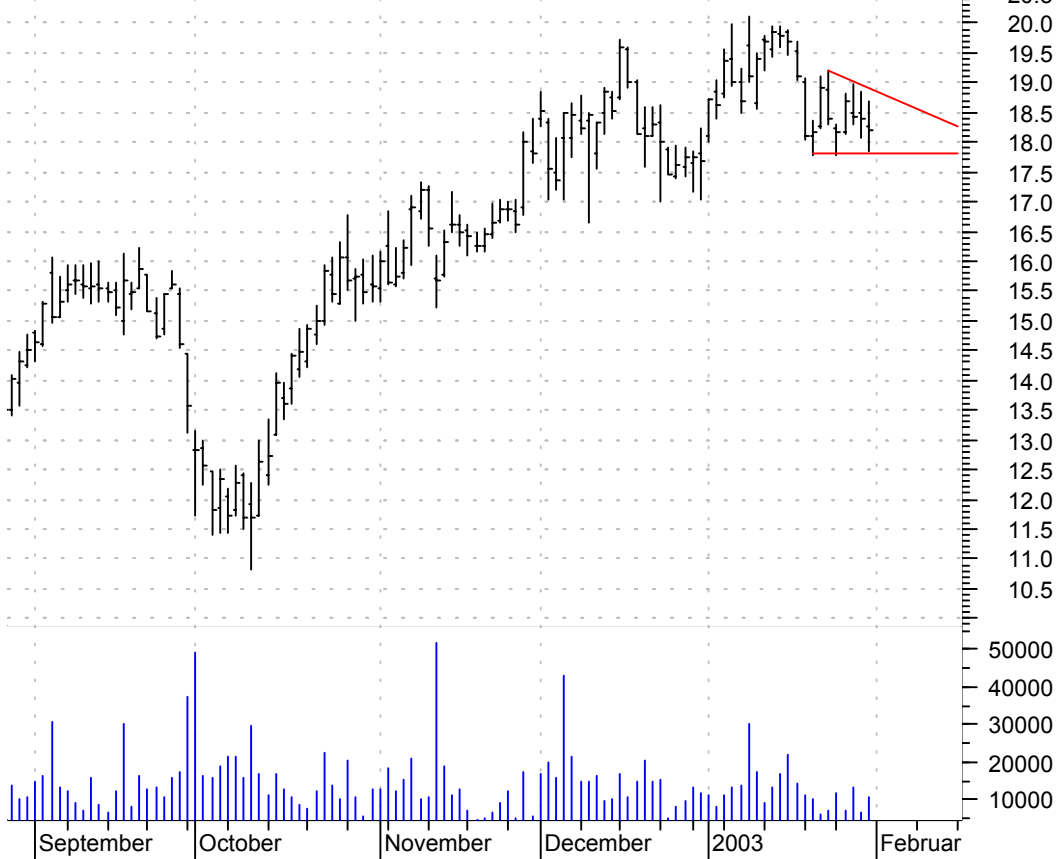
PIXR symm. tri. / sell on downside brkout on increased volume

Pixar:OTC (54.0700, 56.0000, 54.0000, 54.9900 +0.5200)



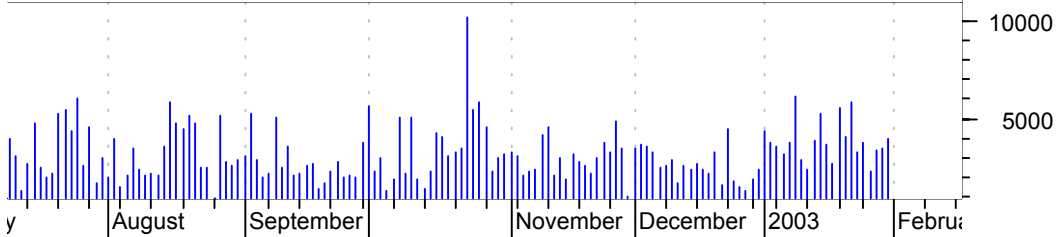
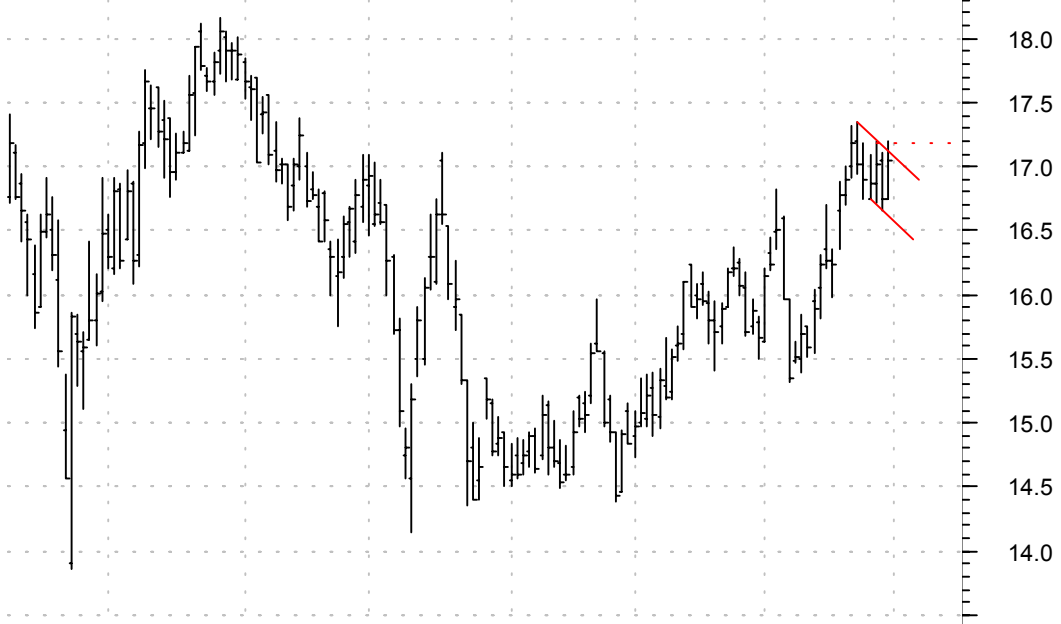
PSUN desc. tri. / sell on downside brkout on increased volume

Pacific Sunwear (18.2800, 18.6900, 17.8500, 18.2000 -0.1900)



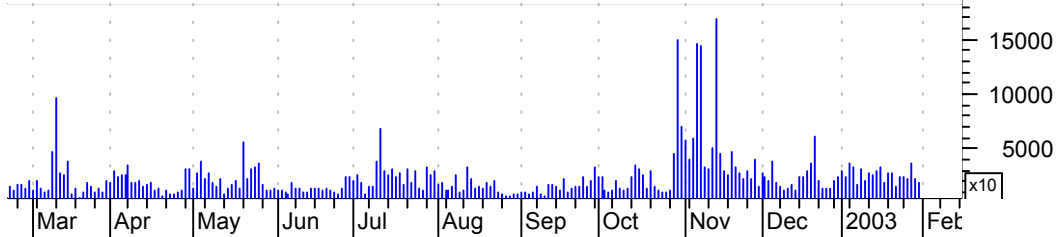
SU bull flag / buy on upside brkout thru dotted red line on larger than normal volume

Suncor Energy In (16.7500, 17.2000, 16.7500, 17.0500 +0.3000)



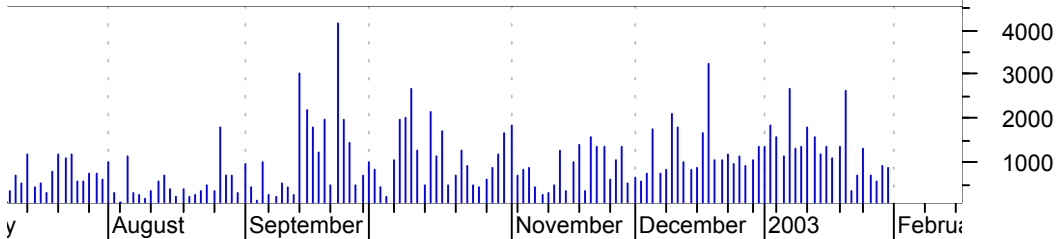
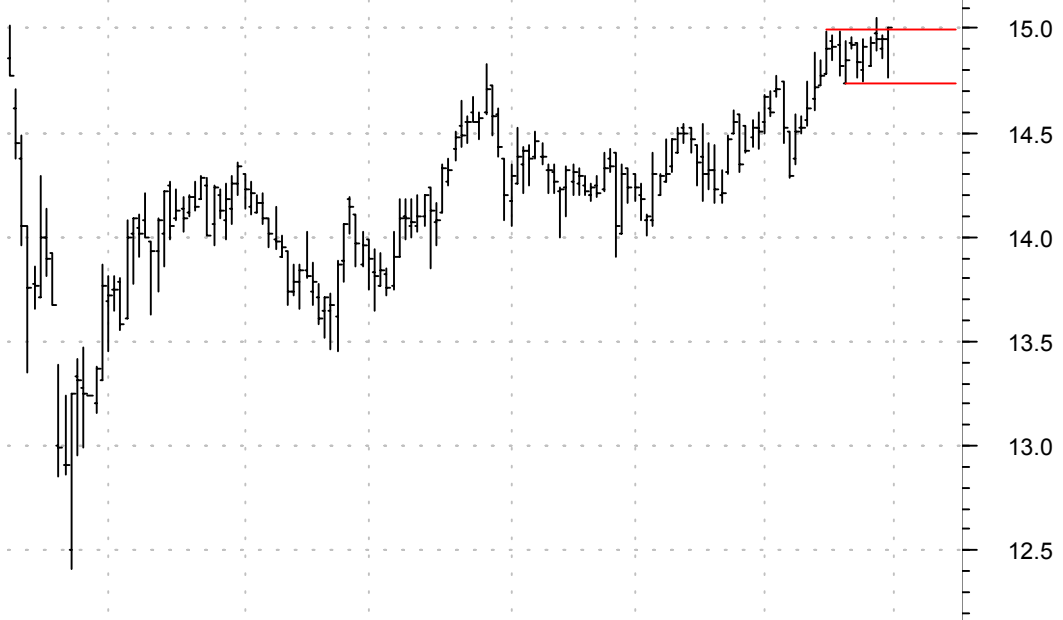
TEVA symm. tri. / buy on upside brkout on increased volume

Teva Pharm Ind I (37.4200, 38.4800, 37.2800, 38.4000 +1.0000)



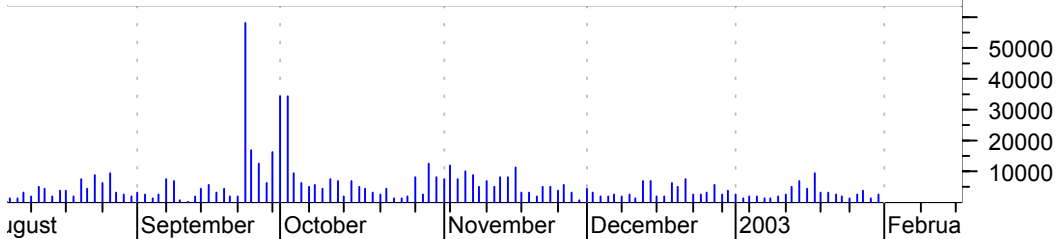
TRP sloppy rectangle brkout / buy and use the low of the pattern as a failure point

Trans Canada Pip (14.9500, 15.0000, 14.7600, 15.0000 +0.0500)



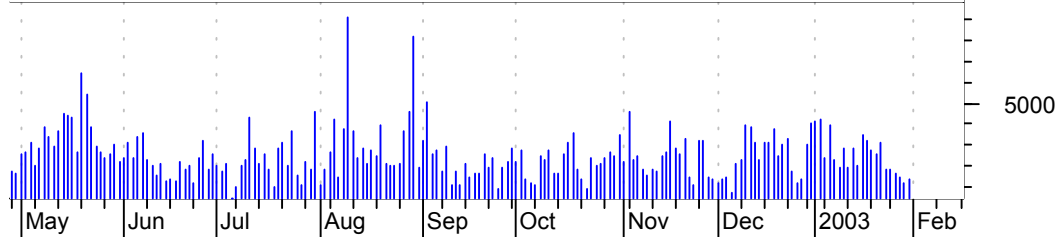
USPI asc. tri. / buy on upside brkout on increased volume

UNITED SURGICAL (18.0000, 18.3800, 17.6000, 18.1500 +0.1100)



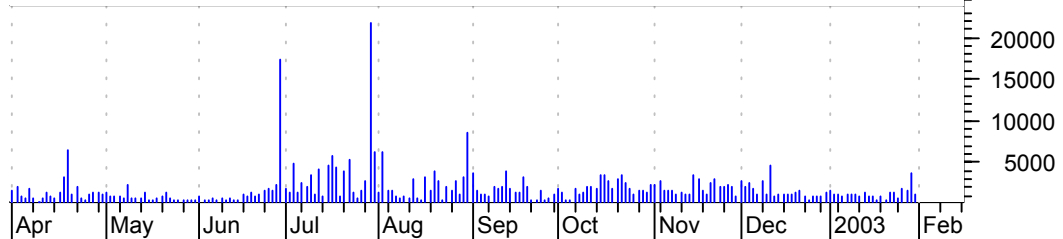
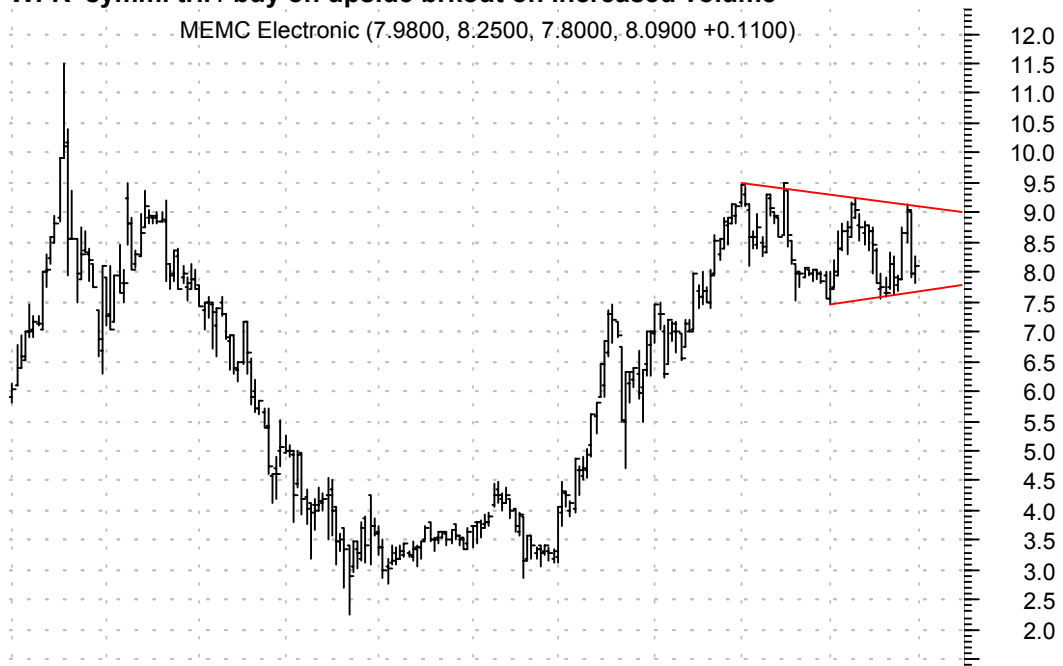
VPI asc. tri. / buy on upside brkout on increased volume

Vintage Petroleu (10.5200, 10.9500, 10.5100, 10.8300 +0.3300)



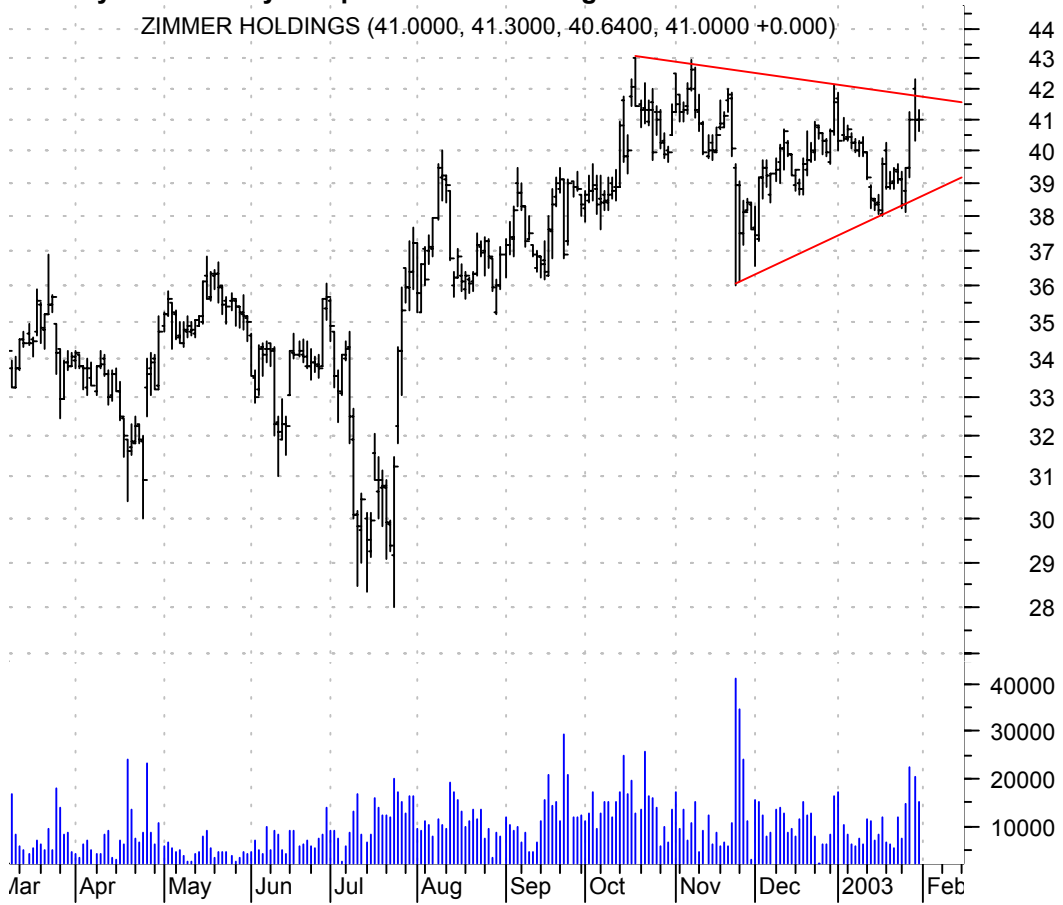
WFR symm. tri. / buy on upside brkout on increased volume

MEMC Electronic (7.9800, 8.2500, 7.8000, 8.0900 +0.1100)



ZMH symm. tri. / buy on upside brkout on larger than normal volume

ZIMMER HOLDINGS (41.0000, 41.3000, 40.6400, 41.0000 +0.000)



chartpatterns.com

Chart Pattern Analysis for Timing the Markets

KMatras@aol.com