

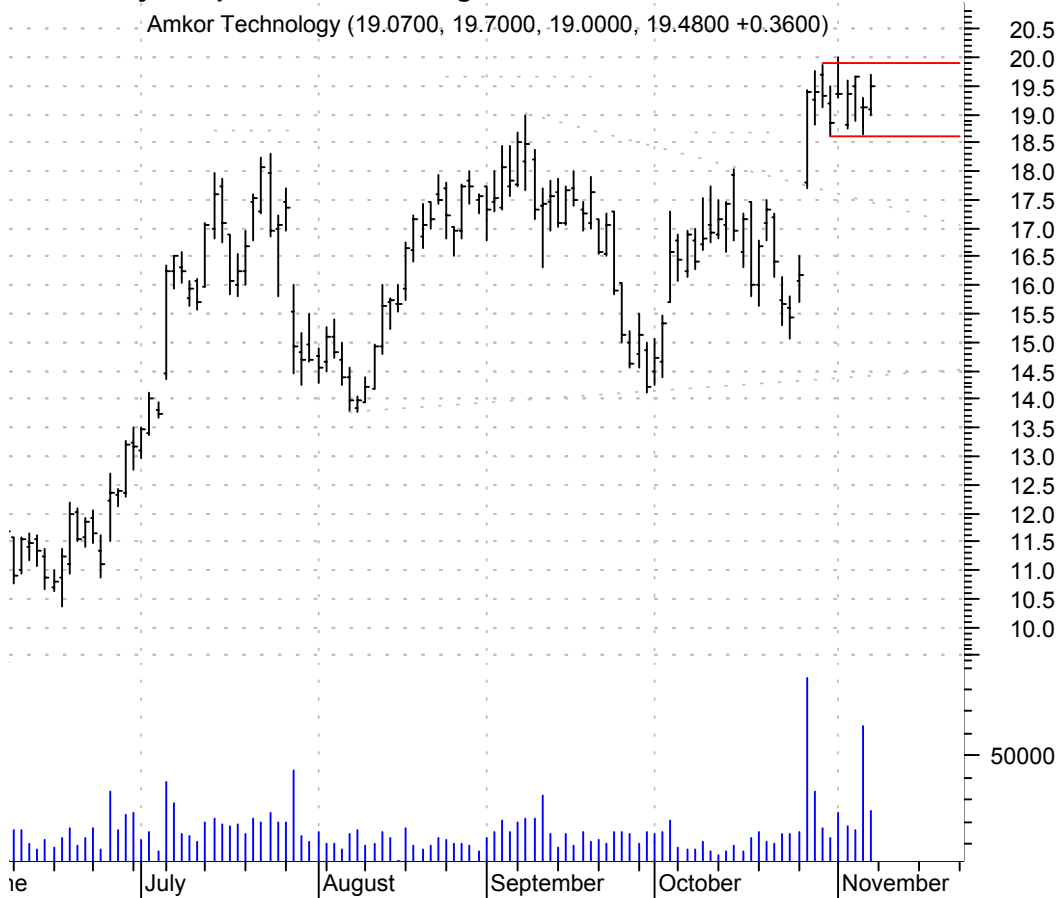
**ADP symm. tri. / buy on upside brkout on increased volume**

Automatic Data P (37.9400, 38.7500, 37.5500, 38.2300 +0.9800)



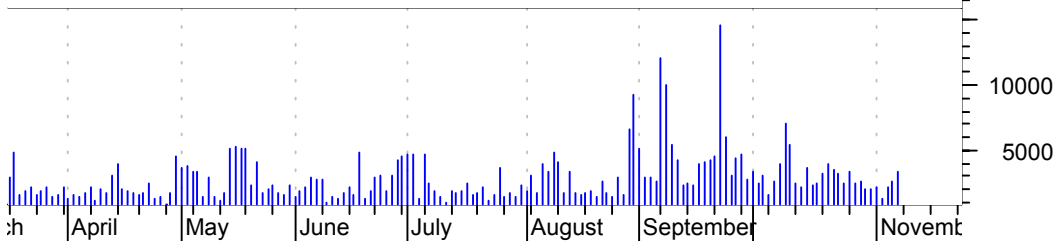
**AMKR sloppy rectangle preceded by 'pole-like' move (also preceded by 'failed' h. & sh.) / buy on upside brkout on larger than normal volume**

Amkor Technology (19.0700, 19.7000, 19.0000, 19.4800 +0.3600)



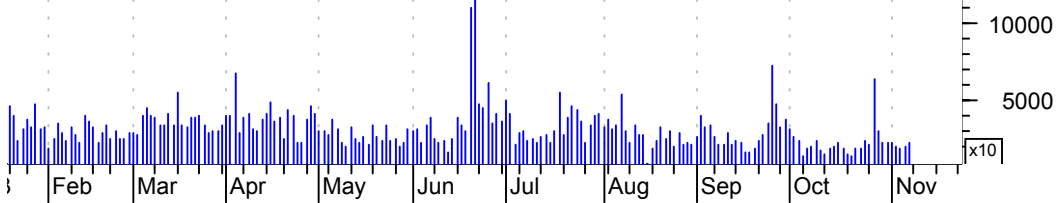
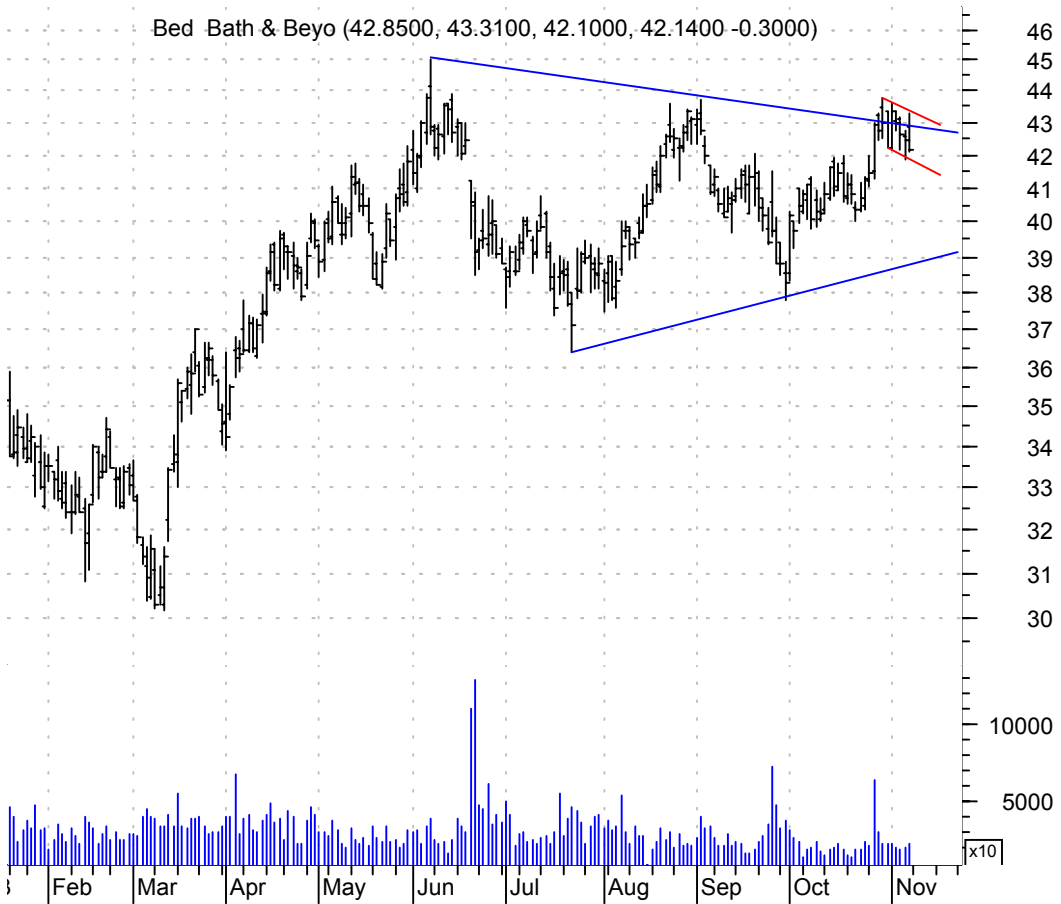
**AVX sloppy asc. tri. / buy on upside breakout thru dotted red line on increased volume**

AVX Corp:NYSE (15.5200, 16.1000, 15.4100, 15.8300 +0.3100)



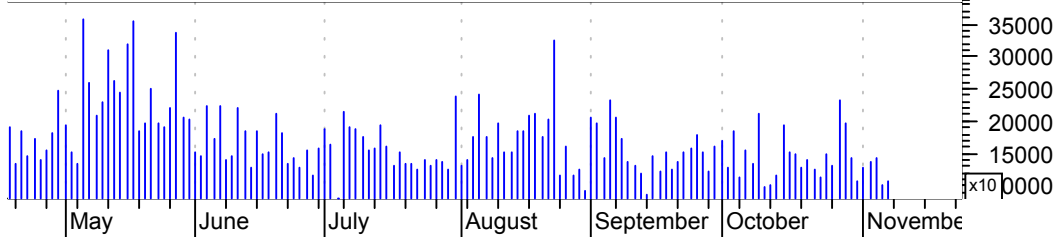
**BBBY small bull flag at breakout point of larger symm. tri. / buy on upside breakout of bull flag on increased volume**

Bed Bath & Beyo (42.8500, 43.3100, 42.1000, 42.1400 -0.3000)



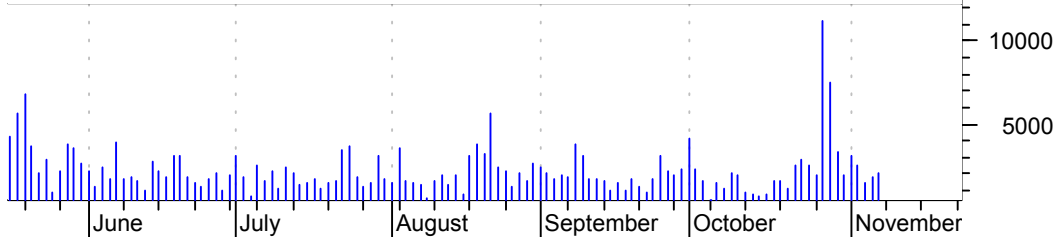
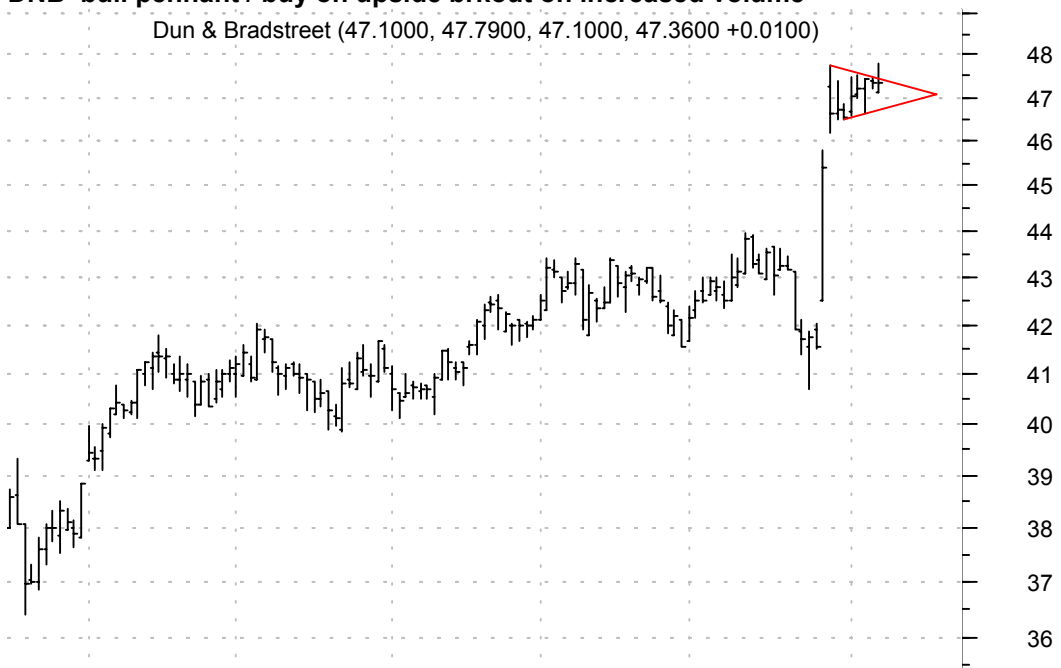
**DELL symm. tri. / buy on upside brkout on increased volume**

Dell Inc:OTC (36.7700, 36.8500, 35.8200, 36.0000 -0.3400)



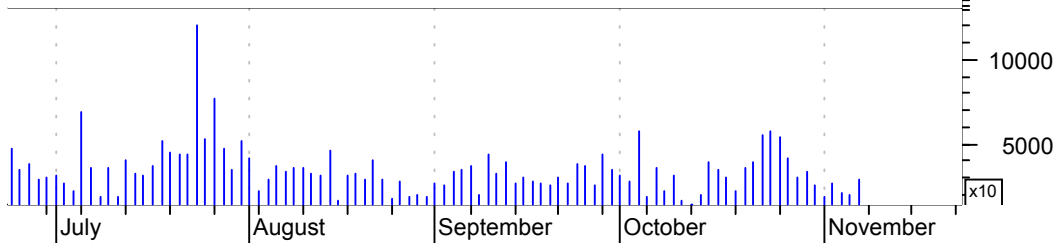
**DNB bull pennant / buy on upside brkout on increased volume**

Dun & Bradstreet (47.1000, 47.7900, 47.1000, 47.3600 +0.0100)



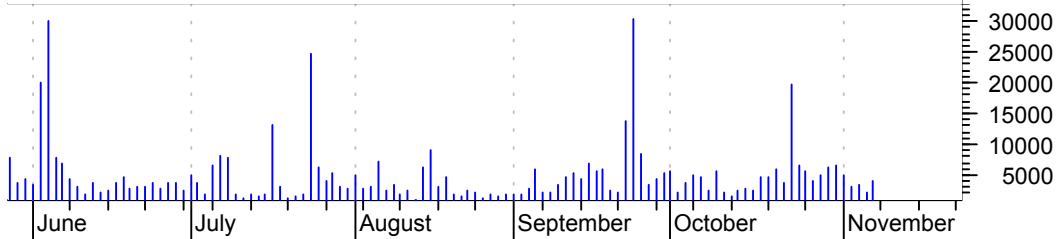
**DOW bullish pennant / buy on upside brkout on increased volume**

Dow Chemical Co: (37.5200, 37.8500, 37.4900, 37.6400 -0.3500)



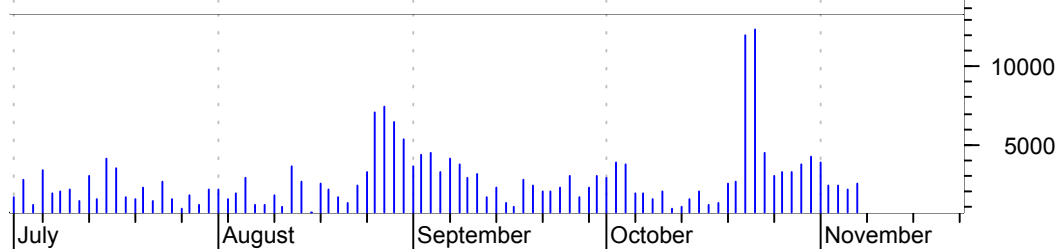
**GYI bullish flagging / buy on upside brkout on increased volume**

Getty Images Inc (43.7000, 44.6700, 43.4800, 44.3100 +0.4500)



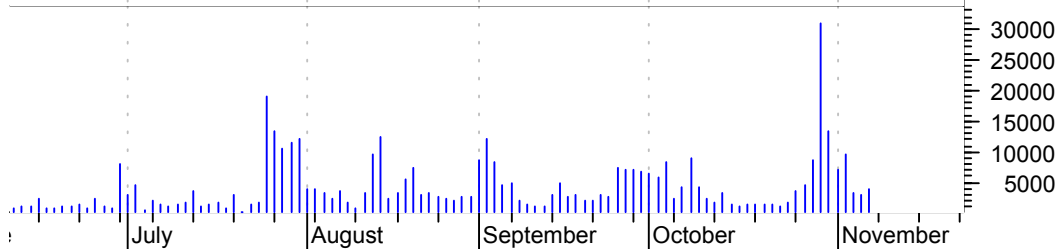
**HAR symm. tri. preceded by 'pole-like' move / buy on upside brkout on increased volume**

Harman Int'l Ind (130.000, 131.820, 129.950, 131.500 +2.2000)



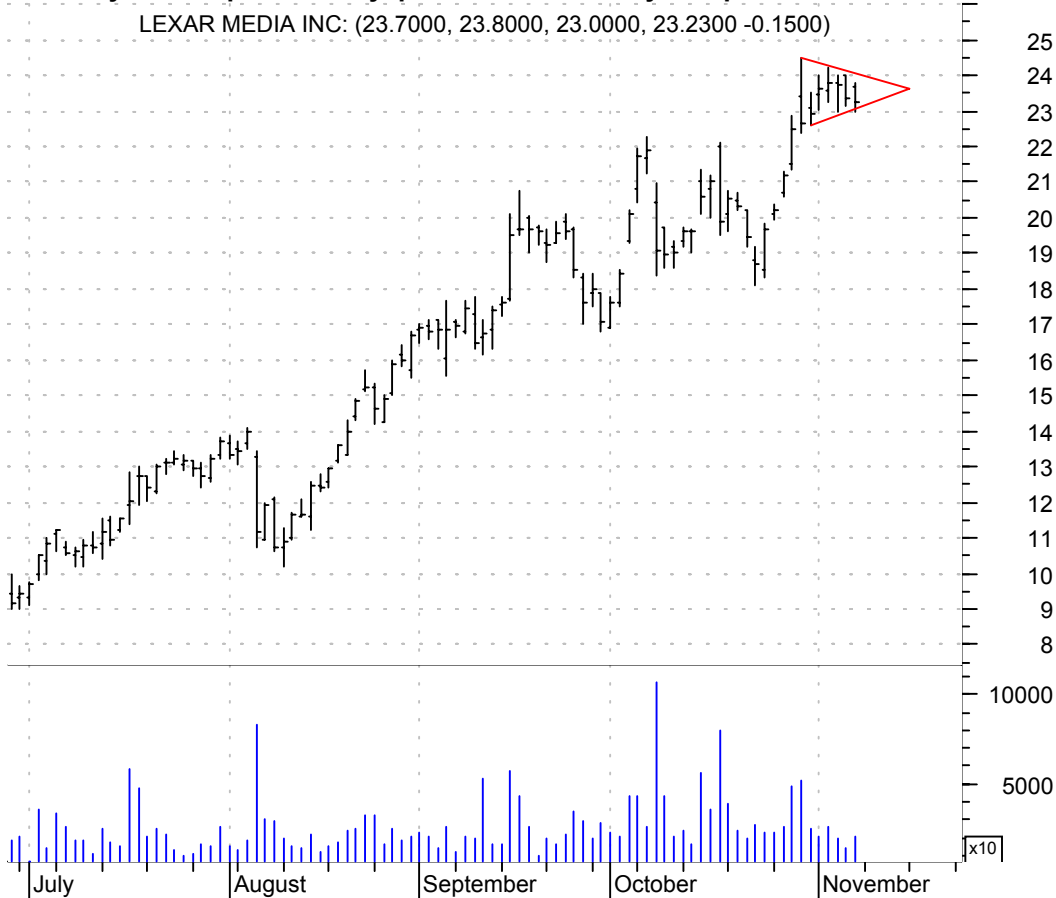
**KYPH asc. tri. preceded by 'pole-like' move / buy on upside brkout on increased volume**

KYPHON INC:OTC (28.4600, 28.6900, 27.6400, 27.9800 -0.5100)



**LEXR symm. tri. preceded by 'pole-like' move / buy on upside brkout on increased volume**

LEXAR MEDIA INC: (23.7000, 23.8000, 23.0000, 23.2300 -0.1500)



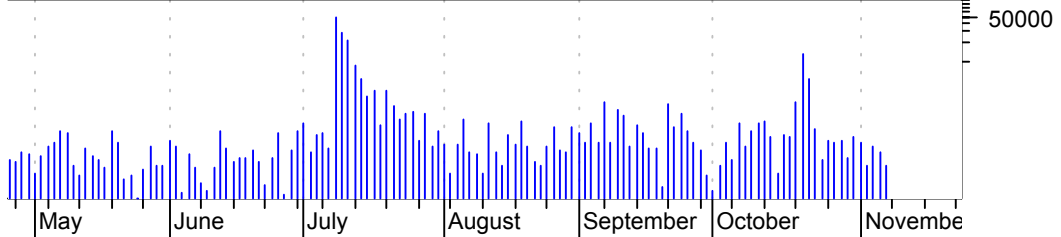
**LMNX symm. tri. / buy on upside brkout on increased volume**

LUMINEX CP:OTC (8.9500, 9.3600, 8.7600, 9.1900 -0.0100)



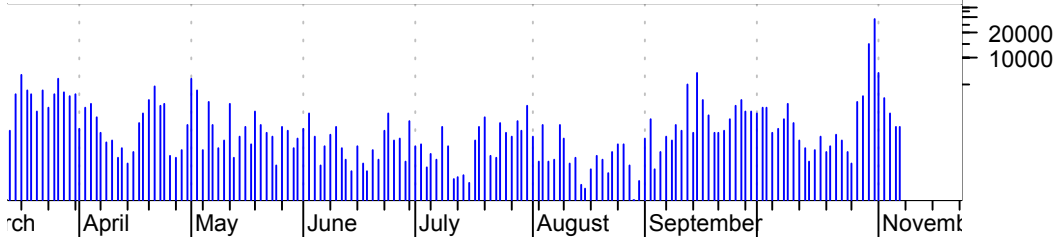
**LOGI bull pennant / buy on upside brkout on increased volume**

Logitech Intl AD (39.7500, 40.3600, 39.7500, 40.0200 +1.0000)



**MANT symm. tri. / buy on upside brkout on increased volume**

MANTECH INTL CP (26.0000, 26.4400, 25.7000, 26.4400 +0.4400)



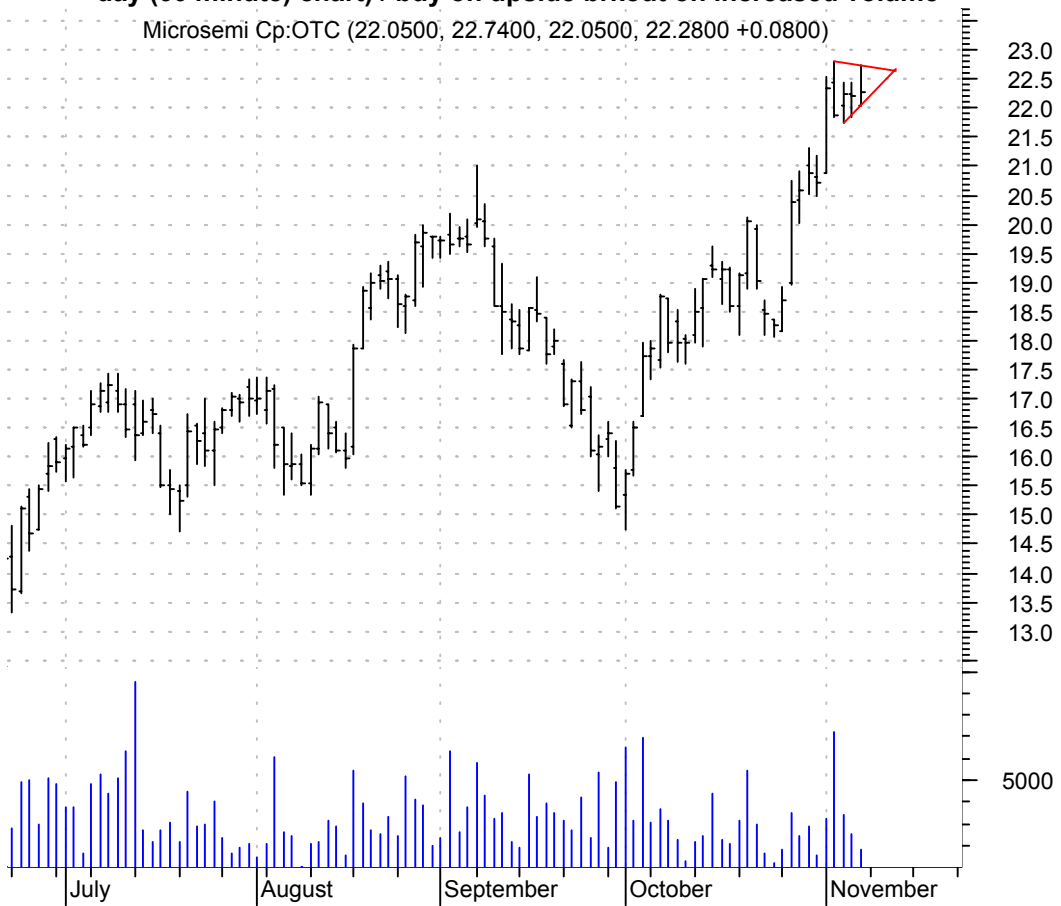
**MRGE symm. tri. / buy on upside breakout on increased volume**

Merge Technologi (18.0000, 18.2500, 17.7600, 17.9400 +0.0800)



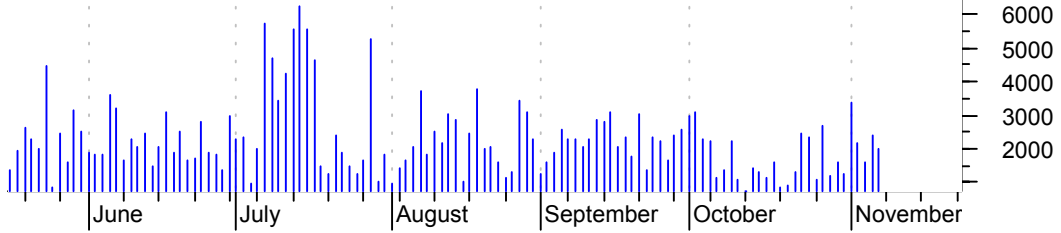
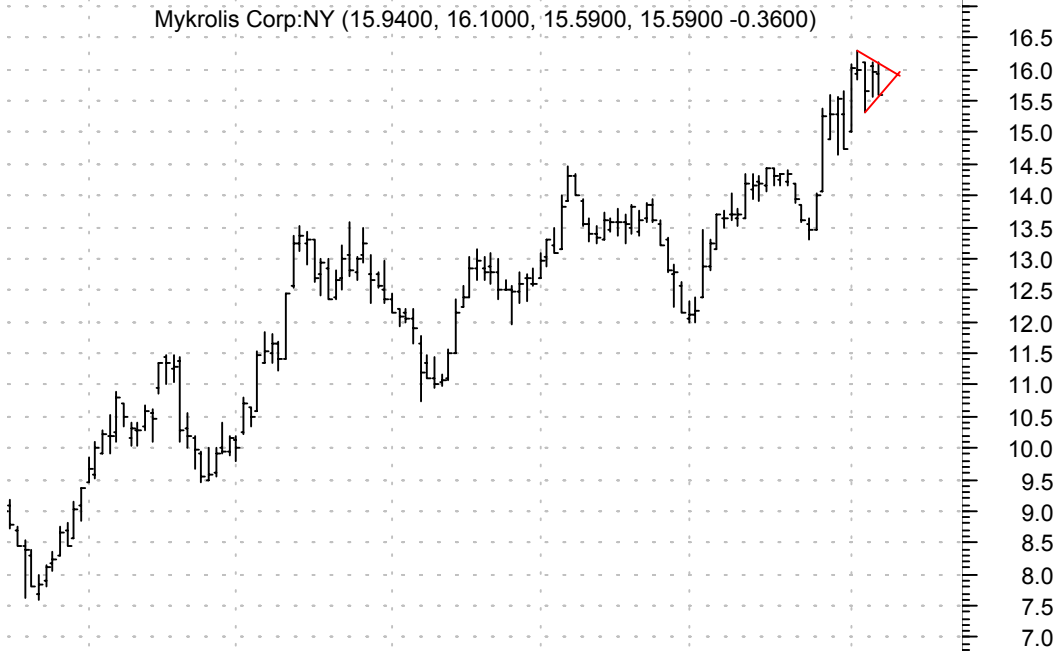
**MSCC symm. tri. preceded by 'pole-like' move (symm. tri. can be more easily seen on an intra-day (60 minute) chart) / buy on upside breakout on increased volume**

Microsemi Cp:OTC (22.0500, 22.7400, 22.0500, 22.2800 +0.0800)

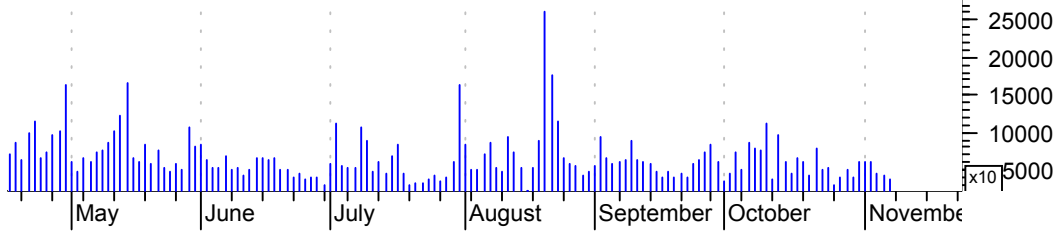
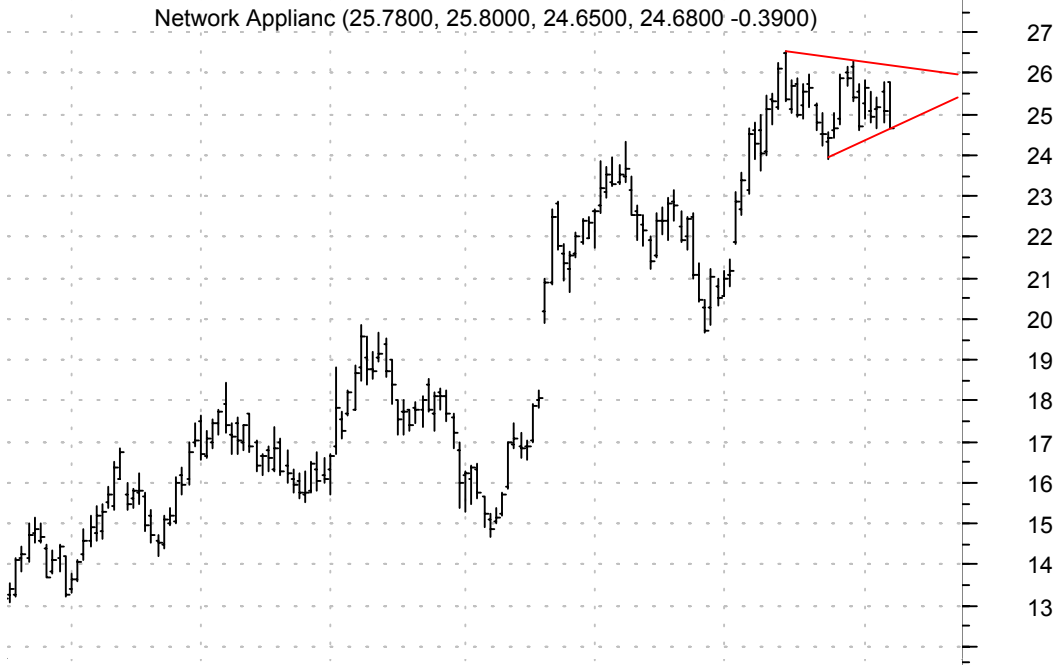




**MYK small symm. tri. (can be more easily seen on an intra-day (60 minute) chart) / buy on upside breakout on increased volume**

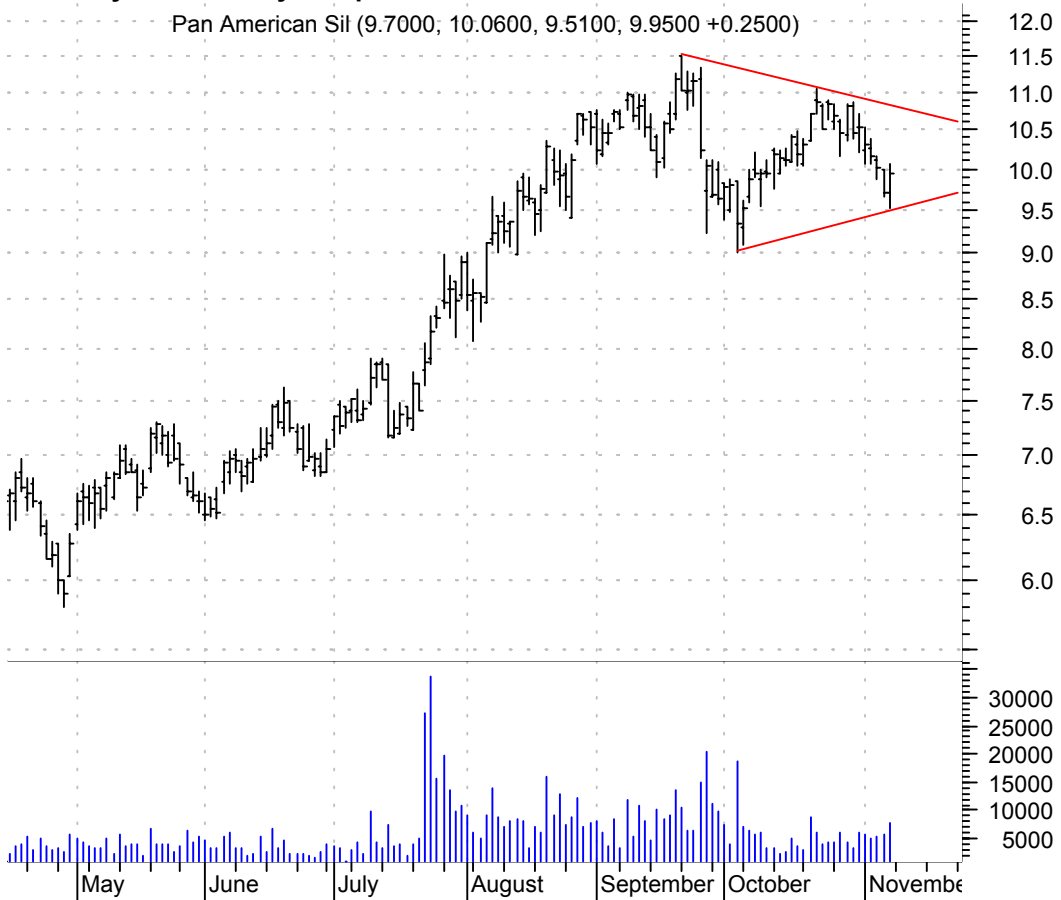


**NTAP symm. tri. preceded by 'pole-like' move / buy on upside breakout on increased volume**



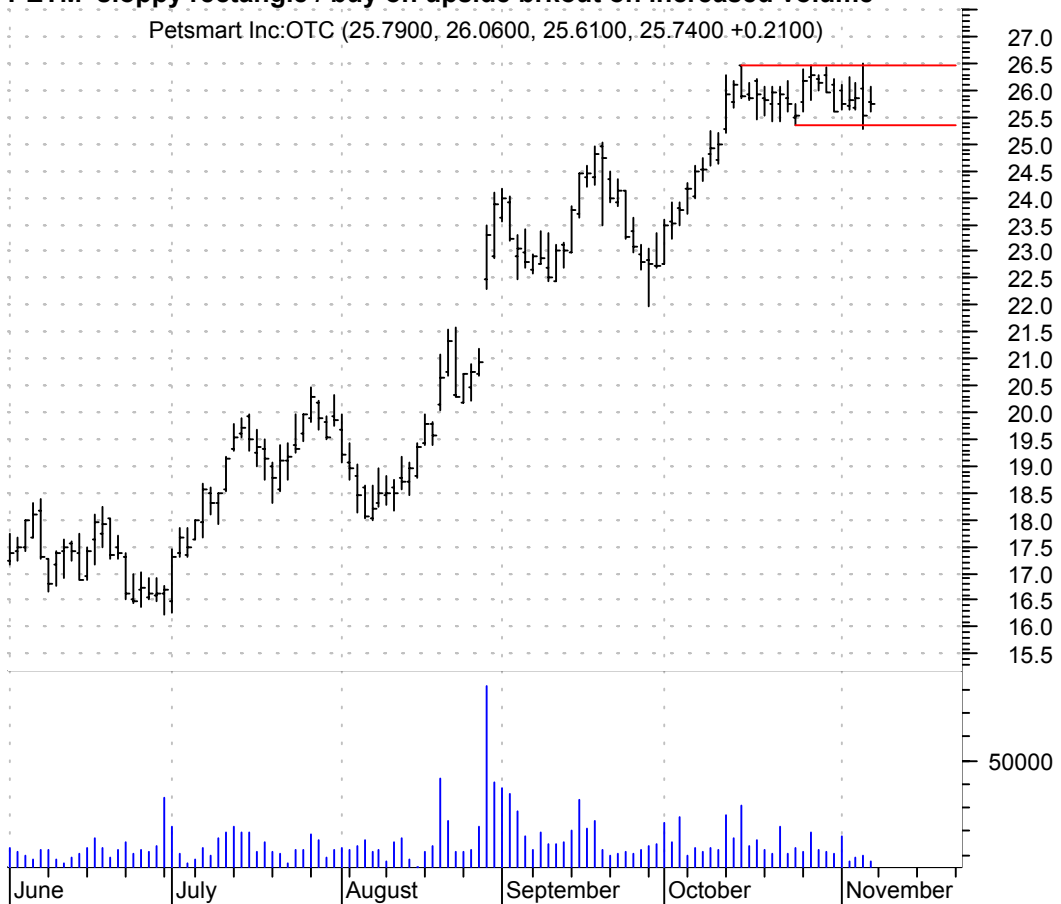
**PAAS symm. tri. / buy on upside brkout on increased volume**

Pan American Sil (9.7000, 10.0600, 9.5100, 9.9500 +0.2500)



**PETM sloppy rectangle / buy on upside brkout on increased volume**

Petsmart Inc:OTC (25.7900, 26.0600, 25.6100, 25.7400 +0.2100)



**PRSF symm. tri. / buy on upside breakout on increased volume**

Portal Software: (15.9300, 16.2800, 15.6500, 16.2500 +0.4500)



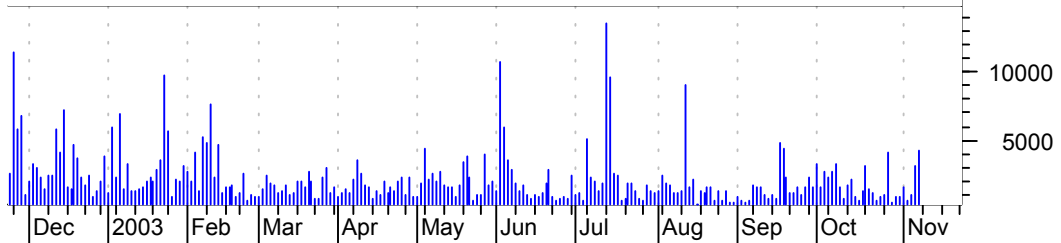
**RE sloppy falling wedge preceded by 'pole-like' move / buy on upside breakout on increased volume**

Everest Re Group (83.6000, 83.6000, 81.5400, 82.0000 -1.4500)



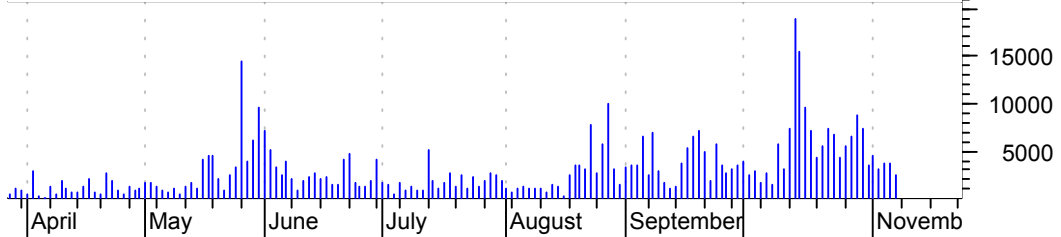
**SCHS symm. tri. / buy on upside brkout on increased volume**

School Specialty (28.1000, 28.4000, 27.9300, 28.1300 +0.1300)



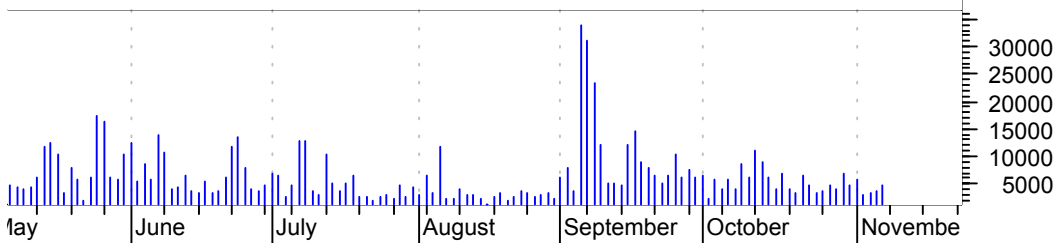
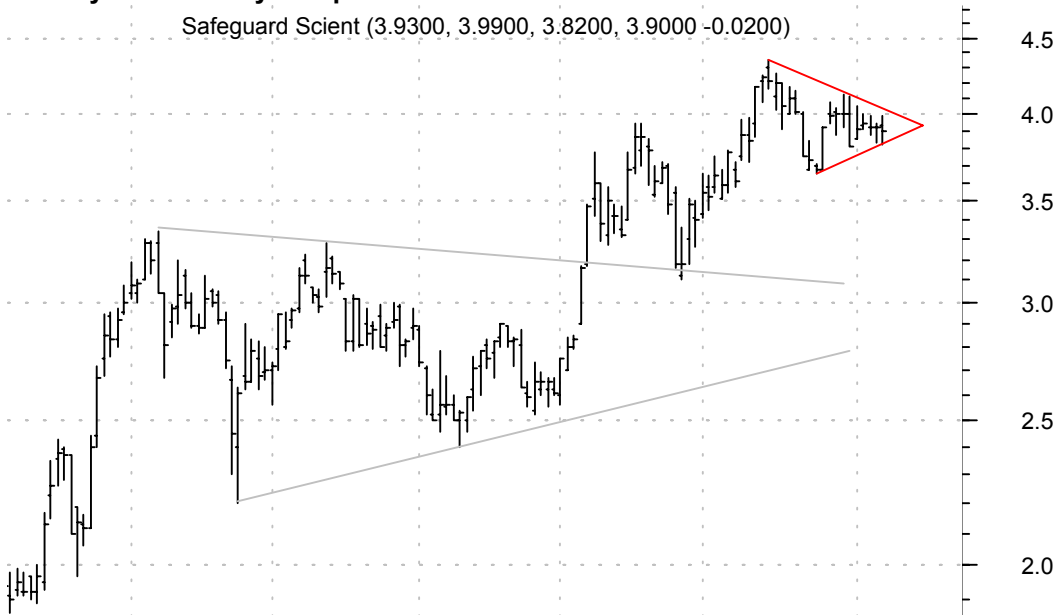
**SEAC symm. tri. / buy on upside brkout on increased volume**

Seachange Intl I (15.7000, 15.9600, 15.0800, 15.1300 -0.5200)



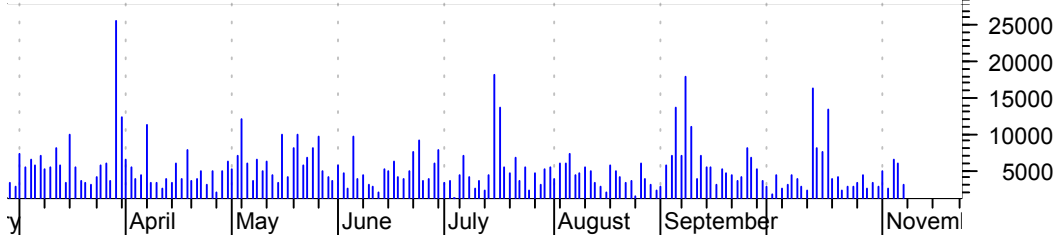
**SFE symm. tri. / buy on upside breakout on increased volume**

Safeguard Scient (3.9300, 3.9900, 3.8200, 3.9000 -0.0200)



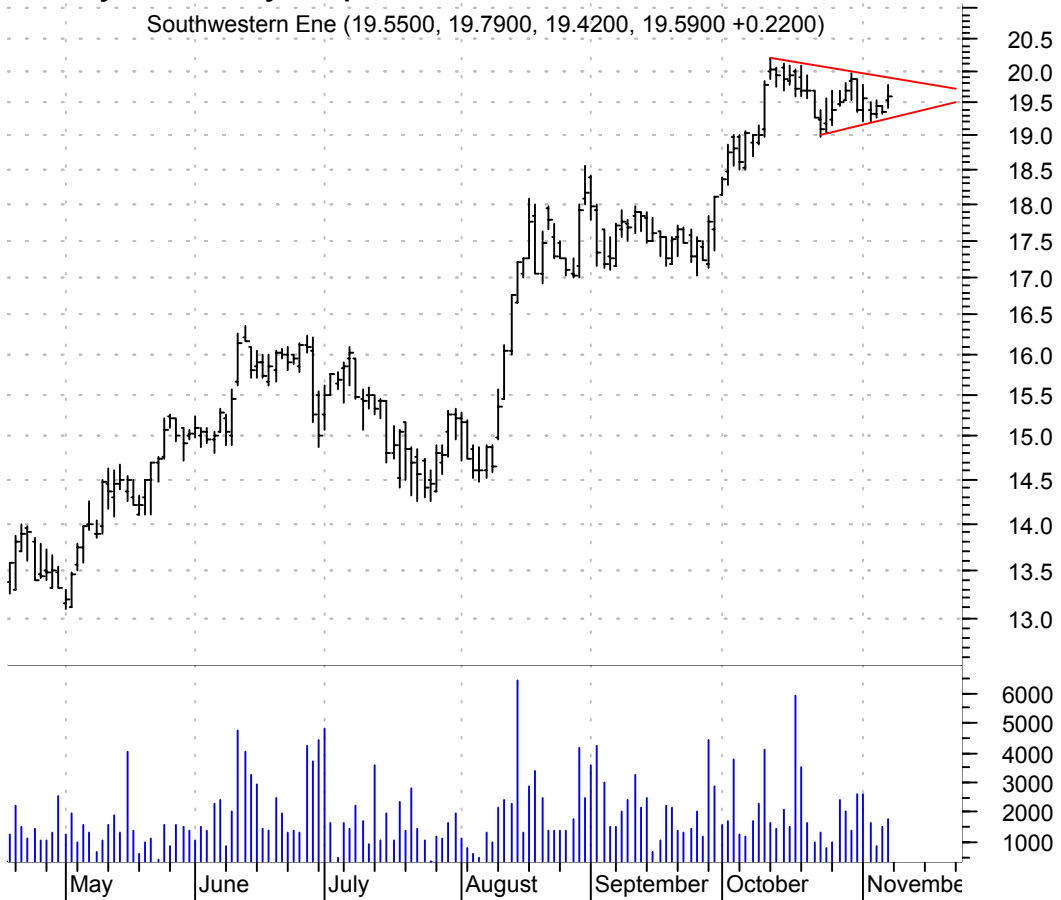
**SWFT desc. tri. preceded by 'pole-like' move / sell on downside breakout on increased volume**

Swift Transporta (23.2200, 23.3500, 22.7700, 22.8400 -0.3100)



**SWN symm. tri. / buy on upside brkout on increased volume**

Southwestern Ene (19.5500, 19.7900, 19.4200, 19.5900 +0.2200)



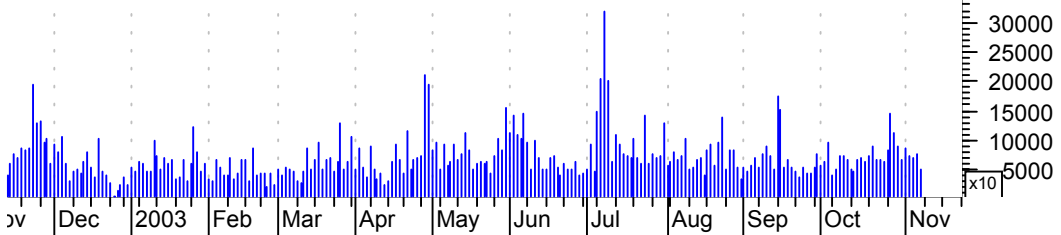
**TSCO symm. tri. / buy on upside brkout on increased volume**

Tractor Supply C (42.7500, 43.1700, 42.0000, 42.2700 -0.2400)



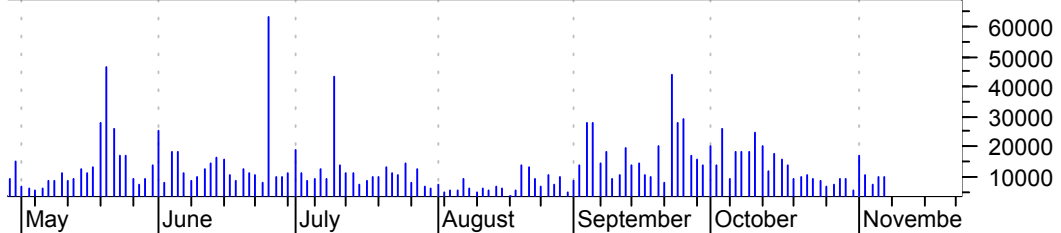
**TSM symm. tri. / buy on upside breakout on increased volume**

Taiwan Semicondu (11.0200, 11.7400, 11.0200, 11.4200 +0.0400)



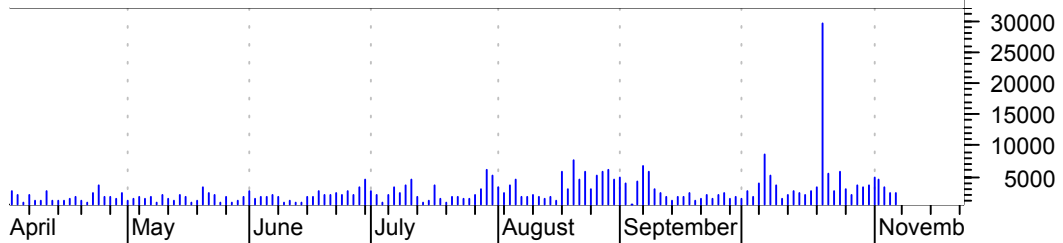
**TSN symm. tri. / buy on upside breakout on increased volume**

Tyson Foods Inc (14.2200, 14.2500, 14.1200, 14.2300 +0.0000)



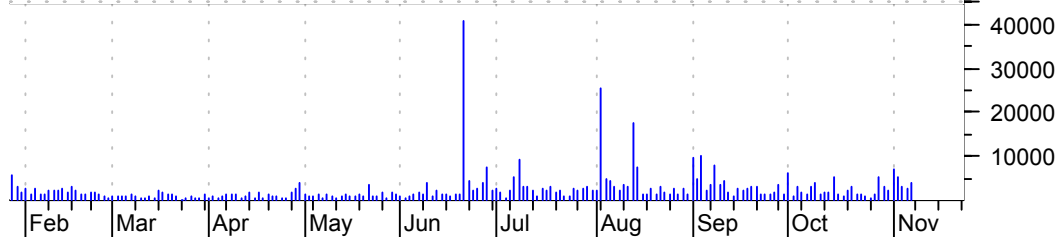
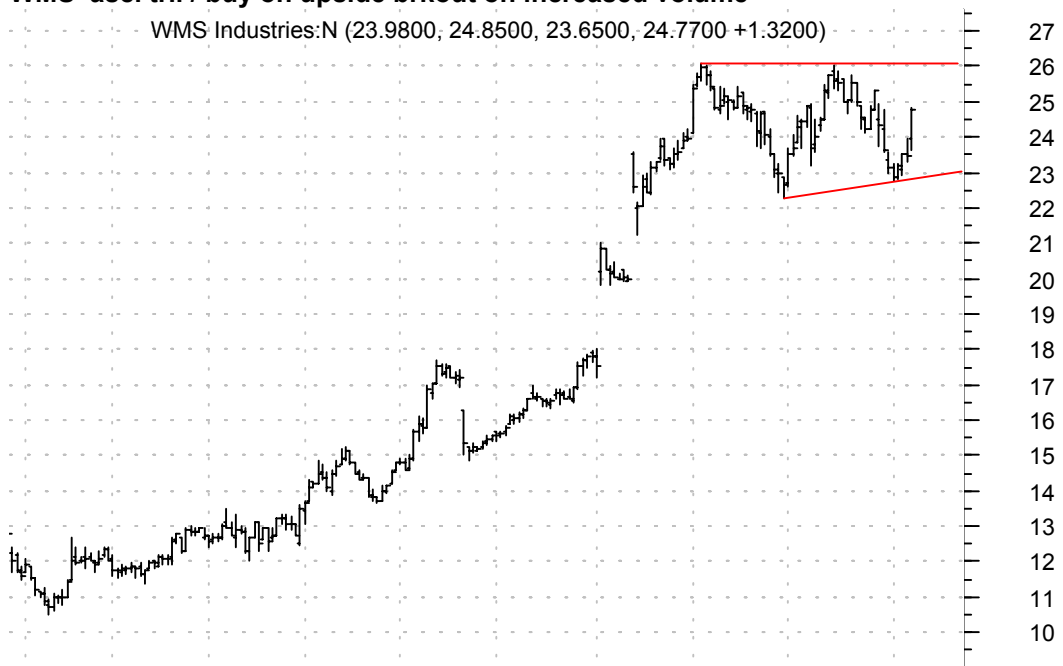
**TUES symm. tri. / buy on upside brkout on increased volume**

Tuesday Morning (31.8900, 31.9500, 31.3800, 31.7600 +0.0100)



**WMS asc. tri. / buy on upside brkout on increased volume**

WMS Industries:N (23.9800, 24.8500, 23.6500, 24.7700 +1.3200)





**chartpatterns.com**  
Chart Pattern Analysis for Timing the Markets

[KMatras@aol.com](mailto:KMatras@aol.com)