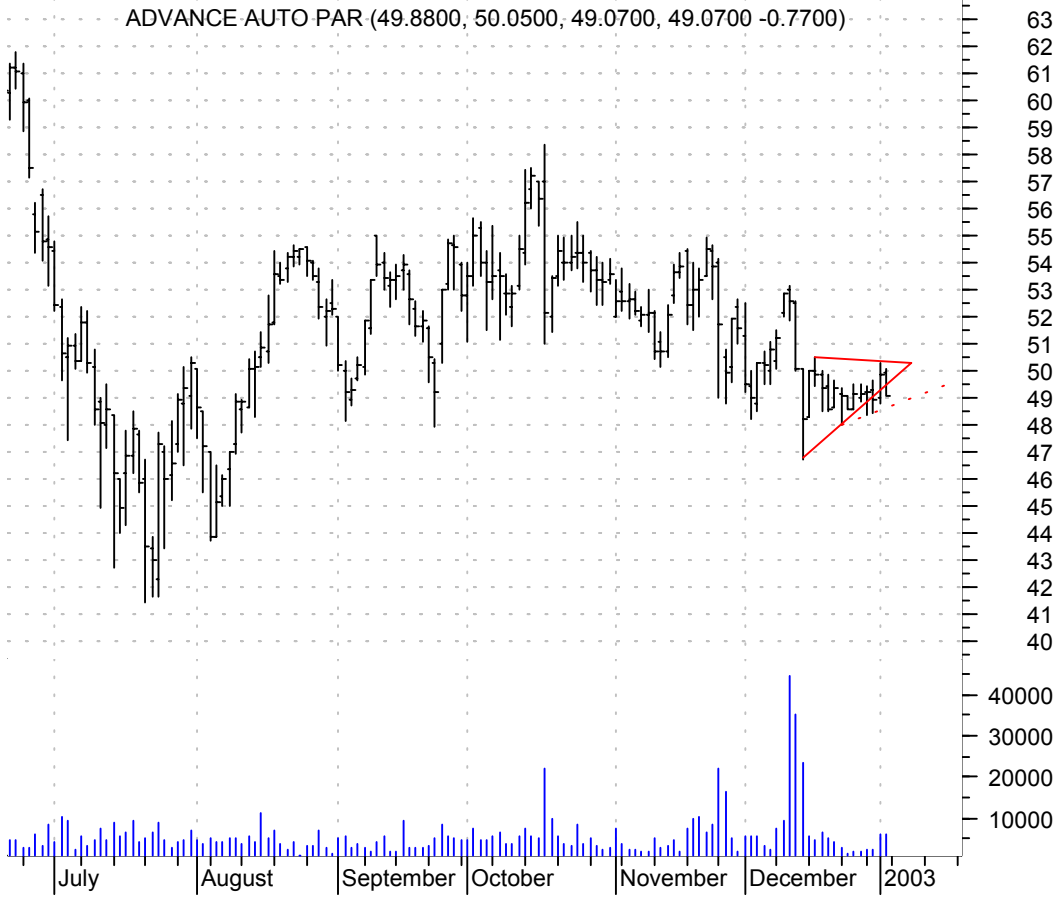


**AAP symm. tri. brkout / sell on downside brkout thru dotted red line decent volume**



**ACGL bear flag / sell on downside brkout on decent volume**



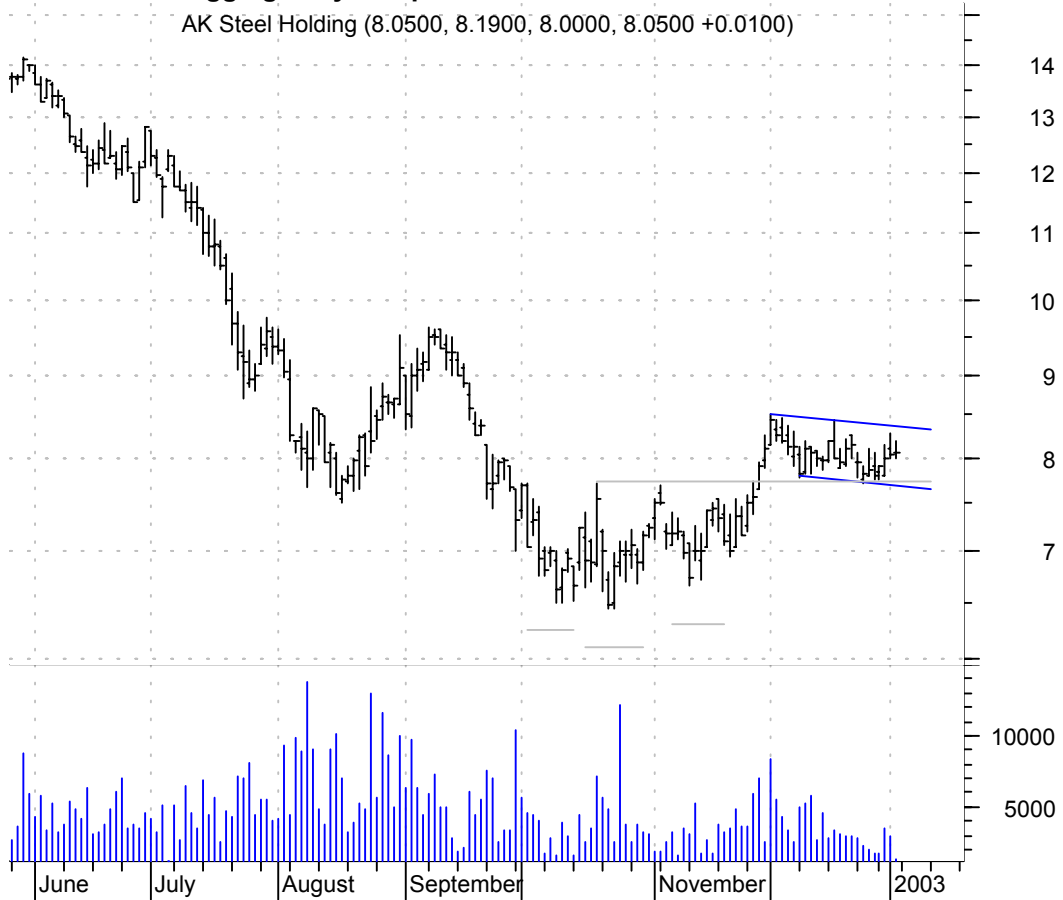
**AG 'complicated' h. & sh. / sell on downside brkout on increased volume**

AGCO Corp:NYSE (22.3800, 22.4500, 22.1100, 22.2700 -0.1000)



**AKS bullish flagging / buy on upside brkout on decent volume**

AK Steel Holding (8.0500, 8.1900, 8.0000, 8.0500 +0.0100)



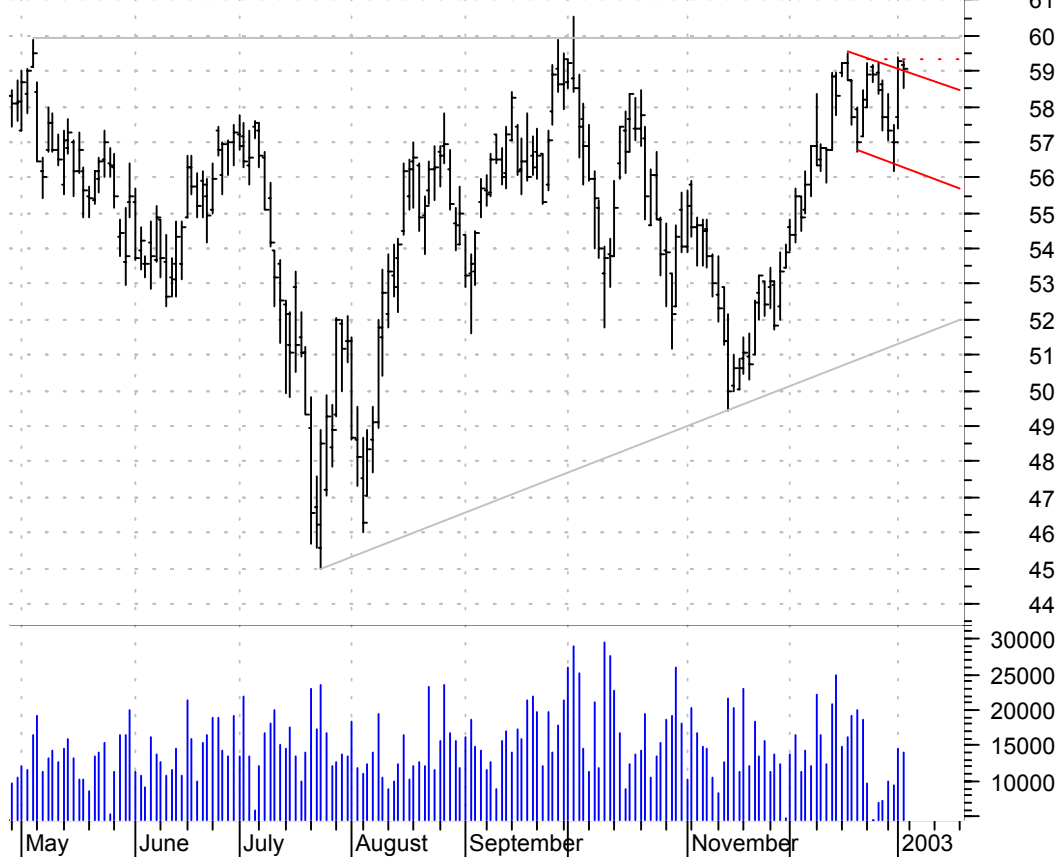
**AMT symm. tri. preceded by 'pole-like' move / buy on upside brkout on increased volume**

American Tower C (3.8000, 3.8400, 3.6600, 3.6900 -0.1600)



**APA bull flag brkout / buy on upside brkout thru red dotted line on decent volume**

Apache Corp:NYSE (59.1500, 59.2900, 58.5100, 59.0900 -0.2100)



**BVN symm. tri. / buy on upside brkout on decent volume**

Minas Buenaventu (25.8500, 26.6100, 25.6600, 26.2600 +0.4100)



**C h. & sh. brkout (and return) / sell on move thru red dotted line on increased volume**

Citigroup Inc:NY (36.3500, 36.4000, 35.8100, 36.1100 -0.2400)



**DY falling wedge preceded by 'pole' / buy on upside breakout on increased volume**

Dycom Industries (13.5900, 13.7700, 13.4000, 13.5800 +0.0000)



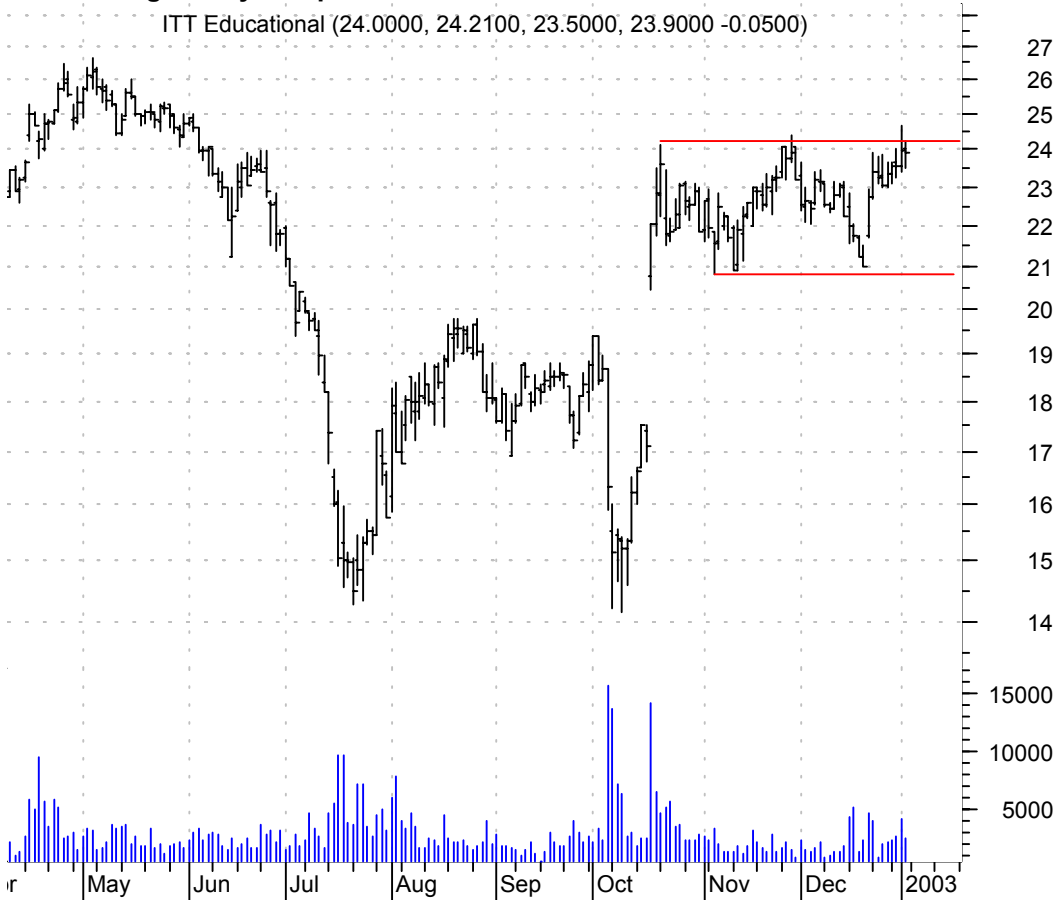
**EBAY symm. tri. / buy on upside breakout on larger than normal volume**

eBay Inc.OTC (69.6000, 70.0000, 68.9000, 69.9300 +0.5800)



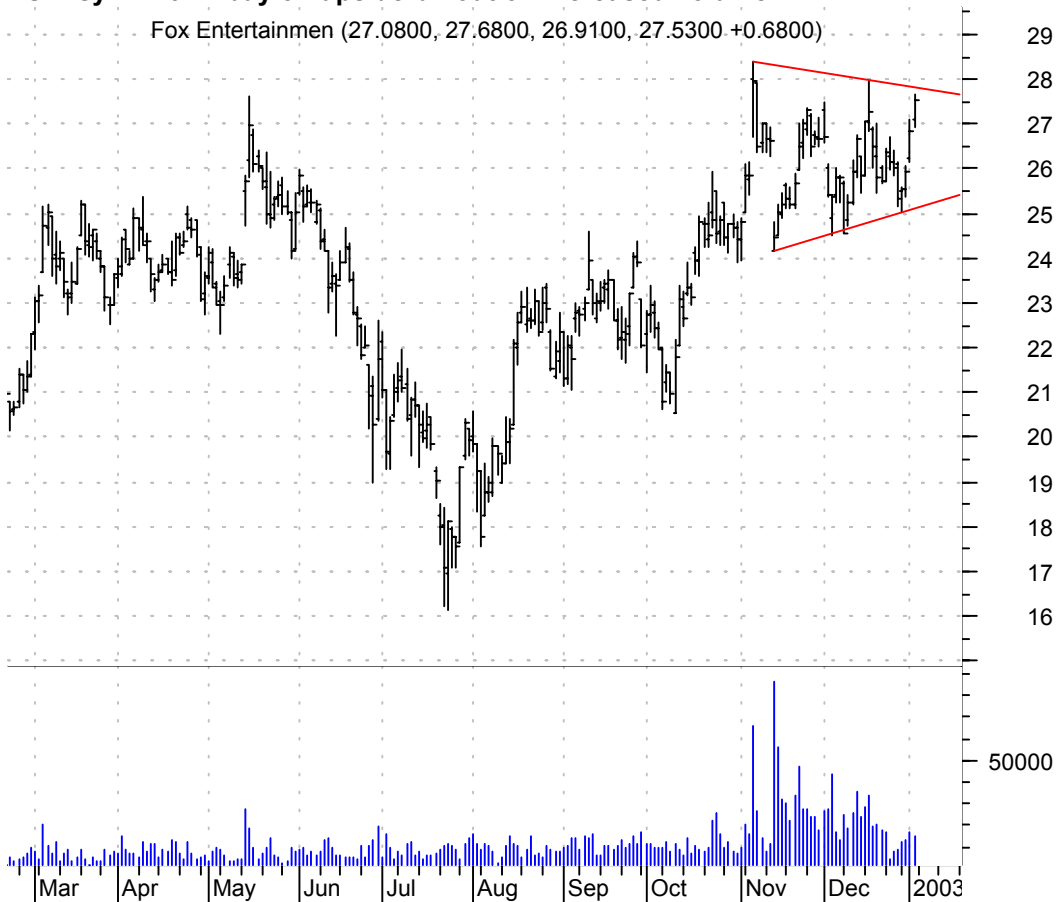
**ESI rectangle / buy on upside breakout on increased volume**

ITT Educational (24.0000, 24.2100, 23.5000, 23.9000 -0.0500)



**FOX symm. tri. / buy on upside breakout on increased volume**

Fox Entertainmen (27.0800, 27.6800, 26.9100, 27.5300 +0.6800)



**GG symm. tri. / buy on upside brkout on decent volume**

Goldcorp B:NYSE (12.6500, 13.3300, 12.5600, 13.0700 +0.3800)



**HLTH falling wedge brkout / buy on upside brkout thru red dotted line on larger than normal volume**

Webmd Corp:OTC (8.7800, 9.0400, 8.7600, 8.9100 +0.1600)



**HRH asc. tri. / buy on upside brkout on increased volume**

Hilb Rogal & Ha (42.4800, 43.1500, 42.0600, 42.5500 +0.1600)



**ICPT symm. tri. brkout / buy on upside brkout thru red dotted line on larger than normal volume**

Intercept Inc:OT (17.2100, 17.9200, 17.1000, 17.7100 +0.4600)





**IDXX rising wedge / sell on downside brkout on increased volume**

Idexx Laboratori (33.4400, 33.5300, 32.9300, 32.9800 -0.4600)



**IPCR symm. tri. / buy on upside brkout on larger than normal volume**

IPC Holdings Ltd (31.3700, 31.9900, 31.3700, 31.9000 +0.4100)



**JEC bull flag / buy on upside brkout on increased volume**

Jacobs Engineeri (36.4000, 36.5000, 35.6400, 35.9300 -0.4700)



**MI symm. tri. / buy on upside brkout on increased volume**

Marshall & Ilesie (28.2500, 28.3900, 28.0700, 28.2000 -0.1400)



**MSM rectangle / buy on upside breakout on larger than normal volume**

MSC Industrial D (17.9800, 18.0000, 17.7500, 17.7500 -0.2000)



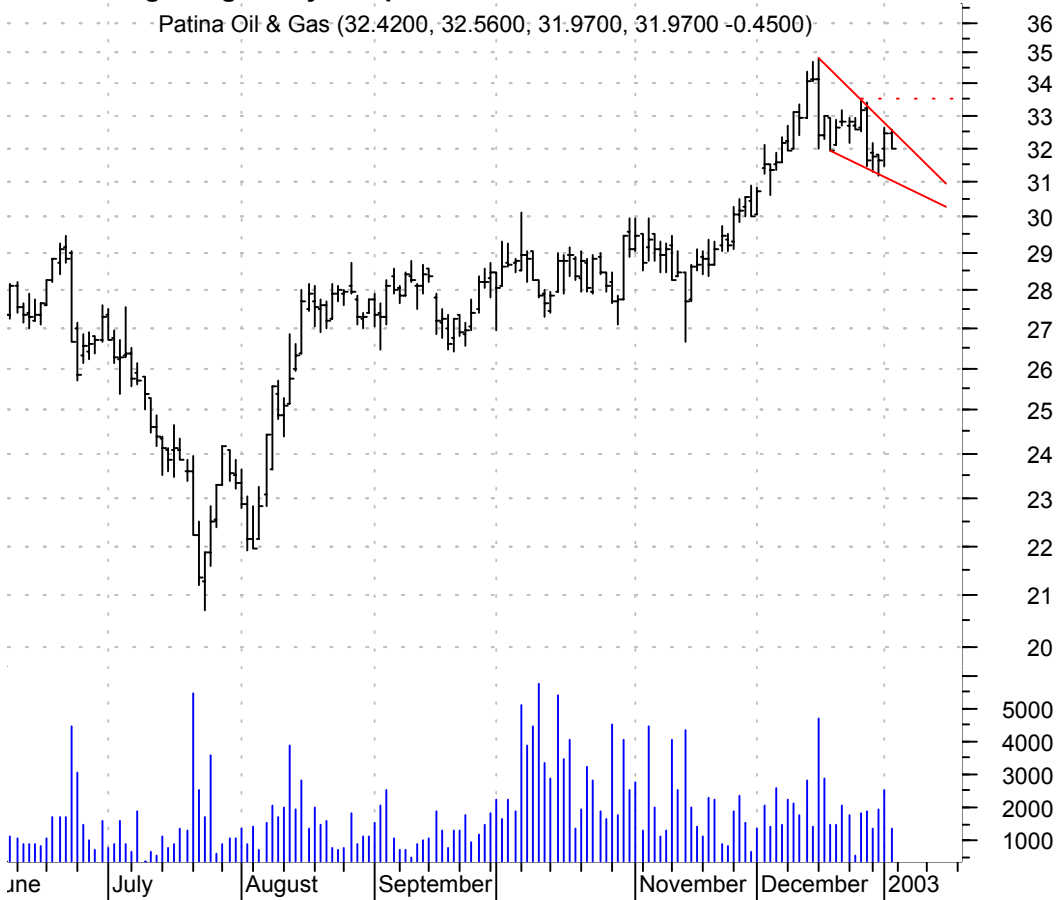
**PDX sloppy asc. tri. / buy on upside breakout on increased volume**

Pediatric Medica (41.0500, 41.4700, 40.9000, 41.0500 -0.0500)



**POG falling wedge / buy on upside breakout thru red dotted line on increased volume**

Patina Oil & Gas (32.4200, 32.5600, 31.9700, 31.9700 -0.4500)



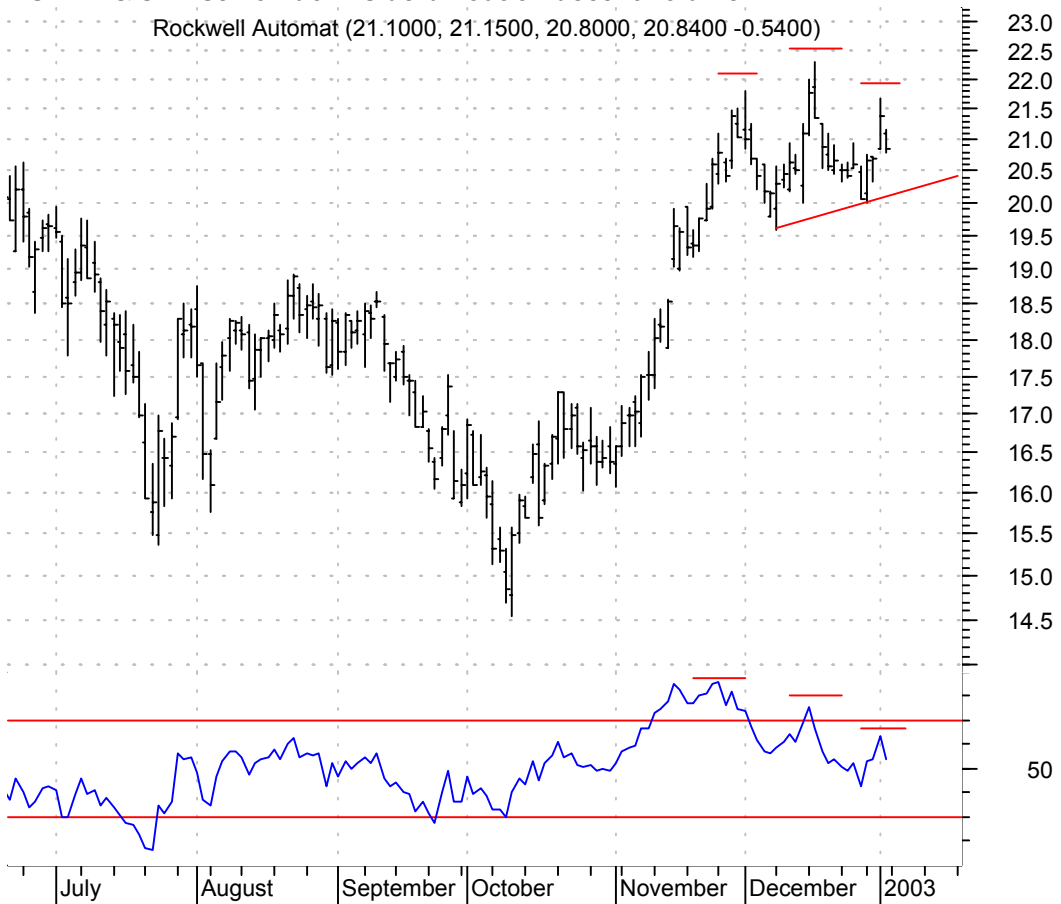
**ROAD symm. tri. / buy on upside breakout on increased volume**

Roadway Express (38.6100, 38.7600, 38.0000, 38.2100 -0.3900)



**ROK h. & sh. / sell on downside brkout on decent volume**

Rockwell Automat (21.1000, 21.1500, 20.8000, 20.8400 -0.5400)



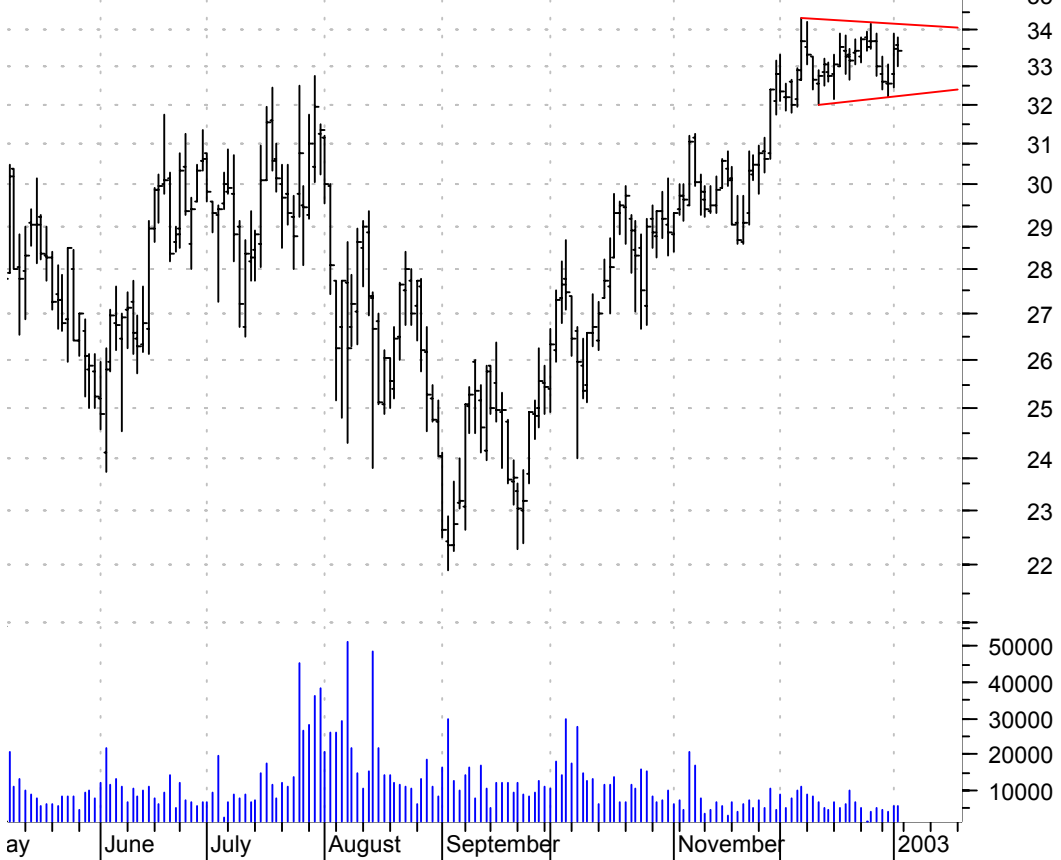
**RPM symm. tri. / buy on upside brkout on increased volume**

RPM Intl Inc:NYS (15.3500, 15.6900, 15.3000, 15.5100 +0.1600)



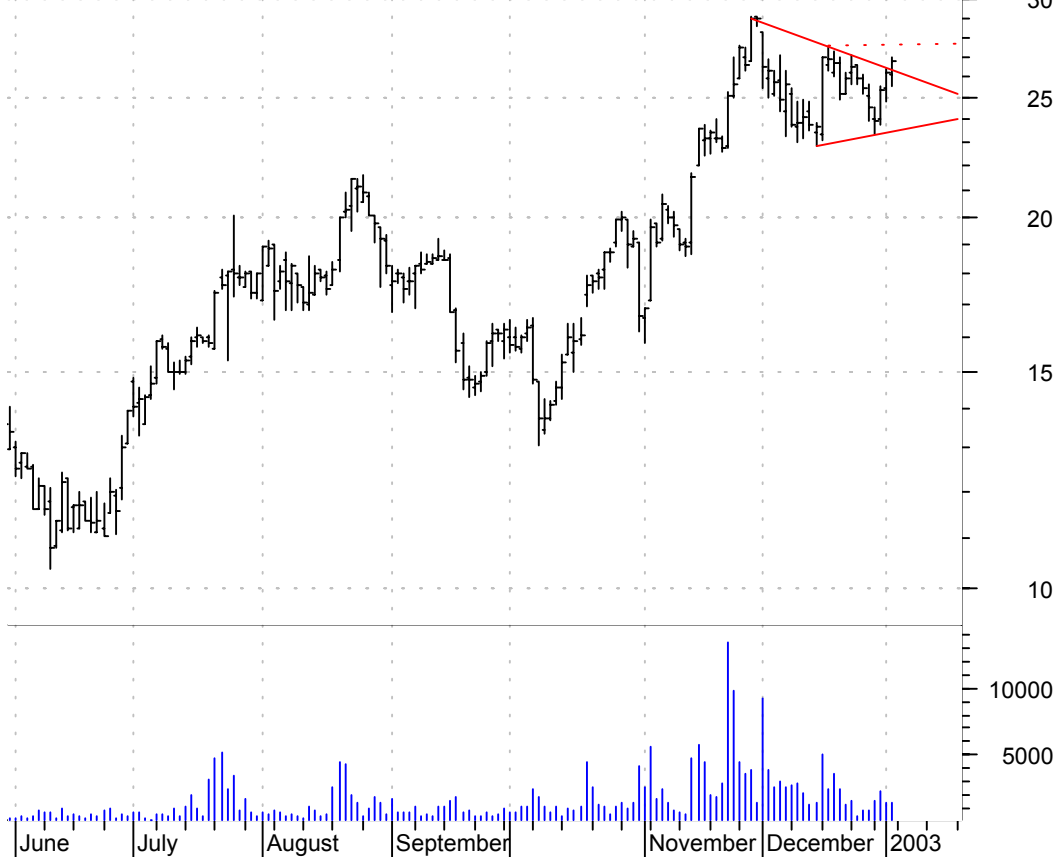
**SCIO symm. tri. / buy on upside brkout on increased volume**

Scios Inc:OTC (33.6100, 33.8200, 33.0000, 33.4300 -0.0400)



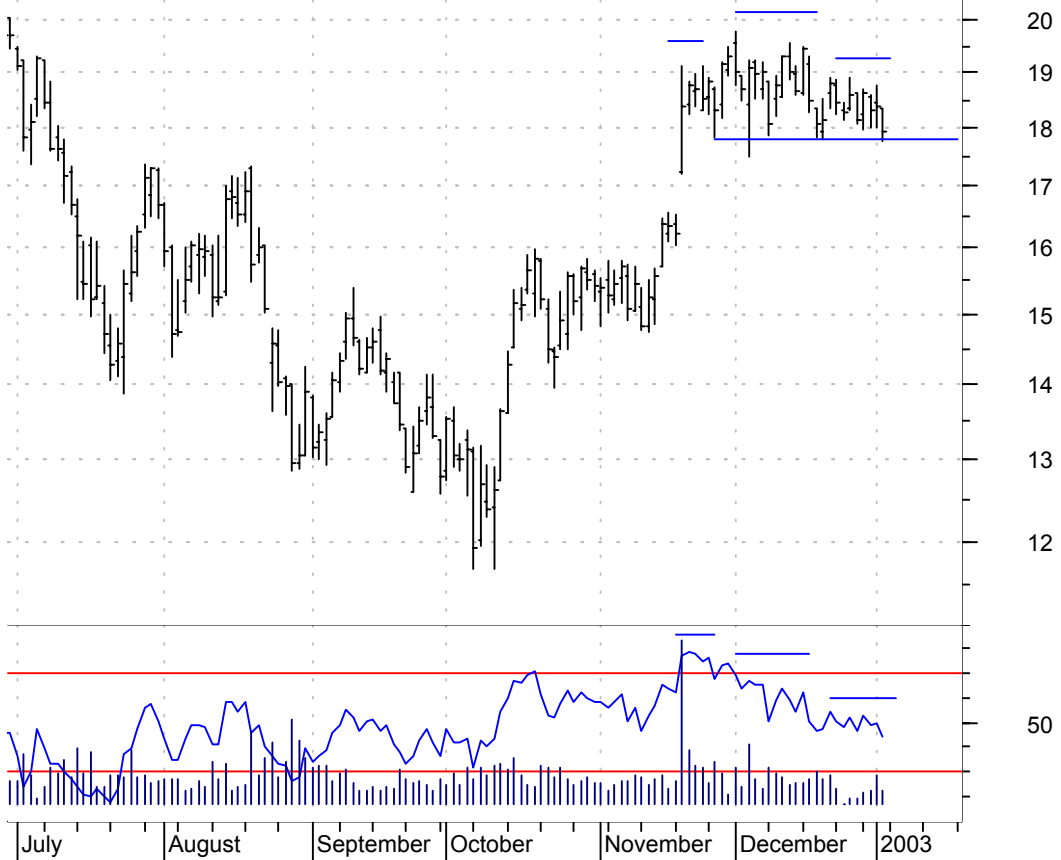
**SFNT symm. tri. brkout / buy on upside brkout thru dotted red line on increased volume**

SafeNet Inc:OTC (26.1000, 27.0000, 25.5500, 26.7600 +0.5600)



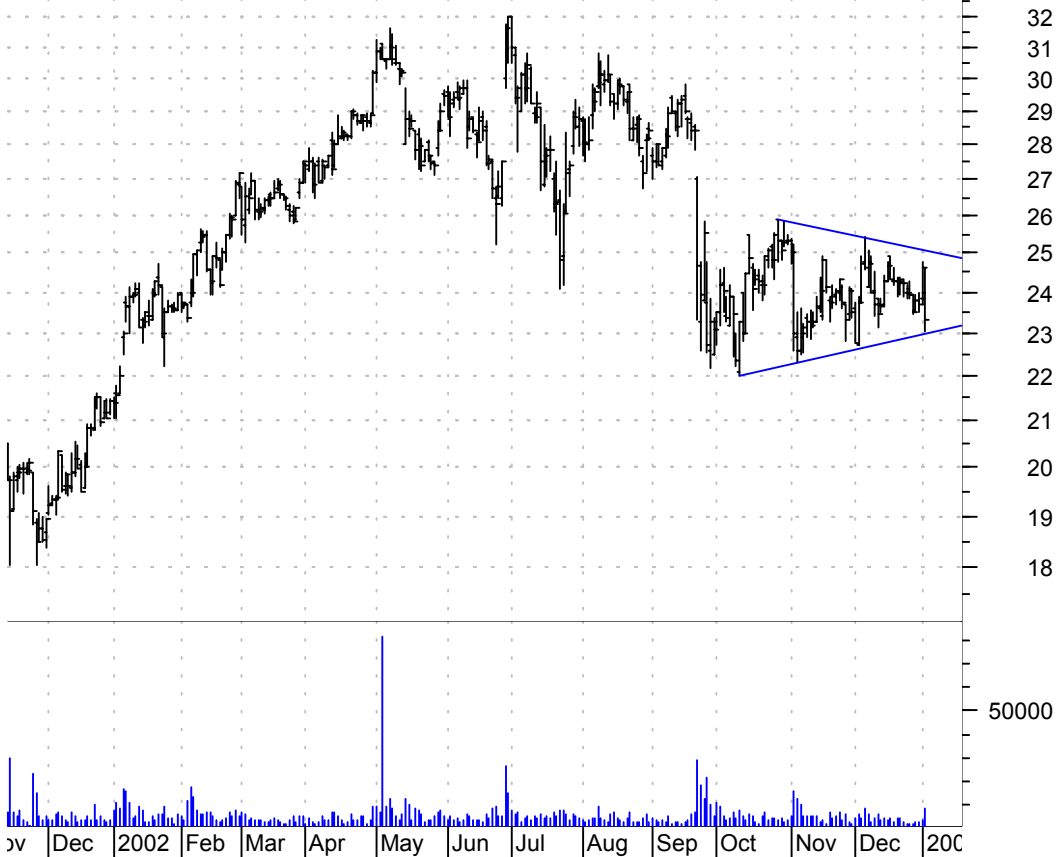
**SPLS h. & sh. / sell on downside brkout on increased volume**

Staples Inc:OTC (18.3500, 18.3500, 17.7700, 17.9300 -0.4600)



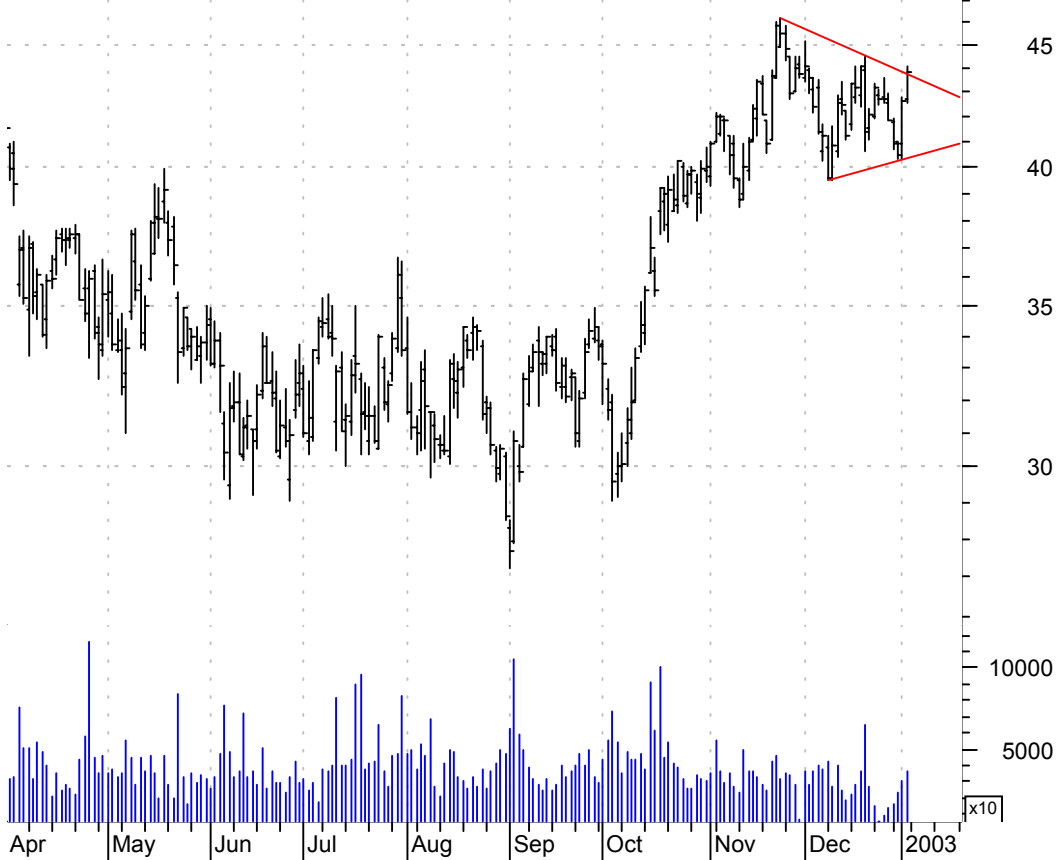
**STZ symm. tri. / sell on downside brkout on larger than normal volume**

Constellation Br (24.0000, 24.6300, 23.0300, 23.3000 -1.3300)



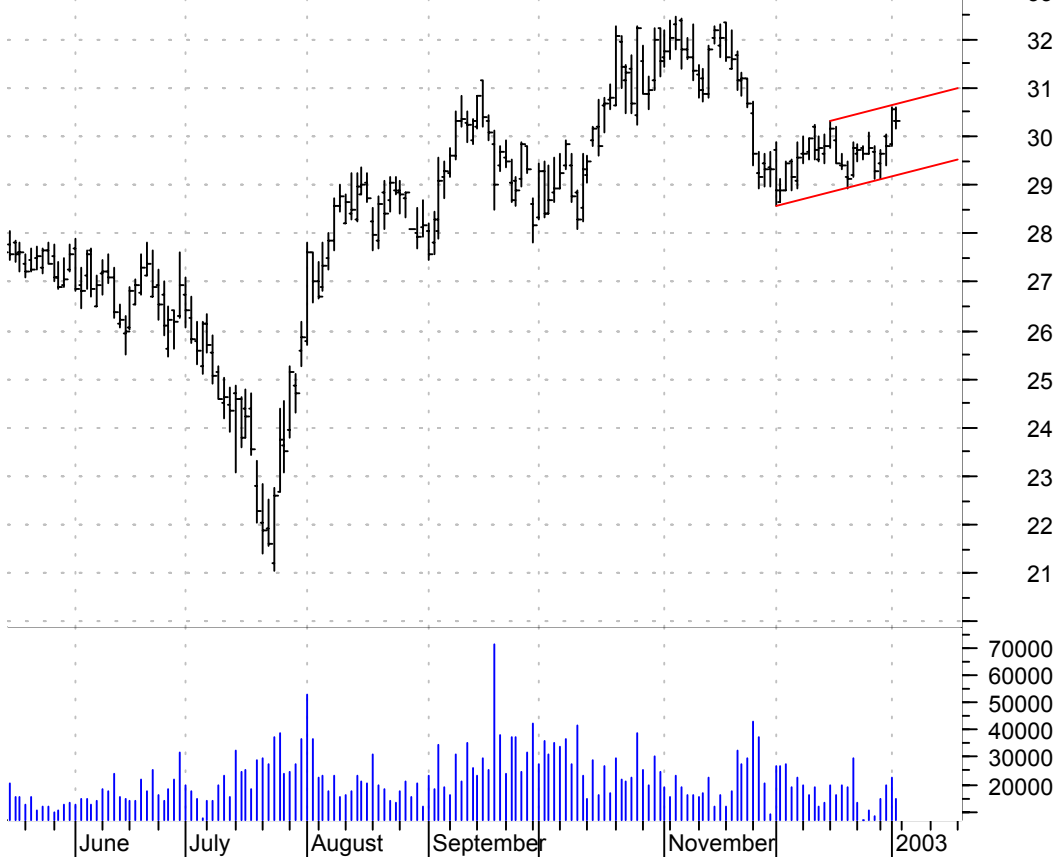
**SYMC symm. tri. brkout / buy and use a \$1 pull-back into the pattern as your failure point**

Symantec Cp:OTC (42.7300, 44.0800, 42.5500, 43.8500 +1.1700)



**SYU bearish flagging / sell on downside brkout on increased volume**

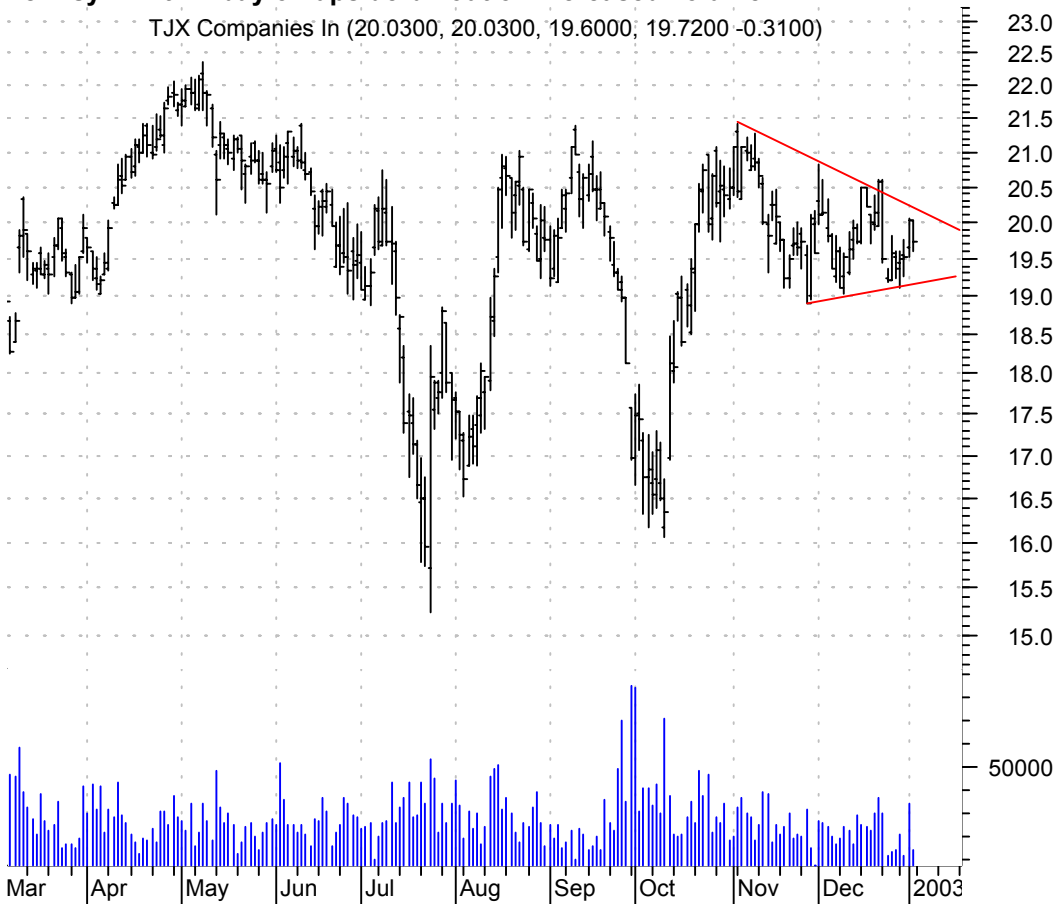
Sysco Corp:NYSE (30.3000, 30.6000, 30.1500, 30.3100 -0.2500)





**TJX symm. tri. / buy on upside breakout on increased volume**

TJX Companies Inc (20.0300, 20.0300, 19.6000, 19.7200 -0.3100)



**USON bullish flagging / buy on upside breakout on increased volume**

US Oncology Inc: (8.8500, 8.8800, 8.5900, 8.6200 -0.2100)



**WGO bear pennant / sell on downside brkout on increased volume**

Winnebago Inds I (41.1000, 41.5800, 40.4500, 40.7400 -0.3300)



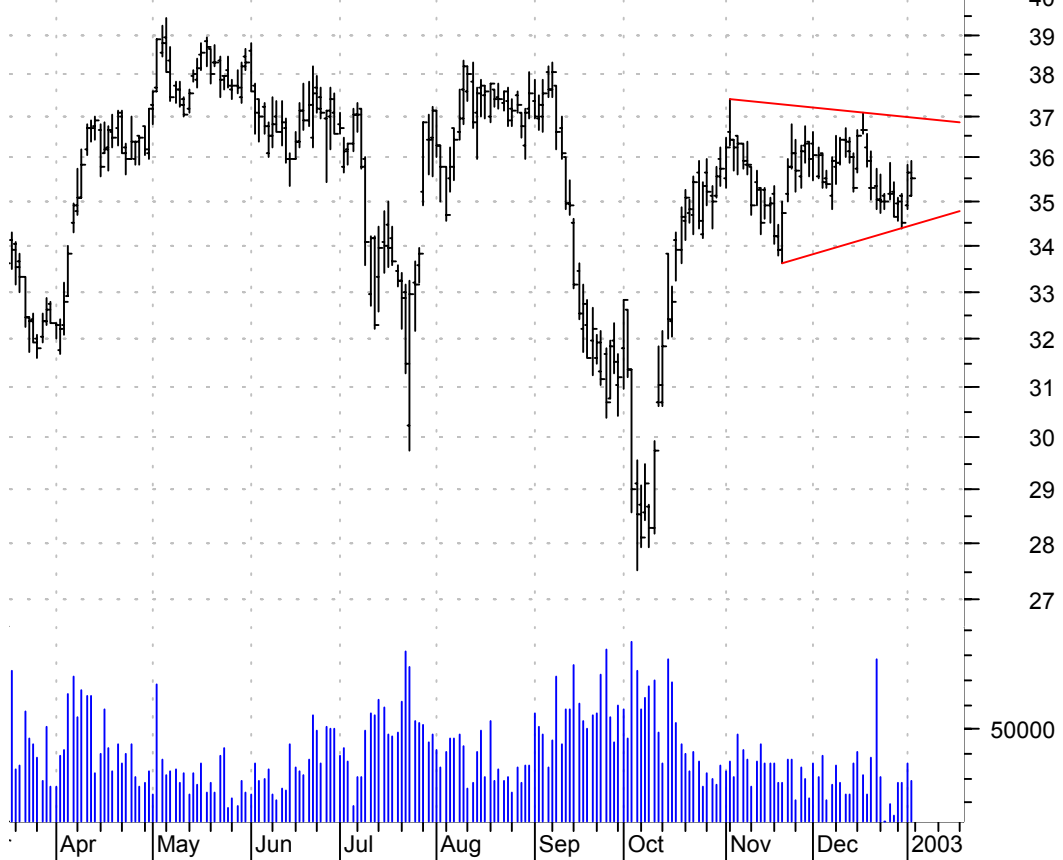
**WHR symm. tri. brkout / buy on upside brkout thru red dotted line on increased volume**

Whirlpool:NYSE (53.6000, 53.8600, 52.7900, 53.2500 -0.9800)



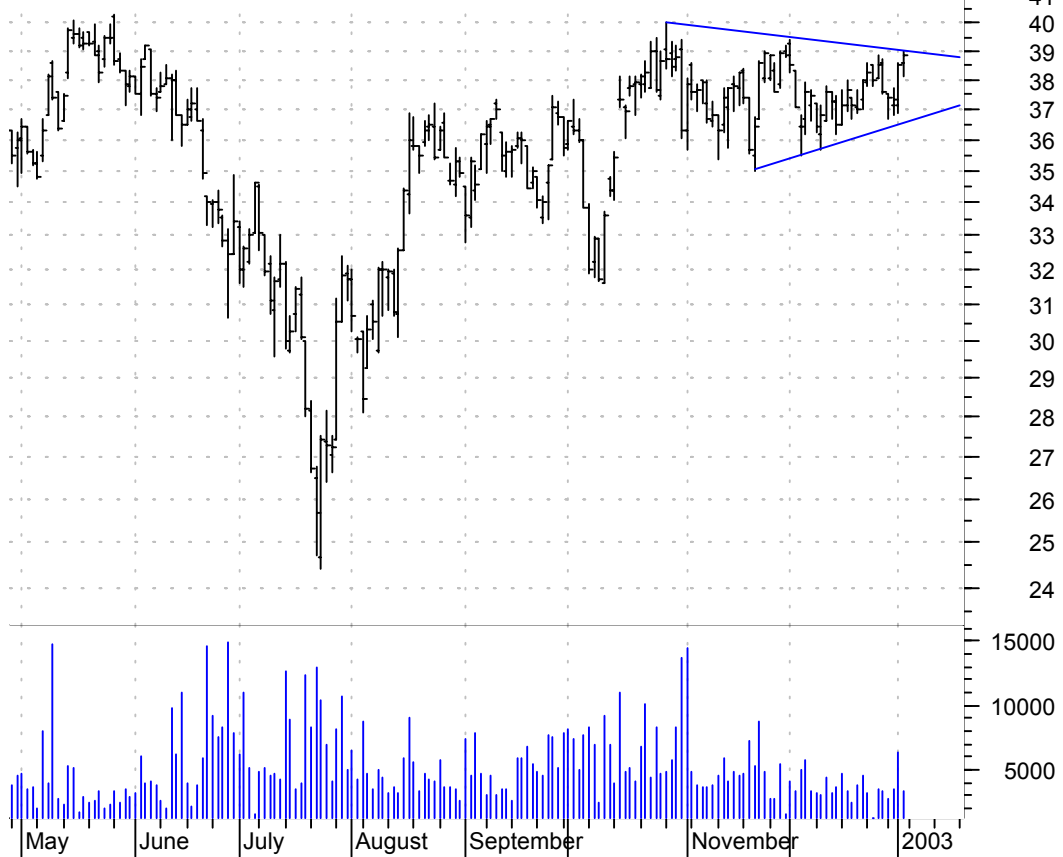
**WM symm. tri. / buy on upside brkout on increased volume**

Washington Mutua (35.1000, 35.9100, 35.1000, 35.5000 -0.1500)



**WON symm. tri. / buy on upside brkout on increased volume**

Westwood One Inc (38.6000, 39.0000, 38.1000, 38.8700 +0.3700)



**chartpatterns.com**  
Chart Pattern Analysis for Timing the Markets

[KMatras@aol.com](mailto:KMatras@aol.com)