

**AGIL inv. h. & sh. / buy on upside brkout on increased volume**

AGILE SOFTWARE:O (6.6600, 6.8900, 6.5100, 6.6100 -0.0600)



**APOL symm. tri. / buy on upside brkout on increased volume**

Apollo Group Inc (50.6700, 51.0400, 49.6500, 49.8000 -0.7200)



**AVCT bear pennant / sell on downside brkout on increased volume**

Avocent Corp:OTC (24.3200, 24.3200, 23.6500, 24.0000 -0.2300)



**BKS bullish pennant / buy on upside brkout on increased volume**

Barnes & Noble I (19.0000, 19.2000, 18.7400, 18.9700 -0.0100)



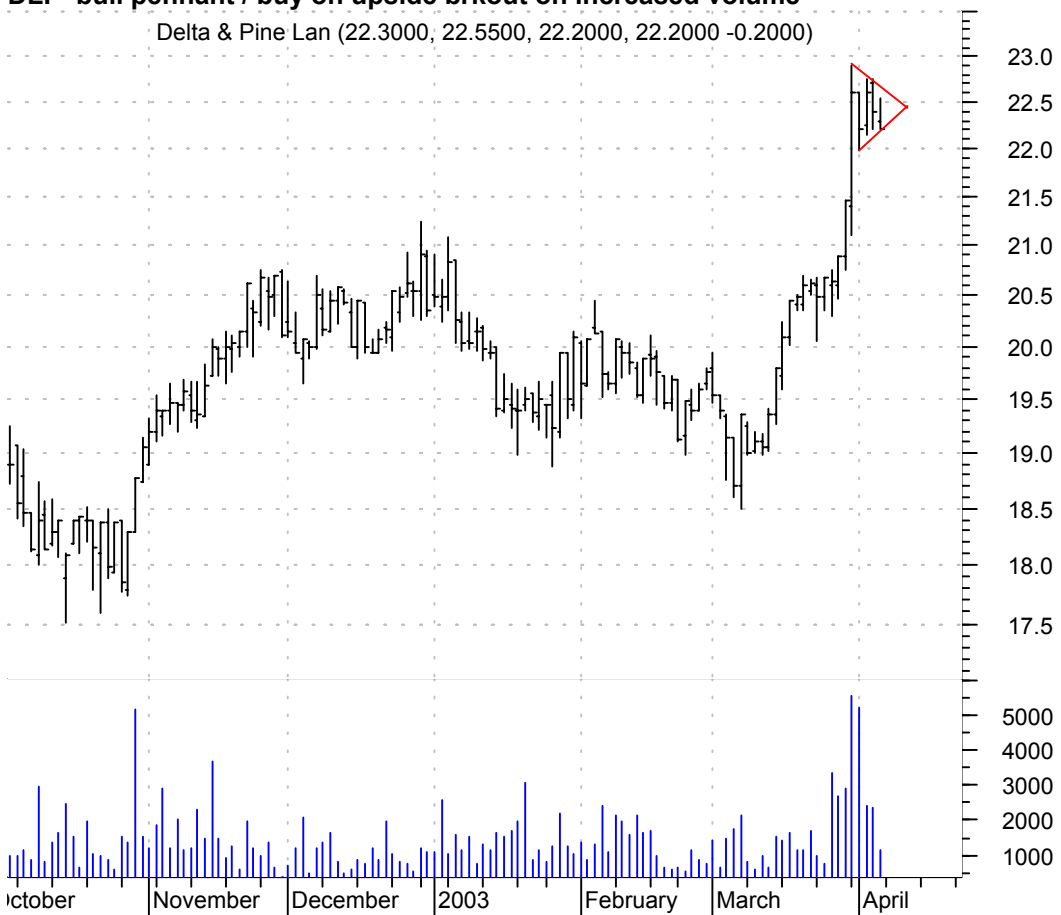
**CKFR symm. tri. / buy on upside brkout on increased volume**

Checkfree Corp:O (22.7400, 22.8800, 21.6800, 22.0900 -0.4400)



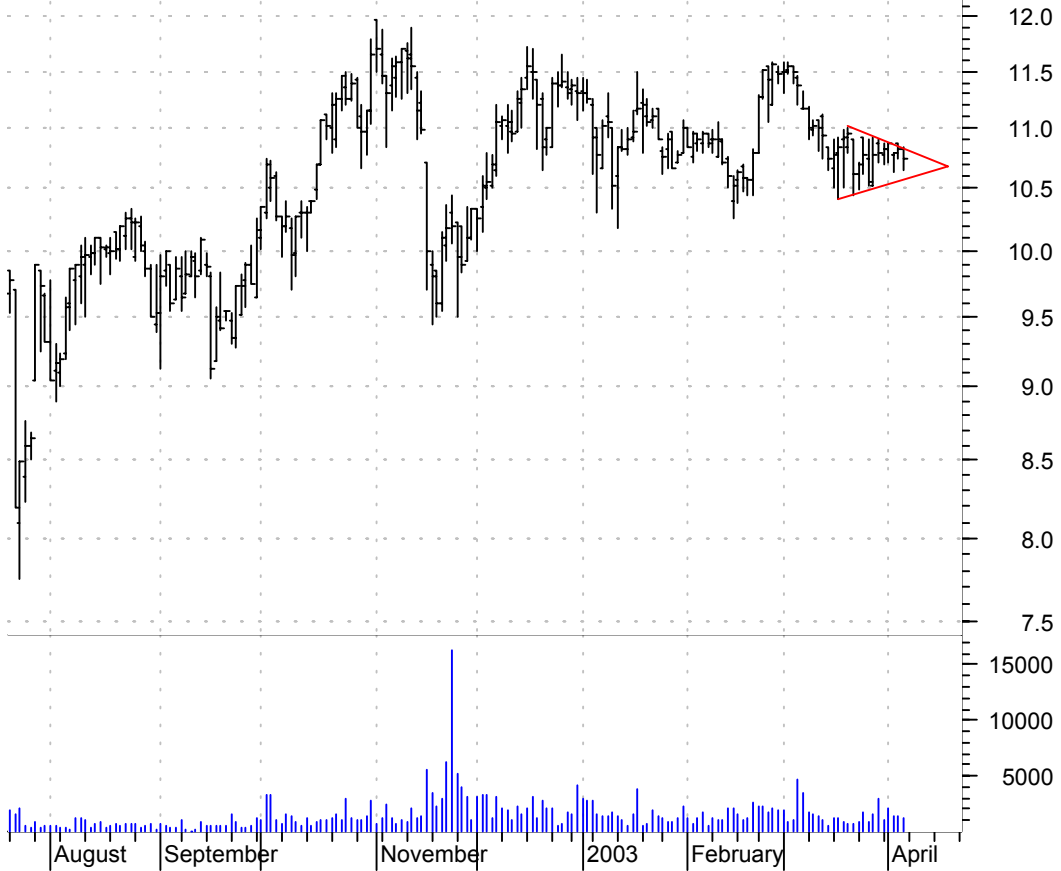
**DLP bull pennant / buy on upside brkout on increased volume**

Delta & Pine Lan (22.3000, 22.5500, 22.2000, 22.2000 -0.2000)



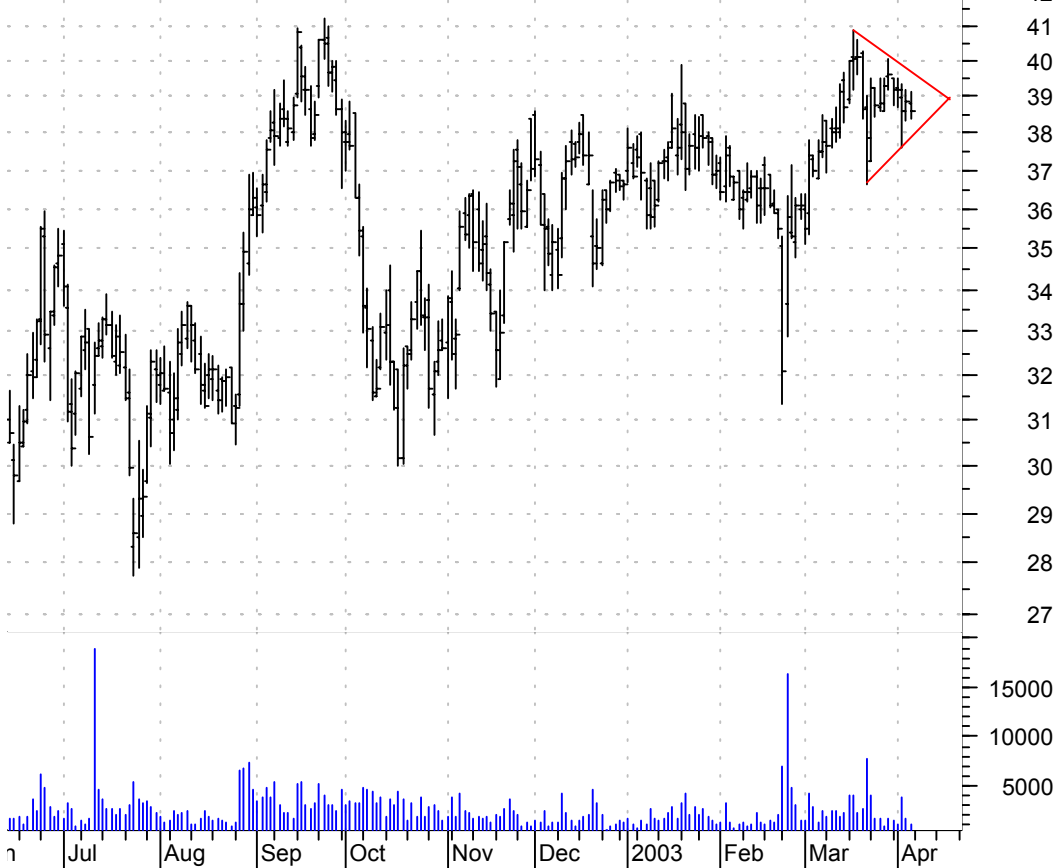
**DNR symm. tri. / sell on downside brkout on increased volume**

Denbury Resource (10.8300, 10.8400, 10.6500, 10.7500 -0.0800)



**EASI symm. tri. / buy on upside brkout on increased volume**

Engineered Suppo (38.8200, 39.1200, 38.3700, 38.6000 -0.2800)



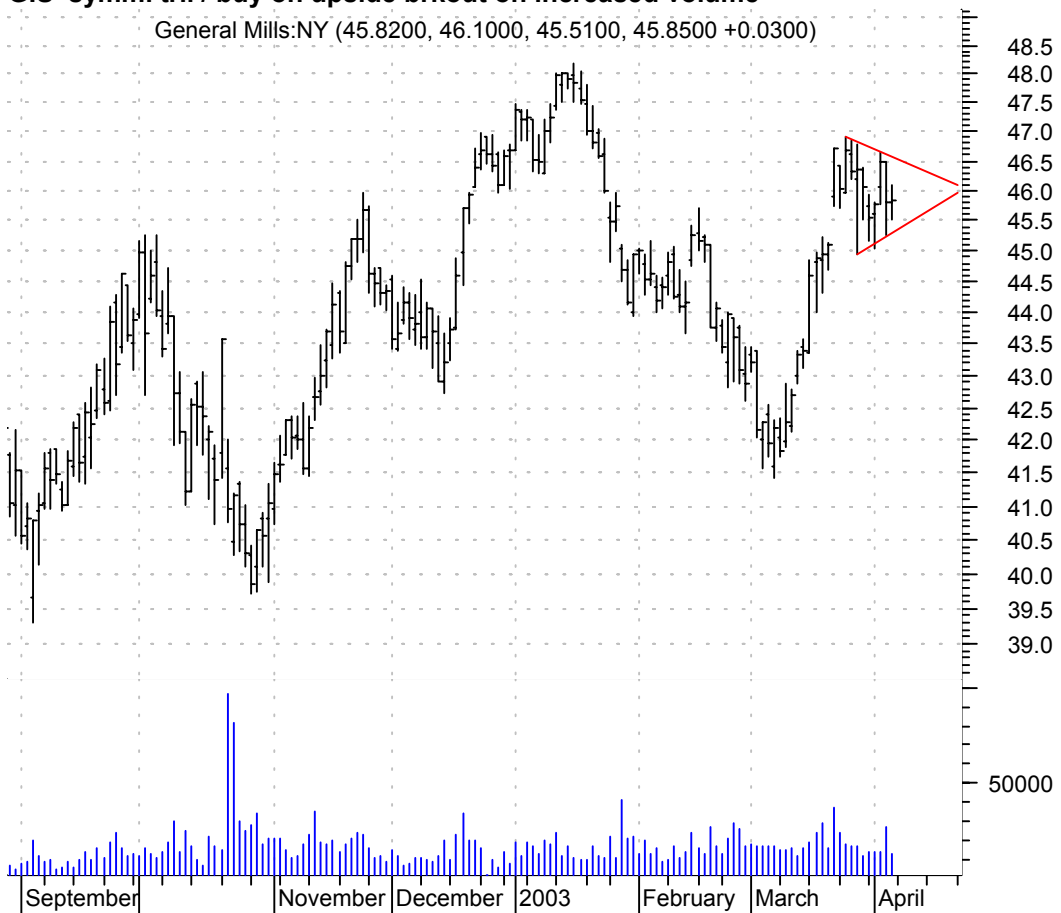
**GDT symm. tri. / buy on upside breakout on increased volume**

Guidant Corp:NYS (36.5000, 36.5400, 35.7700, 36.2800 -0.2100)



**GIS symm. tri. / buy on upside breakout on increased volume**

General Mills:NY (45.8200, 46.1000, 45.5100, 45.8500 +0.0300)



**GTK symm. tri. / buy on upside brkout on increased volume**

GTech Holdings C (33.0500, 33.3400, 32.2000, 32.3700 -0.6500)



**MIMS asc. tri. / buy on upside brkout on increased volume**

MIM Corp:OTC (7.6500, 7.6800, 7.3500, 7.3900 -0.1800)



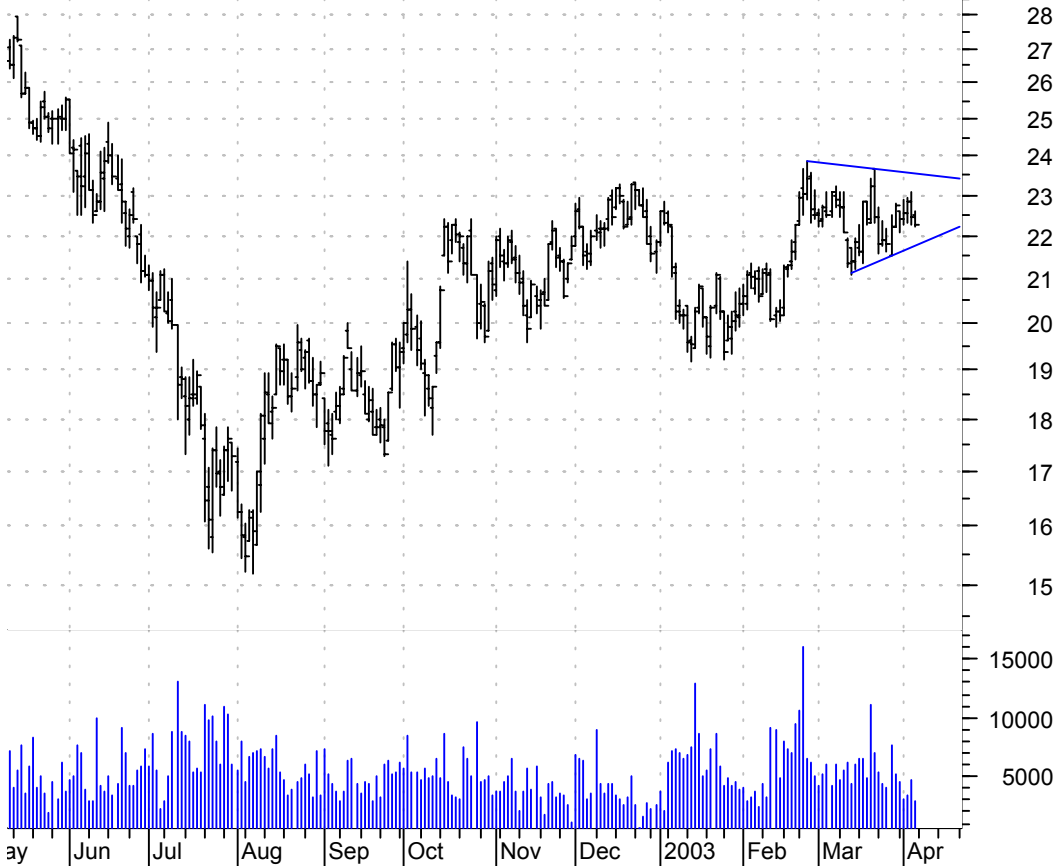
**MYK symm. tri. / buy on upside brkout on increased volume**

Mykrolis Corp:NY (8.3100, 8.3500, 7.7700, 7.8000 -0.5100)



**NOI symm. tri. / buy on upside brkout on increased volume**

National-Oilwell (22.5100, 22.6100, 22.2000, 22.2500 -0.2100)



**NOVN asc. tri. / buy on upside breakout on increased volume**

Noven Pharmaceut (14.3200, 14.6300, 14.2500, 14.4100 +0.0600)



**OTEX asc. tri. / buy on upside breakout on increased volume**

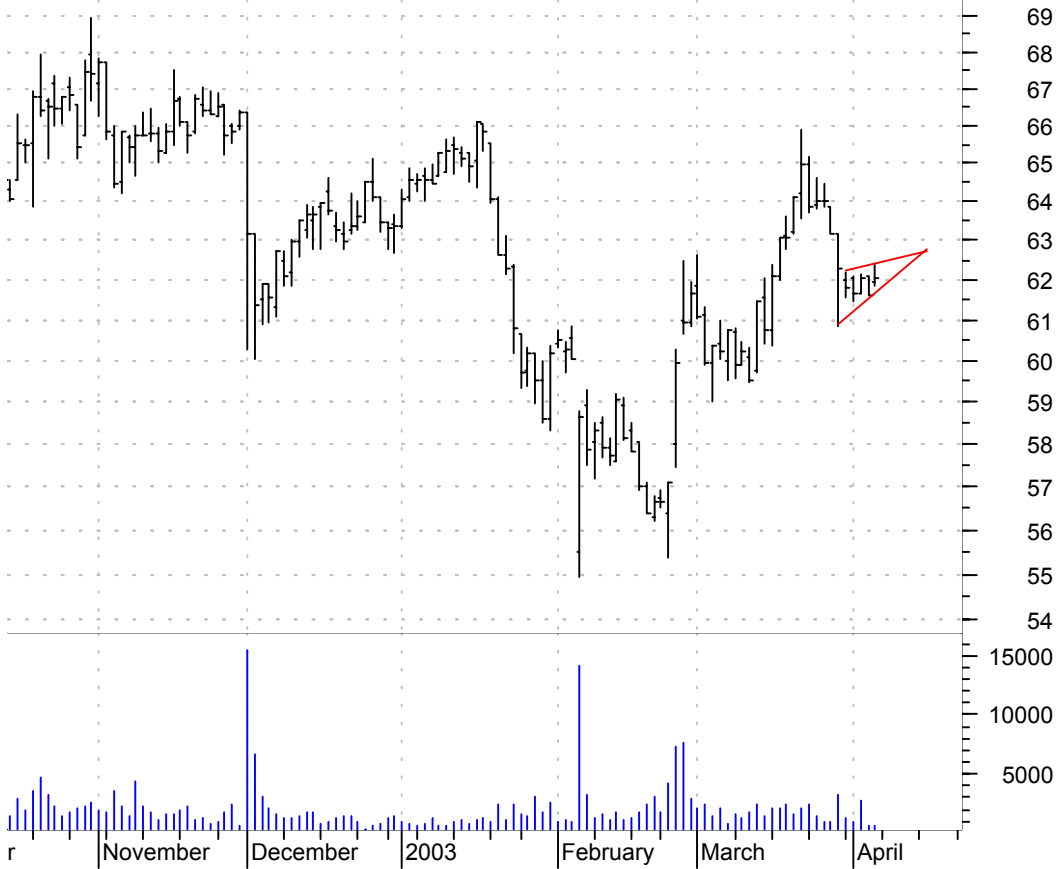
Open Text Corp:O (29.0000, 29.0000, 28.1700, 28.3500 -0.4500)





**POT rising wedge / sell on downside brkout on increased volume**

Potash Cp:NYSE (61.9500, 62.3600, 61.8600, 62.0500 +0.4400)



**PPL symm. tri. / buy on upside brkout on increased volume**

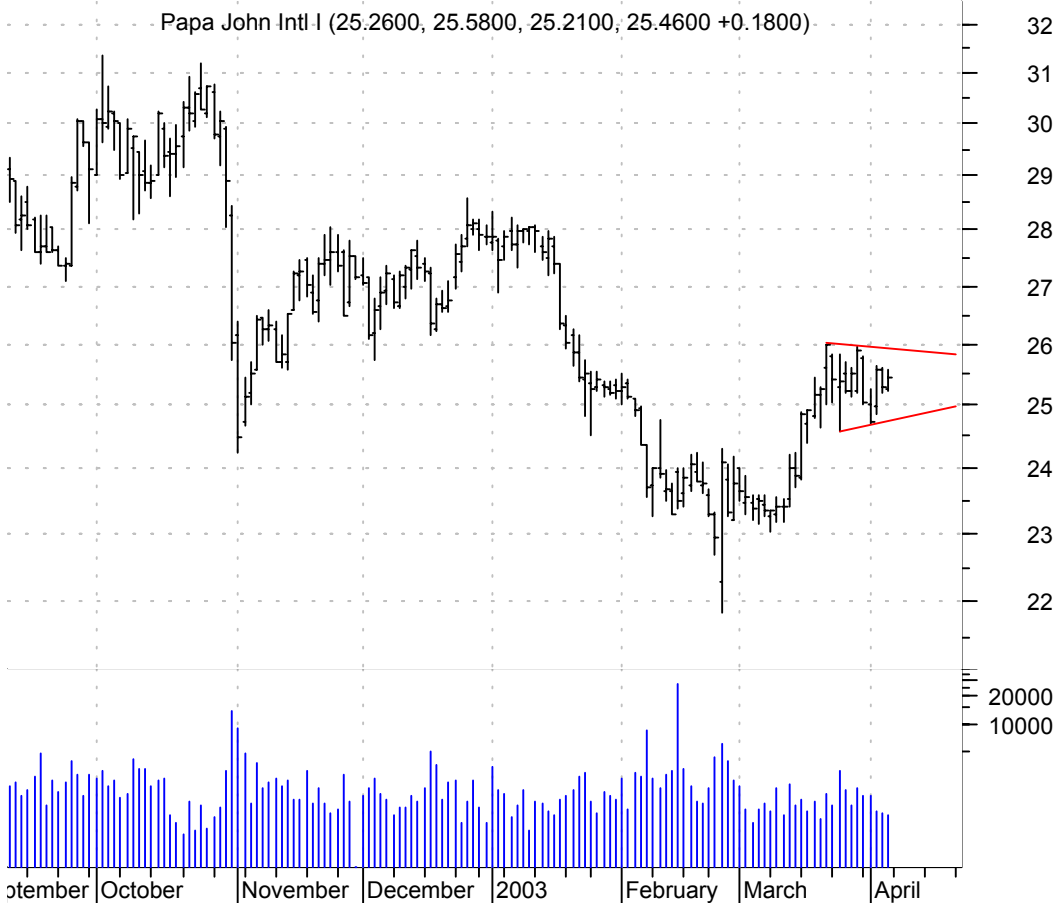
PP&L Cp:NYSE (35.0500, 36.0000, 35.0400, 35.9900 +0.8900)



**PRA symm. tri. / buy on upside brkout thru dotted red line on increased volume**

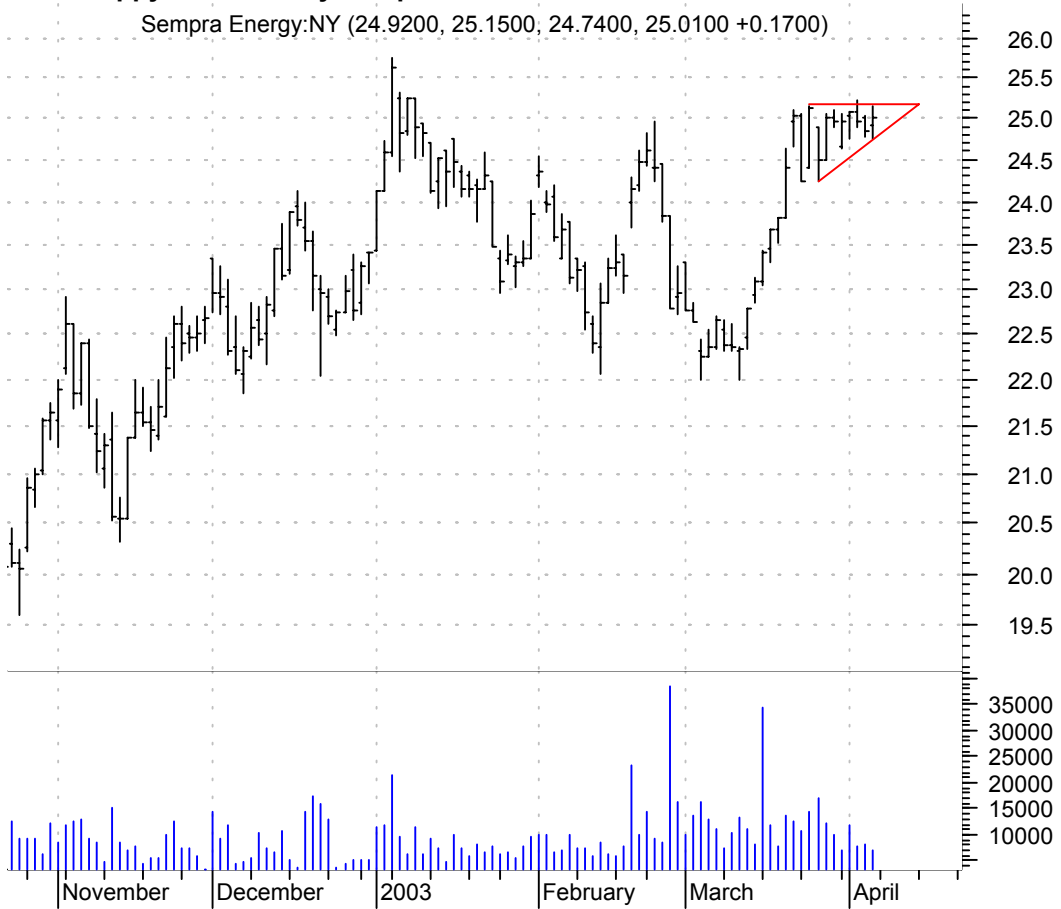


**PZZA symm. tri. / buy on upside brkout on increased volume**



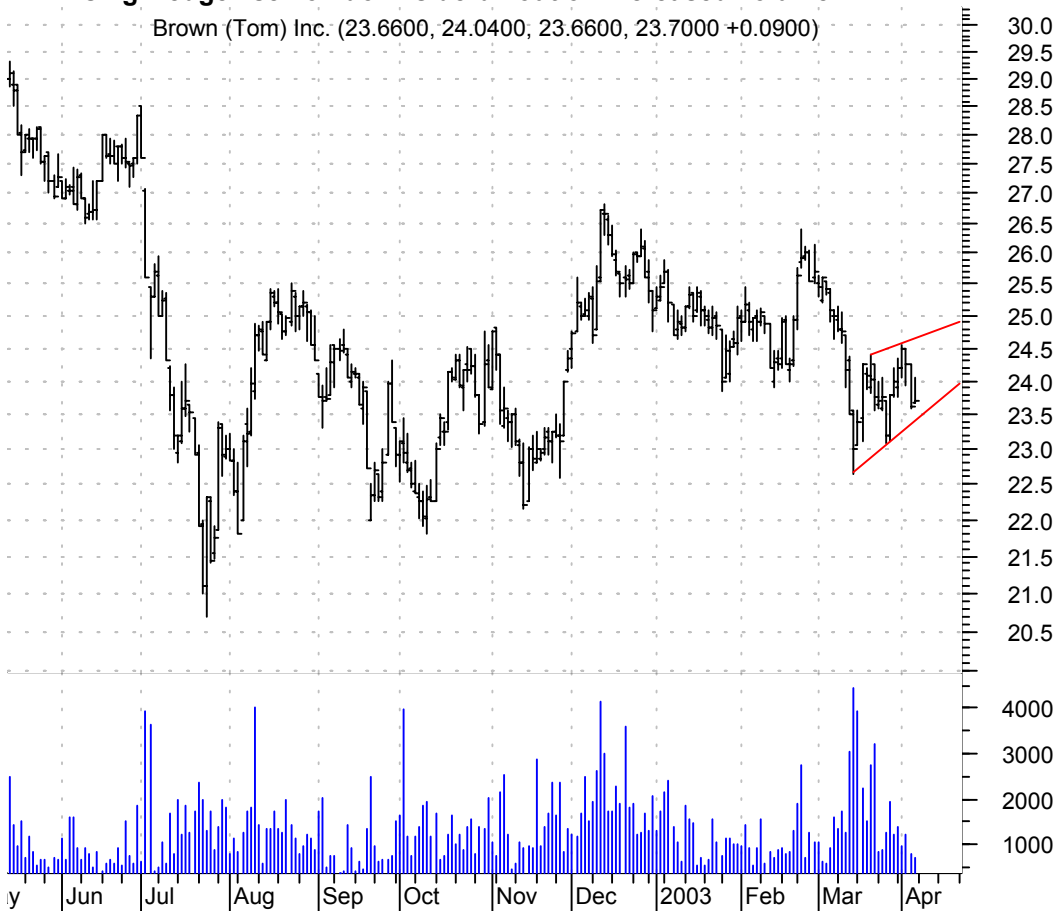
**SRE sloppy asc. tri. / buy on upside breakout on increased volume**

Sempra Energy:NY (24.9200, 25.1500, 24.7400, 25.0100 +0.1700)



**TBI rising wedge / sell on downside breakout on increased volume**

Brown (Tom) Inc. (23.6600, 24.0400; 23.6600, 23.7000 +0.0900)



**TFS falling wedge preceded by 'pole-like' move / buy on upside brkout on increased volume**



**TK asc. tri. / buy on upside brkout on increased volume**



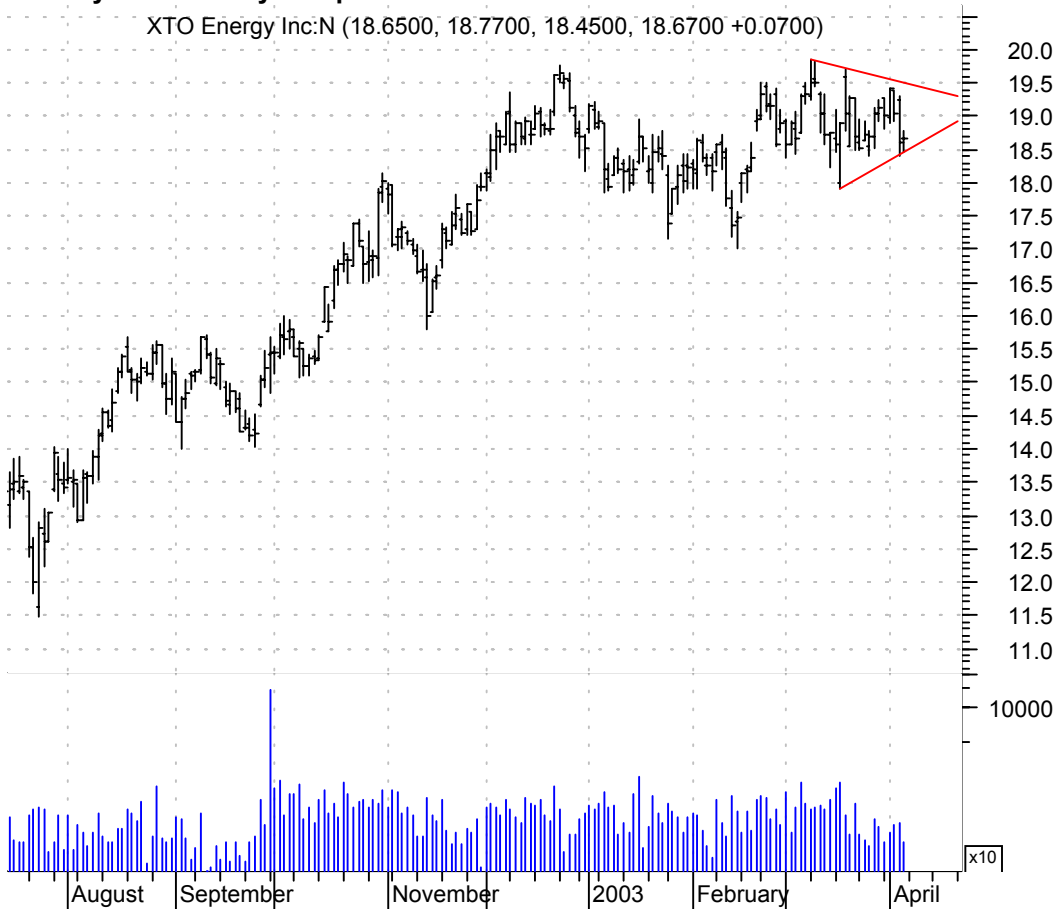
**UOPX symm. tri. / buy on upside brkout on increased volume**

APOLLO GRP-UNIV (43.1800, 44.1100, 42.6000, 43.0000 -0.0500)



**XTO symm. tri. / buy on upside brkout on increased volume**

XTO Energy Inc:N (18.6500, 18.7700, 18.4500, 18.6700 +0.0700)



**ZOLL symm. tri. / buy on upside brkout on increased volume**

Zoll Medical Cor (39.9700, 39.9800, 38.8300, 39.5000 -0.5000)



**chartpatterns.com**

Chart Pattern Analysis for Timing the Markets

[KMatras@aol.com](mailto:KMatras@aol.com)