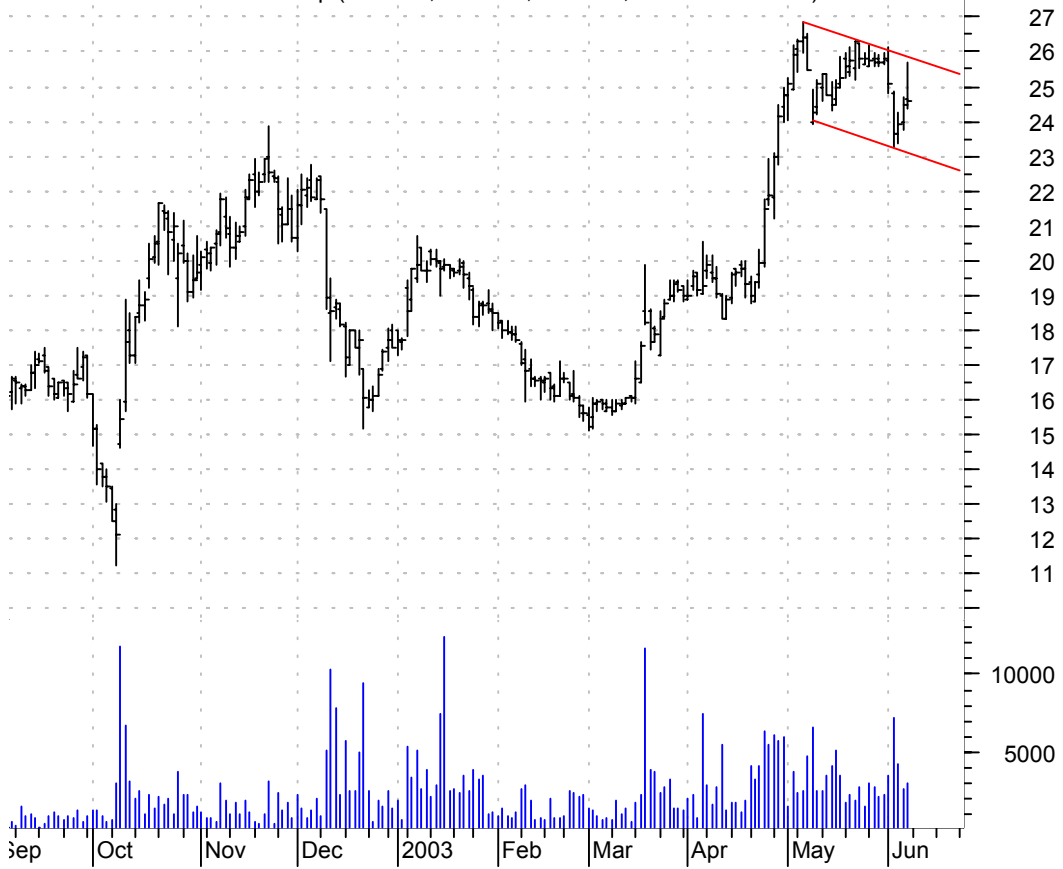


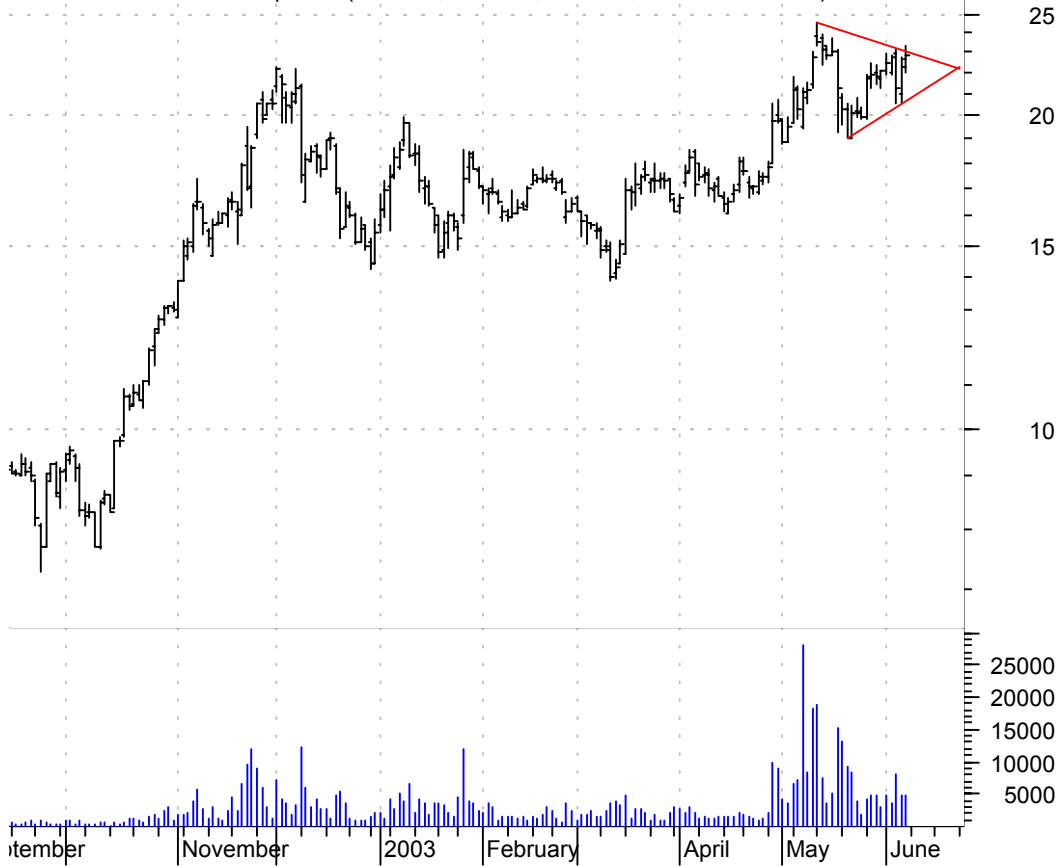
AMHC bullish flag / buy on upside brkout on increased volume

Amer Healthcorp (24.6500, 25.7000, 24.3400, 24.5700 +0.0700)



ARTI symm. tri. / buy on upside brkout on increased volume

Artisan Componen (22.6300, 23.3600, 22.0000, 22.8300 +0.5800)



BKUNA symm. tri. / sell on downside brkout thru dotted red line on larger than normal volume

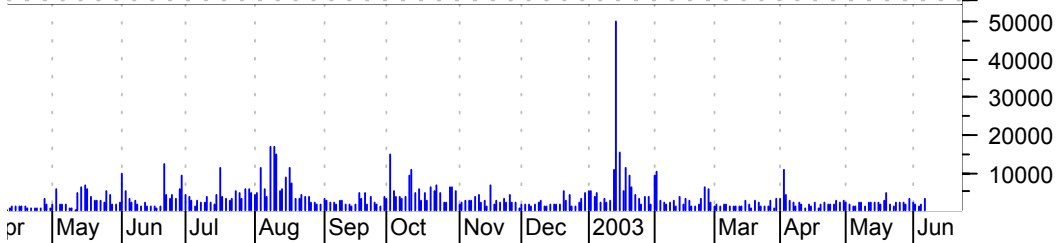
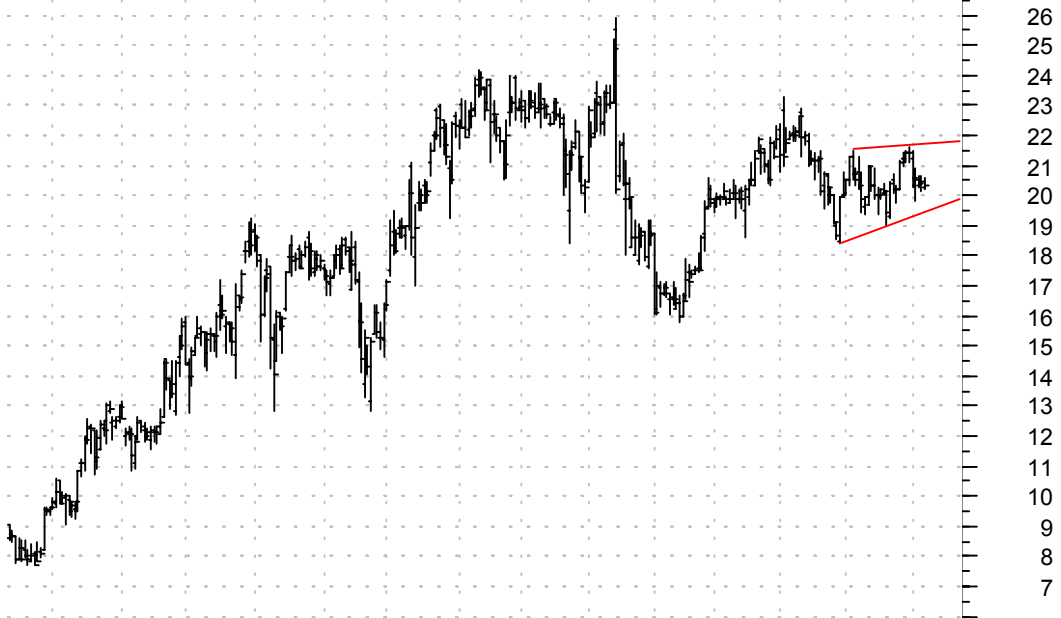


BLL symm. tri. preceded by 'pole-like' move / sell on downside brkout on increased volume



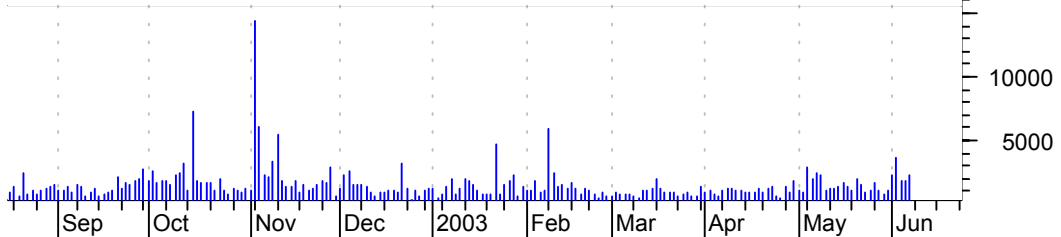
BLUD rising wedge / sell on downside brkout on larger than normal volume

Immuco Inc:OTC (20.2900, 20.6000, 20.2000, 20.3200 -0.1200)



CHD symm. tri. / buy on upside brkout on increased volume

Church & Dwight (32.2100, 32.2700, 31.5500, 31.7000 -0.4300)



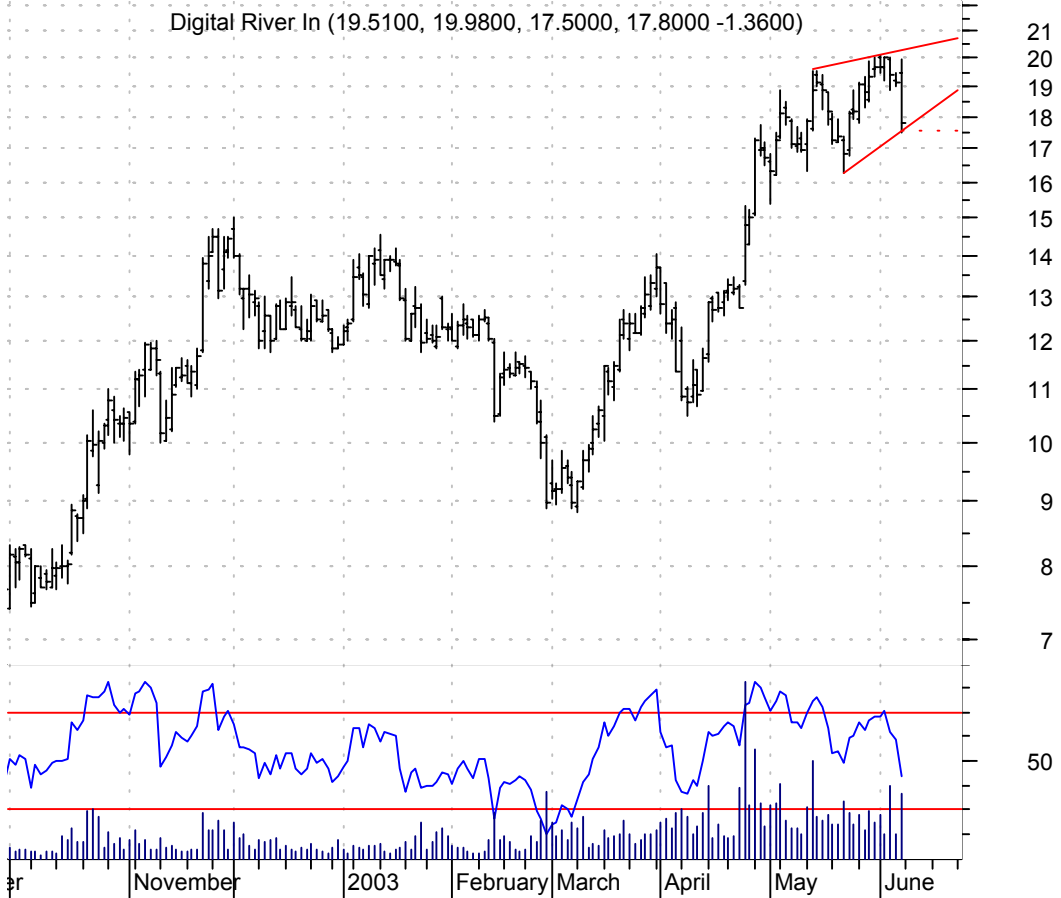
DITC symm. tri. / buy on upside breakout thru dotted red line on larger than normal volume

Ditech Communica (4.5600, 4.8000, 4.4500, 4.5000 -0.0600)



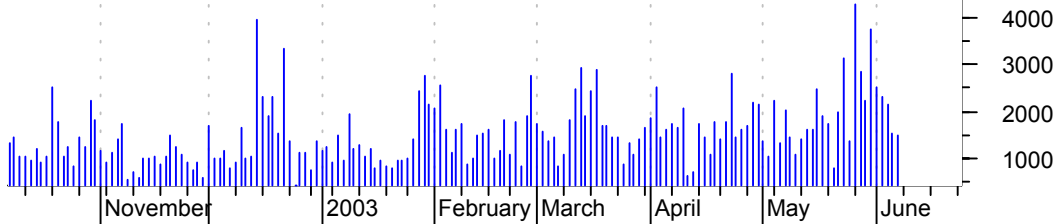
DRIV rising wedge / sell on downside breakout thru dotted red line on larger than normal volume

Digital River In (19.5100, 19.9800, 17.5000, 17.8000 -1.3600)



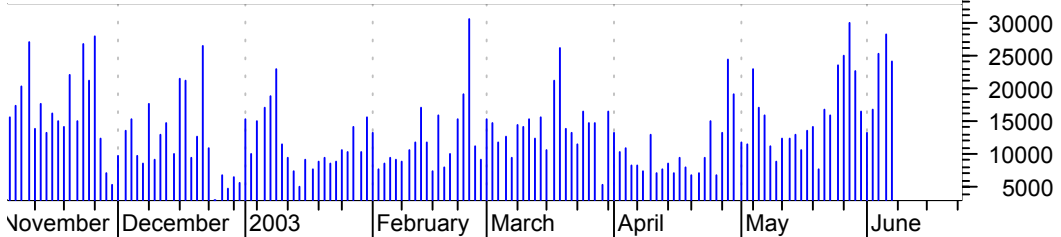
EGN asc. tri. / buy on upside brkout on increased volume

Energen:NYSE (33.1500, 33.2400, 32.9400, 33.0000 -0.1000)



EIX asc. tri. / buy on upside brkout on larger than normal volume

Edison Intl:NYSE (16.1800, 16.5200, 16.0200, 16.1200 +0.0400)



GIVN falling wedge / buy on upside brkout on increased volume

GIVEN IMAGING LT (8.3500, 8.3500, 8.1600, 8.1600 -0.0200)



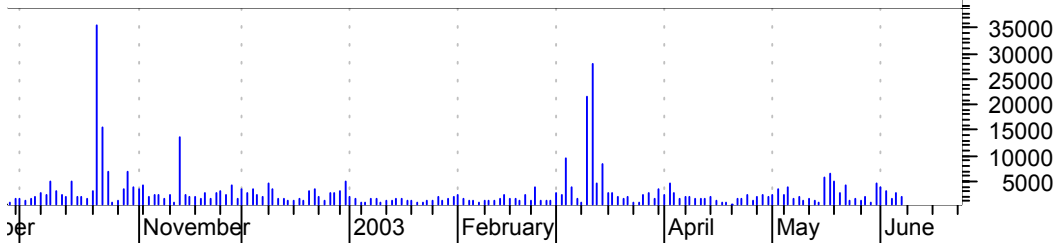
GNCMA symm. tri. brkout / buy and use a pullback past \$6 as a failure point

General Communic (6.3500, 7.0100, 6.3500, 6.8500 +0.6100)



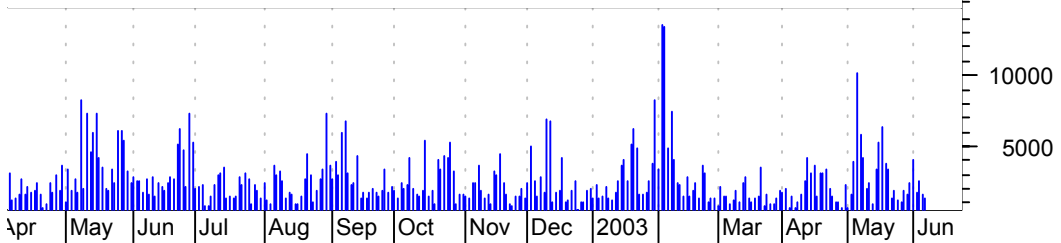
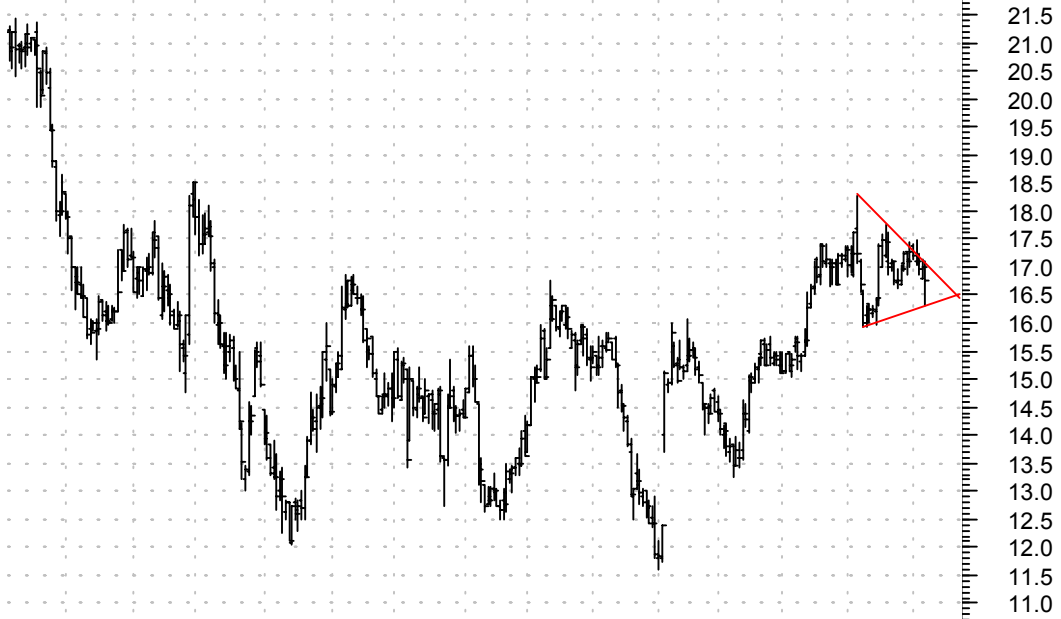
GTI asc. tri. / buy on upside brkout on increased volume

Graftech Intl:NY (6.0500, 6.1500, 5.7500, 5.8600 -0.0900)



HAIN sloppy symm. tri. / buy on upside brkout on increased volume

Hain Celestial G (17.0900, 17.1000, 16.3100, 16.7400 -0.2600)



JCOM h. & sh. / sell on downside brkout on increased volume

J2 Global Commun (35.8000, 36.7900, 33.7500, 34.3000 -1.0400)



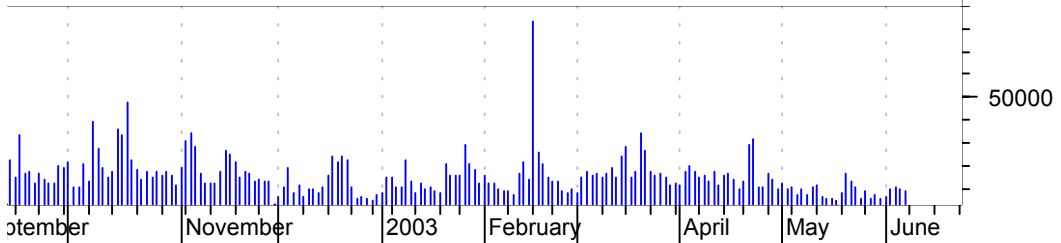
LENS symm. tri. / buy on upside brkout on increased volume

Concord Camera C (5.8600, 5.9800, 5.7600, 5.7900 -0.1800)



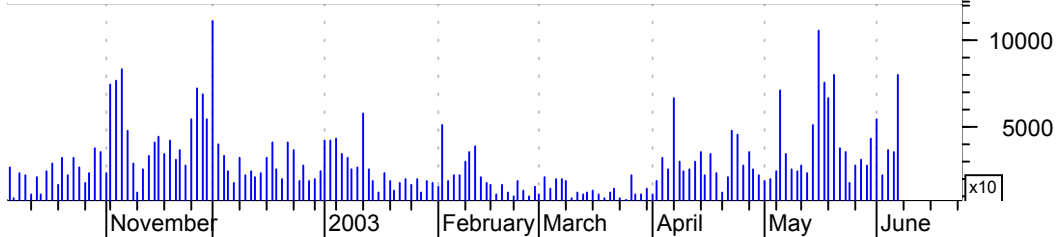
LLL symm. tri. / buy on upside brkout on increased volume

L-3 Comm Holding (43.6500, 44.4000, 43.6500, 43.8100 +0.3100)



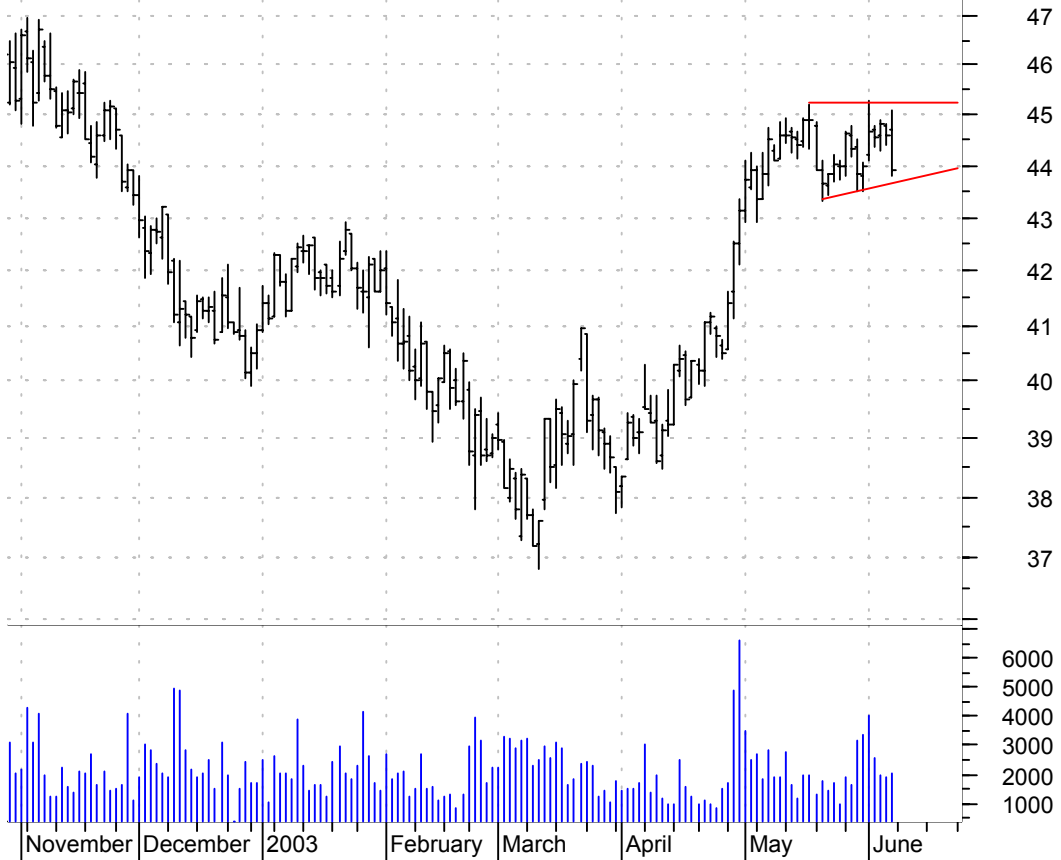
LVLT symm. tri. / buy on upside brkout on larger than normal volume

Level 3 Communic (6.8900, 6.9000, 6.4600, 6.5300 -0.2600)



MDP asc. tri. / buy on upside breakout on increased volume

Meredith Corp:NY (44.7000, 45.1000, 43.7900, 43.9000 -0.6800)



MWI asc. tri. / buy on upside breakout on increased volume

Moore Wallace In (14.0000, 14.1100, 13.7500, 13.8500 -0.1500)



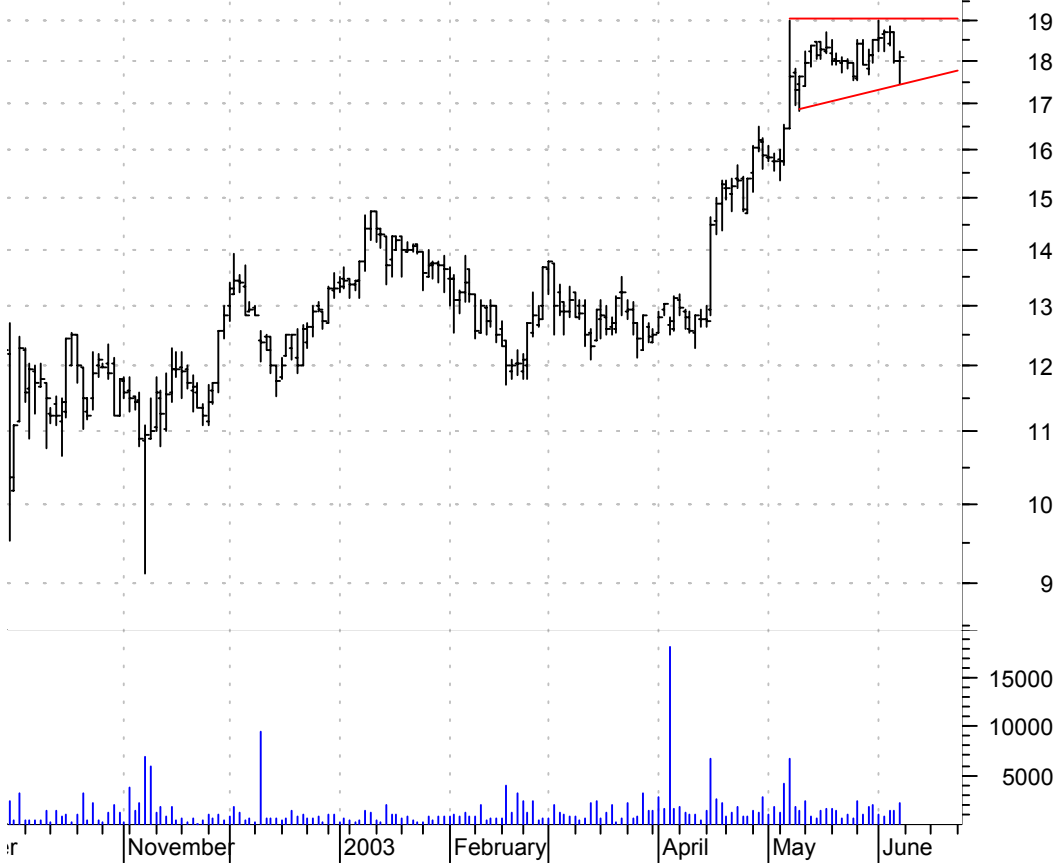
MXIM h. & s. / sell on downside brkout on decent volume

Maxim Integrated (39.0200, 40.3600, 36.6100, 36.8600 -1.6900)



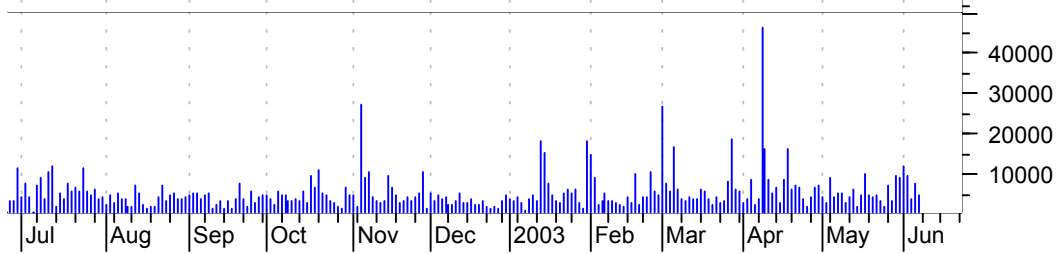
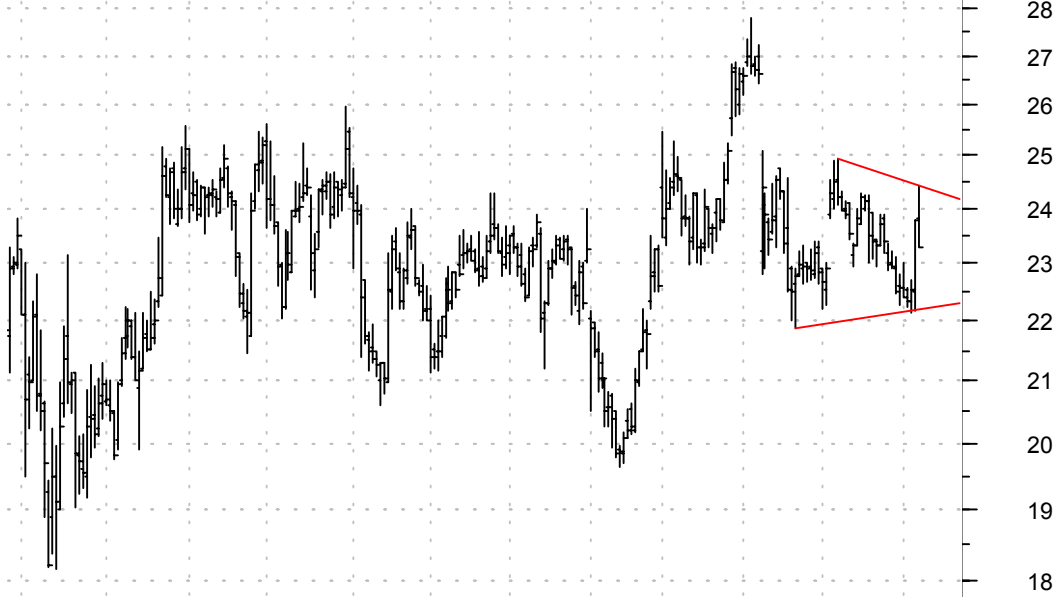
PACR asc. tri. / buy on upside brkout on increased volume

PACER INTL INC:O (18.0000, 18.2400, 17.4600, 18.1100 +0.1100)



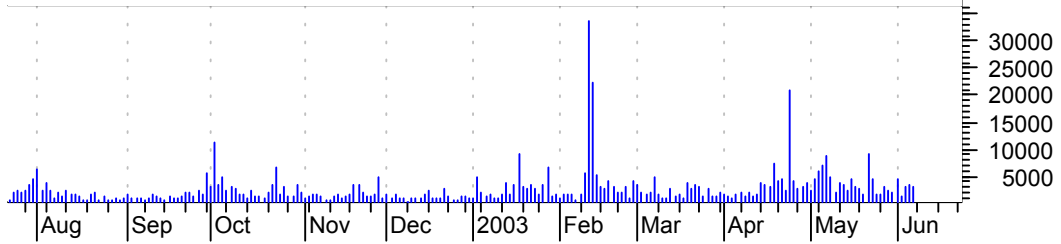
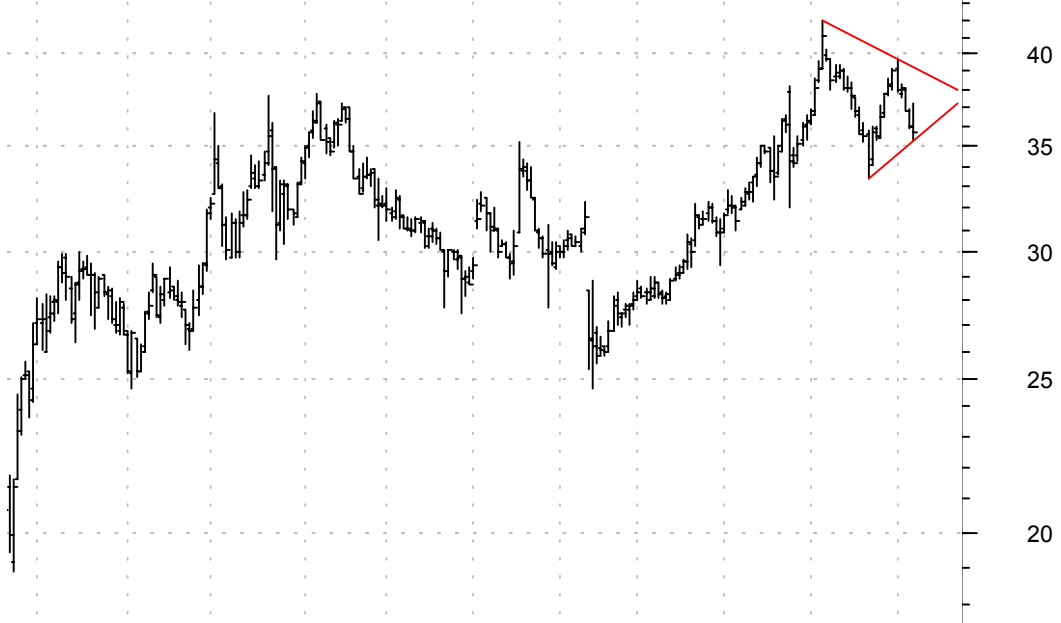
PHCC symm. tri. / sell on downside brkout on increased volume

Priority Healthc (23.8000, 24.4100, 23.3000, 23.3000 -0.4900)



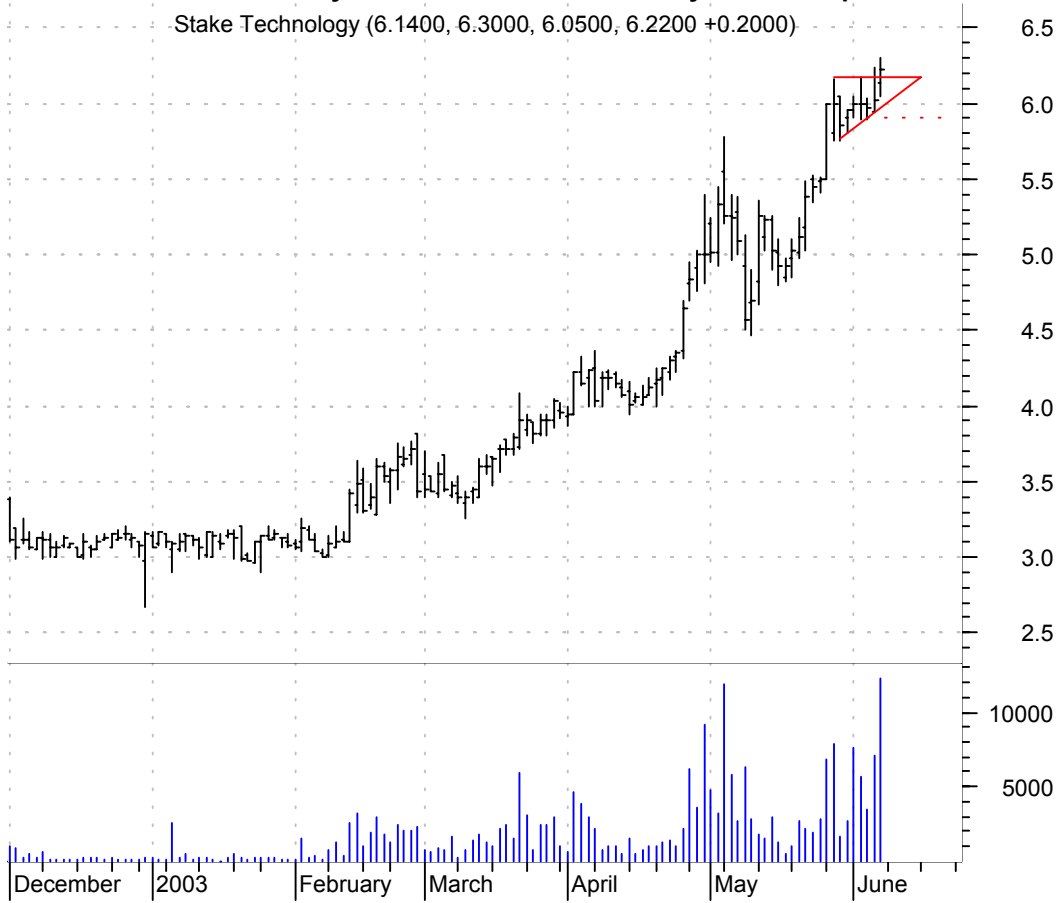
SRDX symm. tri. / buy on upside brkout on increased volume

Surmodics Inc:OT (36.0200, 37.1900, 35.2700, 35.6700 -0.3300)



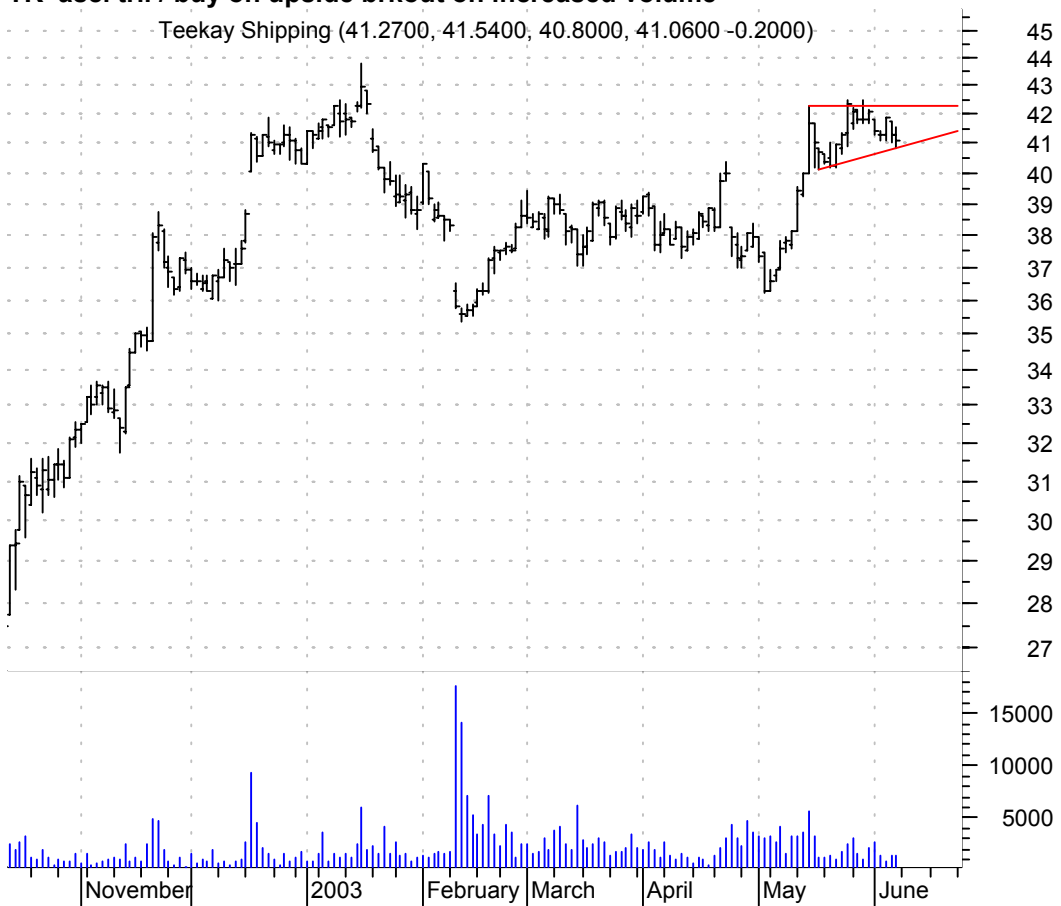
STKL asc. tri. brkout / buy and use dotted red line as your failure point

Stake Technology (6.1400, 6.3000, 6.0500, 6.2200 +0.2000)



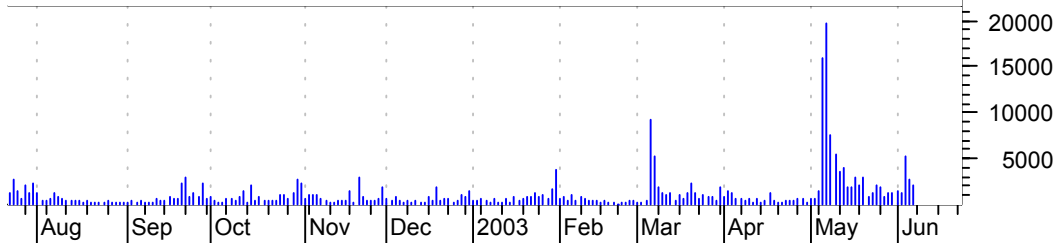
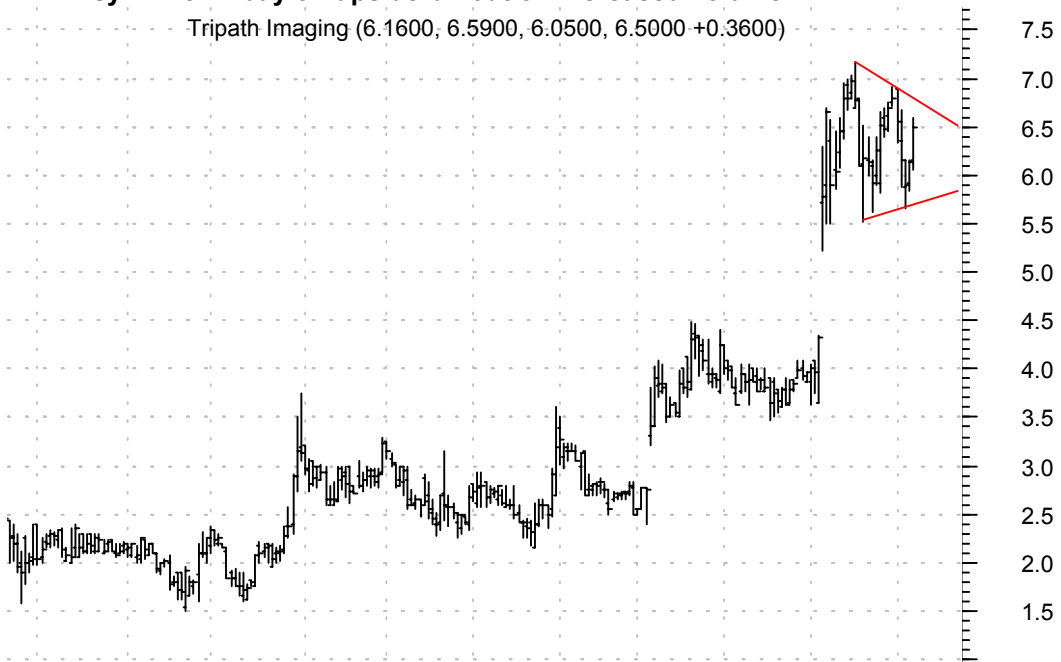
TK asc. tri. / buy on upside brkout on increased volume

Teekay Shipping (41.2700, 41.5400, 40.8000, 41.0600 -0.2000)



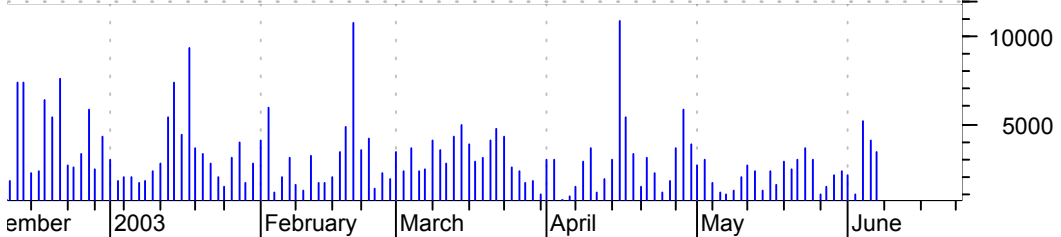
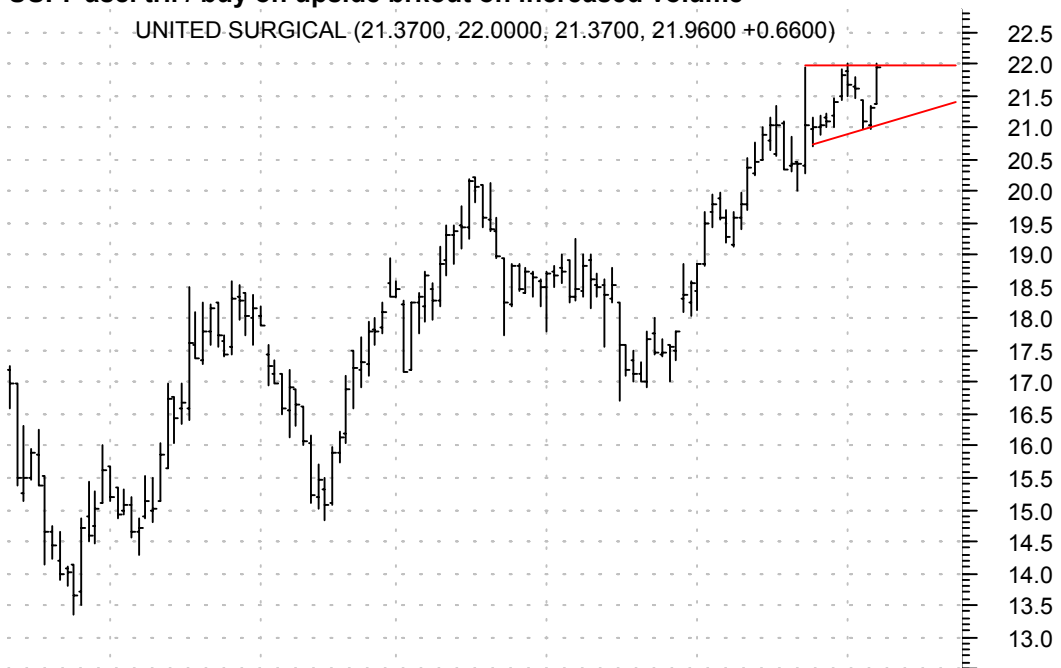
TPTH symm. tri. / buy on upside brkout on increased volume

Tripath Imaging (6.1600, 6.5900, 6.0500, 6.5000 +0.3600)



USPI asc. tri. / buy on upside brkout on increased volume

UNITED SURGICAL (21.3700, 22.0000, 21.3700, 21.9600 +0.6600)



XICO symm. tri. / buy on upside brkout on increased volume

Xicor Inc:OTC (6.3900, 6.7500, 6.2700, 6.2700 -0.0500)



chartpatterns.com

Chart Pattern Analysis for Timing the Markets

KMatras@aol.com