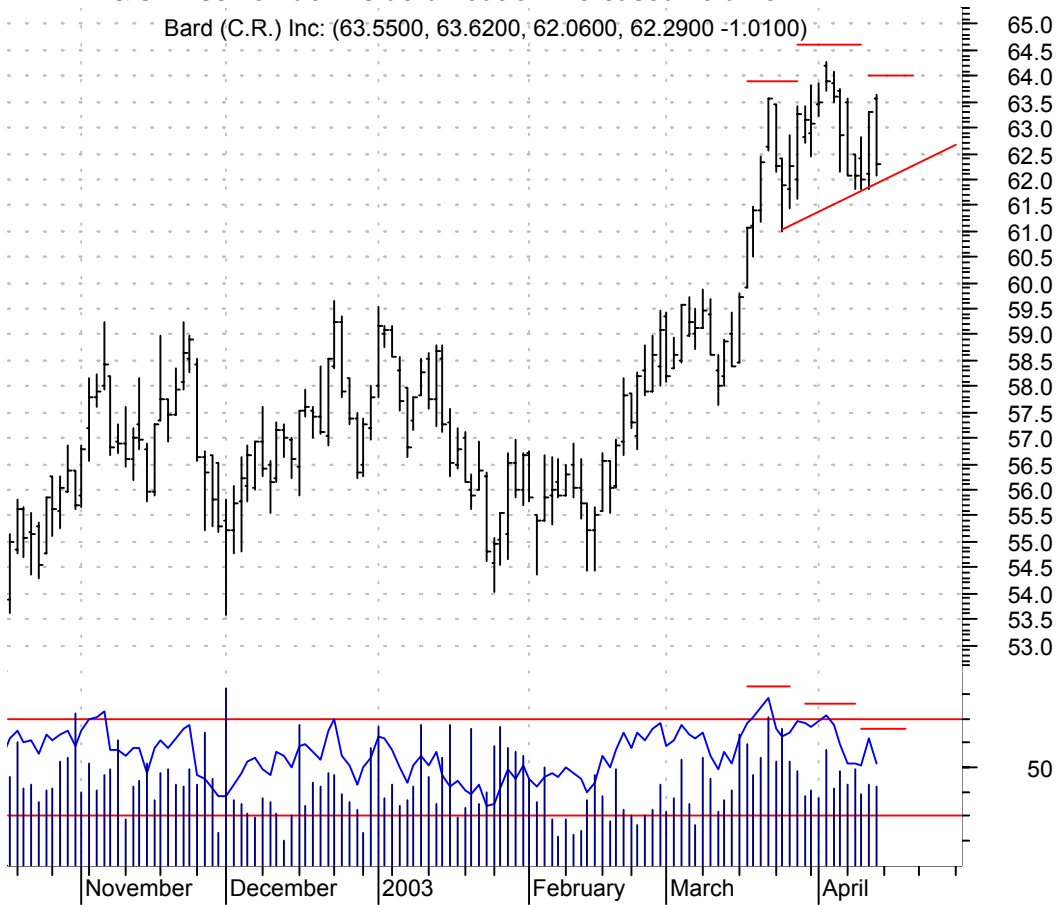


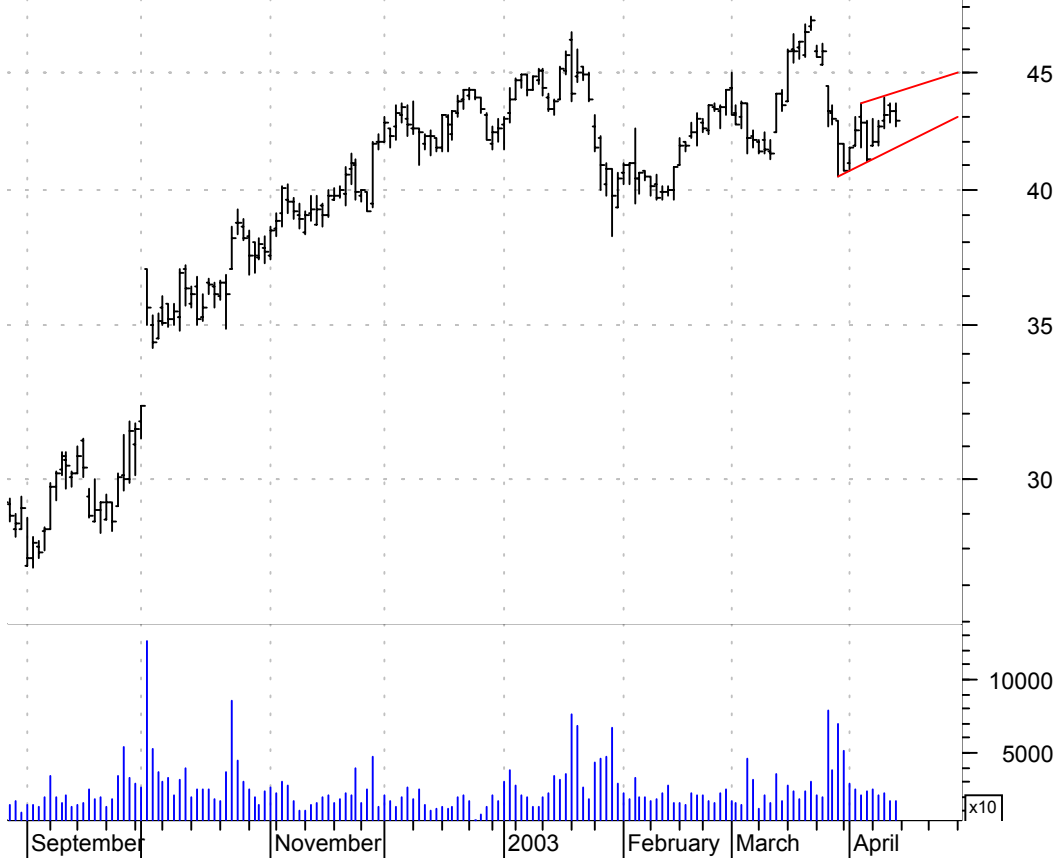
**BCR h. & sh. / sell on downside brkout on increased volume**

Bard (C.R.) Inc: (63.5500, 63.6200, 62.0600, 62.2900 -1.0100)



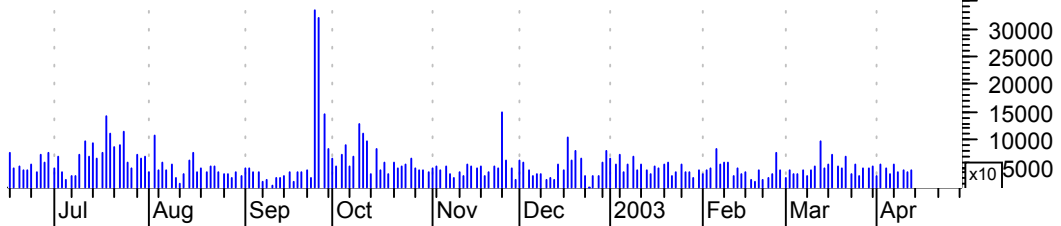
**BSX rising wedge preceded by 'pole-like' move / sell on downside brkout on increased volume**

Boston Scientifi (43.2500, 43.6500, 42.6000, 42.9000 -0.3500)



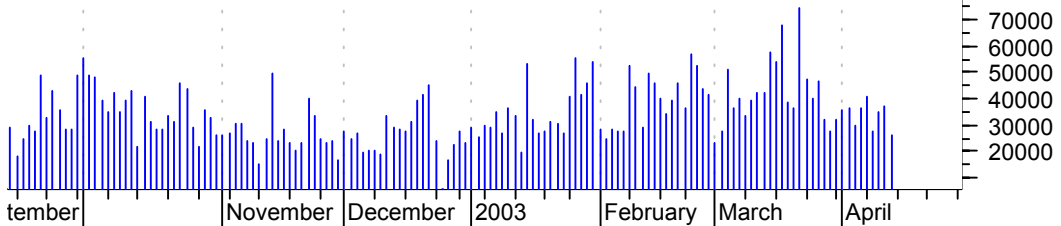
**CD falling wedge / buy on upside breakout on increased volume**

Cendant Corp:NYS (12.8800, 12.9900, 12.7900, 12.8500 +0.1500)



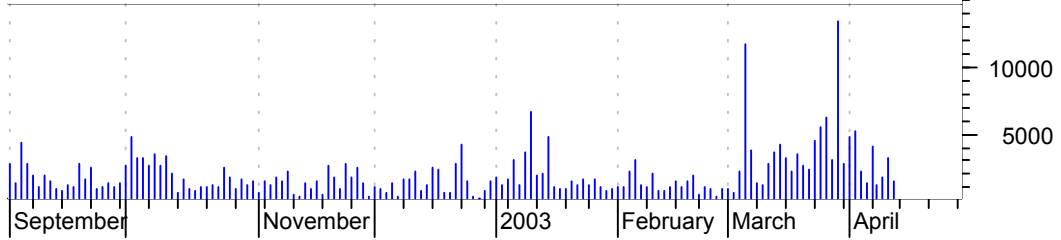
**DD symm. tri. / buy on upside breakout on increased volume**

Dupont (E) De N (39.9000, 40.2300, 39.2600, 39.4800 +0.1200)



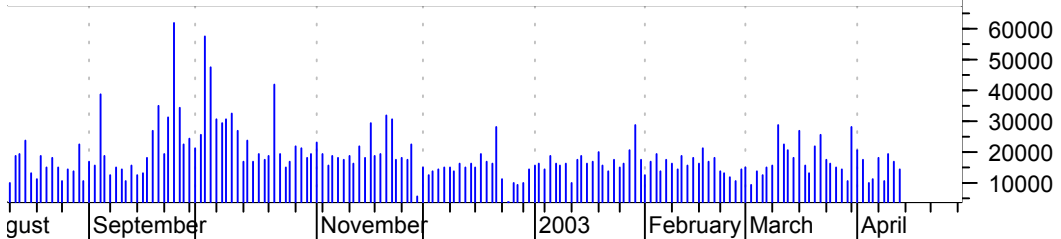
**FINL symm. tri. / buy on upside brkout on increased volume**

Finish Line Inc: (15.9800, 16.1000, 15.7500, 15.9200 -0.0200)



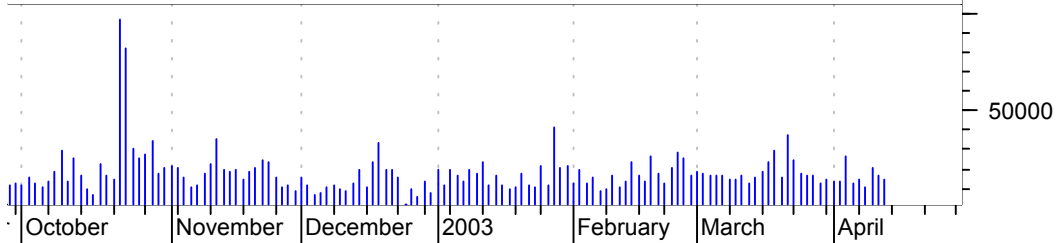
**FISV falling wedge / buy on upside brkout on increased volume**

Fiserv Inc:OTC (31.6400, 32.1000, 30.9300, 31.3200 -0.1700)



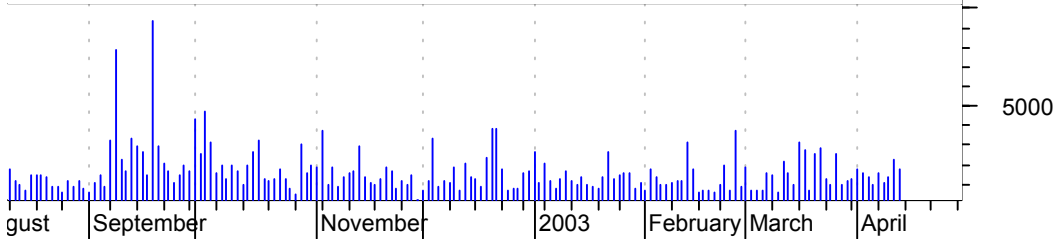
**GIS symm. tri. / buy on upside brkout on increased volume**

General Mills:NY (45.7500, 45.9000, 45.1300, 45.3000 -0.0300)



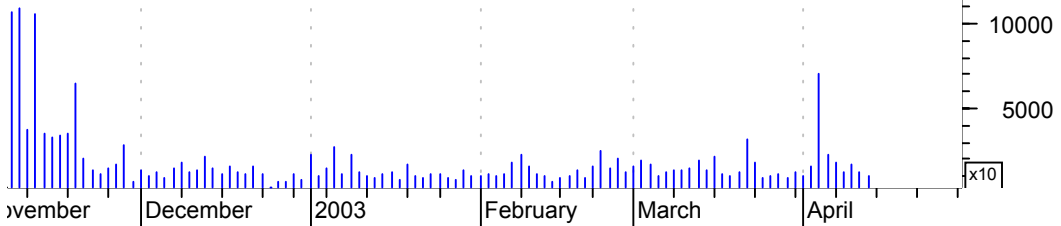
**GPN asc. tri. / buy on upside brkout on increased volume**

Global Payments (30.6500, 30.9000, 30.3500, 30.6700 +0.4100)



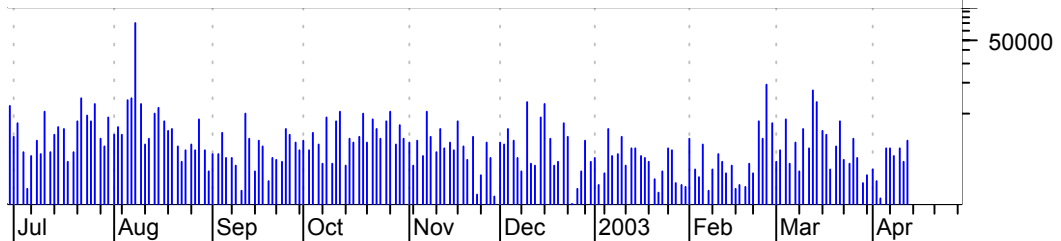
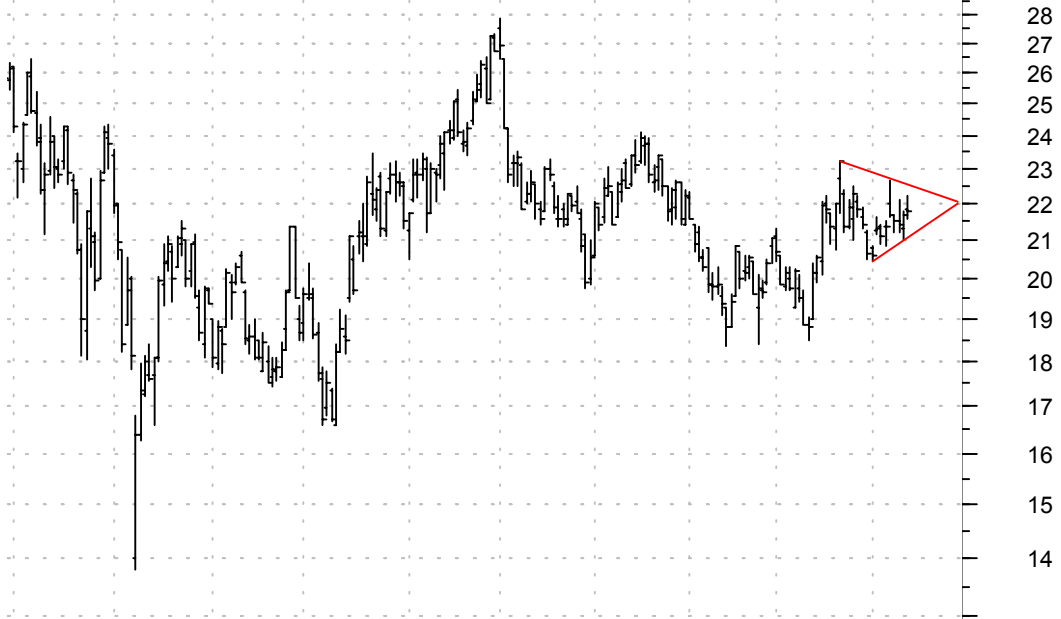
**HRB rising wedge preceded by 'pole-like' move / sell on downside brkout on increased volume**

Block (H & R):NY (41.2500, 41.5800, 40.9500, 41.0100 +0.000)



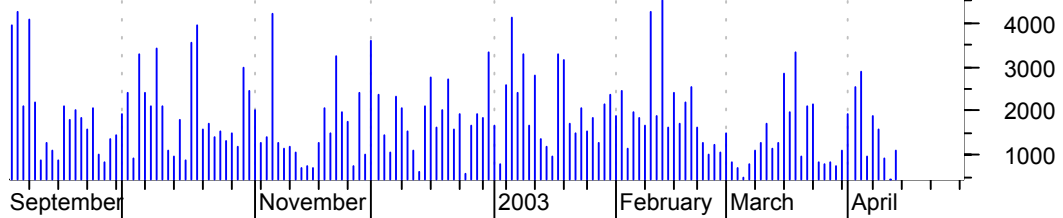
**HSP symm. tri. / buy on upside brkout on increased volume**

Hispanic Broadca (21.8500, 22.2400, 21.5700, 21.8000 +0.1400)



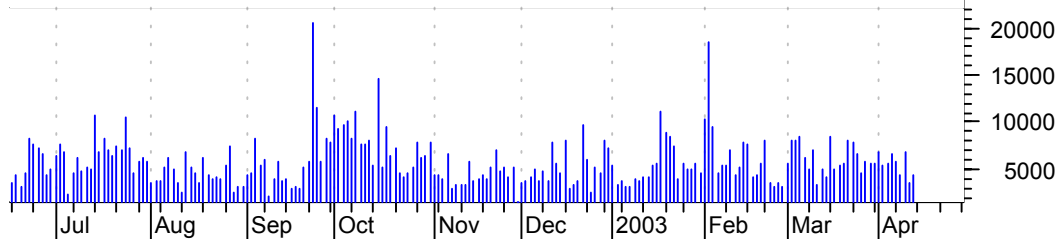
**IOM asc. tri. / buy on upside brkout on increased volume**

lomega Cp:NYSE (11.3600, 11.4100, 11.0600, 11.3000 +0.0400)



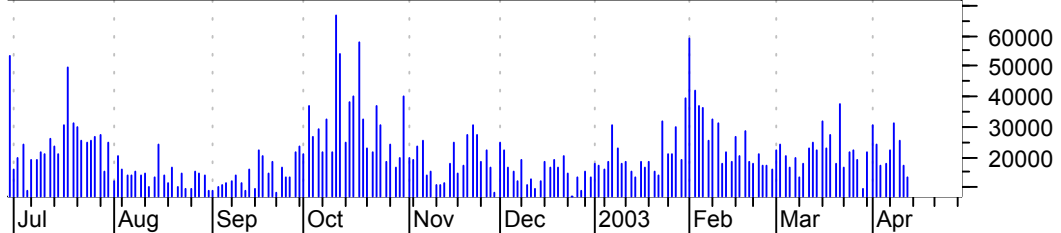
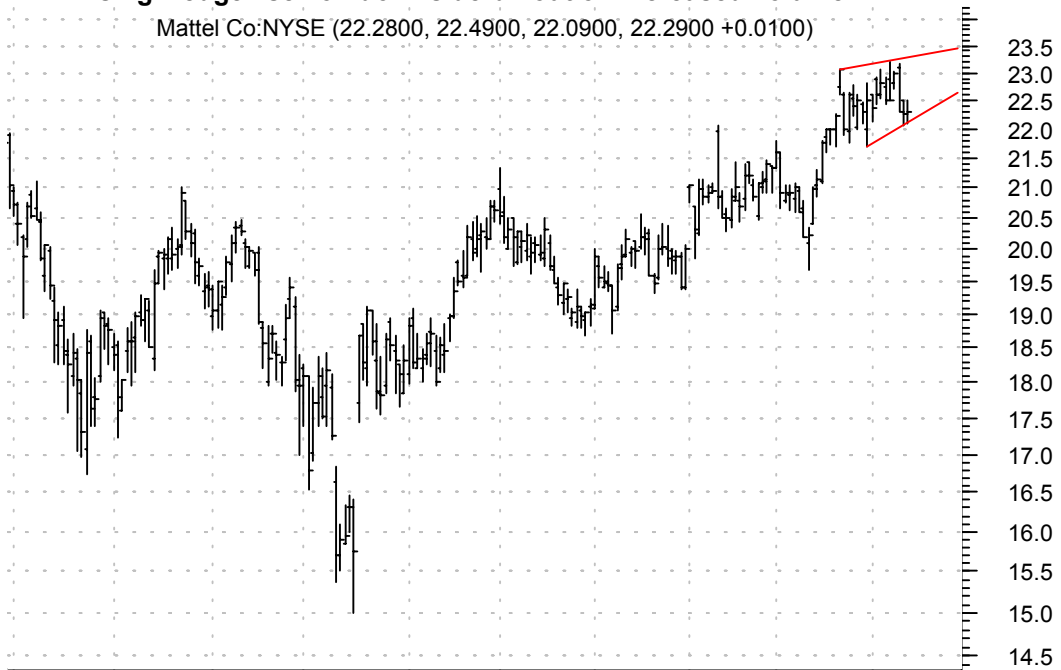
**LIZ rising wedge / sell on downside brkout on increased volume**

Liz Claiborne:NY (31.2000, 31.4600, 30.9700, 31.1200 +0.0100)



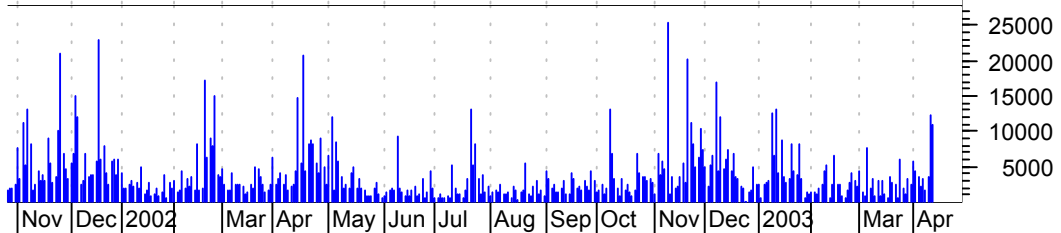
**MAT rising wedge / sell on downside brkout on increased volume**

Mattel Co:NYSE (22.2800, 22.4900, 22.0900, 22.2900 +0.0100)



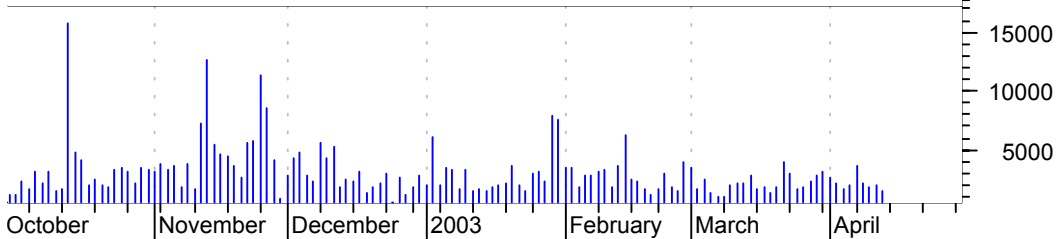
**OMM symm. tri. / buy on upside brkout on larger than normal volume**

OMI Corp:NYSE (4.3500, 4.5500, 4.3500, 4.4900 +0.1400)



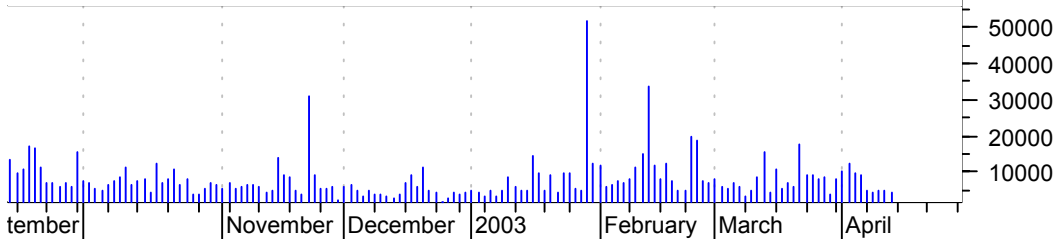
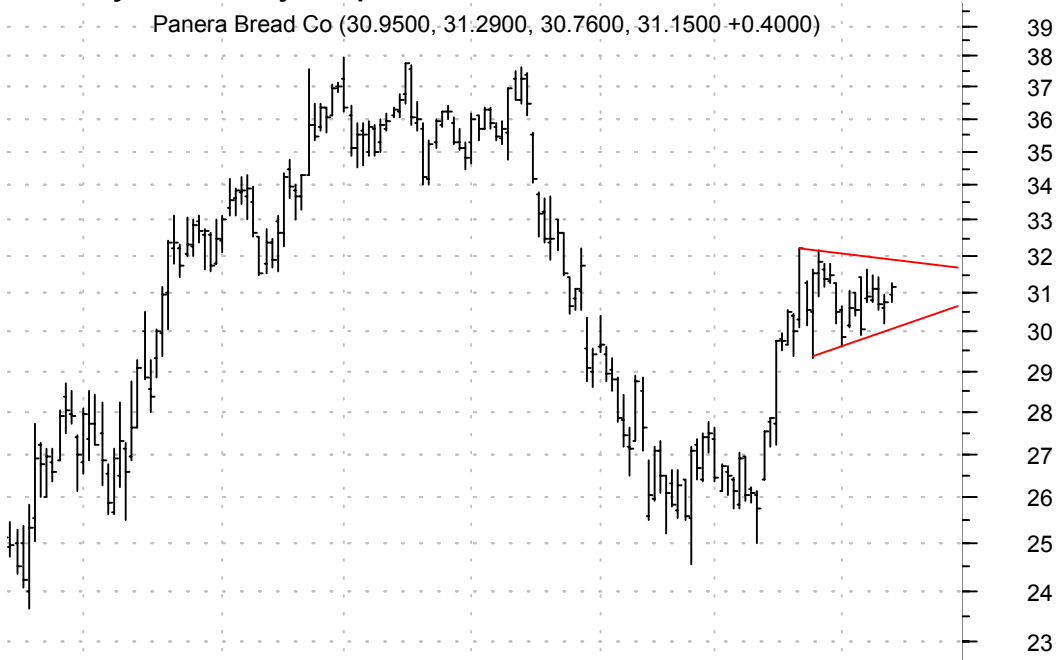
**PNR symm. tri. / buy on upside brkout on increased volume**

Pentair Inc:NYSE (36.1400, 36.4500, 35.8000, 35.9900 +0.1000)



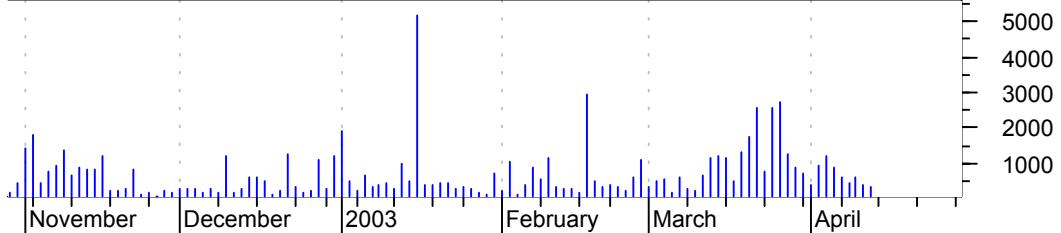
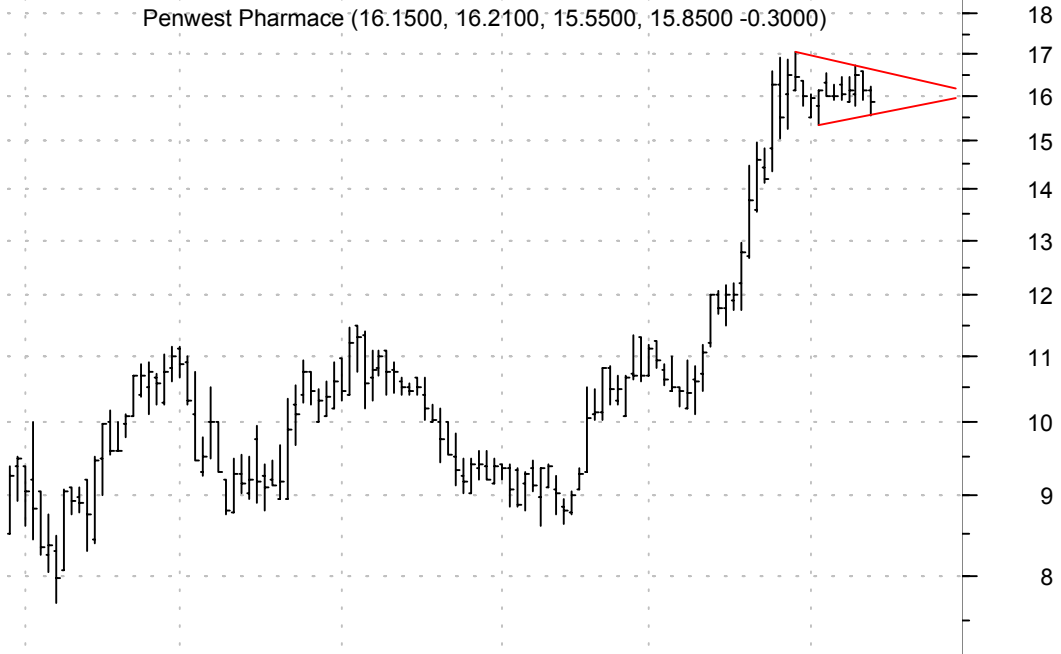
**PNRA symm. tri. / buy on upside brkout on increased volume**

Panera Bread Co (30.9500, 31.2900, 30.7600, 31.1500 +0.4000)

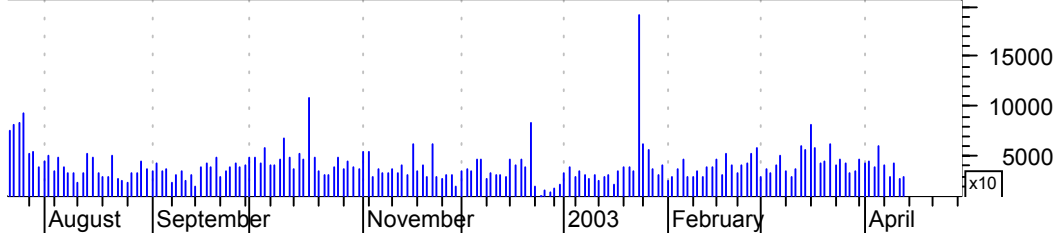
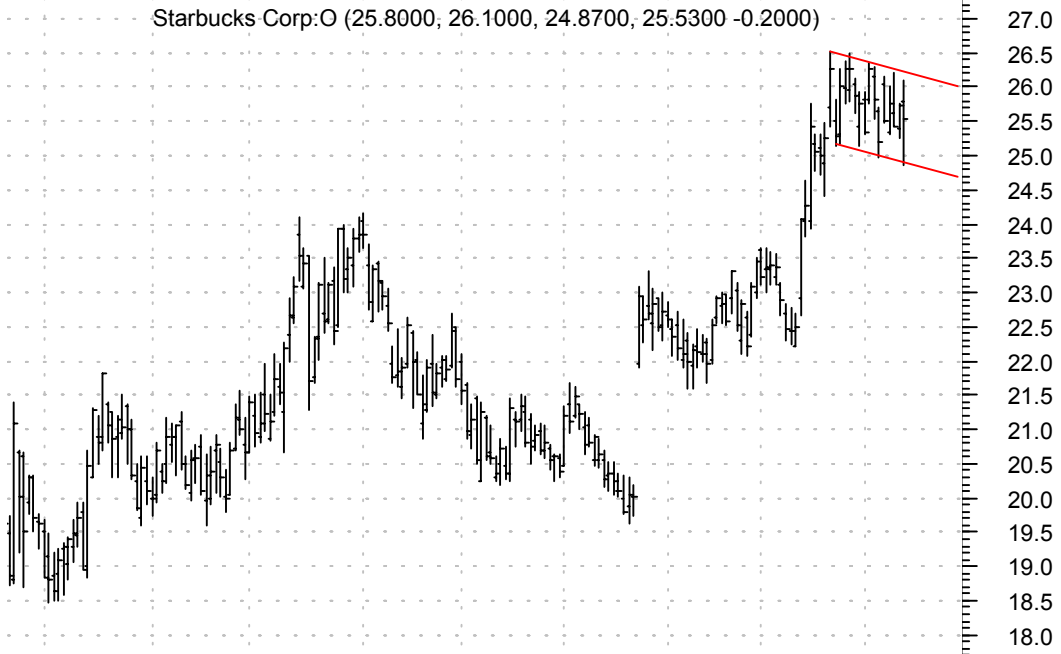




**PPCO symm. tri. preceded by 'pole-like' move / buy on upside brkout on increased volume**

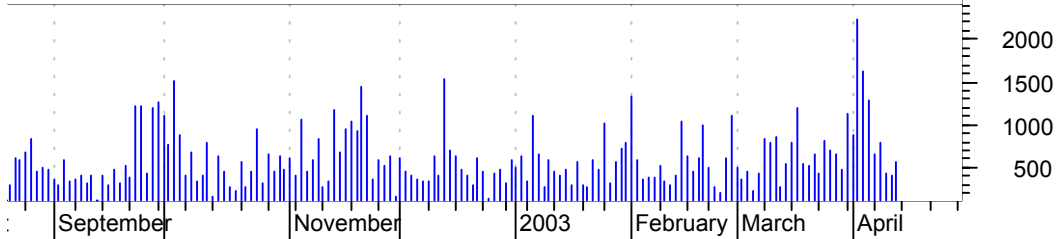
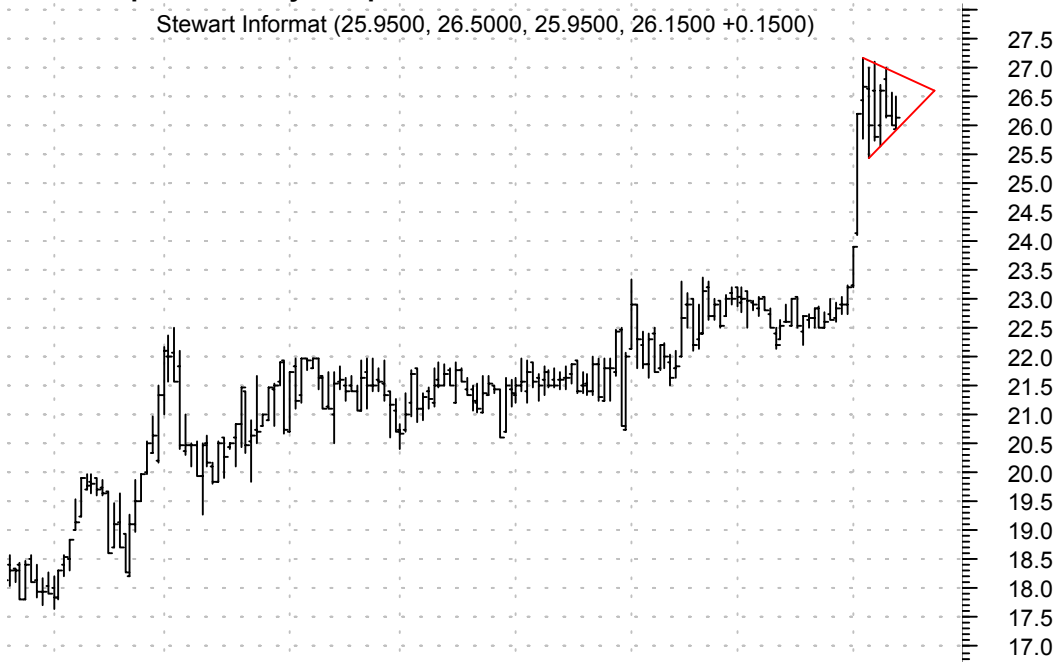


**SBUX sloppy bullish flag / buy on upside brkout on increased volume**



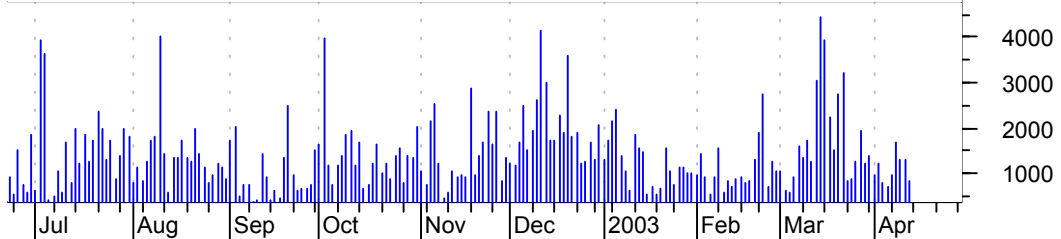
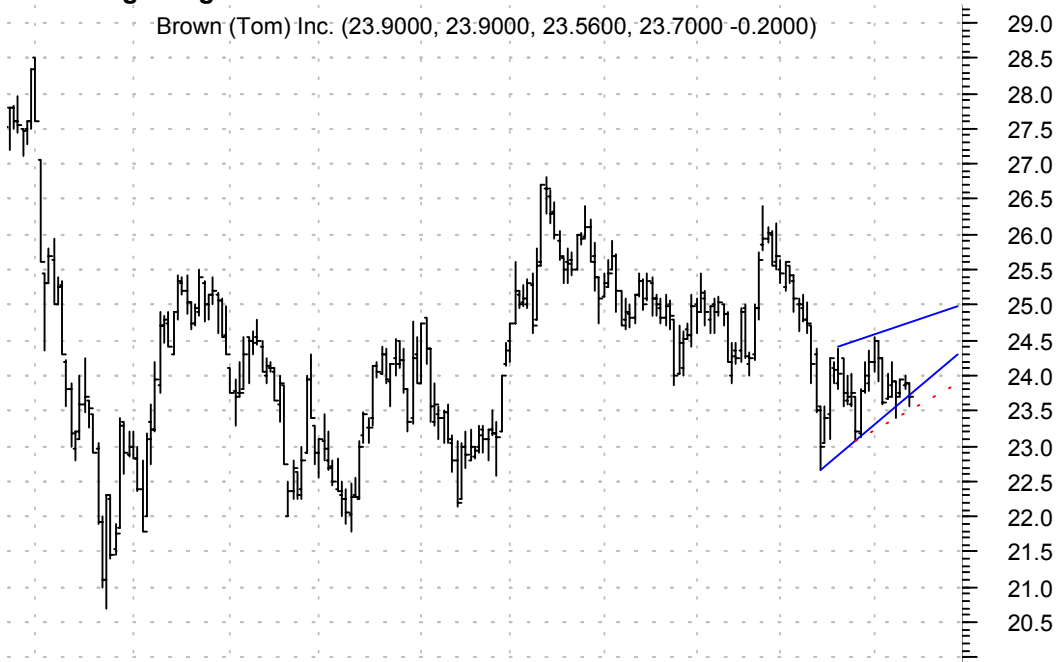
**STC bull pennant / buy on upside breakout on increased volume**

Stewart Informat (25.9500, 26.5000, 25.9500, 26.1500 +0.1500)



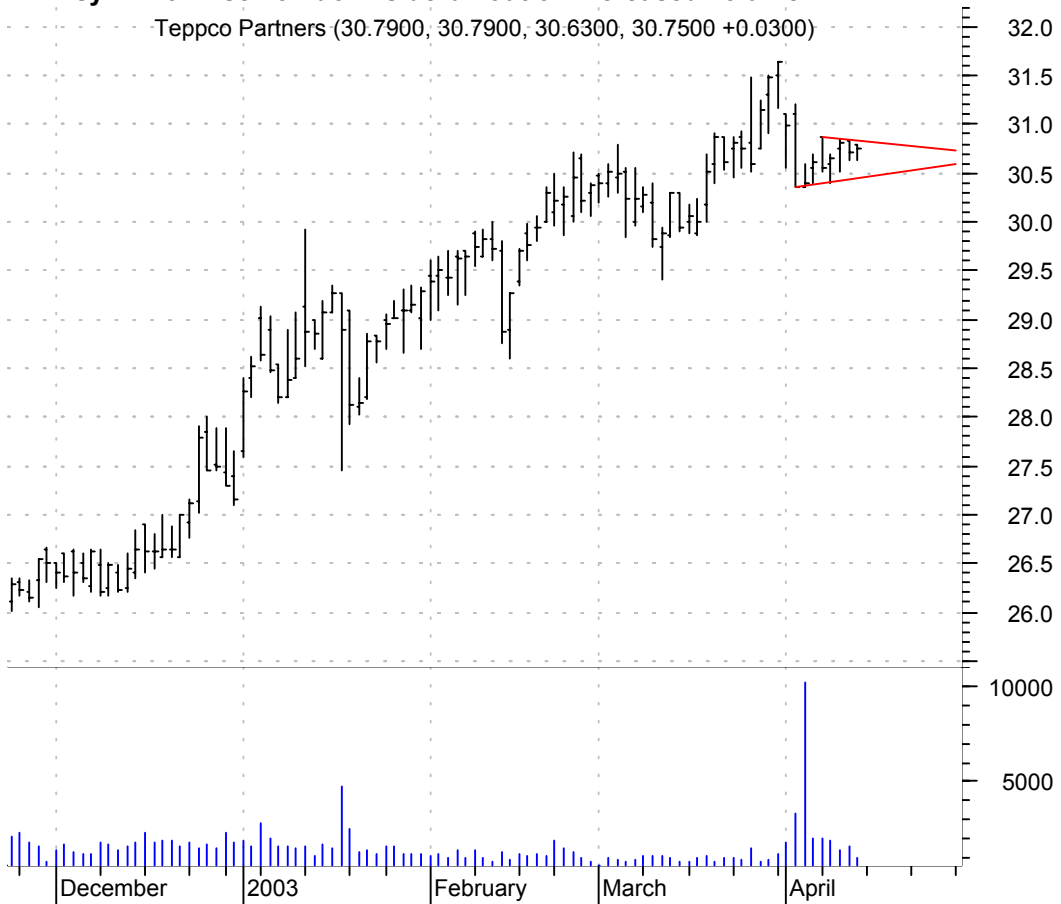
**TBI rising wedge / sell on downside breakout thru dotted red line on increased volume**

Brown (Tom) Inc: (23.9000, 23.9000, 23.5600, 23.7000 -0.2000)



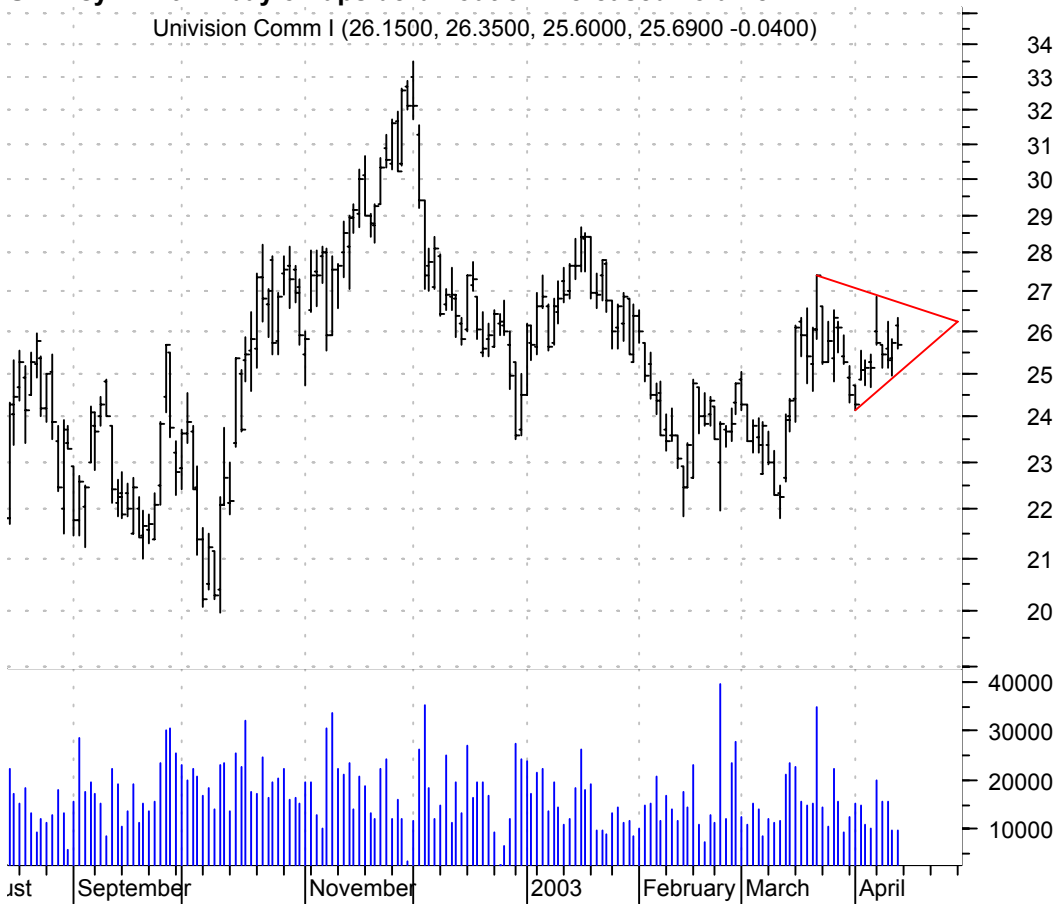
**TPP symm. tri. / sell on downside brkout on increased volume**

Teppco Partners (30.7900, 30.7900, 30.6300, 30.7500 +0.0300)



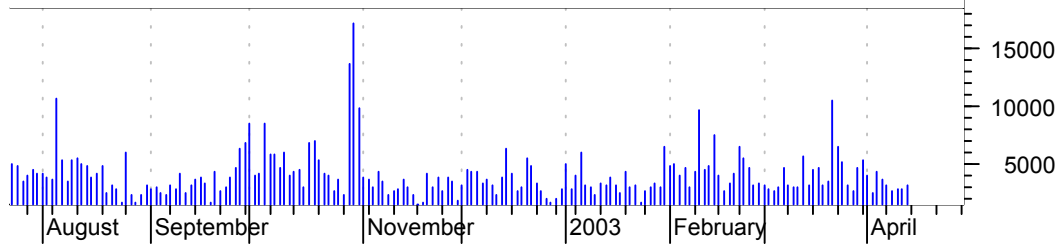
**UVN symm. tri. / buy on upside brkout on increased volume**

Univision Comm I (26.1500, 26.3500, 25.6000, 25.6900 -0.0400)



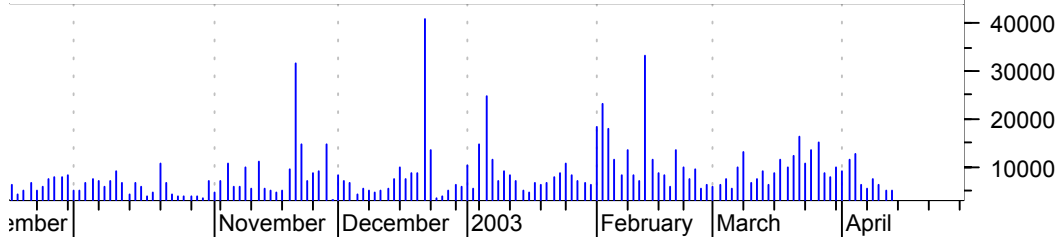
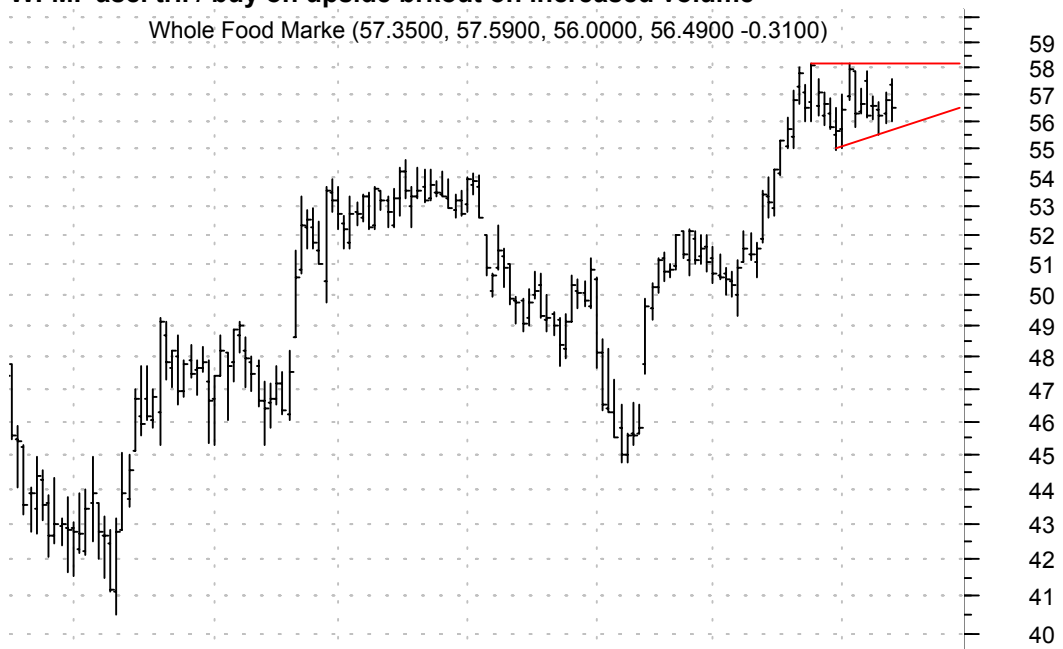
**VFC symm. tri. / buy on upside breakout on increased volume**

VF Cp:NYSE (38.2500, 38.6500, 37.6600, 38.0300 +0.0300)



**WFMI asc. tri. / buy on upside breakout on increased volume**

Whole Food Marke (57.3500, 57.5900, 56.0000, 56.4900 -0.3100)



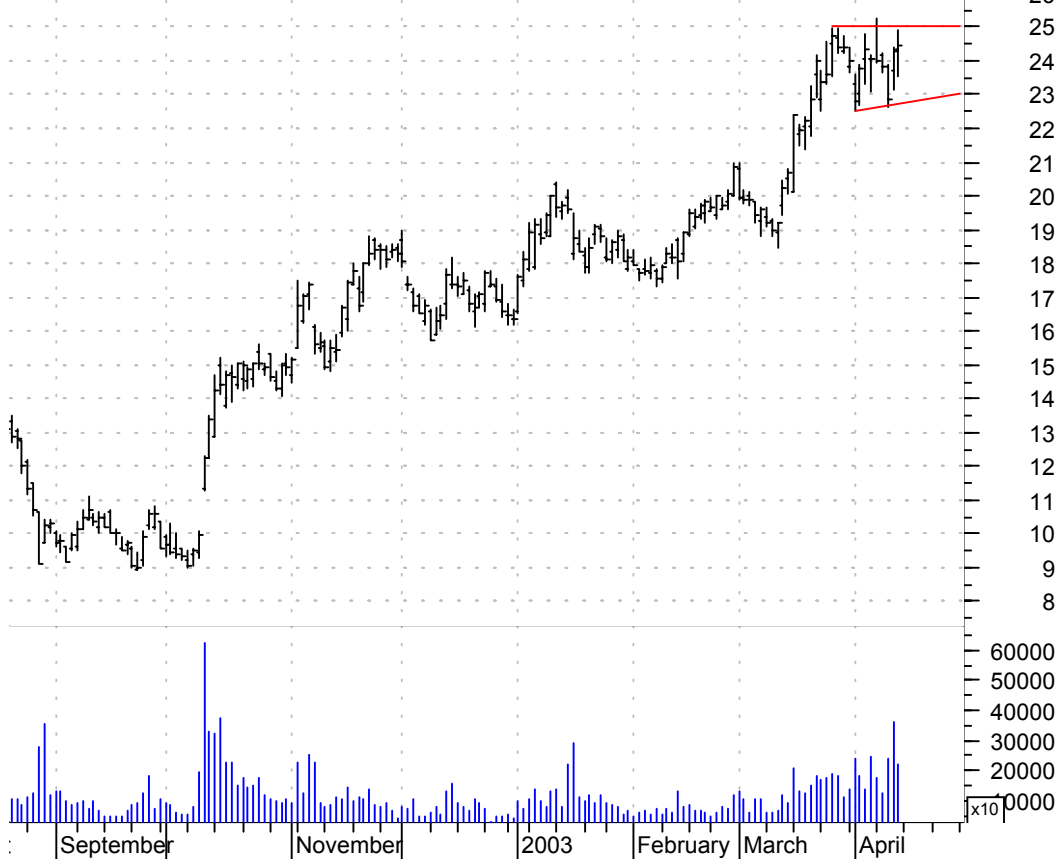
**WPI 'complicated' h. & sh. / sell on downside brkout on increased volume**

Watson Pharmaceu (27.9400, 28.3500, 27.7000, 28.2900 +0.4200)



**YHOO sloppy asc. tri. / buy on upside brkout on larger than normal volume**

Yahoo Inc:OTC (24.3500, 24.9300, 23.5500, 24.4300 +0.1600)



**chartpatterns.com**  
Chart Pattern Analysis for Timing the Markets

[KMatras@aol.com](mailto:KMatras@aol.com)