

ABC

Amerisource Berg (64.4500, 64.5500, 63.0000, 64.4500 -0.0500)



ACN

Accenture LTD:NY (25.8000, 25.8000, 24.7000, 25.6300 -0.3700)



ACS

Affiliated Compu (91.5000, 92.9000, 90.7500, 91.0000 -0.6100)



AGY

Argosy Gaming Co (34.5500, 35.4000, 34.5500, 35.4000 +0.8900)



AHP



ALLY



ATN

Action Performan (38.2000, 38.2000, 37.0500, 37.5900 -0.7100)

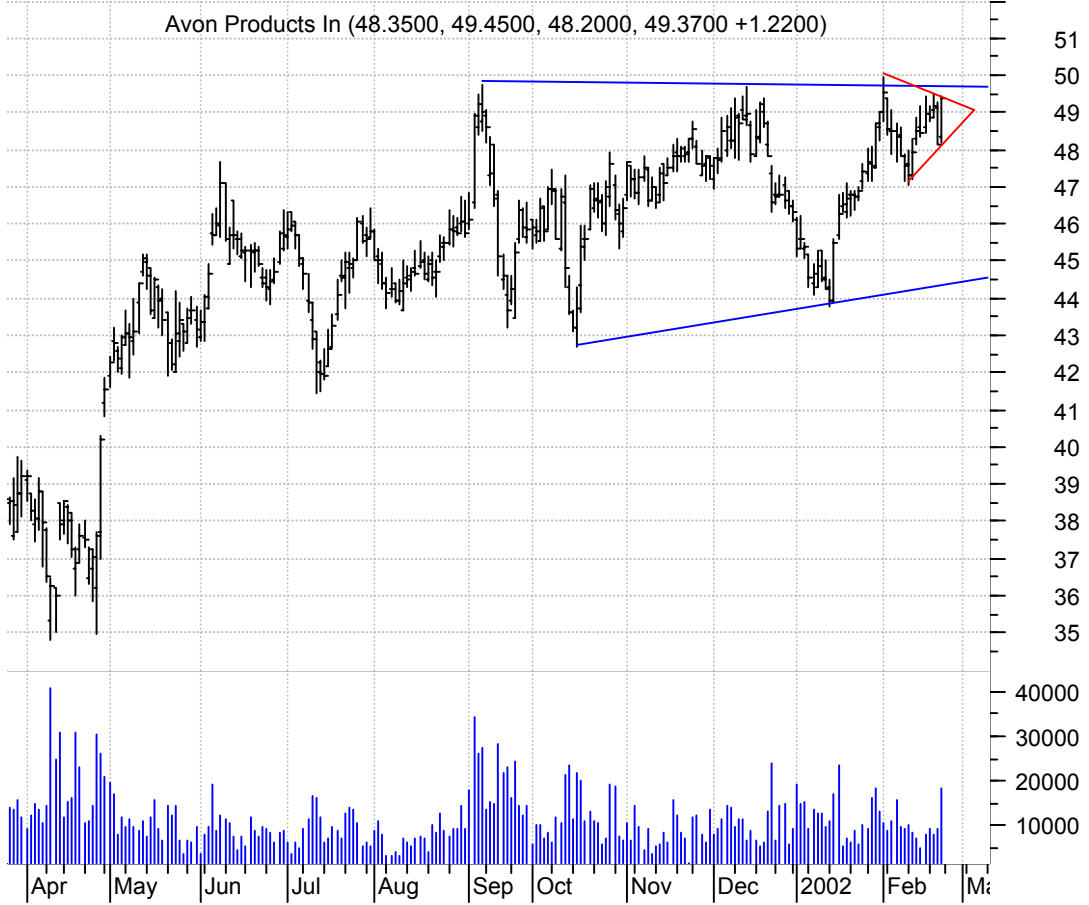


ATVI

Activision Inc:N (25.5600, 26.7100, 25.4300, 26.7100 +1.0800)



AVP



AZR



BHI

Baker Hughes:NYS (35.0000, 35.9000, 34.6600, 35.1500 +0.2000)



BKUNA

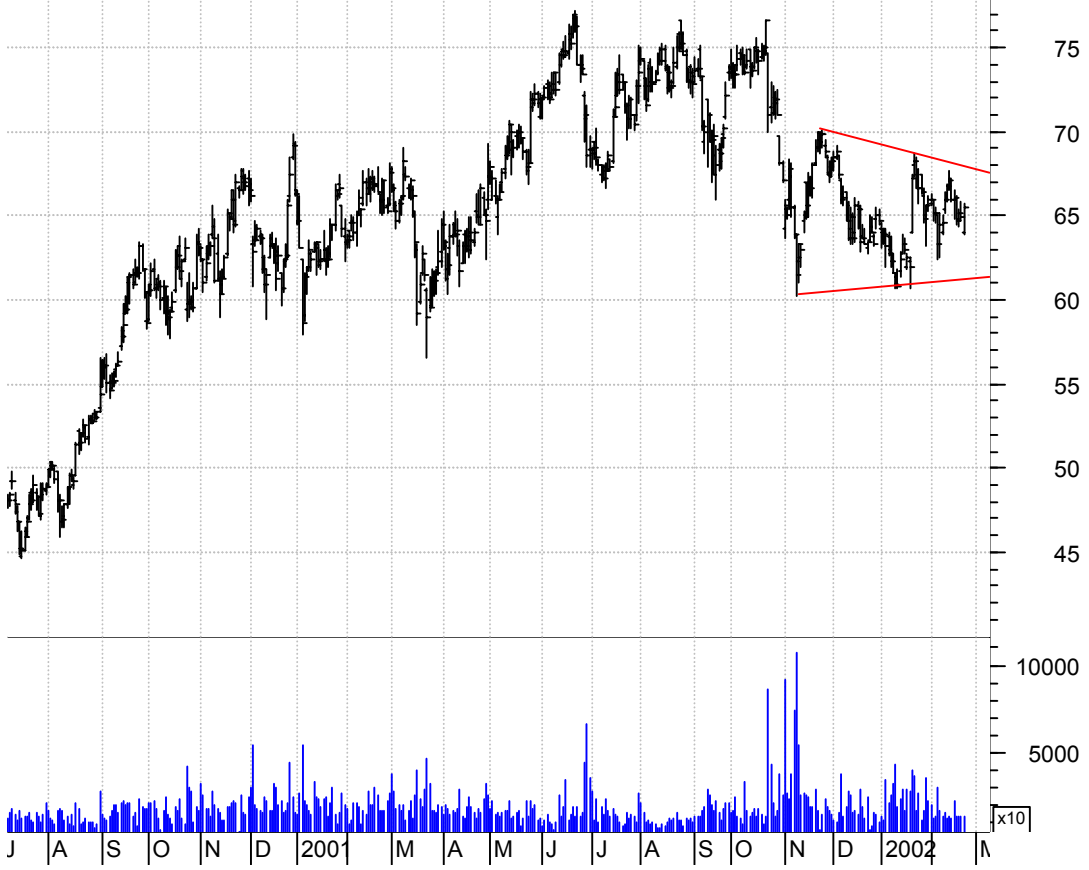
Banknited CI A: (15.4500, 15.7100, 15.4500, 15.7000 +0.1400)



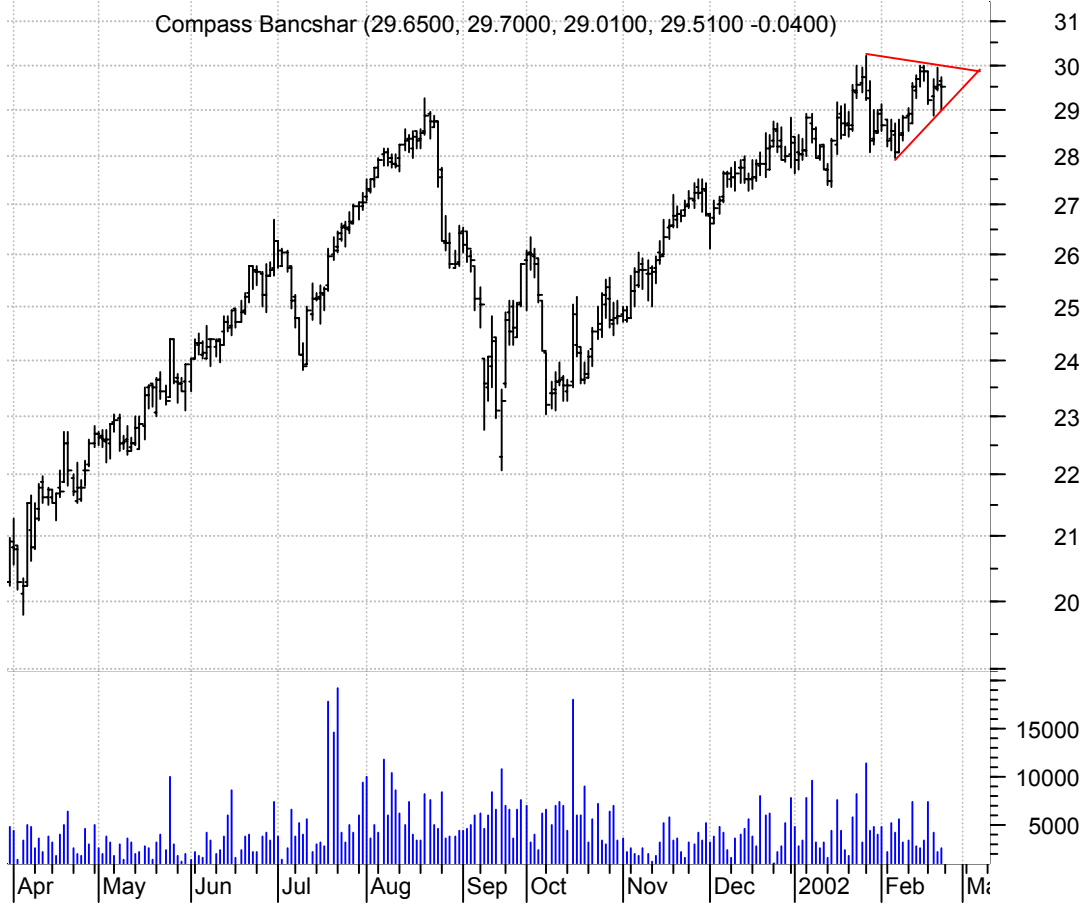
BLTI



CAH



CBSS



DHI



DLIA



EDS



ELBO

Electronics Bout (35.8100, 35.9500, 34.1000, 35.7400 -0.2600)

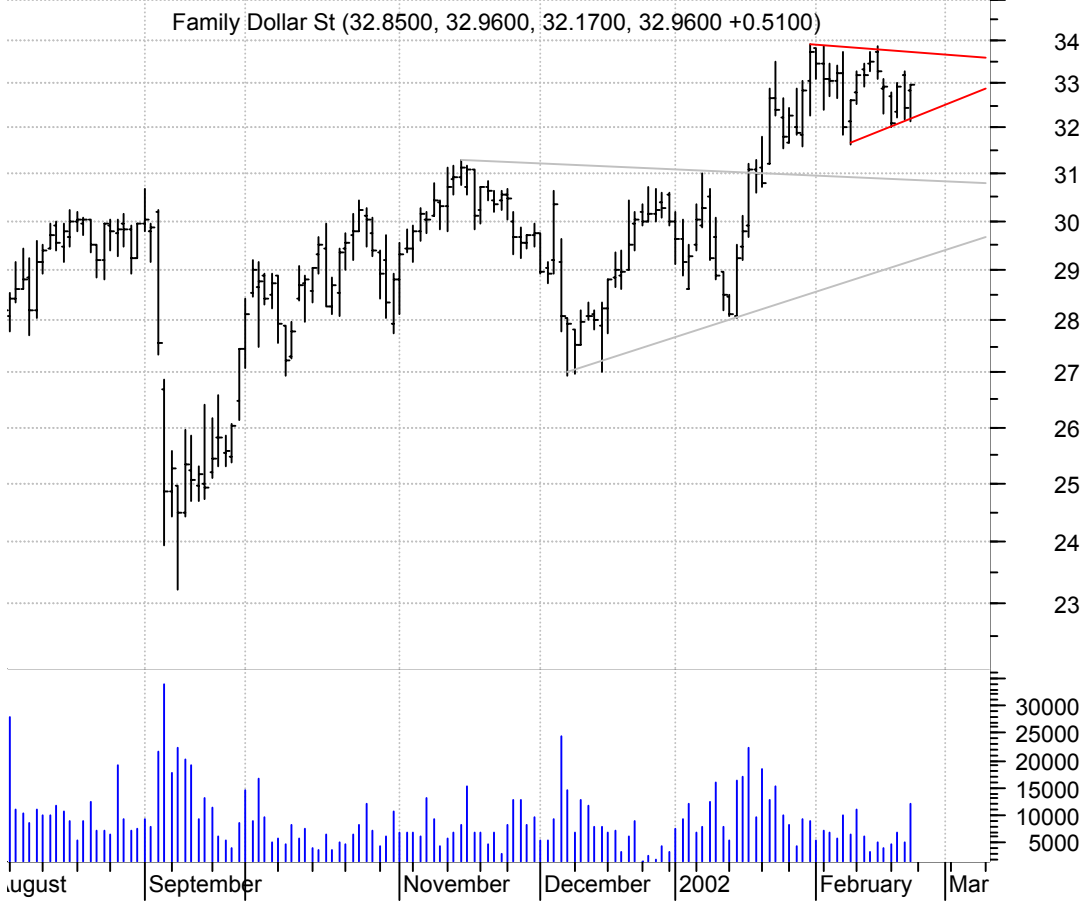


FBN

Furniture Brands (36.2800, 36.2800, 35.4000, 36.1800 -0.1000)



FDO



FDX



GILD

Gilead Science:N (67.0500, 67.6400, 65.2500, 66.4900 -0.5700)



GTK

GTech Holdings C (50.3000, 50.7200, 49.9000, 50.5600 +0.2800)



GWW

Grainger (WW):NY (53.9000, 55.2400, 53.8000, 55.0200 +0.9400)



HB

Hilenbrand Ind.: (59.6600, 59.7500, 59.0700, 59.7500 -0.1100)



HCR



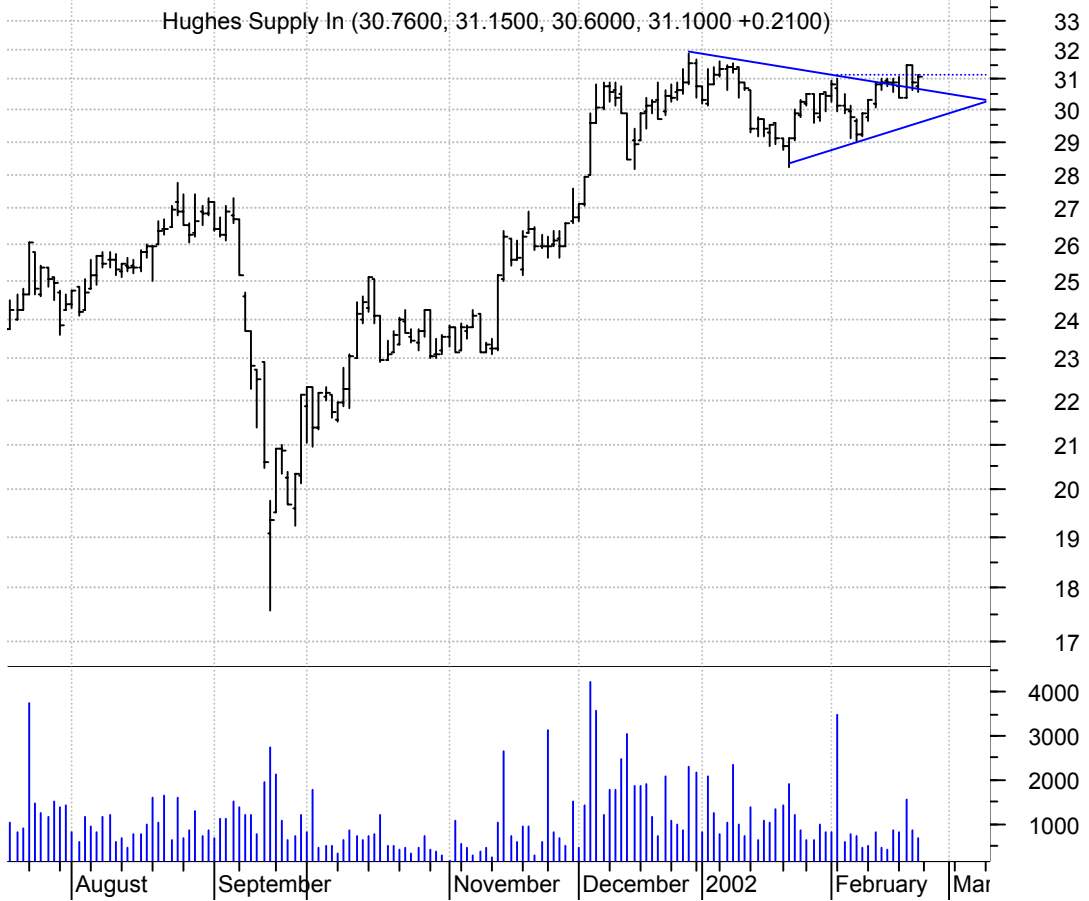
HLT



HON



HUG



IRM



KOF



LEN

Lennar Corporati (53.2600, 53.2600, 51.8000, 52.9500 -0.3100)



LOW

Lowe's Cos:NYSE (45.2600, 46.0500, 44.4200, 46.0500 +0.5400)



LQI

La Quinta Pptys: (6.5500, 6.7500, 6.3800, 6.7500 +0.2400)



MAN

Manpower Inc:NYS (33.2600, 33.7000, 32.9000, 33.5900 +0.2300)



MATK



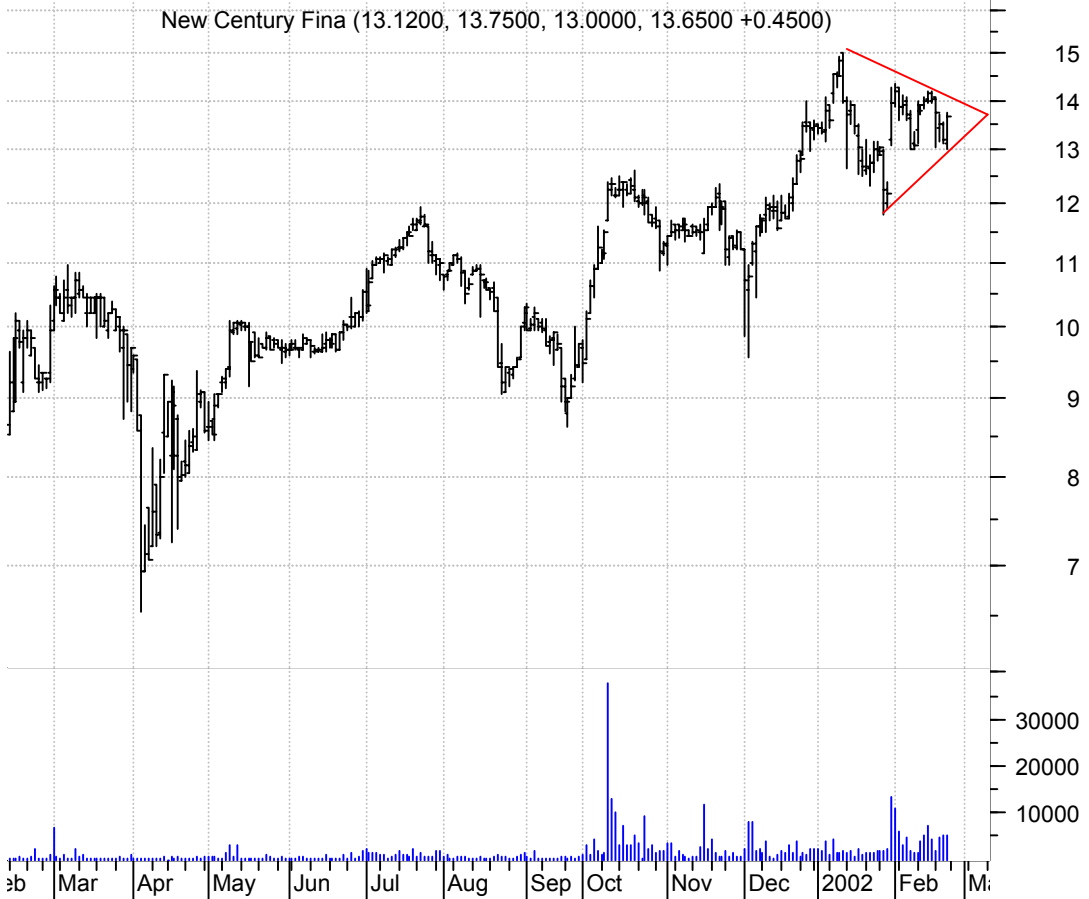
MNTG



NBTY



NCEN



NFX

Newfield Explora (34.6500, 35.7200, 34.6400, 35.5000 +0.8500)



OIIM

O2MICRO INTL LTD (23.3500, 23.5700, 22.7900, 22.9300 -0.7000)



PDCO



PFE



PRE



PX



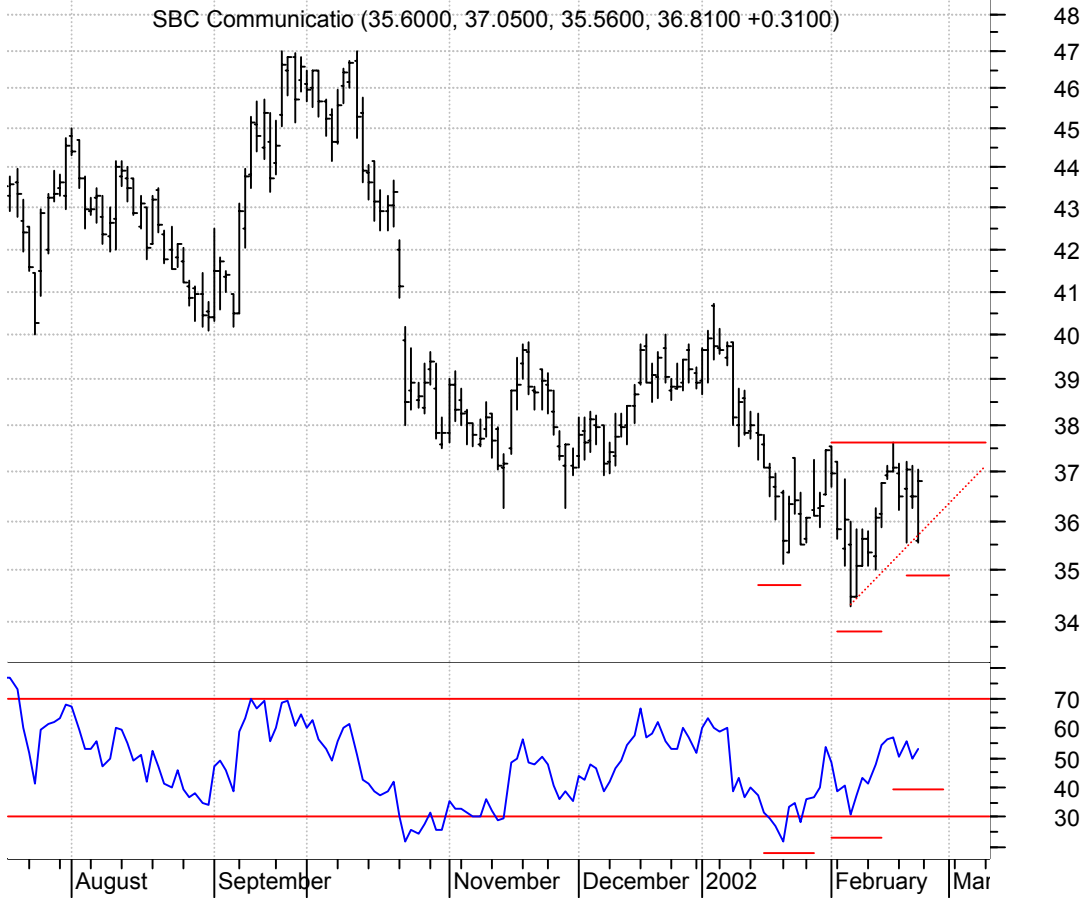
RYAN



SAH



SBC



SCHL



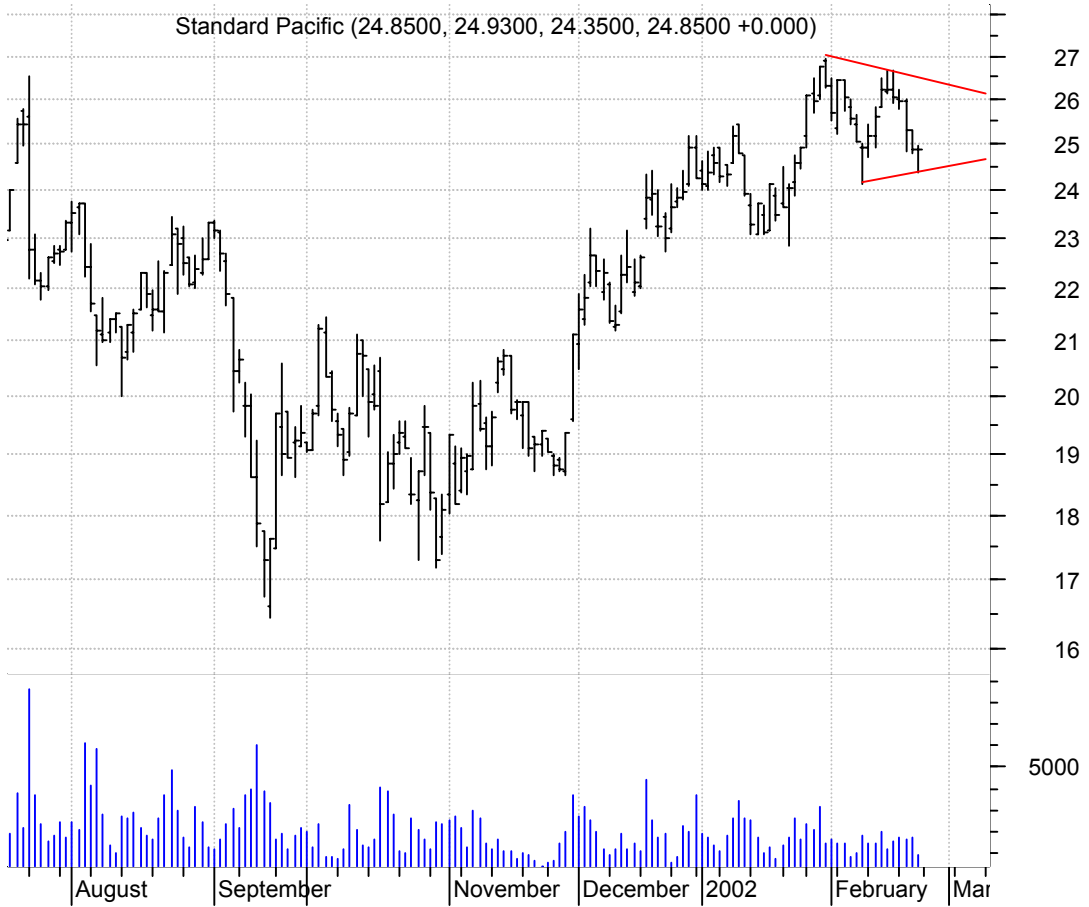
SFP

Salton Inc:NYSE (17.4500, 17.6000, 17.1300, 17.5200 +0.0700)



SPF

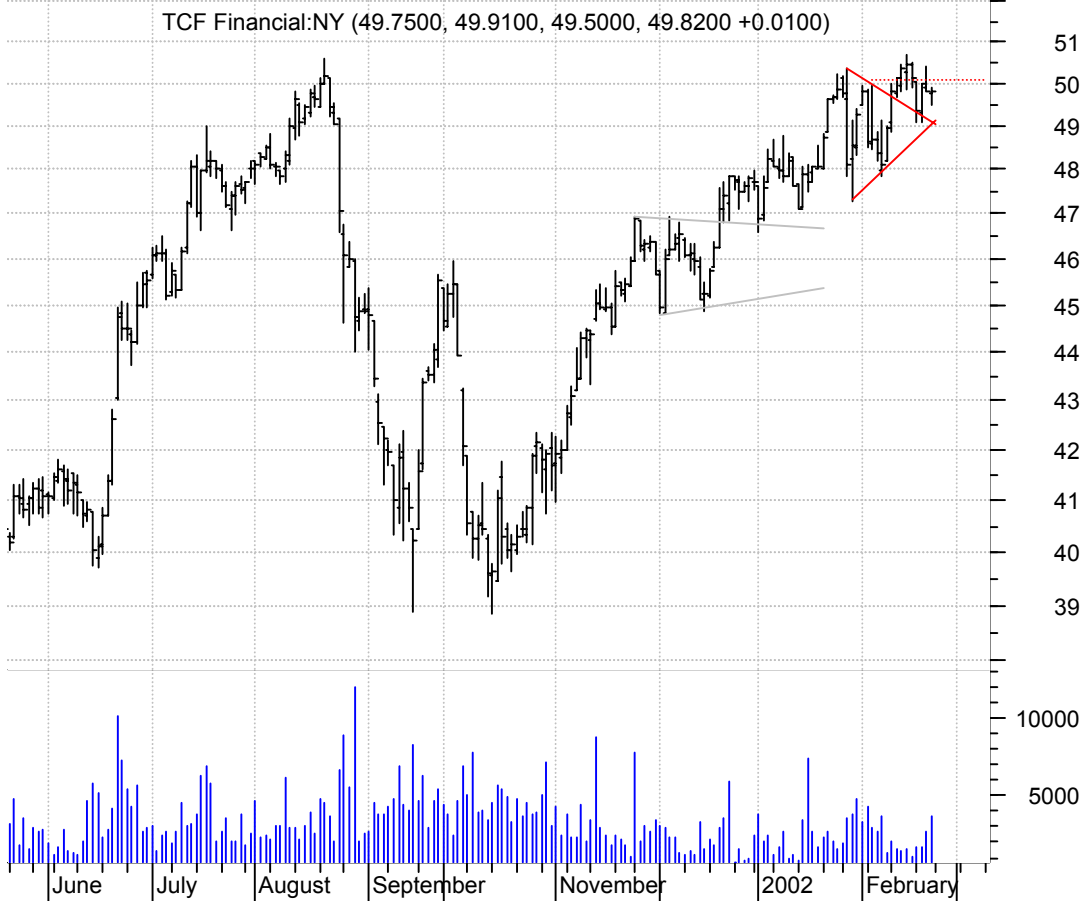
Standard Pacific (24.8500, 24.9300, 24.3500, 24.8500 +0.000)



SVU



TCB



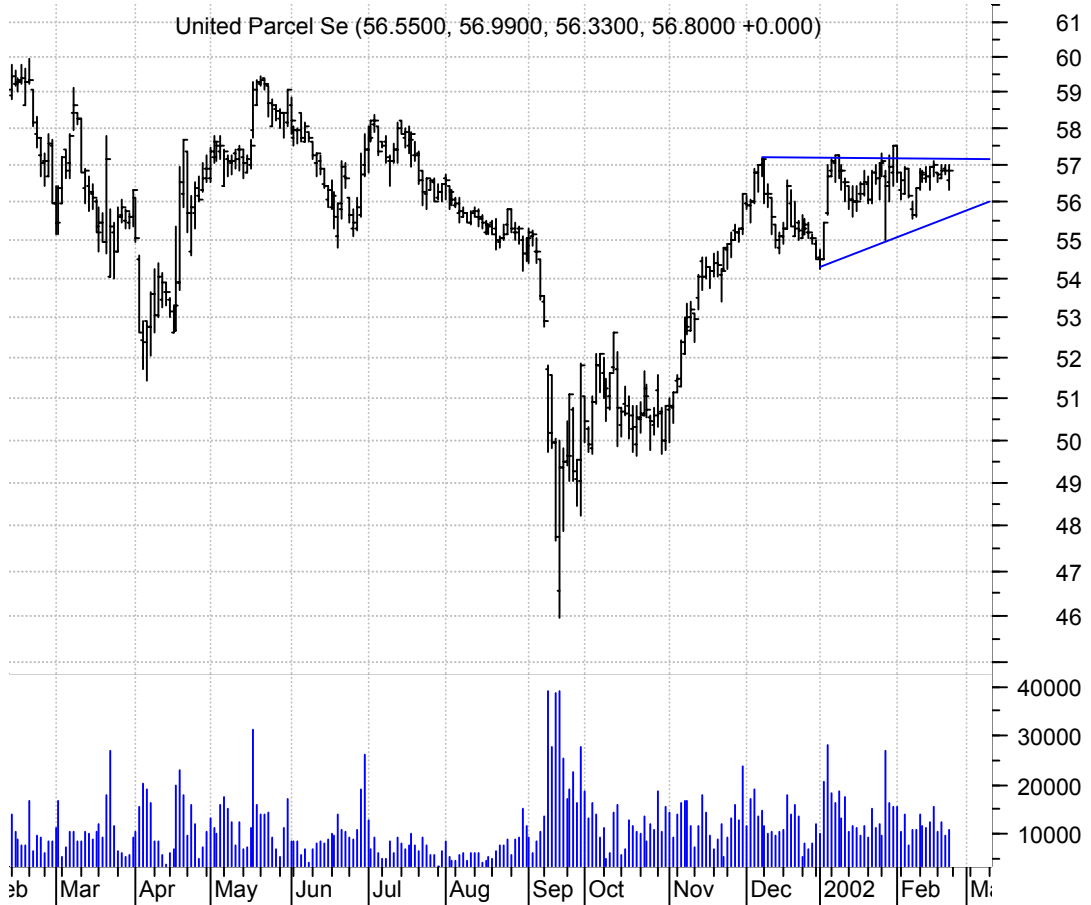
TOO

Too Inc:NYSE (27.9000, 28.3000, 27.6000, 27.9000 +0.0800)

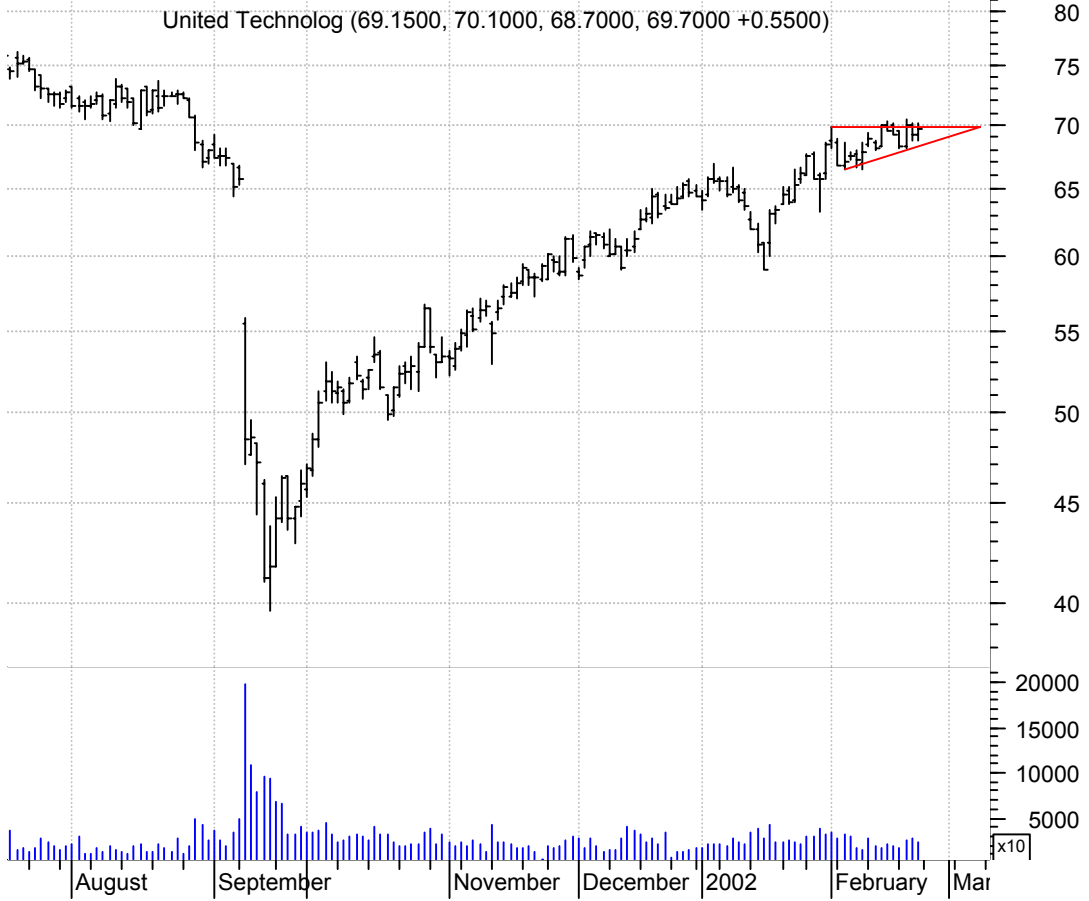


UPS

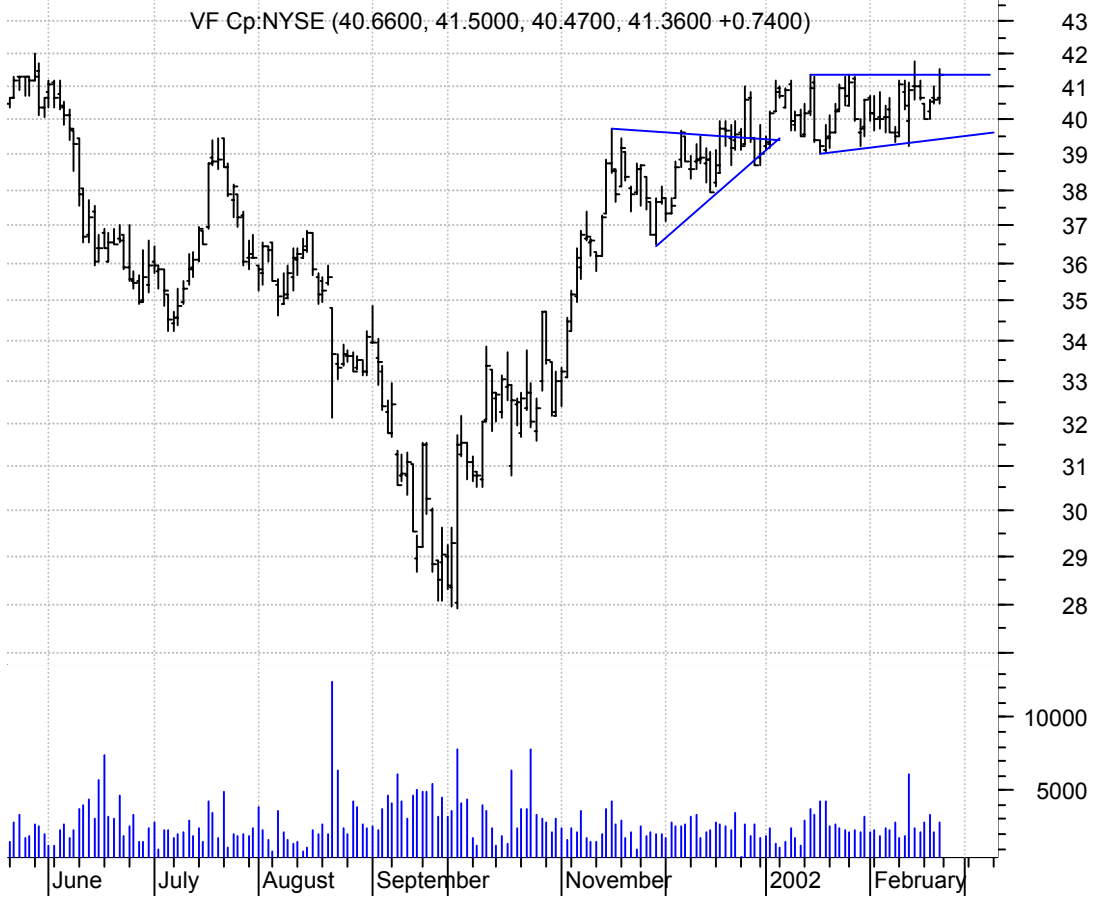
United Parcel Se (56.5500, 56.9900, 56.3300, 56.8000 +0.000)



UTX



VFC



VVS



WFC



WOR



WSM



WSTC

