

**AZO asc. triangle / buy on upside breakout on good volume**  
Autozone Inc.:NYSE (75.0500, 76.5200, 74.8400, 75.8500 +1.0700)

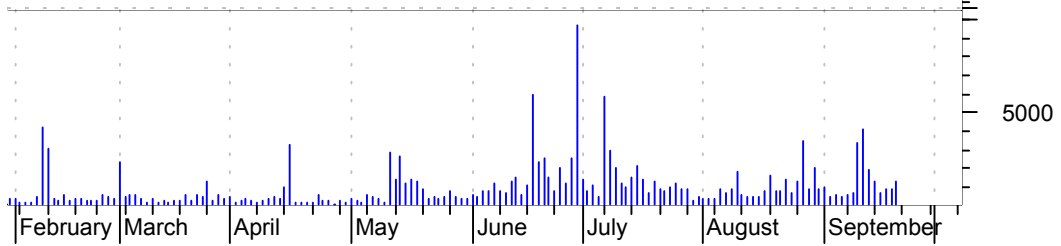


**BLC symm. triangle / buy on upside breakout on good volume**  
Belo Corp.:NYSE (22.6500, 23.3700, 22.5900, 23.3000 +0.8800)



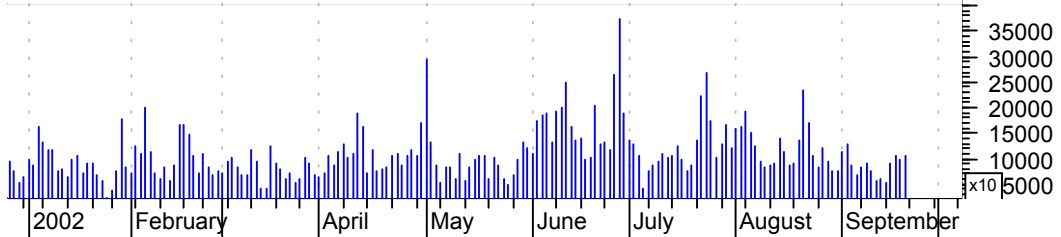
**CENT bull pennant / buy on upside breakout on increased volume**

Central Garden & (15.9000, 16.2500, 15.3500, 15.6200 -0.6500)



**CMCSK symm. triangle / buy on upside breakout on good volume**

Comcast Cp Spl C (22.4000, 23.2800, 22.0900, 23.0500 +0.8400)



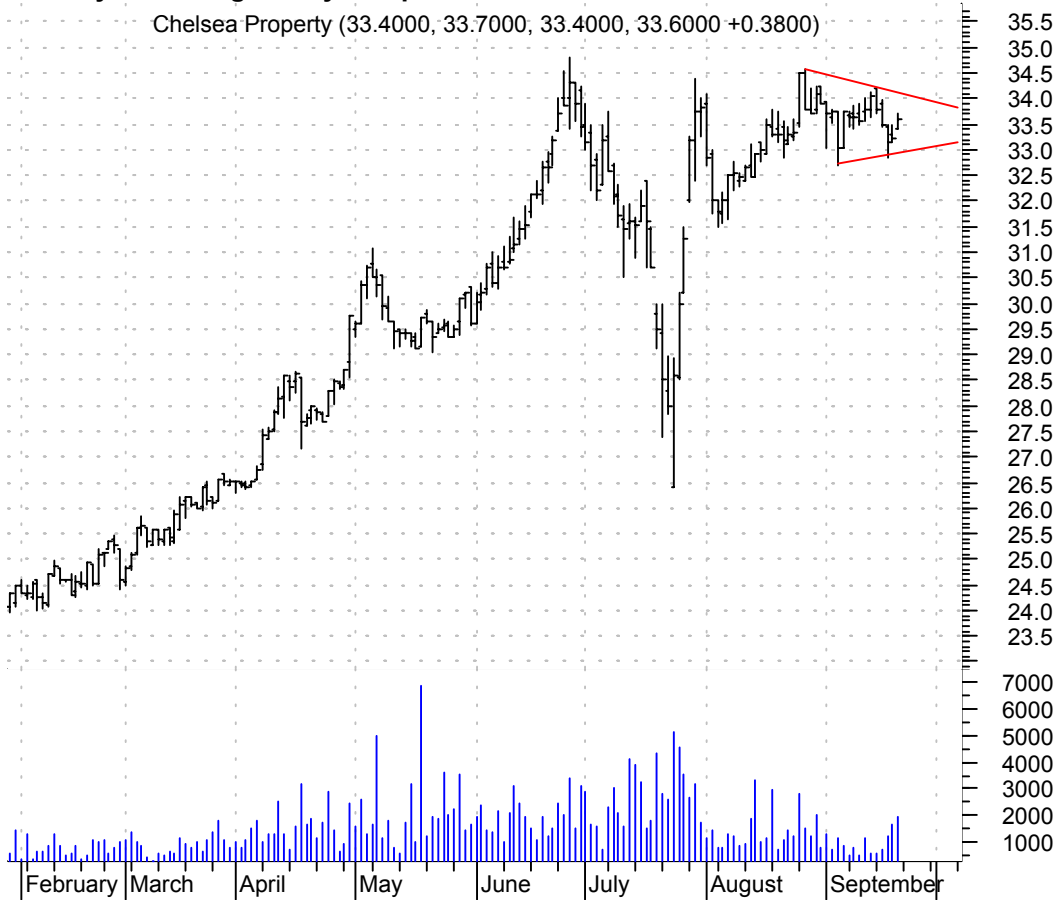
**COCO bull pennant / buy on upside breakout on good volume**

Corinthian Colle (36.4000, 36.6500, 35.8700, 36.5500 +0.3600)



**CPG symm. triangle / buy on upside breakout on increased volume**

Chelsea Property (33.4000, 33.7000, 33.4000, 33.6000 +0.3800)



**CPTS symm. triangle / buy on upside breakout on increased volume**

Conceptus Inc:NA (14.7500, 14.7800, 14.5300, 14.7500 -0.0100)



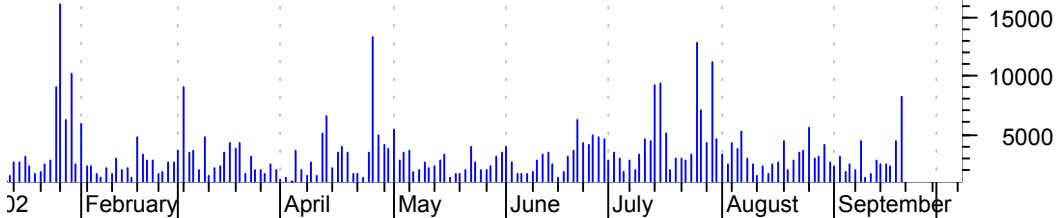
**CPWM symm. triangle / buy on upside breakout on good volume**

Cost Plus Inc:NA (26.2600, 26.2700, 24.6100, 25.5500 +0.2300)



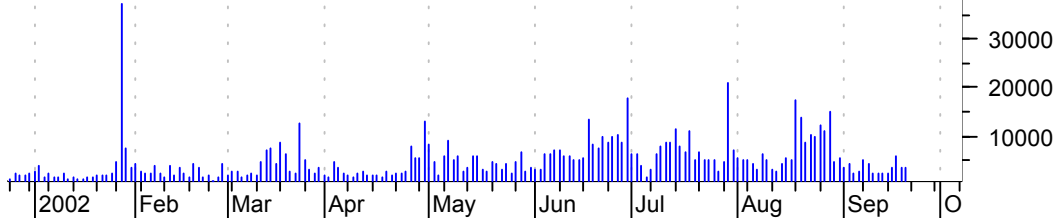
**CVD symm. triangle / buy on upside breakout on larger than average volume**

Covance Inc:NYSE (18.5500, 19.6700, 18.4500, 19.5900 +1.1900)



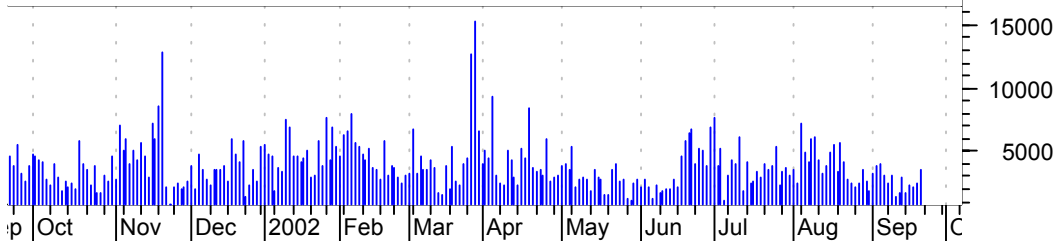
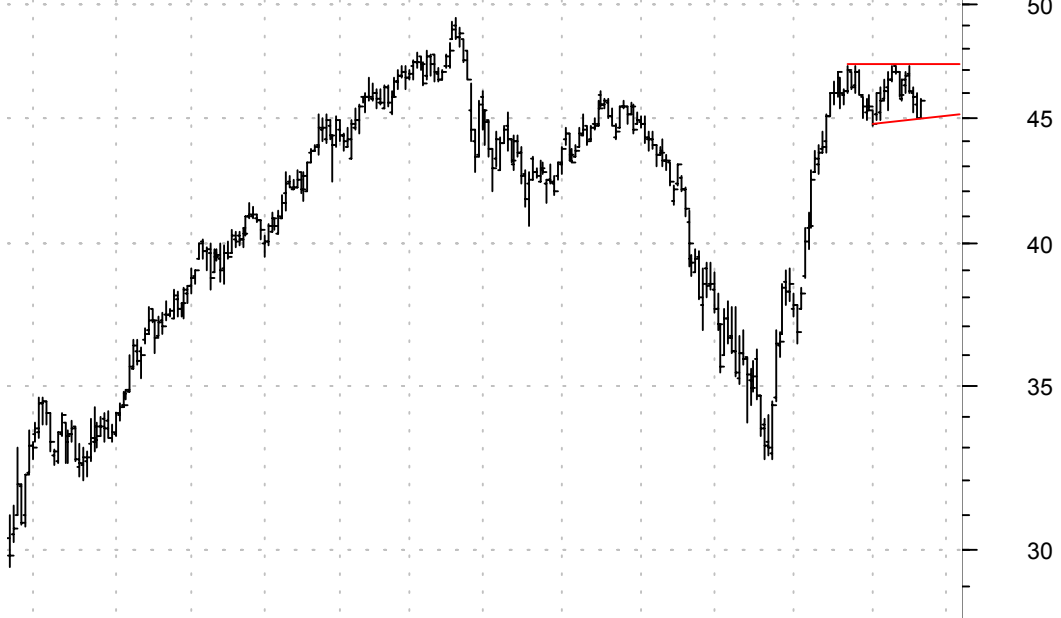
**CVH symm. triangle / buy on upside breakout on increased volume**

Coventry Corp:NY (31.4600, 31.5000, 30.8900, 31.2000 -0.2500)



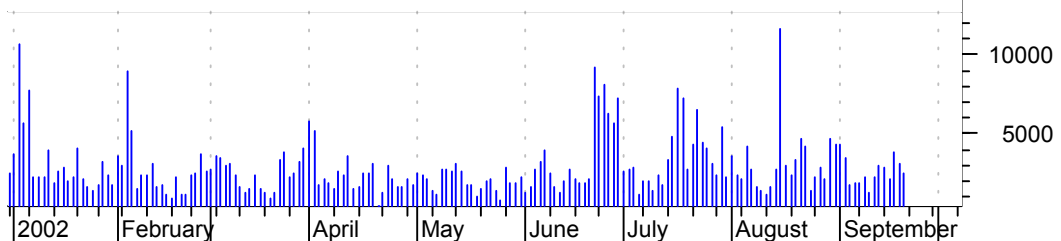
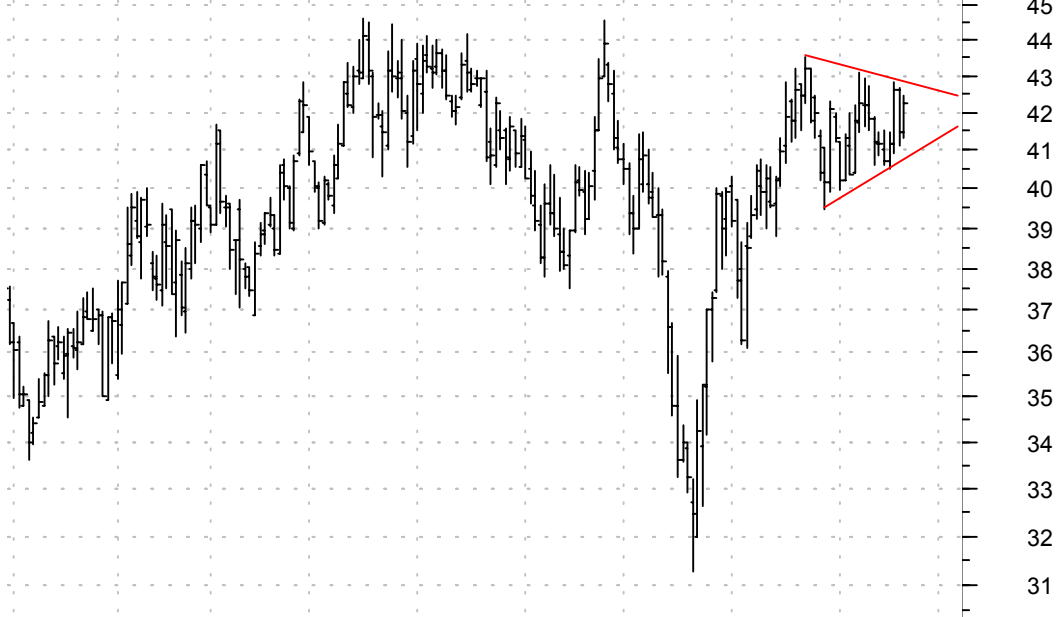
**DLX asc. triangle / buy on upside breakout on increased volume**

Deluxe Corp:NYSE (44.9500, 45.7500, 44.9300, 45.6800 +0.7500)



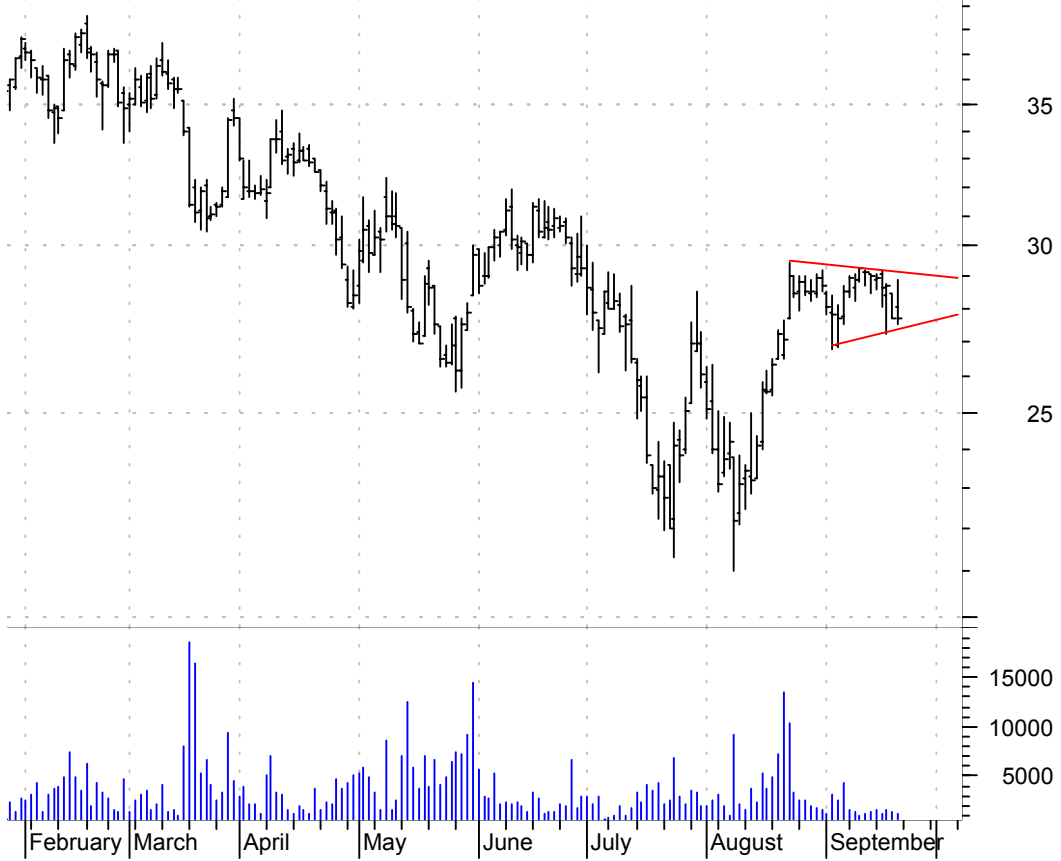
**EDMC symm. triangle / buy on upside breakout on increased volume**

Education Manage (41.4400, 42.4300, 41.3000, 42.2400 +0.7700)



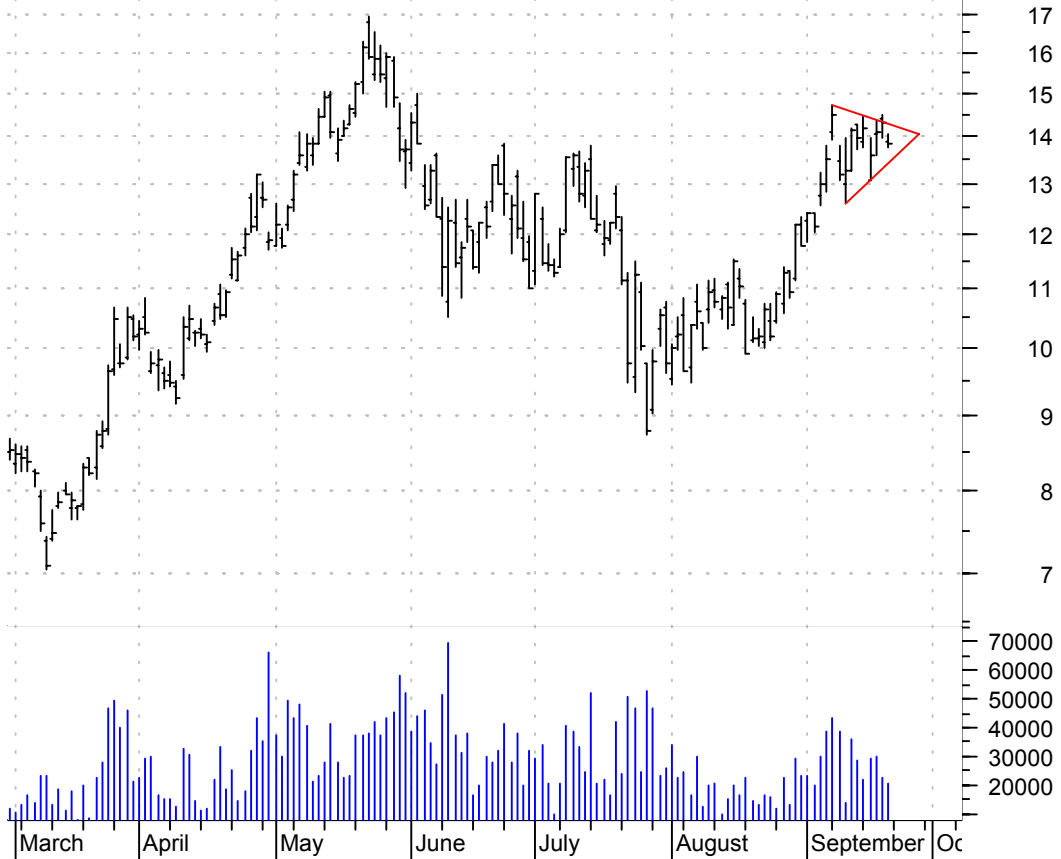
**ELBO symm. triangle / buy on upside breakout on increased volume**

Electronics Bout (28.0600, 28.8900, 27.5100, 27.7300 +0.0200)



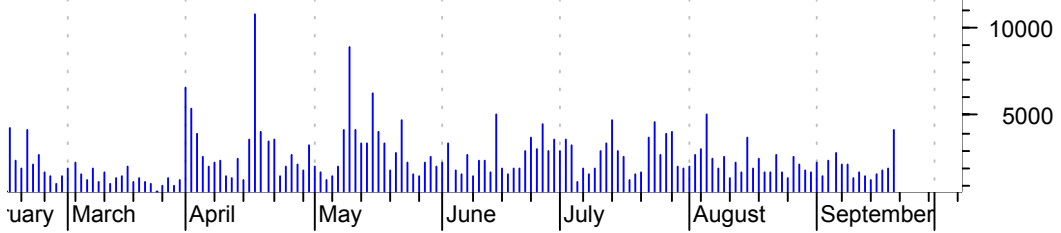
**GFI symm. triangle / buy on upside breakout on increased volume**

Gold Field Ltd A (13.9000, 14.0500, 13.7500, 13.8400 -0.4600)



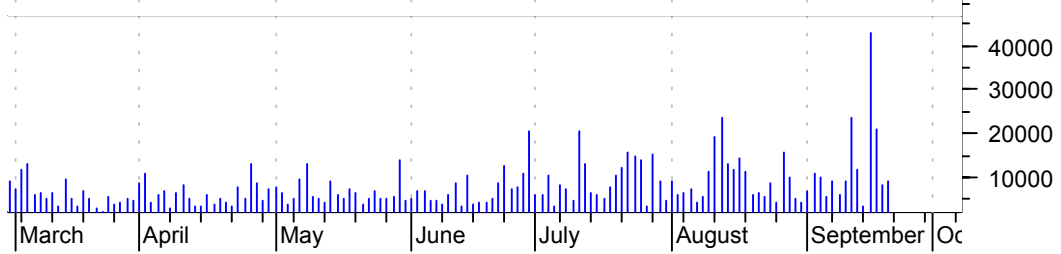
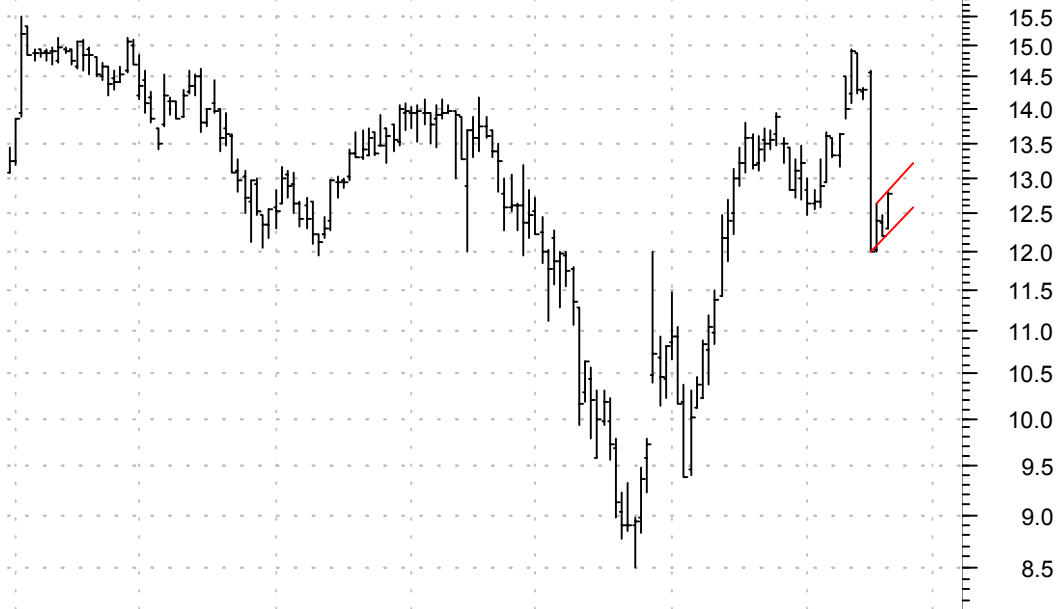
**IDCC asc. triangle / buy on upside breakout on larger than average volume**

Interdigital Com (8.9700, 9.6000, 8.9500, 9.0000 +0.0800)



**IGL bear flag / sell on downside breakout on increased volume**

IMC Global Inc:N (12.3000, 12.8000, 12.2900, 12.7600 +0.5600)





**INGR symm. triangle / buy on upside breakout on increased volume**

Intergraph Corp: (16.7900, 16.7900, 16.3500, 16.6900 +0.2900)



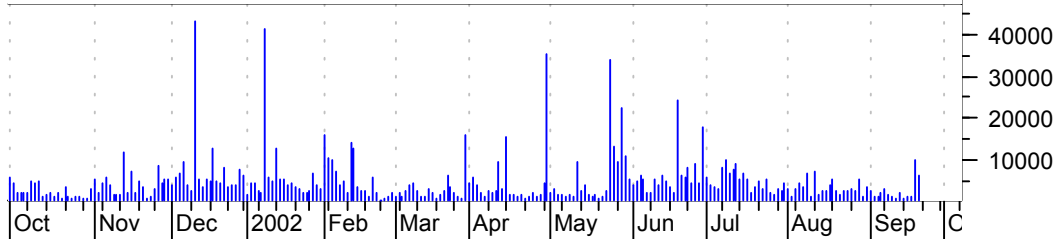
**ITMN falling wedge / buy on upside breakout on increased volume**

Intermune Inc:OT (27.8800, 28.3700, 27.2500, 27.6000 -0.2600)



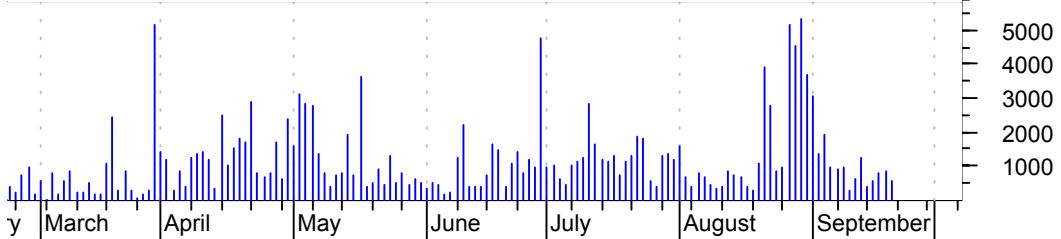
**ITRU symm. triangle / buy on upside breakout on increased volume**

Intertrust Techn (2.7300, 2.8700, 2.6800, 2.8500 +0.1000)



**JAH symm. triangle / buy on upside breakout on increased volume**

Jarden Corp:NYSE (25.4000, 26.7000, 25.4000, 26.6000 +1.2000)



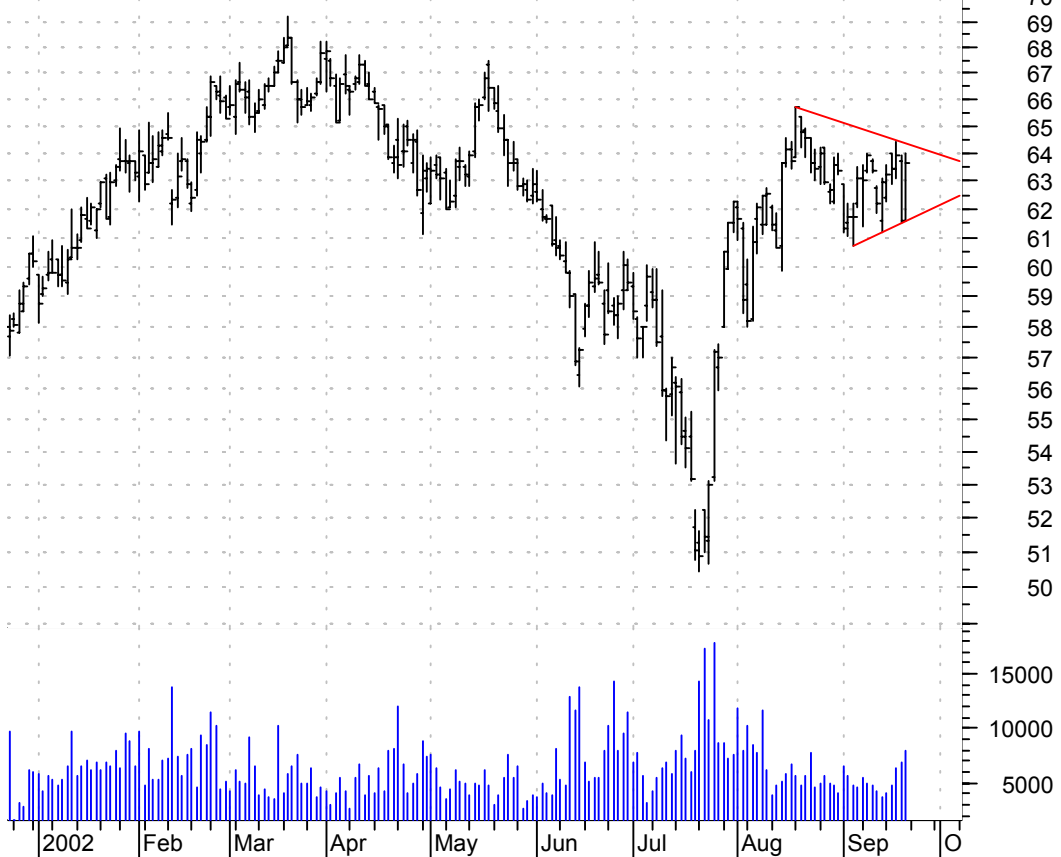
**LQMT symm. triangle / buy on upside breakout on increased volume**

LIQUIDMETAL TECH (6.0200, 7.2500, 6.0000, 7.1900 +1.0900)



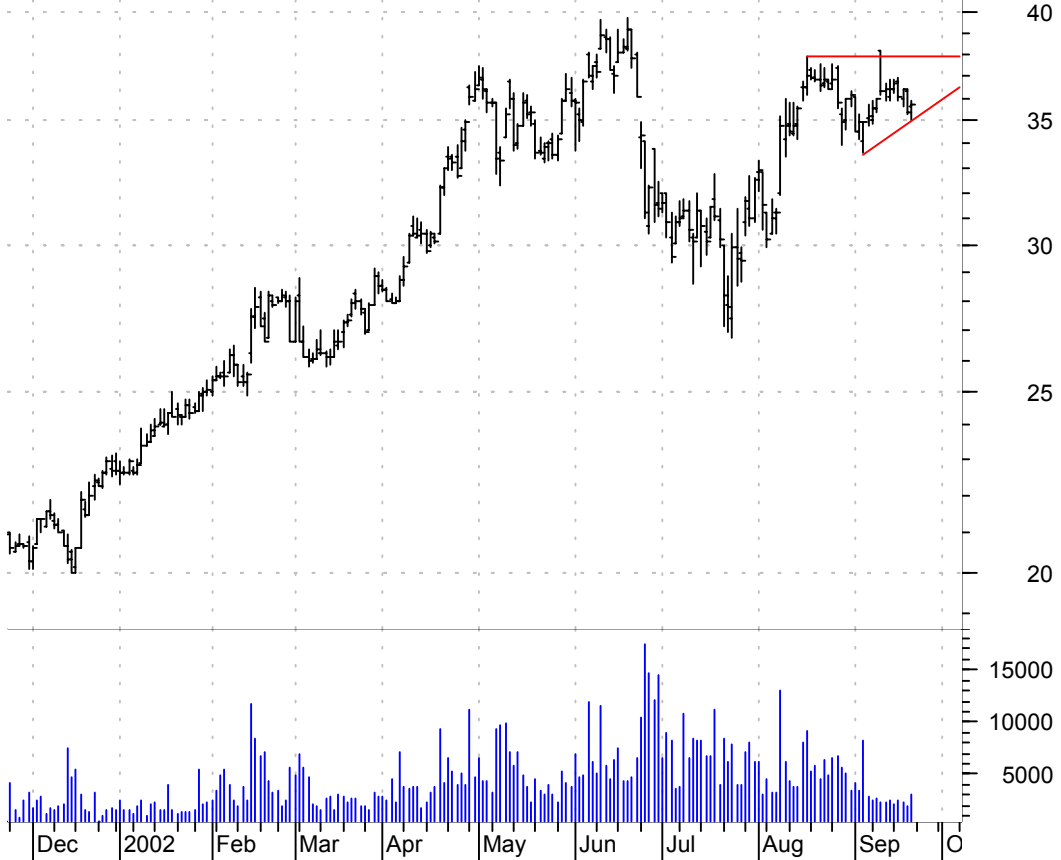
**MHP symm. triangle / buy on upside breakout on larger than average volume**

McGraw-Hill Cos: (61.6100, 64.0000, 61.6100, 63.6400 +2.0700)



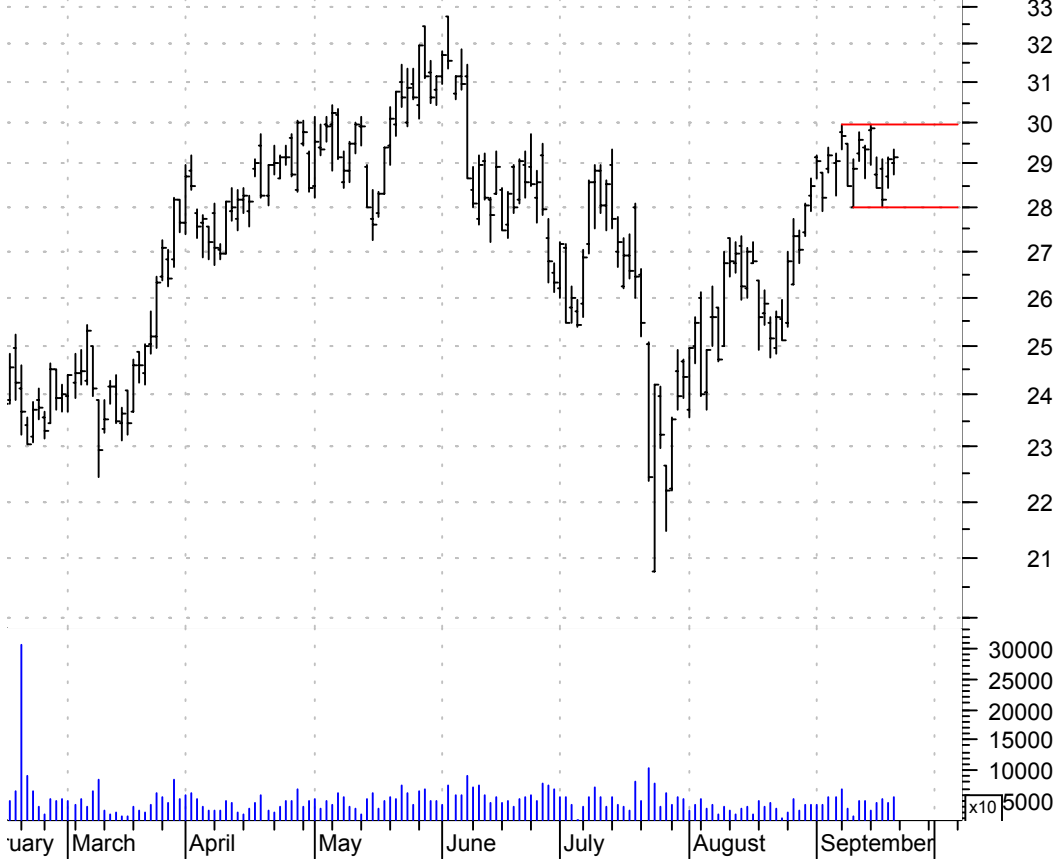
**MME sloppy asc. triangle / buy on upside breakout on increased volume**

Mid Atlantic Med (35.6500, 35.8400, 35.0500, 35.7000 +0.3400)



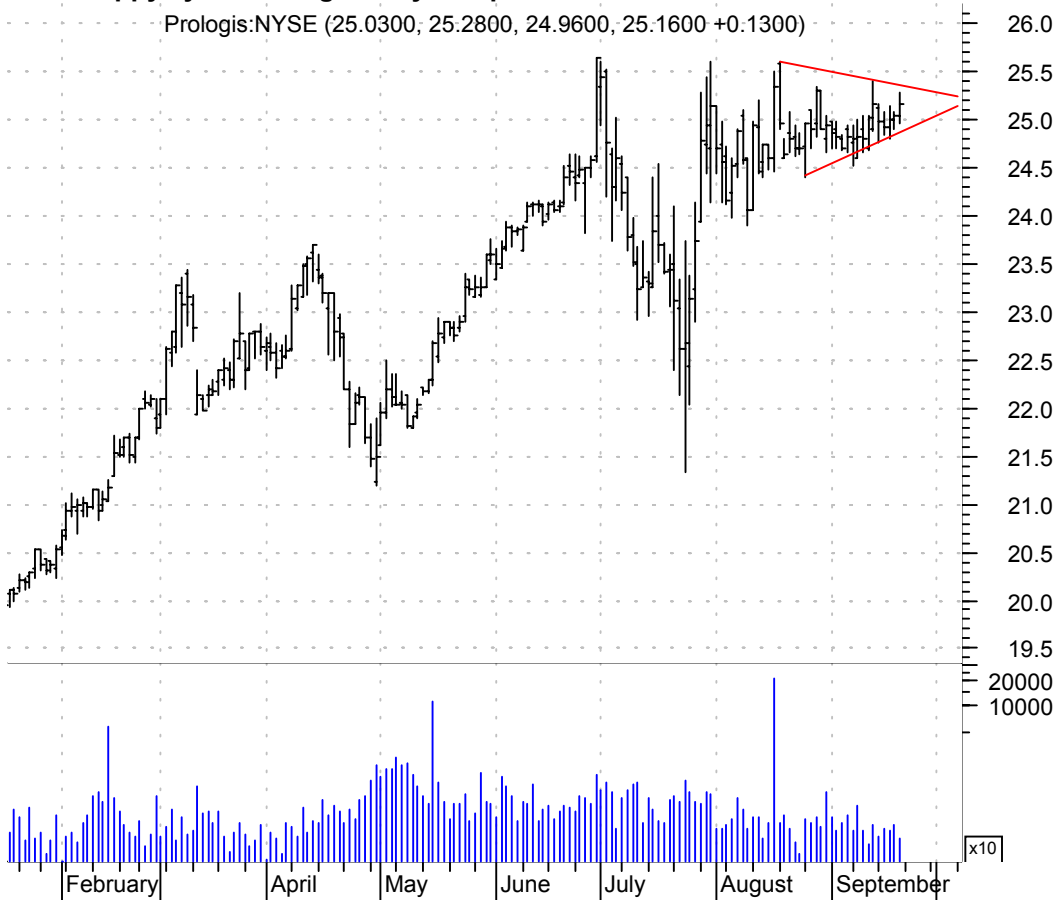
**NEM rectangle / buy on upside breakout on increased volume**

Newmont Mining C (29.0000, 29.3500, 28.7500, 29.1500 +0.0200)



**PLD sloppy symm. triangle / buy on upside breakout on increased volume**

Prologis:NYSE (25.0300, 25.2800, 24.9600, 25.1600 +0.1300)



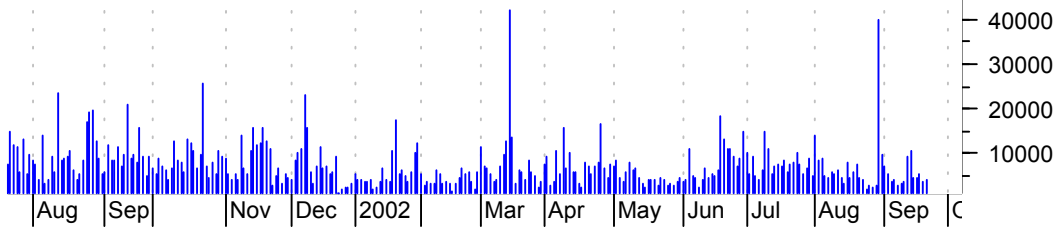
**PRX symm. triangle / buy on upside breakout on increased volume**

Pharmaceutical R (27.3000, 28.1000, 27.3000, 27.9800 +0.6900)



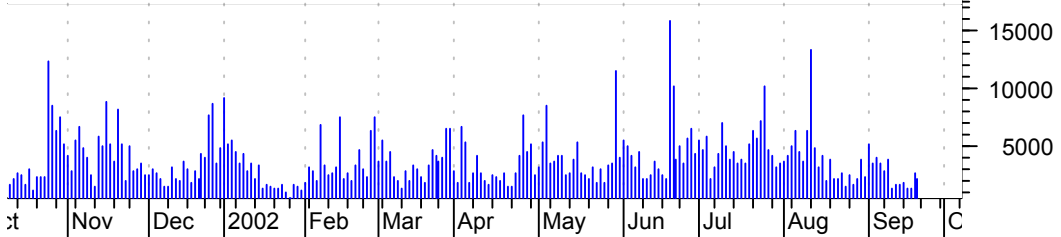
**RBK bear flag / sell on downside breakout on increased volume**

Reebok Intl Ltd: (24.7200, 24.9900, 24.3900, 24.5900 -0.0300)



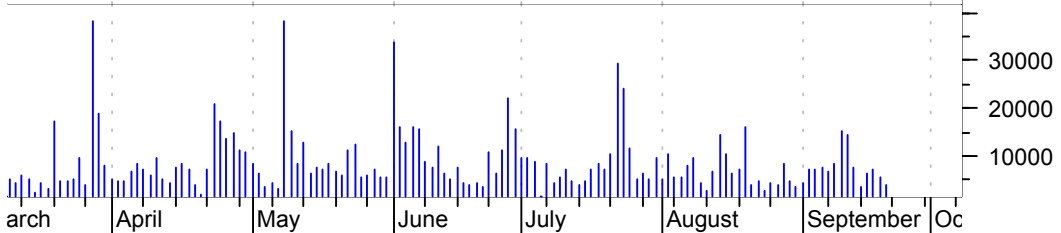
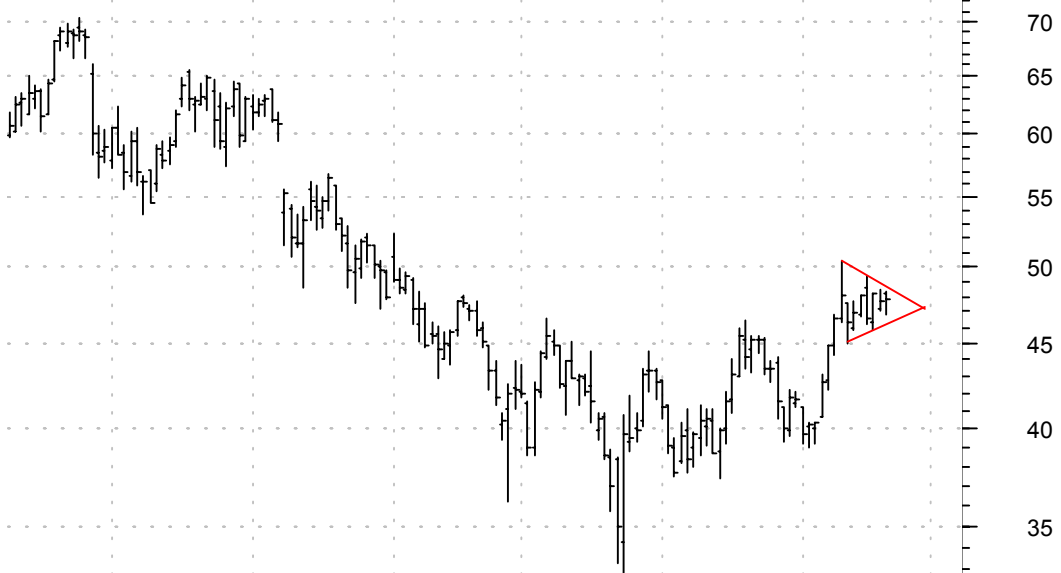
**RKY symm. triangle / buy on upside breakout on increased volume**

Coors (Adolph) I (60.3500, 60.7800, 60.0700, 60.5700 +0.2300)



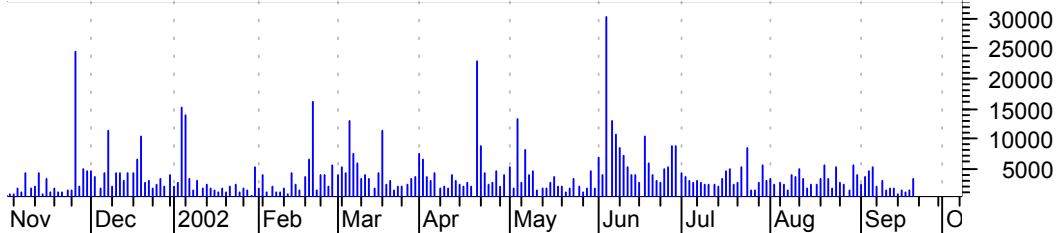
**ROOM bull pennant / buy on upside breakout on increased volume**

Hotel.Com CI A:O (48.2000, 48.2600, 46.7800, 47.7800 +0.0900)



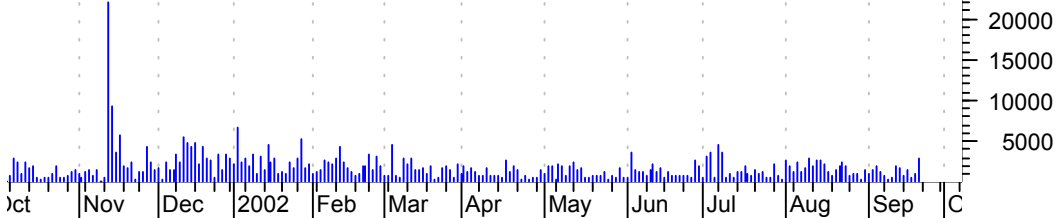
**SBGI symm. triangle / buy on upside breakout on increased volume**

Sinclair Broadca (12.8100, 13.1900, 12.7200, 12.8500 +0.1700)



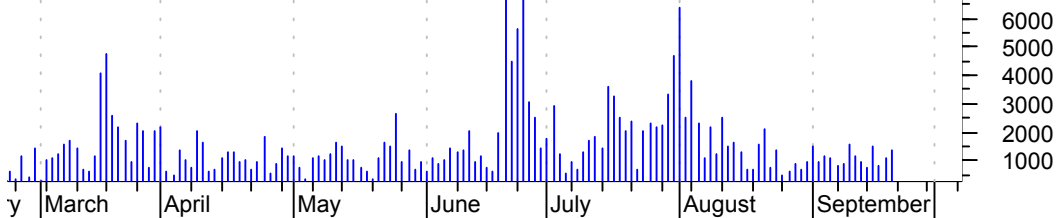
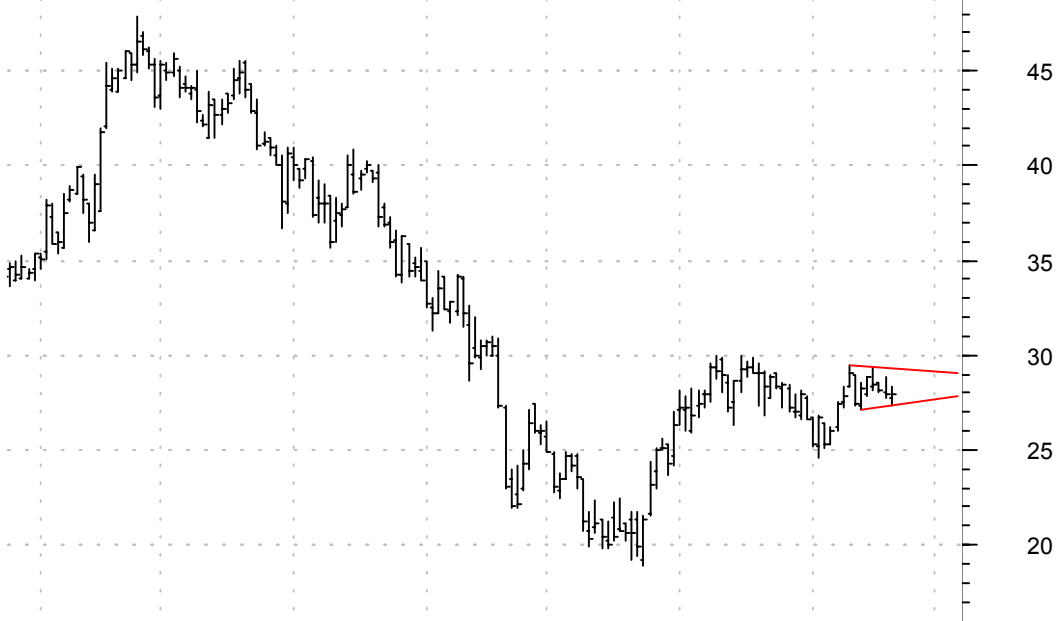
**SCHS bullish flag / buy on upside breakout on increased volume**

School Specialty (24.0000, 24.1300, 23.0000, 23.7000 +0.9500)



**SRDX small symm. triangle / buy on upside breakout on increased volume**

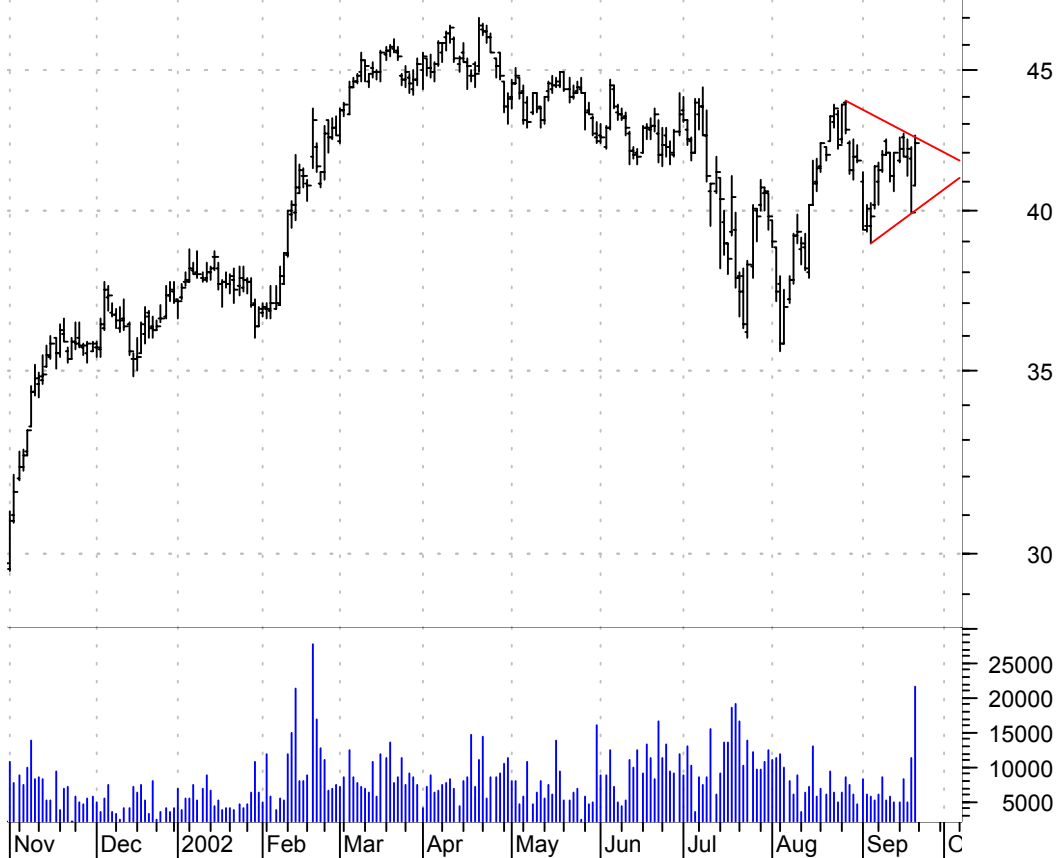
Surmodics Inc:NA (27.7800, 28.3300, 27.3500, 27.9300 +0.0300)





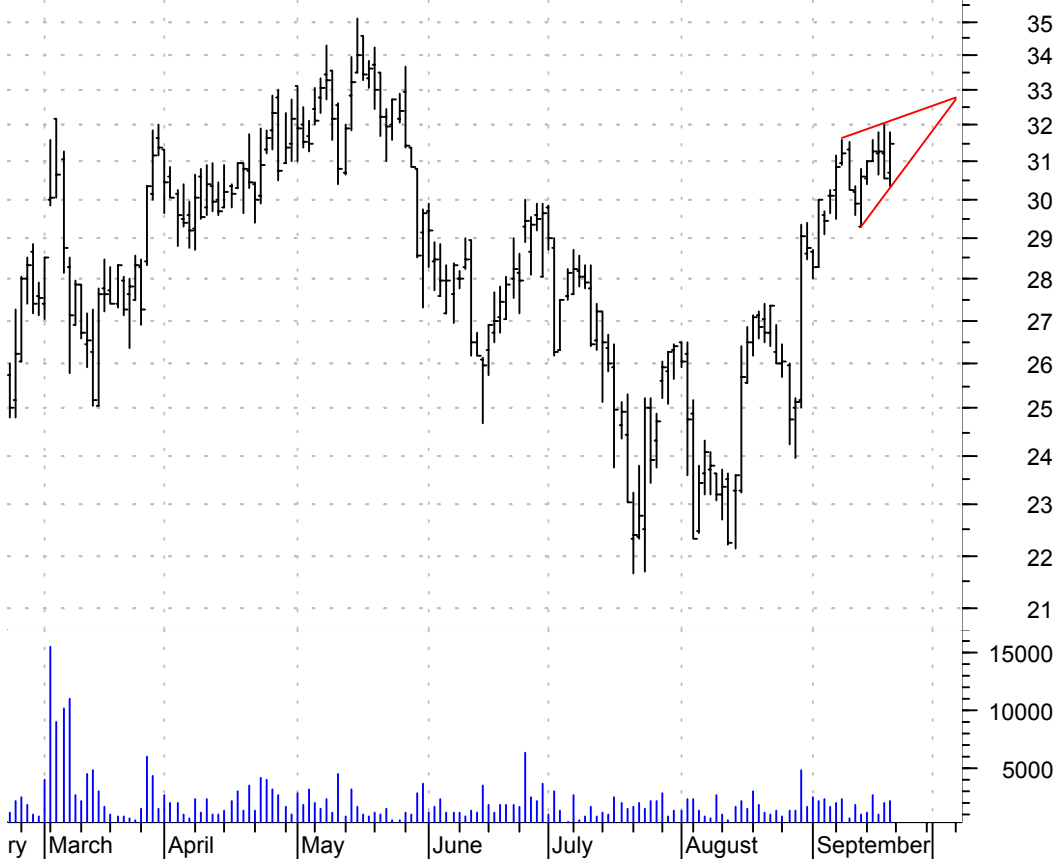
**TRB symm. triangle / buy on upside breakout on larger than average volume**

Tribune Co:NYSE (40.8500, 42.6400, 40.8500, 42.3400 +2.3900)



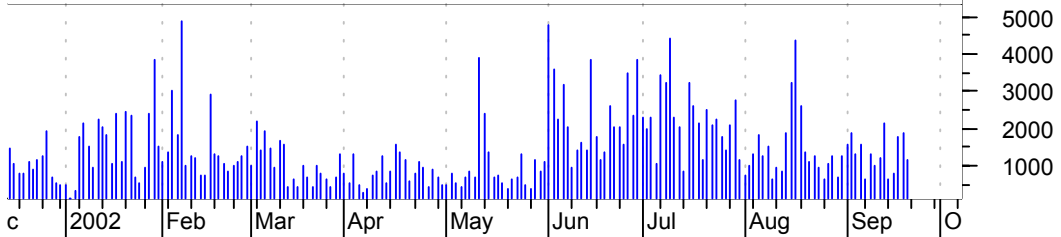
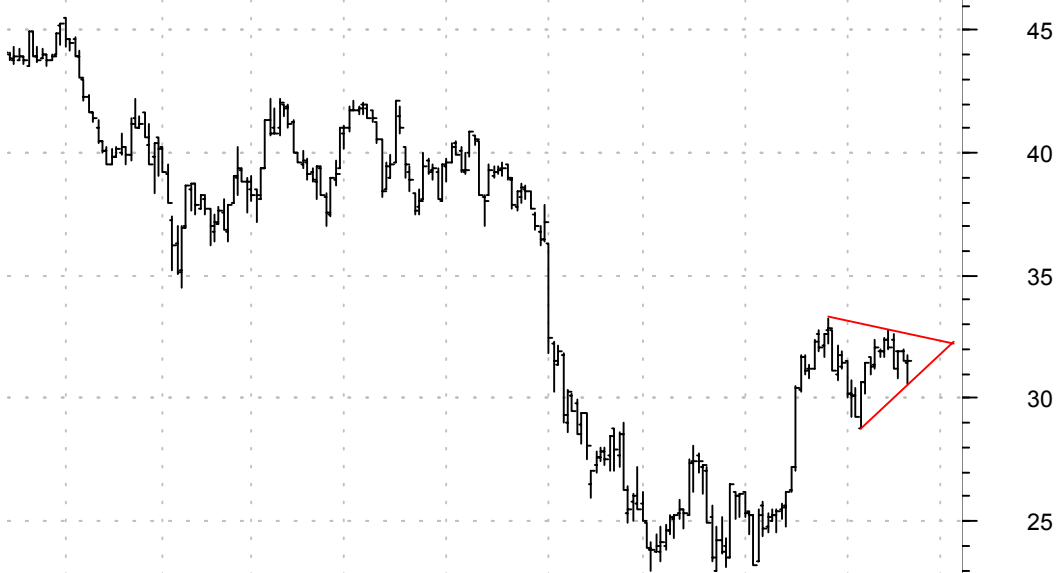
**UOPX rising wedge / sell on downside breakout on increased volume**

APOLLO GRP-UNIV (30.6800, 31.8000, 30.3200, 31.5000 +0.9600)



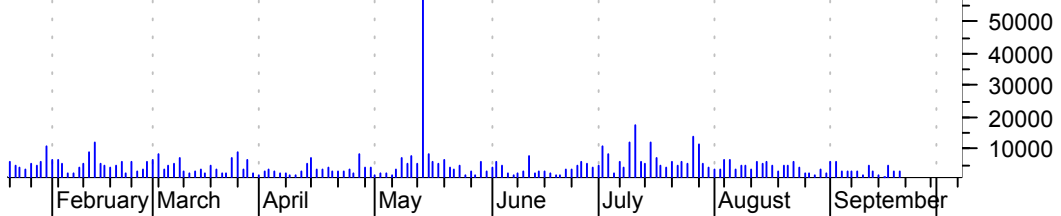
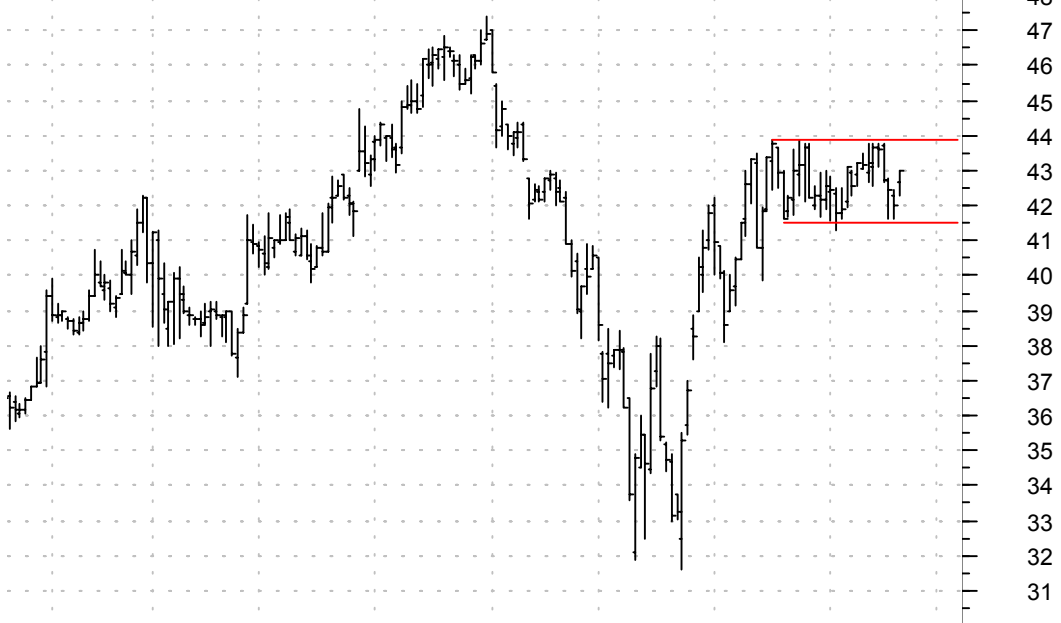
**USM symm. triangle / buy on upside breakout on increased volume**

US Cellular:AMEX (31.4500, 31.7800, 30.6000, 31.5600 +0.0600)

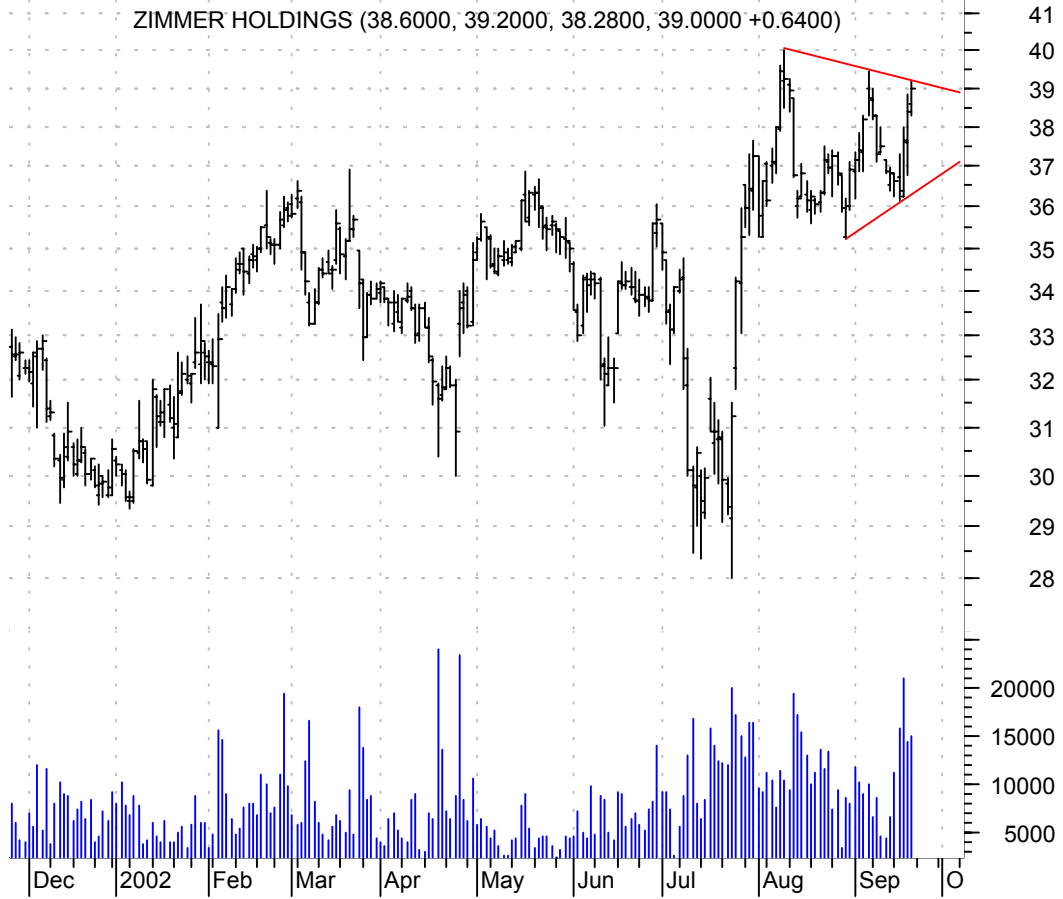


**VAR rectangle / buy on upside breakout on increased volume**

Varian Associate (42.6500, 43.0100, 42.2800, 43.0000 +1.0000)



**ZMH symm. triangle / buy on upside breakout on good volume**



**chartpatterns.com**

**Chart Pattern Analysis for Timing the Markets**

[KMatras@aol.com](mailto:KMatras@aol.com)