

**ANH symm. tri. / buy on upside breakout on increased volume**

Anworth Mortgage (11.8200, 12.0000, 11.7100, 11.9400 +0.1400)



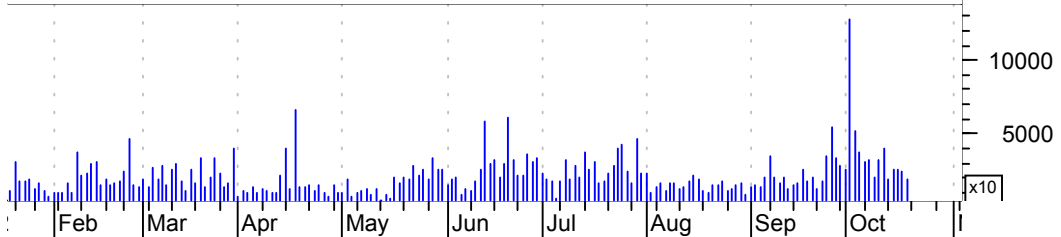
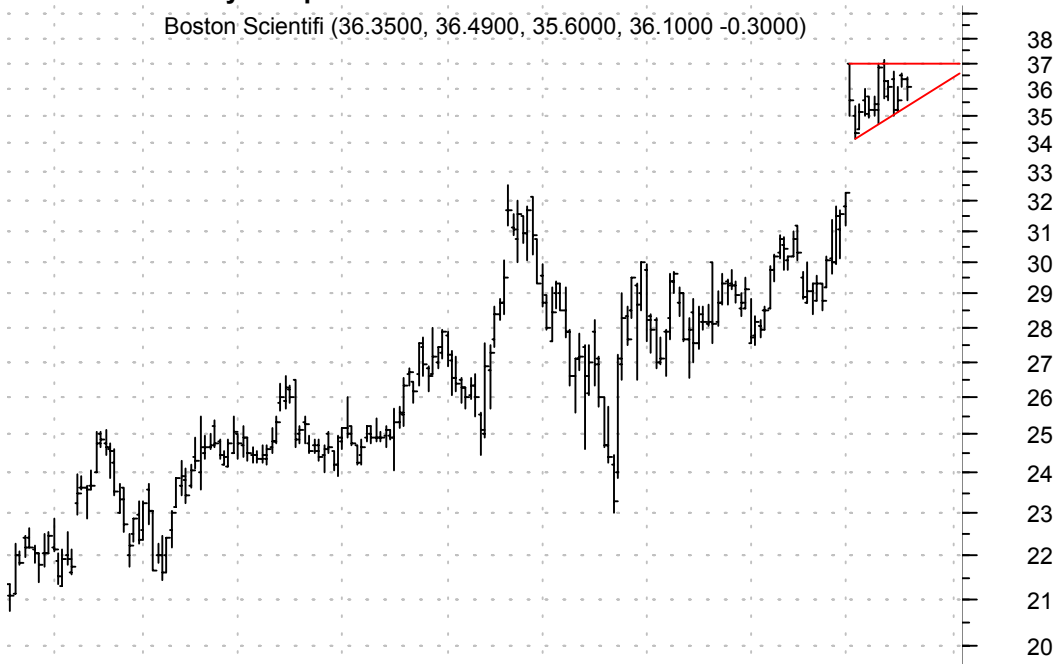
**BIO symm. tri. / buy on upside breakout on increased volume**

Bio-Rad Laborato (41.2100, 41.7400, 40.8500, 41.6500 +0.4500)



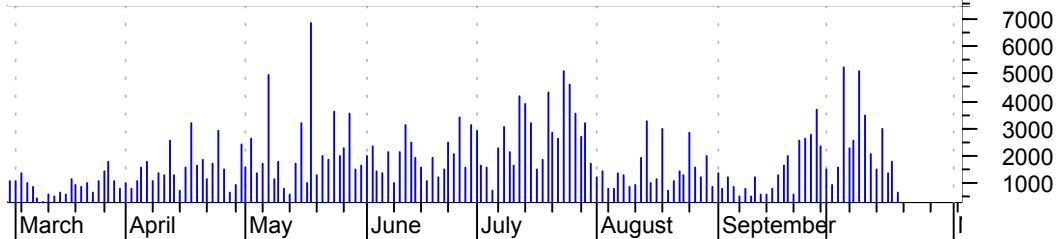
**BSX asc. tri. / buy on upside brkout on increased volume**

Boston Scientific (36.3500, 36.4900, 35.6000, 36.1000 -0.3000)



**CPG rising wedge / sell on downside brkout on increased volume**

Chelsea Property (31.9800, 32.2300, 31.9000, 31.9000 -0.0800)



**CRL asc. tri. / buy on upside brkout on increased volume**

Charles River La (39.9500, 40.0000, 39.4400, 39.7700 -0.1800)



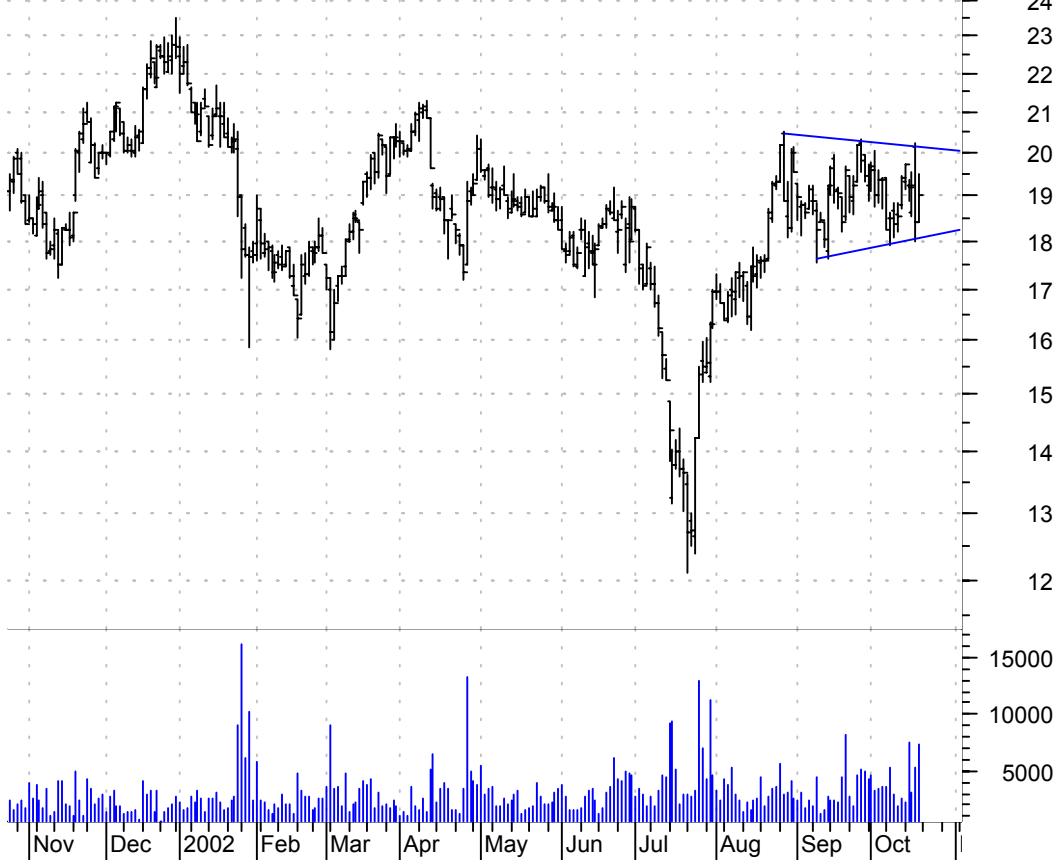
**CSBCD symm. tri. / buy on upside brkout on increased volume**

Citizens South B (9.6500, 9.8000, 9.6500, 9.7600 -0.0200)



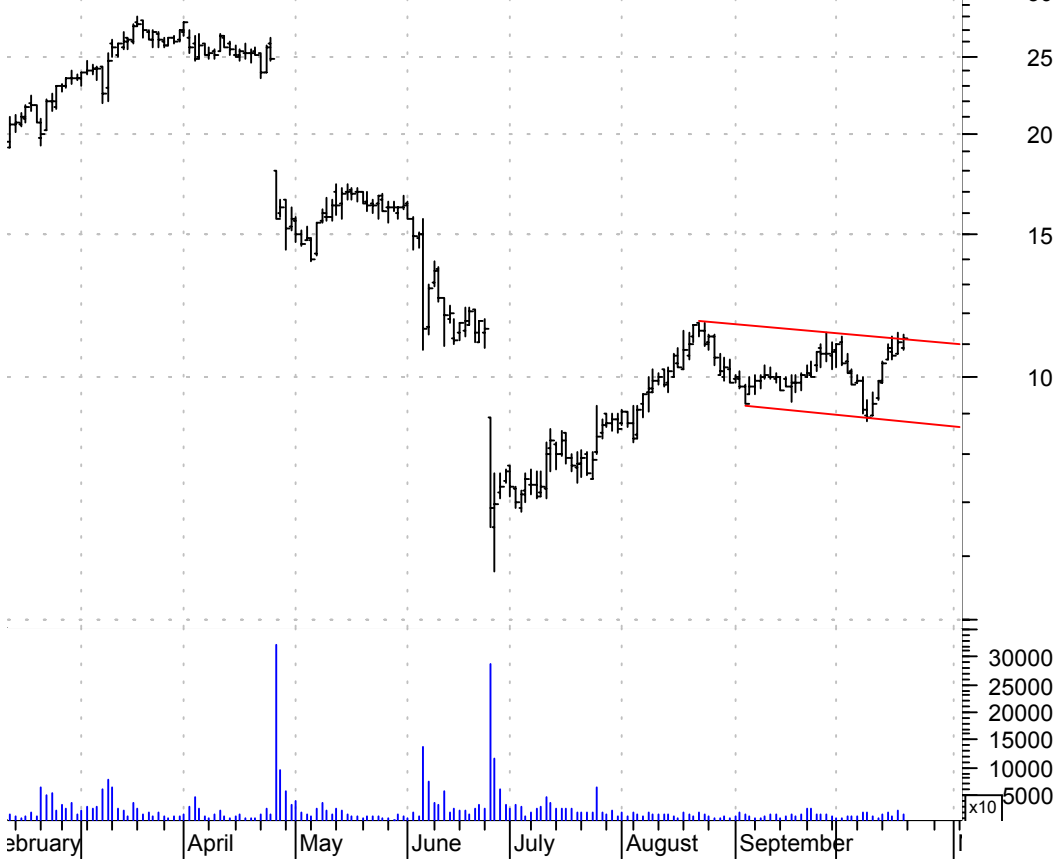
**CVD symm. tri. / buy on upside breakout on good volume**

Covance Inc:NYSE (18.4000, 19.5000, 18.4000, 19.0300 +0.6300)



**CYTC bullish flagging / buy on upside breakout on increased volume**

Cytc Corp:NASNM (10.8500, 11.2600, 10.8000, 11.1700 +0.1200)



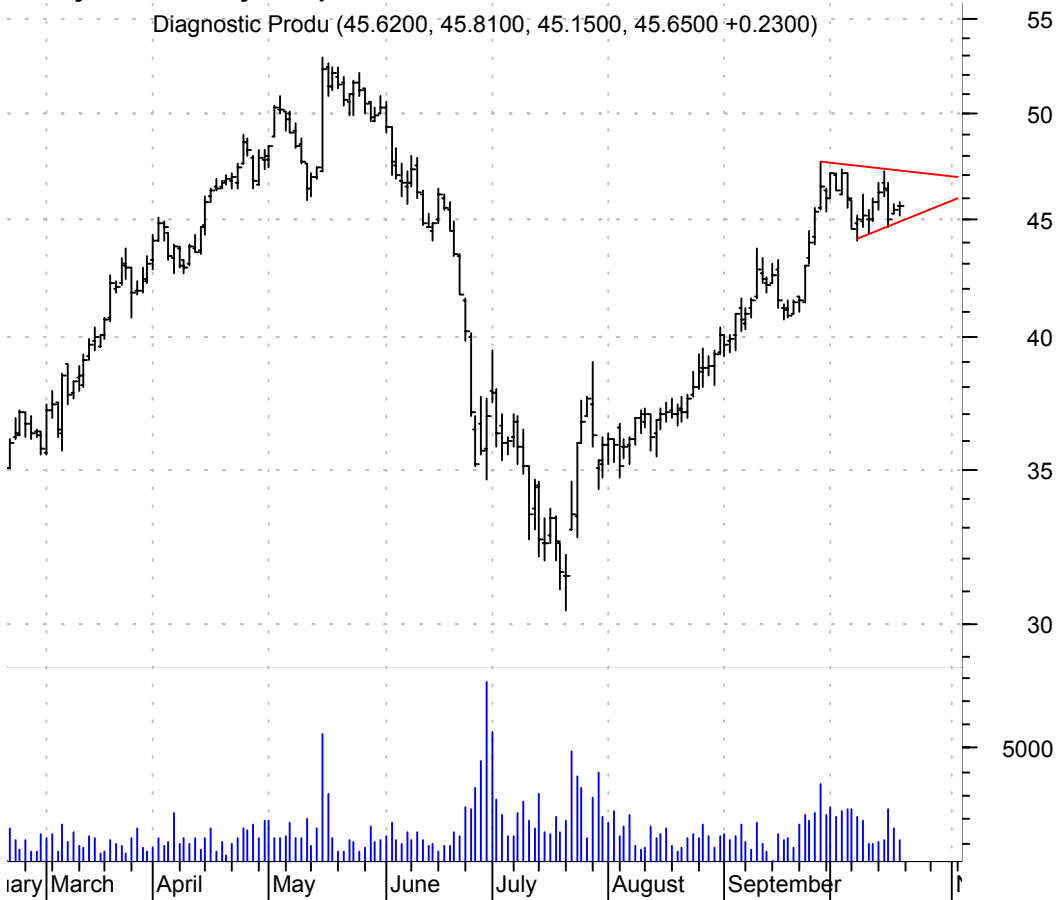
**DF h. & sh. / sell on downside brkout on increased volume**

Dean Foods:NYSE (38.5000, 38.9700, 38.3000, 38.8200 +0.4600)



**DP symm. tri. / buy on upside brkout on increased volume**

Diagnostic Produ (45.6200, 45.8100, 45.1500, 45.6500 +0.2300)



**DRIV symm. tri. / buy on upside brkout on increased volume**

Digital River In (8.7500, 8.7800, 8.3600, 8.7300 -0.1200)



**FDX symm. tri. / buy on upside brkout on increased volume**

FedEx Corp:NYSE (53.3700, 53.6000, 51.9000, 53.3400 -0.4100)



**HRH symm. tri. / buy on upside brkout on increased volume**

Hilb Rogal & Ha (43.1500, 43.5000, 42.4200, 42.5000 -0.9000)

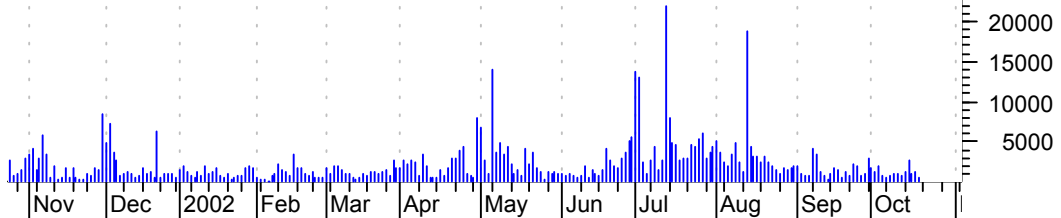
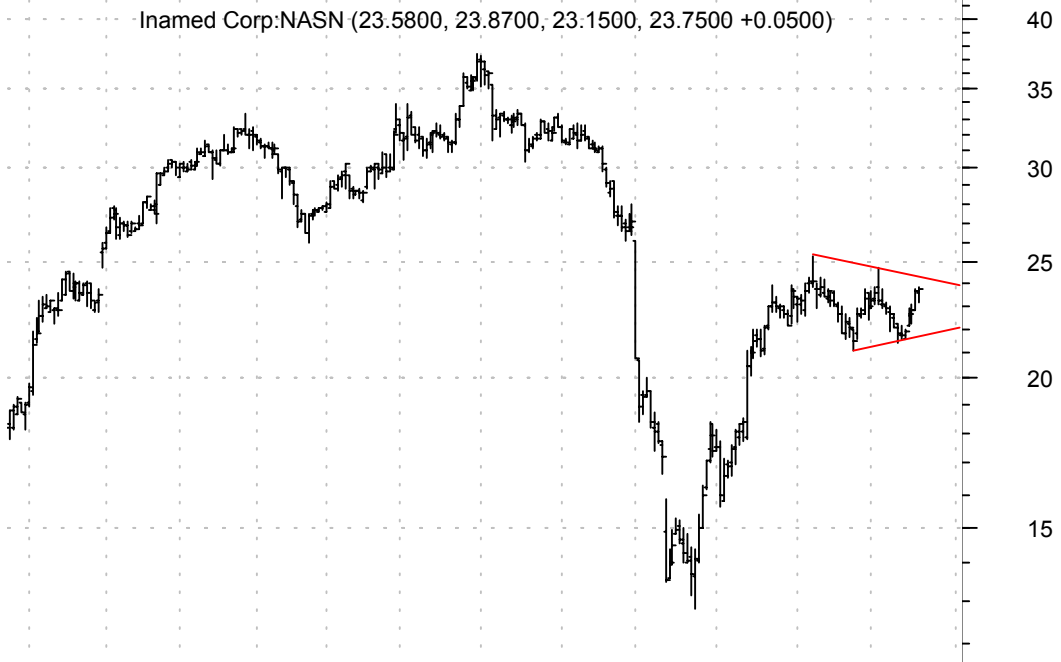


**IDXX asc. tri. / buy on upside brkout on increased volume**

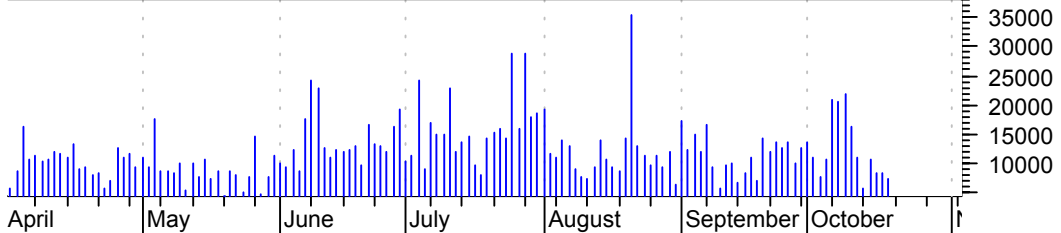
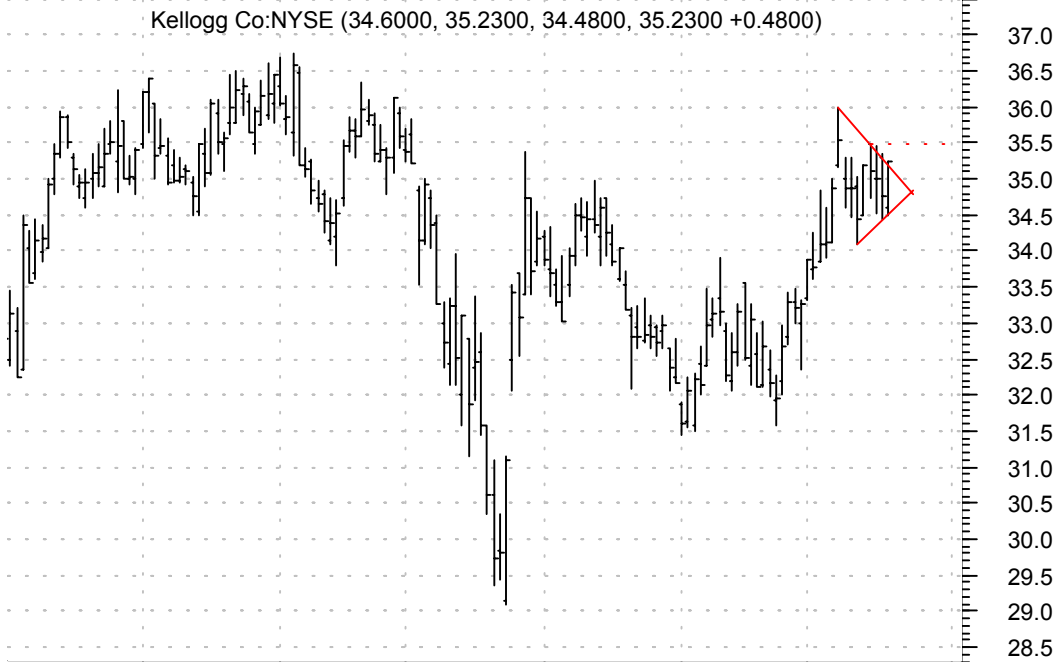
Idexx Laboratori (31.0000, 31.0900, 30.4000, 31.0000 -0.1000)



**IMDC symm. tri. / buy on upside breakout on increased volume**



**K symm. tri. breakout / buy on upside breakout thru red dotted line on increased volume**





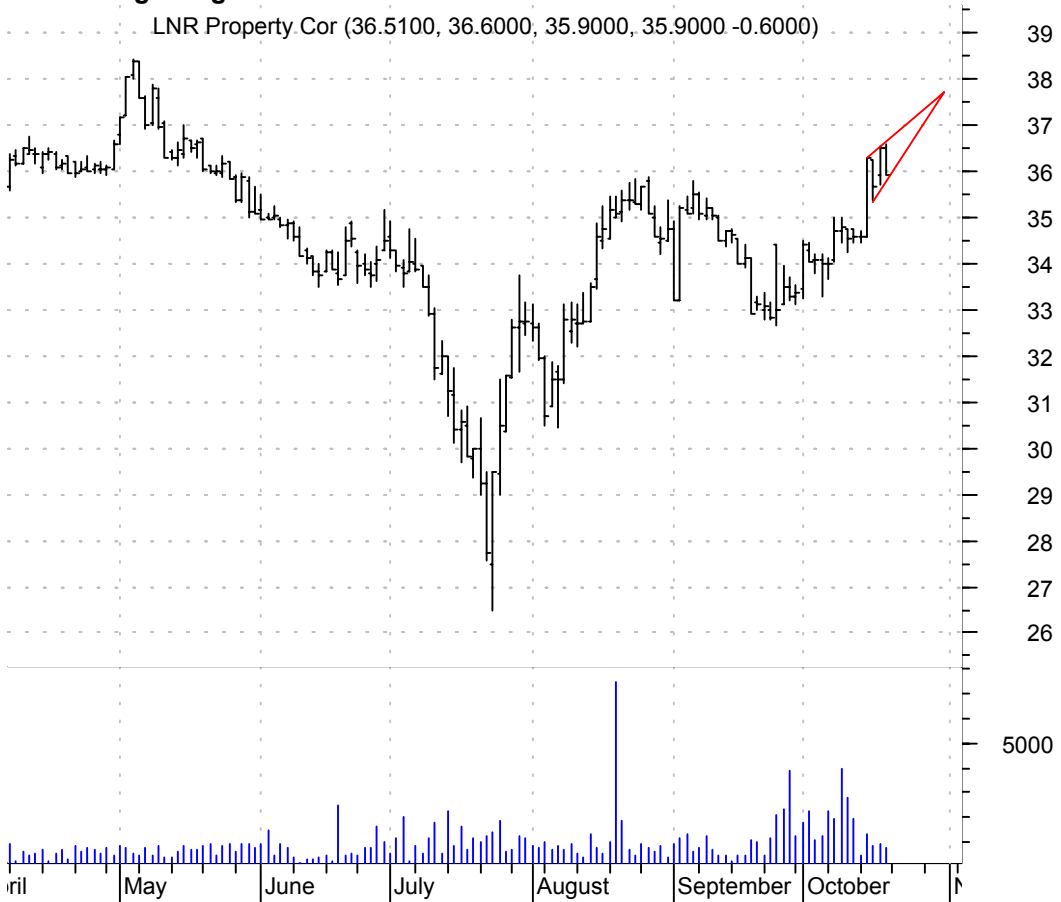
**LMT symm. tri. / buy on upside breakout on increased volume**

Lockheed Martin (56.9500, 59.9300, 56.9500, 59.3800 +1.0800)



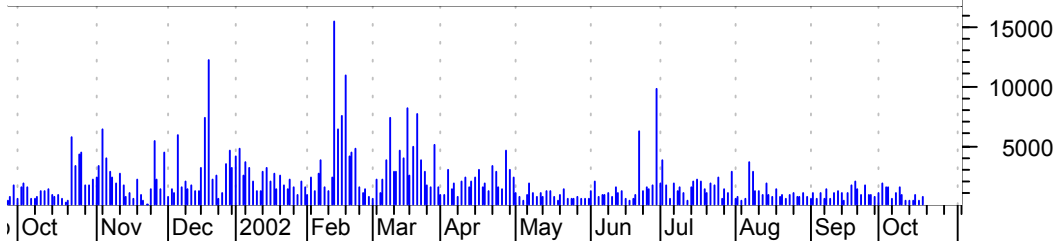
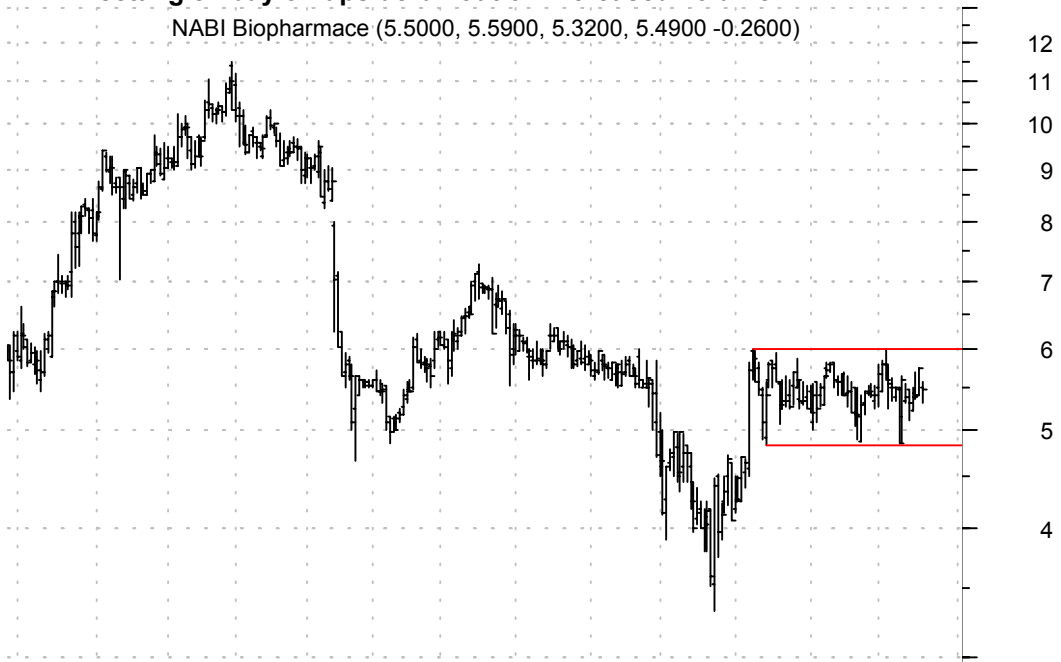
**LNR rising wedge / sell on downside breakout on increased volume**

LNR Property Cor (36.5100, 36.6000, 35.9000, 35.9000 -0.6000)



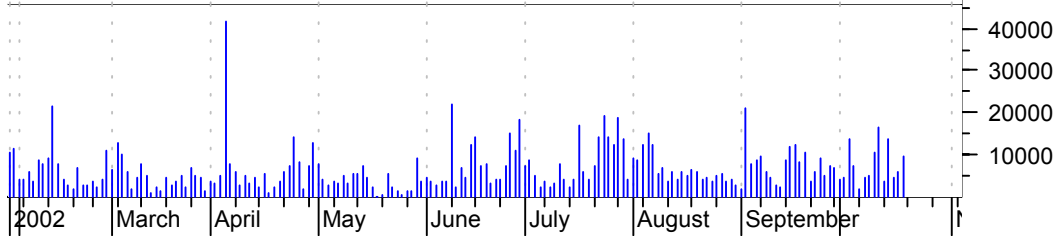
**NABI rectangle / buy on upside brkout on increased volume**

NABI Biopharmace (5.5000, 5.5900, 5.3200, 5.4900 -0.2600)



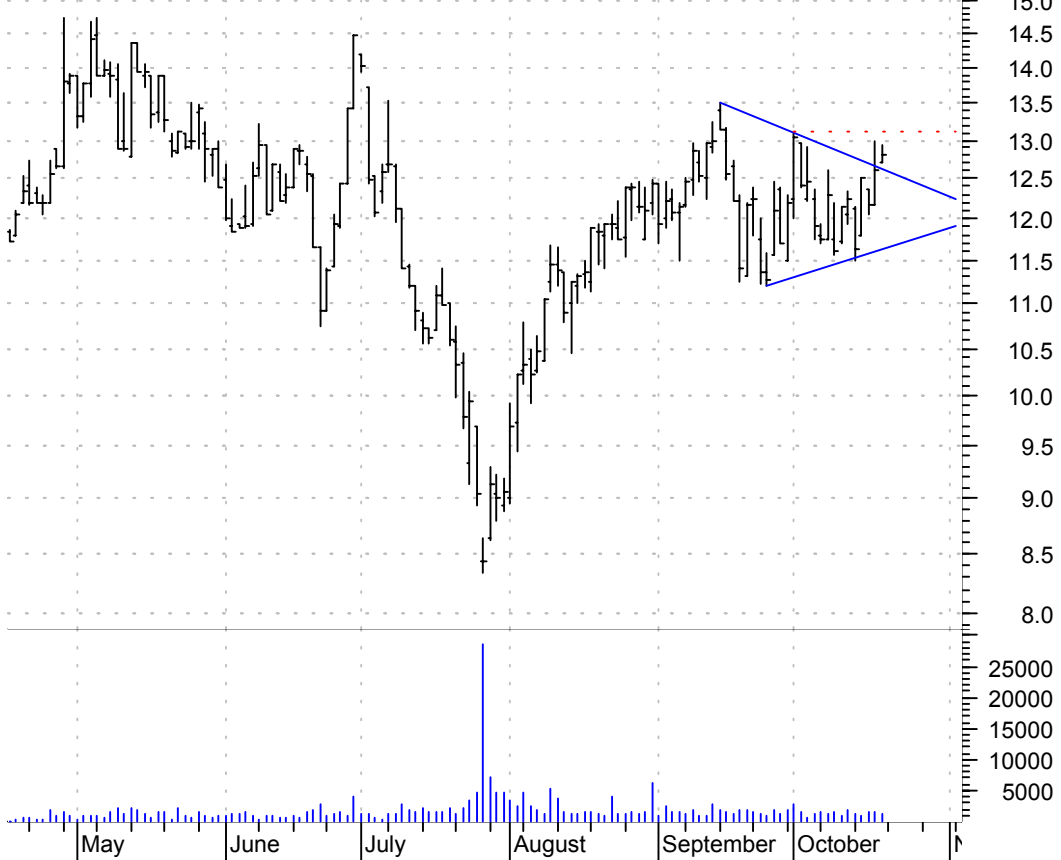
**NSCN symm. tri. (bull flag brkout inside) / 1) buy and use dotted red line (flag failure) as stop out or 2) buy on upside symm. tri. brkout on good volume**

NETSCREEN TECH I (11.4200, 12.7500, 11.3000, 12.7500 +0.5800)



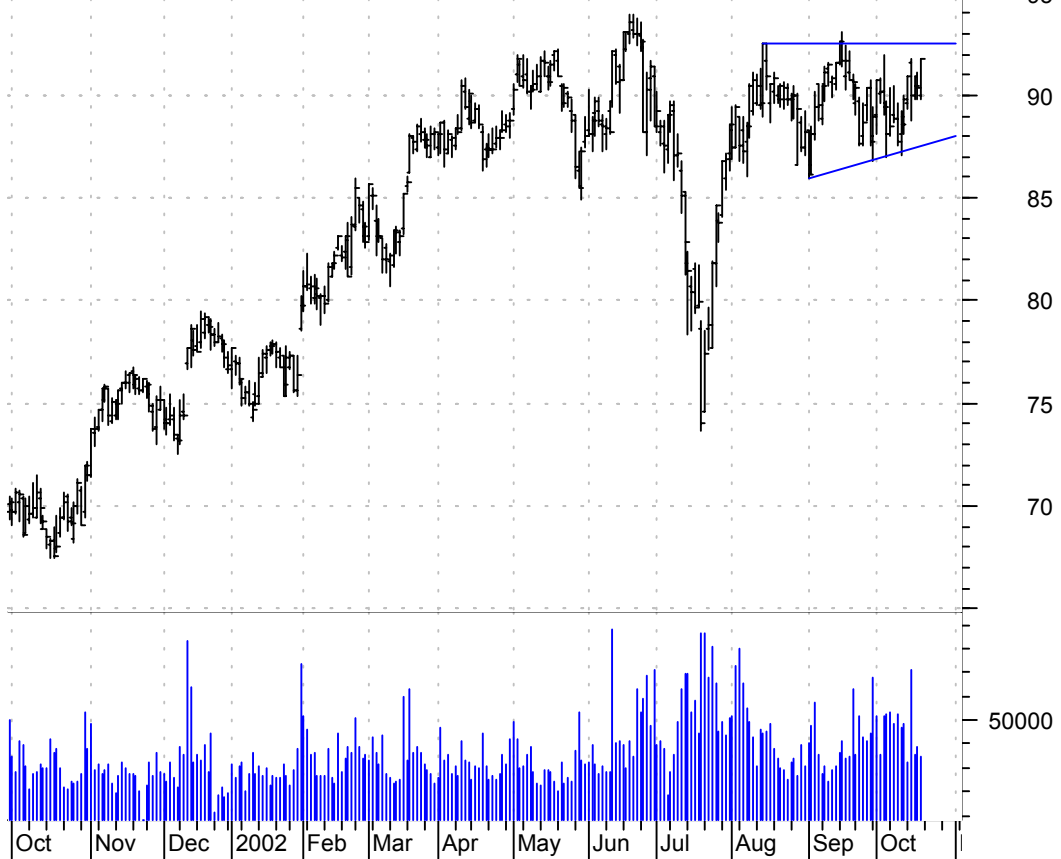
**NUS symm. tri. breakout / buy on upside breakout thru red dotted line on increased volume**

Nu Skin Asia Pac (12.7000, 12.9300, 12.7000, 12.8000 +0.2000)



**PG sloppy asc. tri. / buy on upside breakout on larger than normal volume**

Procter & Gamble (90.0000, 91.7500, 89.8400, 91.7500 +1.4100)



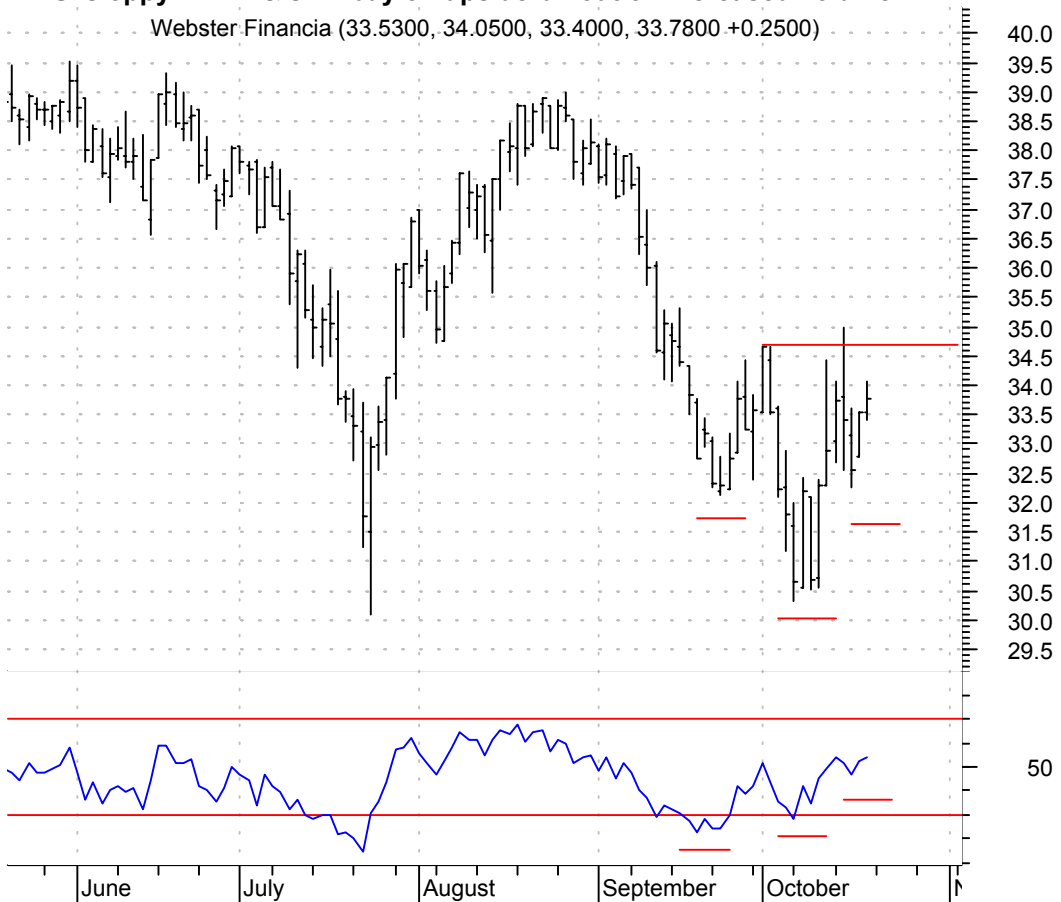
**UN symm. tri. / buy on upside breakout on increased volume**

Unilever Ltd NV: (60.0400, 60.9000, 59.6200, 60.7000 -0.6400)



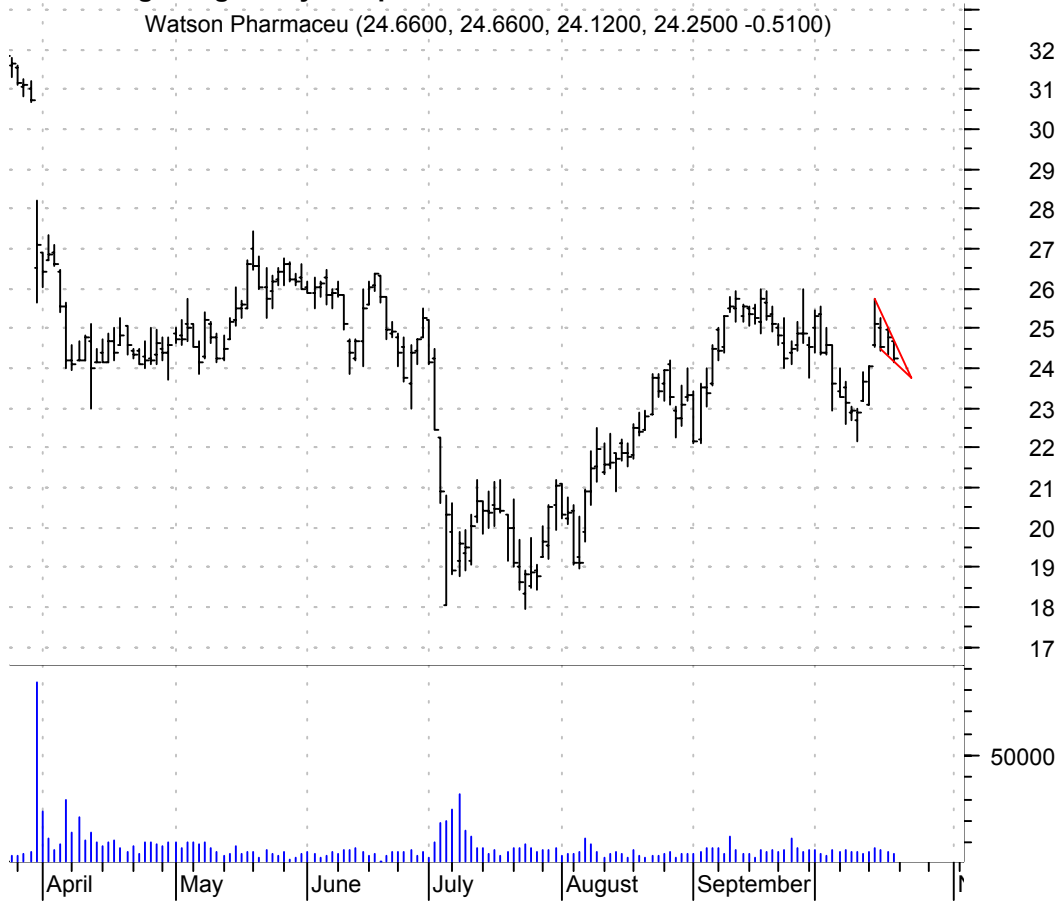
**WBS sloppy inv. h. & sh. / buy on upside breakout on increased volume**

Webster Financia (33.5300, 34.0500, 33.4000, 33.7800 +0.2500)



**WPI falling wedge / buy on upside breakout on increased volume**

Watson Pharmaceu (24.6600, 24.6600, 24.1200, 24.2500 -0.5100)



**chartpatterns.com**

Chart Pattern Analysis for Timing the Markets

[KMatras@aol.com](mailto:KMatras@aol.com)