

**AFCE bullish flagging / buy on upside brkout on increased volume**

AFC Enterprises: (21.3700, 21.9500, 21.3600, 21.7700 +0.4400)



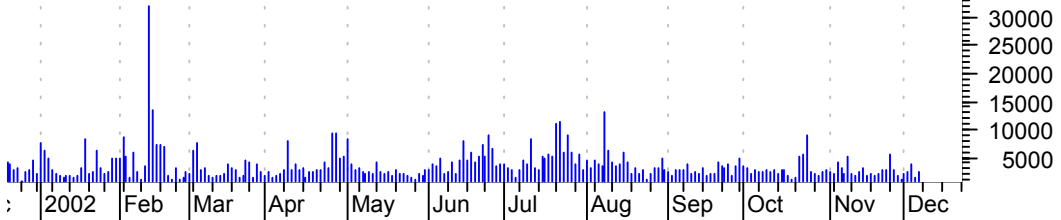
**ABFS h. & sh. / sell on downside brkout on increased volume**

Arkansas Best Co (28.9500, 29.5200, 28.6700, 29.4800 +0.4200)



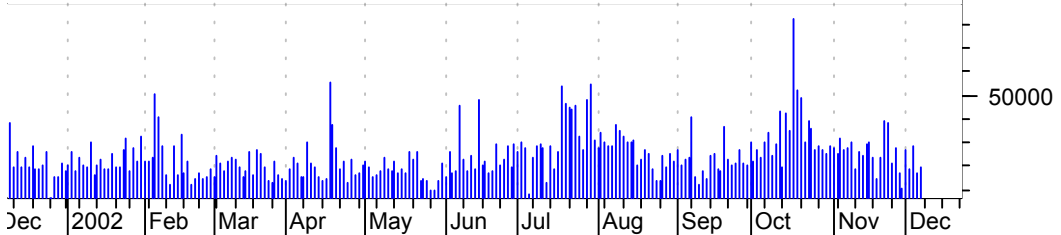
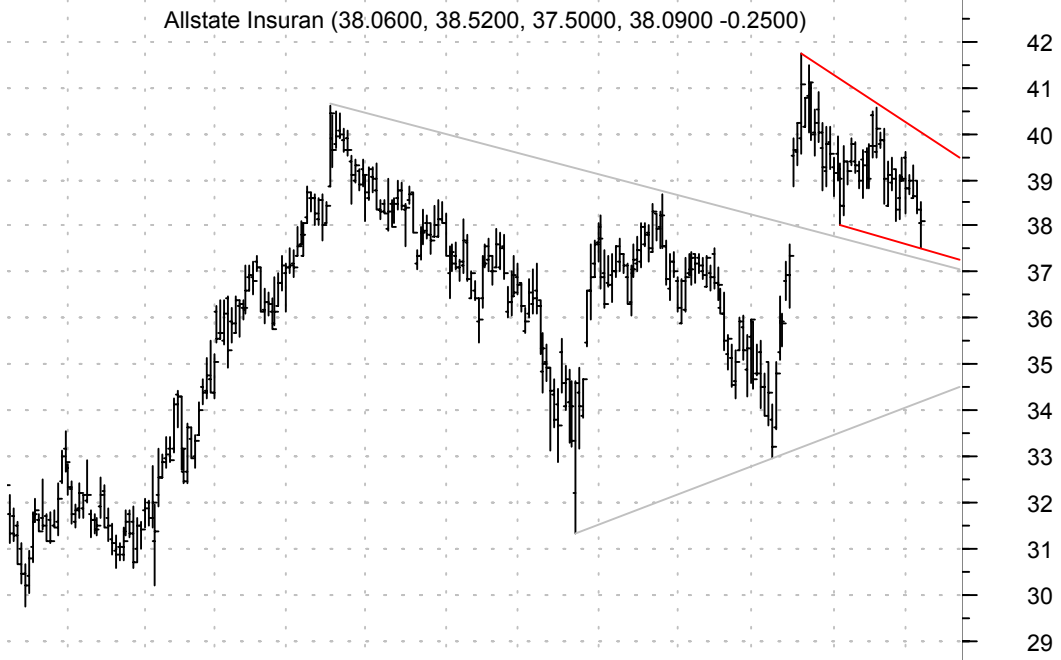
**AHG asc. tri. / buy on upside breakout on larger than normal volume**

Apria Healthcare (24.2000, 24.8500, 24.1000, 24.4800 +0.1200)



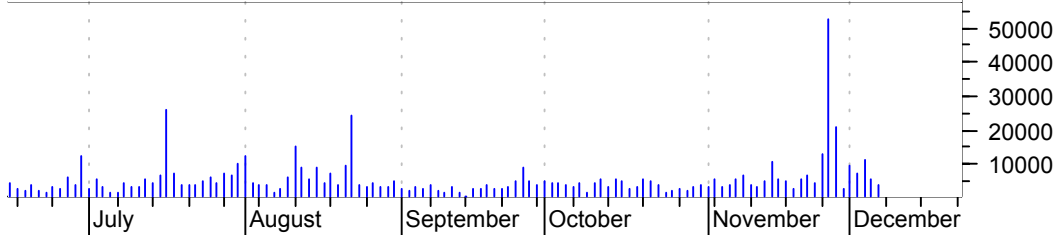
**ALL falling wedge preceded by 'pole-like' move / buy on upside breakout on larger than normal volume**

Allstate Insuran (38.0600, 38.5200, 37.5000, 38.0900 -0.2500)



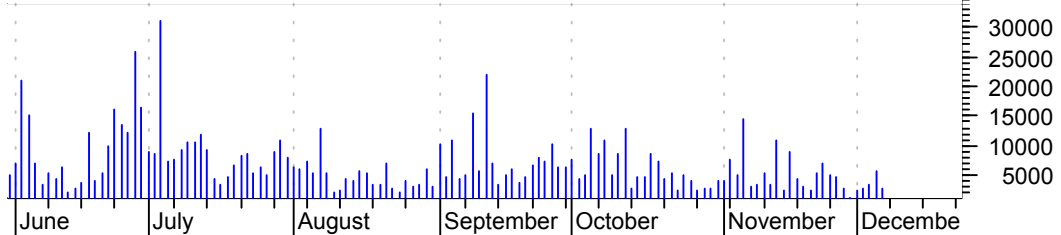
**ALOY rising wedge / sell on downside brkout on increased volume**

Alloy Inc:OTC (12.2800, 12.5500, 12.0000, 12.3500 +0.0300)



**AM symm. tri. / buy on upside brkout on increased volume**

Amer Greetings C (16.1100, 16.3500, 15.8800, 16.2300 +0.1300)



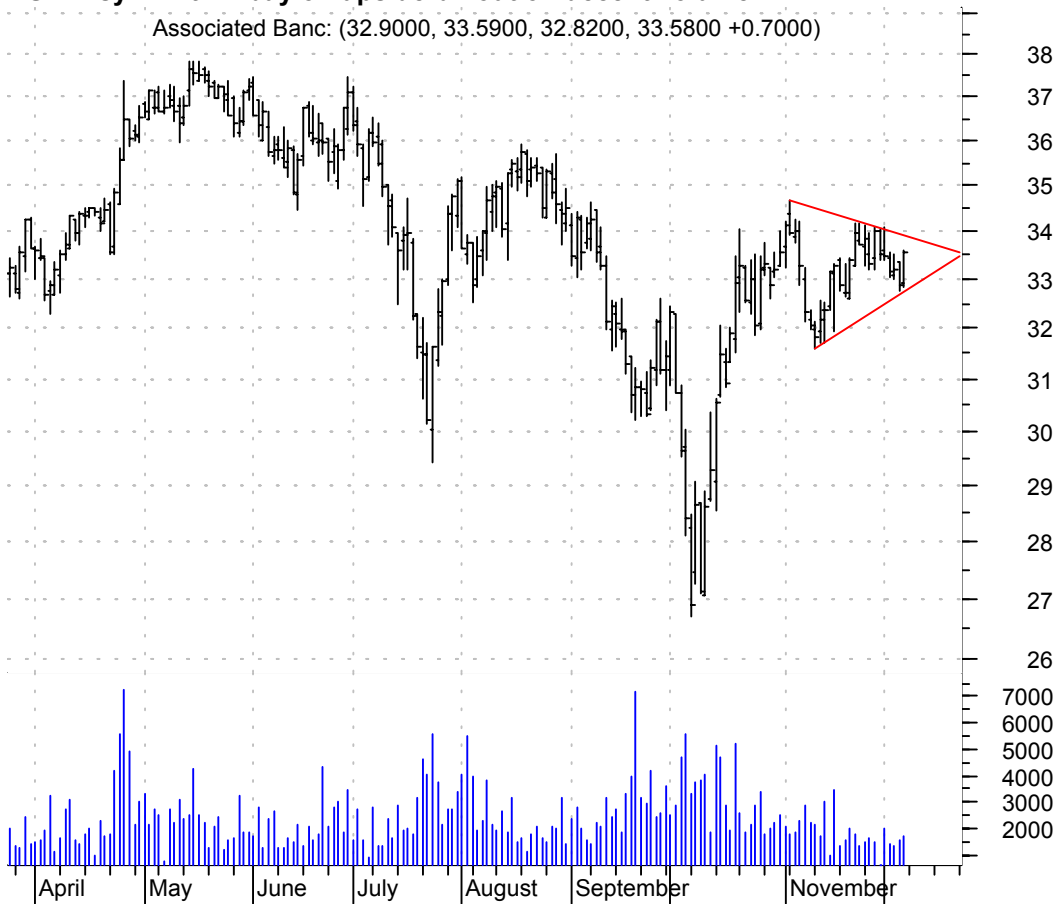
**AMCC symm. tri. / buy on upside breakout on increased volume**

Applied Micro Ci (4.1700, 4.5900, 4.1500, 4.5500 +0.2700)



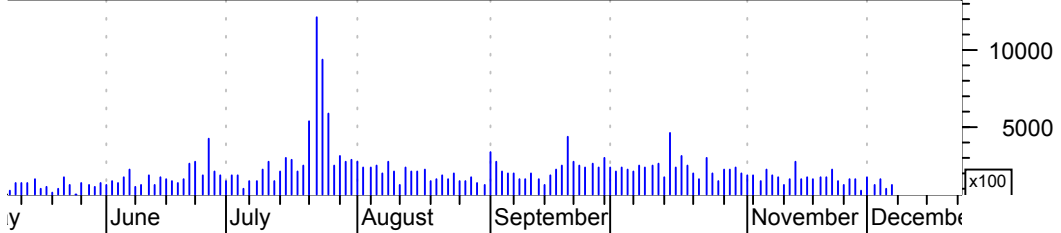
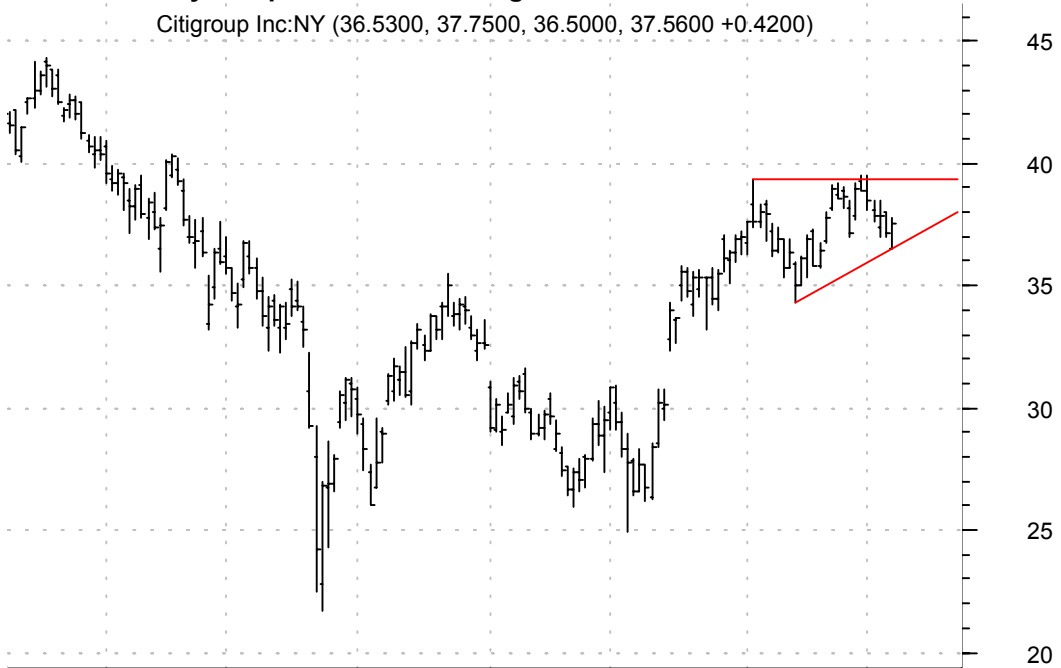
**ASBC symm. tri. / buy on upside breakout on decent volume**

Associated Banc: (32.9000, 33.5900, 32.8200, 33.5800 +0.7000)



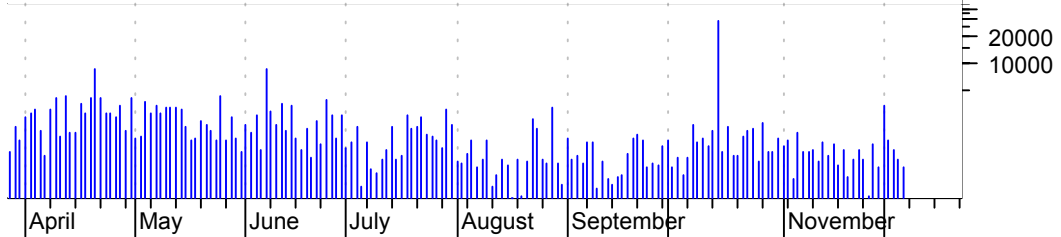
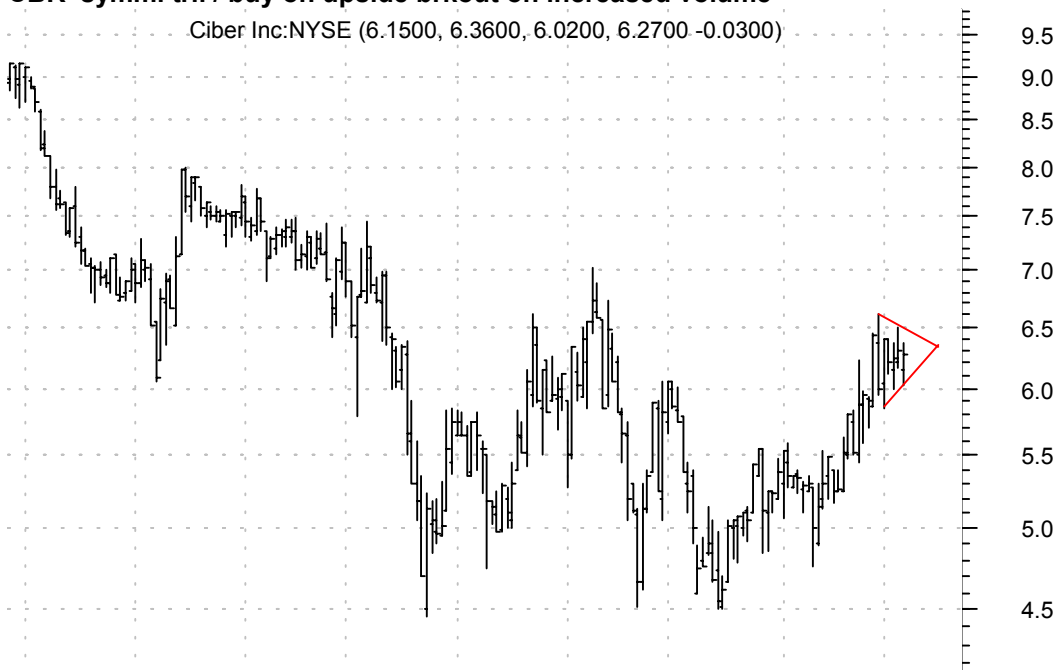
**C asc. tri. / buy on upside breakout on larger than normal volume**

Citigroup Inc:NY (36.5300, 37.7500, 36.5000, 37.5600 +0.4200)



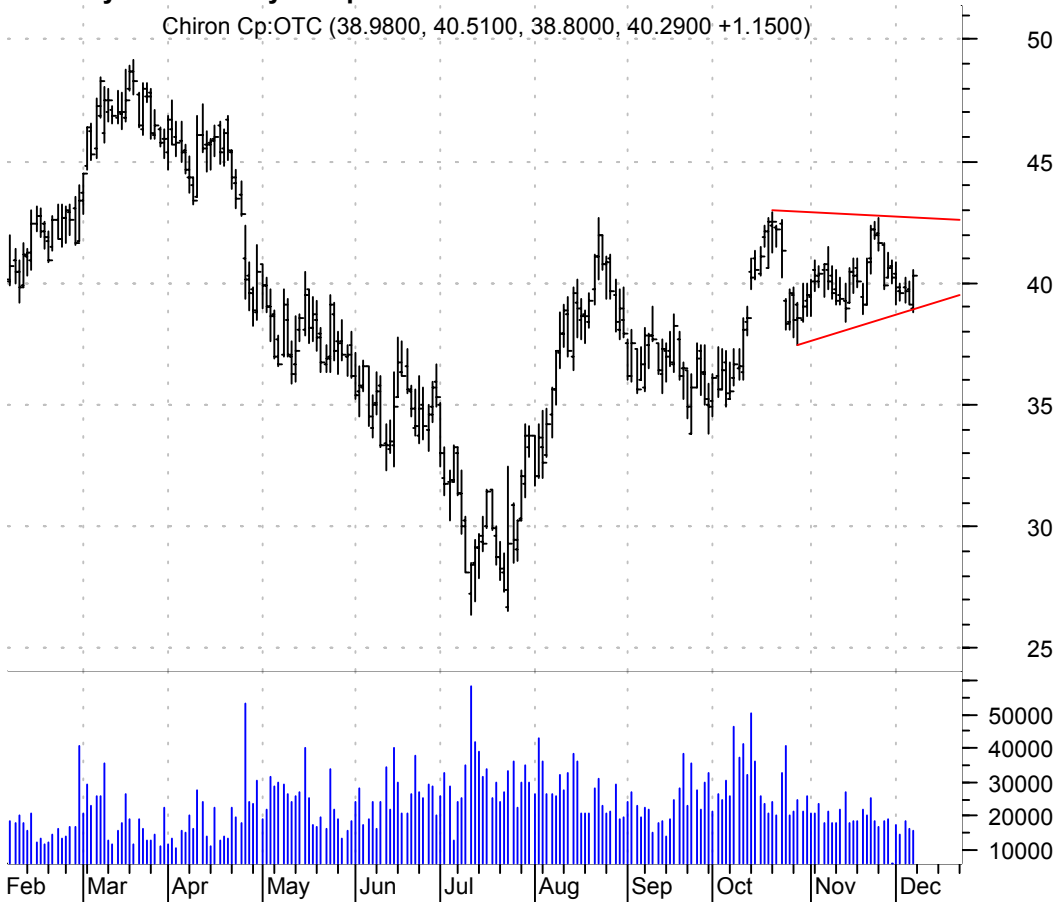
**CBR symm. tri. / buy on upside breakout on increased volume**

Ciber Inc:NYSE (6.1500, 6.3600, 6.0200, 6.2700 -0.0300)



**CHIR symm. tri. / buy on upside brkout on increased volume**

Chiron Cp:OTC (38.9800, 40.5100, 38.8000, 40.2900 +1.1500)



**CPS asc. tri. / buy on upside brkout on larger than normal volume**

Choicepoint Inc: (37.6000, 38.0500, 37.2000, 37.8300 -0.0100)



**CRAY symm. tri. / buy on upside brkout on increased volume**

Cray Inc:OTC (6.6500, 6.7500, 6.5200, 6.7000 -0.0200)



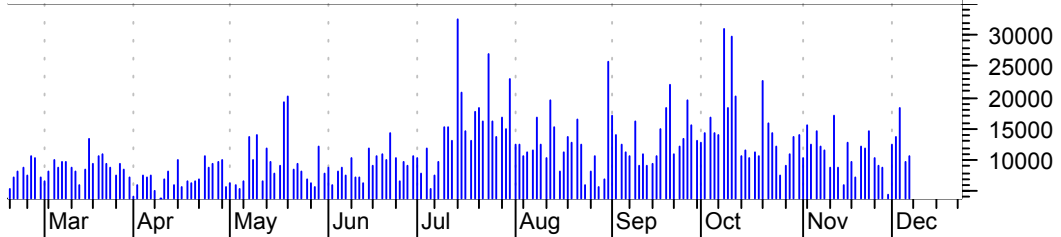
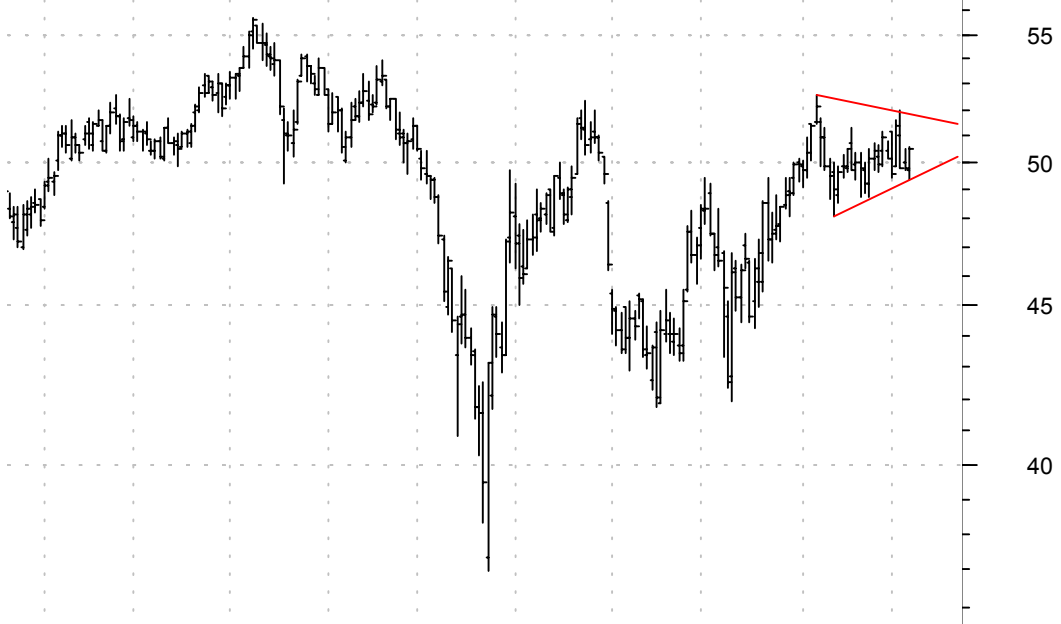
**DORL falling wedge type pattern w/ intra-pattern bull flag brkout / buy on upside brkout thru wedge on larger than normal volume**

Doral Financial (26.7400, 27.7600, 26.5000, 27.5300 +0.8000)



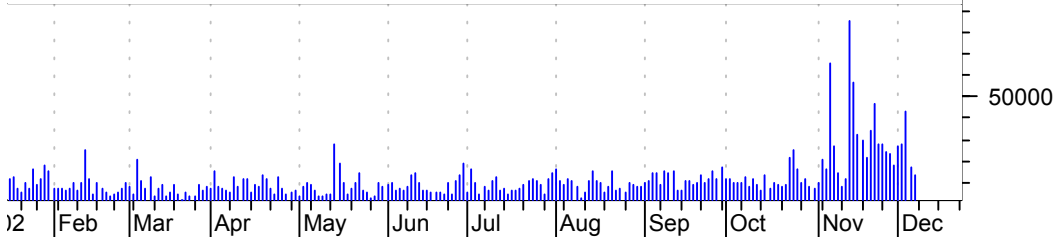
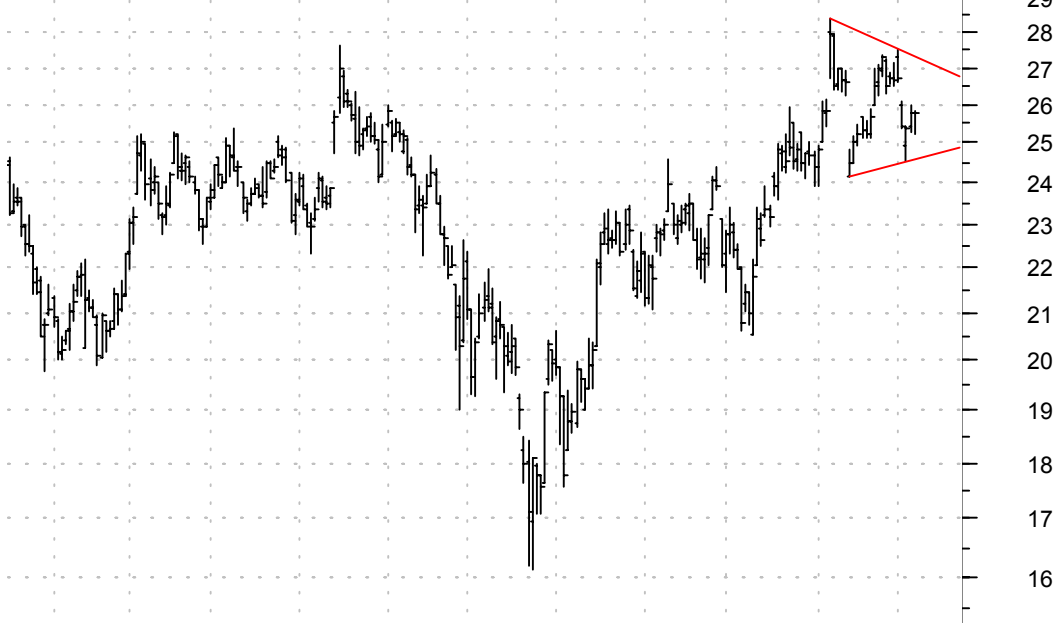
**EXC symm. tri. / buy on upside brkout on increased volume**

Exelon Corp:NYSE (49.7700, 50.6300, 49.4000, 50.5400 +0.7400)



**FOX symm. tri. / buy on upside brkout on larger than normal volume**

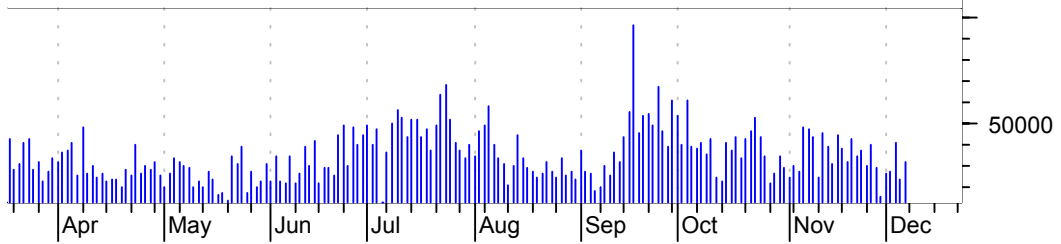
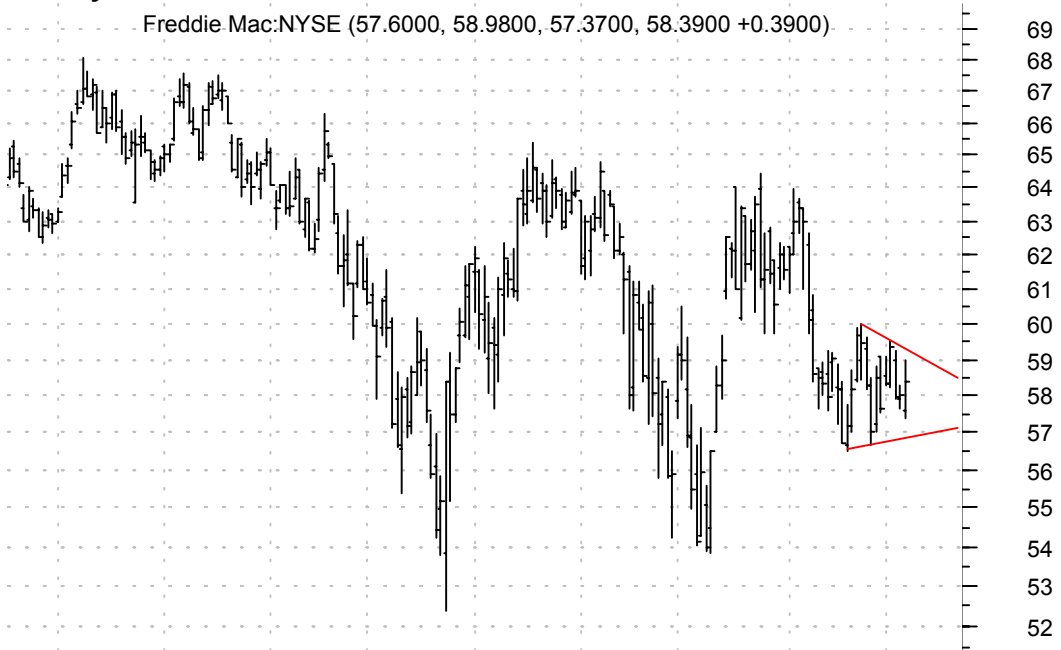
Fox Entertainmen (25.8000, 25.8500, 25.2400, 25.8000 +0.000)





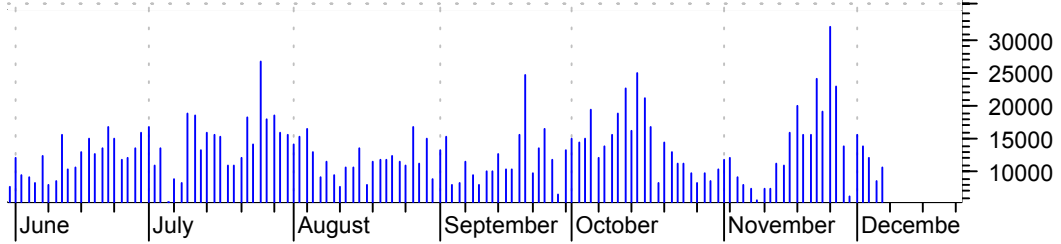
**FRE symm. tri. / sell on downside brkout on increased volume**

Freddie Mac:NYSE (57.6000, 58.9800, 57.3700, 58.3900 +0.3900)



**GCI rising wedge / sell on downside brkout on increased volume**

Gannett Co Inc:N (70.9000, 72.3500, 70.4000, 71.3900 +0.4300)



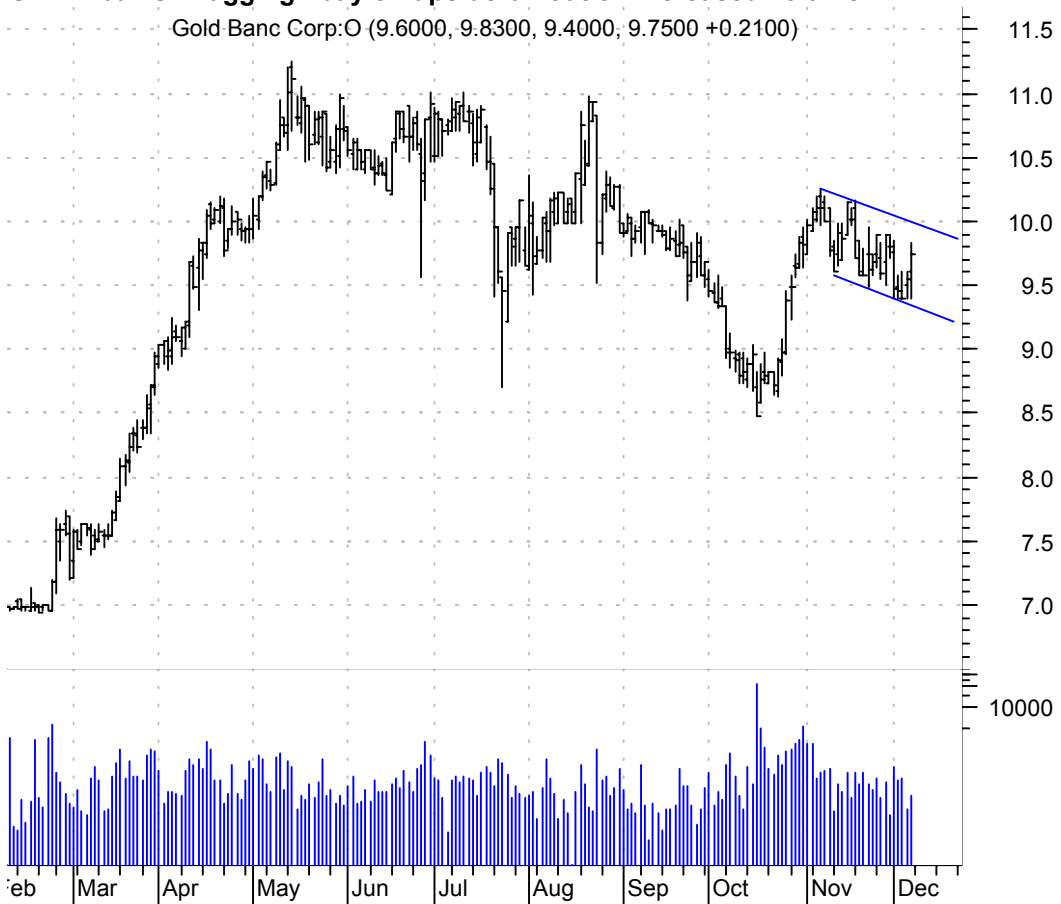
**GGUY sloppy asc. tri. / buy on upside brkout on decent volume**

Good Guys Inc:OT (2.5500, 2.9000, 2.5200, 2.8800 +0.1500)



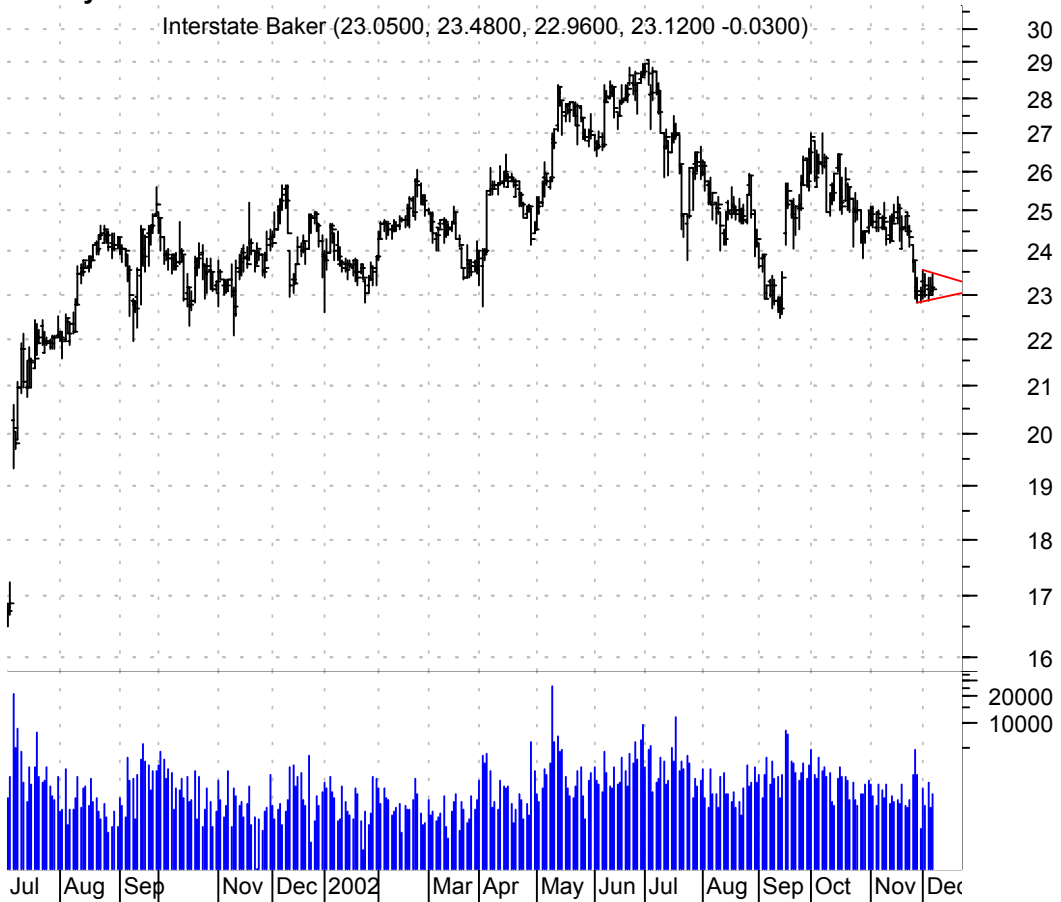
**GLDB bullish flagging / buy on upside brkout on increased volume**

Gold Banc Corp:O (9.6000, 9.8300, 9.4000, 9.7500 +0.2100)



**IBC symm. tri. / sell on downside brkout on increased volume**

Interstate Baker (23.0500, 23.4800, 22.9600, 23.1200 -0.0300)



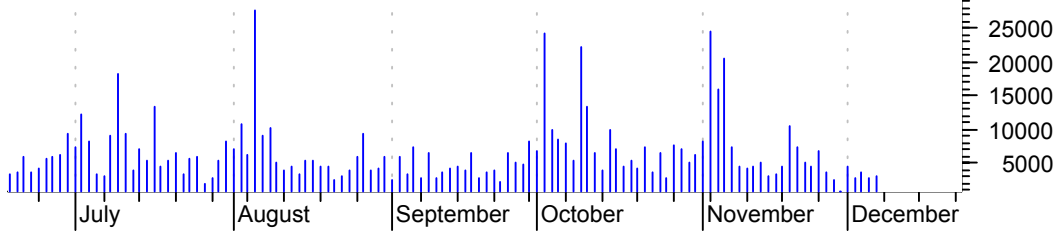
**MET symm. tri. / buy on upside brkout on larger than normal volume**

METLIFE INC:NYSE (26.2000, 27.0200, 26.0000, 26.6400 +0.4400)



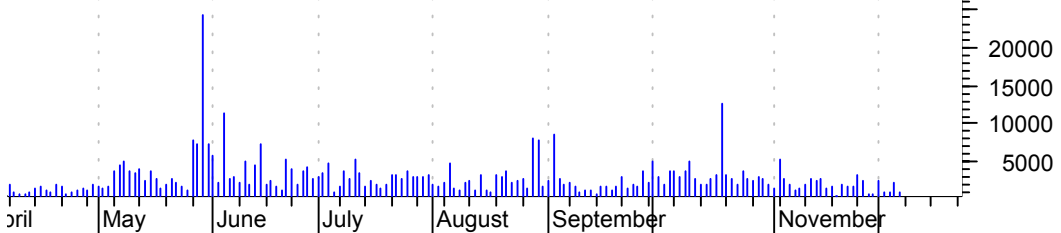
**MOVI symm. tri. / buy on upside brkout on increased volume**

Movie Gallery:OT (17.6500, 18.0800, 17.2000, 17.9100 +0.4000)

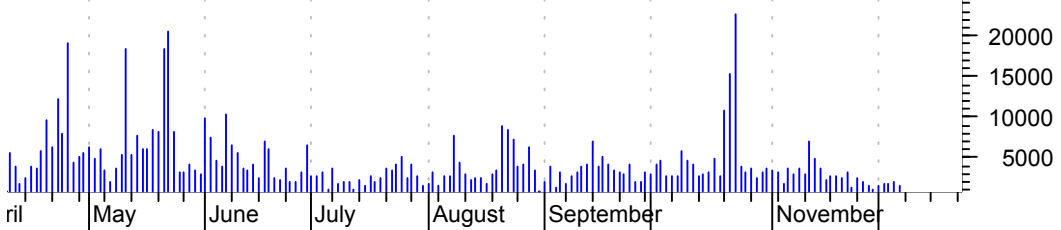
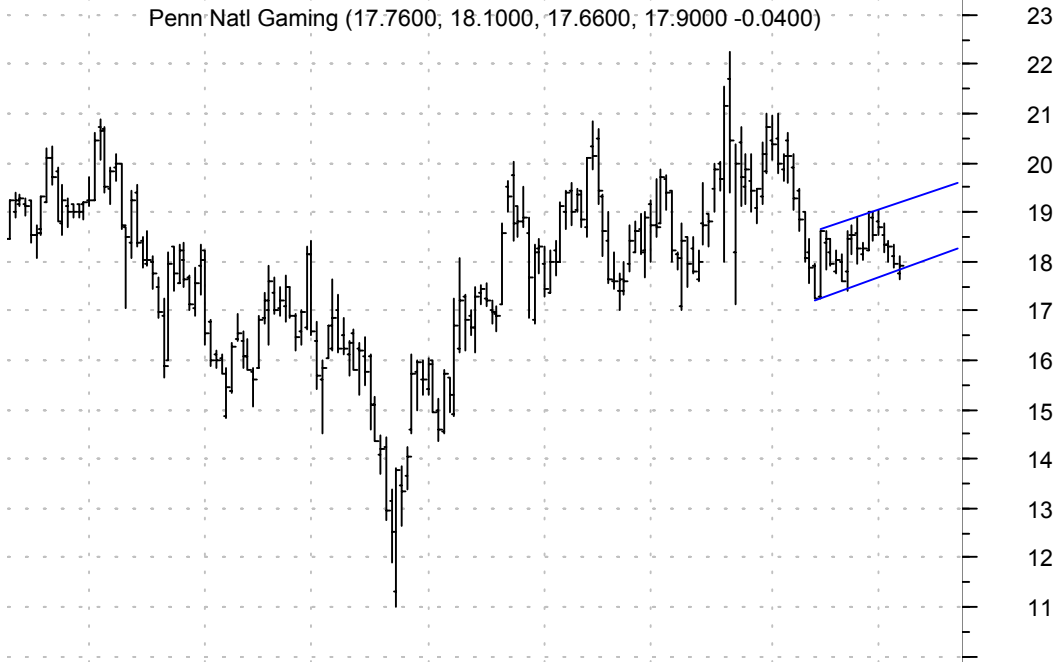


**MRX asc. tri. brkout / buy and use a \$1 move back into the pattern as a failure**

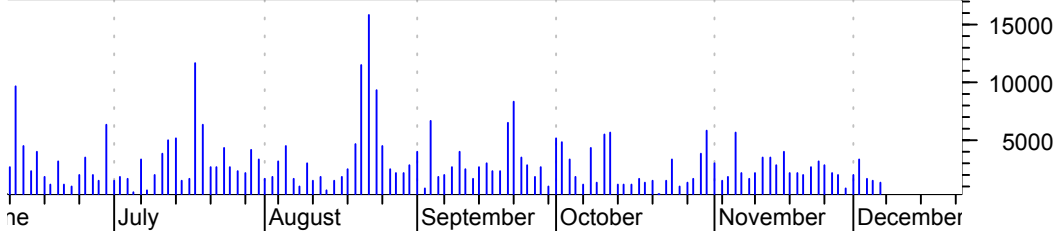
Medicis Pharmace (46.1000, 46.6500, 45.9400, 46.6200 +0.4900)



**PENN bearish flagging / sell on downside brkout on increased volume**

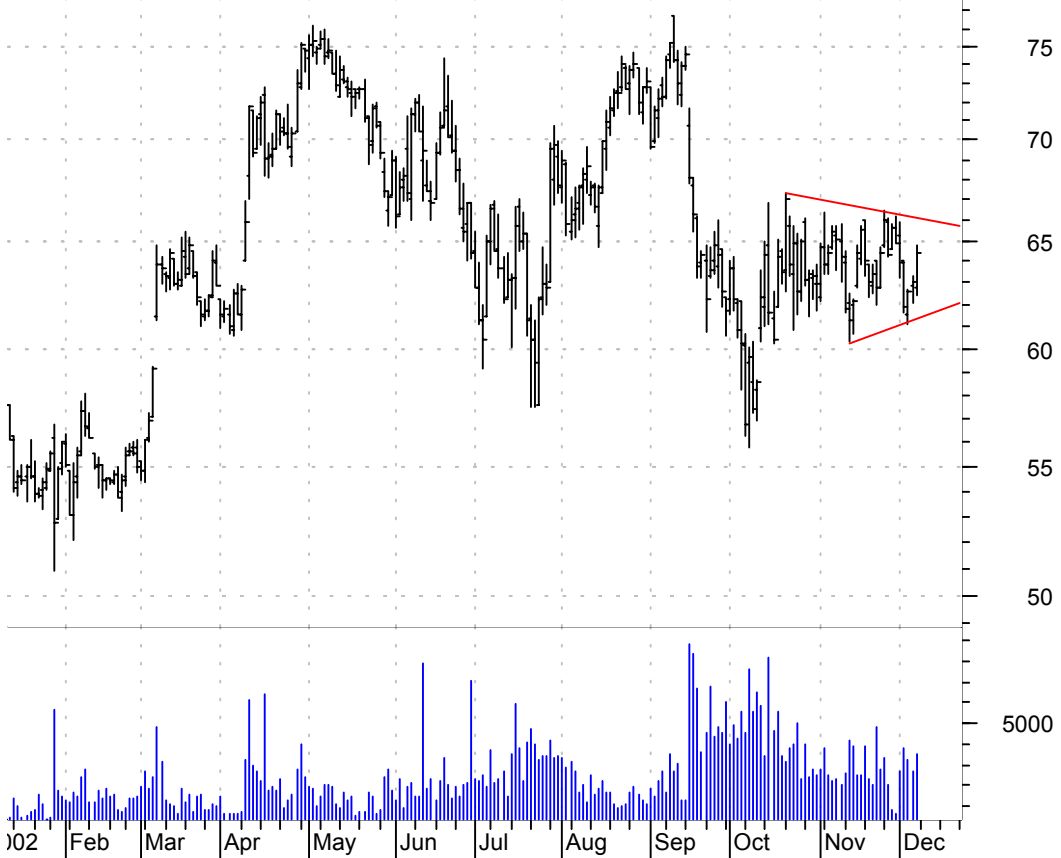


**PETC symm. tri. / buy on upside brkout on increased volume**



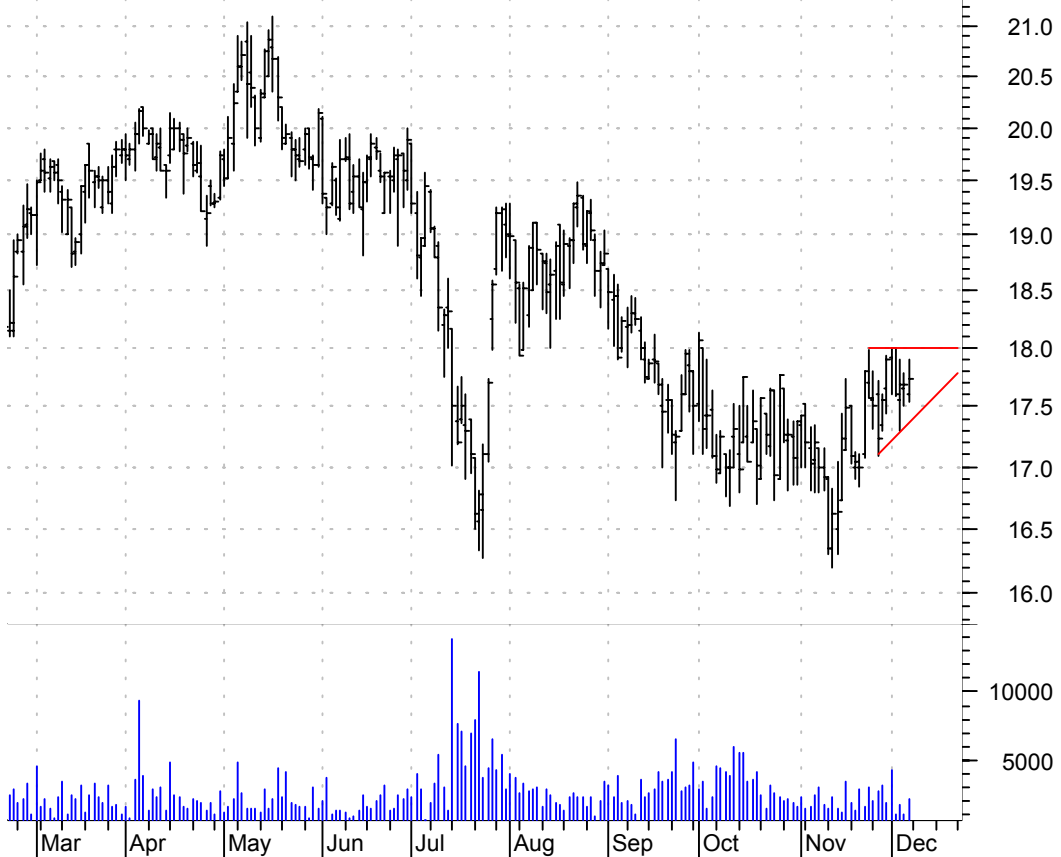
**Pll asc. tri. / buy on upside brkout on decent volume**

Polaris Indus Lp (62.8000, 64.7800, 62.4000, 64.3800 +1.3800)



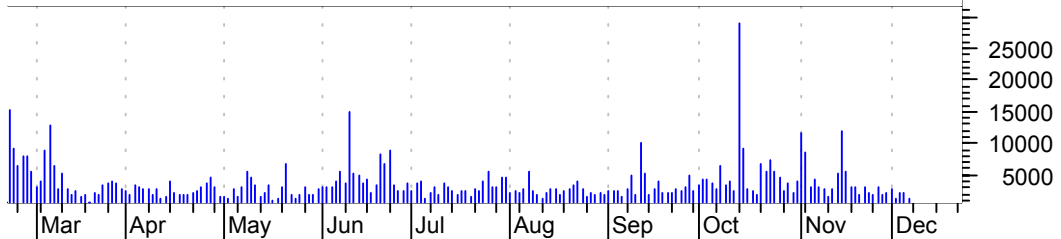
**PKG asc. tri. / buy on upside brkout on increased volume**

PACKAGING CP OF (17.6000, 17.9000, 17.5400, 17.7400 +0.0600)



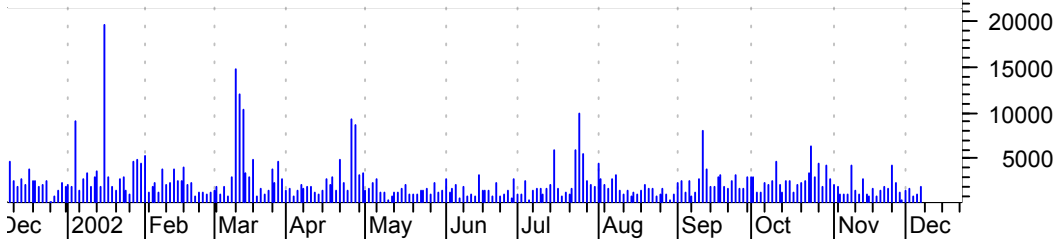
**PRX rectangle / buy on upside brkout on increased volume**

Pharmaceutical R (26.8000, 27.4300, 26.8000, 27.4300 +0.5700)



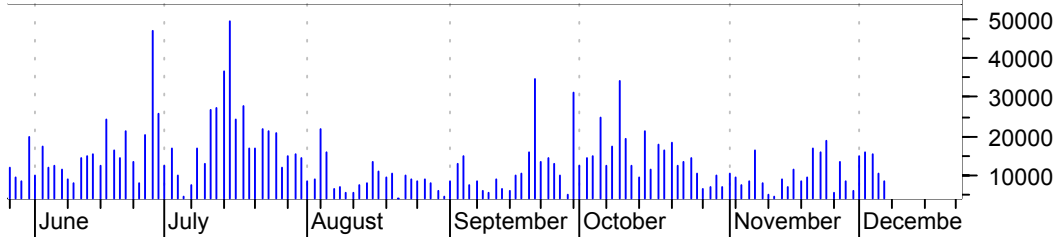
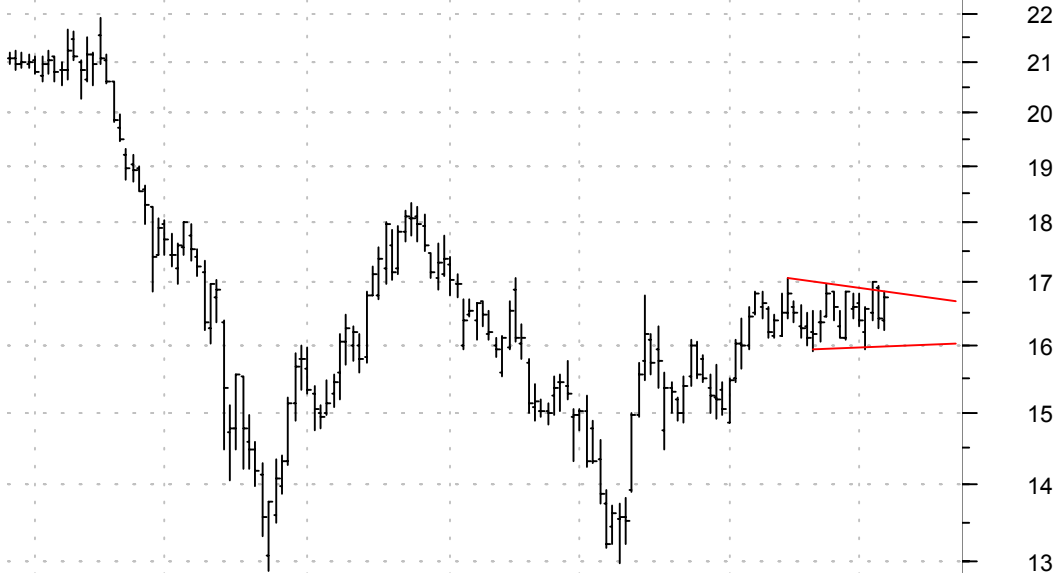
**RARE symm. tri. / buy on upside brkout on increased volume**

Rare Hospitality (26.6300, 27.1900, 26.4400, 27.1400 +0.4400)



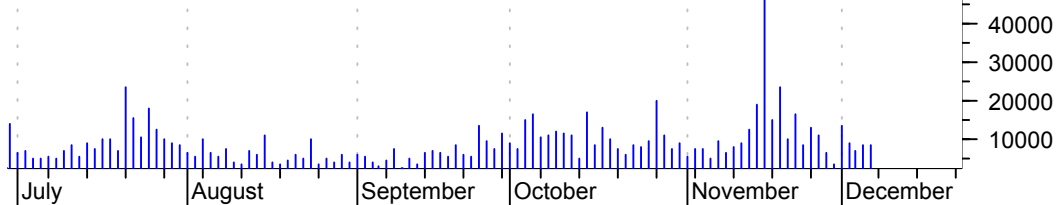
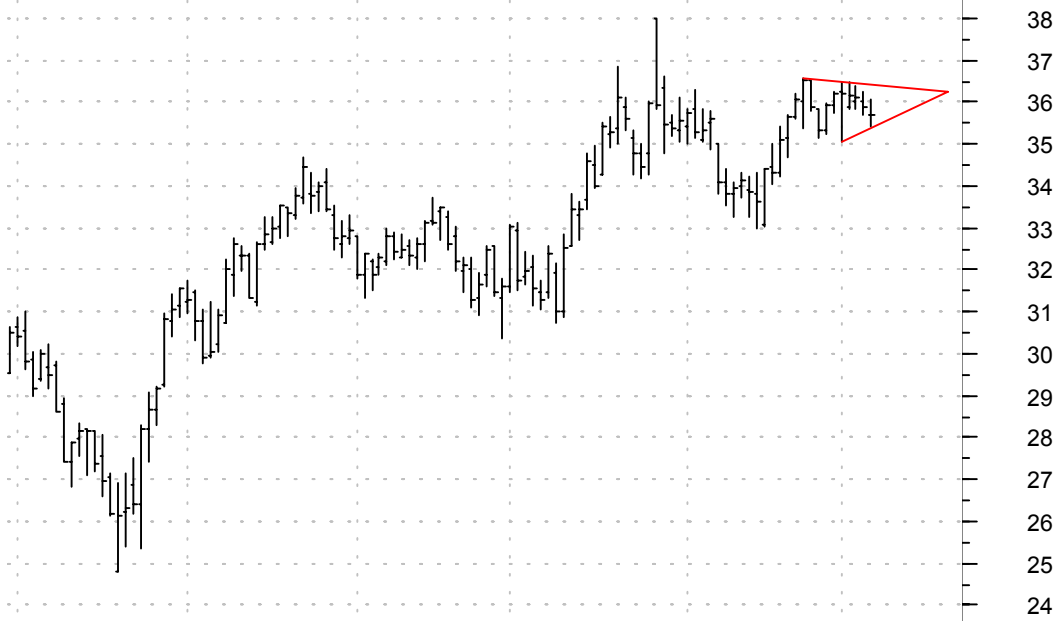
**RX symm. tri. / buy on upside brkout on increased volume**

IMS Health Inc:N (16.3900, 16.8600, 16.2300, 16.7600 +0.3400)



**SAFC symm. tri. / buy on upside brkout on increased volume**

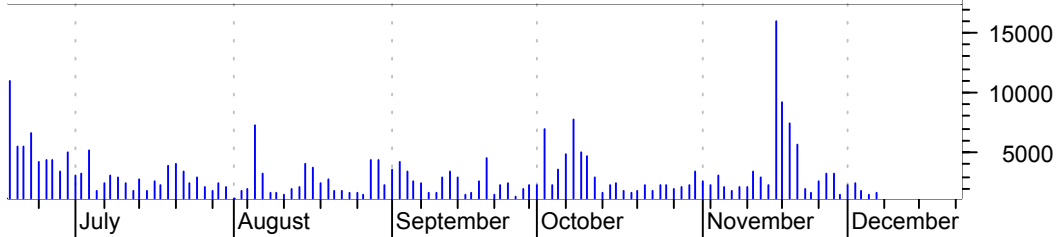
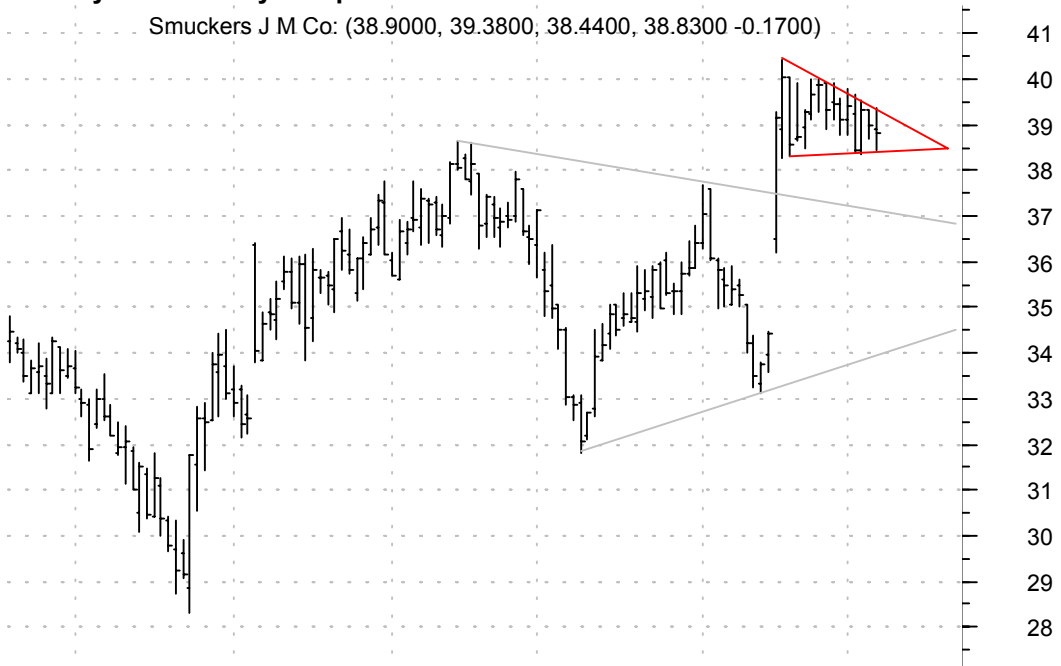
Safeco:OTC (35.6900, 36.0900, 35.4100, 35.6900 -0.1800)





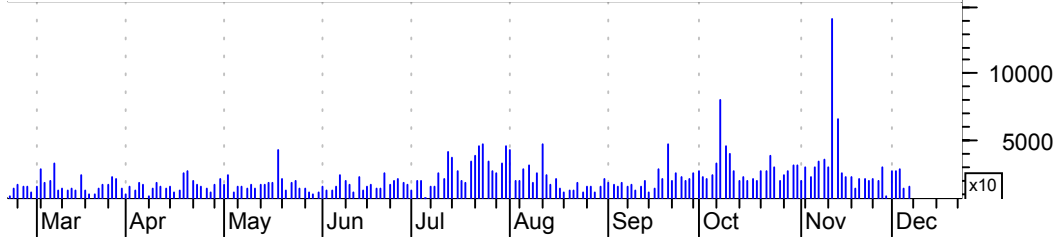
**SJM symm. tri. / buy on upside breakout on increased volume**

Smuckers J M Co: (38.9000, 39.3800, 38.4400, 38.8300 -0.1700)

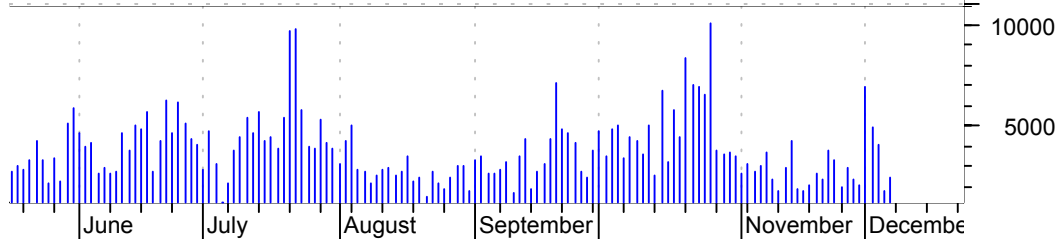
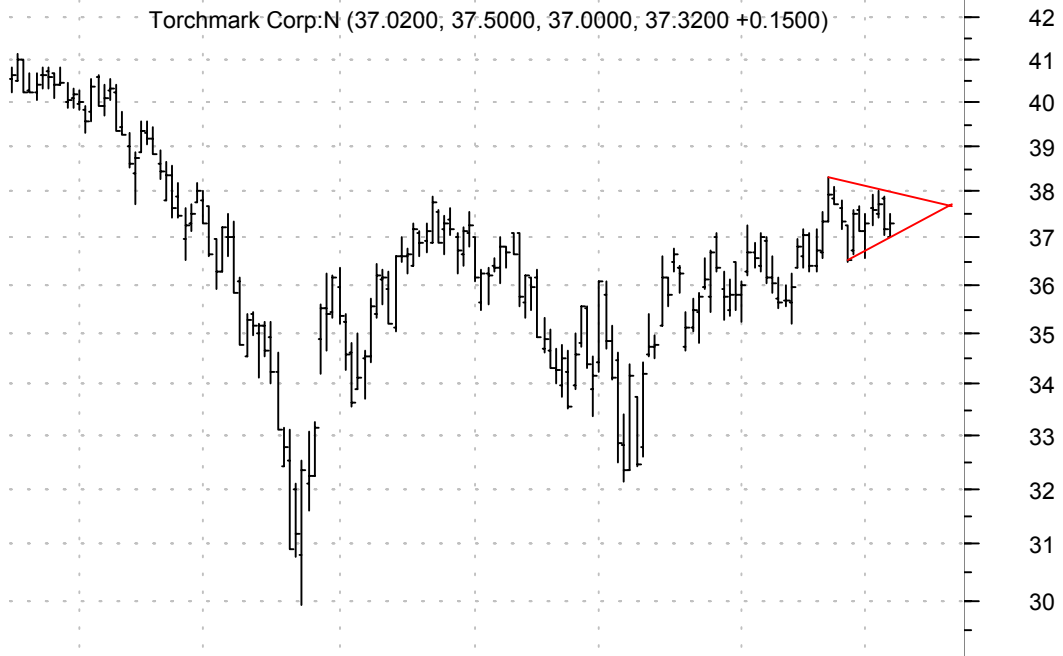


**SO symm. tri. / sell on downside breakout on increased volume**

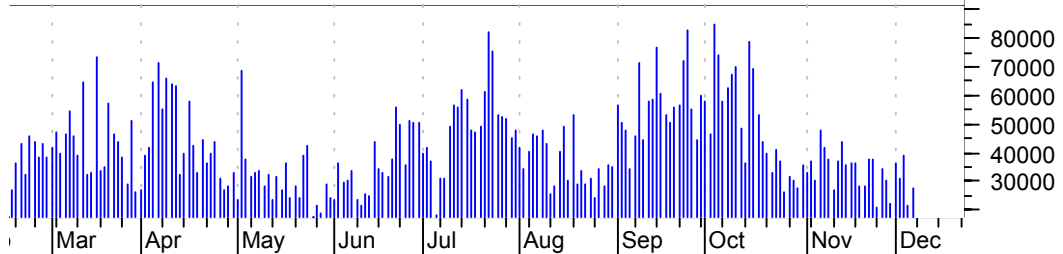
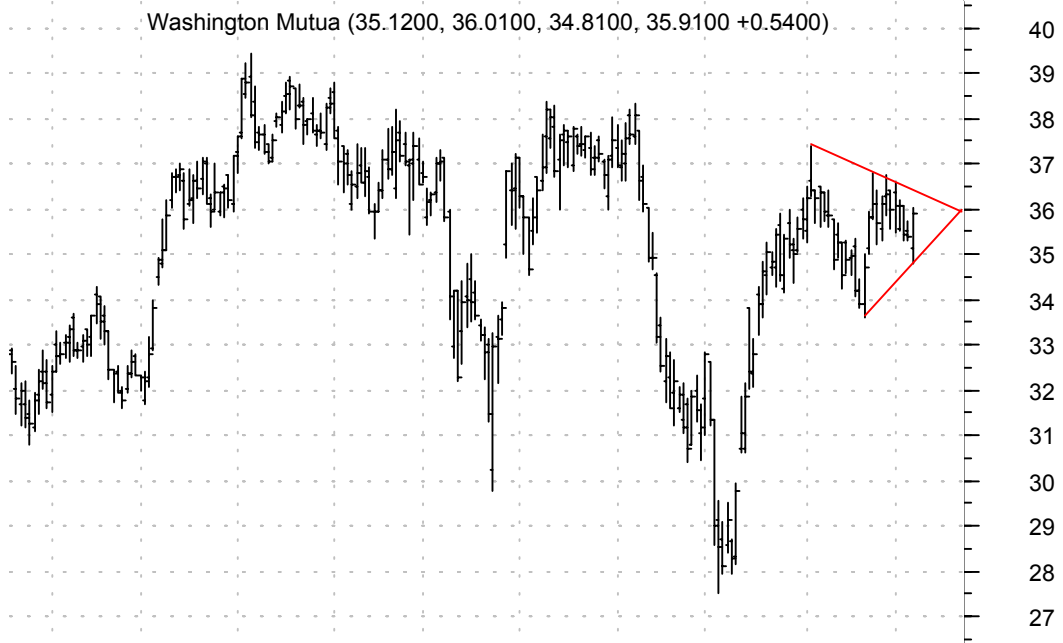
Southern Co:NYSE (26.3000, 26.6400, 26.0100, 26.5200 +0.1600)



**TMK symm. tri. / buy on upside breakout on increased volume**

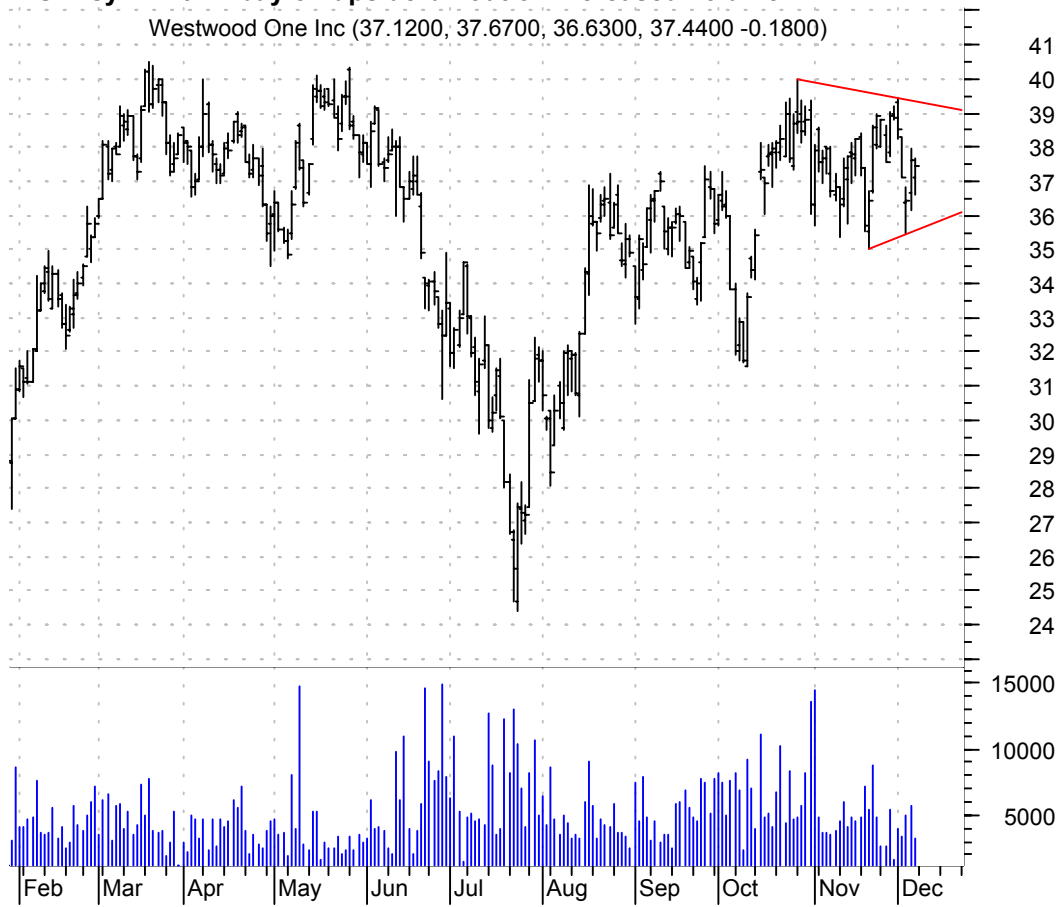


**WM symm. tri. / buy on upside breakout on increased volume**



**WON symm. tri. / buy on upside brkout on increased volume**

Westwood One Inc (37.1200, 37.6700, 36.6300, 37.4400 -0.1800)



**chartpatterns.com**

Chart Pattern Analysis for Timing the Markets

[KMatras@aol.com](mailto:KMatras@aol.com)