

ACV asc. triangle / buy on upside breakout on increased volume

Alberto-Culver C (47.4500, 47.9900, 47.0500, 47.2000 -0.5000)



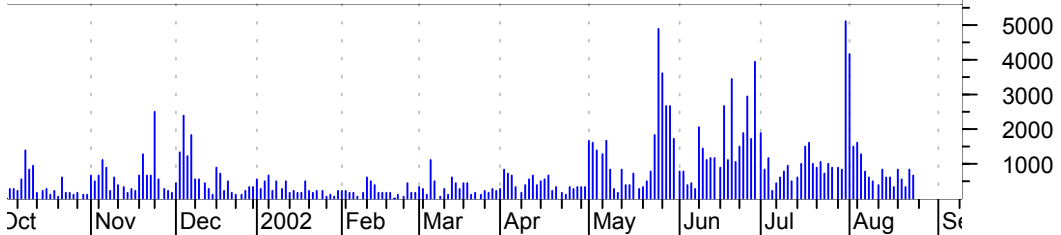
AEE rising wedge / sell on downside breakout on increased volume

Ameren Corp:NYSE (44.7300, 44.7300, 44.0000, 44.0100 -0.7200)



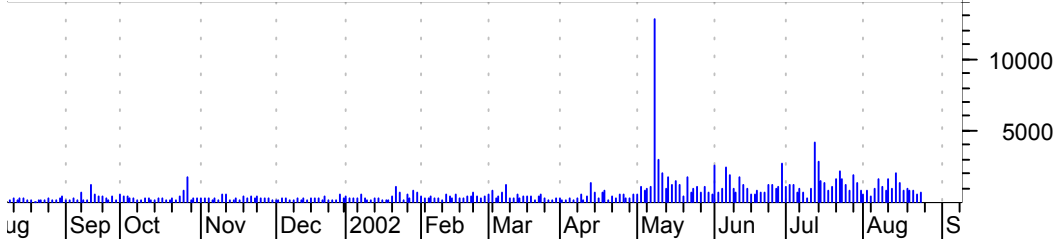
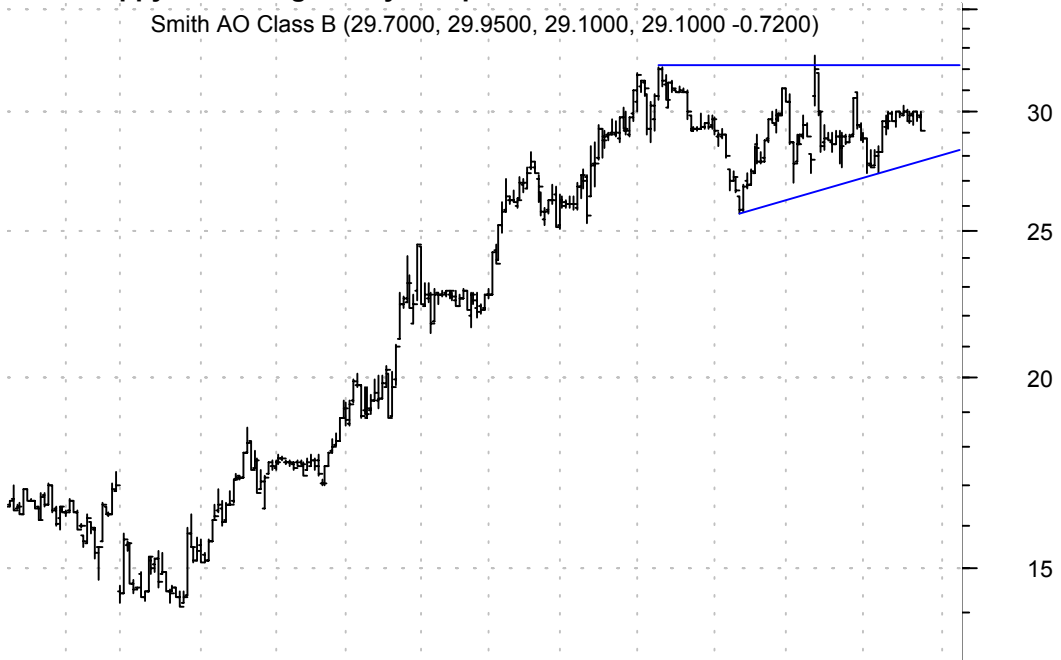
AMI sloppy asc. triangle / buy on upside breakout on increased volume

Alaris Medical I (6.5400, 6.7000, 6.4600, 6.7000 +0.1100)



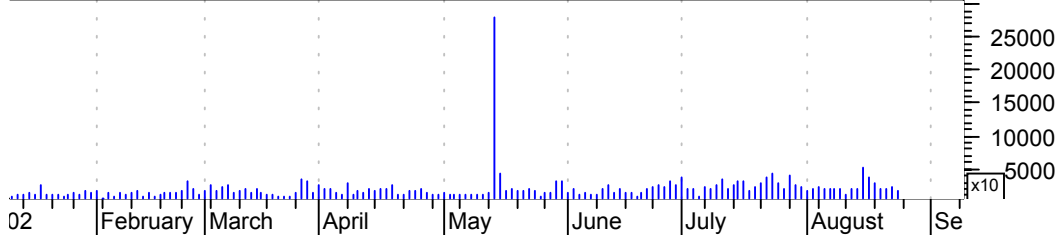
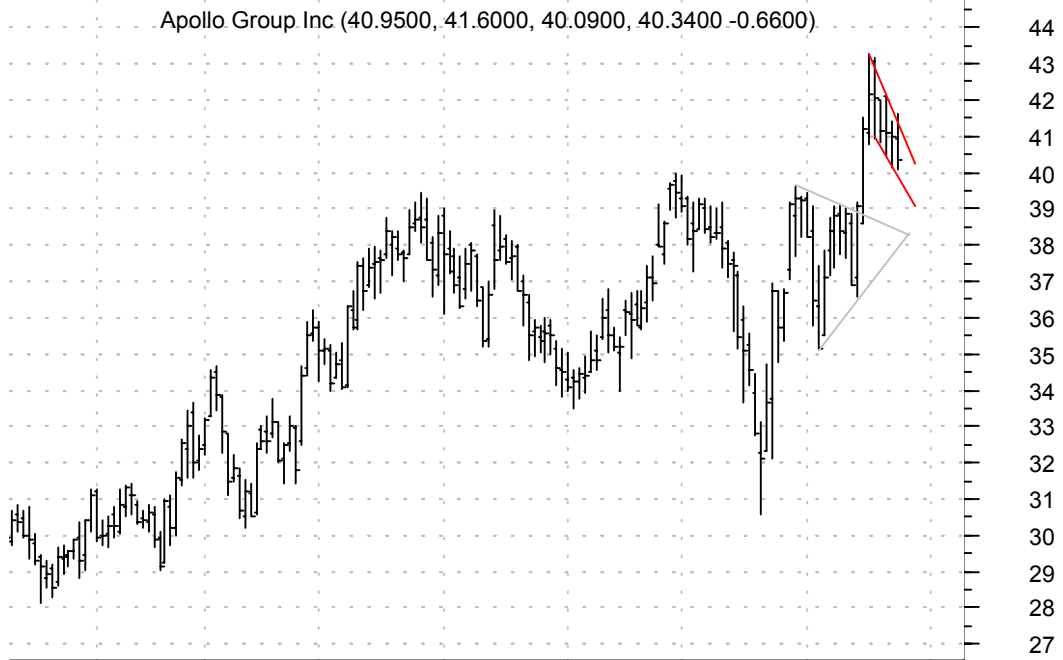
AOS sloppy asc. triangle / buy on upside breakout on increased volume

Smith AO Class B (29.7000, 29.9500, 29.1000, 29.1000 -0.7200)



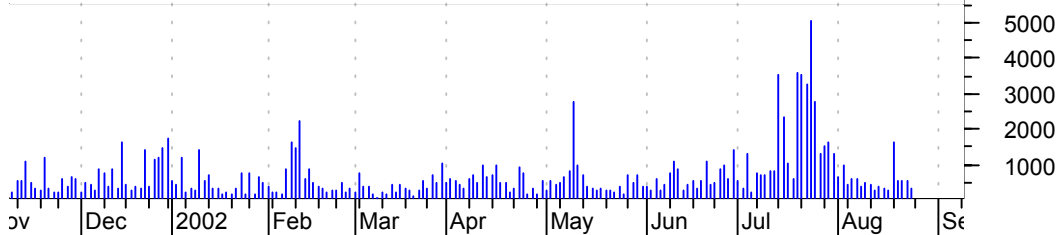
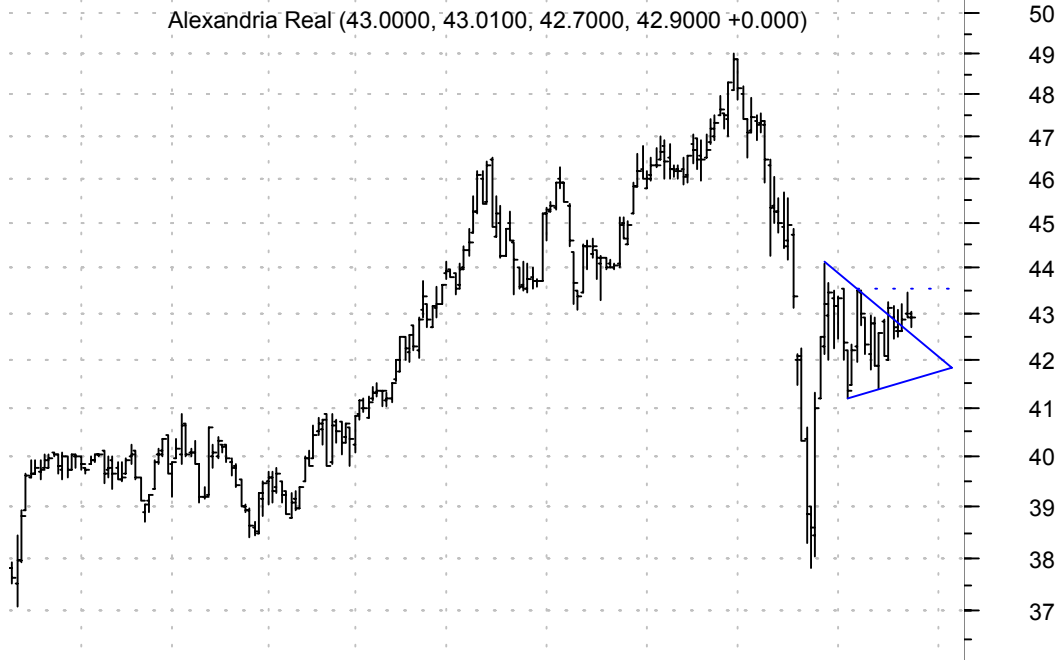
APOL falling wedge preceded by 'pole' / buy on upside breakout on increased volume

Apollo Group Inc (40.9500, 41.6000, 40.0900, 40.3400 -0.6600)

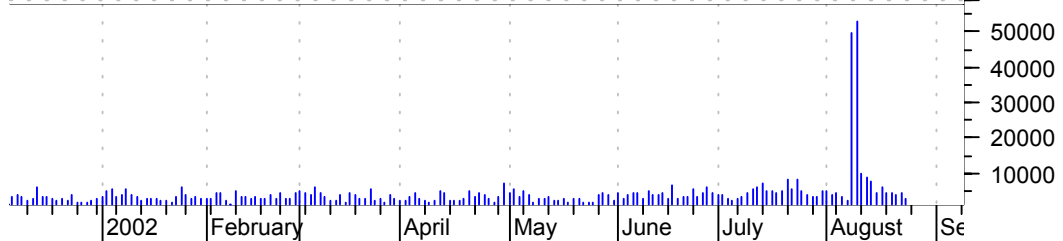


ARE bull pennant brkout / buy on upside breakout thru dotted blue line on increased volume

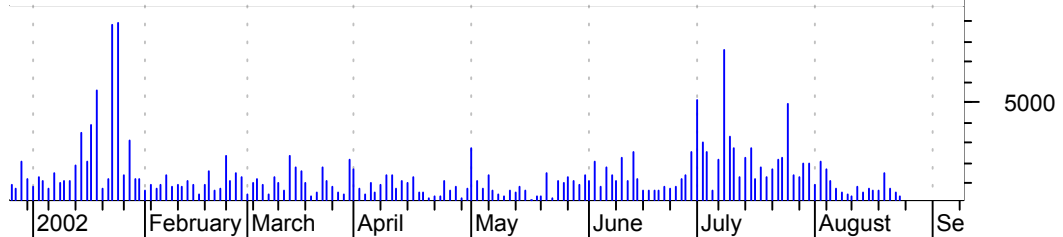
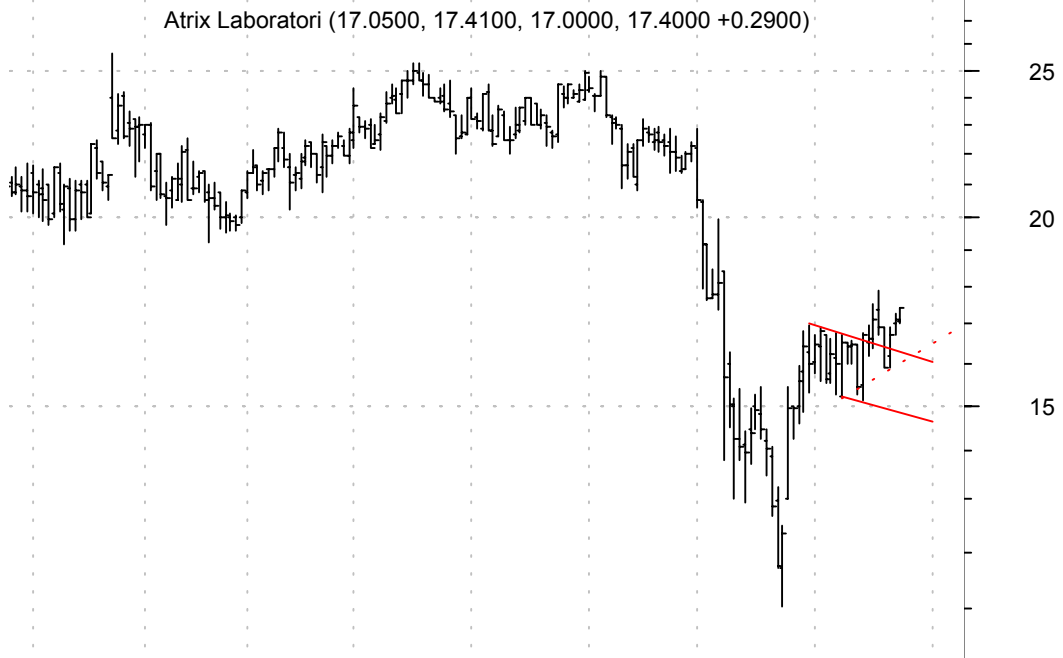
Alexandria Real (43.0000, 43.0100, 42.7000, 42.9000 +0.000)



ASH bear pennant / sell on downside breakout on larger volume (be alert to a brkout and reversal)

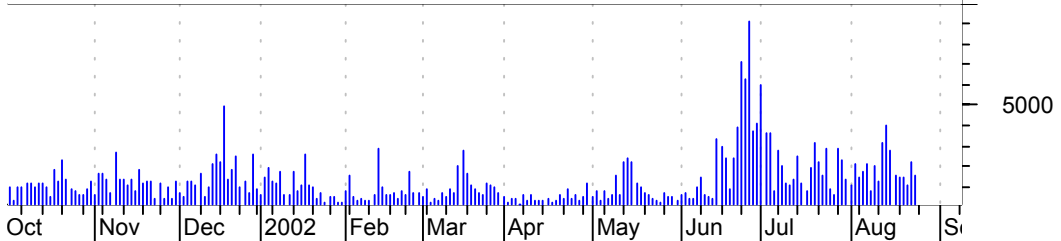


ATRX bull flag brkout / buy and use asc. dotted red line as failure point



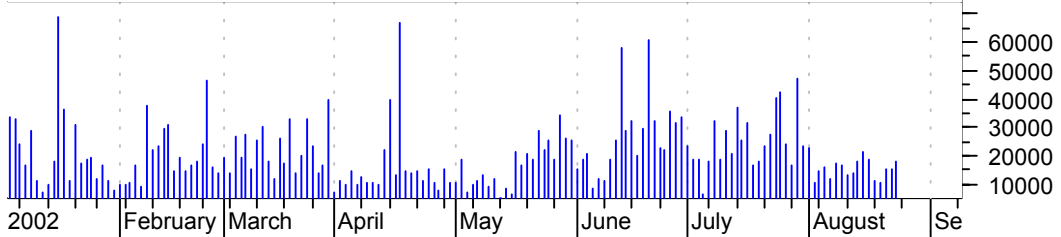
AVL big flagging pattern / buy on upside breakout on good volume

Aviall Inc:NYSE (12.5000, 12.6400, 12.0100, 12.0100 -0.4900)



BSX symm. triangle / buy and use bottom part of triangle (asc. trendline) as failure point

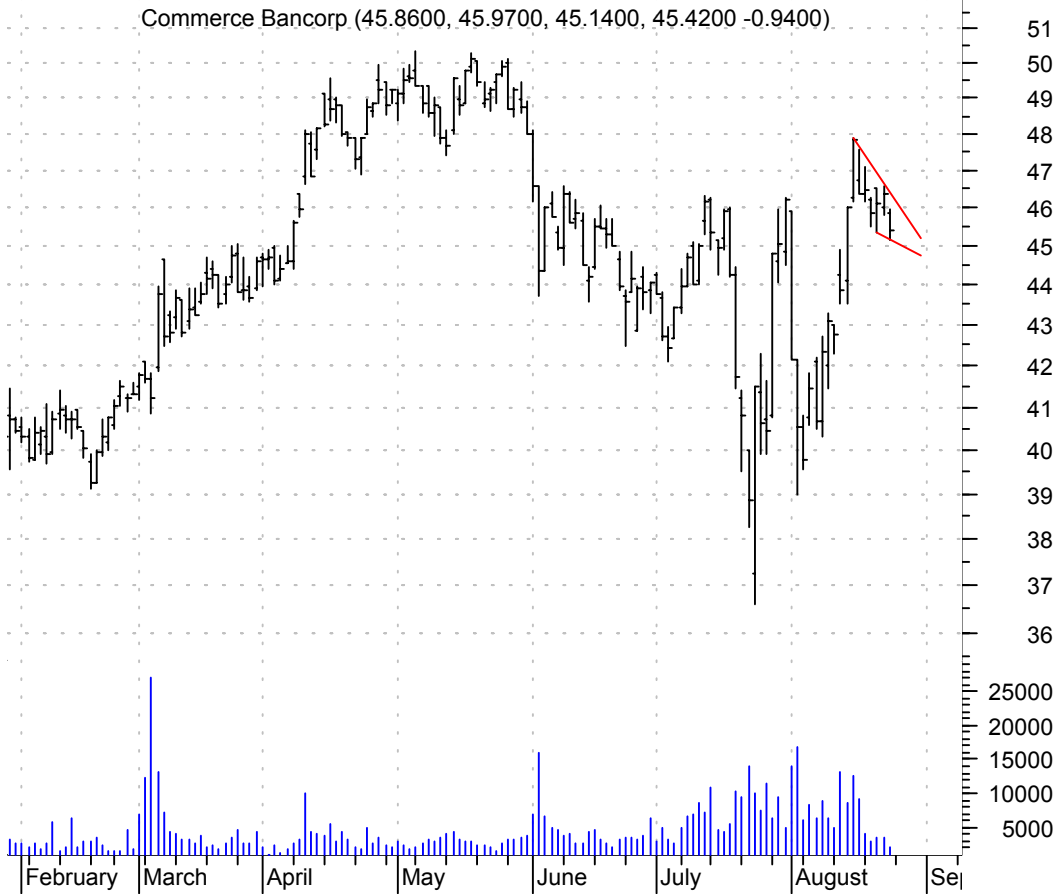
Boston Scientifi (28.7500, 29.6200, 28.6700, 29.3200 +0.5700)



CAI big imperfect bullish flagging pattern / buy on upside breakout thru dotted red line on increased volume

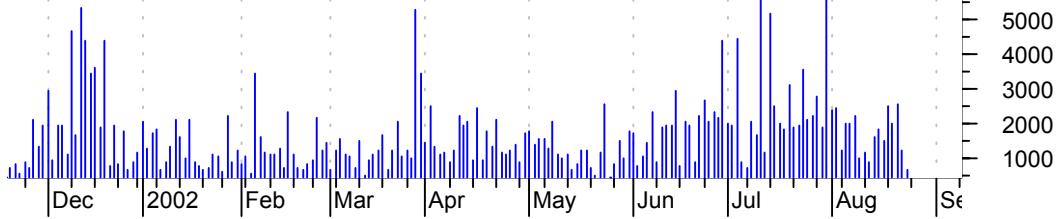
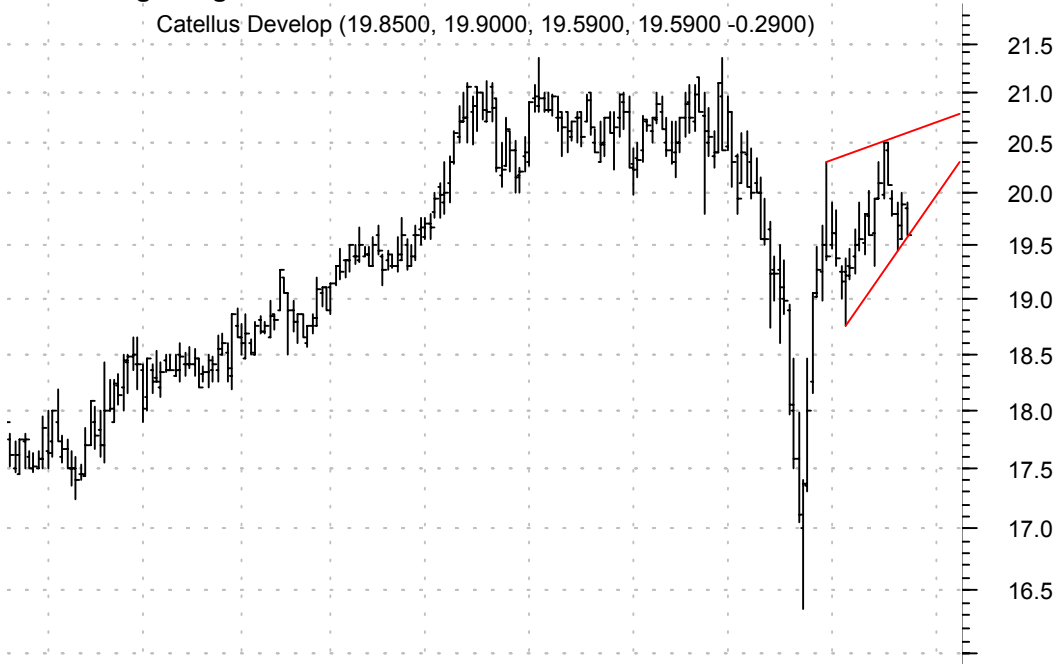


CBH falling wedge preceded by 'pole' / buy on upside breakout on increased volume



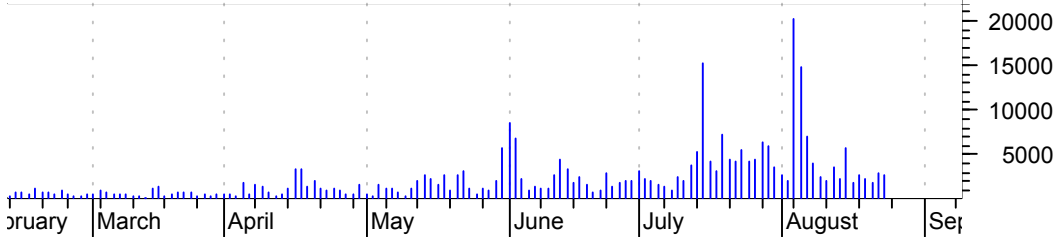
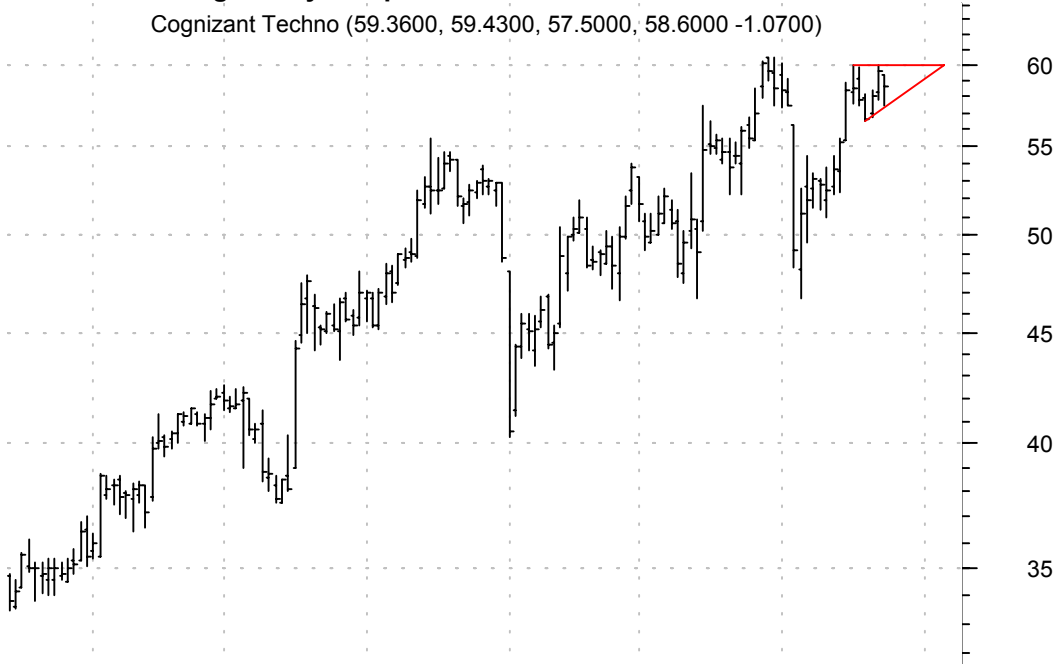
CDX rising wedge / sell on downside breakout on increased volume

Catellus Develop (19.8500, 19.9000, 19.5900, 19.5900 -0.2900)

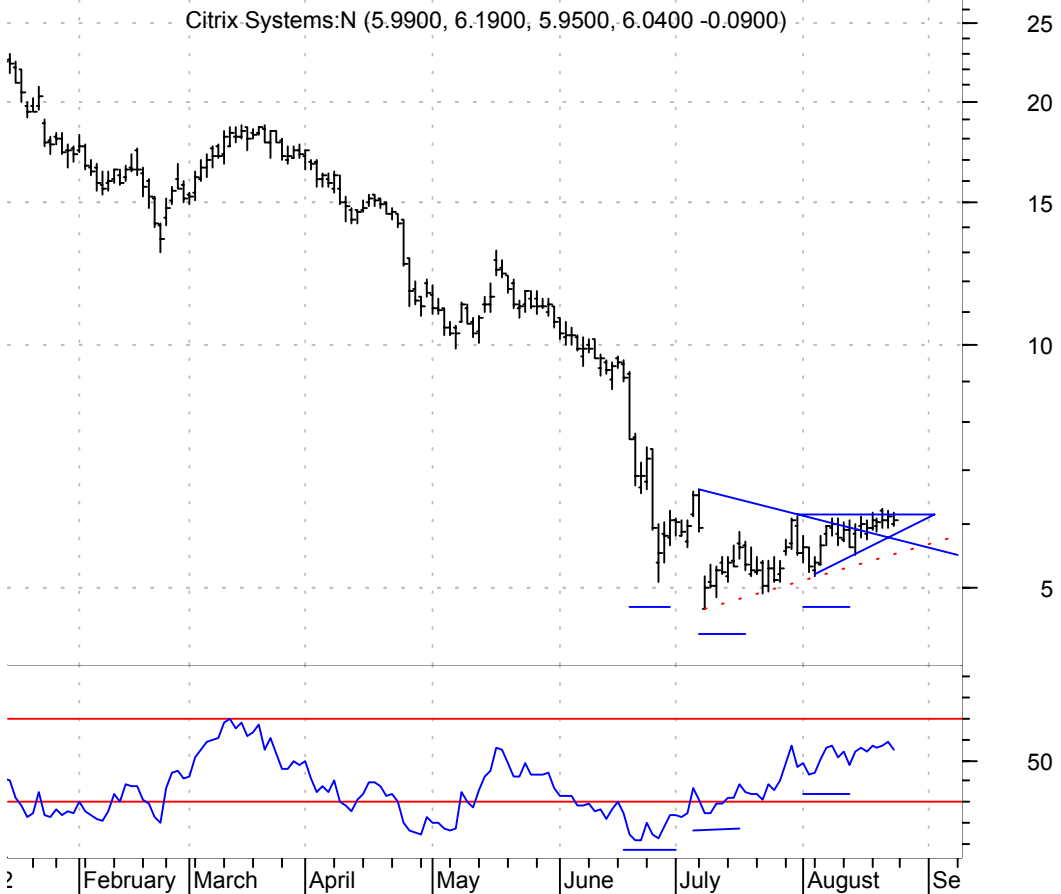


CTSH asc. triangle / buy on upside breakout on increased volume

Cognizant Techno (59.3600, 59.4300, 57.5000, 58.6000 -1.0700)



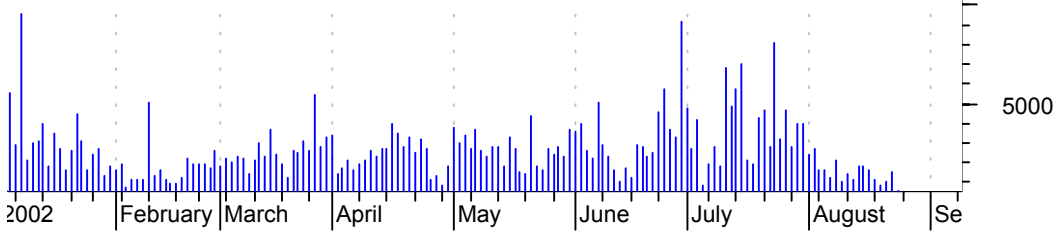
CTXS sloppy inv. h. & sh. and asc. tri. / buy and use asc. dotted red line as failure point



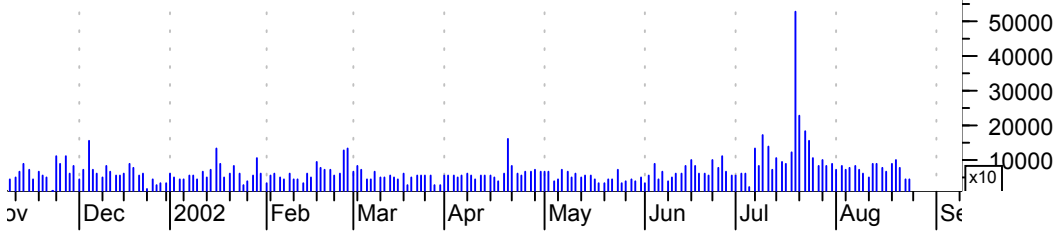
CZ rising wedge / sell on downside breakout on increased volume



DDR sml symm. tri. after lrger bull pnnt. brkout / buy on upside brkout, and use the low point of the sml symm. tri. as the failure point



EBAY small bullish flag / buy on upside breakout on increased volume



ENR symm. triangle / buy on upside breakout on increased volume

Energizer Holdin (29.2500, 29.6400, 29.0200, 29.1700 -0.5800)



EOC bull flag / buy on upside breakout on increased volume

Endesa Chile:NYS (8.3900, 8.4500, 8.3500, 8.4000 +0.0000)



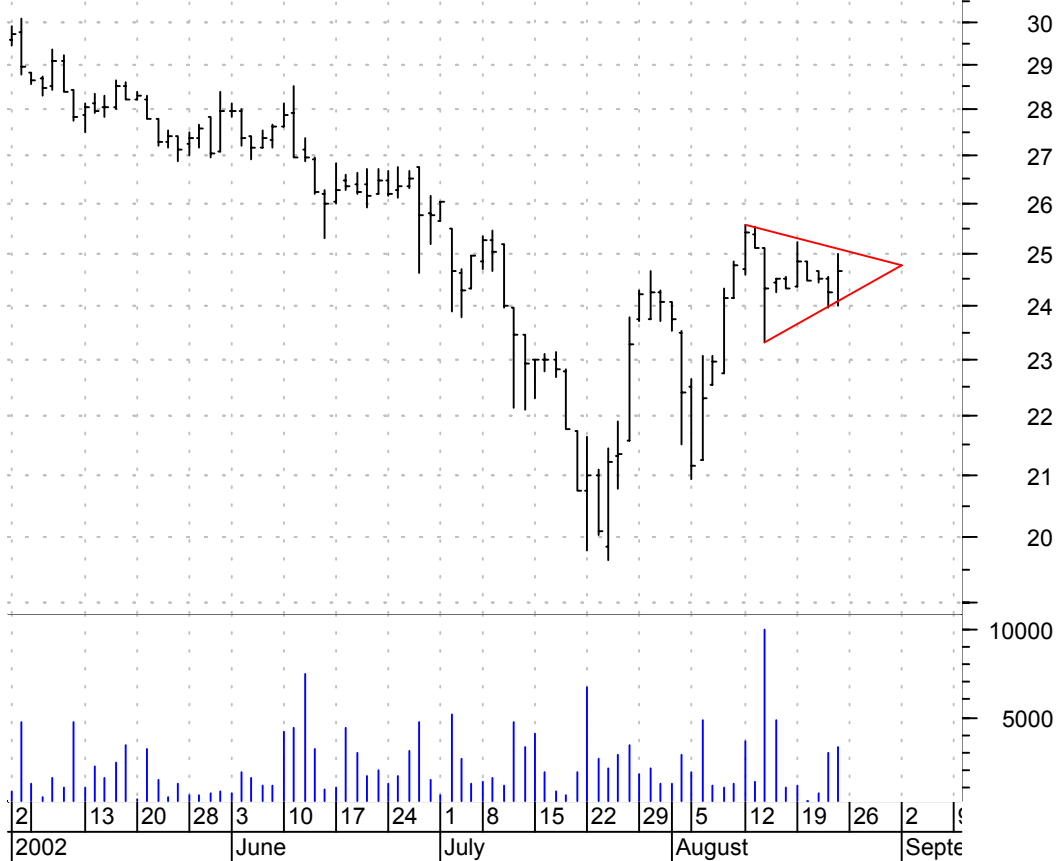
EQT big symm. tri. (more than a yr. In the making) / buy on upside breakout on increased volume

Equitable Resour (36.2500, 36.2600, 35.6100, 35.9200 -0.3600)



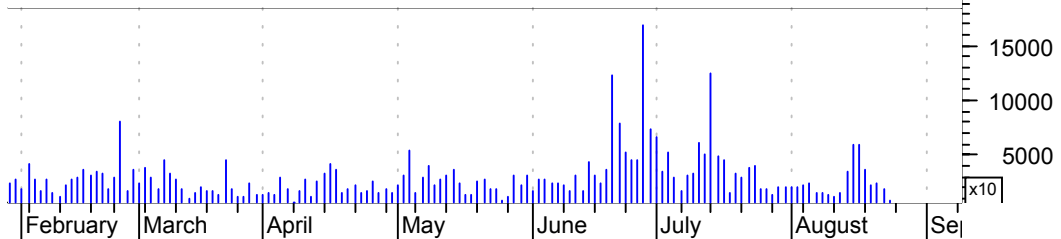
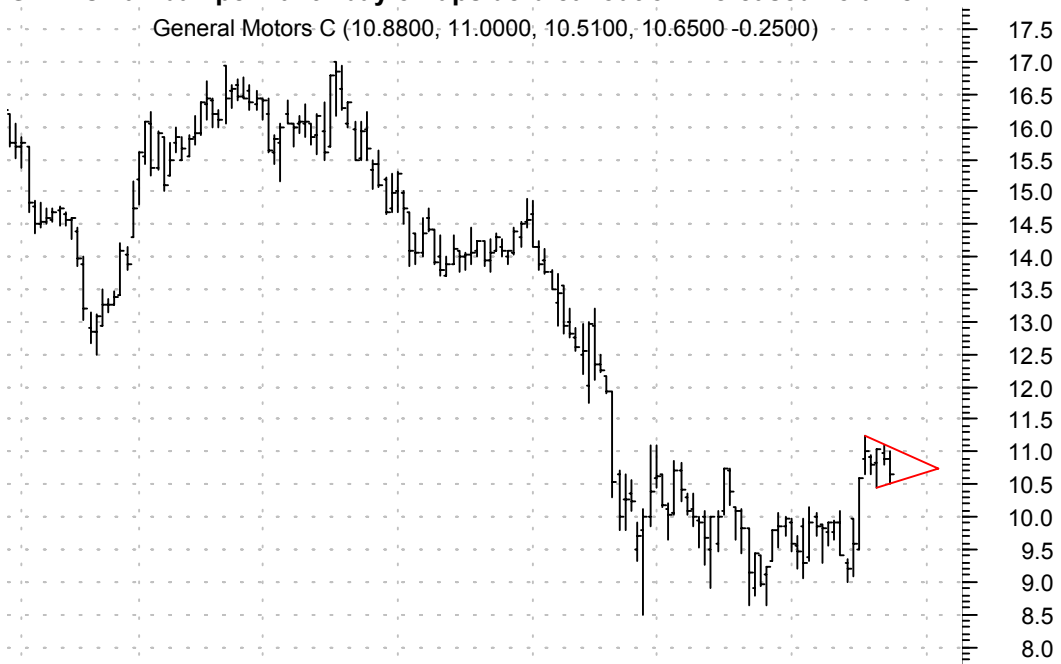
FHR symm. triangle / buy on upside brkout on increased volume

FAIRMONT HOTELS (24.0600, 25.0000, 24.0000, 24.6400 +0.4000)



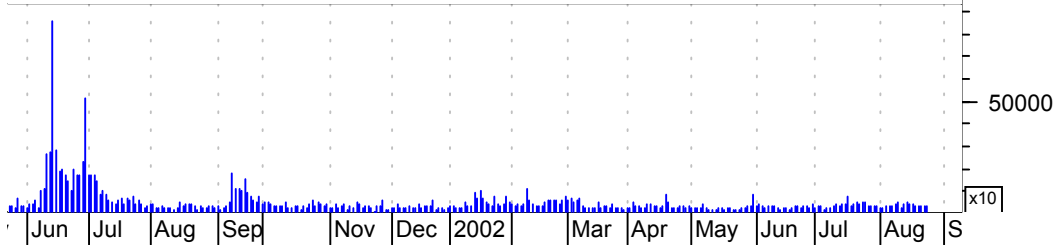
GMH small bull pennant / buy on upside breakout on increased volume

General Motors C (10.8800, 11.0000, 10.5100, 10.6500 -0.2500)



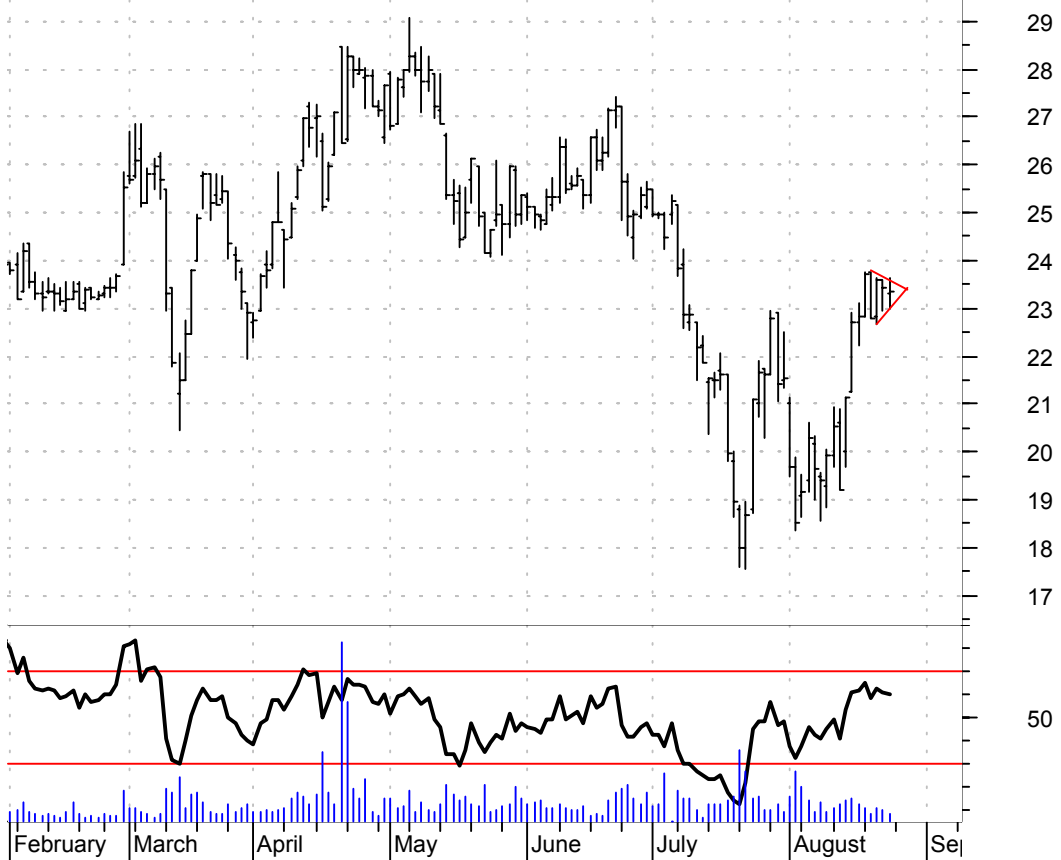
HON rising wedge / sell on downside breakout on increased volume

Honeywell Intern (31.3500, 31.3500, 30.1200, 30.3500 -1.0000)



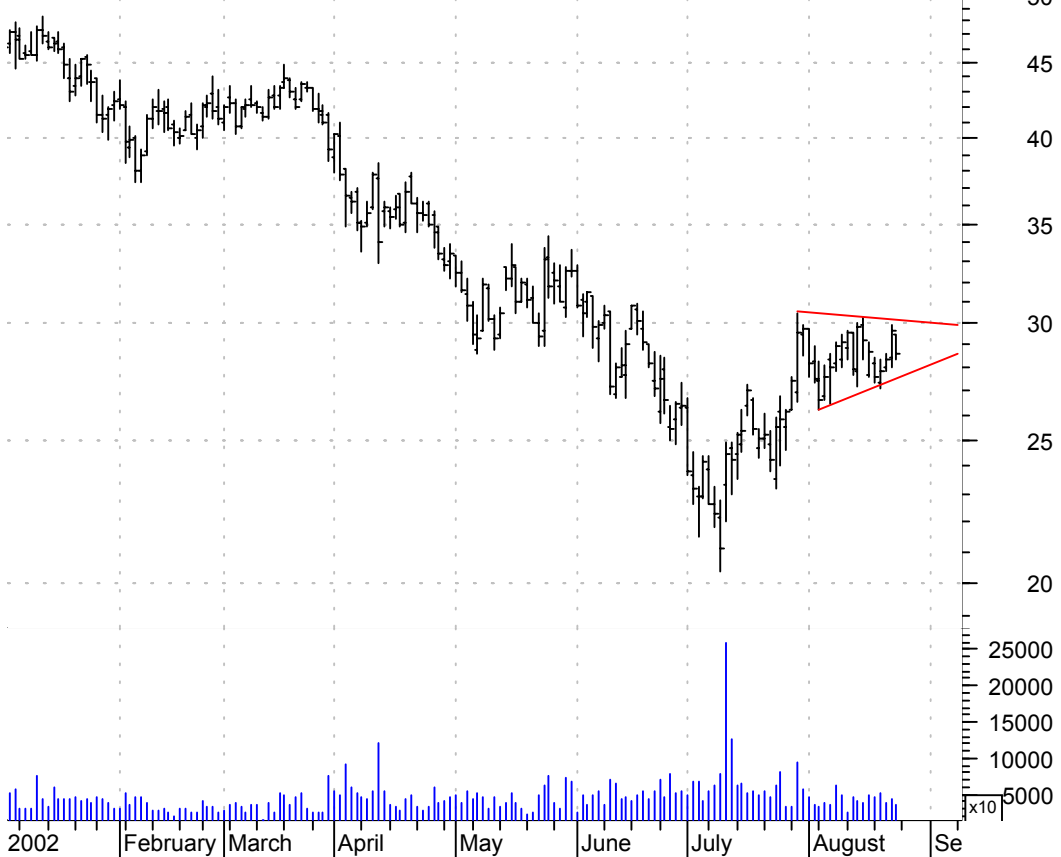
LNy small bull pennant / buy on upside breakout on increased volume

Landry Restauran (23.3300, 23.6400, 22.9700, 23.3400 -0.0900)



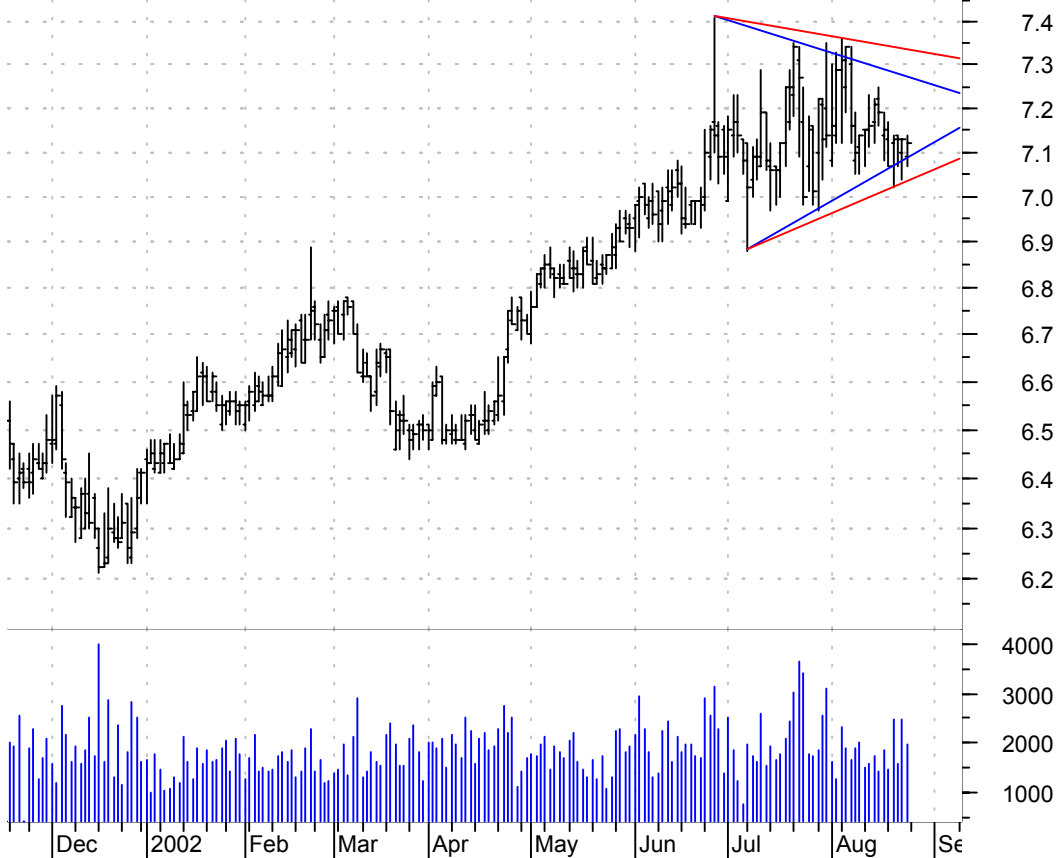
MEDI symm. triangle / buy on upside breakout on increased volume

Medimmune Inc:NA (29.4400, 29.5000, 28.3400, 28.6300 -1.0200)



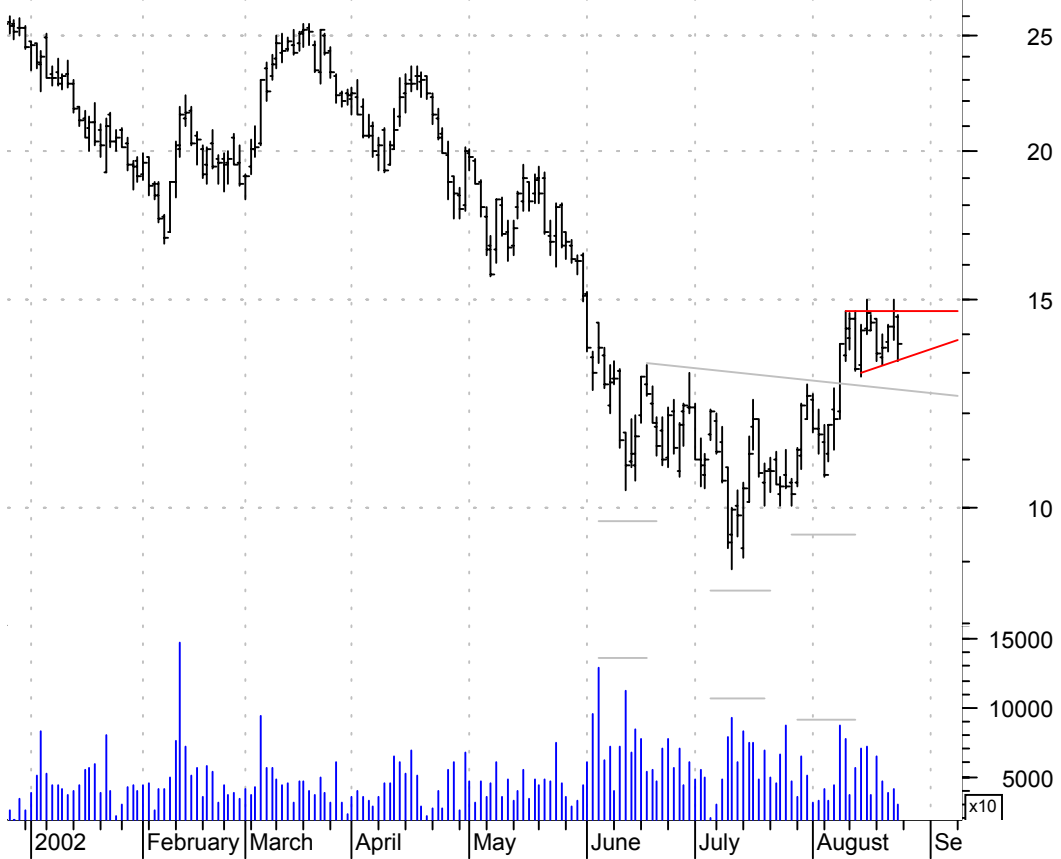
MIN symm. tri. (re-drawn) / buy on upside breakout of blue triangle on increased volume

MFS Intermediate (7.0900, 7.1400, 7.0700, 7.1200 -0.0100)

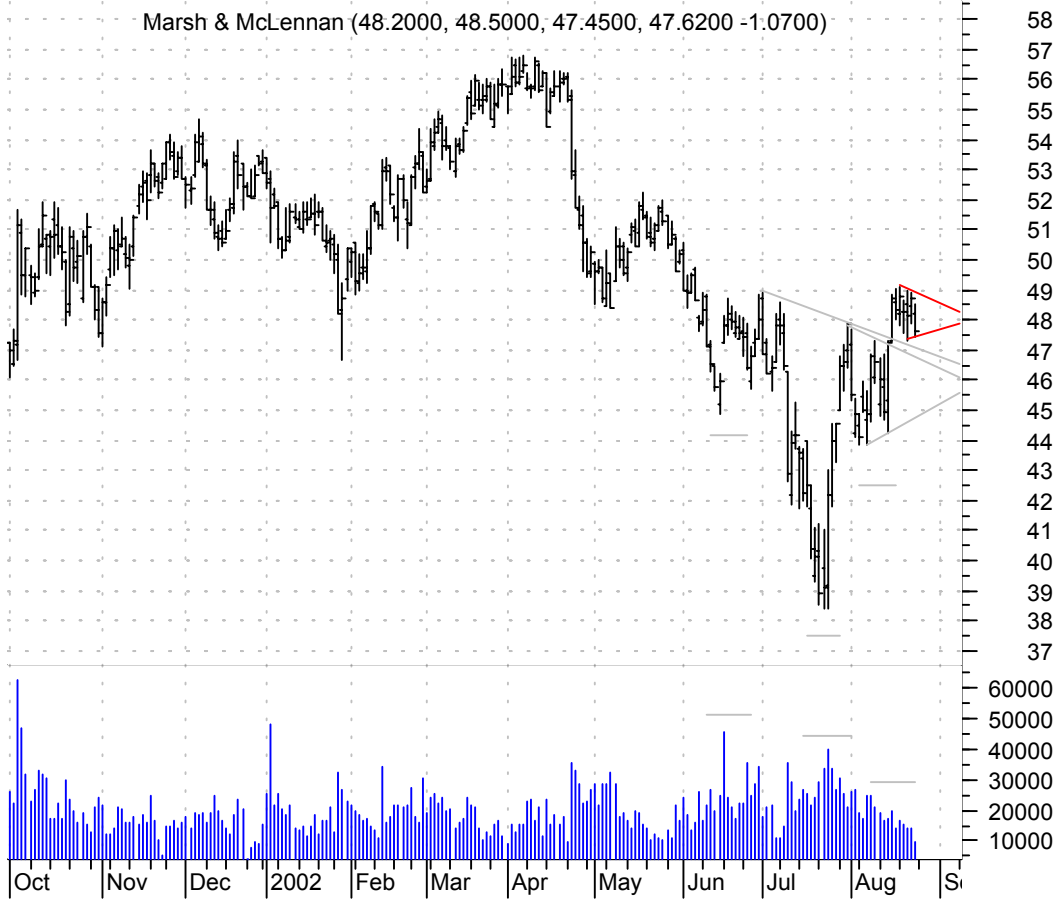


MLNM sloppy asc. tri. after a sloppy inv. h. & sh. brkout / buy on upside breakout on increased volume

Millennium Pharm (14.4900, 14.5500, 13.3000, 13.7600 -0.9000)



MMC small pot. bull pennant, after symm. tri. and inv. h. & sh. brkout / buy on upside brkout on increased volume

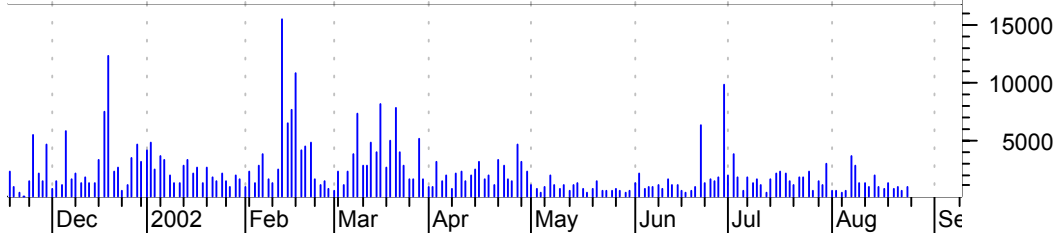


MMS symm. triangle / sell on downside brkout on increased volume



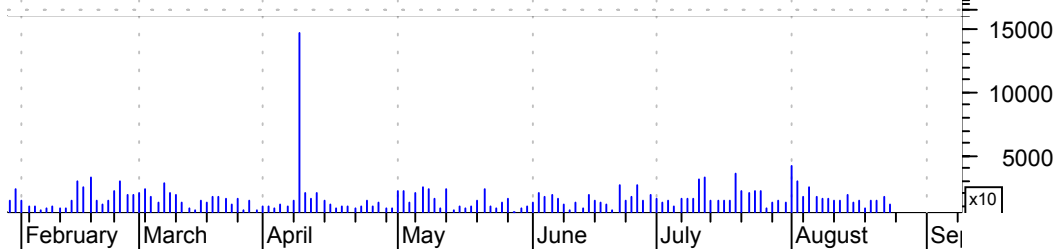
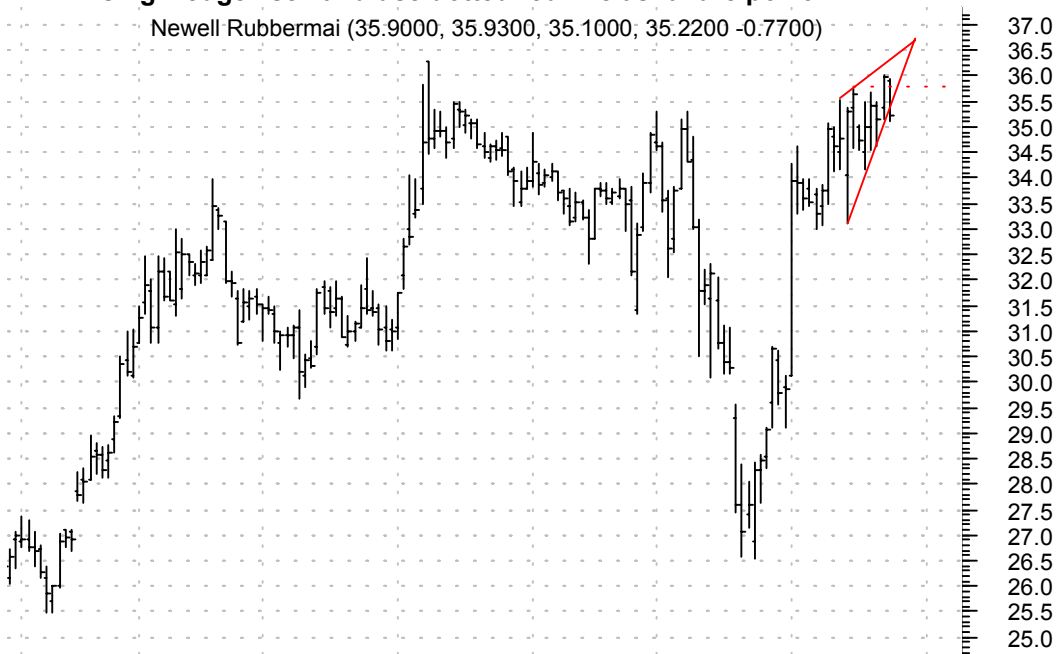
NABI symm. triangle / buy on upside breakout on increased volume

NABI Biopharmace (5.4000, 5.6000, 5.2500, 5.2800 -0.0700)



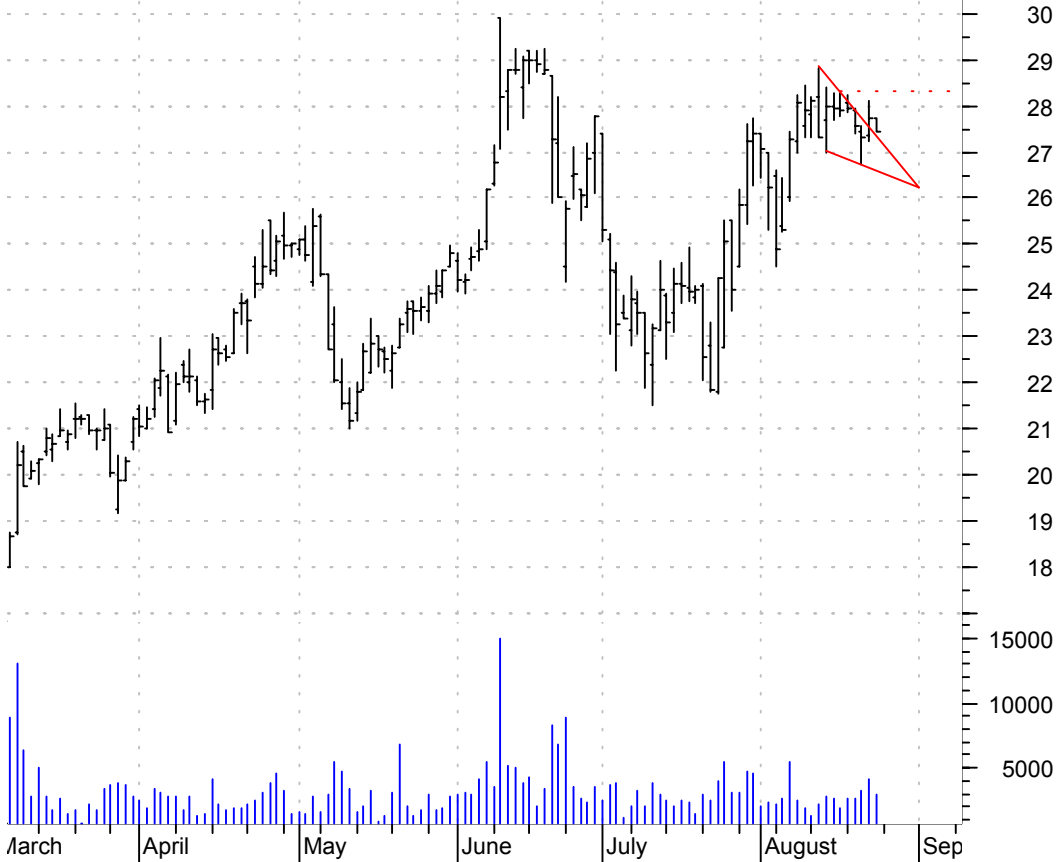
NWL rising wedge / sell and use dotted red line as failure point

Newell Rubbermaid (35.9000, 35.9300, 35.1000, 35.2200 -0.7700)



PRX falling wedge / buy on upside breakout thru dotted red line on increased volume

Pharmaceutical R (27.7200, 27.7200, 27.4500, 27.4600 -0.2700)



PTEK asc. tri. at brkout point of larger symm. tri. / buy on upside brkout of asc. tri. on increased volume

Premiere Tech In (5.7300, 5.7300, 5.4800, 5.4900 -0.2500)



PXD small bullish pennant / buy on upside breakout on increased volume

Pioneer Natural (25.4600, 25.4600, 24.7000, 25.1700 -0.2800)

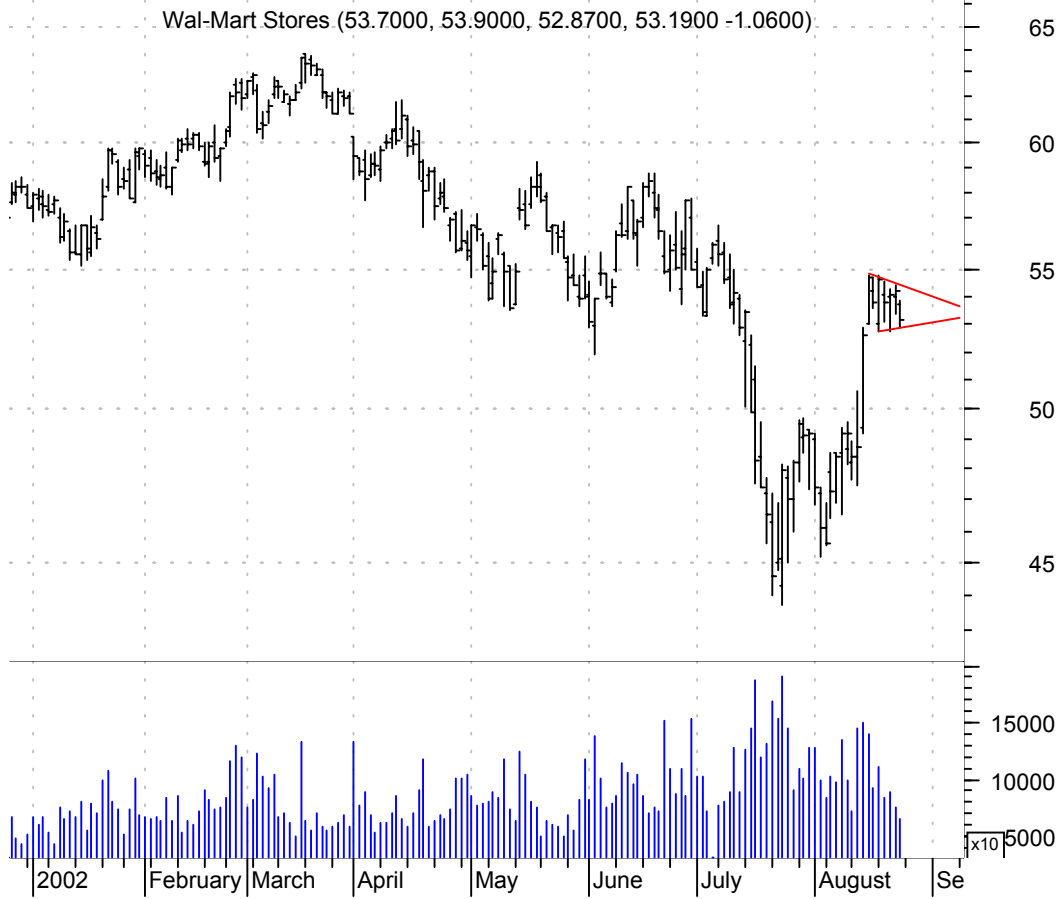


SAXN symm. triangle / buy on upside breakout on increased volume

SAXON CAPITAL IN (13.6900, 14.2000, 13.2900, 13.9000 -0.1000)



WMT bull pennant / buy on upside breakout on increased volume



chartpatterns.com
Chart Pattern Analysis for Timing the Markets

KMatras@aol.com