

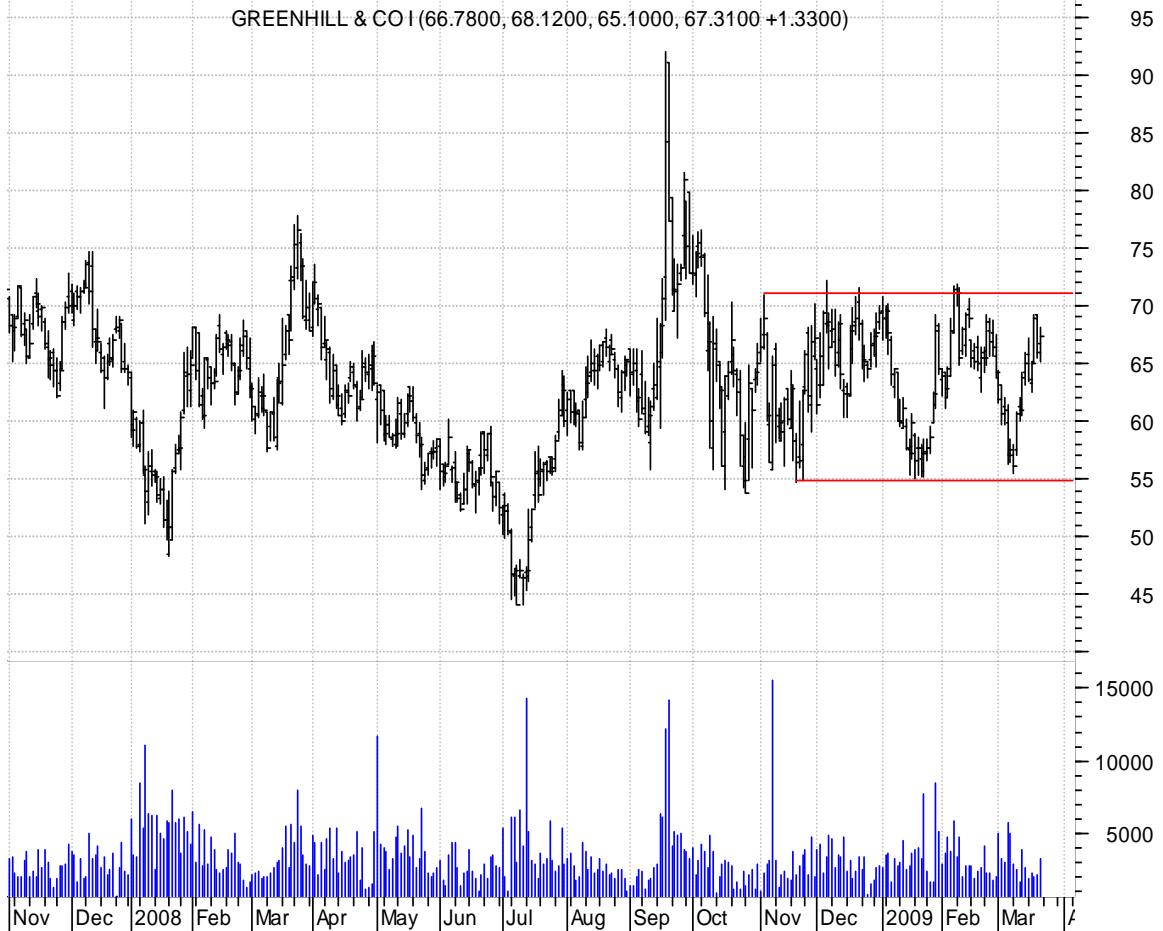
**COG rising wedge brkout & retracement / sell on downside continuation on increased volume**

Cabot Oil & Gas (26.7000, 26.7600, 24.8700, 25.1400 -1.2800)



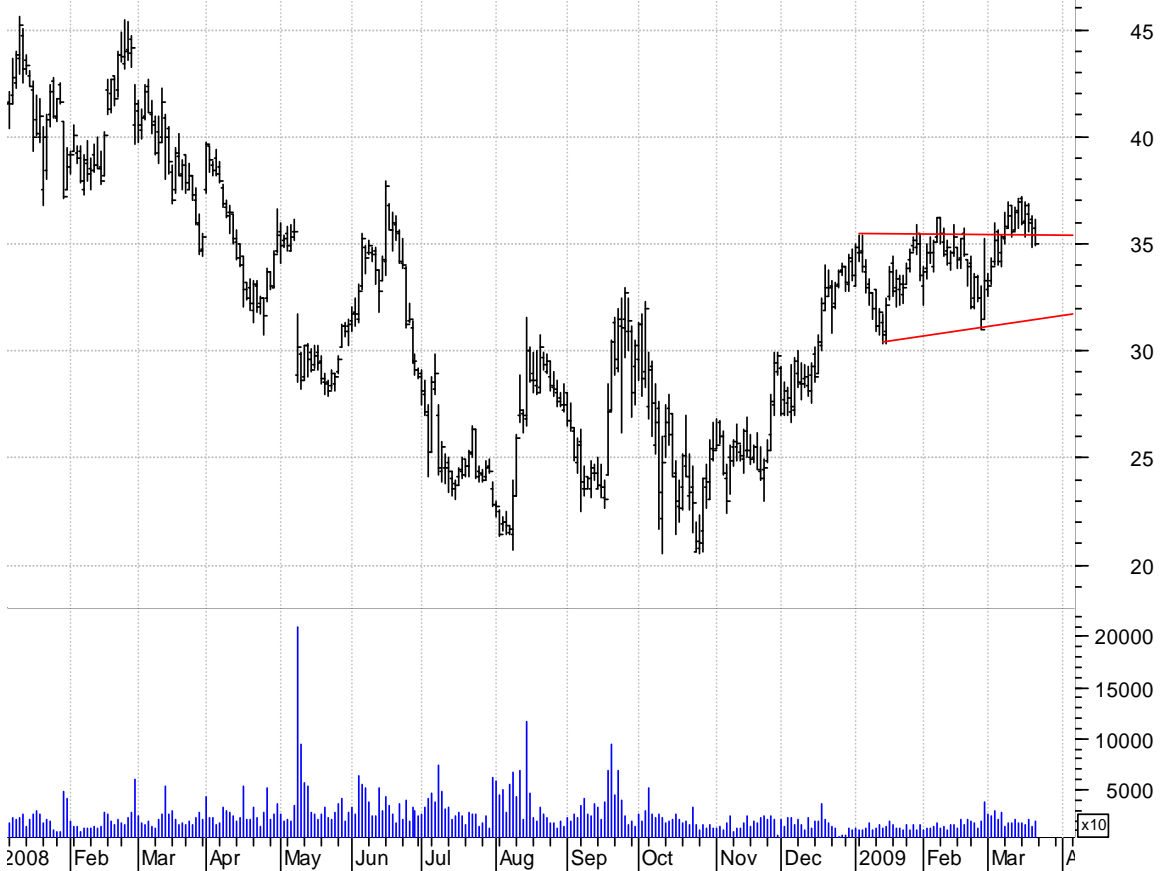
**GHL rectangle / buy on upside brkout on increased volume**

GREENHILL & CO I (66.7800, 68.1200, 65.1000, 67.3100 +1.3300)



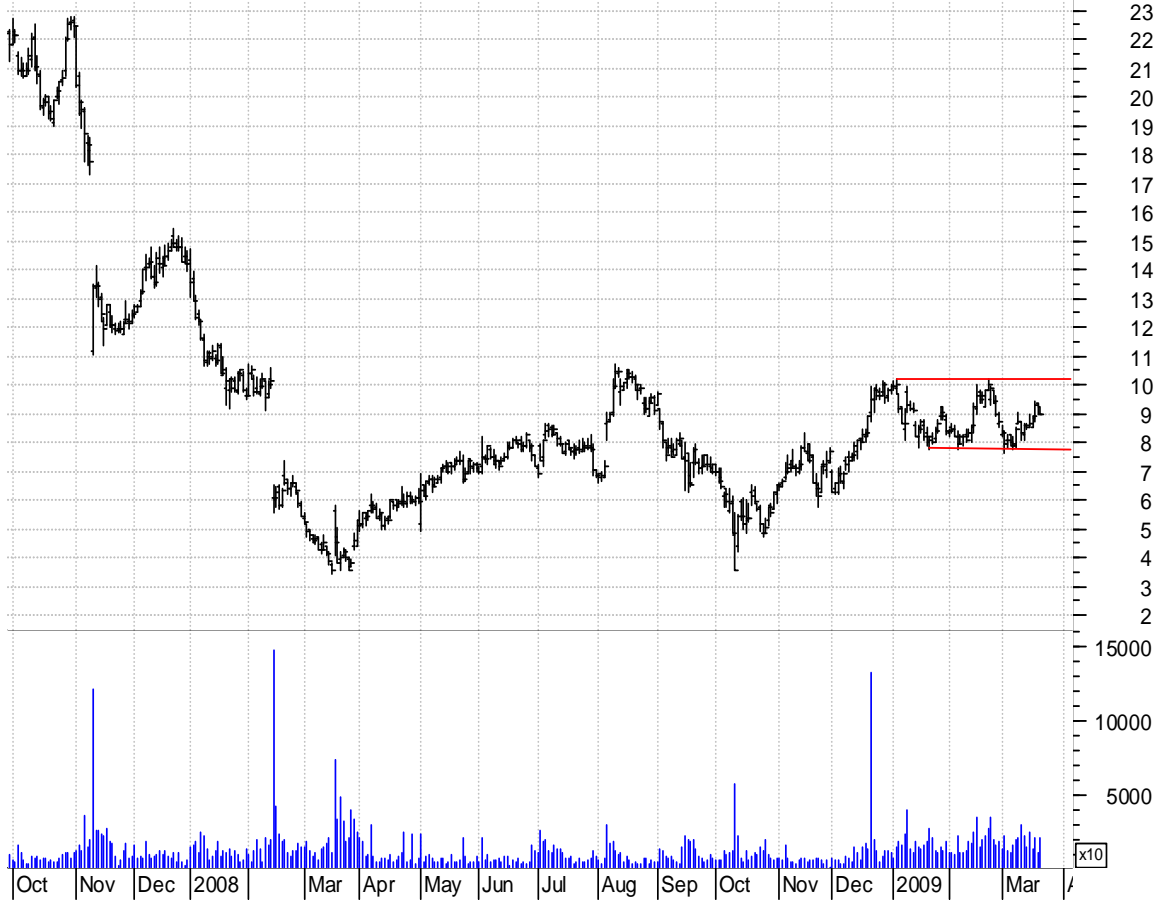
### HANS asc. tri. brkout and retracement / buy on upside continuation on increased volume

Hansen Natural C (35.7700, 36.1300, 34.9100, 35.0000 -0.3800)



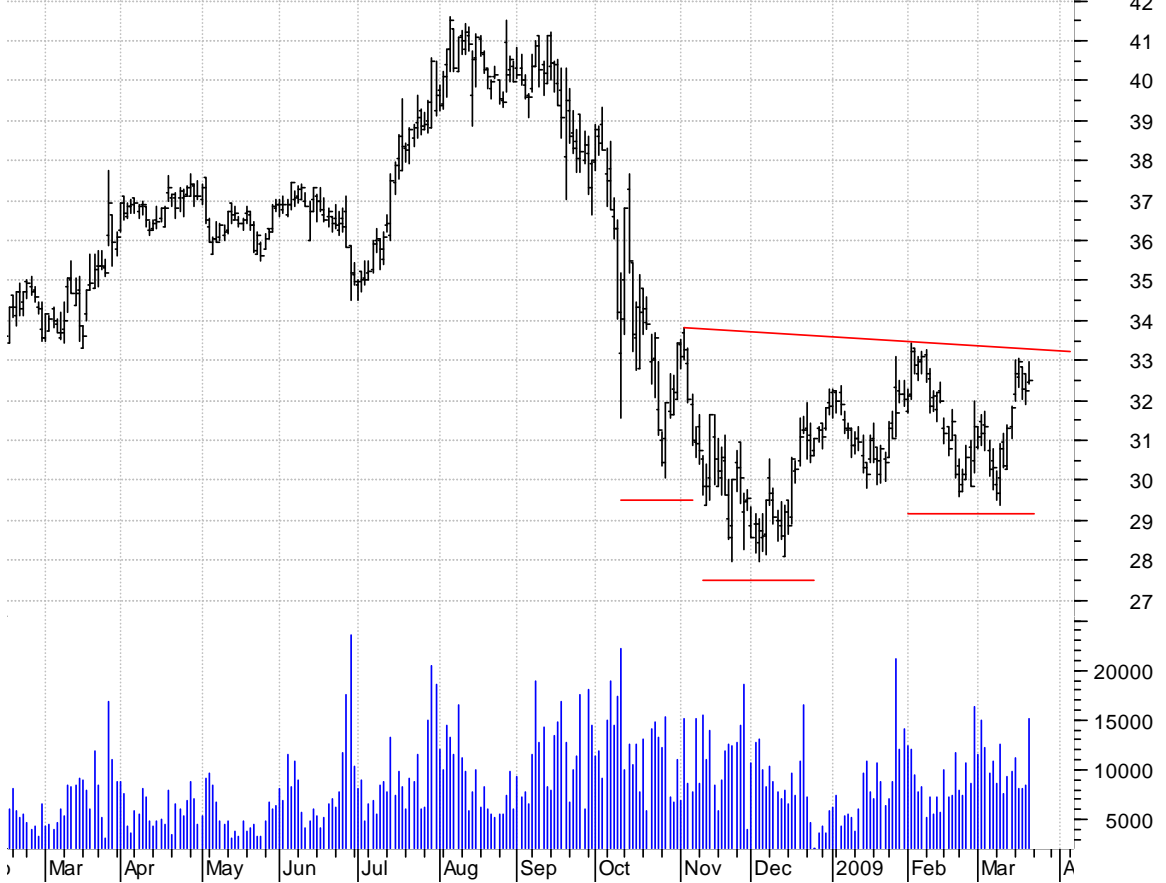
### MDRX rectangle / buy on upside brkout on increased volume

Allscripts-Misys (9.2300, 9.2300, 8.9800, 8.9900 +0.000)



**MKC inv. h. & sh. / buy on upside brkout on larger than normal volume**

McCormick & Co:N (32.4400, 32.9500, 32.4000, 32.4800 +0.2300)



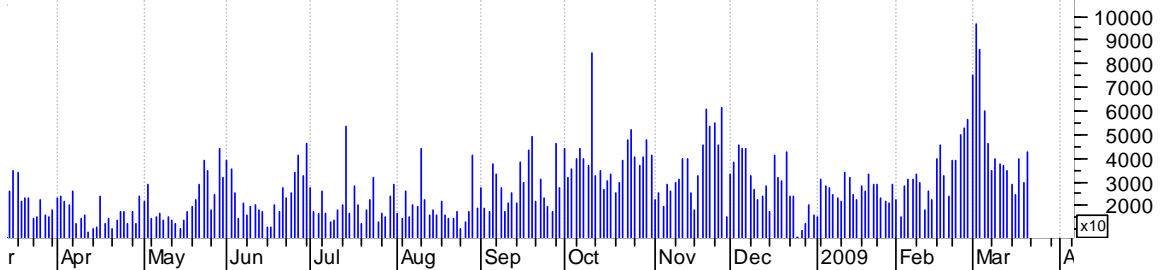
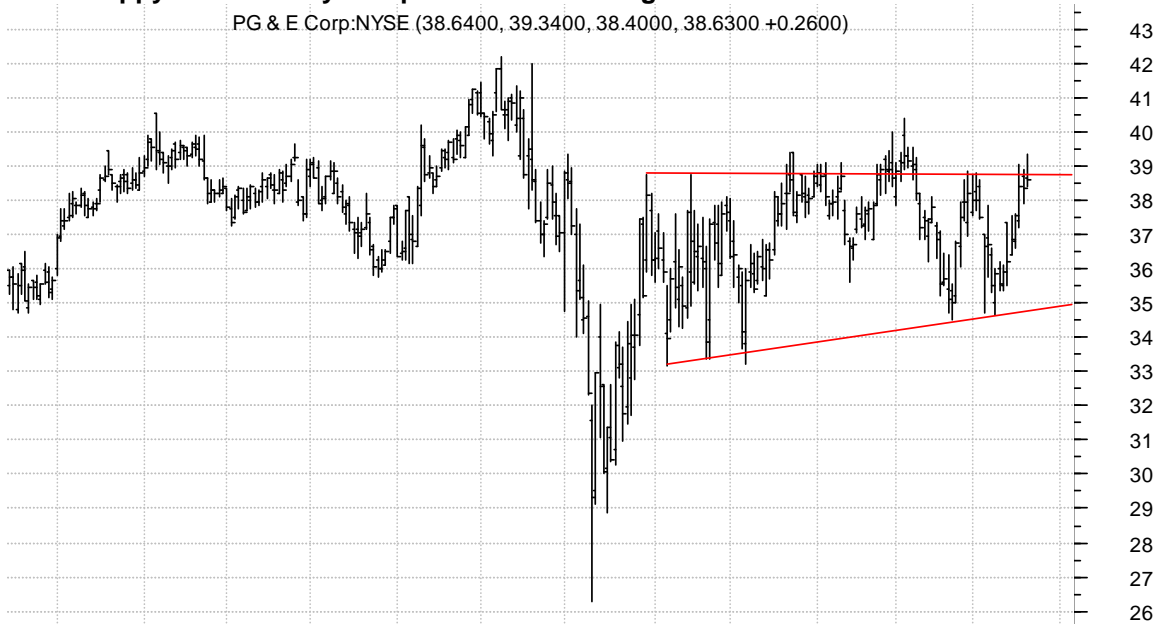
**NCMI symm. tri. / buy on upside brkout on increased volume**

National CineMed (13.5300, 13.6500, 12.6500, 12.7300 -0.7100)



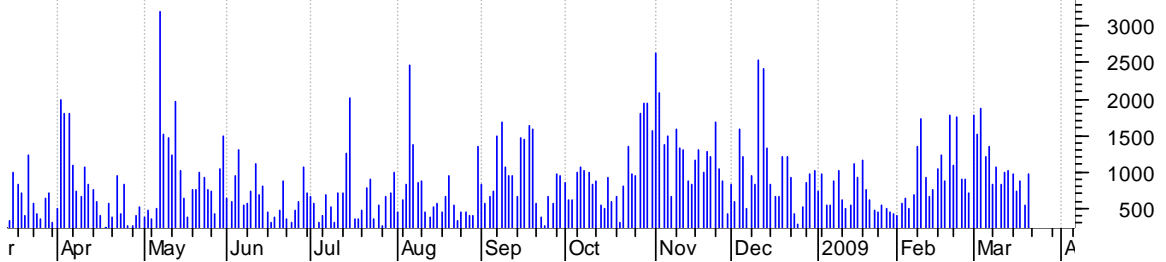
**PCG sloppy asc. tri. / buy on upside brkout on larger than normal volume**

PG & E Corp:NYSE (38.6400, 39.3400, 38.4000, 38.6300 +0.2600)



**POWL symm. tri. brkout & retracement / buy on upside brkout thru dotted red line on increased vol**

Powell Ind Inc:O (33.4300, 33.5600, 31.5500, 31.5700 -1.5300)



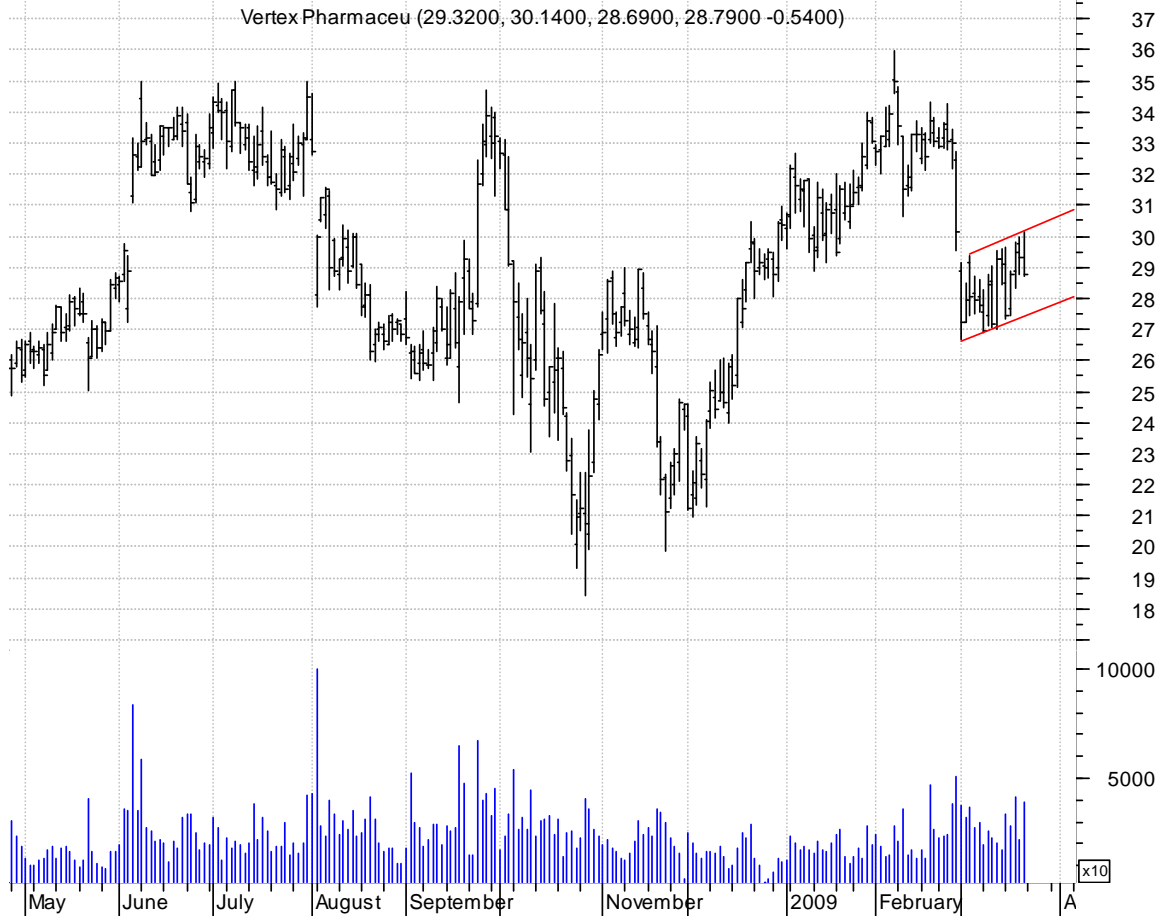
**SMSC inv. h. & sh. / buy on upside continuation in larger than normal volume**



**VR falling wedge / buy on upside continuation on larger than normal volume**



# VRTX bear flag / sell on downside brkout on larger than normal volume



**chartpatterns.com**  
Chart Pattern Analysis for Timing the Markets

[KMatras@aol.com](mailto:KMatras@aol.com)