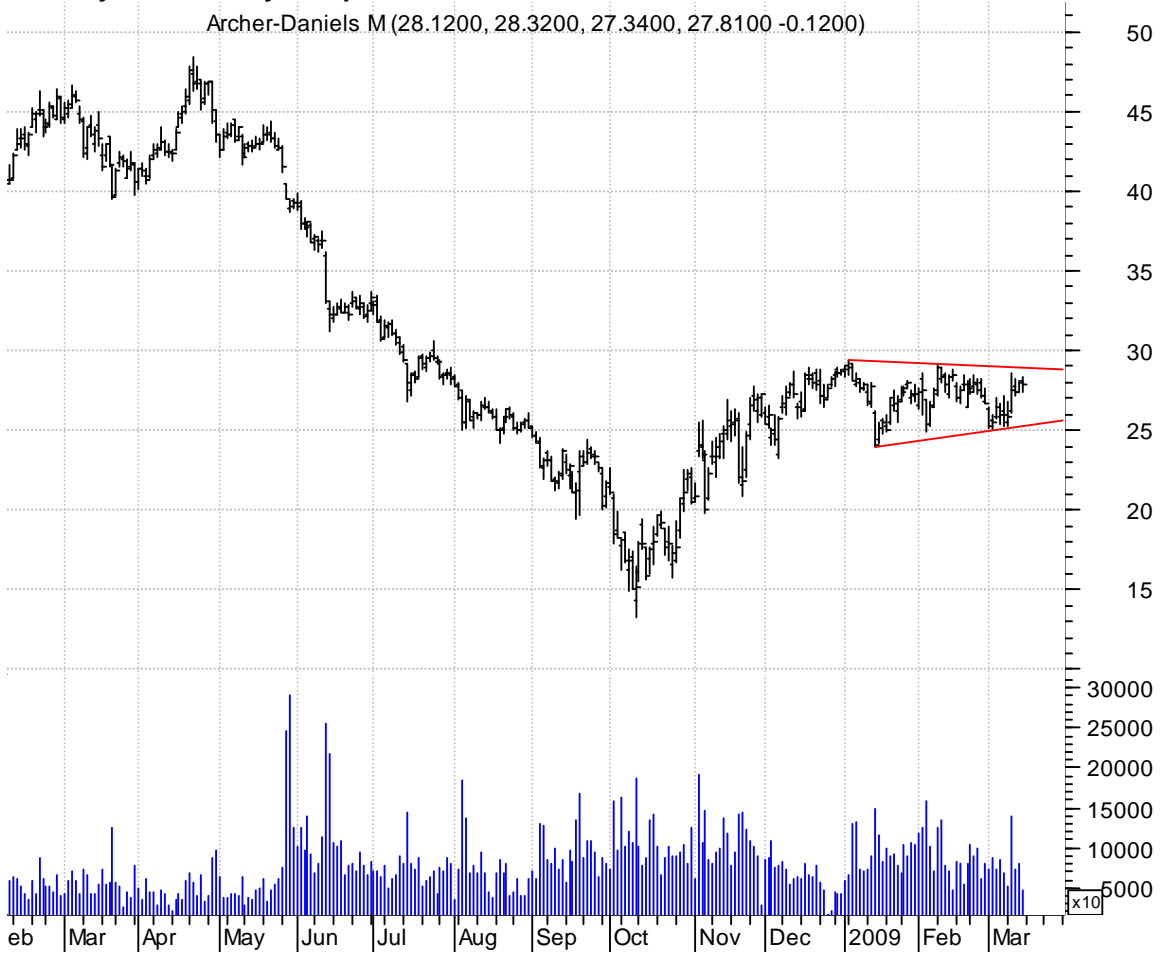


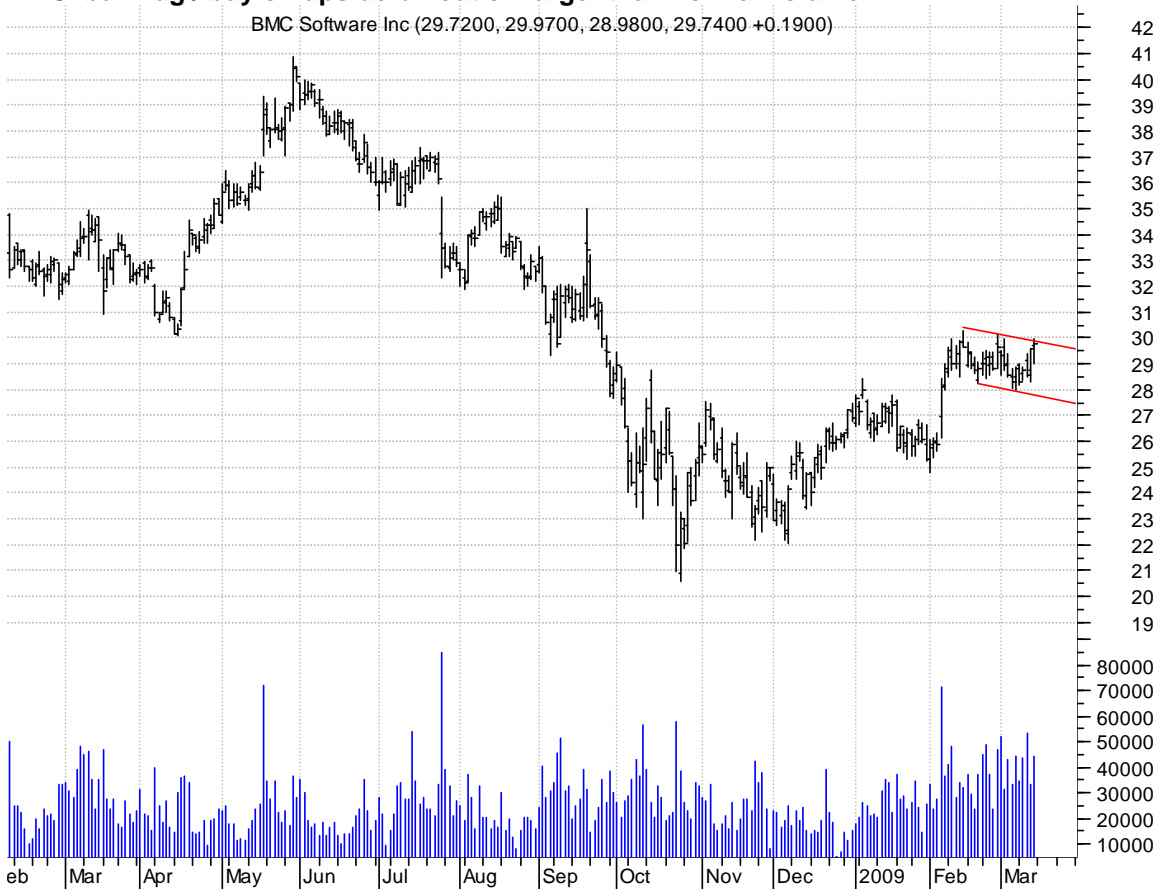
**ADM symm. tri. / buy on upside brkout on increased volume**

Archer-Daniels M (28.1200, 28.3200, 27.3400, 27.8100 -0.1200)



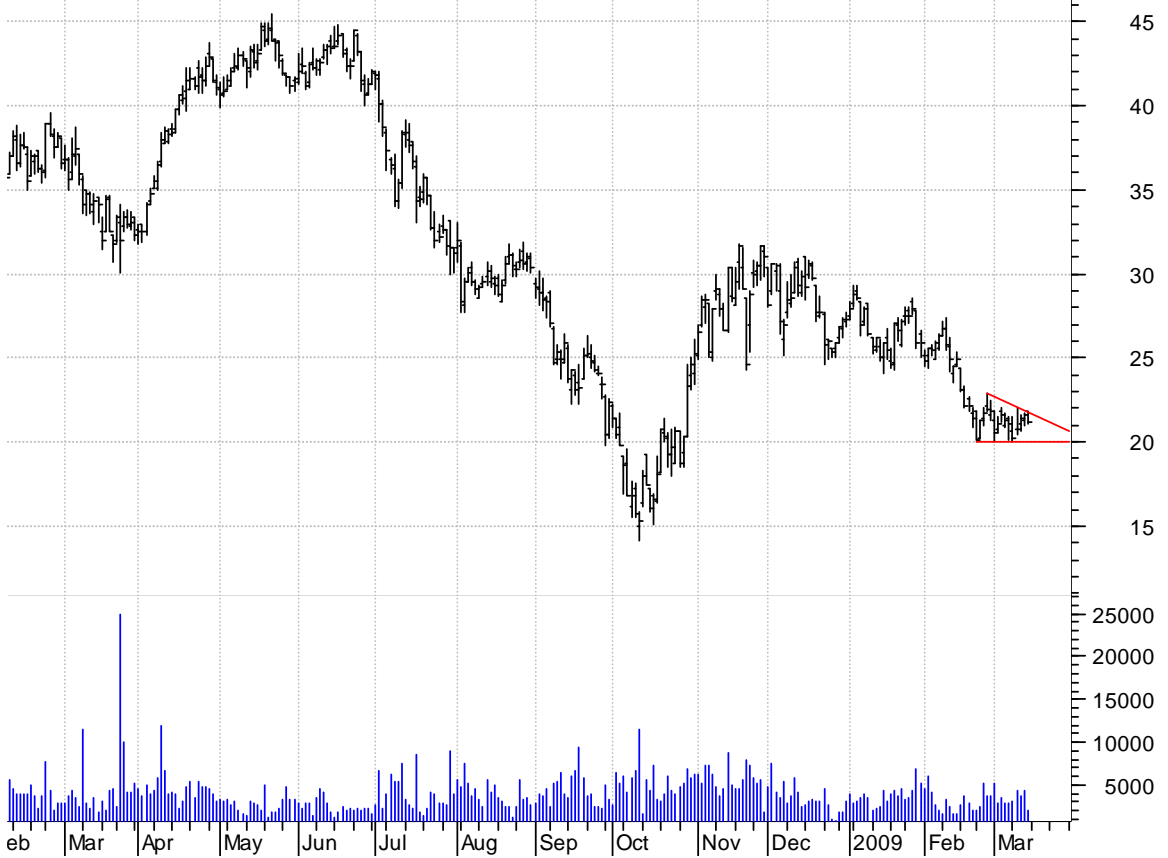
**BMC bull flag / buy on upside brkout on larger than normal volume**

BMC Software Inc (29.7200, 29.9700, 28.9800, 29.7400 +0.1900)



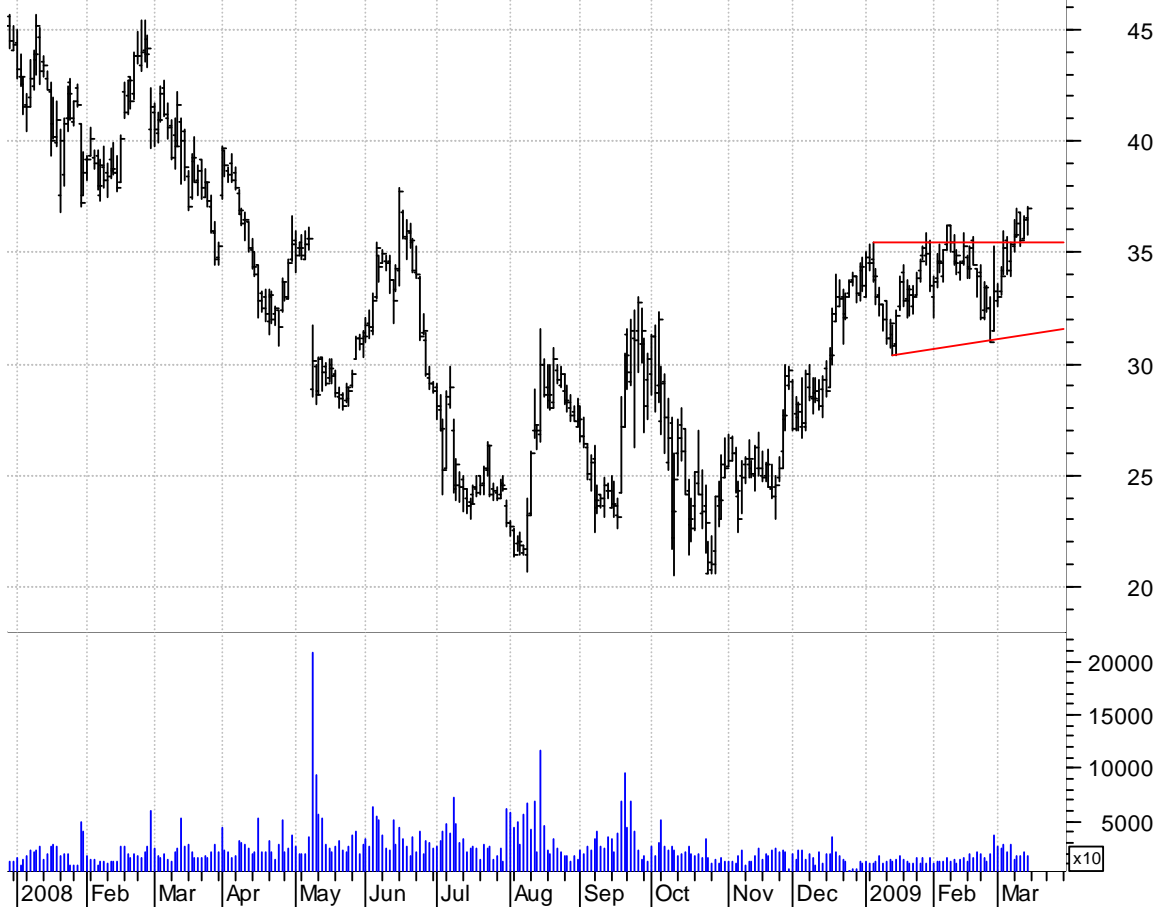
**CXG desc. tri. preceded by 'pole-like' move / sell on downside brkout on increased volume**

CNX GAS CORPORAT (21.8400, 21.8700, 21.0300, 21.2200 -0.3600)



**HANS asc. tri. / buy on upside continuation on increased volume**

Hansen Natural C (36.5400, 37.0800, 35.7600, 36.9900 +0.5200)



**NSH asc. tri. / buy on upside brkout on larger than volume**

Nustar Hldgs UT: (20.3600, 20.6000, 19.6400, 19.9300 -0.2000)



**OMTR inv. h. & sh. / buy on retracement to neckline or upside continuation**

OMNITURE INC:OTC (12.9800, 13.0000, 12.4500, 12.6000 -0.3700)



**PHH bullish flagging / buy on upside breakout on increased volume**

Phh Cor:NYSE (11.6000, 12.2600, 11.5300, 12.1900 +0.6500)



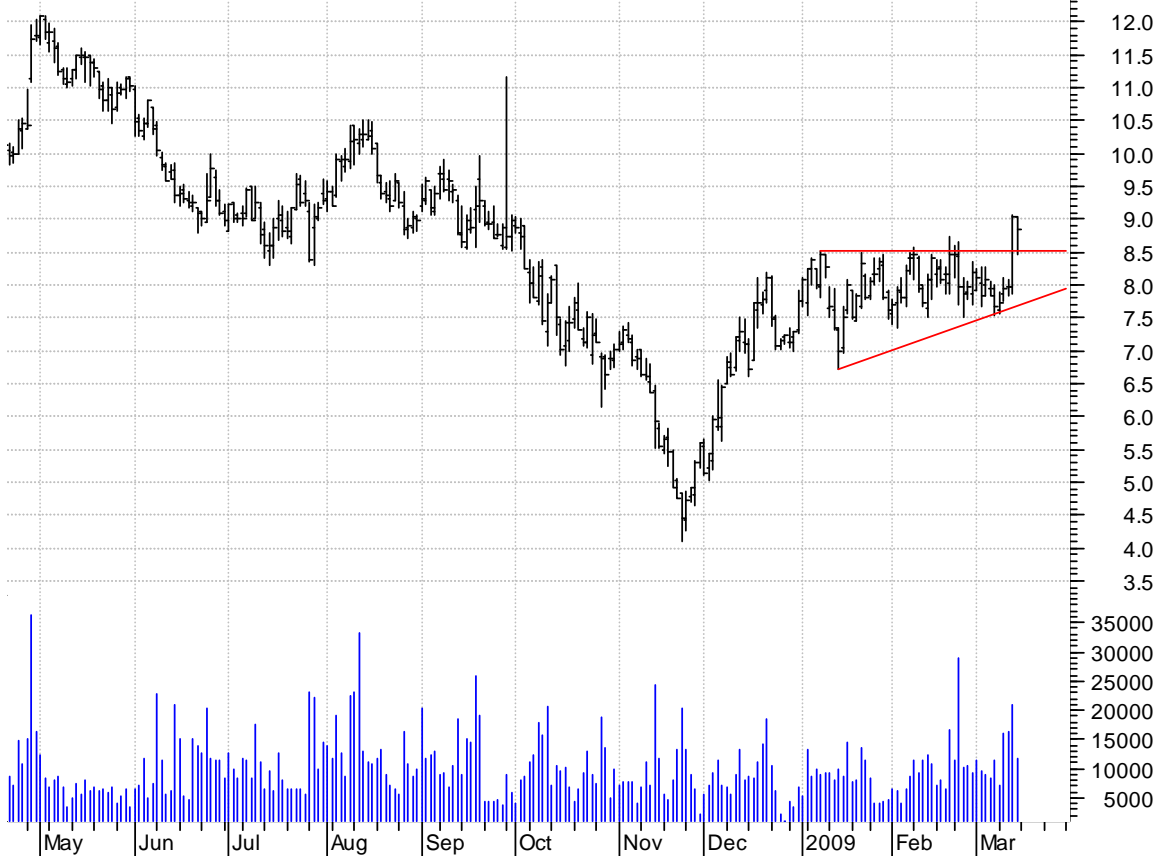
**SMSC inv. h. & sh. / buy on upside breakout on increased volume**

Standard Microsy (15.6800, 16.2300, 15.5900, 16.0100 +0.4100)



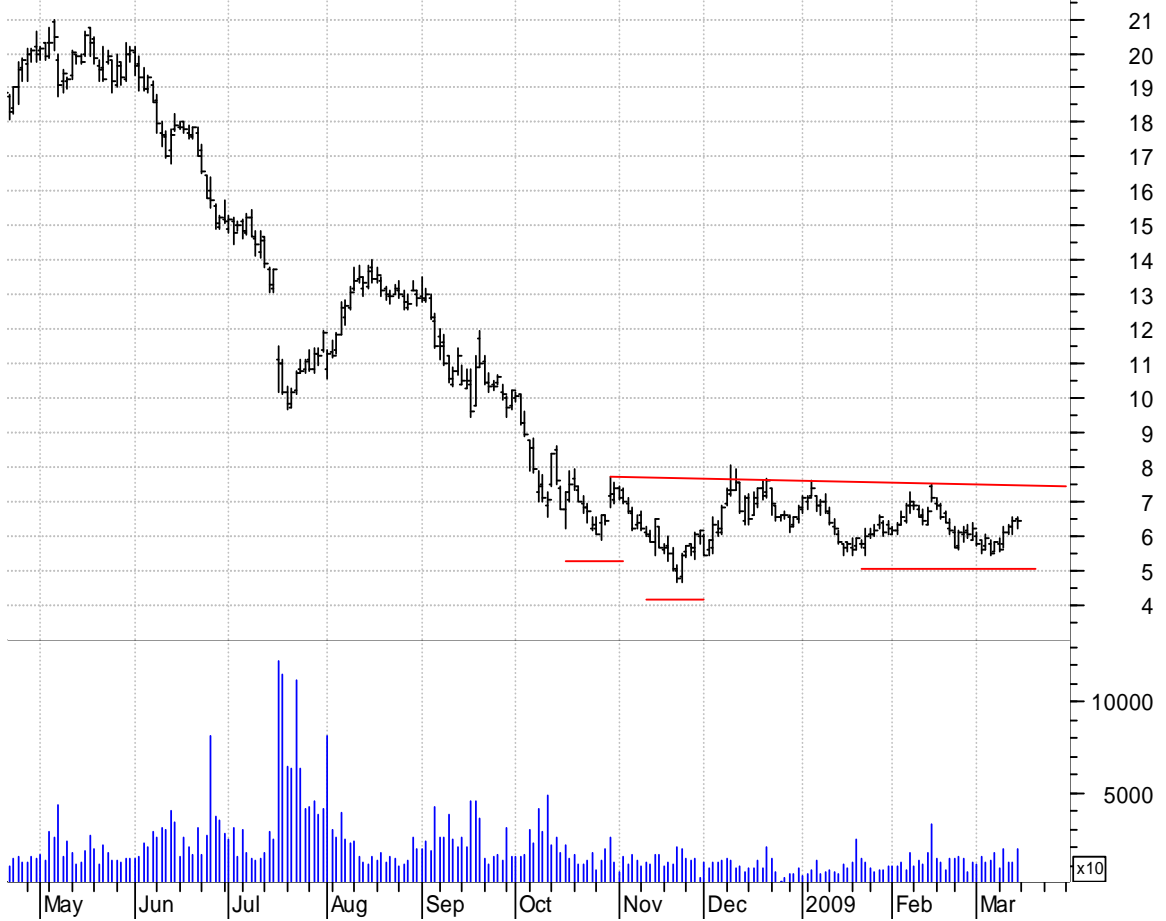
**TXRH asc. tri. / buy on upside continuation on larger than normal volume**

TEXAS ROADHOUSE (9.0300, 9.0300, 8.4700, 8.8400 -0.2000)



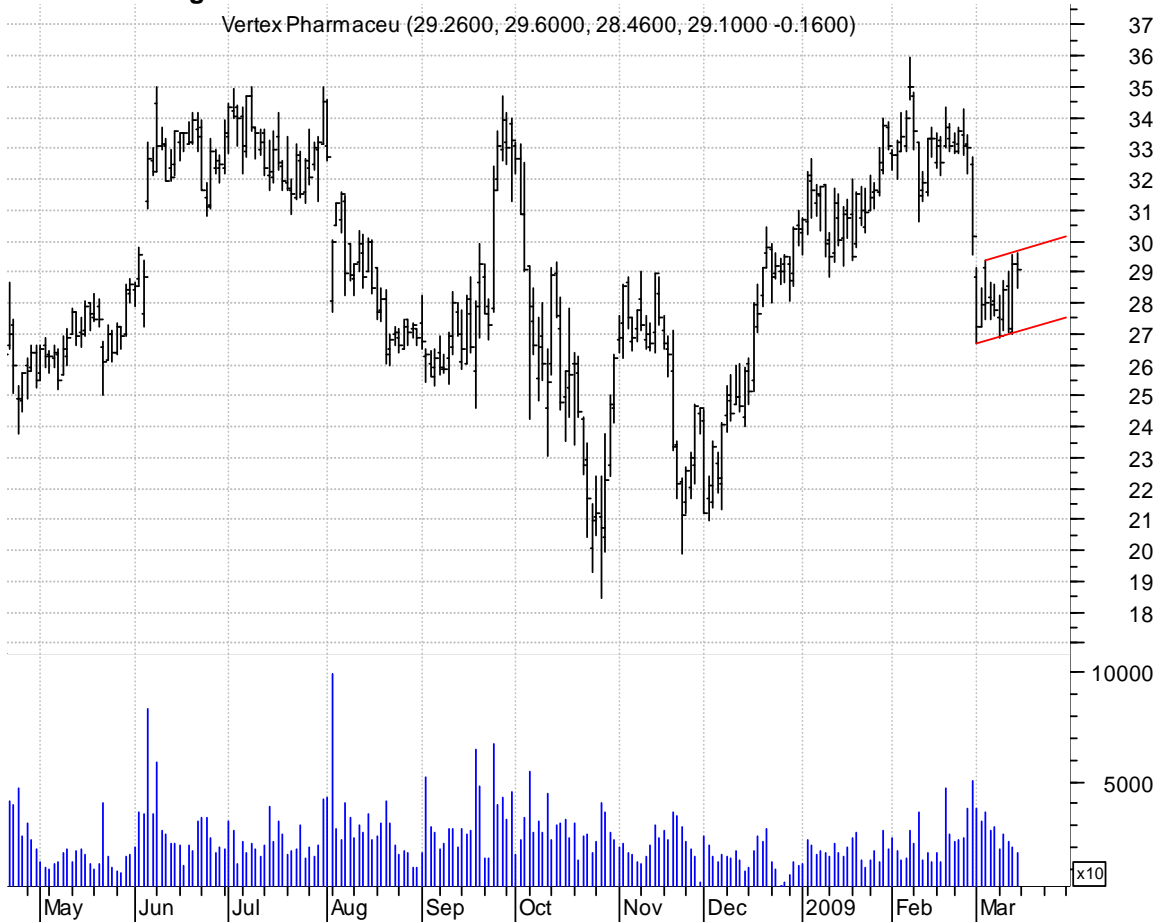
**VCLK inv. h. & sh. / buy on upside breakout on increased volume**

Valueclick Inc:O (6.5000, 6.5800, 6.2700, 6.4700 +0.000)



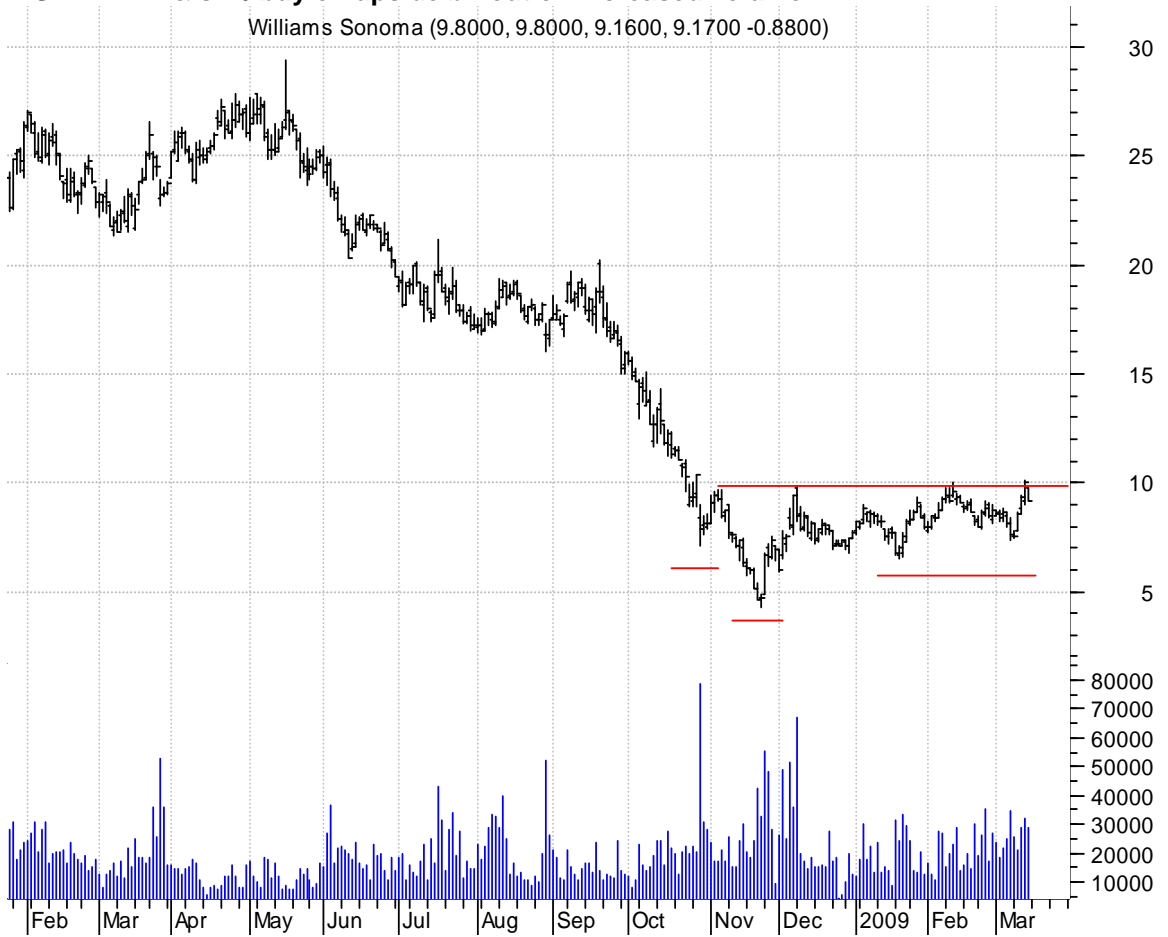
**VRTX bear flag / sell on downside brkout on increased volume**

Vertex Pharmaceu (29.2600, 29.6000, 28.4600, 29.1000 -0.1600)



**WSM inv. h. & sh. / buy on upside brkout on increased volume**

Williams Sonoma (9.8000, 9.8000, 9.1600, 9.1700 -0.8800)



**chartpatterns.com**  
Chart Pattern Analysis for Timing the Markets

[KMatras@aol.com](mailto:KMatras@aol.com)