

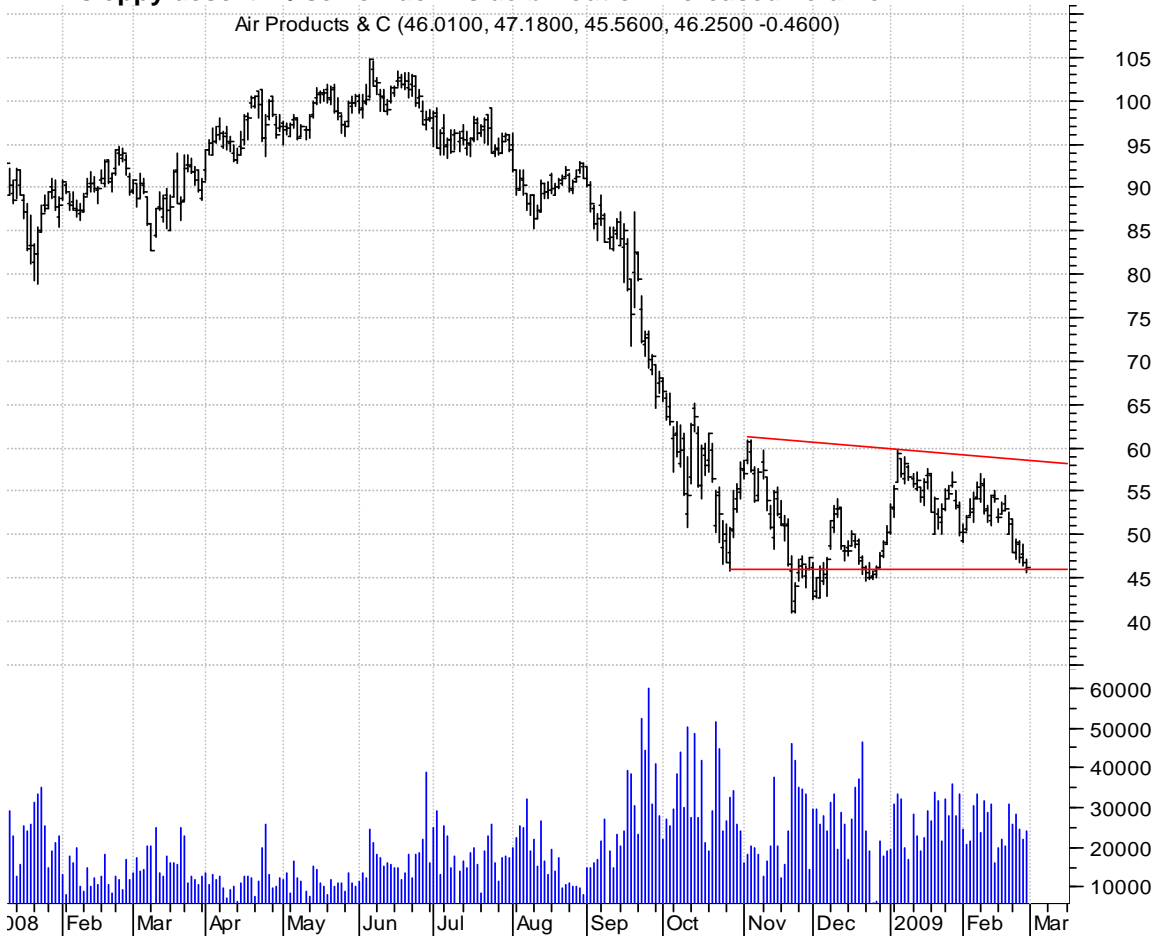
**ANR rectangle / sell on downside brkout on increased volume**

ALPHA NATURAL RE (17.3400, 19.1600, 17.0000, 18.4000 +0.3100)



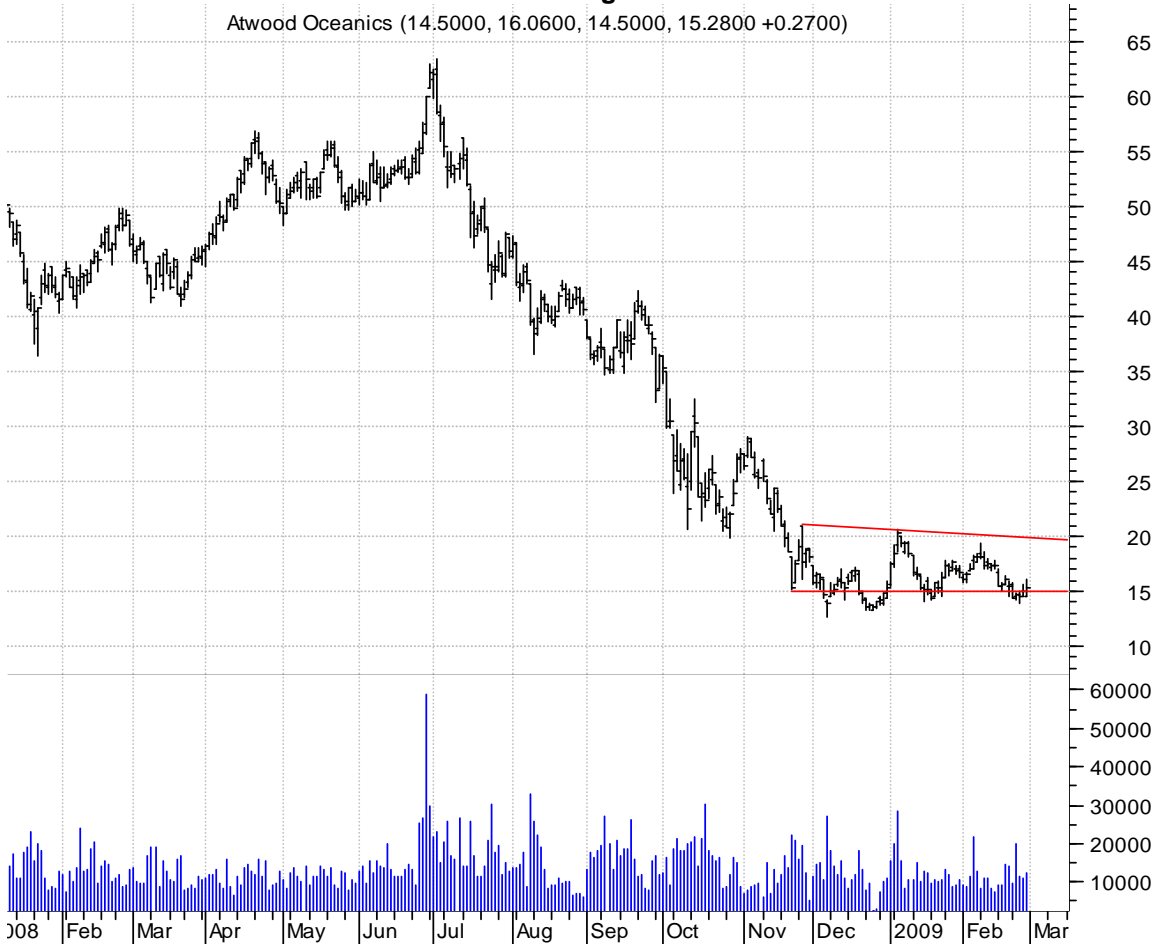
**APD sloppy desc. tri. / sell on downside brkout on increased volume**

Air Products & C (46.0100, 47.1800, 45.5600, 46.2500 -0.4600)



**ATW desc. tri. / sell on downside brkout on larger than normal volume**

Atwood Oceanics (14.5000, 16.0600, 14.5000, 15.2800 +0.2700)



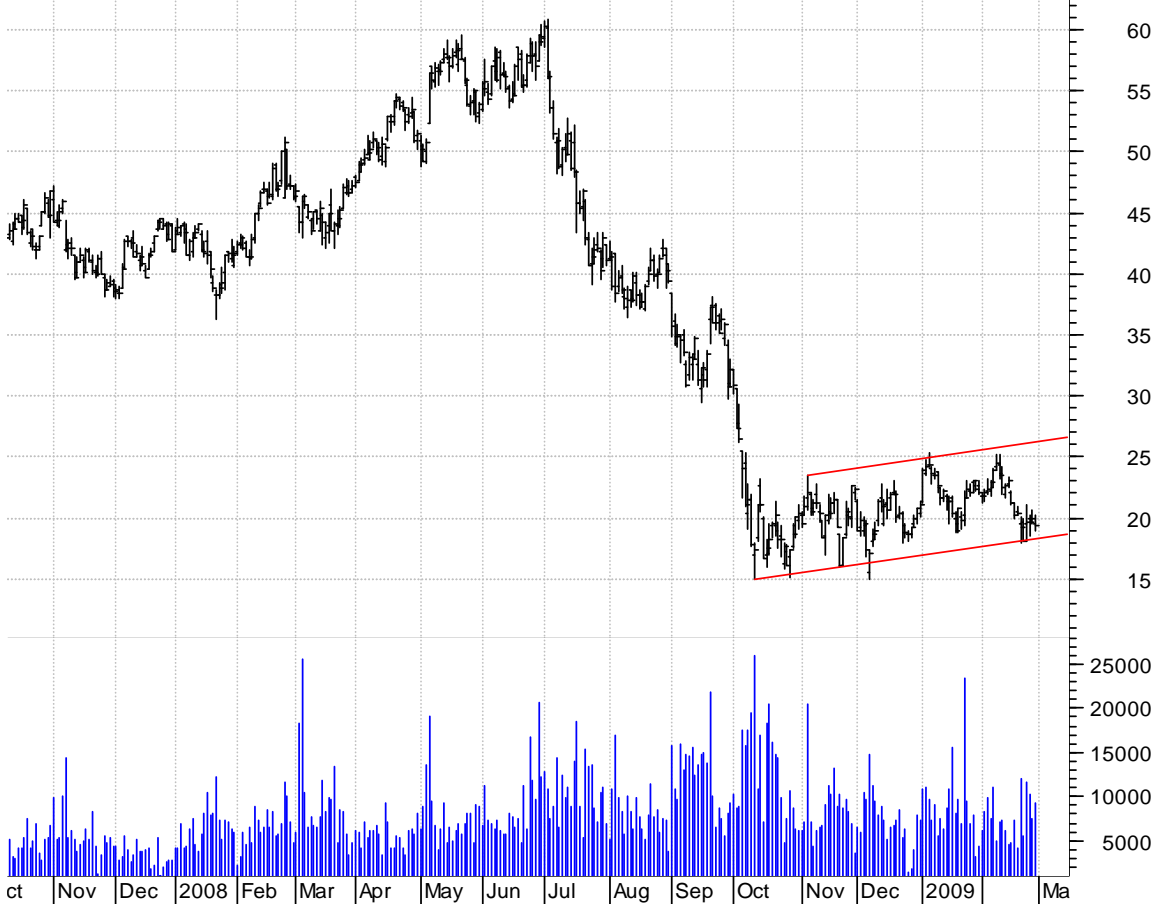
**AVP desc. tri. / sell on downside brkout on larger than normal volume**

Avon Products In (18.1500, 18.2400, 17.5300, 17.5900 -0.6800)



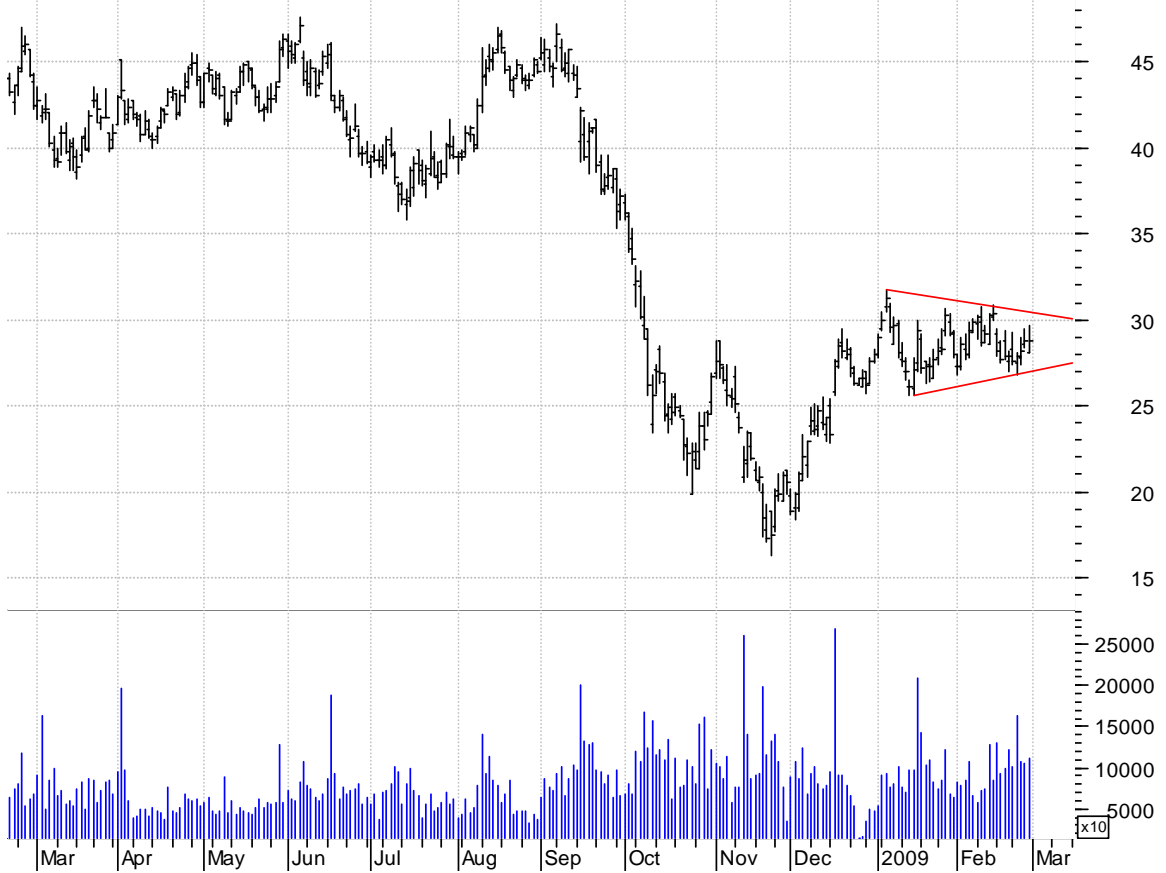
**BBG bear flagging / sell on downside brkout on larger than normal volume**

Bill Barrett Cor (19.5000, 20.2800, 18.9600, 19.3400 -0.5900)



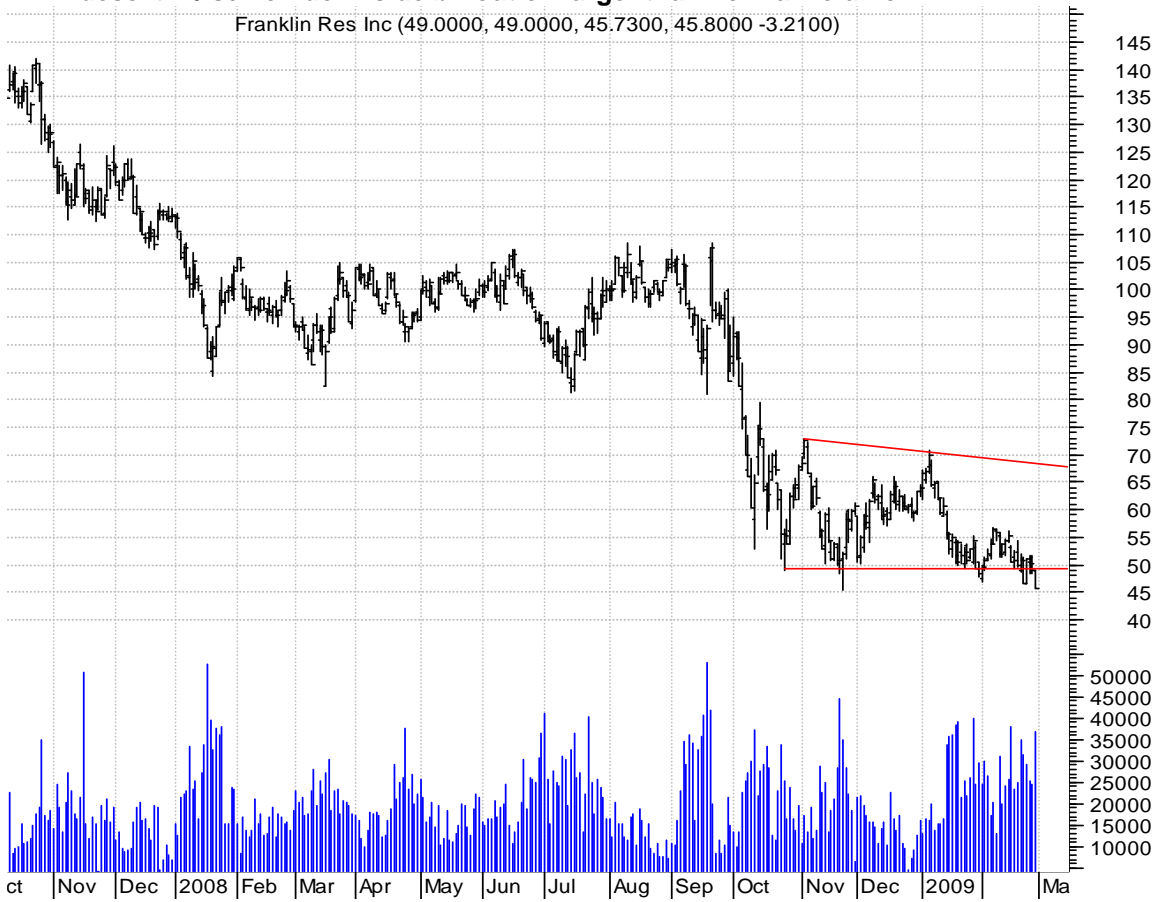
**BBY symm. tri. / buy on upside brkout on larger than normal volume**

Best Buy Co. Inc (28.0500, 29.6500, 28.0500, 28.8200 +0.0600)



**BEN desc. tri. / sell on downside brkout on larger than normal volume**

Franklin Res Inc (49.0000, 49.0000, 45.7300, 45.8000 -3.2100)



**BLK desc. tri. / sell on downside brkout on larger than normal volume**

Blackrock Inc:NY (99.3800, 102.380, 96.6000, 96.8100 -3.9300)



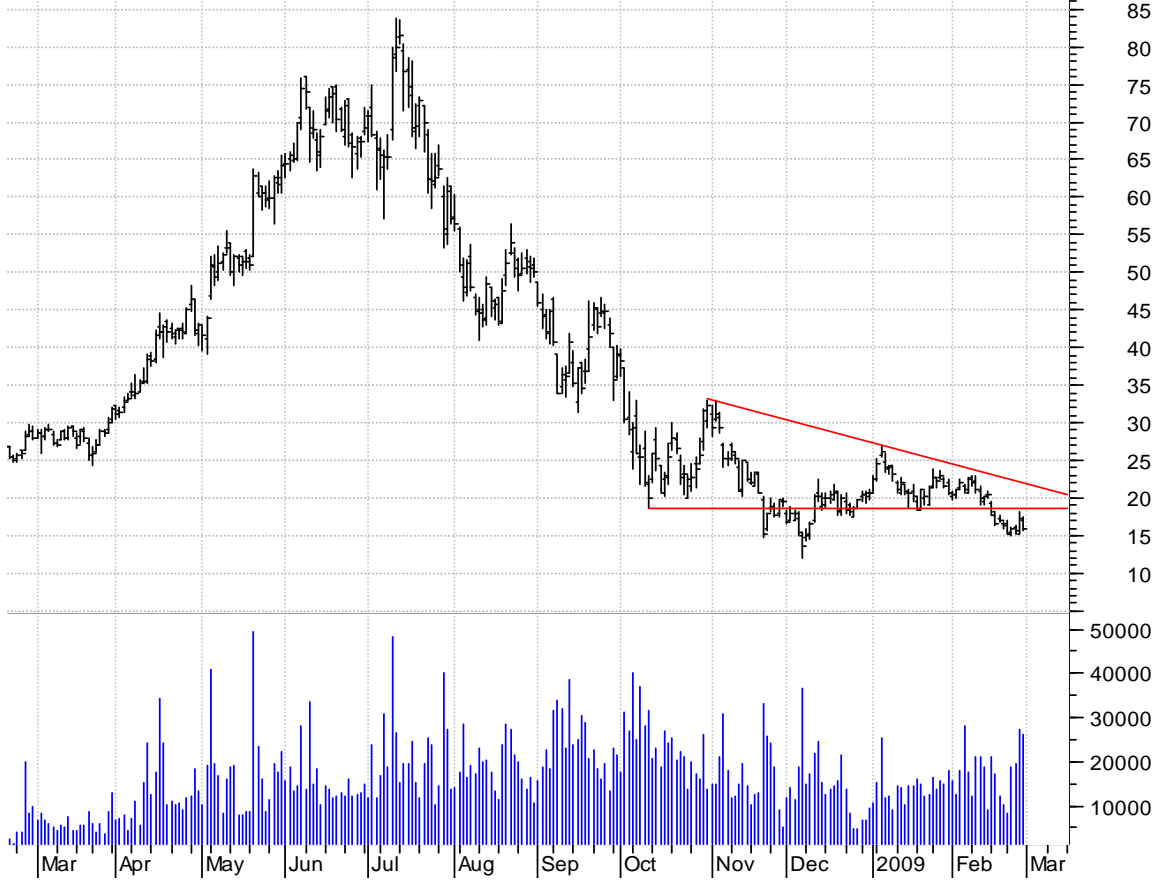
**BMO symm. tri. brkout and retracement / sell on downside continuation on larger than normal volume**

Bank Of Montreal (22.3500, 22.3500, 21.5100, 22.1300 -0.6400)



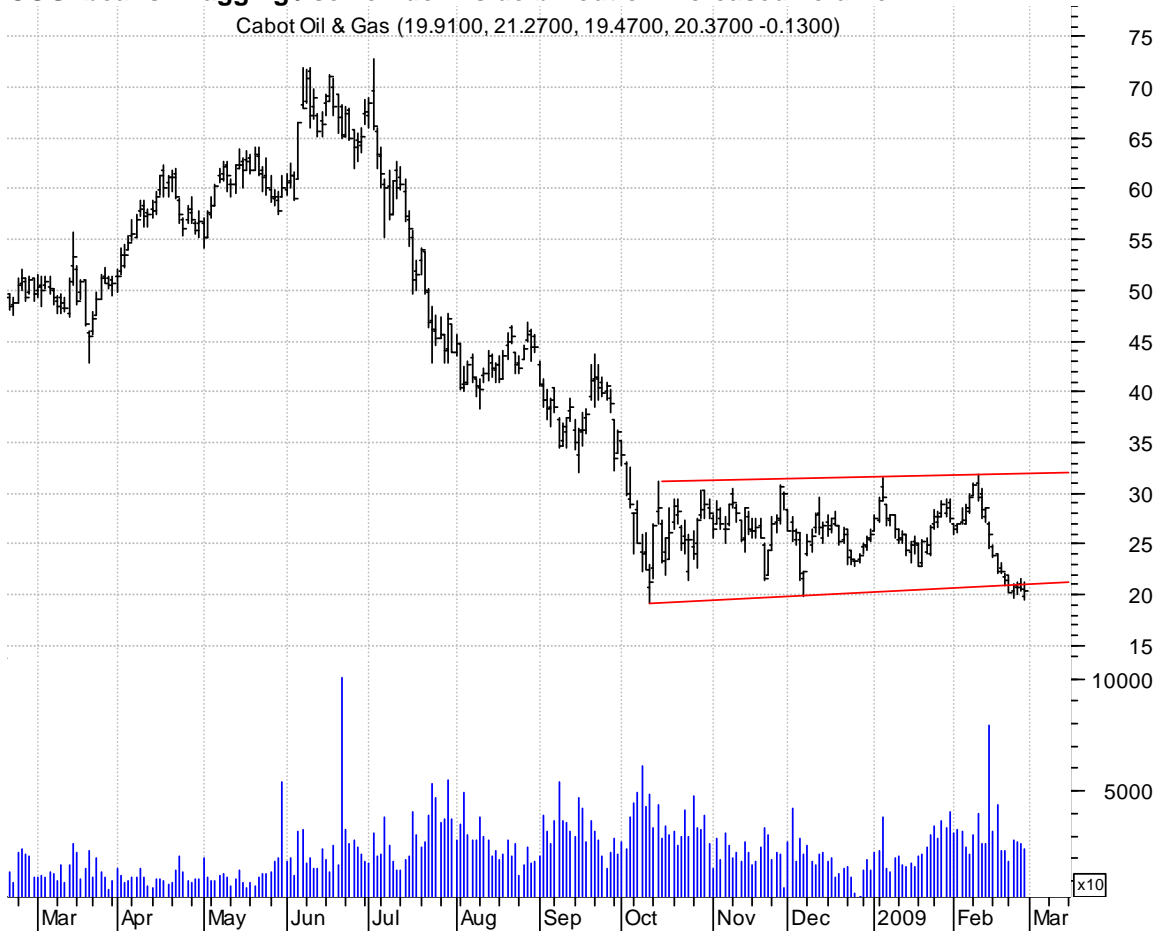
**CLR desc. tri. brkout and retracement / sell on downside brkout on larger than normal volume**

Continental Reso (17.0800, 17.5600, 15.7600, 15.8900 -1.4200)



### COG bearish flagging / sell on downside brkout on increased volume

Cabot Oil & Gas (19.9100, 21.2700, 19.4700, 20.3700 -0.1300)



### CVS desc. tri. / sell on downside brkout on increased volume

CVS Caremark Cor (25.7400, 26.1700, 25.5700, 25.7400 -0.1300)



**DPL desc. tri. / sell on downside brkout on larger than normal volume**

DPL Inc:NYSE (19.6500, 20.6200, 19.6400, 20.1000 +0.3300)



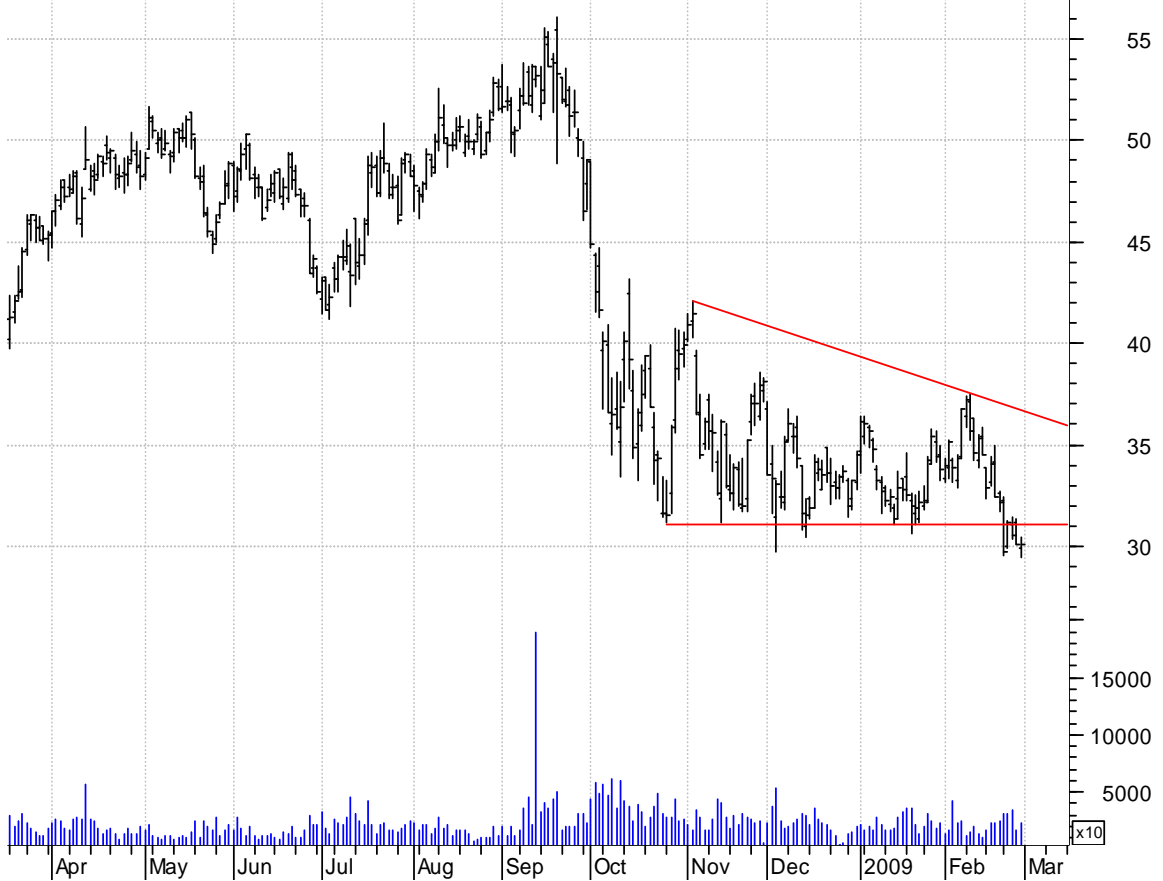
**ESRX symm. tri. preceded by 'pole-like' move / sell on downside brkout on larger than normal volume**

Express Scripts (52.0000, 52.2200, 50.3000, 50.3000 -2.4900)



**FAST desc. tri. brkout / sell on downside continuation on increased volume**

Fastenal Co:OTC (29.9000, 30.4800, 29.4100, 30.1200 +0.0300)



**GDI desc. tri. / sell on downside brkout on increased volume**

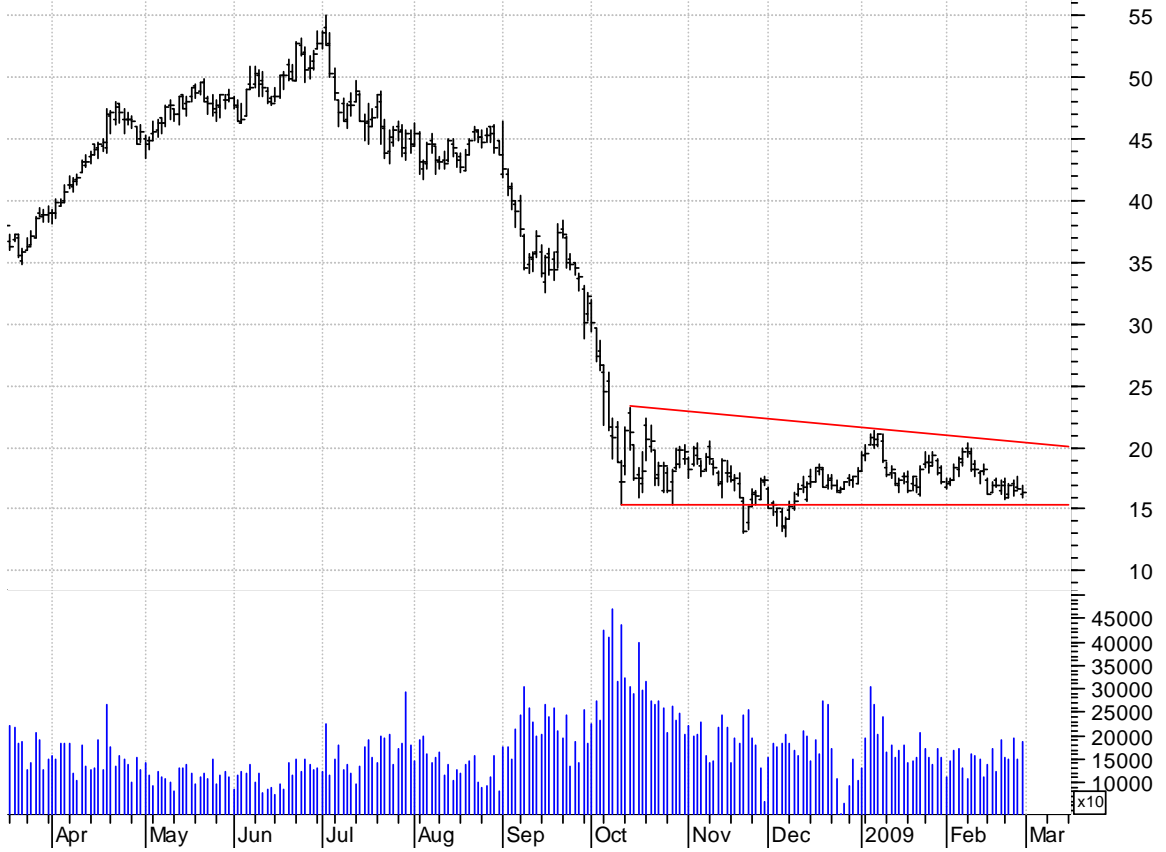
Gardner Denver I (18.2700, 19.4200, 18.2500, 18.9200 +0.1600)





**HAL desc. tri. / sell on downside brkout on increased volume**

Halliburton Co:N (16.2300, 16.9500, 15.9100, 16.3100 -0.3000)



**JOYG desc. tri. / sell on downside brkout on increased volume**

Joy Global Inc:O (16.7900, 18.1500, 16.5600, 17.4600 +0.2200)



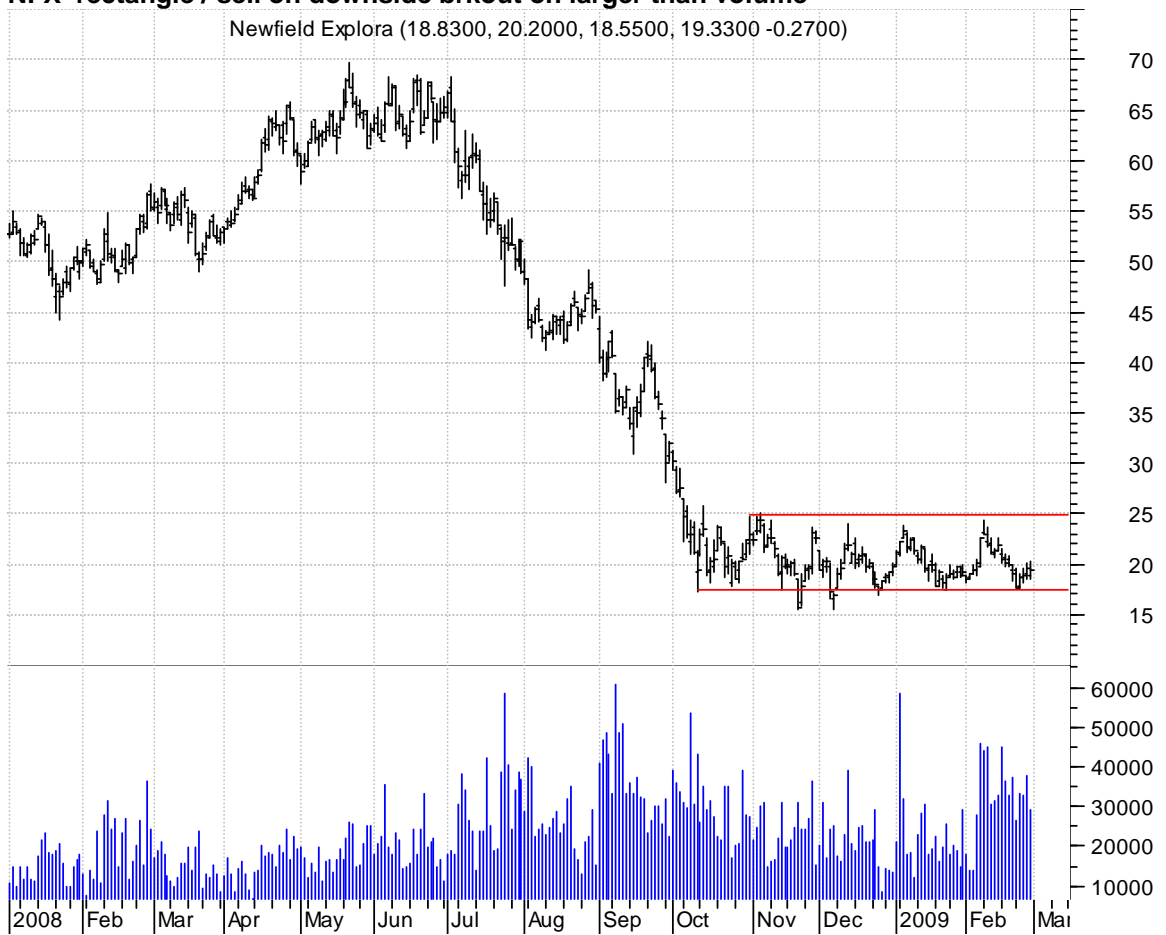
**LAYN desc. tri. / sell on downside brkout on increased volume**

Layne Christense (16.0400, 16.6000, 15.8000, 16.2700 -0.2100)



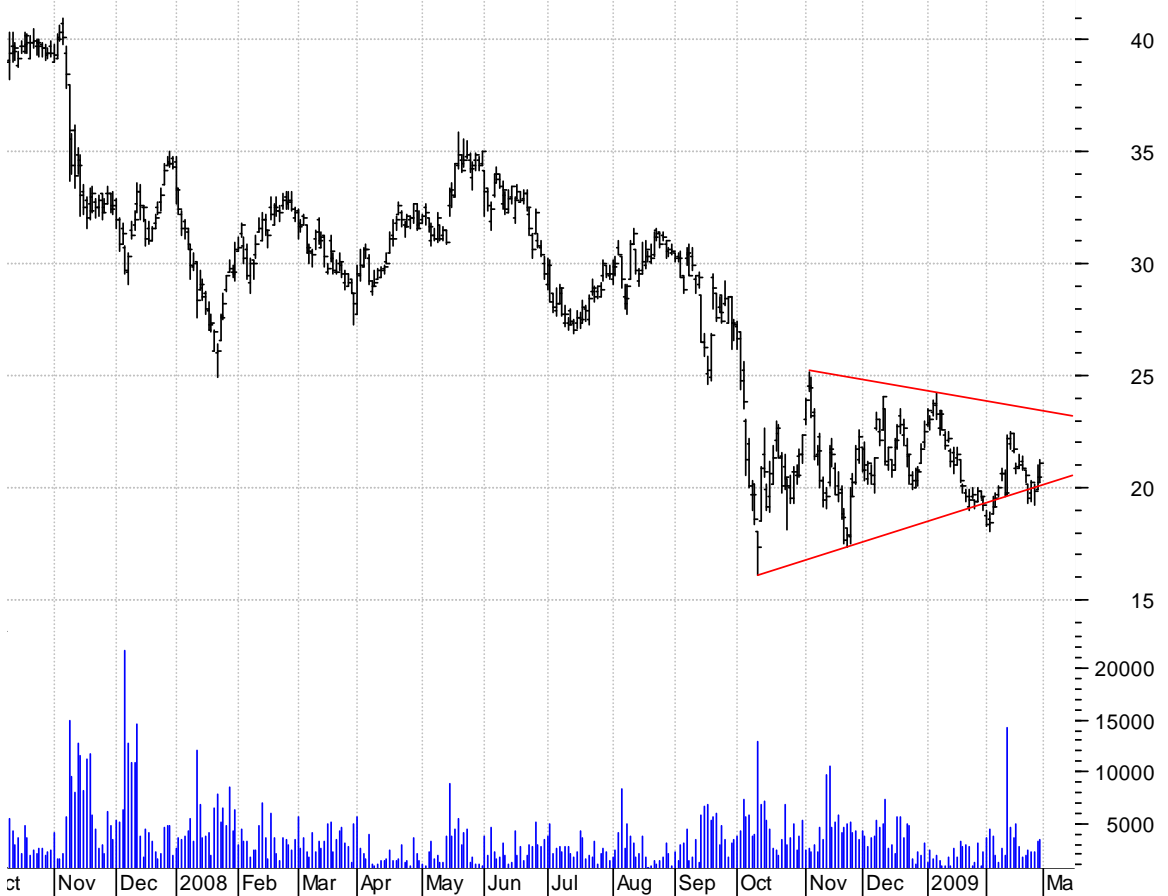
**NFX rectangle / sell on downside brkout on larger than volume**

Newfield Explora (18.8300, 20.2000, 18.5500, 19.3300 -0.2700)



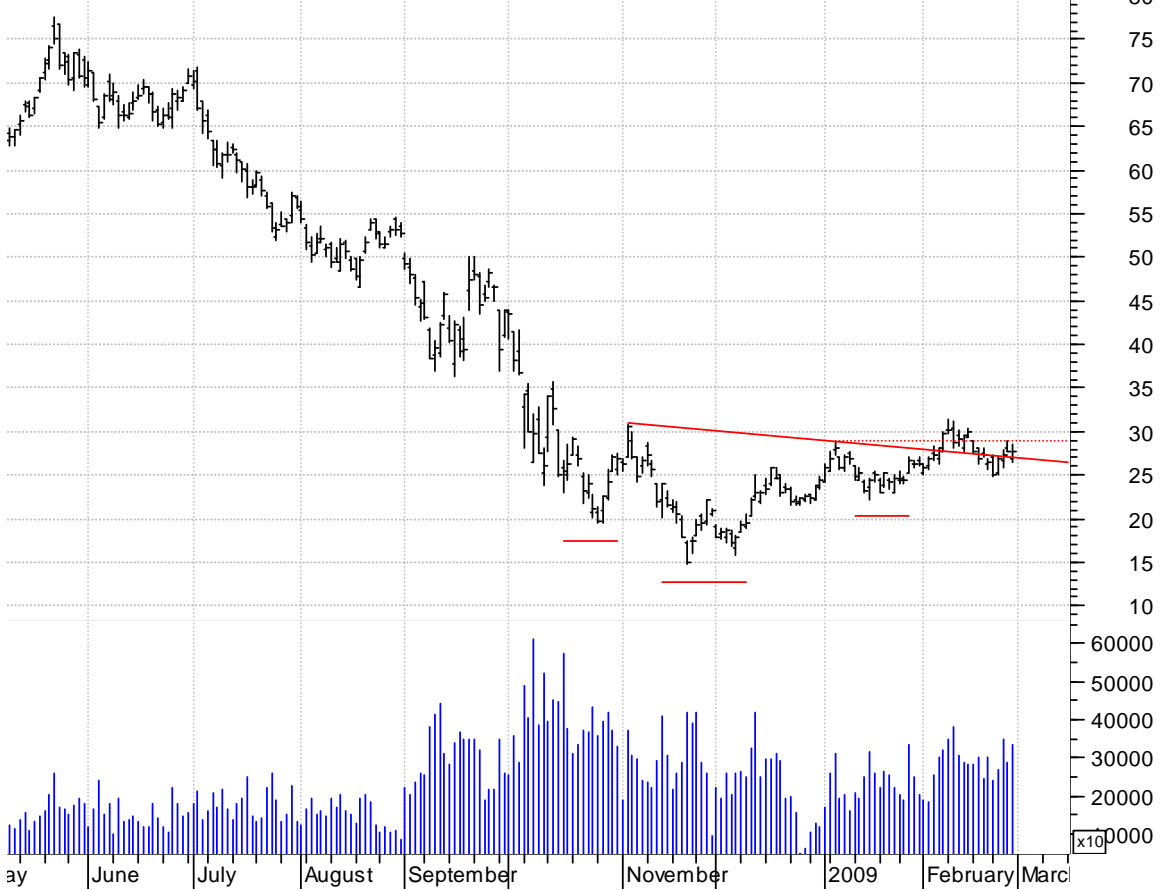
**NICE symm. tri. / sell on downside brkout on increased volume**

Nice-Systems Ltd (20.2700, 21.2800, 20.2700, 21.1000 +0.5900)



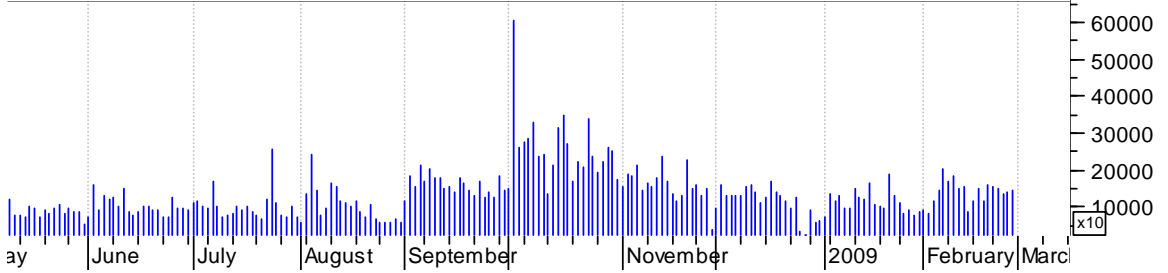
**PBR inv. h. & sh. / buy on upside brkout thru dotted red line on larger than normal volume**

Petroleo Brasil (26.9700, 28.5900, 26.5200, 27.7300 -0.0700)



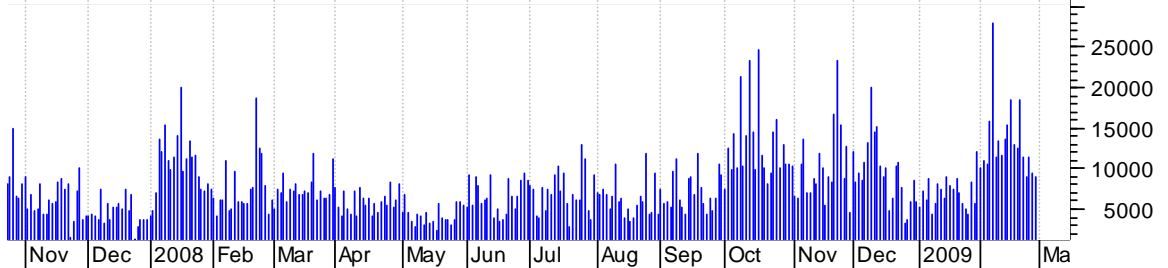
**POT inv. h. & sh. / buy on upside brkout thru dotted red line on increased volume**

Potash Cp:NYSE (81.3800, 87.6500, 80.9500, 83.9700 +0.1300)



**ROP symm. tri. / sell on downside brkout on increased volume**

Roper Industries (41.2100, 42.5800, 40.6200, 41.3500 -0.5000)



**RRC symm. tri. / sell on downside brkout on increased volume**

Range Resources (34.6100, 37.0000, 34.1500, 35.5700 -0.0900)



**STAR symm. tri. brkout (preceded by 'pole-like' move) / buy on upside brkout on lgrg than norm vol**

Starent Networks (15.5000, 15.8400, 15.1000, 15.8100 +0.1700)



### XTO bear flagging / sell on downside breakout on increased volume

XTO Energy Inc:N (30.8000, 32.8900, 30.1400, 31.6600 -0.2900)



**chartpatterns.com**  
Chart Pattern Analysis for Timing the Markets

[KMatras@aol.com](mailto:KMatras@aol.com)